

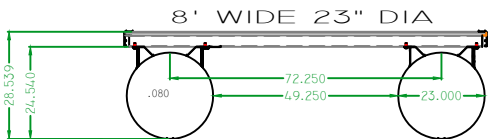
TUBE PACKAGE



AVAILABLE PACKAGE UPGRADE

REMINER.. LENGTHS SHOWN ARE TUBE LENGTH
S - MODEL NAME IS USUALLY NOT TUBE LENGTH

REMINER.. FOR BOATS OVER 150HP A WAVETAMER IS
REQUIRED. KD OR WAVETAMER DELETE VOIDS WARRANTY
RELATING TO WATER DAMAGE



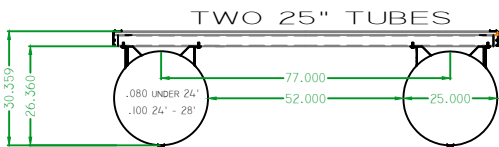
8' WIDE 23" DIA

16' TO 18" TUBES

20" TRANSOM
(60 MAX)

NO CHINE OPTIONS

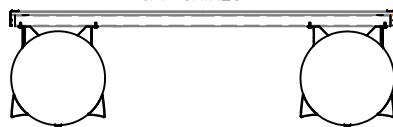
CENTER STORAGE
NOT AVAILABLE



TWO 25" TUBES

20" TRANSOM
(150 MAX)

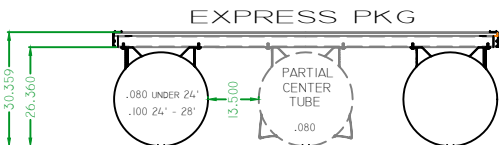
OPT. CHINES



(SPECIFY OPEN OR CLOSED CHINES)

CHINES 19'-22'
EXCEPT: ARCH,
TOWER, CLUB & Q

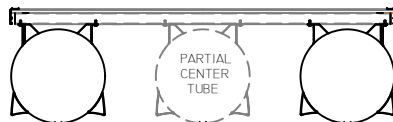
CENTER STORAGE
20" TUBES OR LONGER



EXPRESS PKG

20" TRANSOM
(150 MAX)

OPT. CHINES



(SPECIFY OPEN OR CLOSED CHINES)

20' OR LONGER

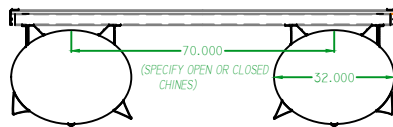
CENTER STORAGE
20" TUBES OR LONGER



TWO ELLIPTICAL

20" TRANSOM
(150 MAX)
20" MEGA PAN
(200 MAX WITH 22'
OR LONGER TUBES)

OPT. CHINES



(TWIN ELLIP. SALTWATER PKG: WAVET., ANODES, CHINES)
(TWIN ELLIP. FRESHWATER PKG: WAVET. OPEN FOILS & STRAKES)

20' OR LONGER

CENTER STORAGE
NOT AVAILABLE

TRANSOM CORES

WOOD CORE FOR RATINGS BELOW 250 HP
URETHANE/FIBERGLASS CORE FOR PACKAGES
RATED 250 HP OR MORE



STRINGERS

STANDARD IN THE ESP ELLIPTICAL TUBE(S).
OPTIONAL IN OUTER TUBES WHEN
THE BOAT CANNOT BE SUPPORTED AT
THE ENDCAPS AND NOSE CONE/TUBE
INTERSECTION. (USUALLY BOAT LIFTS)

KEEL

SOLID, LARGE ROUNDED KEEL
PROTECTS AND STIFFENS BOTTOM OF TUBE
SOLID FOR SALTWATER APPLICATIONS
SOLID FOR STRENGTH
ROUNDED FOR BANKING WITH ESP AND SPS

CUSTOM KEEL WELDS (STOPS BARNACLE INDUCED SEPARATION)
DWG 29393 3.5+ (+/- .5") 1/2" OC ALTERNATING SIDES

REV:C

HYDRODYNAMIC LIFT

LIFTING STRAKE OR "REVERSE CHINE" (OPEN & CLOSED)



PROVIDES HYDRODYNAMIC LIFT TO THE BOAT BY CHANGING
THE RUNNING SURFACE FROM A ROUND CHINE TO A REVERSE,
HARD CHINE SHAPE.
(USUALLY REQUIRES 30MPH TO BE EFFECTIVE)



FOIL OR POINTED CHINE (OPEN & CLOSED)

LIFTS OR DIGS DOWN IN THE WATER DEPENDING ON HOW THE
FOIL IS SLIDING ACROSS THE WATER

BRF	2/19/21
BRF	12/5/19
BRF	7/12/19
BY	DATE
ADD CUSTOM KEEL WELDING	
ADD 8" WIDE 23" DIA TUBES	
ADD TRAILER DIMENSIONS	
DESCRIPTION	

23' AND 25' BAFFLES = .080 THK
23' ENDCAPS = .080 THK
25' ENDCAPS = .100 THK
ELLIPTICAL BAFFLES AND ENDCAPS = .090 THK
ELLIPTICAL BULKHEADS = .125 & .188 THK

NOSE CONE IS SAME AS TUBE THICKNESS SHOWN

BENNINGTON		TITLE 2021		SIZE B
ELKHART IN		2 TUBE & EXPRESS CONFIGURATIONS		
DWN BY: BRF	DATE: 6/19/20	MATERIAL:	SCALE: 3/8" = 1'-0"	
CHK BY:	DATE:	DWG NO. SHEET 1 OF 4		
APPLICATION: 2021 TUBE CONFIGURATIONS.		1220 2021 OPTIONS		

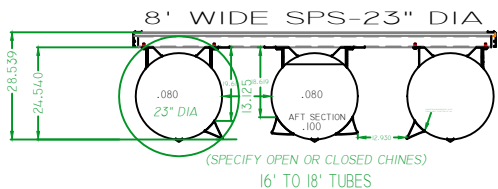
TUBE PACKAGE



AVAILABLE PACKAGE UPGRADE

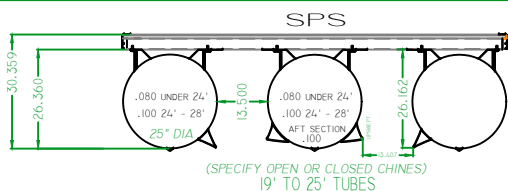
REMINER.. LENGTHS SHOWN ARE TUBE LENGTH
S - MODEL NAME IS USUALLY NOT TUBE LENGTH

REMINER.. FOR BOATS OVER 150HP A WAVETAMER IS
REQUIRED. KD OR WAVETAMER DELETE VOIDS WARRANTY
RELATING TO WATER DAMAGE



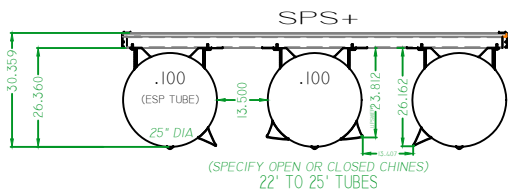
20" TRANSOM*****THIS IS THE ONLY 20" TRANSOM IN 3 TUBE BOATS
115HP MAX

CENTER STORAGE
NOT AVAILABLE



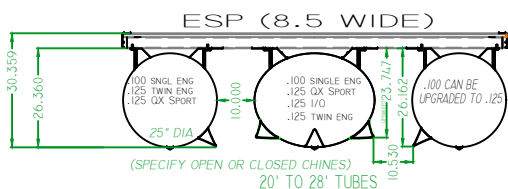
25" TRANSOM
200HP MAX

CENTER STORAGE
19' TUBES OR LONGER



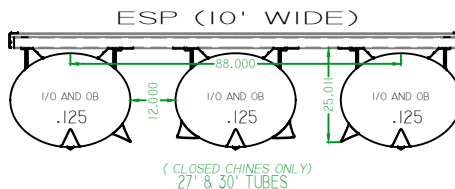
25" TRANSOM
250 HP MAX

CENTER STORAGE
20' TUBES OR LONGER

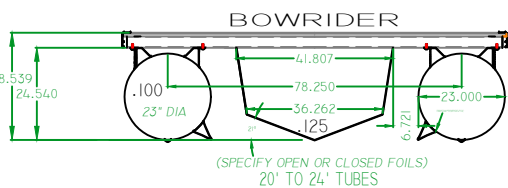


25" TRANSOM
450 HP MAX

20' TUBES OR LONGER (SNGL)
27' TUBES OR LONGER (TWIN)



CENTER STORAGE
22' TUBES OR LONGER



25" TRANSOM
300 HP MAX

CENTER STORAGE
STANDARD ALL MODELS

TRANSOM CORES

WOOD CORE FOR RATINGS BELOW 250 HP
URETHANE/FIBERGLASS CORE FOR PACKAGES
RATED 250 HP OR MORE



STRINGERS

STANDARD IN THE ESP ELLIPTICAL TUBE(S).
OPTIONAL IN OUTER TUBES WHEN
THE BOAT CANNOT BE SUPPORTED AT
THE ENDCAPS AND NOSE CONE/TUBE
INTERSECTION. (USUALLY BOAT LIFTS)

KEEL



SOLID, LARGE ROUNDED KEEL
PROTECTS AND STIFFENS BOTTOM OF TUBE
SOLID FOR SALTWATER APPLICATIONS
SOLID FOR STRENGTH
ROUNDED FOR BANKING WITH ESP AND SPS

CUSTOM KEEL WELDS (STOPS BARNACLE INDUCED SEPARATION)
DWG 29393 3.5+ (+/- .5") 12" OC ALTERNATING SIDES

REV:A



NEW FOR 2020.....
UPSWEPT CHINE (OPEN & CLOSED)
THE EXTRUSION IS TURNED ON ITS SIDE, ELIMINATING THE
REVERSE CHINE FEATURE, WHILE MAINTAINING A HARD CHINE



FOIL OR POINTED CHINE (OPEN & CLOSED)
LIFTS OR DIGS DOWN IN THE WATER DEPENDING ON HOW THE
FOIL IS SLIDING ACROSS THE WATER

23" AND 25" BAFFLES = .080 THK
23" ENDCAPS = .080 THK
25" ENDCAPS = .100 THK
ELLIPTICAL BAFFLES AND ENDCAPS = .090 THK
ELLIPTICAL BULKHEADS = .125 & .188 THK

NOSE CONE IS SAME AS TUBE THICKNESS SHOWN

BENNINGTON

TITLE **2021**
3 TUBE CONFIGURATIONS

SIZE **B**

DWN BY: BRF

ELKHART IN

MATERIAL:

CHK BY: DATE

DATE 6/19/20

SCALE 3/8" = 1'-0"

APPLICATION 2021 TUBE CONFIGURATIONS.

DWG NO. SHEET 3 OF 4

1220 2021 OPTIONS

2/19/21

BRF BY

ADD CUSTOM KEEL WELDING
DESCRIPTION

REV: A