

# PRO XD



## BUILT TO WORK

The Pro XD is built to withstand the toughest worksites without compromising safety or uptime. Engineered from the inside-out for jobsite compliance and backed by Polaris® innovations—Pro XD commercial utility vehicles provide industry-leading safety, durability, and serviceability.

BUILD YOUR PRO XD AT [POLARIS.COM/PRO-XD](https://www.polaris.com/pro-xd)

**POLARIS** COMMERCIAL

*Vehicles shown with options and accessories that may not be part of stock packages.*

# THE WORK UTV STANDARD

The Polaris® Pro XD sets the bar high when it comes to safety and durability for commercial UTVs. Built from the ground up with the toughest driveline components and tires in the industry—Pro XDs will be running long after the competition is stuck in the shop—providing you with a high ROI and low TCO.



## PRO XD FULL-SIZE

Polaris Commercial's original work UTV workhorse seats 2-4 passengers and is powered by the Polaris ProStar 1000cc gas or Kubota® 24-horsepower diesel engine.



## PRO XD MID-SIZE

Designed for tighter spaces, remarkable comfort, and lighter payloads, the Pro XD Mid-Size seats 2-4 passengers and is powered by a Polaris ProStar 570 DOHC gas engine.



## SAFETY

Safety is number one for our customers and their crews. The Pro XD is engineered from the inside out to meet and exceed jobsite compliance.

## DURABILITY

Pro XDs are built to withstand the toughest commercial jobsites. With Kevlar®-backed seats, 8-ply tires, and heavy-duty driveline components, your Pro XD will be in it for the long haul.

## SERVICEABILITY

Downtime kills productivity. That's why Pro XDs are designed to withstand tough duty cycles and worksite usage. Up to 200-hour maintenance intervals means less in-field maintenance and reduced service costs.

## SAFETY

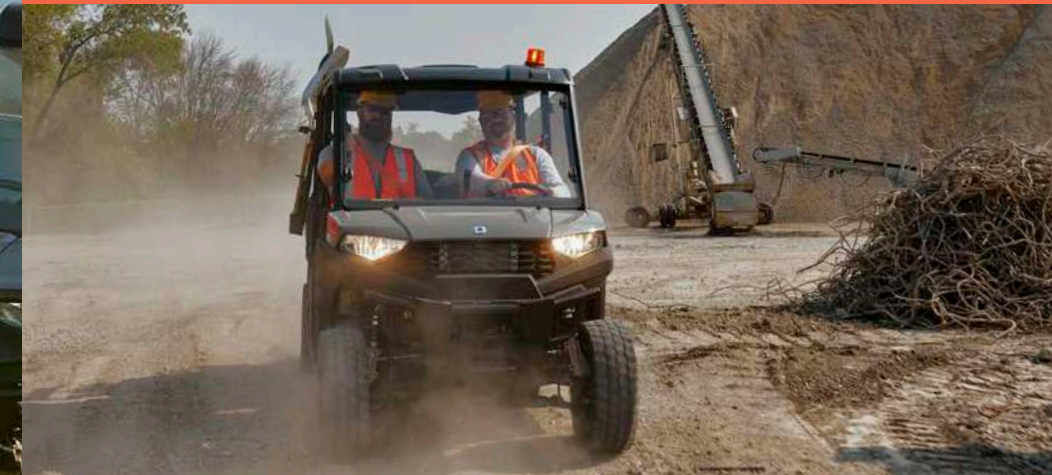


### HIGH VISIBILITY

Orange seatbelts, decals, and lights improve vehicle visibility to surrounding workers.

### STANDARD FACTORY-INSTALLED ACCESSORIES

Pro XD models come standard with a horn and backup alarm. Diesel models come standard with a mechanical parking brake.



### SPEED LIMITED

The Pro XD is delivered with a top speed of 26 mph for jobsite compliance, and can be limited to 15 mph. Gas models can be adjusted to a max speed of 40 mph.

### TIGHT-SEALING CAB

The Pro XD and cab were engineered together to create the tightest seal possible, keeping harmful dust and weather out.

# DURABILITY



# SERVICEABILITY

## INDUSTRY-RECOMMENDED POWER PLANTS

Kubota® 24-horsepower Diesel, Polaris® ProStar 1000CC engine, or Polaris ProStar 570 DOHC gas engine options.

## TOWING AND PAYLOAD

Industry-leading towing and payload with up to 1,250 lbs. payload capacity and 1,500 lbs. towing capacity.

## DRIVELINE COMPONENTS

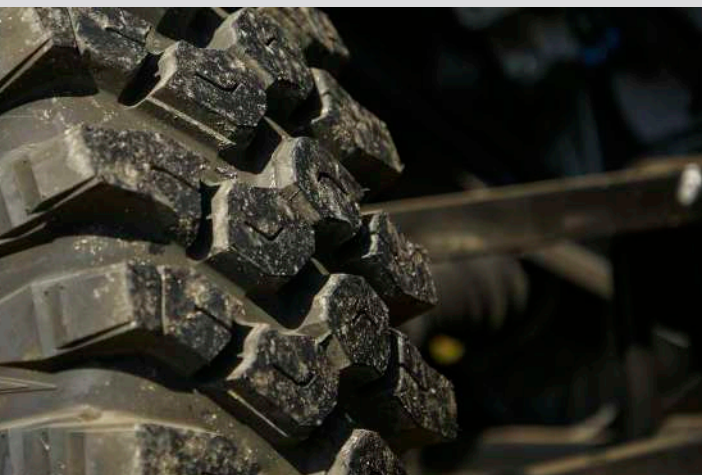
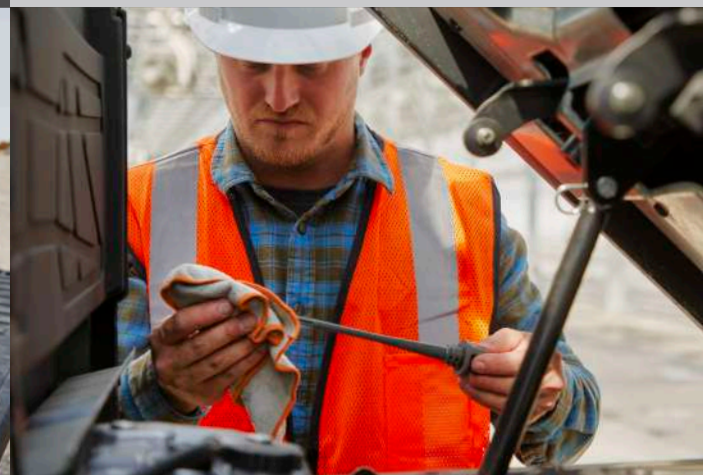
Heavy-duty drive shaft, CVT boots and wheel bearings increase life expectancy.

## WARNING ALARMS

Low oil pressure, parking brake engagement, belt slip, and engine overheat alarms notify users of potential issues that could cause serious vehicle damage.

## RELOCATED OIL DIPSTICK, AIR FILTER & FRONT AIR INTAKE

Easy maintenance checks without raising the cargo bed, and front air intake prevents engine dust ingestion - promoting longer engine & air filter life. (Pro XD Full-Size only.)



## HEAVY-DUTY SEATS

Kevlar®-backed seats help resist punctures and tears.

## JOBSITE TIRES

8-ply jobsite tires designed for longer life on hard-packed surfaces.

## HEAVY-DUTY POLY BED

Rust-free, dent-free bed with 1,250 or 500 lb. box capacity sized to fit a full-size pallet.

## MAINTENANCE INTERVALS

The Pro XD provides up to 200 hours certified maintenance intervals for less in-field maintenance and reduced service costs.

## COMMON-SIZED, NON-DIRECTIONAL TIRES

Unlike other UTVs, all 4 Pro XD tires are common-sized and non-directional—simplifying installation and reducing tire inventory.

## PARKS & RECREATION

---

Move equipment, landscaping materials, and work crews safely and easily across your park, jobsite, or campsite. Pro XDs are built to handle the toughest jobs in any season—maximizing productivity and operational efficiency.

- Parks & Rec
- Colleges & universities
- Govt & Municipalities



## GOVERNMENTS & MUNICIPALITIES

---

No matter the size of the area you serve, there will always be a need for moving goods. Whether it's putting up decorations, spreading salt, or preparing for an event, you need vehicles that help your staff stay on schedule. Choose vehicles with hauling and customization capabilities that are right for you.

## COLLEGES & UNIVERSITIES

---

Cultivating a renowned campus takes dedication. Fast-track your grounds maintenance and campus events work with the Pro XD—so your institution can remain focused on its greater goals.



## CONSTRUCTION & INDUSTRIAL

---

Demanding jobsites require vehicles you can rely on to get the job done right. With heavy duty drivelines, hard-packed tires, and extra safety features, Pro XDs are built to help you move people and supplies across your jobsite safely and efficiently.

# CUSTOMIZE YOUR PRO XD

Customize your Pro XD with accessories designed to increase productivity, durability, safety, and comfort. Contact your local dealer for additional details.



## UTILITY

We have your utility needs covered with winches, tool boxes, fire and rescue skids, plows, and more.



## SAFETY

Boost your fleet's safety and visibility with roof strobe lights, rear-view mirrors, work lights, and fire extinguisher holders.



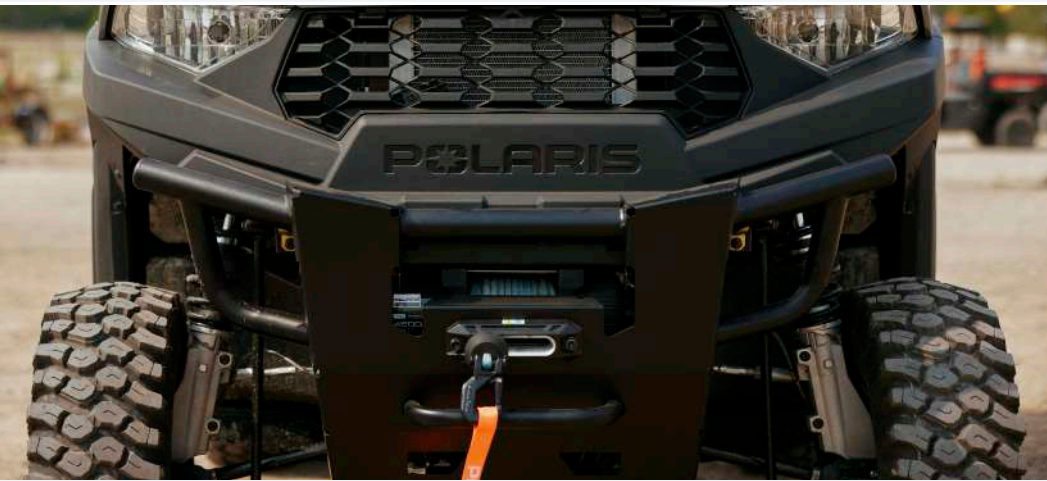
## WINDSHIELDS

A variety of windshield materials and sizes are available for additional safety and protection—better protecting operators from dust and debris.



## REAR PANELS

Tempered glass, with or without slider windows, and poly options are available to suit your needs.



## GUARDS & FILTERS

Protect your fleet from wear and tear with premium bumpers, rock guards, mud guards, A-arm guards, and air filter gauges.



## COMFORT & CONVENIENCE

Enhance the comfort of your cab with a heat and defrost kit or audio system.



## DOORS

Sealed and protected or open and airy—we have you covered with a variety of door options.









## POLY ROOF

Add protection from weather and jobsite hazards with a durable injection molded rigid plastic roof.



## PRO XD TWO-PASSENGER VEHICLES

## PRO XD FOUR-PASSENGER VEHICLES

	Pro XD Mid-Size Gas	Pro XD Full-Size Gas	Pro XD Full-Size Diesel	Pro XD Mid-Size Gas Crew	Pro XD Full-Size Gas Crew	Pro XD Full-Size Diesel Crew
Horsepower	39.5		24.5	39.5		24.5
Bed Box Dimensions (in.)	33.3" x 48.7" x 12.3"	43.5" x 54" x 11.5"	43.5" x 54" x 11.5"	33.3" x 48.7" x 12.3"	43.5" x 54" x 11.5"	43.5" x 54" x 11.5"
Box Capacity (lbs.)	500	1,250		500	1,250	
Ground Clearance (in.)	10	11		10	11	
Payload Capacity (lbs.)	946	1,900		1,141	2,075	
Tow Capacity (lbs.)	1,500	2,500		1,500	2,500	
Top Speed (mph)	15 - 26 - 40		15 - 26	15 - 26 - 40		15 - 26
Seating Capacity	2			4		
Drive System	Selectable 4x4	Selectable 4x4	Selectable 4x4	Selectable 4x4	Selectable 4x4	Selectable 4x4
Maintenance Intervals initial/continuous (hours)	50/200	50/200	50/200	50/200	50/200	50/200
Full Specs						

Kubota® is a registered trademark of KUBOTA CORPORATION. Kevlar® is a registered trademark of DUPONT SAFETY & CONSTRUCTION, INC. Unless noted, all trademarks are the property of Polaris Industries Inc. © 2023 Polaris Industries Inc.

Warning: Polaris Pro XD vehicles can be hazardous to operate and are not intended for on-road use. All riders should always wear head protection - such as a hard hat or a helmet - that is appropriate for operating conditions and intended usage, considering factors such as intended speed, unevenness of terrain, turns in path, weather, obstacles, and other traffic. DOT-approved helmet required for all riders when operating over 30mph. Always use seat belts and close doors (as equipped). Never engage in stunt driving, and avoid excessive speeds and sharp turns. Riding and alcohol/drugs don't mix. All riders should take a safety training course. Call 800-342-3764 for additional information.

