

DOOR KIT

POLARIS

ENGINEERED PARTS
ACCESSORIES & APPAREL

P/N 2882528

APPLICATION

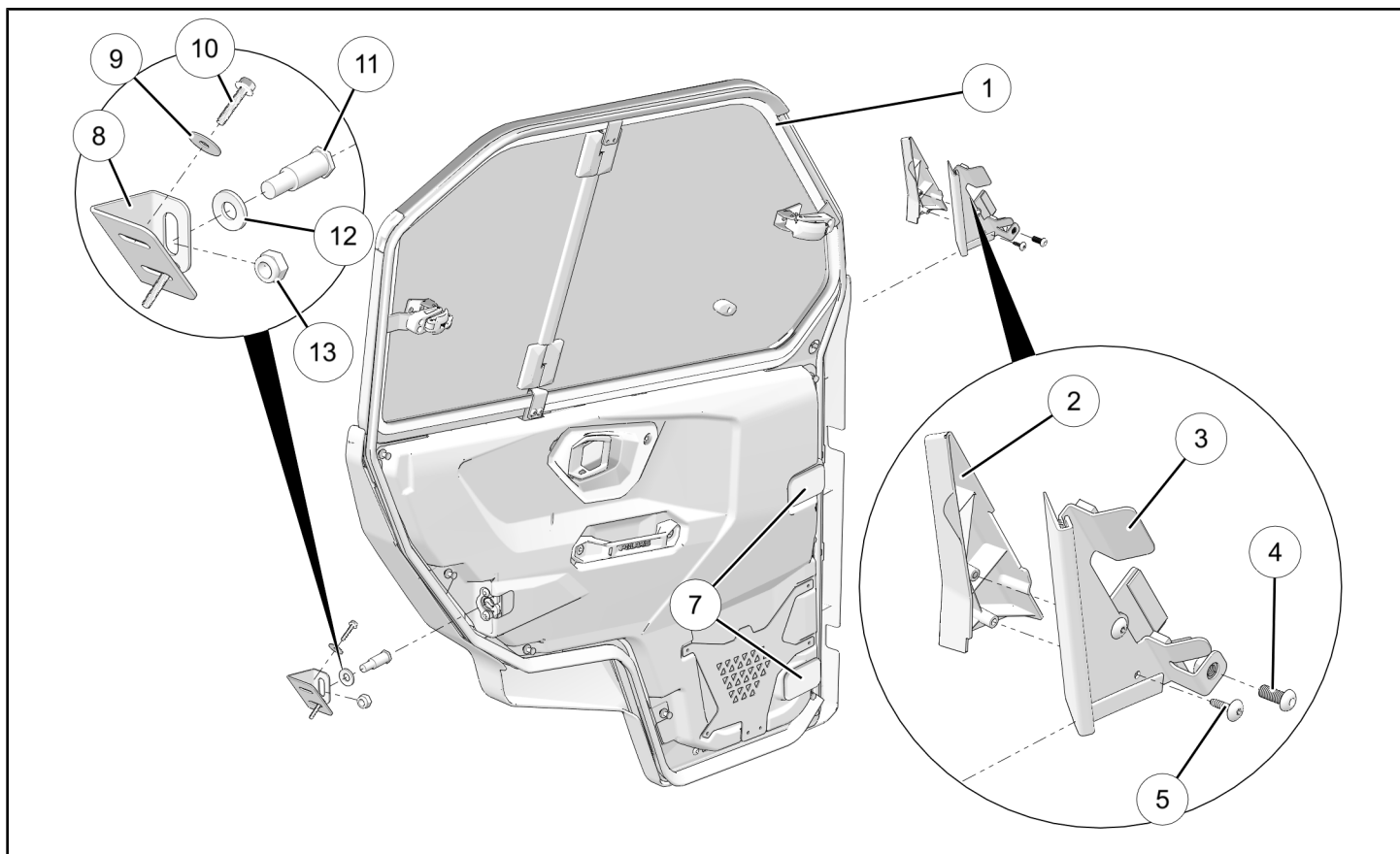
Verify accessory fitment at Polaris.com.

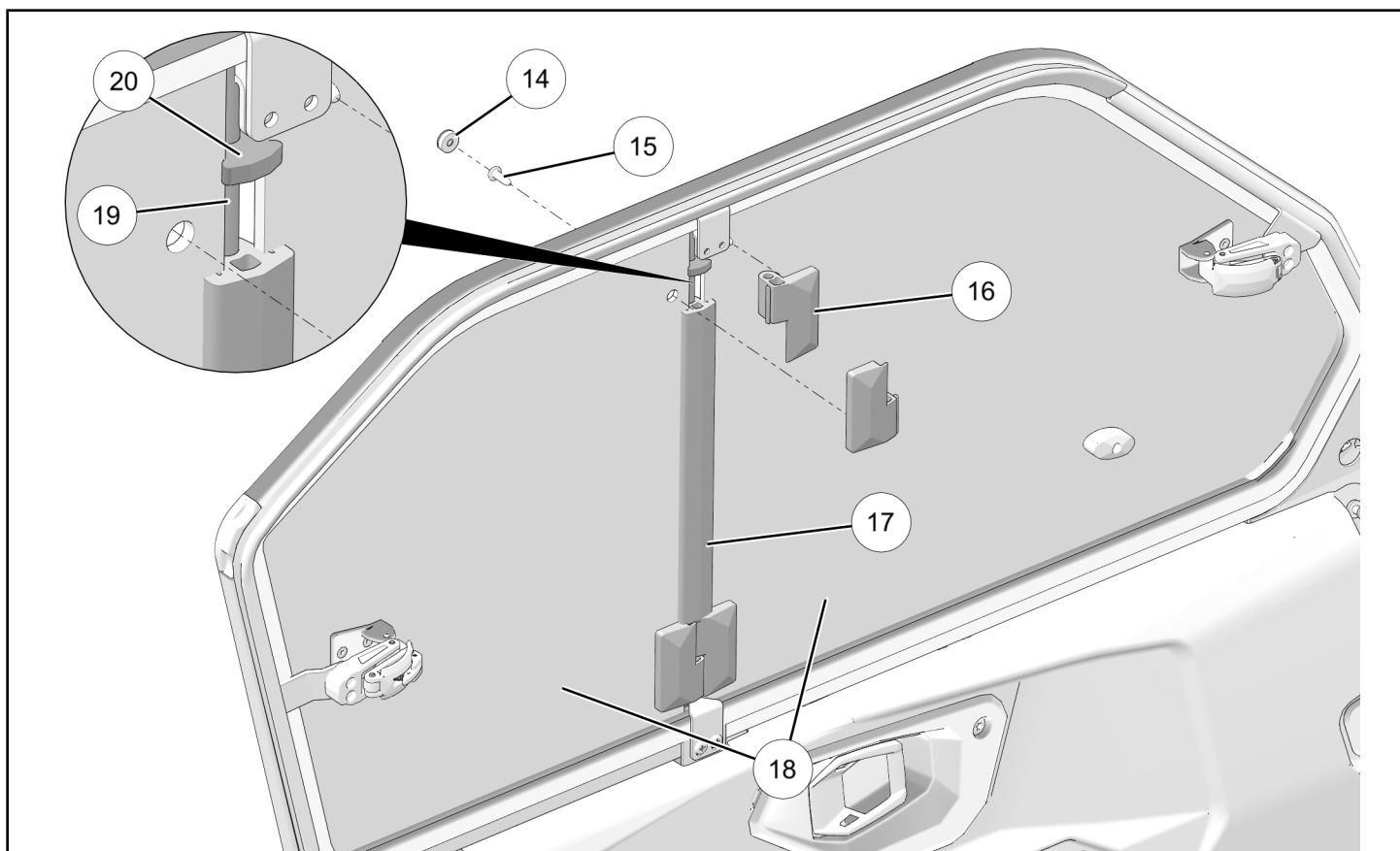
BEFORE YOU BEGIN

Read these instructions and check to be sure all parts and tools are accounted for. Please retain these installation instructions for future reference and parts ordering information.

KIT CONTENTS

This Kit includes:





REF	QTY	PART DESCRIPTION	PART NUMBER	INCLUDED IN HARDWARE KIT
1	1 1	Door Assembly, LH Door Assembly, RH (not shown)	2636562 2636563	- -
2	1 1	Trim, A-Pillar, LH, Outboard Trim, A-Pillar, RH, Outboard (not shown)	- -	2207064 2207064
3	1 1	Trim, A-Pillar, LH, Inboard Trim, A-Pillar, RH, Inboard (not shown)	- -	2207064 2207064
4	2	Screw, Button Head Hex - M8 X 1.25 X 20	-	2207064
5	4	Screw, Torx® - 10-12 X 3/4	-	2207064
6	4	Bushing, Hinge (not shown)	-	2207064
7	4	Cover, Hinge Access	-	2207064
8	1 1	Bracket, Striker, LH Bracket, Striker, RH (not shown)	- -	2207064 2207064
9	4	Washer - M6.5 X 25 X 1.5	-	2207064
10	4	Screw, Hex Flange - M6 X 1.0 X 30	-	2207064
11	2	Pin, Striker	-	2207064
12	2	Washer, Conical Spring - M12	-	2207064
13	2	Nut, Hex, Locking - M12 X 1.75	-	2207064
14	4	Cap	-	2207063

REF	QTY	PART DESCRIPTION	PART NUMBER	INCLUDED IN HARDWARE KIT
15	4	Screw, Torx® Truss Head, High/Low - #14 X 3/4	-	2207063
16	4	Hinge	-	2207063
17	1	Seal, Center	-	2207063
18	1 1	Glass, Front and Rear, LH Glass, Front and Rear, RH (not shown)	- -	2207065 2207066
19	1	Pin, Hinge	-	2207063
20	2	Seal, Hinge	-	2207063
	1	Instructions	9927796	-

TOOLS REQUIRED

- Safety Glasses
- E-Clip Tool*
- Hex Key Set, Metric
- Pry Tool
- Screwdriver Set, Torx®
- Socket Set, Metric
- Torque Wrench
- Wrench Set, Metric

* Tool requirement dependent on specific installation.

IMPORTANT

Your Door Kit is exclusively designed for your vehicle. Please read the installation instructions thoroughly before beginning. Installation is easier if the vehicle is clean and free of debris. For your safety, and to ensure a satisfactory installation, perform all installation steps correctly in the sequence shown.

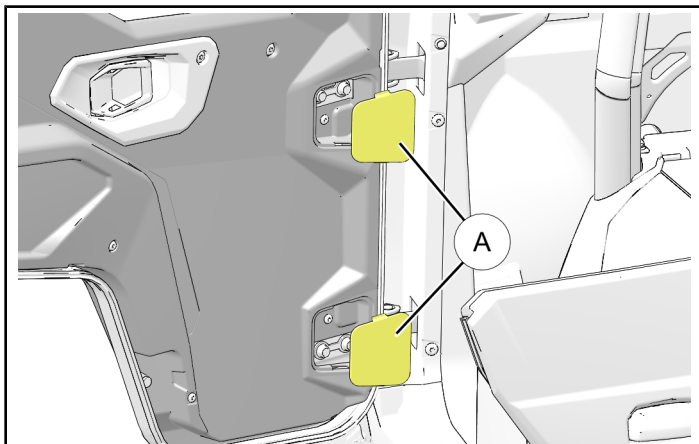
ASSEMBLY TIME

Approximately 50–60 minutes

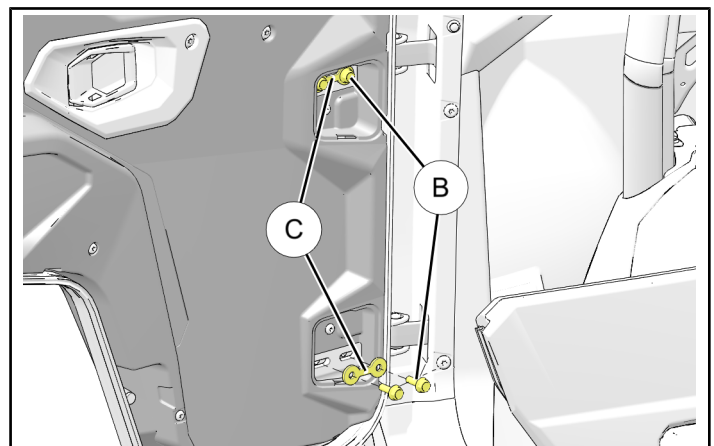
INSTALLATION INSTRUCTIONS

REMOVE EXISTING DOORS

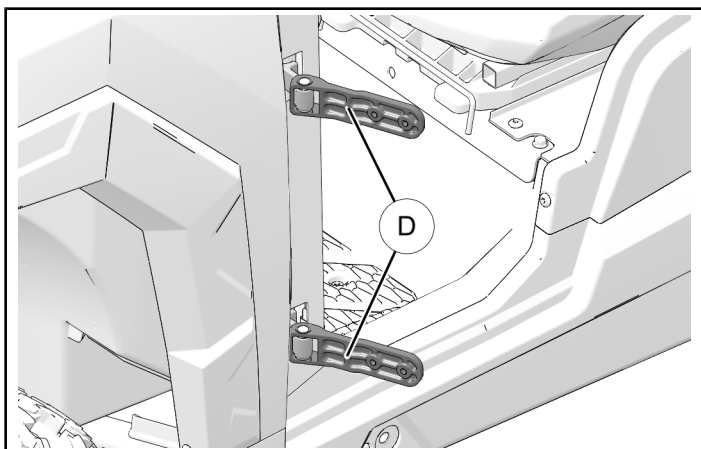
1. Shift vehicle transmission into “PARK”. Turn key to “OFF” position and remove from vehicle.
2. With LH door open, remove two hinge access covers (A) by carefully detaching upper and lower locking tabs from door panel. Covers will not be reused with new door.



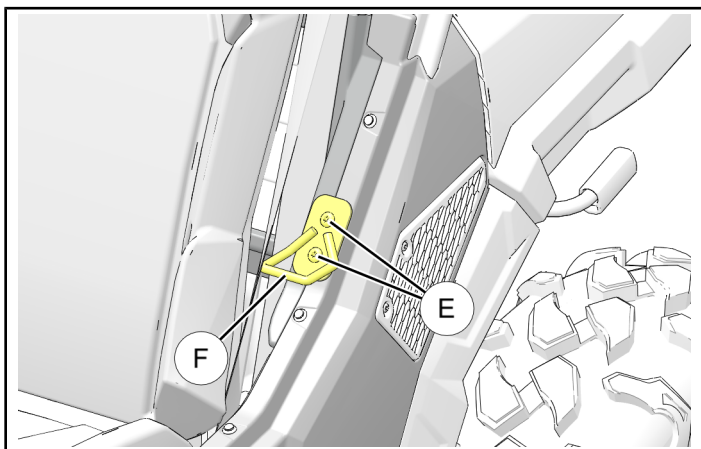
3. Remove two screws (B) and double washer (C) from each door-side hinge. Retain screws and washers.



4. Slide door assembly off door-side hinges ④.



5. Remove two screws ⑤, then remove striker plate ⑥. Screws and striker plate will not be reused with new door.



6. Repeat Steps 2–5 for RH door.

NOTE

Retain hinge access covers ①, screws ⑤, and striker plate ⑥ for seasonal reinstallation of existing door.

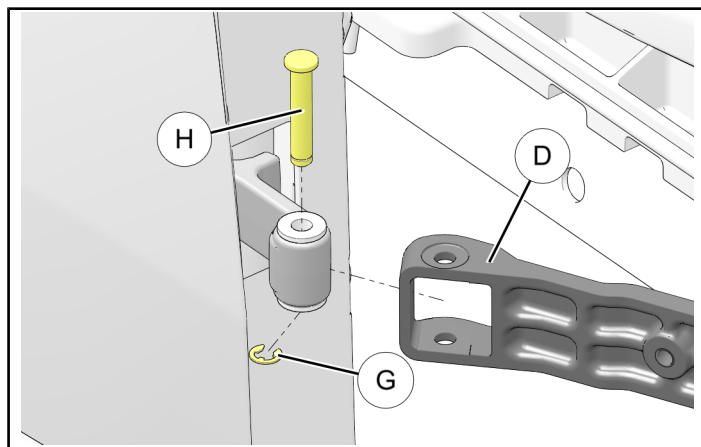
Door-side hinge screws ② and double washer ③ will be reused to install new door ①.

REPLACE HINGE BUSHINGS

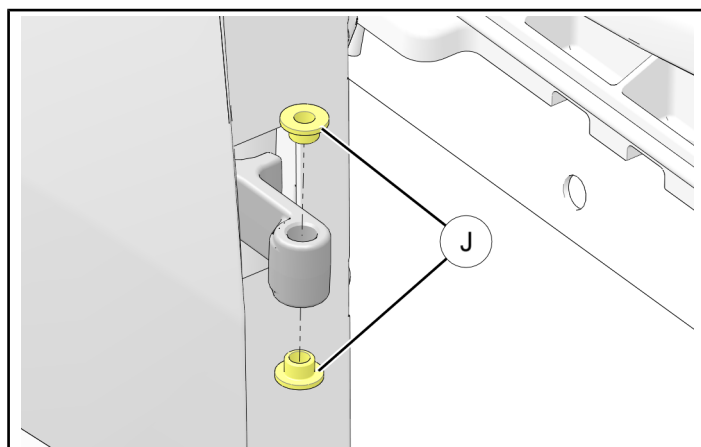
1. Remove clip ⑥, hinge pin ⑧, and door-side hinge ④. Repeat for remaining hinges (LH and RH doors). Retain clips, pins, and hinges.

NOTE

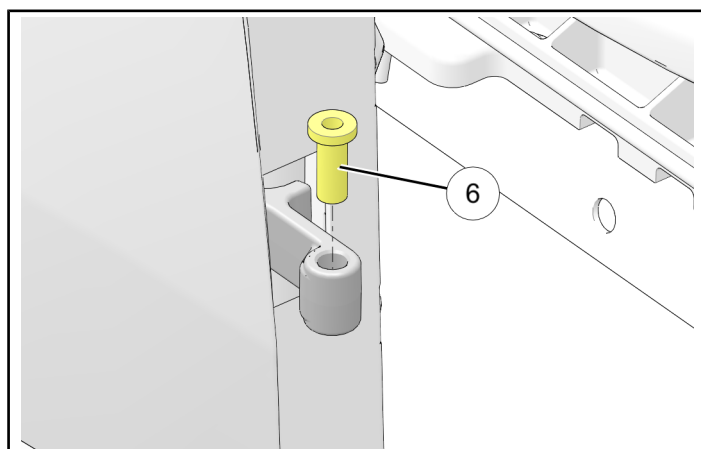
LH and RH door-side hinges are interchangeable. Some vehicles use hinge bolt and lock nut instead of hinge pin and clip. Retain bolts and nuts.



2. Remove upper and lower hinge pin bushings ⑩ from all vehicle-side hinges. Bushings will not be reused.

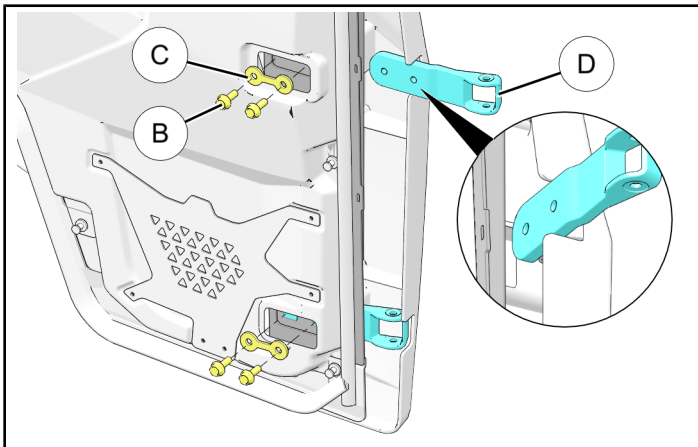


3. Insert new bushing ⑥ TOP-DOWN into all vehicle-side hinges.



INSTALL NEW DOORS

1. Loosely install retained door-side hinge **D** to new LH door **1** using two screws **B** and double washer **C**. Repeat for remaining hinge.



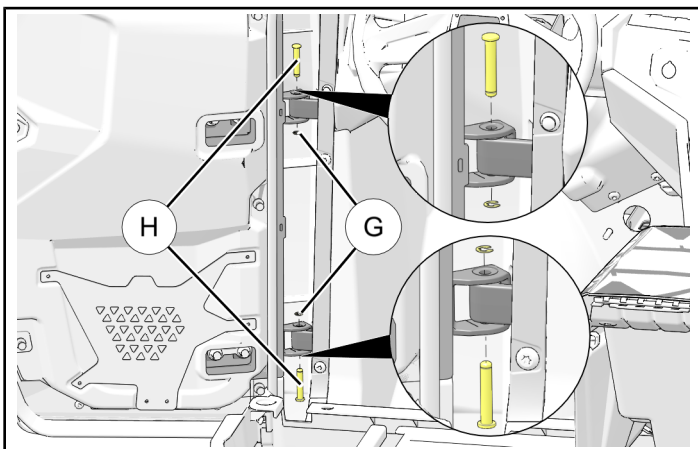
2. Position new door **1** so door-side hinge pin holes align with vehicle-side hinge pin holes.

Install retained UPPER hinge pin (or bolt) **H** from TOP-DOWN, then install LOWER hinge pin (or bolt) **H** from BOTTOM-UP (to clear door web).

- If pins are used, secure each with retained clip **G**.
- If bolts are used, secure each with retained lock nut, then torque to specification.

TORQUE

8 ft. lbs. (11 Nm)



3. Holding door closed, observe gap between door and vehicle ROPS/frame. Adjust as required so door is centered, then torque hinge screws **B** to specification.

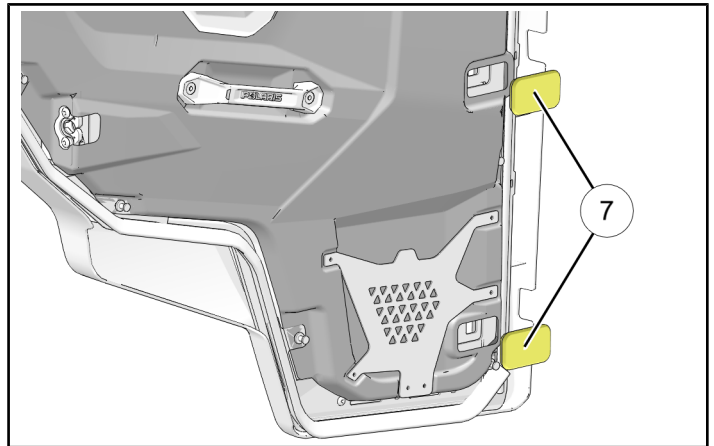
TORQUE

27 ft. lbs. (37 Nm)

NOTE

Seal compression will be adjusted in Step 5c.

4. Install two hinge access covers **7** to new door **1**.

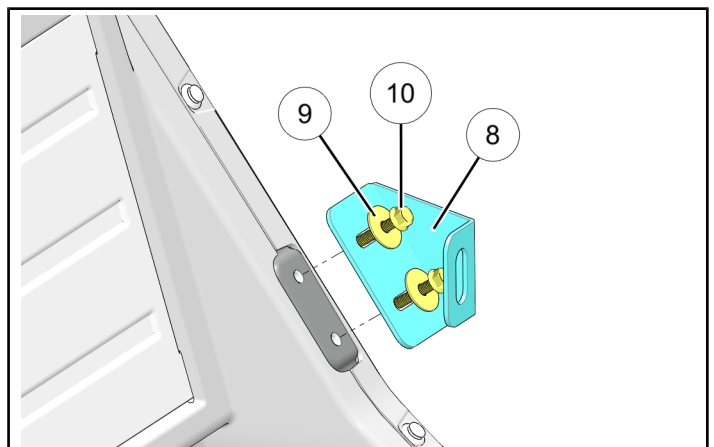


5. Install striker bracket and pin.

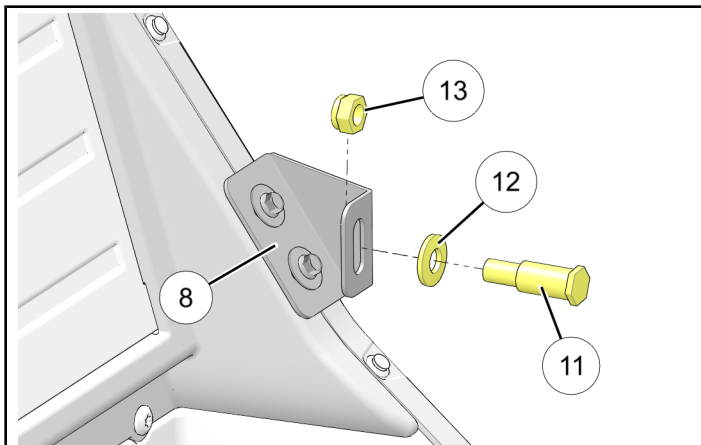
- a. Install striker bracket **8** to vehicle using two each screws **10** and washers **9**. Position bracket in middle of adjustment slots. Do not fully tighten screws at this time.

TIP

Slide striker bracket outboard in slots to provide room for socket. Install screws until almost seated, then slide bracket to middle of slots and continue tightening with wrench.



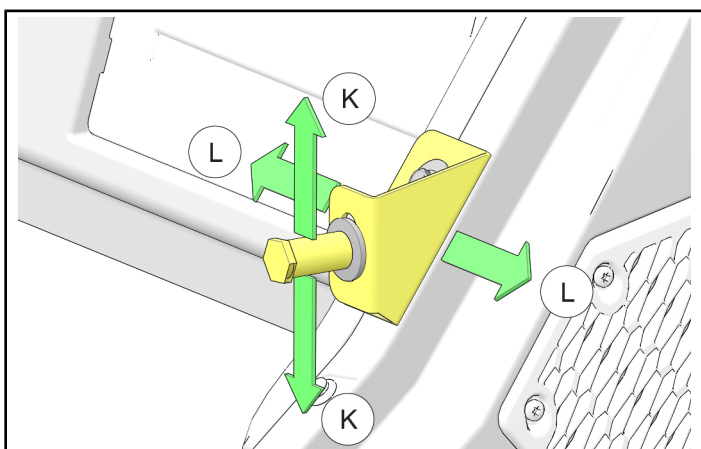
- b. Install striker pin ⑪ and conical spring washer ⑫ to striker bracket ⑧ using nut ⑬. Ensure cupped-side of washer is towards striker bracket. Position striker in middle of adjustment slot. Do not fully tighten nut at this time.



- c. Open door latch (to properly position pawl), then slowly close door and observe engagement of striker pin ⑪ into door latch.

Adjust striker pin to achieve the following:

- HEIGHT (K): Pin shank should be centered between upper and lower latch pawls. To adjust, loosen nut ⑬, move striker pin ⑪ up or down as required, then re-tighten nut.
- DEPTH (L): As required to achieve desired seal compression. To adjust, loosen screws ⑩, move striker bracket ⑧ inboard or outboard as required, then re-tighten screws.



- d. Torque fasteners to specification.

TORQUE

Screws ⑩: 7 ft. lbs. (9 Nm)
Nut ⑬: 30 ft. lbs. (41 Nm)

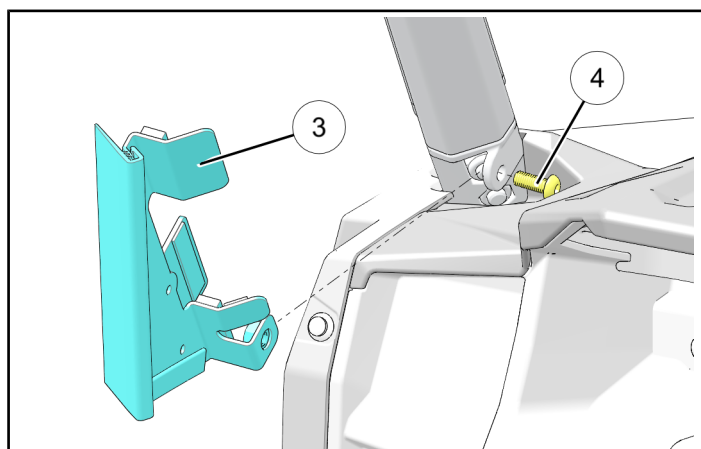
6. Install A-pillar trim.

- a. Install inboard trim ③ to A-pillar attach ear using screw ④.

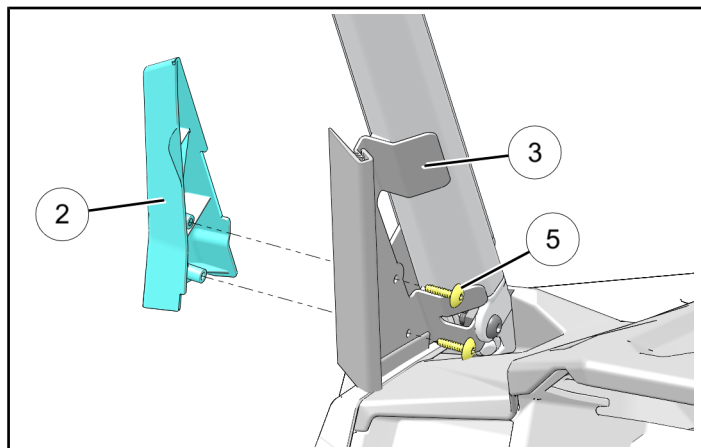
NOTE

If Poly Flip Down Windshield Kit (PN 2882174) or Tip-Out Glass Windshield (PN 2881108) is installed, then remove M8 nut on outboard side of ear (nut provided in windshield kit).

Secure windshield component (bracket or ball fitting, as applicable) to ear using weld nut attached to inboard trim ③.



- b. Install outboard trim ② to inboard trim ③ using two screws ⑤. Do NOT overtighten screws.



7. Repeat Steps 1–6 for RH door.