



*Indian*<sup>®</sup>  
MOTORCYCLE

---

SPRING/SUMMER 2020

**APPAREL  
& GIFTS**

DEALER CATALOG

---



# SPRING/SUMMER 2020 APPAREL & GIFT COLLECTION



GETAWAY JACKET  
PAGE 7

## HERITAGE

**Heritage Collection** – A classic designed range inspired by Indian Motorcycle's rich heritage. Timeless design is combined with bold branding details, for the customer that wants to proudly identify themselves as an Indian Motorcycle® owner.

## SEASONAL UPDATES

### SUPPORTING GROWTH

As the Indian Motorcycle® brand has grown, we have looked to innovate by delivering class leading products to market, from models like the Chief® Vintage to Scout® Bobber, Chieftain Dark Horse® and all new FTR™ 1200.

In order to meet a growing and diverse consumer, not only are we offering them motorcycles that meet with their lifestyle, we are also developing apparel that is designed to look great both on and off the bike.

**For SS20 we introduce three distinct collections; Heritage, Rogue and Moto.** All are carefully designed, with individual styling cues, to meet the needs of our growing rider group and you, as dealers, now have apparel that will help support that growth.

### DEALER CUSTOMIZATION PROGRAM

**To ensure product quality, only authorized Indian Motorcycle® apparel & gifts can be retailed in our dealer network.**

As an Indian Motorcycle® dealer you and your dealership serve as brand representatives. It is crucial that your store carry, promote and sell official Indian Motorcycle® merchandise.

**Blueprint Apparel and Tom's T's are approved vendors for custom dealer products.**

Both offer name drop or full custom options to the Indian Motorcycle® dealer network. Blueprint Apparel also offers custom gift options as well as children's tees and Indian Motorcycle® Racing custom tees. See page 68-69 for further information.

### OFFICIAL LICENSED PRODUCTS

The following partners offer a range of high quality products you can order from Indian Motorcycle® directly and take advantage of additional revenue and margin opportunities.

- Custom Dealer Tees:** Blueprint Apparel – P. 68
- Jack Daniel's® Apparel:** P. 69
- Cigars:** Indian Motorcycle® Cigars – P. 88
- Signs:** Meissenburg Designs – P. 89
- Jewelry:** King Baby® – P. 90
- Games Room Range:** Holland Bar Stool – P. 91

Visit the pages listed above for details and how to order.

### FINAL SEASON // FINAL SEASON

Products marked "Final Season" are only available while stock lasts and will be obsolete after Spring/Summer 2020. Clear out your stock ASAP so you can reinvest in current lines. Mark-down Final Season stock in your store to sell it quicker.

**The following are Final Season and should be cleared:**

- Shift Jacket, P. 12
- Drifter Mesh Glove, P. 22
- Fingerless Glove, P. 22
- Deerskin Strap Glove, P. 23
- Freeway Helmet & Visor, P. 25
- Scout® Open Face Helmet, P. 29
- Men's Mesh Sneaker, P. 33
- Men's Sneaker, P. 33
- Women's Tall Engineer Boot, P. 34
- Men's Worthington Boot, P. 35
- Wrecking Crew Tee, P. 41
- Hand Painted Tee, Red, P. 44
- LS Wrecking Crew Tee, P. 47
- Wrecking Crew Stripe Sweat, P. 51
- Icon Qtr Zip Fleece, P. 51
- Shop Shirt, Antique White, P. 52

- Washed Twill Shirt, P. 53
- Plaid Shirt, Gray, P. 55
- Women's Side Lace Tank, P. 57
- Women's Open Back Tank, P. 58
- Women's Headdress Tank, P. 58
- Women's Snow Wash Tank, P. 58
- Women's Wrecking Crew Tee, P. 60
- Women's IMC Marl Tee, P. 60
- Women's Stripe Sleeve Tee, P. 62
- Women's Open Back Icon Tee, P. 62
- Women's IMC Bike Raglan Tee, P. 63
- Women's LS Wrecking Crew Tee, P. 63
- Women's Casual Hoodie, P. 65
- Coste Goggle, P. 73
- Waxed Cotton Tote, P. 82



PRINTED SLEEVE TEE  
PAGE 46



LS MOTOCROSS TEE  
PAGE 47

**ROGUE**

**Rogue Collection** – Blacked-out style personifies the Rogue Collection. This range has been designed for the rider who wants simple, clean lines with tones of black and gray, fitting perfectly with motorcycles like the Chieftain Dark Horse®.

**MOTO**

**Moto Collection** – A contemporary moto-fashion inspired range, designed for the rider who likes modern design, bold graphics and colors. The Moto collection is inspired by bikes like the FTR1200™.

**WHAT TO ORDER**

**STOCKING FOR THE SEASON**

To determine a typical size run for a jacket, look at your retail velocity and demographic. Below is example sizing typically needed for one jacket or casualwear item depending on the size of your dealership.

CASUALWEAR		
	Men's	Women's
S		1
M	1	2
L	2	2
XL	2	1
2X	1	

JACKETS		
	Men's	Women's
S		1
M	1	2
L	2	2
XL	2	1
2X	1	

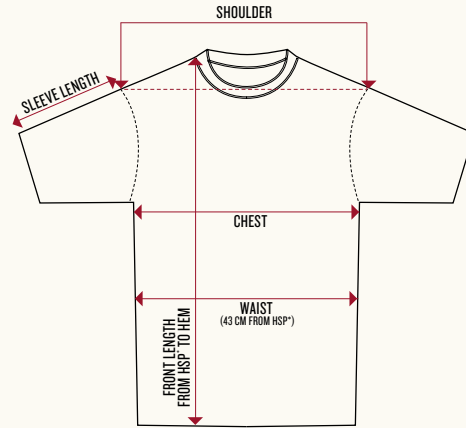
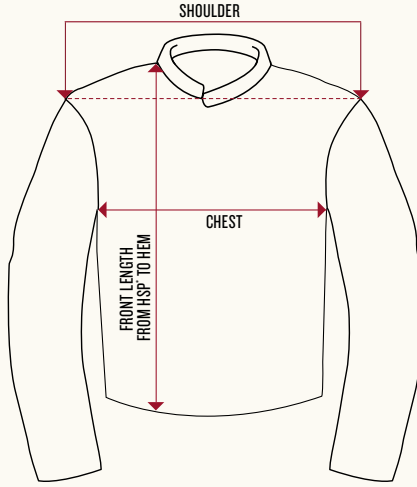
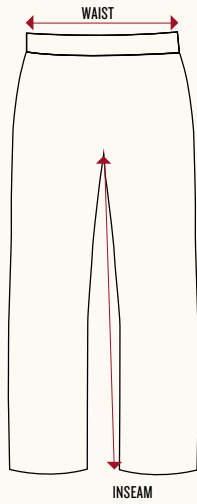
**To get the best out of your upcoming order, ensure you have the right mix of products for the Spring/Summer 2020 season.** Your selections directly affect your season's apparel sales performance, including profitability and customer satisfaction.

**BEFORE YOU ORDER**

- Consider what budget you have for this collection.
- Your retail space needs to work to its maximum potential. Do not under or over-fill your apparel display. Focus on fewer styles in greater stock depth, so you have sizes available in store for customers to purchase.
- This range arrives with the 2020 riding season. Stock the right amount of product to maximize apparel and gift sales, online and in-store. Make sure you introduce the apparel range when selling new vehicles.
- What is Final Season, and will be obsolete with the new collection?
- Consider your demand during events throughout the season, e.g. Open Houses, Demo Days, etc.
- Don't be too conservative. If you believe in a product you will sell it. You won't sell anything new if you don't present anything new.
- Buy products you like, but make sure you have something for every rider/buyer that comes into your dealership.

**If you don't stock what your customers want, they will go somewhere else to buy their product!**

# APPAREL SIZE CHARTS



MEN'S V-TWIN FIT JACKETS												
SIZE	CHEST		SHOULDER		RIDE LEATHER FRONT LENGTH FROM HSP*		RIDE TEXTILE FRONT LENGTH FROM HSP*		MESH FRONT LENGTH FROM HSP*		RIDE CASUAL FRONT LENGTH FROM HSP*	
	IN	CM	IN	CM	IN	CM	IN	CM	IN	CM	IN	CM
XS	40.2 - 41.7	102 - 106	20.1	51	25.2	64	25.6	65	25.6	65	25.6	65
S	43.3 - 44.9	110 - 114	20.5	52	25.6	65	26.0	66	26.0	66	26.0	66
M	46.5 - 48	118 - 122	20.9	53	26.0	66	26.4	67	26.4	67	26.4	67
L	49.6 - 51.2	126 - 130	21.3	54	26.4	67	26.8	68	26.8	68	26.8	68
XL	53.5 - 55.1	136 - 140	22.0	56	27.2	69	27.6	70	27.6	70	27.6	70
XL-TALL	53.5 - 55.1	136 - 140	22.0	56	28.7	73	/	/	29.1	74	29.1	74
2XL	57.5 - 59	146 - 150	22.8	58	28.0	71	28.3	72	28.3	72	28.3	72
2XL-TALL	57.5 - 59	146 - 150	22.8	58	29.5	75	/	/	29.9	76	29.9	76
3XL	61.4 - 63	156 - 160	23.6	60	28.7	73	29.1	74	29.1	74	29.1	74
3XL-TALL	61.4 - 63	156 - 160	23.6	60	30.3	77	/	/	30.7	78	30.7	78
4XL	65.4 - 66.9	166 - 170	24.4	62	29.5	75	29.9	76	29.9	76	29.9	76
5XL	69.3 - 70.9	176 - 180	25.2	64	30.3	77	30.7	78	30.7	78	30.7	78

MEN'S V-TWIN FIT VESTS						
SIZE	CHEST		SHOULDER		FRONT LENGTH FROM HSP*	
	IN	CM	IN	CM	IN	CM
XS	39 - 40.2	99 - 102	17.7	45	27.0	68.5
S	42.1 - 43.3	107 - 110	18.1	46	27.4	69.5
M	45.3 - 46.5	115 - 118	18.5	47	27.8	70.5
L	48.4 - 49.6	123 - 126	18.9	48	28.1	71.5
XL	52.4 - 53.5	133 - 136	19.7	50	28.9	73.5
2XL	56.3 - 57.5	143 - 146	20.5	52	29.7	75.5
3XL	60.2 - 61.4	153 - 156	21.3	54	30.5	77.5
4XL	64.2 - 65.4	163 - 166	22.0	56	31.3	79.5
5XL	68.1 - 69.3	173 - 176	22.8	58	40.0	101.5

MEN'S RELAXED FIT JACKETS						
SIZE	CHEST		SHOULDER		FRONT LENGTH FROM HSP*	
	IN	CM	IN	CM	IN	CM
S	50	127	20.4	51.8	24.5	62
M	52.5	133.3	21	53.3	25	63.5
L	58	147.3	22	55.9	26	65.5
XL	62.5	158.8	23	58.4	26.5	67
2XL	66	167.6	24	61	27	69
3XL	68	172.7	24.5	62.2	27.5	70

Relaxed fit is wider in the shoulder, body and sleeve and shorter in body length than the V-Twin fit.

MEN'S CHAPS				
SIZE	WAIST		INSEAM	
	IN	CM	IN	CM
M	35	89	33	84.5
L	38	97	33	84.5
XL	41	105	33	84.5
2XL	44.5	113	33	84.5
3XL	47.5	121	33	84.5
4XL	51	129	33	84.5
5XL	54	137	33	84.5

RAINSUIT- JACKET						
SIZE	CHEST		SHOULDER		FRONT LENGTH FROM HSP*	
	IN	CM	IN	CM	IN	CM
XS	44.9	114	21.3	54	27.0	68.5
S	48.0	122	21.7	55	27.4	69.5
M	51.2	130	22.0	56	27.8	70.5
L	54.3	138	22.4	57	28.1	71.5
XL	58.3	148	23.2	59	28.9	73.5
2XL	62.2	158	24.0	61	29.7	75.5
3XL	66.1	168	24.8	63	30.5	77.5
4XL	70.1	178	25.6	65	31.3	79.5
5XL	74.0	188	26.4	67	32.1	81.5

RAINSUIT- PANTS				
SIZE	WAIST (RELAXED)		INSEAM	
	IN	CM	IN	CM
XS	33.1	84	31.9	81
S	34.6	88	32.3	82
M	36.2	92	32.7	83
L	39.4	100	33.3	84.5
XL	42.5	108	33.9	86
2XL	45.7	116	34.4	87.5
3XL	48.8	124	35.0	89
4XL	52.0	132	35.6	90.5
5XL	55.1	140	36.2	92

WOMEN'S V-TWIN FIT JACKETS												
SIZE	CHEST		SHOULDER		RIDE LEATHER FRONT LENGTH FROM HSP*		RIDE MESH FRONT LENGTH FROM HSP*		LEATHER CASUAL FRONT LENGTH FROM HSP*		TEXTILE CASUAL FRONT LENGTH FROM HSP*	
	IN	CM	IN	CM	IN	CM	IN	CM	IN	CM	IN	CM
XS	37.0	94	16.5	42	24.0	61	25.8	65.5	22.4	57	24.4	62
S	39.4	100	16.9	43	24.8	63	26.6	67.5	23.2	59	25.2	64
M	41.7	106	17.3	44	25.6	65	27.4	69.5	24.0	61	26.0	66
L	44.1	112	17.7	45	26.4	67	28.1	71.5	24.8	63	26.8	68
XL	47.2	120	18.5	47	27.2	69	28.9	73.5	25.6	65	27.6	70
2XL	50.4	128	19.3	49	28.0	71	29.7	75.5	26.4	67	28.3	72
3XL	53.5	136	20.1	51	28.7	73	30.5	77.5	27.2	69	29.1	74

WOMEN'S V-TWIN FIT VESTS						
SIZE	CHEST		SHOULDER		FRONT LENGTH FROM HSP*	
	IN	CM	IN	CM	IN	CM
XS	34.6	88	10.8	27.5	21.3	54
S	37.0	94	11.4	29	22.0	56
M	39.4	100	12.0	30.5	22.8	58
L	41.7	106	12.6	32	23.6	60
XL	44.9	114	13.4	34	24.4	62
2XL	48.0	122	14.2	36	25.2	64
3XL	51.2	130	15.0	38	26.0	66
1W	69.7	177	12.6	32	24.4	62
2W	49.2	125	13.4	34	25.2	64
3W	52.4	133	14.2	36	26.0	66

WOMEN'S CHAPS				
SIZE	WAIST		INSEAM	
	IN	CM	IN	CM
S	35.5	90	33	83.5
M	37	94	33	83.5
L	40	102	33	83.5
XL	43	110	33	83.5
2XL	46.5	118	33	83.5
3XL	50	126	33	83.5
4XL	53	134	33	83.5
5XL	56	142	33	83.5

PART NUMBER SIZE GUIDE- APPAREL**																
SIZE	XS	S	M	L	LT	XL	XL/T	2XL	2XL/T	3XL	3XL/T	4XL	5XL	1W	2W	3W
PART #	01	02	03	06	08	09	11	12	13	14	20	15	16	17	18	19

\*\*Based on the size you are ordering, add the above number to the end of the item's part number. LT, XL/T, 2XL/T, 3XL/T are tall sizes.

PART NUMBER SIZE GUIDE- FOOTWEAR**												
SIZE	05	06	07	08	09	10	11	12	13			
PART #	05	06	07	08	09	10	11	12	13			

\*\*Based on the size you are ordering, add the above number to the end of the item's part number.

MEN'S TEES								
SIZE	CHEST		SHOULDER		FRONT LENGTH FROM HSP*		SLEEVE LENGTH	
	IN	CM	IN	CM	IN	CM	IN	CM
S	18.5	47	17.3	44	28.0	71	7.5	19
M	20.5	52	18.9	48	28.7	73	8.3	21
L	22.4	57	20.5	52	29.5	75	9.1	23
XL	24.4	62	22.0	56	30.3	77	9.8	25
2XL	26.4	67	23.6	60	31.1	79	10.6	27
3XL	28.3	72	25.2	64	31.9	81	11.4	29
4XL	31.3	79.5	27.6	70	33.1	84	12.6	32
5XL	34.3	87	29.9	76	34.3	87	13.8	35

MEN'S FASHION FIT TEES								
SIZE	CHEST		SHOULDER		FRONT LENGTH FROM HSP*		SLEEVE LENGTH	
	IN	CM	IN	CM	IN	CM	IN	CM
S	18.5	47	17.5	44.5	28.3	72	6.7	17
M	20.5	52	19.1	48.5	29.1	74	7.5	19
L	22.4	57	20.7	52.5	29.9	76	8.3	21
XL	24.4	62	22.2	56.5	30.7	78	9.1	23
2XL	26.4	67	23.8	60.5	31.5	80	9.8	25
3XL	28.3	72	25.4	64.5	32.3	82	10.6	27

**FASHION FIT TEES**

A close fit made in a lighter weight jersey, giving a comfortable and sleek silhouette.

MEN'S SLEEVELESS TEES						
SIZE	CHEST		SHOULDER		FRONT LENGTH FROM HSP*	
	IN	CM	IN	CM	IN	CM
S	18.5	47	16.1	41	28.0	71
M	20.5	52	17.7	45	28.7	73
L	22.4	57	19.3	49	29.5	75
XL	24.4	62	20.9	53	30.3	77
2XL	26.4	67	22.4	57	31.1	79
3XL	28.3	72	24.0	61	31.9	81
4XL	31.3	79.5	26.4	67	33.1	84
5XL	34.3	87	28.7	73	34.3	87

MEN'S HOODIES & SWEATS						
SIZE	CHEST		SHOULDER		FRONT LENGTH FROM HSP*	
	IN	CM	IN	CM	IN	CM
S	20.1	51	18.1	46	26.8	68
M	22.0	56	19.7	50	27.6	70
L	24.0	61	21.3	54	28.3	72
XL	26.0	66	22.8	58	29.1	74
2XL	28.0	71	24.4	62	29.9	76
3XL	29.9	76	26.0	66	30.7	78
4XL	32.9	83.5	28.3	72	31.9	81
5XL	35.8	91	30.7	78	33.1	84

MEN'S SHIRTS						
SIZE	CHEST		SHOULDER		FRONT LENGTH FROM HSP*	
	IN	CM	IN	CM	IN	CM
S	20.1	51	18.1	46	29.9	76
M	22.0	56	19.7	50	30.7	78
L	24.0	61	21.3	54	31.5	80
XL	26.0	66	22.8	58	32.3	82
2XL	28.0	71	24.4	62	33.1	84
3XL	29.9	76	26.0	66	33.9	86
4XL	32.9	83.5	28.3	72	35.0	89
5XL	35.8	91	30.7	78	36.2	92

WOMEN'S TEES- CLOSE FIT (STRETCH FABRIC)								
SIZE	CHEST		WAIST		SHOULDER		FRONT LENGTH FROM HSP*	
	IN	CM	IN	CM	IN	CM	IN	CM
XS	15.4	39	13.4	34	15.0	38	25.6	65
S	16.5	42	14.6	37	15.6	39.5	26.0	66
M	17.7	45	15.7	40	16.1	41	26.4	67
L	18.9	48	16.9	43	16.7	42.5	26.8	68
XL	20.5	52	18.5	47	17.5	44.5	27.2	69
2XL	22.0	56	20.1	51	18.3	46.5	27.6	70
3XL	23.6	60	21.7	55	19.1	48.5	28.0	71

WOMEN'S TEES- RELAXED FIT								
SIZE	CHEST		WAIST		SHOULDER		FRONT LENGTH FROM HSP*	
	IN	CM	IN	CM	IN	CM	IN	CM
XS	16.9	43	15.2	38.5	15.4	39	24.8	63
S	18.1	46	16.3	41.5	15.9	40.5	25.2	64
M	19.3	49	17.5	44.5	16.5	42	25.6	65
L	20.5	52	18.7	47.5	17.1	43.5	26.0	66
XL	22.0	56	20.3	51.5	17.9	45.5	26.4	67
2XL	23.6	60	21.9	55.5	18.7	47.5	26.8	68
3XL	25.2	64	23.4	59.5	19.5	49.5	27.2	69

WOMEN'S TANKS- CLOSE FIT						
SIZE	CHEST		WAIST		FRONT LENGTH FROM HSP*	
	IN	CM	IN	CM	IN	CM
XS	15.4	39	13.4	34	25.2	64
S	16.5	42	14.6	37	25.6	65
M	17.7	45	15.7	40	26.0	66
L	18.9	48	16.9	43	26.4	67
XL	20.5	52	18.5	47	26.8	68
2XL	22.0	56	20.1	51	27.2	69
3XL	23.6	60	21.7	55	27.6	70

WOMEN'S TANKS- RELAXED FIT						
SIZE	CHEST		WAIST		FRONT LENGTH FROM HSP*	
	IN	CM	IN	CM	IN	CM
XS	16.9	43	15.2	38.5	24.0	61
S	18.1	46	16.3	41.5	24.4	62
M	19.3	49	17.5	44.5	24.8	63
L	20.5	52	18.7	47.5	25.2	64
XL	22.0	56	20.3	51.5	25.6	65
2XL	23.6	60	21.9	55.5	26.0	66
3XL	25.2	64	23.4	59.5	26.4	67

WOMEN'S HOODIES & SWEATS								
SIZE	CHEST		WAIST		SHOULDER		FRONT LENGTH FROM HSP*	
	IN	CM	IN	CM	IN	CM	IN	CM
XS	19.3	49	17.7	45	17.5	44.5	24.8	63
S	20.5	52	18.9	48	18.1	46	25.2	64
M	21.7	55	20.1	51	18.7	47.5	25.6	65
L	22.8	58	21.3	54	19.3	49	26.0	66
XL	24.4	62	22.8	58	20.1	51	26.4	67
2XL	26.0	66	24.4	62	20.9	53	26.8	68
3XL	27.6	70	26.0	66	21.7	55	27.2	69

WOMEN'S SHIRTS								
SIZE	CHEST		WAIST		SHOULDER		FRONT LENGTH FROM HSP*	
	IN	CM	IN	CM	IN	CM	IN	CM
XS	17.3	44	16.1	41	15.4	39	25.0	63.5
S	18.5	47	17.3	44	15.9	40.5	25.4	64.5
M	19.7	50	18.5	47	16.5	42	25.8	65.5
L	20.9	53	19.7	50	17.1	43.5	26.2	66.5
XL	22.4	57	21.3	54	17.9	45.5	26.6	67.5
2XL	24.0	61	22.8	58	18.7	47.5	27.0	68.5
3XL	25.6	65	24.4	62	19.5	49.5	27.4	69.5

MEN'S GLOVES		
HAND CIRCUMFERENCE		
SIZE	IN	CM
S	8.1	20.65
M	8.4	21.45
L	8.8	22.25
XL	9.1	23.05
2XL	9.4	23.85
3XL	9.7	24.65
4XL	10	25.45

WOMEN'S GLOVES		
HAND CIRCUMFERENCE		
SIZE	IN	CM
S	7.2	18.3
M	7.5	19.1
L	7.8	19.9
XL	8.2	20.7

MEN'S FOOTWEAR				
USA	EU	UK	IN	CM
7	39	6	9.8	25
8	41	7	10.2	26
9	42	8	10.6	27
10	43	9	11	28
11	44.5	10	11.4	29
12	46	11	11.8	30
13	47	12	12.2	31

WOMEN'S FOOTWEAR				
USA	EU	UK	IN	CM
5	35	2.5	8.7	22
6	36	3.5	9	23
7	37.5	4.5	9.4	24
8	38.5	5.5	9.8	25
9	40	6.5	10.2	26
10	41.5	7.5	10.6	27
11	42.5	8.5	11	28

HELMETS			
SIZE	HAT SIZE	IN	CM
XS	6 3/4	21.3	54
S	6 7/8 - 7	21.7 - 22	55 - 56
M	7 1/8 - 7 1/4	22.4 - 22.8	57 - 58
L	7 3/8 - 7 1/2	23.2 - 23.6	59 - 60
XL	7 5/8 - 7 3/4	24 - 24.4	61 - 62
2XL	7 7/8 - 8	24.8 - 25.2	63 - 64
3XL	8 1/8 - 8 1/4	25.6 - 26	65 - 66
4XL	8 3/8 - 8 1/2	26.4 - 26.8	67 - 68

BELTS		
SIZE	IN	CM
S	30 - 34	76 - 86
M	34 - 38	86 - 96
L	38 - 42	96 - 106
XL	42 - 46	106 - 116
2XL	46 - 50	116 - 126

\*High Shoulder Point (HSP).





HERITAGE

VENTED

NEW

**GETAWAY JACKET, BROWN**

CE

A modern classic brown leather riding jacket. Ventilation zips on sleeves and back to keep cool in warmer temperatures. This jacket has protectors that are lightweight, slim, very flexible and highly protective, making them feel invisible when worn. Contrast suede and embroidery Indian Motorcycle® branding on back body panel.

**FEATURES**

- 0.9-1.0mm leather shell
- Fixed lining
- Removable liner- quilted vest
- 4 exterior & 1 interior pocket
- Snap cuffs
- V-Twin Fit
- CE certified; EU Regulation 2016/425
- FprEN 17092-4:2019

**ADDITIONAL FEATURES**

Removable slim, lightweight & flexible protectors to shoulders & elbows (EN1621-1:2012)

**XS-3XL**  
US: \$499.99

**2860501**  
CAN: \$649.99



HERITAGE

LARGE SIZES

**CLASSIC JACKET 2, BROWN**

CE

AVAILABLE FOR DELIVERY NOW

A true Indian Motorcycle® classic. This timeless style jacket features a slightly worn dark brown leather. Snap down collar stops any flapping when riding. The jacket also features a removable quilted plaid liner for cooler days.

**FEATURES**

- 1.2-1.4mm thick leather shell
- Fixed lining- plaid
- Removable liner- quilted plaid vest
- 2 exterior, 1 chest & 1 interior pocket
- Zippered side expansion panels; snap wrist adjustment tabs
- V-Twin Fit
- CE certified; Directive 89/686/CE V06.
- French Protocol Level 1

**ADDITIONAL FEATURES**

Removable CE protectors in shoulders & elbows; snap down collar; antique brass zippers; embroidered script logo on front left; applique/embroidered script logo on back; circle headdress patch on right sleeve

**S-5XL**  
US: \$499.99

**2867669**  
CAN: \$649.99



HERITAGE

VENTED

**LIBERTY JACKET, BLACK**

AVAILABLE FOR DELIVERY NOW

This Made in USA horsehide jacket is everlasting. Horsehide is a very dense, durable leather which is non porous (non absorbent) and has a natural ability to repel moisture. It has a removable quilted liner for cooler rides and lacing at the sides for adjustability.

**FEATURES**

- 1.2-1.4mm thick horsehide leather shell
- Fixed lining- airmesh
- Removable liner- quilted vest
- Hidden ventilation panels on front & back
- 2 exterior & 2 interior pockets
- Side lace adjustment & zippered cuffs
- Relaxed Fit

**ADDITIONAL FEATURES**

Removable CE protectors in shoulders & elbows; action back; embroidered logo on back; headdress patch on right sleeve; oval quality patch on left sleeve

**S-3XL**  
US: \$849.99

**2867998**  
CAN: \$1,104.99

**MADE IN**  
★ ★ ★ ★ ★  
**U.S.A.**  
★ ★ ★ ★ ★



LARGE SIZES

**OUTSIDER VEST, BLACK**

AVAILABLE FOR DELIVERY NOW

This black leather vest is a modern classic. It features secure chest pockets with flaps and zip adjustable sides.

**FEATURES**

- 0.9-1.0mm thick leather shell
- Fixed lining
- 4 exterior & 1 interior pocket
- Zip side expansion panels
- V-Twin Fit

S-5XL      2868674  
US: \$229.99      CAN: \$259.99



LARGE SIZES

**INDIAN MOTORCYCLE® VEST 2, BLACK**

AVAILABLE FOR DELIVERY NOW

This black leather vest with laced side seams is a traditional staple for the cruiser rider. The laces can be adjusted to allow expansion where needed. The logos are a combination of embroidery and leather applique.

**FEATURES**

- 1.0-1.2mm thick dull leather shell
- Fixed lining
- 2 exterior & 1 interior pocket
- Lace up sides
- V-Twin Fit

S-5XL      2863711  
US: \$149.99      CAN: \$194.99

HERITAGE

CASUAL

HERITAGE

CASUAL





LARGE SIZES

**INDIAN MOTORCYCLE® MEN'S CHAPS, BLACK**

AVAILABLE FOR DELIVERY NOW

These black leather chaps offer great adjustability across waist and thigh with stretchable heavy spandex, 2 full length zippers to make the leg looser or tighter and raw edge hems which can be cut to size.

**FEATURES**

- 1.0-1.2mm thick dull leather shell
- Fixed lining
- 3 exterior pockets
- Lacing at back; heavy spandex on thigh;
- double zip outseam
- Raw edge hem

**M-5XL**      **2863712**  
**US: \$249.99**      **CAN: \$324.99**



TALL SIZES // LARGE SIZES

**BECKMAN JACKET, BLACK**

AVAILABLE FOR DELIVERY NOW

A timeless leather riding jacket in jet black leather. The self colored stripes and angular panel lines are modern and masculine. Hidden vents help with airflow on warm days and a removable quilted liner offers insulation on cooler rides.

**FEATURES**

- 1.0-1.2mm leather shell
- Fixed lining- airmesh
- Removable liner- quilted vest
- Hidden ventilation panels on arms & back
- 2 exterior & 1 internal pocket
- Side adjust zippers & snap wrist cuffs
- V-Twin Fit
- CE certified; EU Regulation 2016/425 prEN 17092-4:2018

**S-5XL, XLT-3XLT**      **2869635**  
**US: \$399.99**      **CAN: \$519.99**



**ADDITIONAL FEATURES**

- Removable CE protectors in shoulders & elbows (EN 1621-1:2012);
- action back; antique brass zippers; reflective piping on back;
- embroidered logo on front; applique & embroidered branding on back;
- snap down collar

CASUAL HERITAGE

ROGUE VENTED



**NEW** // TALL SIZES // LARGE SIZES

**LIGHTWEIGHT MESH 2 JACKET, BLACK**



A fresh update on the popular Lightweight Mesh Riding Jacket. Bold branding on the front body panels. Full mesh construction offers maximum airflow for the warmest days with contrast panels on sleeves and side body. A removable lightweight windproof liner offers insulation on cool mornings.

HERITAGE  
MESH

**FEATURES**

Fixed lining- airmesh  
Windproof removable liner- long sleeve  
2 exterior & 1 interior pocket  
Snap cuff & hem adjuster  
V-Twin Fit  
CE certified; EU Regulation 2016/425  
FprEN 17092-4:2019

**ADDITIONAL FEATURES**

Removable slim, lightweight & flexible protectors to shoulders & elbows (EN1621-1:2012); reflective piping on shoulder and center back neck

**XS-5XL, XLT-3XLT 2860502**  
**US: \$219.99 CAN: \$284.99**



// TALL SIZES // LARGE SIZES

**SPRINGFIELD MESH 2 JACKET, BLACK**



AVAILABLE FOR DELIVERY NOW

A slick update on the original Springfield Mesh jacket for riding in warmer climates. Mesh panels allow air to flow freely helping the rider stay cool. There are leather powerstretch panels on the elbows for flexibility. A removable lightweight windproof liner offers insulation when temperatures drop.

HERITAGE  
MESH

**FEATURES**

Fixed lining- airmesh  
Windproof removable liner- long sleeve  
2 exterior & 2 interior pockets  
Powerstretch elbow panels; zip side adjusters; snap cuff  
V-Twin Fit  
CE certified; EU Regulation 2016/425  
prEN 17092-4:2018

**ADDITIONAL FEATURES**

Removable CE protectors in shoulders & elbows (EN 1621-1:2012); action back; 3M® reflective piping; patch on chest; script logo embroidered & applique on back; headdress patch on right sleeve; American flag patch on left sleeve

**S-5XL, XLT-3XLT 2868916**  
**US: \$219.99 CAN: \$284.99**



LARGE SIZES

HERITAGE

**INDIAN MOTORCYCLE®  
COLOR BLOCK RAINSUIT - UNISEX, BLACK**

AVAILABLE FOR DELIVERY NOW

A two piece jacket and pant rainsuit constructed of waterproof and breathable nylon. Every seam is taped to ensure you stay dry in the rain. Designed to be worn over your leathers this is a large fit. The pant has removable suspenders.

WATERPROOF

**FEATURES**

- Fixed lining- airmesh
- 1 interior pocket
- Adjustable Velcro® cuffs & waist; stirrups;
- full length Velcro® on front opening to reinforce zip closure
- V-Twin Fit

**ADDITIONAL FEATURES**

- 100% waterproof & breathable; reflective piping;
- removable suspenders; stows into self storage bag attached to jacket lining; branding on the front, legs & back

XS-5XL  
US: \$179.99

2867447  
CAN: \$234.99



FINAL SEASON

**SHIFT JACKET, BROWN**

CE

AVAILABLE FOR DELIVERY NOW. FINAL SEASON

A modern, utility look waxed cotton jacket with military inspired details around the shoulders, collar and underarms. Secure pocket details on the front add style and practicality.

HERITAGE

WAXED COTTON

**FEATURES**

Fixed lining  
Removable liner- quilted vest  
4 exterior & 2 interior pockets  
Zippered side expansion panels; snap cuffs  
V-Twin Fit  
CE certified; EU Regulation 2016/425  
FprEN 17092-4:2018

**ADDITIONAL FEATURES**

Removable CE protectors in shoulders & elbows; antique brass zippers; hidden snap down collar; action back; leather patch on front; woven patch at back neck

S-5XL  
US: \$299.99

2868996  
CAN: \$389.99

HERITAGE

VENTED

**FLAT TRACK JACKET, BLACK**

CE

AVAILABLE FOR DELIVERY NOW

A racing inspired jacket featuring colored panels and a removable quilted liner to keep the wearer warm and dry.

**FEATURES**

Fixed lining- airmesh  
Removable liner- quilted vest  
2 exterior & 1 interior pocket  
Snap cuffs  
V-Twin Fit  
CE certified; EU Regulation 2016/425  
prEN 17092-4:2018

**ADDITIONAL FEATURES**

Removable CE protectors in shoulders & elbows (EN 1621-1:2012); action back; snap down collar; contrast stripe detailing across sleeves; adjustable side tabs; embroidered & applique branding on front; American flag patch on left sleeve, Motor Oil patch on right sleeve

XS-3XL  
US: \$249.99

2869638  
CAN: \$324.99



ROGUE  
MESH

**SHADOW MESH JACKET, BLACK** CE

AVAILABLE FOR DELIVERY NOW

This is a full mesh riding jacket. Full mesh construction offers maximum air flow for the hot days. A removable lightweight windproof liner gives insulation for the cold days.

**FEATURES**

- Polyester mesh shell
- Fixed lining- airmesh
- Windproof removable liner
- 2 exterior & 1 interior pocket
- Side adjustment zips & snap cuffs
- V-Twin Fit
- CE certified; EU Regulation 2016/425 prEN 17092-4:2018

**ADDITIONAL FEATURES**

- Removable CE protectors in shoulders & elbows (EN 1621-1:2012); action back; antique brass zippers on waist pockets; leather patch on front & back; circle leather patch on right sleeve

**S-3XL**                      **2868889**  
**US: \$189.99**              **CAN: \$249.99**



ROGUE  
WATER REPELLENT

**ATLANTA JACKET, BLACK** CE

AVAILABLE FOR DELIVERY NOW

An on trend denim jacket that features water resistant fabric and zips. This jacket has protectors that are lightweight, slim, very flexible and highly protective, making them feel almost invisible when worn. It makes the jacket very comfortable, with a slimmer profile shoulder and elbow, but still provides the level of protection as other CE certified protectors.

**FEATURES**

- Unlined, seam sealed
- 4 exterior pockets
- Side adjustment zips; snap cuffs
- V-Twin Fit
- CE certified; EU Regulation 2016/425 prEN 17092-4:2018

**ADDITIONAL FEATURES**

- Removable CE protectors in shoulders and elbows (EN 1621-1:2012); water resistant zippers; snap collar; woven patch at back neck

**XS-3XL**                      **2869726**  
**US: \$299.99**              **CAN: \$389.99**



ROGUE  
VENTED

**LARGE SIZES**  
**FLINT JACKET, BLACK** CE

AVAILABLE FOR DELIVERY NOW

A water resistant jacket featuring contrast colored panels and a removable quilted liner to keep the wearer warm and dry. Ventilation panels allow cooling airflow on warmer days.

**FEATURES**

- Fixed Lining- airmesh
- Removable liner- quilted vest
- Hidden ventilation panels on arms & back
- Reflective piping on back
- 2 exterior & 1 interior pocket
- Side adjust zippers & snap wrist cuffs
- V-Twin Fit
- CE certified; EU Regulation 2016/425 prEN 17092-4:2018

**ADDITIONAL FEATURES**

- Removable CE protectors in shoulders & elbows (EN 1621-1:2012); action back; embroidered logo on front; applique & embroidered branding on back; snap down collar; circle headdress patch on right sleeve

**S-5XL**                      **2869636**  
**US: \$259.99**              **CAN: \$339.99**



**NEW** // TALL SIZES // LARGE SIZES

**ROGUE CASUAL** **SOFTSHELL CASUAL JACKET, BLACK**

A casual hooded softshell jacket with fleece interior, offers warmth and wind resistance on cooler days.

**FEATURES**

- Unlined
- 3 exterior pockets
- Hood
- Reflective trim on hood and chest zipper
- V-Twin Fit

**XS-5XL, XLT-3XLT 2869741**  
**US: \$129.99 CAN: \$169.99**



// LARGE SIZES

**ROGUE CASUAL** **BOMBER JACKET, BLACK**

AVAILABLE FOR DELIVERY NOW

This is a lightweight casual jacket with large branding on the back.

**FEATURES**

- Fixed lining
- 3 exterior & 2 interior pockets
- Rib knit collar, cuffs & hem
- Snap close waist pockets
- V-Twin Fit

**S-5XL 2867631**  
**US: \$119.99 CAN: \$155.99**



**ROGUE CASUAL** **THERMO UNDERVEST, BLACK**

AVAILABLE FOR DELIVERY NOW

Layering up is the key to a warm core. This lightweight vest can be worn under a jacket or on its own.

**FEATURES**

- Fixed lining
- 100% nylon with 100% polyester filling
- Two zip hand warmer pockets
- Zip chest pocket

**S-3XL 2869742**  
**US: \$119.99 CAN: \$155.99**

GOLD AVIATOR SUNGLASSES  
PAGE 70



**NEW**

**BURT JACKET, GRAY**

**MOTO**

A casual twill weave jacket with quilted lining and large Indian Motorcycle® branding on back.

**CASUAL**

**FEATURES**

Fixed lining  
4 exterior pockets  
V-Twin Fit

**S-3XL**

**US: \$149.99**

**2860509**

**CAN: \$194.99**



**RETRO VEST, GRAY**

AVAILABLE FOR DELIVERY NOW

**MOTO**

A modern styled, waxed cotton vest great for layering over a tee when the weather cools.

**WAXED COTTON**

**FEATURES**

Fixed lining  
3 exterior & 1 interior pocket  
Side adjustment tabs  
V-Twin Fit

**XS-3XL**

**US: \$139.99**

**2869725**

**CAN: \$179.99**



NEW



CE

HERITAGE  
MESH

**LIGHTWEIGHT MESH 2 JACKET, BLACK**

A fresh update on the popular Lightweight Mesh Riding Jacket with bold branding. Full mesh construction offers maximum airflow for the warmest days with contrast panels on sleeves and side body. A removable lightweight windproof liner offers insulation on cool mornings.

**FEATURES**

Fixed lining- airmesh  
Windproof removable liner- long sleeve  
2 exterior & 1 interior pocket  
Snap cuff and hem adjuster  
Women's V-Twin Fit  
CE certified; EU Regulation 2016/425  
FprEN 17092-4:2019

**XS-3XL**      **2860503**  
**US: \$209.99**      **CAN: \$269.99**

**ADDITIONAL FEATURES**

Removable slim, lightweight & flexible protectors in shoulders & elbows (EN1621-1:2012); reflective piping on shoulder and center back neck



CE

HERITAGE  
MESH

**SPRINGFIELD MESH 2 JACKET, BLACK**

AVAILABLE FOR DELIVERY NOW

A slick update on the original Springfield Mesh jacket for riding in warmer climates. Mesh panels allow air to flow freely, helping the rider stay cool. There are leather powerstretch panels on the elbows for flexibility. A removable lightweight windproof liner offers insulation when temperatures drop.

**FEATURES**

Fixed lining- airmesh  
Windproof removable liner- long sleeve  
2 exterior & 2 interior pockets  
Powerstretch elbow panels;  
zip side panels; snap cuffs  
Women's V-Twin Fit  
CE certified; EU Regulation 2016/425  
prEN 17092-4:2018

**XS-3XL**      **2869625**  
**US: \$209.99**      **CAN: \$269.99**

**ADDITIONAL FEATURES**

Removable CE protectors in shoulders & elbows (EN 1621-1:2012); 3M<sup>®</sup> reflective piping; action back; patch on chest; script logo applique & embroidered on back; leather logo patch on back; headdress patch on right sleeve; American flag patch on left sleeve





ROGUE  
VENTED

**BLAKE JACKET, BLACK**

AVAILABLE FOR DELIVERY NOW

A soft black leather jacket with stretch side panels and contrast color twin racing stripes across the sleeves. Jacket has modern Indian Motorcycle® branding on the back panel and also features a removable quilted liner for cooler days. This jacket has protectors that are lightweight, slim, very flexible and highly protective, making them feel almost invisible when worn. It makes the jacket very comfortable, with a slimmer profile shoulder and elbow, but still provides the level of protection as other CE certified protectors.



**FEATURES**

- Fixed lining
- Removable liner- quilted vest
- 2 exterior & 1 interior pocket
- Adjustable hem tabs; snap cuffs; stretch side panels
- Women's V-Twin Fit
- CE certified; EU Regulation 2016/425
- FprEN 17092-4:2018

**ADDITIONAL FEATURES**

- Removable CE protectors in shoulders & elbows (EN 1621-1:2012); action back; applique & embroidered logo on back; embossed circle headress logo on hem

**XS-3XL**                      **2869723**  
**US: \$449.99**                **CAN: \$589.99**

GOLD AVIATOR  
SUNGLASSES  
PAGE 70



NEW

**CHARLOTTE CASUAL JACKET, BLACK**

A flattering black leather jacket with decorative braided detail on front and back panels and large Indian Motorcycle® contrast branding on back body panel.

**FEATURES**

- Fixed lining
- 2 exterior & 1 interior pocket
- Zip cuffs
- Mandarin collar
- Women's V-Twin Fit

**XS-3XL**  
**US: \$269.99**

**2860504**  
**CAN: \$349.99**



NEW

**CHARLOTTE CASUAL VEST, BLACK**

A flattering black leather vest with decorative braided detail on front and back panels and large Indian Motorcycle® contrast branding on back body panel.

**FEATURES**

- Fixed lining
- 2 exterior & 1 interior pocket
- Women's V-Twin Fit

**XS-3XL**  
**US: \$199.99**

**2860505**  
**CAN: \$259.99**



LARGE SIZES

**INDIAN MOTORCYCLE® VEST 2, BLACK**

AVAILABLE FOR DELIVERY NOW

A traditional staple for cruiser riders. The side laces can be adjusted to allow expansion where needed. The logos are a combination of embroidery and leather applique. Branded rivets decorate the shoulder and back panel.

**FEATURES**

- 1.0-1.2mm thick leather shell
- Fixed lining
- 2 exterior & 1 interior pocket
- Lace up sides
- Women's V-Twin Fit

**XS-3XL, 1W-3W**  
US: \$149.99

**2863716**  
CAN: \$194.99



**INDIAN MOTORCYCLE® CHAPS, BLACK**

AVAILABLE FOR DELIVERY NOW

These black leather chaps offer great adjustability across waist and thigh with stretchable heavy spandex, 2 full length zippers to make the leg looser or tighter and raw edge hems which can be cut to size.

**FEATURES**

- Fixed lining
- 3 exterior pockets
- Lacing at back; heavy spandex on thigh
- Raw edge hem
- Double zip outseam

**S-5XL**  
US: \$229.99

**2863714**  
CAN: \$299.99

CASUAL HERITAGE

CASUAL HERITAGE



**NEW**

**LANA DENIM JACKET, BLACK**

This is a casual denim jacket with light wash for worn in look. Jacket has tonal embroidered icon logo on back neck.

**ROGUE**

**CASUAL**

**FEATURES**

- Unlined
- 4 exterior pockets
- Snap down collar
- Front zip covered with snap down placket
- Zip cuffs

**XS-3XL**  
**US: \$119.99**

**2860623**  
**CAN: \$155.99**

**NEW**

**LANA DENIM VEST, BLACK**

This is a casual denim vest with light wash for worn in look. Vest has tonal embroidered icon logo on back neck.

**ROGUE**

**CASUAL**

**FEATURES**

- Unlined
- 4 exterior pockets
- Snap down collar
- Front zip covered with snap down placket

**XS-3XL**  
**US: \$99.99**

**2860736**  
**CAN: \$129.99**

POM POM BEANIE  
PAGE 79



**NEW**

**SOFTSHELL JACKET, BLACK**

A casual hooded softshell jacket with fleece interior, offers warmth and wind resistance on cooler days.

**ROGUE**

**CASUAL**

**FEATURES**

- Unlined
- 3 exterior pockets
- Hood
- Reflective trim on hood and sleeve zipper
- Women's V-Twin Fit

**XS-3XL**      **2869754**  
**US: \$129.99**    **CAN: \$169.99**



**ROGUE**

**BOMBER JACKET, BLACK**

AVAILABLE FOR DELIVERY NOW

This is a lightweight casual jacket with large branding on the back.

**CASUAL**

**FEATURES**

- Fixed lining
- 3 exterior & 2 interior pockets
- Rib knit collar, cuffs & hem
- Snap close waist pockets
- Women's V-Twin Fit

**XS-3XL**      **2860508**  
**US: \$119.99**    **CAN: \$155.99**



**NEW**

## MESH 2 GLOVE, BLACK

CE

SUMMER

An update on our popular Mesh Glove. A combination of mesh to allow airflow and leather palm and finger panels construct this glove. The lightweight design offers very little bulk and is easy to wear in warm weather conditions.

### FEATURES

- Mesh glove with leather palm
- Gel padded palm
- Velcro® wrist closure
- Touchscreen index tip
- Mens & Womens CE certified; EU Regulation 2016/425. EN13594:2015

**MEN'S: S-4XL** 2860629  
**WOMEN'S: S-XL** 2860630  
**US: \$49.99** **CAN: \$67.99**

**FINAL SEASON**

## DRIFTER MESH GLOVE, BLACK

CE

AVAILABLE FOR DELIVERY NOW. FINAL SEASON

SUMMER

Constructed using a combination of mesh, to allow airflow, and leather palm and finger panels. This lightweight glove is easy to wear in warm weather conditions.

### FEATURES

- Mesh glove with leather palm & wrist
- Velcro® wrist closure
- Touchscreen leather on fingertip & thumb
- Mens CE certified; Directive 89/686/EEC. EN 13594:2015

**S-4XL** 2867449  
**US: \$59.99** **CAN: \$79.99**

**FINAL SEASON**

## FINGERLESS GLOVE, BLACK

AVAILABLE FOR DELIVERY NOW. FINAL SEASON

SUMMER

A cruiser style fingerless glove in black leather. A double leather and gel palm panel adds comfort. The hooks on the end of the finger tips allow the glove to be removed easily.

### FEATURES

- Full leather construction
- Gel padded palm
- Velcro® wrist closure
- Laser etched logo

**MEN'S: S-4XL** 2863720  
**WOMEN'S: S-XL** 2863721  
**US: \$44.99** **CAN: \$59.99**



**NEW**

## FLAT TRACK GLOVE, BLACK

CE

MID SEASON

This is a sporty riding glove with leather palm and neoprene back of hand construction. This glove offers hard knuckle protection.

### FEATURES

- Leather & neoprene construction
- Hard knuckle protector
- Velcro® wrist closure
- Mens CE certified; EU Regulation 2016/425. EN13594:2015

**S-4XL** 2860626  
**US: \$59.99** **CAN: \$79.99**





MID SEASON

NEW

**GETAWAY GLOVE, BROWN** CE

A modern classic brown leather glove for mid season riding.

**FEATURES**

Full leather construction  
Interior Lining  
Velcro® wrist closure  
Mens & Womens CE certified; EU Regulation 2016/425. EN13594:2015

**S-4XL**                      **2860624**  
**US: \$69.99**                **CAN: \$89.99**



MID SEASON

**PASSAGE GLOVE, BLACK** CE

AVAILABLE FOR DELIVERY NOW

A modern and stylish glove with hard knuckle protector, outer padding and Velcro® strap closure.

**FEATURES**

Mixed textile & leather construction  
Hard knuckle protector  
Velcro® wrist closure  
Touchscreen index & thumb tips  
Mens CE certified; Directive 89/686/EEC. EN 13594:2015

**S-4XL**                      **2868680**  
**US: \$49.99**                **CAN: \$67.99**



MID SEASON

NEW

**RETRO 2 GLOVE, BLACK** CE

An update on our popular Retro Glove. Black leather with Indian Motorcycle® red and cream leather panels. This glove is a perfect match to several of the Indian Motorcycle® jackets. The padded knuckle, double leather contrast palms and cool branding make this a stylish glove.

**FEATURES**

Full leather construction  
Padded knuckles  
Velcro® wrist closure  
Mens & Womens CE certified; EU Regulation 2016/425. EN13594:2015

**MEN'S: S-4XL**            **2860627**  
**WOMEN'S: S-XL**        **2860628**  
**US: \$69.99**                **CAN: \$89.99**



MID SEASON

**CLASSIC GLOVE, BLACK** CE

AVAILABLE FOR DELIVERY NOW

Mid season, classic black leather glove. Simple styling with double leather panels, perforated leather finger panels and Velcro® closure.

**FEATURES**

Full leather construction  
Perforated inner finger panels  
Exposed seam construction with double leather panel on palms  
Velcro® wrist closure  
Mens & Womens CE certified; EU Regulation 2016/425. EN13594:2015

**MEN'S: S-4XL**            **2869717**  
**WOMEN'S: S-XL**        **2869718**  
**US: \$59.99**                **CAN: \$79.99**



MID SEASON

**CINDER GLOVE, BROWN** CE

AVAILABLE FOR DELIVERY NOW

A sporty style glove with contrasting perforated panels, Velcro® closure, and emblem patch. Complements nicely with the Benjamin Jacket.

**FEATURES**

Full leather construction  
Padded palm  
Velcro® wrist closure  
Touchscreen fingertip & thumb  
Mens CE certified; Directive 89/686/EEC. EN 13594:2015

**S-4XL**                      **2868678**  
**US: \$69.99**                **CAN: \$89.99**



MID SEASON

FINAL SEASON

**DEERSKIN STRAP GLOVE, BROWN**

AVAILABLE FOR DELIVERY NOW. FINAL SEASON

A deerskin glove in a classic style with Velcro® closure for wearing mid season.

**FEATURES**

Full deerskin leather construction  
Heat branding on wrist  
Velcro® wrist closure

**S-4XL**                      **2868677**  
**US: \$74.99**                **CAN: \$99.99**



MID SEASON

**SOLO GLOVE, BLACK** CE

AVAILABLE FOR DELIVERY NOW

A strong and lightweight glove with hard knuckle protector offers protection and modern style.

**FEATURES**

Mixed textile & leather construction  
Hard knuckle protector  
Velcro® wrist closure  
Touchscreen fingertip & thumb  
Mens CE certified; Directive 89/686/EEC. EN 13594:2015

**S-4XL**                      **2868679**  
**US: \$59.99**                **CAN: \$79.99**



WINTER

**WINTER GLOVE, BLACK** CE

AVAILABLE FOR DELIVERY NOW

A warm insulated glove for winter riding, with hard knuckle protectors. A Velcro® wrist adjuster and draw cord cuff keep the cold out.

**FEATURES**

Mixed textile & leather construction  
Hard knuckle protector  
Velcro® wrist closure  
Touchscreen index & thumb tips  
Men's CE certified; EU Regulation 2016/425. EN13594:2015

**S-4XL**                      **2869729**  
**US: \$89.99**                **CAN: \$119.99**



## ADVENTURE HELMET - MATTE STRIPE, GRAY

AVAILABLE FOR DELIVERY NOW

### FEATURES

Matte finish  
100% fiberglass outer shell; EPS inner shell  
Fixed lining  
Weight: 1250g  
Safety: DOT certified; ECE certified

### ADDITIONAL FEATURES

Detachable cheek pads & sun peak;  
D-ring closure; goggle fastener at back;  
Bluetooth® compatible

<b>XS-2XL</b>	<b>2869727</b>
<b>US: \$269.99</b>	<b>CAN: \$349.99</b>



## ADVENTURE HELMET - GLOSS BLACK, BLACK

AVAILABLE FOR DELIVERY NOW

### FEATURES

Glossy finish  
100% fiberglass outer shell; EPS inner shell  
Fixed lining  
Weight: 1250g  
Safety: DOT certified; ECE certified

### ADDITIONAL FEATURES

Detachable cheek pads & sun peak;  
D-ring closure; goggle fastener at back;  
Bluetooth® compatible

<b>XS-2XL</b>	<b>2869728</b>
<b>US: \$259.99</b>	<b>CAN: \$339.99</b>



## OUTPOST HELMET, BLACK/RED

AVAILABLE FOR DELIVERY NOW

### FEATURES

Glossy ABS outer shell; EPS inner shell  
Removable, washable lining  
Weight: 1550g  
Safety: DOT certified; ECE certified

### ADDITIONAL FEATURES

Anti-fog Pinlock® 30, anti-scratch  
shield coatings; chin, top & rear vents;  
Bluetooth® compatible

<b>XS-2XL</b>	<b>2868682</b>
<b>US: \$229.99</b>	<b>CAN: \$299.99</b>







**FINAL SEASON**

**FREEWAY HELMET, BLACK**

AVAILABLE FOR DELIVERY NOW. FINAL SEASON

**FEATURES**

Matte ABS outer shell; EPS inner shell  
Removable, washable lining  
Weight: 1450g  
Safety: DOT certified; ECE certified

**ADDITIONAL FEATURES**

Anti-fog Pinlock® 30, anti-scratch shield coatings; chin & top vents; Bluetooth® compatible, inner sun visor

**XS-2XL                    2867453**  
**US: \$199.99            CAN: \$259.99**



**LIBERTY JET HELMET, BLACK**

AVAILABLE FOR DELIVERY NOW

**FEATURES**

Matte ABS outer shell; EPS inner shell  
Removable, washable lining  
Weight: 1250g  
Safety: DOT certified; ECE certified

**ADDITIONAL FEATURES**

Anti-scratch visor; top & rear vents; inner sun visor; Bluetooth® compatible

**XS-2XL                    2867454**  
**US: \$149.99            CAN: \$194.99**



**ADVENTURE HELMET SUNPEAK**

AVAILABLE FOR DELIVERY NOW

Only works with the following helmets, 2869727 & 2869728.

**ONE SIZE**  
**MATTE STRIPE            2869793**  
**WHITE                    2869794**  
**US: \$19.99                CAN: \$26.99**



**FINAL SEASON**

**FREEWAY FULL FACE HELMET VISOR**

AVAILABLE FOR DELIVERY NOW. FINAL SEASON

**ONE SIZE                    2867460**  
**US: \$19.99                CAN: \$25.99**



**LIBERTY JET HELMET VISOR**

AVAILABLE FOR DELIVERY NOW

**ONE SIZE                    2867461**  
**US: \$19.99                CAN: \$25.99**



**RETRO FULL FACE HELMET VISOR**

AVAILABLE FOR DELIVERY NOW

Only works with the following full face helmets, 2868683 & 2869630.

**ONE SIZE**  
**GRAY                        2868890**  
**CLEAR                      2868829**  
**US: \$19.99                CAN: \$24.99**





## MATTE STRIPE FULL FACE HELMET, BLACK

AVAILABLE FOR DELIVERY NOW

### FEATURES

UV lacquer finish  
100% fiberglass outer shell; EPS inner shell  
Fixed inner lining  
Weight: 1450g  
Safety: DOT certified; ECE certified

### ADDITIONAL FEATURES

Anti-fog Pinlock® 30, anti-scratch shield coatings; detachable cheek pads; D-ring closure; Bluetooth® compatible

**XS-2XL**      **2869630**  
**US: \$289.99**      **CAN: \$369.99**



## RETRO FULL FACE HELMET, WHITE

AVAILABLE FOR DELIVERY NOW

### FEATURES

Glossy, UV lacquer finish  
100% fiberglass outer shell; EPS inner shell  
Fixed inner lining  
Weight: 1450g  
Safety: DOT certified; ECE certified

### ADDITIONAL FEATURES

Anti-fog Pinlock® 30, anti-scratch shield coatings; detachable cheek pads; quick release chin strap; Bluetooth® compatible

**XS-2XL**      **2868683**  
**US: \$269.99**      **CAN: \$349.99**



### LARGE SIZES

## RETRO OPEN FACE HELMET, RED

AVAILABLE FOR DELIVERY NOW

### FEATURES

Glossy UV lacquer finish  
100% fiberglass outer shell; EPS inner shell  
Fixed lining  
Weight: 1150g  
Safety: DOT certified; ECE certified

### ADDITIONAL FEATURES

Detachable sunpeak & cheek pads; D ring closure; goggle fastener at back; Bluetooth® compatible; Chrome piping

**XS-4XL**      **2868872**  
**US: \$139.99**      **CAN: \$179.99**





SEMI PRO SUNGLASSES  
PAGE 73

**LARGE SIZES**

**RETRO OPEN FACE HELMET, BLACK**

AVAILABLE FOR DELIVERY NOW

**FEATURES**

Glossy UV lacquer finish  
100% fiberglass outer shell; EPS inner shell  
Fixed lining  
Weight: 1150g  
Safety: DOT certified; ECE certified

**ADDITIONAL FEATURES**

Detachable sunpeak & cheek pads;  
D-ring closure; goggle fastener at back;  
Bluetooth® compatible; Chrome piping

**XS-4XL**                      **2868870**  
**US: \$139.99**                **CAN: \$179.99**



**LARGE SIZES**

**RETRO OPEN FACE HELMET, MATTE BLACK**

AVAILABLE FOR DELIVERY NOW

**FEATURES**

Matte UV lacquer finish  
100% fiberglass outer shell; EPS inner shell  
Fixed lining  
Weight: 1150g  
Safety: DOT certified; ECE certified

**ADDITIONAL FEATURES**

Detachable sunpeak & cheek pads; D-ring closure;  
goggle fastener at back; Bluetooth® compatible

**XS-4XL**                      **2868869**  
**US: \$139.99**                **CAN: \$179.99**



**LARGE SIZES**

**RETRO OPEN FACE HELMET, SILVER**

AVAILABLE FOR DELIVERY NOW

**FEATURES**

Glossy UV lacquer finish  
100% fiberglass outer shell; EPS inner shell  
Fixed lining  
Weight: 1150g  
Safety: DOT certified; ECE certified

**ADDITIONAL FEATURES**

Detachable sunpeak & cheek pads;  
D-ring closure; goggle fastener at back;  
Bluetooth® compatible

**XS-4XL**                      **2868871**  
**US: \$139.99**                **CAN: \$179.99**



GETAWAY JACKET  
PAGE 7

GOLD AVIATOR SUNGLASSES  
PAGE 70



**LARGE SIZES**  
**CARBON OPEN FACE HELMET, BLACK**  
AVAILABLE FOR DELIVERY NOW

**FEATURES**  
Matte UV lacquer finish  
100% carbon fiber outer shell; EPS inner shell  
Fixed lining  
Weight: 1050g  
Safety: DOT certified; ECE certified

**ADDITIONAL FEATURES**  
Detachable sunpeak & cheek pads;  
D-ring closure; goggle fastener at back;  
Bluetooth® compatible

**XS-4XL**      **2869633**  
**US: \$249.99**    **CAN: \$324.99**



**LARGE SIZES**  
**OPEN FACE HELMET - STRIPE, WHITE**  
AVAILABLE FOR DELIVERY NOW

**FEATURES**  
Glossy UV lacquer finish  
100% fiberglass outer shell; EPS inner shell  
Fixed lining  
Weight: 1150g  
Safety: DOT certified; ECE certified

**ADDITIONAL FEATURES**  
Detachable sunpeak & cheek pads;  
D-ring closure; goggle fastener at back;  
Bluetooth® compatible

**XS-4XL**      **2869628**  
**US: \$149.99**    **CAN: \$194.99**



**LARGE SIZES**  
**OPEN FACE HELMET - MATTE STRIPE, BLACK**  
AVAILABLE FOR DELIVERY NOW

**FEATURES**  
Matte UV lacquer finish  
100% fiberglass outer shell; EPS inner shell  
Fixed lining  
Weight: 1150g  
Safety: DOT certified; ECE certified

**ADDITIONAL FEATURES**  
Detachable sunpeak & cheek pads;  
D-ring closure; goggle fastener at back;  
Bluetooth® compatible

**XS-4XL**      **2869629**  
**US: \$149.99**    **CAN: \$194.99**



ATLANTA SUNGLASSES  
PAGE 71



ATLANTA SUNGLASSES  
PAGE 71



LARGE SIZES

**TWO TONE OPEN FACE HELMET, SILVER/BLACK**

AVAILABLE FOR DELIVERY NOW

**FEATURES**

Glossy UV lacquer finish  
 100% fiberglass outer shell; EPS inner shell  
 Fixed lining  
 Weight: 1150g  
 Safety: DOT certified; ECE certified

**ADDITIONAL FEATURES**

Detachable sunpeak & cheek pads;  
 D-ring closure; goggle fastener at back;  
 Bluetooth® compatible; Chrome piping

**XS-4XL**                      **2868897**  
**US: \$149.99**                **CAN: \$194.99**



FINAL SEASON

LARGE SIZES

**SCOUT® OPEN FACE HELMET, BLUE/WHITE**

AVAILABLE FOR DELIVERY NOW. FINAL SEASON

**FEATURES**

Glossy UV lacquer finish  
 100% fiberglass outer shell; EPS inner shell  
 Fixed lining  
 Weight: 1150g  
 Safety: DOT certified; ECE certified

**ADDITIONAL FEATURES**

Detachable sunpeak & cheek pads;  
 D-ring closure; goggle fastener at back;  
 Bluetooth® compatible; Chrome piping

**XS-4XL**                      **2868895**  
**US: \$149.99**                **CAN: \$194.99**



LARGE SIZES

**RETRO OPEN FACE HELMET, WHITE**

AVAILABLE FOR DELIVERY NOW

**FEATURES**

Glossy UV lacquer finish  
 100% fiberglass outer shell; EPS inner shell  
 Fixed lining  
 Weight: 1150g  
 Safety: DOT certified; ECE certified

**ADDITIONAL FEATURES**

Detachable sunpeak & cheek pads;  
 D-ring closure; goggle fastener at back;  
 Bluetooth® compatible

**XS-4XL**                      **2868684**  
**US: \$149.99**                **CAN: \$194.99**



**RETRO OPEN FACE HELMET BUBBLE VISOR**

AVAILABLE FOR DELIVERY NOW

Only works with the following open face helmets: 2868684, 2868869, 2868870, 2868871, 2868872, 2868897, 2868895, 2869628, 2869633 & 2869629.

**ONE SIZE**

<b>A. CLEAR</b>	<b>2868873</b>
<b>B. GRAY</b>	<b>2868874</b>
<b>C. REFLECTIVE SILVER</b>	<b>2868875</b>
<b>D. ORANGE</b>	<b>2868876</b>
<b>E. RED</b>	<b>2868877</b>
<b>US: \$19.99</b>	<b>CAN: \$26.99</b>



**RETRO OPEN FACE HELMET SUN PEAK**

AVAILABLE FOR DELIVERY NOW

Only works with the following open face helmets: 2868684, 2868869, 2868870, 2868871, 2868872, 2868897, 2868895, 2869628, 2869633 & 2869629.

**ONE SIZE**

**US: \$9.99**                      **2868830**  
**CAN: \$14.99**

**PINLOCK® 30 FOG RESISTANT INSERT LENS - CLEAR (NOT PICTURED)**

AVAILABLE FOR DELIVERY NOW

**ONE SIZE**                      **2867462**  
**US: \$24.99**                      **CAN: \$32.99**



SPRINGFIELD MESH 2 JACKET  
PAGE 10



**HALF HELMET VISOR**

AVAILABLE FOR DELIVERY NOW

Only works with the following half helmets: 2863696, 2864367 & 2869634.

**ONE SIZE**  
US: \$19.99

**2866311**  
CAN: \$25.99



**HALF HELMET 1, BLACK**

AVAILABLE FOR DELIVERY NOW

**FEATURES**

Matte ABS outer shell; EPS inner shell  
Fixed inner lining  
Weight: 980g  
Safety: DOT certified

**ADDITIONAL FEATURES**

Size adjuster at back; inner sun visor & Bluetooth® compatible

**XS-2XL**  
US: \$79.99

**2863696**  
CAN: \$104.99



**HALF HELMET 2, BLACK**

AVAILABLE FOR DELIVERY NOW

**FEATURES**

Matte ABS outer shell; EPS inner shell  
Fixed inner lining  
Weight: 980g  
Safety: DOT certified

**ADDITIONAL FEATURES**

Size adjuster at back; inner sun visor & Bluetooth® compatible

**XS-2XL**  
US: \$79.99

**2864367**  
CAN: \$104.99



**HALF HELMET 3, BLACK**

AVAILABLE FOR DELIVERY NOW

**FEATURES**

Matte ABS outer shell; EPS inner shell  
Fixed inner lining  
Weight: 980g  
Safety: DOT certified

**ADDITIONAL FEATURES**

Size adjuster at back; inner sun visor & Bluetooth® compatible

**XS-2XL**  
US: \$79.99

**2869634**  
CAN: \$104.99







**FINAL SEASON**

**MEN'S MESH SNEAKER, BLACK**

AVAILABLE FOR DELIVERY NOW. FINAL SEASON

Casual day sneaker. Vibram® sole to provide grip and abrasion resistance. The premium cow leather, antique silver eyelets and breathable mesh panel design make this sneaker a favorite.

**FEATURES**

- 1.4-1.5mm thick durable cow leather
- Gusset tongue keeps out sand & water
- Antibacterial microfiber insock & mesh lining
- Includes black & red waxy shoe laces

**SIZE: 7-13**      **2868685**  
**US: \$119.99**      **CAN: \$155.99**



**MEN'S SOCKS 2 PACK**

AVAILABLE FOR DELIVERY NOW

Multi pack of branded Indian Motorcycle® socks. Each pack includes two pairs with different graphics. Socks have script logo and contrast stripes.

**ONE SIZE (US 7-13)**      **2869777**  
**US: \$24.99**      **CAN: \$34.99**



**FINAL SEASON**

**MEN'S SNEAKER, BLACK**

AVAILABLE FOR DELIVERY NOW. FINAL SEASON

This sneaker provides a stable fit and protection. The Vibram® sole provides grip and abrasion resistance. The premium cow leather, antique silver eyelets and pinstripe design make this sneaker a favorite for riding and around town.

**FEATURES**

- 1.4-1.5mm thick durable cow leather
- Gusset tongue keeps out sand & water
- Antibacterial microfiber insock & mesh lining
- Ankle protector, toe cap & heel cup
- Gear shift pad
- Includes black & red waxy shoe laces
- CE certified. Personal Protective Equipment Regulation 2016/425; EN 13634:2017

**SIZE: 7-13**      **2867689**  
**US: \$129.99**      **CAN: \$169.99**



**MEN'S SOCKS 3 PACK**

AVAILABLE FOR DELIVERY NOW

Multi pack of branded Indian Motorcycle® socks. Each pack includes three colors; black, gray and navy.

**ONE SIZE (US 7-13)**      **2868691**  
**US: \$24.99**      **CAN: \$34.99**



**MEN'S CLASSIC MOC, BROWN**

AVAILABLE FOR DELIVERY NOW

This 8-inch lifestyle moccasin boot is developed to provide a stable fit and protection with an ecru Vibram® sole. The premium cow leather, antique brass eyelets and all brown stitching make these boots a favorite for riding and being seen around town.

**FEATURES**

- 1.4-1.5mm thick durable cow leather
- Gusset tongue & zipper keep out sand & water
- Antibacterial microfiber insock & mesh lining
- Ankle protector, toe cap & heel cup
- Gear shift pad
- Includes brown & ecru waxy shoe laces
- CE certified. Personal Protective Equipment Regulation 2016/425; EN 13634:2017

**SIZE: 7-13**      **2867691**  
**US: \$199.99**      **CAN: \$259.99**



**NEED A REPAIR?**

NuShoe® is the official cobbler for all Vibram® sole replacements.

[www.nushoe.com/indian-boot-repair](http://www.nushoe.com/indian-boot-repair)  
 Toll free number: 1-877-687-4631



## MEN'S ENGINEER, BLACK

AVAILABLE FOR DELIVERY NOW. FINAL SEASON

This 7.5-inch boot is an iconic short Engineer style with burnish suede back panel. It features an internal YKK® zipper for easy pull-on and a Vibram® sole to provide grip and abrasion resistance. The premium cow leather, original Indian Motorcycle® buckles and all black stitching will have you riding in style.



### FEATURES

1.4-1.5mm thick durable cow leather  
Strap & elastic gusset to adjust the fitting  
Antibacterial microfiber insock & mesh lining  
Ankle protector, toe cap & heel cup  
Gusset zipper keeps out sand & water  
CE certified. Personal Protective Equipment  
Regulation 2016/425; EN 13634:2017

**SIZE: 7-13**      **2867690**  
**US: \$199.99**      **CAN: \$259.99**



## MEN'S CLASSIC LACE UP, BLACK

AVAILABLE FOR DELIVERY NOW

This 8-inch classic lace up boot is developed to provide a stable fit and protection, it has a Vibram® sole to provide grip and abrasion resistance. The premium cow leather, antique silver eyelets and all black stitching make these boots a favorite for riding and being seen around town.



### FEATURES

1.4-1.5mm thick durable cow leather  
Gusset tongue keeps out sand & water  
Antibacterial microfiber insock & mesh lining  
Ankle protector, toe cap & heel cup  
Certified slip resistance outsole  
Internal YKK® zipper for easy pull-on  
Includes black & mix combo colored waxy shoe laces  
CE certified. Personal Protective Equipment  
Regulation 2016/425; EN 13634:2017

**SIZE: 7-13**      **2867688**  
**US: \$199.99**      **CAN: \$259.99**



## WOMEN'S SHORT ENGINEER, BLACK

AVAILABLE FOR DELIVERY NOW

This 8-inch boot is a professional short Engineer style with burnish suede back panel. It features an internal YKK® zipper for easy pull-on. The premium cow leather, original Indian Motorcycle® buckles, embossed logo and all black stitching will have you riding in style.



### FEATURES

1.4-1.5mm thick durable cow leather  
Strap & elastic gusset to adjust the fitting  
Antibacterial microfiber insock & mesh lining  
Ankle protector, toe cap & heel cup  
Gear shift pad  
Gusset zipper keeps out sand & water  
CE certified. Personal Protective Equipment  
Regulation 2016/425; EN 13634:2017

**SIZE: 5-11**      **2867692**  
**US: \$189.99**      **CAN: \$249.99**



**FINAL SEASON**

## WOMEN'S TALL ENGINEER, BROWN

AVAILABLE FOR DELIVERY NOW. FINAL SEASON

This 13-inch boot is a casual tall Engineer style with burnish suede back panel. It features an internal YKK® zipper an easy opening, with heeled wooden sole and an elastic gusset to adjust the fitting.

### FEATURES

1.4-1.5mm thick durable cow leather  
Strap & elastic gusset to adjust the fitting  
Antibacterial microfiber insock & mesh lining  
Gusset zipper keeps out sand & water

**SIZE: 5-11**      **2863964**  
**US: \$249.99**      **CAN: \$324.99**





FINAL SEASON

**MEN'S WORTHINGTON BOOT, BLACK**

AVAILABLE FOR DELIVERY NOW. FINAL SEASON

This boot is based on Red Wing Shoes® classic Engineer style and has been modified for Indian Motorcycle® riders. This 11-inch pull-on boot features plain toe styling, a Vibram® 430 sole to provide higher grip and abrasion resistance and an instep strap to adjust the fitting. The premium Red Wing Shoes® Black Harness leather, original Indian Motorcycle® buckles, embossed logo and all black stitching will have you riding in style. These boots feature Goodyear welt construction and triple stitched quality.



MADE IN  
\*\*\*\*\*  
**U.S.A**  
\*\*\*\*\*

**FEATURES**

- 2.0-2.2mm thick durable Red Wing® work boots leather
- Instep strap to adjust the fitting
- Leather insole
- Traditional Engineer style from 1930s
- Original Indian Motorcycle® logo buckles
- Goodyear welt construction, repairable outsole construction

SIZE: 7-13      2864411  
US: \$319.99    CAN: \$409.99



**MEN'S SPIRIT LAKE BOOT, BROWN**

AVAILABLE FOR DELIVERY NOW

This boot is based on Red Wing Shoes® popular Iron Ranger and has been modified for Indian Motorcycle® riders. It is an 8-inch boot developed to provide a stable fit and ankle protection, has a Vibram® 430 sole to provide higher grip and abrasion resistance and features a double layer leather toe cap for protection. The premium Red Wing Shoes® Amber Portage leather, gunmetal eyelets and all brown stitching make these boots a favorite for riding and being seen around town. These boots feature Goodyear welt construction and triple stitched quality.



MADE IN  
\*\*\*\*\*  
**U.S.A**  
\*\*\*\*\*

**FEATURES**

- 2.0-2.2mm thick durable Red Wing® work boots leather
- Double layer capped toe to protect the toe area
- Gusset tongue to prevent sand or water from getting into the boots
- Leather insole
- Goodyear welt construction, repairable outsole construction

SIZE: 7-13      2864412  
US: \$319.99    CAN: \$409.99



HIGH PROFILE PATCH HAT  
PAGE 77

SILVER AVIATOR SUNGLASSES  
PAGE 70

LEGEND TEE  
PAGE 42



TOUR TEE  
PAGE 41



COPPER STUD TEE  
PAGE 59

AMERICAN ORIGINAL TEE  
PAGE 39



NEW

**BOMBER GIRL TANK, NAVY**

Fabric: 100% cotton marl  
Graphics: Print on front

S-3XL      2860771  
US: \$24.99      CAN: \$32.99



NEW

LARGE SIZES

**BOMBER GIRL TEE, RED**

Fabric: 100% cotton marl  
Graphics: Print on front

S-5XL      2860772  
US: \$34.99      CAN: \$46.99



NEW

LARGE SIZES

**3D LOGO TEE, RED**

Fabric: 100% cotton  
Graphics: Print and embroidery on front

S-5XL      2860775  
US: \$29.99      CAN: \$39.99

LEGENDARY SUNGLASSES  
PAGE 72



**NEW** // LARGE SIZES

HERITAGE

**CRAFTED TEE, GRAY**

Fabric: 100% cotton marl  
Graphics: Print on front

S-5XL      2860774  
US: \$34.99      CAN: \$46.99

**NEW** // LARGE SIZES

HERITAGE

**AMERICAN ORIGINAL TEE, NAVY**

Fabric: 100% cotton  
Graphics: Print on front

S-5XL      2860773  
US: \$34.99      CAN: \$46.99

**NEW** // LARGE SIZES

HERITAGE

**FLAT TRACK RACING TEE, BLACK**

Fabric: 100% polyester  
Graphics: All over sublimation print

S-5XL      2860811  
US: \$59.99      CAN: \$79.99



HERITAGE

## MARL POCKET TEE, PORT

AVAILABLE FOR DELIVERY NOW

Fabric: 100% cotton marl  
Graphics: Print on front and back

S-3XL      2869659  
US: \$39.99      CAN: \$54.99



LARGE SIZES

HERITAGE

## COLOR HEADDRESS TEE, GRAY

AVAILABLE FOR DELIVERY NOW

Fabric: 100% cotton  
Graphics: Print on front

S-5XL      2869660  
US: \$34.99      CAN: \$46.99



HERITAGE

## MARL TEE, RED

AVAILABLE FOR DELIVERY NOW

Fabric: 100% cotton marl  
Graphics: Print on front

S-3XL      2869657  
US: \$39.99      CAN: \$54.99



LARGE SIZES

HERITAGE

## LOGO TEES

AVAILABLE FOR DELIVERY NOW

Fabric: 100% cotton  
Graphics: Print on front

S-5XL  
ANTIQUE WHITE      2867945  
ECRU (BLACK TEE)      2863317  
US: \$29.99      CAN: \$39.99

HERITAGE

## MONTAGE TEE, GRAY

AVAILABLE FOR DELIVERY NOW

Fabric: 100% cotton marl  
Graphics: Print on front and back

S-3XL      2869733  
US: \$39.99      CAN: \$54.99







**NEW**

**TOUR TEE, GRAY**

Fabric: 100% cotton loopback  
Graphics: Print on front and back

**S-3XL**                      **2860780**  
**US: \$34.99**                **CAN: \$46.99**

**ROGUE**



**LARGE SIZES**

**ICON LOGO TEE, WHITE**

AVAILABLE FOR DELIVERY NOW

Fabric: 100% cotton  
Graphics: Print on front

**S-5XL**                      **2869661**  
**US: \$34.99**                **CAN: \$46.99**

**ROGUE**



**QUICK DRY LOGO TEE, GRAY**

AVAILABLE FOR DELIVERY NOW

This tee offers UV protection SPF50, quick dry and high wicking properties.

Fabric: 100% polyester  
Graphics: Print on front

**S-3XL**                      **2869665**  
**US: \$49.99**                **CAN: \$67.99**

**ROGUE**



**FINAL SEASON**

**WRECKING CREW TEE, GRAY**

AVAILABLE FOR DELIVERY NOW. FINAL SEASON

Fabric: 100% cotton  
Graphics: Print on front, back and sleeves

**S-3XL**                      **2869743**  
**US: \$39.99**                **CAN: \$54.99**

**ROGUE**



**FTR BIKE SKETCH TEE, BLACK**

AVAILABLE FOR DELIVERY NOW

Fabric: 100% cotton  
Graphics: Print on front  
Fit: Fashion

**S-3XL**                      **2869731**  
**US: \$34.99**                **CAN: \$46.99**

**MOTO**



ATLANTA SUNGLASSES  
PAGE 71



HIGH PROFILE PATCH HAT  
PAGE 77



NEW

MOTOCROSS TEE, WHITE

Fabric: 60% cotton, 40% polyester slub  
Graphics: Print and embroidery on front  
Fit: Fashion

S-3XL      2860807  
US: \$34.99      CAN: \$46.99



NEW

LEGEND TEE, BLUE

Fabric: 100% cotton marl  
Graphics: Print on front  
Fit: Fashion

S-3XL      2860792  
US: \$29.99      CAN: \$39.99



NEW

RETRO TEE, WHITE

Fabric: 60% cotton, 40% polyester slub  
Graphics: Print on front  
Fit: Fashion

S-3XL      2860787  
US: \$29.99      CAN: \$39.99



GOLD AVIATOR SUNGLASSES  
PAGE 70



**NEW**

**BIKE TEE, GRAY**

Fabric: 100% cotton marl  
Graphics: Print on front  
Fit: Fashion

S-3XL      2860789  
US: \$34.99      CAN: \$46.99



**NEW**

**GRAPHIC TEE, GRAY**

Fabric: 100% cotton marl  
Graphics: Print on front  
Fit: Fashion

S-3XL      2860790  
US: \$34.99      CAN: \$46.99



**MOTO**

**SHIELD CAMO TEE, BLACK**

AVAILABLE FOR DELIVERY NOW

Fabric: 100% cotton  
Graphics: Print on front

S-3XL      2869684  
US: \$39.99      CAN: \$54.99



**NEW**

### HEADRESS ICON TEE, WHITE

Fabric: 60% cotton, 40% polyester slub  
 Graphics: Print on front  
 Fit: Fashion

**S-3XL**                      **2860791**  
**US: \$29.99**                **CAN: \$39.99**



### FTR FRONT TEE, WHITE

AVAILABLE FOR DELIVERY NOW

Fabric: 100% cotton  
 Graphics: Print on front  
 Fit: Fashion

**S-3XL**                      **2869732**  
**US: \$34.99**                **CAN: \$46.99**



### HAND PAINTED TEE

AVAILABLE FOR DELIVERY NOW

Fabric: 100% cotton  
 Graphics: Print on front  
 Fit: Fashion

**S-3XL**  
**RED** FINAL SEASON                **2869685**  
**NAVY**                                      **2869682**  
**US: \$34.99**                                **CAN: \$46.99**



### ADVENTURE TEE, GRAY

AVAILABLE FOR DELIVERY NOW

Fabric: 100% cotton  
 Graphics: Print on front  
 Fit: Fashion

**S-3XL**                      **2869688**  
**US: \$34.99**                **CAN: \$46.99**



### FTR™ 1200 LOGO TEE

AVAILABLE FOR DELIVERY NOW

Fabric: 100% cotton  
 Graphics: Print on front  
 Fit: Fashion

**S-3XL**  
**BLACK**                                      **2868965**  
**ECRU**                                        **2868966**  
**US: \$34.99**                                **CAN: \$46.99**



### SHIELD 1200 TEE, BLACK

AVAILABLE FOR DELIVERY NOW

Fabric: 100% cotton  
 Graphics: Print on front  
 Fit: Fashion

**S-3XL**                      **2869690**  
**US: \$34.99**                **CAN: \$46.99**



**1901 BONNEVILLE TEE, WHITE**

AVAILABLE FOR DELIVERY NOW

Fabric: 100% cotton  
 Graphics: Print on front  
 Fit: Fashion

**S-3XL**      **2869746**  
 US: \$39.99    CAN: \$54.99



**1901 SALT FLATS TEE, RED**

AVAILABLE FOR DELIVERY NOW

Fabric: 100% cotton  
 Graphics: Print on front  
 Fit: Fashion

**S-3XL**      **2869747**  
 US: \$39.99    CAN: \$54.99



**1901 MUNRO TEE, GRAY**

AVAILABLE FOR DELIVERY NOW

Fabric: 100% cotton  
 Graphics: Print on front  
 Fit: Fashion

**S-3XL**      **2869748**  
 US: \$39.99    CAN: \$54.99



**1901 MUNRO SPECIAL TEE, GRAY**

AVAILABLE FOR DELIVERY NOW

Fabric: 100% cotton marl  
 Graphics: Print on front  
 Fit: Fashion

**S-3XL**      **2869749**  
 US: \$39.99    CAN: \$54.99



SILVER AVIATOR SUNGLASSES  
 PAGE 70



**NEW**

## HERITAGE POCKET TEE, RED

Fabric: 60% cotton, 40% polyester marl waffle  
Graphics: Print on front and back

**S-3XL**                      **2860777**  
**US: \$49.99**                **CAN: \$67.99**



## UV PROTECT HEADDRESS TEE, GRAY

AVAILABLE FOR DELIVERY NOW

This tee uses a bamboo charcoal coating to offer UV protection SPF50, along with thermal control, dry fast and high wicking properties.

Fabric: 100% polyester  
Graphics: Print on front

**S-3XL**                      **2868924**  
**US: \$49.99**                **CAN: \$67.99**



**LARGE SIZES**

## LONG SLEEVE LOGO TEE, NAVY

AVAILABLE FOR DELIVERY NOW

Fabric: 100% cotton  
Graphics: Print on front

**S-5XL**                      **2869662**  
**US: \$44.99**                **CAN: \$59.99**



**NEW**

## PRINTED SLEEVE TEE, BLACK

Fabric: 100% cotton  
Graphics: Print on front, back and sleeve

**S-3XL**                      **2860781**  
**US: \$44.99**                **CAN: \$59.99**



**NEW**

**ROGUE**

**WAFFLE PIQUET TEE, GRAY**

Fabric: 60% cotton, 40% polyester marl  
Graphics: Print on front and back

**S-3XL**                      **2860782**  
**US: \$49.99**                **CAN: \$67.99**



**ROGUE**

**CHARCOAL MARL TEE, GRAY**

AVAILABLE FOR DELIVERY NOW

Fabric: 100% cotton marl  
Graphics: Print on front

**S-3XL**                      **2869664**  
**US: \$44.99**                **CAN: \$59.99**



**ROGUE**

**LONG SLEEVE HEADDRESS TEE, BLACK**

AVAILABLE FOR DELIVERY NOW

Fabric: 100% cotton slub  
Graphics: Print on front

**S-3XL**                      **2868808**  
**US: \$44.99**                **CAN: \$59.99**



**FINAL SEASON**

**ROGUE**

**LONG SLEEVE WRECKING CREW TEE, GRAY**

AVAILABLE FOR DELIVERY NOW. FINAL SEASON

Fabric: 100% cotton  
Graphics: Print on front and sleeves

**S-3XL**                      **2869744**  
**US: \$44.99**                **CAN: \$59.99**



**NEW**

**MOTO**

**LONG SLEEVE MOTOCROSS TEE, RED**

Fabric: 60% cotton, 40% polyester slub  
Graphics: Print and embroidery on front

**S-3XL**                      **2860786**  
**US: \$44.99**                **CAN: \$59.99**



**MOTO**

**LONG SLEEVE SHIELD LOGO TEE, RED**

AVAILABLE FOR DELIVERY NOW

Fabric: 100% cotton  
Graphics: Print on chest and sleeve  
Fit: Fashion

**S-3XL**                      **2869706**  
**US: \$49.99**                **CAN: \$59.99**



**NEW**

**HERITAGE 3D LOGO SWEAT, NAVY**

Fabric: 70% cotton, 30% polyester loopback  
Graphics: Print and embroidery on front

**S-3XL**      **2860776**  
**US: \$79.99**      **CAN: \$104.99**



**HERITAGE BLOCK LOGO SWEAT, RED**

AVAILABLE FOR DELIVERY NOW

Fabric: 70% cotton, 30% polyester marl loopback  
Graphics: Embroidery on front

**S-3XL**      **2869667**  
**US: \$79.99**      **CAN: \$104.99**



**HERITAGE CHARCOAL LOGO SWEAT, GRAY**

AVAILABLE FOR DELIVERY NOW

Fabric: 70% cotton, 30% polyester marl loopback  
Graphics: Embroidery on front

**S-3XL**      **2869790**  
**US: \$79.99**      **CAN: \$104.99**



**HERITAGE IMC HOODIE, BLACK**

AVAILABLE FOR DELIVERY NOW

Fabric: 70% cotton, 30% polyester brushback  
Graphics: Embroidery on front and back

**S-3XL**      **2863697**  
**US: \$79.99**      **CAN: \$104.99**



**HERITAGE LOGO HOODIE, GRAY**

AVAILABLE FOR DELIVERY NOW

Fabric: 70% cotton, 30% polyester marl brushback  
Graphics: Embroidery on front and back

**S-3XL**      **2869734**  
**US: \$89.99**      **CAN: \$119.99**



**HERITAGE ICON HOODIE, GRAY**

AVAILABLE FOR DELIVERY NOW

Fabric: 70% cotton, 30% polyester marl loopback  
Graphics: Print on front and back

**S-3XL**      **2869666**  
**US: \$89.99**      **CAN: \$119.99**





HERITAGE

**BLOCK LOGO KNIT, BLUE**

AVAILABLE FOR DELIVERY NOW

Fabric: 100% cotton  
Graphics: Knit on front

S-3XL      2869668  
US: \$89.99      CAN: \$119.99



NEW

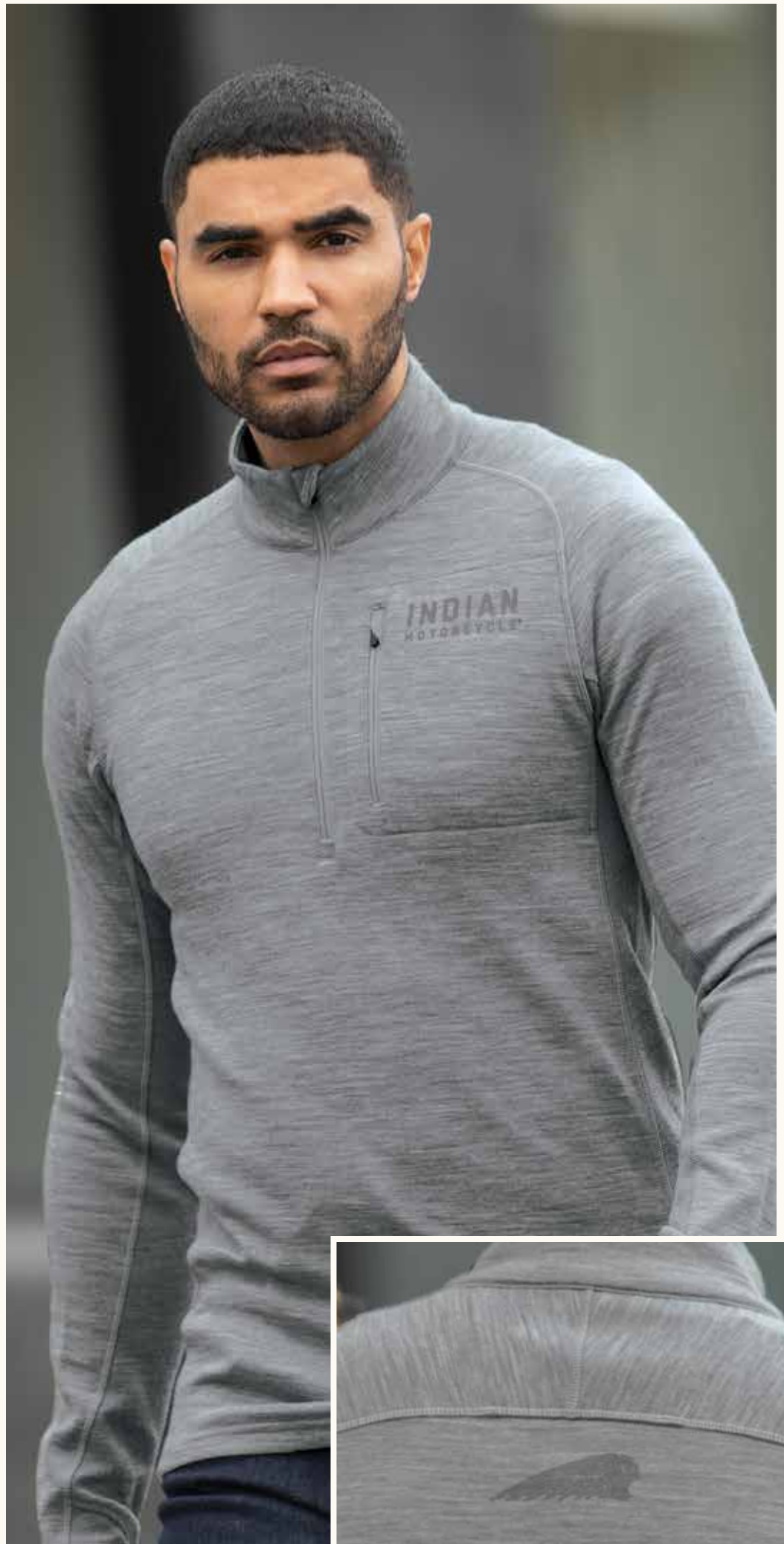
ROGUE

**MERINO HALF ZIP, GRAY**

Keeps you warm in the cold and cool in the heat. Fit and features provide ultimate comfort. Breathes to prevent overheating. Non itchy and naturally odor resistant. Machine washable and dries fast.

Fabric: 95% Merino wool, 5% nylon  
Graphics: Print on front

S-3XL      2869736  
US: \$149.99      CAN: \$194.99





LANA DENIM JACKET  
PAGE 20



**NEW** // LARGE SIZES

**ROGUE** TONAL HOODIE, GRAY

Fabric: 55% cotton, 45% polyester marl loopback  
Graphics: Print on front and sleeve

S-5XL      2860783  
US: \$59.99      CAN: \$79.99



**NEW**

**MOTO** HEADDRESS HOODIE, BLUE

Fabric: 55% cotton, 45% polyester marl loopback  
Graphics: Print on front and back

S-3XL      2860788  
US: \$59.99      CAN: \$79.99



**ROGUE** CHECKERED HOODIE, BLACK

AVAILABLE FOR DELIVERY NOW

Fabric: 100% cotton loopback  
Graphics: Printed hood lining, embroidery on back

S-3XL      2868971  
US: \$89.99      CAN: \$119.99

HIGH PROFILE DENIM HAT  
PAGE 77

ATLANTA SUNGLASSES  
PAGE 71



LARGE SIZES

**HERITAGE** COLOR BLOCK ZIP THRU, BLUE

AVAILABLE FOR DELIVERY NOW

Fabric: 70% cotton, 30% polyester brushback  
Graphics: Print on front and back

S-5XL      2869735  
US: \$89.99      CAN: \$119.99

FINAL SEASON

**ROGUE** WRECKING CREW STRIPE SWEAT, GRAY

AVAILABLE FOR DELIVERY NOW. FINAL SEASON

Fabric: 100% cotton loopback  
Graphics: Print on front, back and sleeves

S-3XL      2869745  
US: \$79.99      CAN: \$104.99

FINAL SEASON

**HERITAGE** ICON QTR ZIP FLEECE, BLACK

AVAILABLE FOR DELIVERY NOW. FINAL SEASON

Fabric: 100% polyester fleece  
Graphics: Embroidery on front and back

S-3XL      2868928  
US: \$79.99      CAN: \$104.99



**NEW**

## BOMBER GIRL SHIRT, PORT

Fabric: 100% cotton  
Graphics: Embroidery on front, print on back

**S-3XL**                      **2860779**  
**US: \$64.99**                **CAN: \$84.99**



## PLAID SHIRT, RED

AVAILABLE FOR DELIVERY NOW

Fabric: 100% cotton  
Graphics: Embroidery on front and back

**S-3XL**                      **2868821**  
**US: \$64.99**                **CAN: \$84.99**



**LARGE SIZES**

## CASUAL SHIRT, BLACK

AVAILABLE FOR DELIVERY NOW

Fabric: 65% polyester, 35% cotton  
Graphics: Embroidery on front and back

**S-5XL**                      **2863698**  
**US: \$59.99**                **CAN: \$79.99**



**LARGE SIZES**

## SHOP SHIRT, BLACK

AVAILABLE FOR DELIVERY NOW

Fabric: 65% polyester, 35% cotton  
Graphics: Print on front and back

**S-5XL**                      **2869740**  
**US: \$64.99**                **CAN: \$84.99**



**FINAL SEASON**

## SHOP SHIRT, ANTIQUE WHITE

AVAILABLE FOR DELIVERY NOW. FINAL SEASON

Fabric: 100% cotton  
Graphics: Embroidery on front, print on back

**S-3XL**                      **2867953**  
**US: \$59.99**                **CAN: \$79.99**

PERFORMANCE HAT  
PAGE 74



LARGE SIZES

**SLEEVELESS DENIM SHIRT, GRAY**

AVAILABLE FOR DELIVERY NOW

Fabric: 100% cotton  
Graphics: Embroidery on front, print on back

**S-5XL**      **2869737**  
**US: \$69.99**    **CAN: \$89.99**



**WASHED DENIM SHIRT, GRAY**

AVAILABLE FOR DELIVERY NOW

Fabric: 100% cotton  
Graphics: Embroidery on front, print on back

**S-3XL**      **2869738**  
**US: \$79.99**    **CAN: \$104.99**



FINAL SEASON

**WASHED TWILL SHIRT, GRAY**

AVAILABLE FOR DELIVERY NOW. FINAL SEASON

Fabric: 100% cotton

**S-3XL**      **2868930**  
**US: \$69.99**    **CAN: \$89.99**



NEW

HERITAGE

PLAID SHIRT, NAVY

Fabric: 100% cotton

S-3XL  
US: \$69.99

2860778  
CAN: \$89.99

HERITAGE

PLAID SHIRT, BLACK

AVAILABLE FOR DELIVERY NOW

Fabric: 100% cotton  
Graphics: Embroidery on back

S-3XL  
US: \$69.99

2868933  
CAN: \$89.99

NEW

ROGUE

BUFFALO PLAID SHIRT, RED

Fabric: 100% cotton  
Graphics: Embroidery on front

S-3XL  
US: \$69.99

2860785  
CAN: \$89.99

ENTRY SUNGLASSES  
PAGE 72



**NEW**

**BUFFALO PLAID SHIRT, GRAY**

Fabric: 100% cotton  
Graphics: Embroidery on front

**S-3XL**                      **2860784**  
**US: \$69.99**                **CAN: \$89.99**

**ROGUE**

**FINAL SEASON**

**PLAID SHIRT, GRAY**

AVAILABLE FOR DELIVERY NOW. FINAL SEASON

Fabric: 100% cotton  
Graphics: Embroidery on front

**S-3XL**                      **2868932**  
**US: \$69.99**                **CAN: \$89.99**

**ROGUE**



**NEW**

**T-BACK CAMI, BLACK**

Fabric: 95% cotton, 5% elastane  
Graphics: Print on front and back  
Fit: Close

XS-3XL  
US: \$24.99

2860797  
CAN: \$32.99



**HERITAGE**

**QUICK DRY TANK, GRAY**

AVAILABLE FOR DELIVERY NOW

This tank offers UV protection SPF50, quick dry and high wicking properties.

Fabric: 100% polyester  
Graphics: Print on front  
Fit: Relaxed

XS-3XL  
US: \$44.99

2869679  
CAN: \$59.99



**NEW**

**LOGO TANK, BLACK**

Fabric: 95% cotton, 5% elastane  
Graphics: Print on back  
Fit: Close

XS-3XL  
US: \$29.99

2860798  
CAN: \$39.99





**NEW**

**HERITAGE** EMBELLISHED TANK, WHITE

Fabric: 95% cotton, 5% elastane  
Graphics: Embellished and printed on front  
Fit: Close

XS-3XL      2860793  
US: \$34.99      CAN: \$46.99



**FINAL SEASON**

**HERITAGE** SIDE LACE TANK, WHITE

AVAILABLE FOR DELIVERY NOW. FINAL SEASON

Fabric: 50% cotton, 50% modal  
Graphics: Print on front  
Fit: Relaxed

XS-3XL      2869678  
US: \$39.99      CAN: \$54.99



**NEW**

**MOTO** HEADDRESS ICON TANK, WHITE

Fabric: 60% cotton, 40% polyester slub  
Graphics: Print on front  
Fit: Relaxed

XS-3XL      2860804  
US: \$29.99      CAN: \$39.99



MOTO

### RIBBED TANK, BLUE

AVAILABLE FOR DELIVERY NOW

Fabric: 62% polyester, 33% rayon, 5% elastane  
 Graphics: Print on front  
 Fit: Close

**XS-3XL**      **2869758**  
**US: \$29.99**    **CAN: \$39.99**



MOTO

### TIE TANK, GRAY

AVAILABLE FOR DELIVERY NOW

Fabric: 95% cotton, 5% elastane  
 Graphics: Holographic print on front  
 Fit: Relaxed

**XS-3XL**      **2869759**  
**US: \$34.99**    **CAN: \$46.99**



MOTO

### FINAL SEASON OPEN BACK TANK, GRAY

AVAILABLE FOR DELIVERY NOW. FINAL SEASON

This tank features a split at the centre back, low enough to provide modesty.

Fabric: 65% polyester, 35% viscose slub  
 Graphics: High density print on front  
 Fit: Relaxed

**XS-3XL**      **2869677**  
**US: \$34.99**    **CAN: \$46.99**



HERITAGE

### FINAL SEASON HEADDRESS TANK, PORT

AVAILABLE FOR DELIVERY NOW. FINAL SEASON

Fabric: 50% cotton, 46% modal, 4% spandex  
 Graphics: Print on front  
 Fit: Close

**XS-3XL**      **2868939**  
**US: \$29.99**    **CAN: \$39.99**



ROGUE

### FINAL SEASON SNOW WASH TANK, GRAY

AVAILABLE FOR DELIVERY NOW. FINAL SEASON

Fabric: 100% cotton  
 Graphics: Clitter print on front  
 Fit: Relaxed

**XS-3XL**      **2868938**  
**US: \$29.99**    **CAN: \$39.99**



**NEW**

**LOGO TEE, BLACK**

**HERITAGE**

Fabric: 95% cotton, 5% elastane  
Graphics: Print on front and back  
Fit: Close

**XS-3XL**      **2860799**  
**US: \$29.99**    **CAN: \$39.99**



**NEW**

**EMBELLISHED TEE, BLACK**

**HERITAGE**

Fabric: 95% cotton, 5% elastane  
Graphics: Embellished and printed on front  
Fit: Close

**XS-3XL**      **2860794**  
**US: \$39.99**    **CAN: \$54.99**



**NEW**

**COPPER STUD TEE, RED**

**HERITAGE**

Fabric: 50% cotton, 50% modal  
Graphics: Studs and embroidery on front  
Fit: Relaxed

**XS-3XL**      **2860795**  
**US: \$39.99**    **CAN: \$54.99**



**HERITAGE** SPARKLE TEE, PORT

AVAILABLE FOR DELIVERY NOW

Fabric: 65% polyester, 35% rayon  
Graphics: Glitter print on front  
Fit: Relaxed

**XS-3XL**      **2869671**  
**US: \$29.99**    **CAN: \$39.99**



**HERITAGE** ECRU LOGO V-NECK TEE, BLACK

AVAILABLE FOR DELIVERY NOW

Fabric: 95% cotton, 5% elastane  
Graphics: Print on front  
Fit: Close

**XS-3XL**      **2863325**  
**US: \$29.99**    **CAN: \$39.99**



**HERITAGE** STARLIGHT TEE, BLACK

AVAILABLE FOR DELIVERY NOW

Fabric: 50% cotton, 50% modal  
Graphics: Print and diamante on front  
Fit: Relaxed

**XS-3XL**      **2869751**  
**US: \$39.99**    **CAN: \$54.99**



**FINAL SEASON**  
**ROGUE** WRECKING CREW TEE, GRAY

AVAILABLE FOR DELIVERY NOW. FINAL SEASON

Fabric: 100% cotton  
Graphics: Print on front and back  
Fit: Relaxed

**XS-3XL**      **2869755**  
**US: \$39.99**    **CAN: \$54.99**



**FINAL SEASON**  
**HERITAGE** IMC MARL TEE, GRAY

AVAILABLE FOR DELIVERY NOW. FINAL SEASON

Lace ties at side seams.

Fabric: 50% cotton, 50% modal marl  
Graphics: Print on front  
Fit: Relaxed

**XS-3XL**      **2869669**  
**US: \$44.99**    **CAN: \$59.99**



**NEW**

**ROCK TEE, BLACK**

MOTO

Fabric: 100% cotton  
 Graphics: Print on front  
 Fit: Relaxed

XS-3XL      2860803  
 US: \$34.99      CAN: \$46.99



**NEW**

**MOTOCROSS TEE, RED**

MOTO

Fabric: 60% cotton, 40% polyester slub  
 Graphics: Print and embellished front  
 Fit: Relaxed

XS-3XL      2860801  
 US: \$34.99      CAN: \$46.99



**GRADIENT LOGO TEE, BLACK**

MOTO

AVAILABLE FOR DELIVERY NOW

Fabric: 50% modal, 50% cotton  
 Graphics: Print on front  
 Fit: Relaxed

XS-3XL      2869709  
 US: \$34.99      CAN: \$46.99

DIAMANTE CAP  
PAGE 77

GOLD AVIATOR SUNGLASSES  
PAGE 70



MOTO

### WOMEN'S FTR™ 1200 LOGO TEE

AVAILABLE FOR DELIVERY NOW

Fabric: 100% cotton  
Graphics: Print on front and back  
Fit: Relaxed

<b>XS-3XL</b>	
<b>ECRU</b>	<b>2868973</b>
<b>BLACK</b>	<b>2868972</b>
<b>US: \$29.99</b>	<b>CAN: \$39.99</b>

MOTO

### CONTRAST ICON TEE, RED

AVAILABLE FOR DELIVERY NOW

Fabric: 100% cotton marl  
Graphics: Print on front, back and sleeves  
Fit: Relaxed

<b>XS-3XL</b>	<b>2868940</b>
<b>US: \$34.99</b>	<b>CAN: \$46.99</b>



MOTO

### STRIPE SLEEVE TEE, GRAY

AVAILABLE FOR DELIVERY NOW. FINAL SEASON

Fabric: 100% cotton  
Graphics: Print on front and sleeves  
Fit: Relaxed

<b>XS-3XL</b>	<b>2869673</b>
<b>US: \$44.99</b>	<b>CAN: \$59.99</b>

MOTO

### OPEN BACK ICON TEE, GRAY

AVAILABLE FOR DELIVERY NOW. FINAL SEASON

Fabric: 100% viscose  
Graphics: Print on front  
Fit: Relaxed

<b>XS-3XL</b>	<b>2869670</b>
<b>US: \$29.99</b>	<b>CAN: \$39.99</b>



**MOTO** **RUCHED SHOULDER TEE, BLUE**  
 AVAILABLE FOR DELIVERY NOW  
 Fabric: 100% cotton slub  
 Graphics: Print on front, diamante and print on back  
 Fit: Relaxed

**XS-3XL**      **2869750**  
**US: \$39.99**    **CAN: \$54.99**



**FINAL SEASON**  
**MOTO** **IMC BIKE RAGLAN TEE, WHITE**  
 AVAILABLE FOR DELIVERY NOW. FINAL SEASON  
 Fabric: 100% cotton  
 Graphics: Print on front and back  
 Fit: Relaxed

**XS-3XL**      **2868941**  
**US: \$34.99**    **CAN: \$46.99**



**NEW**  
**HERITAGE** **LONG SLEEVE COPPER STUD TEE, TEAL**  
 Fabric: 95% cotton, 5% elastane  
 Graphics: Studs and embroidery on front  
 Fit: Close

**XS-3XL**      **2860796**  
**US: \$44.99**    **CAN: \$59.99**



**HERITAGE** **LOGO STUD TEE, RED**  
 AVAILABLE FOR DELIVERY NOW  
 Indian Motorcycle® logo made entirely from diamantes.

Fabric: 95% cotton, 5% elastane  
 Graphics: Diamante studs on front  
 Fit: Close

**XS-3XL**      **2869753**  
**US: \$44.99**    **CAN: \$59.99**



**HERITAGE** **DIAMANTE TEE, GRAY**  
 AVAILABLE FOR DELIVERY NOW  
 This tee has a jersey front and a loose woven back. Indian Motorcycle® logo made entirely from diamantes.

Fabric: Front- 100% cotton, Back- 100% polyester  
 Graphics: Diamante studs on front  
 Fit: Relaxed

**XS-3XL**      **2869674**  
**US: \$49.99**    **CAN: \$67.99**



**FINAL SEASON**  
**ROGUE** **LONG SLEEVE WRECKING CREW TEE, WHITE**  
 AVAILABLE FOR DELIVERY NOW. FINAL SEASON  
 Fabric: 100% cotton  
 Graphics: Print on front and back  
 Fit: Relaxed

**XS-3XL**      **2869756**  
**US: \$44.99**    **CAN: \$59.99**



**NEW**

**SLEEVELESS HOODIE, CREAM**

Fabric: 100% cotton marl loopback  
Graphics: Print on front and back

MOTO

XS-3XL  
US: \$64.99

2860805  
CAN: \$84.99



**NEW**

**HEADDRESS HOODIE, BLACK**

Fabric: 55% cotton, 45% polyester brushback  
Graphics: Print on front and back

ROGUE

XS-3XL  
US: \$59.99

2860800  
CAN: \$79.99





**NEW**

**HERITAGE**

**PLAID SHIRT, PORT**

This shirt has sleeve tab fastenings so you can wear the sleeves rolled up or down.

Fabric: 100% cotton

Graphics: Embroidery on front and back

**XS-3XL**      **2860806**  
**US: \$69.99**    **CAN: \$89.99**



**HERITAGE**

**SHOP SHIRT, BLACK**

AVAILABLE FOR DELIVERY NOW

Fabric: 65% polyester; 35% cotton

Graphics: Print on front and back

**XS-3XL**      **2869757**  
**US: \$59.99**    **CAN: \$79.99**



**HERITAGE**

**COLOR BLOCK SHIRT, BLACK**

AVAILABLE FOR DELIVERY NOW

Fabric: 65% polyester, 35% cotton

Graphics: Embroidery on front and back

**XS-3XL**      **2866156**  
**US: \$59.99**    **CAN: \$79.99**



**MOTO**

**QUILT STITCH HOODIE, RED**

AVAILABLE FOR DELIVERY NOW

Fabric: 70% cotton, 30% polyester marl brushback

Graphics: Embroidery on front and back

**XS-3XL**      **2868942**  
**US: \$69.99**    **CAN: \$89.99**



**MOTO**

**LOGO ZIP HOODIE, RED**

AVAILABLE FOR DELIVERY NOW

Fabric: 70% cotton, 30% polyester marl loopback

Graphics: Print on front and hood

**XS-3XL**      **2869681**  
**US: \$79.99**    **CAN: \$104.99**



**FINAL SEASON**

**HERITAGE**

**CASUAL HOODIE, BLACK**

AVAILABLE FOR DELIVERY NOW. FINAL SEASON

Fabric: 70% cotton, 30% polyester loopback

Graphics: Print on front

**XS-3XL**      **2869680**  
**US: \$69.99**    **CAN: \$89.99**



**NEW**

**HAND PRINTED TEE, BLUE**

Fabric: 100% cotton  
Graphics: Print on front

6-7 YEARS/ S	286075602
8-9 YEARS/ M	286075603
10-11 YEARS/ L	286075606
12-14 YEARS/ XL	286075609
US: \$19.99	CAN: \$26.99



**NEW**

**HEADRESS ICON TEE, WHITE**

Fabric: 60% cotton, 40% polyester slub  
Graphics: Print on front

6-7 YEARS/ S	286075702
8-9 YEARS/ M	286075703
10-11 YEARS/ L	286075706
12-14 YEARS/ XL	286075709
US: \$19.99	CAN: \$26.99



**NEW**

**MOTOCROSS TEE, WHITE**

Fabric: 60% cotton, 40% polyester slub  
Graphics: Print and embroidery on front

6-7 YEARS/ S	286075802
8-9 YEARS/ M	286075803
10-11 YEARS/ L	286075806
12-14 YEARS/ XL	286075809
US: \$24.99	CAN: \$32.99



KID'S TEES								
YEARS	6-7		8-9		10-11		12-14	
	IN	CM	IN	CM	IN	CM	IN	CM
CHEST	13.8	35	14.5	38	16.1	41	17.9	45.5
FRONT LENGTH FROM HSP	19.7	50	21.5	54.5	23.2	59	25.9	65.75

JUNIOR'S BODYSUIT						
MONTHS	3-6		6-12		12-18	
	IN	CM	IN	CM	IN	CM
CHEST	9	23	9.5	24	10	25
FRONT LENGTH FROM HSP	15.5	40	16.5	42	17.5	44

JUNIOR'S LOGO TEE								
YEARS	2-3		3-4		4-5		5-6	
	IN	CM	IN	CM	IN	CM	IN	CM
CHEST	12.2	31	13	33	13.8	35	14.6	37
FRONT LENGTH FROM HSP	15	38	16.1	41	17.3	44	18.5	47



**LONG SLEEVE BODYSUIT, ASSORTED**  
3 PACK

AVAILABLE FOR DELIVERY NOW

Fabric: 100% cotton  
Graphics: Print on front & back

<b>SIZE:</b>	<b>PART #:</b>
3-6 MONTHS/ S	286880102
6-12 MONTHS/ M	286880103
12-18 MONTHS/ L	286880106
US: \$44.99	CAN: \$59.99



**SHORT SLEEVE BODYSUIT, ASSORTED**  
3 PACK

AVAILABLE FOR DELIVERY NOW

Fabric: 100% cotton  
Graphics: Print on front & back

<b>SIZE:</b>	<b>PART #:</b>
3-6 MONTHS/ S	286880202
6-12 MONTHS/ M	286880203
12-18 MONTHS/ L	286880206
US: \$39.99	CAN: \$54.99



**LOGO TEES, ASSORTED**  
2 PACK

AVAILABLE FOR DELIVERY NOW

Fabric: 100% cotton  
Graphics: Print on front & back

<b>SIZE:</b>	<b>PART #:</b>
2-3 YEARS/ XS	286886701
3-4 YEARS/ S	286886702
4-5 YEARS/ M	286886703
5-6 YEARS/ L	286886706
US: \$39.99	CAN: \$54.99

## BLUEPRINT APPAREL CO.

Blueprint Apparel is committed to providing each dealer with the best customer experience possible. Our commitment begins with an industry leading production facility and quality management system that has been certified ISO 9001. It continues by providing you with quality custom apparel and merchandise designed to specification and delivered on time.

### Placing Your Order

- Go to [www.indianvictorydealermerchandise.com](http://www.indianvictorydealermerchandise.com)
- Click on "ORDER NOW"
- Enter your dealership username and password

### Contact Us:

We want to help make this the best experience possible.  
Email: [service@blueprintapparelco.com](mailto:service@blueprintapparelco.com)  
Telephone: 1-800-299-8435



MIX & MATCH PREPRINTED FRONT OPTIONS



CUSTOM & TEMPLATE DESIGN OPTIONS



LADIES' BLING



CUSTOM RACING



CUSTOM ACCESSORIES

## BLUEPRINT CUSTOM DESIGN PORTFOLIO

Each shirt is designed to be the centerpiece of collectible t-shirts available exclusively from your dealership.



# ORDERING FROM JACK DANIEL'S® & INDIAN MOTORCYCLE®



Indian Motorcycle®, America's First Motorcycle Company™, and Jack Daniel's® are proud to announce a collaboration of an exclusive collection of co-branded merchandise. This line includes custom designed apparel and accessories. These products are available exclusively through Indian Motorcycle® dealers, at Indian Motorcycle® & Jack Daniel's® events and via the Jack Daniel's® Distillery store. Jack Daniel's® and Indian Motorcycle® are excited to extend the collaboration of these two iconic American brands to expand the reach and exposure of their brands and message.

### Placing Your Order

- Go to [jdindianmerchandise.com](http://jdindianmerchandise.com) and enter your information if you have already been set up within the store
- If you have not been set up within the store, please contact us at [JDIndianApparel@imageseller.com](mailto:JDIndianApparel@imageseller.com) or call our customer service line at 800-716-9128
- Once logged in you are able to shop!

### Lead Time For Your Orders

Each item is made to order to ensure that the highest attention to detail is given to every order.

Orders placed online will ship within 3-4 weeks of order date.

### Merchandise Collections

Not sure what to buy or exactly how much? Let us take that stress away! The site has pre-set up merchandise collections that you can purchase and will even receive a discount when ordering!

With four kits to choose from, you're sure to find one that fits your needs.

### Contact Us

Have questions, comments, or a concern? We're happy to help! Please contact us at [JDIndianApparel@imageseller.com](mailto:JDIndianApparel@imageseller.com) or call our customer service line at 800-716-9128.



## MERCHANDISE COLLECTIONS



## MEN'S APPAREL



## LADIES' APPAREL



## HEADWEAR



## NOVELTIES





RETRO TEE  
PAGE 43

## INDIAN MOTORCYCLE® EYEWEAR

The Indian Motorcycle® eye-wear range has been developed to look great and also perform when riding. All styles are CE certified and have lightweight frames and shatter resistant lenses, which also include UVA/UVB filters, anti-fog coatings and are scratch resistant.

The Highway, Lifestyle, Performance & Semi-Pro Sunglasses are also prescription ready. 7eye by Panoptx provides repair services and prescription lenses at additional cost. Please consult local laws regarding overseas made prescription lenses. For quotations, please contact 7eye by Panoptx USA at (001) 909-509-8228 or info@7eye.com



**NEW**

### GOLD AVIATOR SUNGLASSES

CE

Wear one of the most iconic sunglasses models in the world with any kind of outfit. With a classic gold frame, you can see the world through crystal green lenses.

Frame: Gold-tone stainless metal frame  
Lens: 6R Polycarbonate Green lens  
Additional features: 100% UVA+UVB protection, shatter-resistant.  
CE certified; EU Regulation 2016/425. EN ISO 12312-1:2013+A1:2015 Lens Filter Category 3

**ONE SIZE**      **2860740**  
**US: \$49.99**      **CAN: \$67.99**



**NEW**

### SILVER AVIATOR SUNGLASSES

CE

Wear one of the most iconic sunglasses models in the world with any kind of outfit. With a silver frame, you can see the world through brown gradient lenses.

Frame: Silver-tone stainless metal frame  
Lens: 6R Polycarbonate Gradient Brown lens  
Additional features: 100% UVA+UVB protection, shatter-resistant.  
CE certified; EU Regulation 2016/425. EN ISO 12312-1:2013+A1:2015 Lens Filter Category 3

**ONE SIZE**      **2860743**  
**US: \$49.99**      **CAN: \$67.99**



**ATLANTA SUNGLASSES**



AVAILABLE FOR DELIVERY NOW

Add a hint of color with these matte framed sunglasses with blue rubber details on the earpieces.

Frame: Lightweight 100% polycarbonate matte black frame with blue rubber details on the earpieces  
 Lens: 6R Curve Gray Polycarbonate lens+Blue Revo coating  
 Additional features: 100% UVA+UVB protection, shatter-resistant.  
 CE certified; EU Regulation 2016/425. EN ISO 12312-1:2013+A1:2015 Lens Filter Category 3

**ONE SIZE**      **2869714**  
**US: \$29.99**      **CAN: \$41.99**



**PHOENIX SUNGLASSES**



AVAILABLE FOR DELIVERY NOW

These brown sunglasses are a versatile and stylish accessory you can wear with any kind of outfit.

Frame: Lightweight 100% polycarbonate gloss tortoise shell frame with antique brass Indian Motorcycle® logo  
 Lens: 6R Polycarbonate Gradient Brown lens  
 Additional features: 100% UVA+UVB protection, shatter-resistant.  
 CE certified; EU Regulation 2016/425. EN ISO 12312-1:2013+A1:2015 Lens Filter Category 3

**ONE SIZE**      **2869715**  
**US: \$29.99**      **CAN: \$41.99**



**FREEWAY SUNGLASSES**



AVAILABLE FOR DELIVERY NOW

Ride confident with our clear lens Freeway Sunglasses which feature an eyecup to reduce wind. Comes with branded zipper case and microfiber cloth.

Frame: Lightweight TR90 Nylon glossy black frame  
 Lens: Clear polycarbonate lens  
 Additional features: 100% UVA+UVB protection, shatter-resistant, anti-fog coating, non-detachable EVA foam eyecup to reduce wind & peripheral light for a more comfortable ride.  
 CE certified; Directive 89/686/EEC. EN ISO 12312-1:2013+A1:2015 Lens Category 1

**ONE SIZE**      **2869647**  
**US: \$29.99**      **CAN: \$41.99**



**LIBERTY SUNGLASSES**



AVAILABLE FOR DELIVERY NOW

Be bold with these frames ideal for riding. Comes with branded zipper case and microfiber cloth.

Frame: Lightweight 100% polycarbonate glossy black frame with antique brass logo  
 Lens: Brown polycarbonate lens  
 Additional features: 100% UVA+UVB protection, shatter-resistant, anti-fog coating, non-detachable EVA foam eyecup to reduce wind & peripheral light for a more comfortable ride.  
 CE certified; Directive 89/686/EEC. EN ISO 12312-1:2013+A1:2015 Lens Category 1

**ONE SIZE**      **2869646**  
**US: \$39.99**      **CAN: \$55.99**



**HIGHWAY SUNGLASSES**



AVAILABLE FOR DELIVERY NOW

The Highway Sunglasses offer superior performance levels. Made from a lightweight and hard wearing nylon frame with polycarbonate lens. Comes with branded zipper case and microfiber cloth.

Frame: Lightweight TR90 Nylon glossy black frame  
 Lens: Clear polycarbonate lens  
 Additional features: 100% UVA+UVB protection, shatter-resistant, detachable EVA foam eyecup. Prescription Ready.  
 CE certified; EU Regulation 2016/425. EN ISO 12312-1:2013+A1:2015 Lens Filter Category 3. Impact Resistance Level 2

**ONE SIZE**      **2869648**  
**US: \$59.99**      **CAN: \$79.99**



## ICON SUNGLASSES



AVAILABLE FOR DELIVERY NOW

Ride confident with our yellow lens sunglasses. The color negates oncoming headlights and make surroundings appear brighter in dull conditions.

Frame: Lightweight 100% polycarbonate matte black frame  
 Lens: Yellow polycarbonate lens  
 Additional features: 100% UVA+UVB protection, shatter-resistant, anti-fog coating, non-detachable EVA foam eyecup to reduce wind & peripheral light for a more comfortable ride.  
 CE certified; Directive 89/686/EEC. EN ISO 12312-1:2013+A1:2015 Lens Filter Category 0

**ONE SIZE**      **2868696**  
**US: \$29.99**      **CAN: \$41.99**



## LEGENDARY SUNGLASSES



AVAILABLE FOR DELIVERY NOW

Be bold and legendary with these frames ideal for riding.

Frame: Lightweight 100% polycarbonate glossy black & white patterned frame  
 Lens: Gray polycarbonate lens  
 Additional features: 100% UVA+UVB protection, shatter resistant, anti-fog coating, non-detachable EVA foam eyecup to reduce wind & peripheral light for a more comfortable ride.  
 CE certified; Directive 89/686/EEC. EN ISO 12312-1:2013+A1:2015 Lens Filter Category 3

**ONE SIZE**      **2868697**  
**US: \$39.99**      **CAN: \$55.99**



## SHADOW SUNGLASSES



AVAILABLE FOR DELIVERY NOW

Be ride ready with the Shadow Sunglasses. Featuring a detachable EVA foam eye cup that is ideal for riding and casual use.

Frame: Lightweight 100% polycarbonate glossy black frame with matte temple design  
 Lens: Gray polycarbonate lens  
 Additional features: 100% UVA+UVB protection, shatter-resistant, anti-fog coating, detachable EVA foam eyecup to reduce wind & peripheral light for a more comfortable ride.  
 CE certified; Directive 89/686/EEC. EN ISO 12312-1:2013+A1:2015 Lens Filter Category 3

**ONE SIZE**      **2868846**  
**US: \$39.99**      **CAN: \$55.99**



## SPIRIT SUNGLASSES



AVAILABLE FOR DELIVERY NOW

Add a hint of color with these midnight blue framed sunglasses with rubber nose protector.

Frame: Lightweight 100% polycarbonate glossy dark blue frame  
 Lens: Gray polycarbonate lens  
 Additional features: 100% UVA+UVB protection, shatter-resistant, anti-fog coating.  
 CE certified; Directive 89/686/EEC. EN ISO 12312-1:2013+A1:2015  
 Lens Filter Category 3

**ONE SIZE**      **2868847**  
**US: \$29.99**      **CAN: \$41.99**



## ENTRY SUNGLASSES



AVAILABLE FOR DELIVERY NOW

These sunglasses are designed to be worn when riding and include an EVA foam eyecup to reduce wind and peripheral light.

Frame: Lightweight TR90 Nylon matte black frame  
 Lens: Gray polycarbonate lens  
 Additional features: 100% UVA+UVB protection, shatter-resistant, anti-fog coating, non-detachable EVA foam eyecup to reduce wind & peripheral light for a more comfortable ride.  
 CE certified; Directive 89/686/EEC. EN ISO 12312-1:2013+A1:2015 Lens Filter Category 3

**ONE SIZE**      **2863996**  
**US: \$29.99**      **CAN: \$39.99**



## LIFESTYLE SUNGLASSES



AVAILABLE FOR DELIVERY NOW

The Lifestyle Sunglasses look great on or off the bike, made from lightweight polycarbonate frame and with a shatter resistant UVA/UVB lens.

Frame: Lightweight polycarbonate matte black frame  
 Lens: Brown polycarbonate lens  
 Additional features: 100% UVA+UVB protection, shatter resistant, anti-fog coating. Prescription ready.  
 CE certified; Directive 89/686/EEC. EN ISO 12312-1:2013+A1:2015 Lens Filter Category 3

**ONE SIZE**      **2863973**  
**US: \$29.99**      **CAN: \$39.99**





**PERFORMANCE SUNGLASSES** CE

AVAILABLE FOR DELIVERY NOW

The riders choice, the Performance Sunglasses offer a wide range of features for your riding needs. From the high quality, lightweight Rochflex frame to the quick reacting photochromic lens that changes from clear to gray depending on the light. The PU foam eye-cup offers superior wind and peripheral light protection.

Frame: Quality lightweight RochFlex glossy black frame  
 Lens: Photochromic Eclipse polycarbonate lens changes from clear to gray. Transition time is 60-90 secs.  
 Additional features: 100% UVA+UVB protection, shatter-resistant, anti-fog coating, detachable latex-free PU foam eyecup with sweat resistant patented rubber-seal on top of foam. Prescription ready. CE certified; Directive 89/686/EEC. EN ISO 12312-1:2013+A1:2015 Lens Filter Category 3. Impact Resistance Level 2.

**ONE SIZE**      **2864405**  
**US: \$99.99**      **CAN: \$129.99**



**SEMI PRO SUNGLASSES** CE

AVAILABLE FOR DELIVERY NOW

The Semi Pro sunglasses offer superior performance levels. Made from a lightweight and hard wearing nylon frame with a polycarbonate lens.

Frame: Lightweight TR90 Nylon matte black frame  
 Lens: Gray polycarbonate lens  
 Additional features: 100% UVA+UVB protection, shatter-resistant, detachable EVA foam eyecup. Prescription ready. CE certified; EU Regulation 2016/425. EN ISO 12312-1:2013+A1:2015 Lens Filter Category 3. Impact Resistance Level 2

**ONE SIZE**      **2864404**  
**US: \$59.99**      **CAN: \$79.99**



**IMC GOGGLE** CE **100%**

AVAILABLE FOR DELIVERY NOW

This custom Barstow goggle is a stylish and professional collaboration with 100%, featuring the custom jacquard logo of Indian Motorcycle® on the adjustable strap and etched logo on lens. It is equipped with triple-layer face foam providing excellent moisture management on the move and the gray anti-fog Lexan® lens with integrated pins for seamless tear off application. The upper vents in signature red force air in and channel out moisture to reduce fogging. CE certified; Directive 89/686/EEC. EN 1836:2005+A1:2007 Lens Filter Category 1.

**ONE SIZE**      **2868961**  
**US: \$99.99**      **CAN: \$129.99**



**FINAL SEASON**  
**COSTE GOGGLE** CE **100%**

AVAILABLE FOR DELIVERY NOW. FINAL SEASON

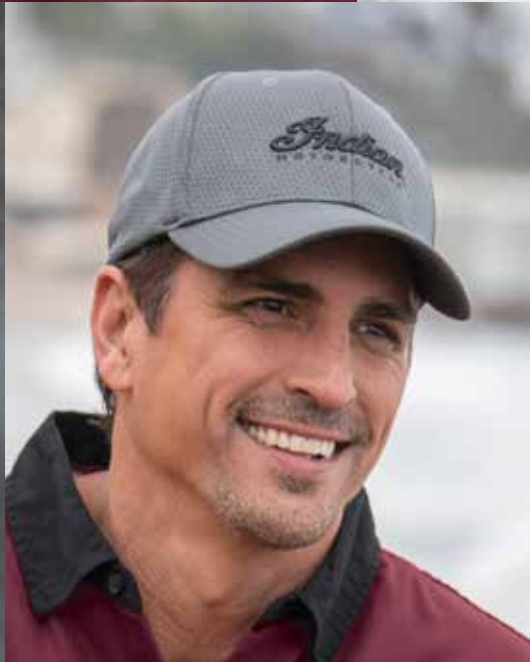
This custom goggle is a stylish and professional collaboration with 100% and artist Dimitri Coste. It is equipped with triple-layer face foam providing excellent moisture management on the move and the gray anti-fog Lexan® lens have integrated pins for seamless tear off application. The upper vents in signature red force air in and channel out moisture to reduce fogging. CE certified; Directive 89/686/EEC. EN 1836:2005+A1:2007 Lens Filter Category 1.

**ONE SIZE**      **2869713**  
**US: \$99.99**      **CAN: \$129.99**





POM POM BEANIE  
PAGE 79



**NEW**

**HERITAGE** PERFORMANCE HAT, GRAY

Fabric: 100% polyester  
Features: Embroidered logo on front and back, flex fit, curved skip

S/M	286074403
L/XL	286074406
US: \$24.99	CAN: \$32.99



**NEW**

**HERITAGE** HEADDRESS LOGO HAT, BLUE

Fabric: 100% cotton  
Features: Woven patch on front, curved skip

**ONE SIZE**      **2860748**  
**US: \$19.99**      **CAN: \$26.99**



**HERITAGE** QUALITY TRUCKER HAT, BLACK

AVAILABLE FOR DELIVERY NOW

Fabric: Front: 100% cotton  
Back: 100% polyester mesh  
Features: Embroidered patch on front, curved skip

**TRUCKER**

**ONE SIZE**      **2862313**  
**US: \$19.99**      **CAN: \$26.99**



**HERITAGE** CIRCLE PATCH HAT, MULTICOLOR

AVAILABLE FOR DELIVERY NOW

Fabric: 100% cotton  
Features: Embroidered graphic on front, graphic patch on the side, curved skip

**ONE SIZE**      **2863628**  
**US: \$19.99**      **CAN: \$26.99**



**HERITAGE** CIRCLE ICON TRUCKER HAT, OLIVE

AVAILABLE FOR DELIVERY NOW

Fabric: Front: 100% cotton  
Back: 100% polyester mesh  
Features: Embroidered patch, curved skip

**TRUCKER**

**ONE SIZE**      **2868694**  
**US: \$19.99**      **CAN: \$26.99**



**HERITAGE** BLOCK PATCH HAT

AVAILABLE FOR DELIVERY NOW

Fabric: Front: 100% cotton  
Back: 100% polyester mesh  
Features: Logo patch, curved skip

**TRUCKER**

**ONE SIZE**      **2869641**  
**US: \$19.99**      **CAN: \$26.99**



**HERITAGE** LOGO HAT, BLACK

AVAILABLE FOR DELIVERY NOW

Fabric: 100% cotton  
Features: Embroidered logo on front; contrast color under brim, curved skip

**ONE SIZE**      **2863727**  
**US: \$19.99**      **CAN: \$26.99**



**HERITAGE** PORT MARL HAT, RED

AVAILABLE FOR DELIVERY NOW

Fabric: Front: 100% cotton  
Back: 100% polyester mesh  
Features: Leather patch, curved skip

**TRUCKER**

**ONE SIZE**      **2869640**  
**US: \$19.99**      **CAN: \$26.99**



**HERITAGE** BAKER BOY HAT, GRAY

AVAILABLE FOR DELIVERY NOW

Fabric: 50% wool, 50% polyester  
Features: Embroidered logo on back, quilted interior; snap down peak; curved skip

**S/M**      **286896003**  
**L/XL**      **286896006**  
**US: \$24.99**      **CAN: \$32.99**



**HERITAGE** ARMY HAT, GRAY

AVAILABLE FOR DELIVERY NOW

Fabric: 100% cotton  
Features: Embroidered logo on front, curved skip

**ONE SIZE**      **2868945**  
**US: \$19.99**      **CAN: \$26.99**

ATLANTA SUNGLASSES  
PAGE 71



**NEW**

**HIGH PROFILE BLOCK LOGO HAT, BLACK**

Fabric: Front: 100% polyester,  
Back: 100% polyester mesh  
Features: Print on front, high profile fit, flat skip

**ROGUE**

**TRUCKER**

**ONE SIZE**                      **2860747**  
**US: \$24.99**                      **CAN: \$32.99**



**BIG SIZES**

**IMC FLEX FIT HAT, BLACK**

AVAILABLE FOR DELIVERY NOW

Fabric: 97% cotton, 3% spandex  
Features: Embroidered logo on front,  
woven patch on back, flex fit, flat skip

**ROGUE**

**S/M**                                      **286869203**  
**L/XL**                                      **286869206**  
**US: \$19.99**                              **CAN: \$26.99**

ENTRY SUNGLASSES  
PAGE 72



**CHECKERED HAT, BLACK**

AVAILABLE FOR DELIVERY NOW

Fabric: Front: 100% cotton,  
Back: 100% polyester mesh  
Features: Embroidered logo on front, flat skip

**ROGUE**

**TRUCKER**

**ONE SIZE**                              **2868959**  
**US: \$19.99**                              **CAN: \$26.99**



**NEW**

**HIGH PROFILE DENIM HAT, BLUE**

Fabric: Front: 100% cotton,  
Back: 100% polyester mesh  
Features: Print on front, high profile fit, flat skip

**MOTO**  
**TRUCKER**

**ONE SIZE**      **2860745**  
**US: \$24.99**      **CAN: \$32.99**



**NEW**

**HIGH PROFILE RETRO HAT, MULTICOLOR**

Fabric: Front: 100% polyester foam  
Back: 100% polyester mesh  
Features: Print on front, high profile fit, flat skip

**MOTO**  
**TRUCKER**

**ONE SIZE**      **2860755**  
**US: \$24.99**      **CAN: \$32.99**



**NEW**

**HIGH PROFILE PATCH HAT, BROWN**

Fabric: Front: 100% cotton,  
Back: 100% polyester mesh  
Features: Woven patch on front, high profile fit, flat skip

**MOTO**  
**TRUCKER**

**ONE SIZE**      **2860746**  
**US: \$24.99**      **CAN: \$32.99**



**MOTO**

**ICON LOGO HAT, MULTICOLOR**

AVAILABLE FOR DELIVERY NOW

Fabric: 100% washed cotton canvas  
Features: Woven patch on front, flat skip

**ONE SIZE**      **2869761**  
**US: \$19.99**      **CAN: \$26.99**



**MOTO**

**HEADRESS LOGO HAT, GRAY**

AVAILABLE FOR DELIVERY NOW

Fabric: Front: 100% cotton,  
Back: 100% polyester mesh  
Features: Embroidered patch, flat skip

**TRUCKER**

**ONE SIZE**      **2867609**  
**US: \$19.99**      **CAN: \$26.99**



**MOTO**

**SCRIPT ICON TRUCKER HAT, MULTICOLOR**

AVAILABLE FOR DELIVERY NOW

Fabric: Front: 100% cotton,  
Back: 100% polyester mesh  
Features: Embroidered patch on front, flat skip

**TRUCKER**

**ONE SIZE**      **2869639**  
**US: \$19.99**      **CAN: \$26.99**



**MOTO**

**FTR™ 1200 TRUCKER HAT, MULTICOLOR**

AVAILABLE FOR DELIVERY NOW

Fabric: Front: 100% polyester foam,  
Back: 100% polyester mesh  
Features: Oil based print, curved skip

**TRUCKER**

**ONE SIZE**      **2868958**  
**US: \$19.99**      **CAN: \$26.99**



**MOTO**

**CAMO TRUCKER HAT, BLACK**

AVAILABLE FOR DELIVERY NOW

Fabric: Front: 100% polyester foam,  
Back: 100% polyester mesh  
Features: Oil based print, flat skip

**TRUCKER**

**ONE SIZE**      **2869703**  
**US: \$19.99**      **CAN: \$26.99**



**NEW**

**HERITAGE**

**WOMEN'S DIAMANTE CAP, BLACK**

Fabric: 100% cotton  
Features: Diamante print on front, curved skip

**ONE SIZE**      **2860749**  
**US: \$24.99**      **CAN: \$32.99**

# INDIAN MOTORCYCLE® HEADGEAR



**NEW**

## HERITAGE HEADRESS LOGO LINEN SCARF, MULTICOLOR

78.7" (200cm) x 19.7" (50cm).

Fabric: 55% cotton, 45% linen  
Features: Printed logos, wrinkle finishing

**ONE SIZE**      **2860753**  
**US: \$29.99**      **CAN: \$39.99**



## HERITAGE COTTON LINEN SCARF, MULTICOLOR

AVAILABLE FOR DELIVERY NOW

78.7" (200cm) x 19.7" (50cm).

Fabric: 55% cotton, 45% linen  
Features: Printed logos, wrinkle finish

**ONE SIZE**      **2864426**  
**US: \$24.99**      **CAN: \$34.99**



## HERITAGE MERINO WOOL SCARF, BLACK

AVAILABLE FOR DELIVERY NOW

10.2" (26cm) x 63" (160cm).

Fabric: 100% merino wool  
Features: Knitted in logos and stripes

**ONE SIZE**      **2869765**  
**US: \$59.99**      **CAN: \$79.99**



## HERITAGE SILK BANDANAS, MULTICOLOR

AVAILABLE FOR DELIVERY NOW

23.6" (60cm) x 23.6" (60cm).

Fabric: 100% silk  
Features: All over printed logos

**ONE SIZE**  
**BLACK**      **2869762**  
**NAVY**      **2869763**  
**US: \$34.99**      **CAN: \$46.99**



## HERITAGE BE LEGENDARY™ BANDANA, MULTICOLOR

AVAILABLE FOR DELIVERY NOW

23.6" (60cm) x 23.6" (60cm).

Fabric: 100% cotton  
Features: Printed logos

**ONE SIZE**      **2867608**  
**US: \$14.99**      **CAN: \$22.99**



## HERITAGE INDIAN MOTORCYCLE® BANDANA, RED

AVAILABLE FOR DELIVERY NOW

23.6" (60cm) x 23.6" (60cm).

Fabric: 100% cotton  
Features: Printed script & headdress logos

**ONE SIZE**      **2863846**  
**US: \$14.99**      **CAN: \$19.99**



## HERITAGE HEADRESS MULTIFUNCTIONAL HEADWEAR, BLACK

AVAILABLE FOR DELIVERY NOW

Fabric: 100% polyester  
Features: All over print

**ONE SIZE**  
**HEADRESS**      **2869642**  
**ICON LOGOS**      **2865233**  
**US: \$14.99**      **CAN: \$19.99**



## HERITAGE HEADRESS HEAD TIE, BLACK

AVAILABLE FOR DELIVERY NOW

Fabric: 100% cotton  
Features: All over print, elasticated rear band for adjustability

**ONE SIZE**      **2869643**  
**US: \$14.99**      **CAN: \$19.99**



## HERITAGE HEAD TIE, BLACK

AVAILABLE FOR DELIVERY NOW

Fabric: 100% cotton  
Features: All over print, elasticated rear band for adjustability

**ONE SIZE**      **2865234**  
**US: \$14.99**      **CAN: \$19.99**



**NEW**

**ROGUE**

**BLOCK LOGO BEANIE, BLACK**

Fabric: 100% acrylic  
Features: Branded wrap twill label

**ONE SIZE**      **2860751**  
**US: \$29.99**      **CAN: \$39.99**



**NEW**

**MOTO**

**SHIELD PATCH BEANIE, BLUE**

Fabric: 100% acrylic  
Features: Logo patch on front

**ONE SIZE**      **2860752**  
**US: \$29.99**      **CAN: \$39.99**



**NEW**

**MOTO**

**WOMEN'S POM POM BEANIE, BLACK**

Fabric: 100% acrylic with 100% raccoon fur pom pom  
Features: Branded silver disk, removable pom pom

**ONE SIZE**      **2860750**  
**US: \$39.99**      **CAN: \$54.99**



**NEW**

**HERITAGE**

**EAR WARMER, BLACK**

Fabric: Shell: 95% polyester, 5% elastane  
Lining: 95% polyester, 5% elastane  
Features: Printed logo

**ONE SIZE**      **2860742**  
**US: \$19.99**      **CAN: \$26.99**



**NEW**

**HERITAGE**

**REFLECTIVE LOGO HEAD WRAP, BLACK**

Fabric: Shell: 95% polyester mesh, 5% elastane  
Lining: 95% polyester mesh, 5% elastane  
Features: Printed reflective logo

**ONE SIZE**      **2860741**  
**US: \$24.99**      **CAN: \$32.99**



**HERITAGE**

**HEADRESS NECK WARMER, BLACK**

AVAILABLE FOR DELIVERY NOW

Fabric: Shell: 95% polyester, 5% elastane  
Lining: 95% cotton, 5% elastane  
Features: Printed logos, elastic toggle

**ONE SIZE**      **2869764**  
**US: \$24.99**      **CAN: \$32.99**



**HERITAGE**

**HEAD WRAP, BLACK**

AVAILABLE FOR DELIVERY NOW

Fabric: Shell: 100% cotton  
Lining: 100% polyester mesh  
Features: Embroidered logo on front and back

**ONE SIZE**      **2863844**  
**US: \$19.99**      **CAN: \$26.99**



**HERITAGE**

**ICON FLEECE NECK WARMER, BLACK**

AVAILABLE FOR DELIVERY NOW

Fabric: Shell: 100% polyester fleece  
Lining: 95% cotton, 5% elastane  
Features: Embroidered logo on front and back, debossed logo on sides, elastic toggle

**ONE SIZE**      **2863998**  
**US: \$24.99**      **CAN: \$32.99**



**HERITAGE**

**ICON FLEECE BEANIE, BLACK**

AVAILABLE FOR DELIVERY NOW

Fabric: Shell: 100% polyester fleece  
Lining: 95% cotton, 5% elastane  
Features: Embroidered logo on front and back, debossed logo on sides

**ONE SIZE**      **2863997**  
**US: \$24.99**      **CAN: \$32.99**







**DOG COLLAR**

AVAILABLE FOR DELIVERY NOW

This black leather dog collar is lined with soft, quick dry neoprene for a comfortable fit. Silver reflective, secure buckle with engraved logo and D-ring and 5 punch holes. Available in two sizes. Size S/M: 1" (2.5cm) wide x 12.2" - 15.7" (31cm - 40cm) adjustable length. Size L/XL: 1.8" (3.5cm) wide x 16.1" - 19.7" (41cm - 50cm) adjustable length.

**S/M** 286969503  
**L/XL** 286969506  
**US: \$39.99** **CAN: \$54.99**



**DOG LEASH**

AVAILABLE FOR DELIVERY NOW

Soft black leather, made to stand up to any active dog and their human. Design features neoprene lined handle for ultimate comfort. Secure chunky antique silver buckle with spring mechanism and embossed branding. 0.8" (2cm) wide x 63" (160cm) tall.

**ONE SIZE** 2869696  
**US: \$39.99** **CAN: \$54.99**



**PET BANDANA - 2 PACK**

AVAILABLE FOR DELIVERY NOW

Give your pet real Indian Motorcycle® style. Set includes two different graphics with repeating pattern of branded logos. Available in two sizes. Size S/M: 15.7" (40cm) square. Size L/XL: 19.7" (50cm) square.

**S/M** 286969703  
**L/XL** 286969706  
**US: \$24.99** **CAN: \$32.99**



**DOG TEE - 2 PACK**

AVAILABLE FOR DELIVERY NOW

This branded 100% cotton dog tee with comfortable coverage allows your pet to show off Indian Motorcycle® pride. Set includes two different graphics with script & icon logos. Available in three sizes. See size chart below.

**SMALL** 286969802  
**MEDIUM** 286969803  
**LARGE** 286969806  
**US: \$29.99** **CAN: \$39.99**



**FEEDING BOWL - 2 PACK**

AVAILABLE FOR DELIVERY NOW

Our Indian Motorcycle® stainless steel dog bowl is perfect to feed your hungry pet. Bowls have printed logo, rubber bottom and polished finish for long-lasting beauty. Set includes two sizes: 21oz (610ml) & 32oz (910ml).

**21oz. & 32oz.** 2869699  
**US: \$29.99** **CAN: \$39.99**

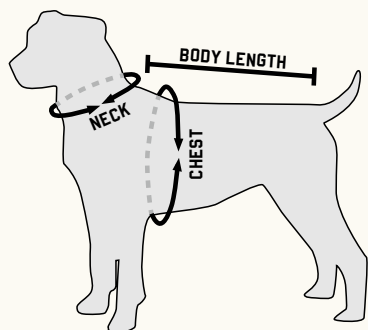


**SQUEAK BALL - 5 PACK**

AVAILABLE FOR DELIVERY NOW

Keep your pet happy with set of five Indian Motorcycle® Squeak Tennis Balls. Made from a tough tennis ball material with built in squeaker, they float in water making them perfect whatever your surroundings. 2.5" (6.4cm) wide.

**2.5"** 2869700  
**US: \$19.99** **CAN: \$26.99**



DOG TEE						
SIZE	S		M		L	
	IN	CM	IN	CM	IN	CM
Neck Width	6.1	15.5	6.9	17.5	7.7	19.5
Chest	18.2	46	22	56	26	66
Back Length	12.2	31	15.2	38.5	18.1	46



**CHEW TOY**

AVAILABLE FOR DELIVERY NOW

This branded 100% natural rubber Indian Motorcycle® Chew Toy comes in a great shape for flinging, tugging and chewing. Great for dogs who love the standard bone shape. 2.8" (7cm) wide x 7.1" (18cm) tall.

**2.8" x 7.1"** 2869701  
**US: \$16.99** **CAN: \$22.99**



**PULL TOY**

AVAILABLE FOR DELIVERY NOW

Our shaped rubber Indian Motorcycle® tank Pull Toy will provide interactive fun for you and your dog. The rugged ropes will help keep gums and teeth clean and healthy. The tank has star shaped holes on each end so you can stuff your pet with treats. 7.1" (18cm) tall.

**7.1"** 2869702  
**US: \$25.99** **CAN: \$35.49**



**NEW**

**IMC PERFORMANCE BACKPACK**

This technical backpack is functional and large. This backpack features highly protective compartment for laptops up to 15". There is large main compartment, front compartment with internal organization, pen slots and additional secure-zip pocket, external pocket for sunglasses, phone or keys. There are two external mesh water bottle pockets on the sides. The back straps are padded and adjustable. The mesh padded back panel is highly breathable. Bag dimensions: 19.7" (50cm) high x 13.8" (35cm) wide x 6.3" (16cm) deep.

**ONE SIZE**      **2860754**  
**US: \$99.99**      **CAN: \$129.99**



**FINAL SEASON**

**WAXED COTTON TOTE**

AVAILABLE FOR DELIVERY NOW. FINAL SEASON

This waxed cotton women's tote is a stylish and durable option made of a premium heavy-duty waxed cotton canvas with leather trim and adjustable shoulder straps. Additional features include; internal zip pocket, magnetic closing on pockets and flap, protective zip on main compartment using a durable brass zipper. Bag dimensions: 14" (36cm) high x 18" (4cm) wide x 6" (15cm) deep.

**ONE SIZE**      **2868689**  
**US: \$99.99**      **CAN: \$129.99**



**WOMEN'S CROSS BODY BAG**

AVAILABLE FOR DELIVERY NOW

Premium leather bag with debossed logo on the flap and 100% cotton fabric lining. The flap closes securely with magnetic snap buttons on both edges. The shoulder strap is adjustable and removable. This bag comes with a soft dust bag, perfect for gift giving. Bag dimensions: 11" (28cm) wide x 6.3" (16cm) high x 4.3" (11cm) deep.

**ONE SIZE**      **2869644**  
**US: \$119.99**    **CAN: \$155.99**



**WOMEN'S QUILTED PURSE**

AVAILABLE FOR DELIVERY NOW

This women's purse features soft black leather, quilted panels, branded lining and multiple compartments. 3.9" (10cm) high x 7.7" (19.5cm) wide.

**ONE SIZE**      **2868946**  
**US: \$69.99**     **CAN: \$89.99**



**BIKER CHAIN WALLET, BLACK**

AVAILABLE FOR DELIVERY NOW

This wallet features high quality leather, embossed brand logo, branded lining, multiple compartments and a heavy metal chain. 3.7" (9.4cm) high x 7" (17.8cm) wide.

**ONE SIZE**      **2867599**  
**US: \$59.99**     **CAN: \$83.99**



**TRI-FOLD WALLET, BLACK**

AVAILABLE FOR DELIVERY NOW

This premium black leather Tri-Fold Wallet provides a spacious, efficient, secure, and stylish way to carry valuables. Features branded 100% cotton lining and embossed logo. This wallet comes with a branded gift box. 4.3" (11cm) high x 3.7" (9.5cm) wide.

**ONE SIZE**      **2869645**  
**US: \$39.99**     **CAN: \$55.99**



**BI-FOLD WALLET, BLACK**

AVAILABLE FOR DELIVERY NOW

This wallet features high quality leather, embossed brand logo and branded lining. 3.7" (9.5cm) high x 4.3" (11cm) wide.

**ONE SIZE**      **2867600**  
**US: \$39.99**     **CAN: \$55.99**



**LEATHER FOB KEY CARRIER**

AVAILABLE FOR DELIVERY NOW

Real leather pouch to carry your bike key FOB in style. Embossed lock and unlock detailing at the back. Magnetic snap fastener included. (Key FOB not included.) 5.5cm x 5.5cm.

**ONE SIZE**      **2867558**  
**US: \$19.99**     **CAN: \$29.99**



**NEW**

### CHECKERED HEADDRESS SIGN

15.7" (40cm) wide x 11.8" (30cm) tall.

15.7" x 11.8"  
US: \$14.99

2860759  
CAN: \$19.99



**NEW**

### INDIAN MOTORCYCLE® RACING SIGN

14.2" (36cm) wide x 11.8" (30cm) tall.

14.2" x 11.8"  
US: \$19.99

2860760  
CAN: \$26.99



**NEW**

### BOMBER GIRL SIGN

15.7" (40cm) wide x 11.8" (30cm) tall.

15.7" x 11.8"  
US: \$14.99

2860761  
CAN: \$19.99



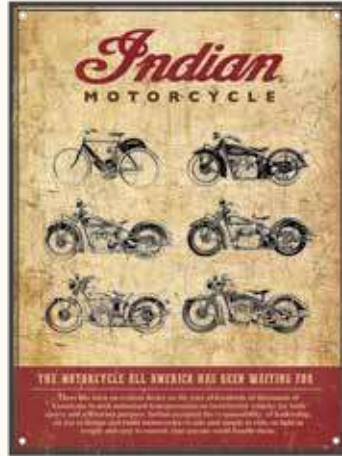
**NEW**

### CIRCLE ICON LOGO SIGN

12" (30.5cm) diameter.

12" DIA.  
US: \$19.99

2860762  
CAN: \$26.99



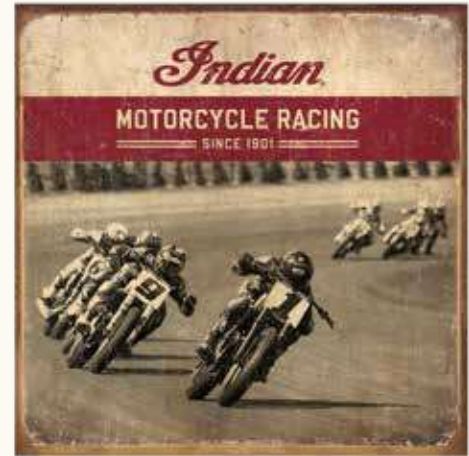
### MONTAGE SIGN

AVAILABLE FOR DELIVERY NOW

11.8" (30cm) wide x 15.7" (40cm) tall.

15.7" x 11.8"  
US: \$14.99

2869769  
CAN: \$19.99



### RACER SIGN

AVAILABLE FOR DELIVERY NOW

13.4" (34.1cm) wide x 13.4" (34.1cm) tall.

13.4" x 13.4"  
US: \$12.99

2868949  
CAN: \$17.99



### WOODEN CHALK SIGN

AVAILABLE FOR DELIVERY NOW

15.7" (40cm) wide x 10.8" (27.5cm) tall.

15.7" x 10.8"  
US: \$29.99

2868948  
CAN: \$39.99



### LEGEND LIVES SIGN

AVAILABLE FOR DELIVERY NOW

15.7" (40cm) wide x 11.8" (30cm) tall.

15.7" x 11.8"  
US: \$14.99

2869768  
CAN: \$19.99



### GENUINE PARTS & ACCESSORIES SIGN

AVAILABLE FOR DELIVERY NOW

15.7" (40cm) wide x 11.8" (30cm) tall.

15.7" x 11.8"  
US: \$12.99

2864421  
CAN: \$17.99



**CORRUGATED SIGN**

AVAILABLE FOR DELIVERY NOW

15.7" (40cm) wide x 11.8" (30cm) tall.

15.7" x 11.8"      2869767  
 US: \$29.99      CAN: \$39.99



**CIRCLE WOODEN SIGN**

AVAILABLE FOR DELIVERY NOW

Diameter: 15.7" (40cm).

15.7" DIA.      2869766  
 US: \$69.99      CAN: \$89.99



**FIRST MOTORCYCLE SIGN**

AVAILABLE FOR DELIVERY NOW

15.7" (40cm) wide x 11.8" (30cm) tall.

15.7" x 11.8"      2864420  
 US: \$12.99      CAN: \$17.99

# INDIAN MOTORCYCLE® MAN CAVE, GARAGE & OUTDOOR



## HOME RUG

AVAILABLE FOR DELIVERY NOW

Featuring the icon and headdress logos, this home rug will complete the total look of your man cave. Size: 116.2" (295cm) x 76.8" (195cm).

116.2" x 76.8"      2864417  
US: \$299.99      CAN: \$389.99



## WOOL THROW

AVAILABLE FOR DELIVERY NOW

This high quality, hardy and timeless wool throw with iconic headdress logo will provide you with the comfort and warmth you need. Machine washable. Made in USA. Size: 80" (203cm) x 50" (127cm).

80" x 50"      2864414  
US: \$249.99      CAN: \$324.99

**MADE IN**  
★ ★ ★ ★ ★  
**U.S.A**  
★ ★ ★ ★ ★



## DOOR MAT

AVAILABLE FOR DELIVERY NOW

Featuring the Indian Motorcycle® icon logo, this door mat will complete the look of your man cave or home. Size: 35.4" (90cm) x 23.6" (60cm).

35.4" x 23.6"      2869779  
US: \$49.99      CAN: \$67.99



## LOGO BIKE MAT

AVAILABLE FOR DELIVERY NOW

A heavy-duty garage mat to park your bike on or kneel on while doing maintenance. Mat is 103.9" (264cm) x 52.4" (133cm).

103.9" x 52.4"      2863879  
US: \$219.99      CAN: \$284.99



## HEADDRESS TOWEL

AVAILABLE FOR DELIVERY NOW

Featuring the headdress and script logos, this oversized towel will provide you with the comfort you need. Size: 61.8" (157cm) x 31.5" (80 cm).

61.8" x 31.5"      2869650  
US: \$39.99      CAN: \$54.99



**INDIAN MOTORCYCLE®  
HEADDRESS FRIDGE MAGNETS**

AVAILABLE FOR DELIVERY NOW

Give your fridge real Indian Motorcycle® style. Set includes two headdress shaped magnets in different colors. 3.1" (8cm) wide.

SET OF 2      2869772  
US: \$14.99    CAN: \$19.99



**INDIAN MOTORCYCLE®  
ICON FRIDGE MAGNETS**

AVAILABLE FOR DELIVERY NOW

Give your fridge real Indian Motorcycle® style. Set includes two circle magnets with different logos and colors. 2.4" (6cm) wide.

SET OF 2      2869785  
US: \$14.99    CAN: \$19.99



**INDIAN MOTORCYCLE®  
SCRIPT FRIDGE MAGNETS**

AVAILABLE FOR DELIVERY NOW

Give your fridge real Indian Motorcycle® style. Set includes two rectangle magnets in different colors. 3.1" (8cm) wide.

SET OF 2      2869786  
US: \$14.99    CAN: \$19.99



**2 IN 1 HEADDRESS STOPPER**

AVAILABLE FOR DELIVERY NOW

Enjoy wine without the troubles of too many gadgets laying around. This 2-in-1 Headdress Corkscrew and Wine Stopper will serve all your needs. Keep it at home or carry on road trips. 3.1" (7.8cm) x 5.1" (13cm).

3.1" x 5.1"      2869652  
US: \$14.99    CAN: \$19.99



**INDIAN MOTORCYCLE® BADGE LOGO  
BOTTLE OPENER**

AVAILABLE FOR DELIVERY NOW

Pop tops in style with this premium metal bottle opener. It features a stylish design, efficient bottle opener, and red and silver Indian Motorcycle® logo. 2.4" (6cm) wide x 3.3" (8.5cm) tall.

2.4" x 3.3"      2863852  
US: \$13.99    CAN: \$18.99



**INDIAN MOTORCYCLE® SLAP KOOZIE**

AVAILABLE FOR DELIVERY NOW

Keep your beverage cool and your hands warm with the Indian Motorcycle® slap koozie. 9" (23cm) wide x 3.1" (8cm) tall.

9" x 3.1"      2863959  
US: \$6.99      CAN: \$10.49



**ICON COASTERS**

AVAILABLE FOR DELIVERY NOW

Enjoy your beverage while protecting your table or bar with Indian Motorcycle® rubber coasters. Diameter: 3.5" (9cm).

SET OF 6      2869773  
US: \$29.99    CAN: \$39.99



**WALL CLOCK**

AVAILABLE FOR DELIVERY NOW

Brighten your man cave with the glow of the Indian Motorcycle® Wall Clock. This gloss black framed wall clock features a speedometer graphic which delivers precise and accurate time. Diameter: 11.8" (30cm). Depth: 2" (5cm).

11.8" DIA.      2869651  
US: \$49.99    CAN: \$67.99



## INDIAN MOTORCYCLE<sup>®</sup> CIGARS

Indian Motorcycle<sup>®</sup> and Debonaire<sup>®</sup> House have joined to capture the essence of the brand with a premium cigar line.

Blended with sought after tobaccos from the United States of America, Central America and South America, Indian Motorcycle<sup>®</sup> Cigars are exquisitely blended to give smokers of all sorts a smooth ride. Full flavored and well balanced, these cigars provide a smoking experience that is nothing short of legendary.

With new 'stay-fresh' packaging, which removes the need for humidors, Indian Motorcycle<sup>®</sup> dealers now have the opportunity to sell this premium line of cigars to riders and enthusiasts.

The cigar range is offered in individual zip seal pouches in 20 count cartons that can be easily displayed on your counter-top.

No minimum order requirements, no humidor and no hassle, dealers will receive support from Debonaire<sup>®</sup> House and their wholesale partners to set up their account and help to manage tobacco tax requirements, benefiting from competitive margins.



Indian Motorcycle<sup>®</sup> Cigars maintained at optimal temperature and humidity levels, delivered in a 3-step display carton for Indian Motorcycle<sup>®</sup> Dealerships in the U.S.A.. Nothing gets more legendary!

CONNECTICUT BROADLEAF

### **MADURO** / Box of 20 Pouches

- Sweet & Savory
- Medium in strength with a thick, rich American grown wrapper
- Binder: Dominican
- Fillers: Nicaraguan & Dominican

ECUADORIAN

### **HABANO** / Box of 20 Pouches

- Crisp & Clean
- Mild-to-Medium in strength with a rich, Colorado colored wrapper
- Binder: Dominican
- Fillers: Nicaraguan & Dominican

INDIAN MOTORCYCLE<sup>®</sup> CIGAR DEALER

1.809.276.7441

sales@debonairehouse.com

www.indiancigars.com



# MEISSENBURG DESIGNS WOOD & METAL SIGNS

Meissenburg Designs creates distinctive hand crafted, Made in America wall décor. Indian Motorcycle® aficionados will appreciate the detail and design. These beautiful art pieces make great gifts for the motorcycle rider in your life.

**Order These Signs and More:**

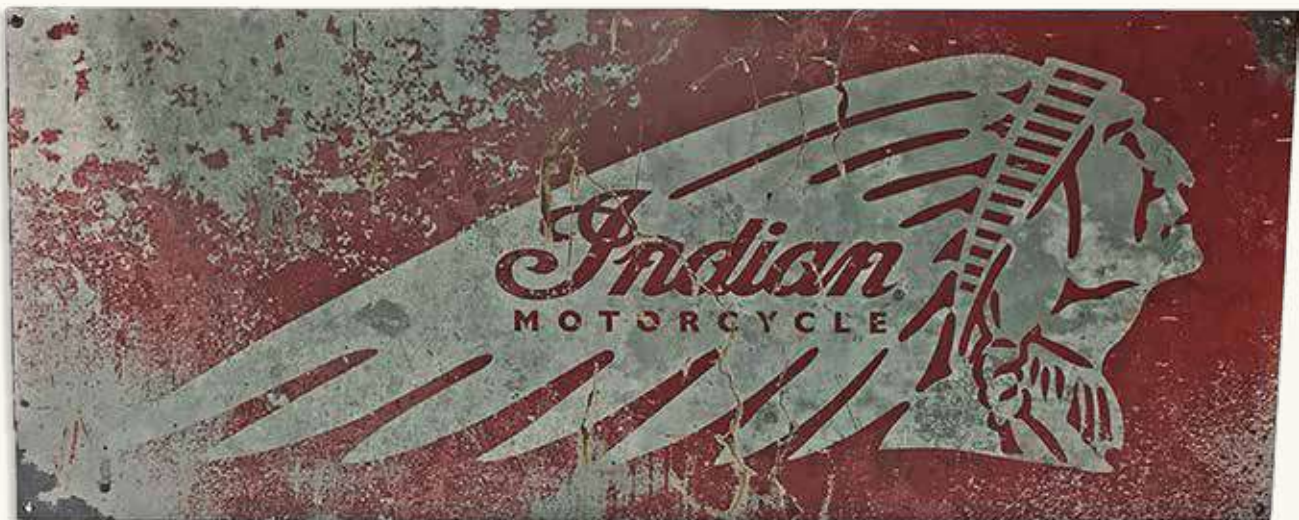
Set up your wholesale account at [www.meissenburgdesigns.com](http://www.meissenburgdesigns.com).  
sales@oldwoodsigns.com  
406.837.3005  
11890 MT HWY 83 | Bigfork, MT 59911



**INDIAN MOTORCYCLE® COMPANY LOGO SIGN (55" x 35")**  
Brick textured sign with frame, 4 nickel plated studs



**STAND-OFF DOMED GAS TANK SIGN (30" x 18")**  
Wood slatted sign with domed metal gas tank



**DISTRESSED STEEL SIGN (44" x 17")**  
Hemmed edges with corner grommets



**MARQUEE STYLE PUB SIGN (20" ROUND)**  
Printed on double sided aluminum



**ALUMINUM STAND-OFF SIGN (22" ROUND)**  
See-through 'Indian' cut-out



**RETRO WOOD SLATTED SIGN (3 SIZES)**  
Printed with retro motorcycle collage, 4 domed nickel plated studs



**WOOD SLATTED SIGN (31" x 23")**  
Printed with vintage motorcycle silhouette



**WOOD SLATTED SIGN WITH STUDS (28" x 28")**  
Black and white with 2 domed nickel plated studs

## KING BABY<sup>®</sup> JEWELRY

The Indian<sup>®</sup> by King Baby<sup>®</sup> jewelry line has been developed for bikers and motorcycle enthusiasts alike. The collection features sterling silver bracelets, pendants, rings, wallet chains, money clips, belt buckles, and key rings. King Baby<sup>®</sup> is world renowned for creating some of the most unique, highly-detailed, and most sought after premium jewelry collections. The Indian<sup>®</sup> by King Baby<sup>®</sup> line is styled with the original aesthetic of Indian Motorcycle<sup>®</sup> and handcrafted in the USA with King Baby<sup>®</sup> quality and artistry. To order please contact King Baby<sup>®</sup> directly:

Brian Bogosain (brian@kingbaby.com)  
KING BABY STUDIO  
1621 12th Street | Santa Monica, CA 90404  
Phone: 310-828-4438

View the collection at: [www.kingbabystudio.com/collections/indian](http://www.kingbabystudio.com/collections/indian)



# HOLLAND BAR STOOL CO.

Outfit your home, office, garage, and/or game room with our one of a kind Indian Motorcycle® branded product line. All of our products can be customized to include your dealer name!

**ORDERS:** Contact Sales@HollandBarStool.com for our full Indian Motorcycle® Catalog and dealer application.

## WALL DECOR

MIRRORS



15" & 19" NEON CLOCKS



CANVAS ART



## HOME GOODS

TABLE TOP & STOOL OPTIONS



LOGO PUB TABLES, CHAIRS & BAR STOOLS



## GAME ROOM & MORE

BILLIARD LIGHTS



LASER ENGRAVED FOOSBALL



LASER ENGRAVED SHUFFLEBOARD



LASER ENGRAVED POOL TABLES WITH INDIAN MOTORCYCLE® CLOTH



GRILL COVERS



SPARE TIRE COVERS



# INDIAN MOTORCYCLE® GIFTS & COLLECTIBLES



**NEW**

**INDIAN MOTORCYCLE® UMBRELLA**

ONE SIZE  
US: \$29.99    CAN: \$39.99



**NEW**

**CIGAR CUTTER**

ONE SIZE  
US: \$19.99    CAN: \$26.99



**NEW**

**SCRIPT LOGO LANYARD**

42" CIR.  
US: \$9.99    CAN: \$14.99



**NEW**

**CHECKERED LANYARD**

42" CIR.  
US: \$9.99    CAN: \$14.99



**BLACK LEATHER BELT**

AVAILABLE FOR DELIVERY NOW

S-2XL  
US: \$49.99    CAN: \$67.99



**ICON BELT BUCKLE**

AVAILABLE FOR DELIVERY NOW

3.6" WIDE  
US: \$24.99    CAN: \$32.99



**HEADDRESS BELT BUCKLE**

AVAILABLE FOR DELIVERY NOW

3.6" WIDE  
US: \$24.99    CAN: \$32.99



**MEN'S CIRCLE BUCKLE**

AVAILABLE FOR DELIVERY NOW

3.3" WIDE  
US: \$24.99    CAN: \$32.99



**NEW**

**SCRIPT LOGO RUBBER KEY RING**

1.6" DIA.  
US: \$12.99    CAN: \$17.99



**NEW**

**METAL HEADDRESS KEY RING**

5.1" WIDE  
US: \$19.99    CAN: \$26.99



**FTR™ I200 RUBBER KEY RING**

AVAILABLE FOR DELIVERY NOW

5.9" x 2.2"  
US: \$14.99    CAN: \$19.99



**ICON RUBBER KEY RING**

AVAILABLE FOR DELIVERY NOW

1.8"  
US: \$12.99    CAN: \$17.99



**HEADDRESS RUBBER KEY RING**

AVAILABLE FOR DELIVERY NOW

1.2" x 4.7"  
US: \$12.99    CAN: \$17.99



**SCRIPT LEATHER KEY RING**

AVAILABLE FOR DELIVERY NOW

1.2" x 4.7"  
US: \$19.99    CAN: \$21.99



**ICON LEATHER KEY RING**

AVAILABLE FOR DELIVERY NOW

2.2" x 3.9"  
US: \$19.99    CAN: \$26.99



**ICON LEATHER KEY RING**

AVAILABLE FOR DELIVERY NOW

2.2" x 3.5"  
US: \$19.99    CAN: \$26.99



**NEW**

**LEATHER PHOTO FRAME, BLACK**

Portrait and landscape photo frames in padded leather with glass photo cover. Features embossed script and headdress logos. Gift packaging included. 10" (25.5cm) wide x 7.9" (20cm) tall. Holds 4" (10cm) x 6" (15cm) picture.

**2 PACK**      **2860766**  
**US: \$59.99**      **CAN: \$79.99**



**NEW**

**LEATHER PHOTO FRAME, BROWN**

Portrait and landscape photo frames in leather with glass photo cover. Features embossed script and headdress logos. Gift packaging included. 10" (25.5cm) wide x 7.9" (20cm) tall. Holds 4" (10cm) x 6" (15cm) picture.

**2 PACK**      **2860767**  
**US: \$59.99**      **CAN: \$79.99**



**LOGO PATCH**

AVAILABLE FOR DELIVERY NOW

**4.3" WIDE**      **2863861**  
**US: \$6.99**      **CAN: \$10.49**



**COLOR HEADDRESS PATCH**

AVAILABLE FOR DELIVERY NOW

**4.5" WIDE**      **2863864**  
**US: \$6.99**      **CAN: \$10.49**



**CIRCLE ICON PATCH**

AVAILABLE FOR DELIVERY NOW

**3.1" WIDE**      **2863862**  
**US: \$6.99**      **CAN: \$10.49**



**INDIAN® SPORT SCOUT®  
 1:12 SCALE**

AVAILABLE FOR DELIVERY NOW

**1:12 SCALE**      **2863683**  
**US: \$19.99**      **CAN: \$26.99**



**TANK BADGE PINS**

AVAILABLE FOR DELIVERY NOW

**1.77cm WIDE**  
**A SCOUT®**      **2869780**  
**B CHIEF® CLASSIC**      **2869782**  
**C SCOUT® SIXTY**      **2869781**  
**D ROADMASTER®**      **2869783**  
**US: \$6.99**      **CAN: \$10.49**



**INDIAN MOTORCYCLE®  
 LOGO PIN**

AVAILABLE FOR DELIVERY NOW

**1.2" WIDE**      **2863673**  
**US: \$5.99**      **CAN: \$8.99**



**INDIAN MOTORCYCLE®  
 CIRCLE ICON PIN**

AVAILABLE FOR DELIVERY NOW

**1" WIDE**      **2863674**  
**US: \$5.99**      **CAN: \$8.99**



**INDIAN MOTORCYCLE®  
 HEADDRESS PINS**

AVAILABLE FOR DELIVERY NOW

**1.6" WIDE**  
**BROWN**      **2863676**  
**COLOR**      **2863675**  
**US: \$5.99**      **CAN: \$8.99**



**FTR™ 1200 STICKER SET**

AVAILABLE FOR DELIVERY NOW

Not for motorcycle bodywork.

**13.25" x 8.5"**      **2869778**  
**US: \$12.99**      **CAN: \$17.99**



**INDIAN MOTORCYCLE®  
 STICKER SET**

AVAILABLE FOR DELIVERY NOW

Not for motorcycle bodywork.

**13.25" x 8.5"**      **2863865**  
**US: \$12.99**      **CAN: \$17.99**

# INDIAN MOTORCYCLE® POLISHES



## NO RINSE WASH & SHINE

AVAILABLE FOR DELIVERY NOW

This environmentally friendly product offers a fast, convenient way to wash a motorcycle with absolutely no rinsing. Simply add 1 ounce to a 2 gallon bucket of water, soak an Indian® Microfiber Towel in the bucket and wash a section at a time. This unique formula encapsulates the dirt, lifting it away from the surface allowing you to finish by simply drying with a clean Indian® Microfiber Towel. No streaks, smears or scratches.

SIZE:	PART #:	US:	CAN:
16 OZ/ 12PK	2863892	\$191.88	\$263.88
1 GAL/ 2PK	2863899	\$99.98	\$135.98



## INSTANT DETAILER & SHINE

AVAILABLE FOR DELIVERY NOW

Detail in minutes with Instant Detailer and Shine. Spray it on a microfiber towel or directly on the bike to remove dirt and bugs. Use on windshields, bodywork and chrome. Safe for use on plexiglas, lexan®, acrylic, or factory coated windshields.

SIZE:	PART #:	US:	CAN:
16 OZ/ 12PK	2863893	\$191.88	\$263.88
1 GAL/ 2PK	2863900	\$111.98	\$151.98



## ENGINE ENHANCER

AVAILABLE FOR DELIVERY NOW

Engine Enhancer is specially designed to preserve and restore the beauty of an engine and related parts. It provides a durable, factory finish without greasy or oily residue.

SIZE:	PART #:	US:	CAN:
16 OZ/ 12PK	2863894	\$191.88	\$263.88
1 GAL/ 2PK	2863901	\$99.98	\$135.98



## WHITE WALL & WHEEL CLEANER

AVAILABLE FOR DELIVERY NOW

This non-corrosive cleaner will safely dissolve and remove grease, oil, road dirt, and brake dust from motorcycle tires and wheels. It is excellent for use on white wall tires, and is a biodegradable cleaner that is safe for all wheels, such as chrome, aluminum, clear or powder-coated wheels.

SIZE:	PART #:	US:	CAN:
16 OZ/ 12PK	2863895	\$191.88	\$263.88
1 GAL/ 2PK	2863902	\$99.98	\$135.98



## SPRAY WAX & PROTECTANT

AVAILABLE FOR DELIVERY NOW

Spray Wax & Protectant can be used on any clean surface, wet or dry, and it will produce a durable, high-gloss shine with minimal effort. It contains no petroleum distillates or silicone.

SIZE:	PART #:	US:	CAN:
16 OZ/ 12PK	2863896	\$191.88	\$263.88
1 GAL/ 2PK	2863903	\$99.98	\$135.98



## SUPER PLUSH M/F TOWEL-TWIN PACK

AVAILABLE FOR DELIVERY NOW

The only towels a rider should use on a motorcycle, these 100% microfiber towels won't scratch any surface. They are extremely plush, can be used with chemicals and cleaners, and are machine washable. Sold in packs of two towels.

SIZE:	PART #:	US:	CAN:
TWIN PK/ 24PK	2863897	\$287.76	\$407.76



## TRAVEL PACK

AVAILABLE FOR DELIVERY NOW

A rider can keep an Indian Motorcycle® looking great while traveling by carrying this Travel Pack. It includes 4 oz. bottles of Bike Wash Concentrate, Spray & Wipe Instant Detailer, Liquid Spray Wax, and Leather, Vinyl & Rubber Conditioner, plus a plush microfiber towel.

SIZE:	PART #:	US:	CAN:
12PK	2863898	\$359.88	\$479.88





**NEW**

### UNIFORM SHIRT, BLACK

Dealer uniform shirt with embroidered Indian Motorcycle® logos on the chest and back. For dealer use only, not for retail. No discount item.

Fabric: 65% polyester, 35% cotton  
Graphics: Embroidery on front and back

<b>XS-3XL</b>	<b>2860809</b>
<b>US: \$44.99</b>	<b>CAN: \$59.99</b>



### SUNGLASSES DISPLAY

AVAILABLE FOR DELIVERY NOW

Lockable display unit with a wooden base and metal structured body. Fits up to 6 pairs of sunglasses and comes with two keys. No sunglasses included. Easy to assemble. Size: 8" (20 cm) W x 8" (20 cm) D x 24.5" (62 cm) H.

<b>FITS 6 PAIRS</b>	<b>2867468</b>
<b>US: \$89.99</b>	<b>CAN: \$119.99</b>



### SHOWBOARD FOR PINS

AVAILABLE FOR DELIVERY NOW

Display comes with a space for 48 pins. (For dealer use only.)

<b>13" x 8.7"</b>	<b>2869784</b>
<b>US: \$12.99</b>	<b>CAN: \$17.99</b>

### HELMET BOX (NOT PICTURED)

AVAILABLE FOR DELIVERY NOW

<b>SMALL</b>	<b>2868991</b>
<b>US: \$1.00</b>	<b>CAN: \$1.50</b>
<b>LARGE</b>	<b>2868992</b>
<b>US: \$1.00</b>	<b>CAN: \$1.50</b>

### PARTS BAG (NOT PICTURED)

AVAILABLE FOR DELIVERY NOW

Order in multiples of 10.

<b>M (15.5" x 17.5")</b>	<b>2863991</b>
<b>US: \$0.09</b>	<b>CAN: \$0.15</b>
<b>L (27.5" x 19.5")</b>	<b>2863994</b>
<b>US: \$0.14</b>	<b>CAN: \$0.22</b>

### CASUALWEAR HANGER (NOT PICTURED)

AVAILABLE FOR DELIVERY NOW

Order in multiples of 10.

<b>ONE SIZE</b>	<b>2863397</b>
<b>US: \$1.00</b>	<b>CAN: \$1.50</b>



**GOLD AVIATOR SUNGLASSES**  
PAGE 70

**RETRO 2 GLOVE**  
PAGE 23

When you're enjoying your new Indian Motorcycle®, always wear a helmet and protective eyewear and clothing and insist that your passenger do the same. Ride within the limits of the law and your own abilities. Read and understand your owner's manual. Never ride under the influence of drugs or alcohol. Indian Motorcycle® strongly recommends that all riders take a Motorcycle Safety Foundation® Rider Course. For a course near you, call 1-800-446-9227. Protect riders' rights by joining the American Motorcyclist Association. For the name of your nearest Indian Motorcycle® dealership, call 1-800-POLARIS or visit our website at IndianMotorcycle.com. All riders are professionals and on a closed course. To the best knowledge of Polaris Industries Inc., the specifications, descriptions, and illustrative material contained herein are accurate as of the date this catalog was approved for printing. Indian Motorcycle® reserves the right, without prior notice, to discontinue at any time at its discretion any of the items herein or change specifications or designs without incurring any obligation to the customer. All items are subject to availability and prior sales by our dealers. Location photography by Todd Williams Photography. Studio Photography by SAGA Marketing. Catalog design by SAGA Marketing. Printed in the USA.

Indian® and Indian Motorcycle® are registered trademarks of Indian Motorcycle International, LLC. 3M® is a registered trademark of 3M Company. American Flat Track™ is a trademark of Daytona Motorsports Group. Bluetooth® is a registered trademark of Bluetooth Sig, Inc. Debonaire® is a registered trademark of Durfort Holdings, S.A. King Baby™ is a registered trademark of King Baby Studio, Inc. Jack Daniel's® is a registered trademark of Jack Daniel's Properties, Inc. Lexan® is a registered trademark of Sabic Innovative Plastics IP B.V. NuShoe® is a registered trademark of NuShoe, Inc. Pinlock® is a registered trademark of Pinlock Patent B.V. besloten vennootschap (b.v.). Red Wing® and Red Wing Shoes® are registered trademarks of Red Wing Shoe Company, Inc. Velcro® is a registered trademark of Velcro Industries B.V. Ltd Co. Netherlands. Vibram® is a registered trademark of Vibram S.P.A. Corporation Italy. YKK® is a registered trademark of YKK Corporation.

AMERICA'S  
FIRST

EST.



MOTORCYCLE  
COMPANY™



INDIAN MOTORCYCLE®

SPRING/SUMMER 2020

APPAREL & GIFTS

© 2019 Indian Motorcycle®  
Part #: 2860839

