

---

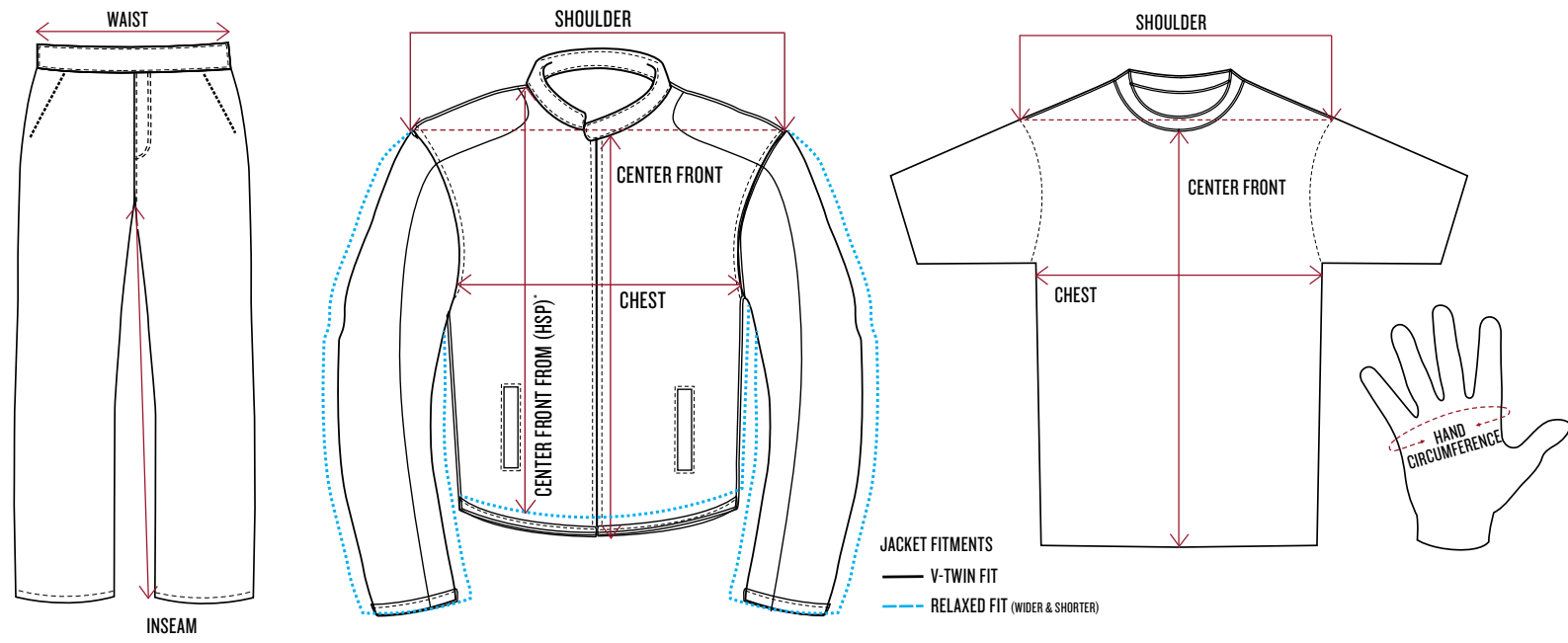
# APPAREL & GIFTS

---



SPRING/SUMMER

2019



MEN'S V-TWIN FIT JACKETS												
SIZE	CHEST		SHOULDER		LEATHER CENTER FRONT		TEXTILE CENTER FRONT		BECKMAN JKT CENTER FRONT		SPRINGFIELD 2 & 1901 JKT CENTER FRONT	
	IN	CM	IN	CM	IN	CM	IN	CM	IN	CM	IN	CM
XS	40.2 - 41.7	102 - 106	20.1	51	21.3	54	21.7	55	-	-	-	-
S	43.3 - 44.9	110 - 114	20.5	52	21.5	55	22	56	21.7	55	22	56
M	46.5 - 48	118 - 122	20.9	53	22	56	22.5	57	22	56	22.5	57
L	49.6 - 51.2	126 - 130	21.3	54	22.5	57	23	58	22.5	57	23	58
XL	53.5 - 55.1	136 - 140	22	56	23	59	23.5	60	23	59	23.5	60
XL-TALL	53.5 - 55.1	136 - 140	22.2	56.5	-	-	-	-	24.8	63	25.2	64
2XL	57.5 - 59	146 - 150	22.5	58	24	61	24.4	62	24	61	24.4	62
2XL-TALL	57.5 - 59	146 - 150	23	58.5	-	-	-	-	25.6	65	26	66
3XL	61.4 - 63	156 - 160	23.5	60	24.5	63	25.2	64	24.8	63	25.2	64
3XL-TALL	61.4 - 63	156 - 160	24	60.5	-	-	-	-	26.4	67	26.8	68
4XL	65.4 - 66.9	166 - 170	24.4	62	25.6	65	26	66	25.6	65	26	66
5XL	69.3 - 70.9	176 - 180	25.2	64	26.5	67	26.8	68	26.4	67	26.8	68

Tall sizes available on Beckman Jacket, Springfield Mesh 2 Jacket, & 1901 Jacket for sizes XL-3XL. Sleeve length & body length increase by 4cm.

MEN'S V-TWIN FIT VESTS						
SIZE	CHEST		SHOULDER		CENTER FRONT	
	IN	CM	IN	CM	IN	CM
S	42	106	15	38	13.2	33.5
M	45	114	15.4	39	14.4	36.5
L	48	122	15.7	40	14.8	37.5
XL	52	132	16.5	42	15.6	39.5
2XL	56	142	17.3	44	16.3	41.5
3XL	60	152	18.1	46	17.1	43.5
4XL	64	162	18.9	48	17.9	45.5
5XL	68	172	19.7	50	18.7	47.5

MEN'S RELAXED FIT JACKETS						
SIZE	CHEST		SHOULDER		CENTER FRONT FROM HSP*	
	IN	CM	IN	CM	IN	CM
S	50	127	20.4	51.8	24.5	62
M	52.5	133.3	21	53.3	25	63.5
L	58	147.3	22	55.9	26	65.5
XL	62.5	158.8	23	58.4	26.5	67
2XL	66	167.6	24	61	27	69
3XL	68	172.7	24.5	62.2	27.5	70

\*High Shoulder Point (HSP). Relaxed fit is wider in the shoulders, body and sleeve and shorter in body length than the V-Twin fit.

MEN'S FOOTWEAR				
USA	EU	UK	IN	CM
7	39	6	9.8	25
8	41	7	10.2	26
9	42	8	10.6	27
10	43	9	11	28
11	44.5	10	11.4	29
12	46	11	11.8	30
13	47	12	12.2	31

WOMEN'S FOOTWEAR				
USA	EU	UK	IN	CM
5	35	2.5	8.7	22
6	36	3.5	9	23
7	37.5	4.5	9.4	24
8	38.5	5.5	9.8	25
9	40	6.5	10.2	26
10	41.5	7.5	10.6	27
11	42.5	8.5	11	28

MEN'S CHAPS					
SIZE	WAIST			INSEAM	
	IN	CM	IN	CM	IN
M	35	89	33	84.5	
L	38	97	33	84.5	
XL	41	105	33	84.5	
2XL	44.5	113	33	84.5	
3XL	47.5	121	33	84.5	
4XL	51	129	33	84.5	
5XL	54	137	33	84.5	

MEN'S GLOVES		
SIZE	HAND CIRCUMFERENCE	
	IN	CM
S	8.1	20.65
M	8.4	21.45
L	8.8	22.25
XL	9.1	23.05
2XL	9.4	23.85
3XL	9.7	24.65
4XL	10	25.45

WOMEN'S V-TWIN FIT JACKETS						
SIZE	CHEST		SHOULDER		CENTER FRONT	
	IN	CM	IN	CM	IN	CM
XS	37	94	17	43	19.7 - 22	50 - 56
S	39.5	100	17.3	44	20.5 - 22.8	52 - 58
M	41.5	106	17.7	45	21.3 - 23.6	54 - 60
L	44	112	18.1	46	22 - 24.4	56 - 62
XL	47	120	18.9	48	22.8 - 25.2	58 - 64
2XL	50.4	128	19.7	50	23.6 - 26	60 - 66
3XL	53.5	136	20.5	52	24.4 - 26.8	62 - 68
1W	48.4	123	19.3	49	22.8	58
2W	51.6	131	20.1	51	23.6	60
3W	54.7	139	20.9	53	24.4	62

WOMEN'S V-TWIN FIT VESTS						
SIZE	CHEST		SHOULDER		CENTER FRONT	
	IN	CM	IN	CM	IN	CM
XS	34.5	88	10.2	26	11.2	28.5
S	37	94	10.6	27	12	30.5
M	39.5	100	11	28	12.8	32.5
L	42	106	11.4	29	13.6	34.5
XL	45	114	12.2	31	14.4	36.5
2XL	48	122	13	33	15.16	38.5
3XL	51	130	13.8	35	15.9	40.5
1W	46	117	12.6	32	14.4	36.5
2W	49	125	13.4	34	15.2	38.5
3W	52.5	133	14.2	36	15.9	40.5

WOMEN'S CHAPS				
SIZE	WAIST		INSEAM	
	IN	CM	IN	CM
S	35.5	90	33	83.5
M	37	94	33	83.5
L	40	102	33	83.5
XL	43	110	33	83.5
2XL	46.5	118	33	83.5
3XL	50	126	33	83.5
4XL	53	134	33	83.5
5XL	56	142	33	83.5

WOMEN'S GLOVES		
SIZE	HAND CIRCUMFERENCE	
	IN	CM
S	7.2	18.3
M	7.5	19.1
L	7.8	19.9
XL	8.2	20.7

RAINSUIT- JACKET						
SIZE	CHEST		SHOULDER		CENTER FRONT (INCLUDES COLLAR)	
	IN	CM	IN	CM	IN	CM
XS	45	114	21.5	54	26.5	67
S	48	122	21.5	55	26.8	68
M	51.2	130	22	56	27.2	69
L	54.5	138	22.5	57	27.6	70
XL	58.3	148	23	59	28.3	72
2XL	62	158	24	61	29.1	74
3XL	66.1	168	24.5	63	29.9	76
4XL	70.1	178	25.6	65	30.7	78
5XL	74	188	26.5	67	31.5	80

RAINSUIT- PANTS				
SIZE	WAIST (RELAXED)		INSEAM	
	IN	CM	IN	CM
XS	33	84	31.9	81
S	34.5	88	32.3	82
M	36.2	92	32.7	83
L	39.4	100	33.3	84.5
XL	42.5	108	34	86
2XL	45.5	116	34.5	87.5
3XL	50	124	35	89
4XL	52	132	35.6	90.5
5XL	55.1	140	36.2	92

HELMETS			
SIZE	HAT SIZE	IN	CM
XS	6 3/4	21.3	54
S	6 7/8 - 7	21.7 - 22	55-56
M	7 1/8 - 7 1/4	22.4 - 22.8	57-58
L	7 3/8 - 7 1/2	23.2 - 23.6	59-60
XL	7 5/8 - 7 3/4	24 - 24.4	61-62
2XL	7 7/8 - 8	24.8 - 25.2	63-64
3XL	8 1/8 - 8 1/4	25.6 - 26	65-66
4XL	8 3/8 - 8 1/2	26.4 - 26.8	67-68

MEN'S T-SHIRTS & POLOS						
SIZE	CHEST		SHOULDER		CENTER FRONT	
	IN	CM	IN	CM	IN	CM
S	37	94	18.5	46.5	24	60.5
M	41	104	19	48	24	61.5
L	45	114	19.5	49.5	24.5	62.5
XL	49	124	20	51	25	63.5
2XL	53	134	20.5	52.5	25.5	64.5
3XL	56.5	144	21.5	54	26	65.5
4XL	62.5	159	22	56.25	26.5	67
5XL	68.5	174	23	58.5	27	68.5

MEN'S SHIRTS & ZIP THRU								
SIZE	CHEST		SHOULDER		CENTER FRONT		ZIP THRU CENTER FRONT	
	IN	CM	IN	CM	IN	CM	IN	CM
S	40	102	19	48.5	27	69	23.5	59.5
M	44	112	19.5	50	27.5	70	24	60.5
L	48	122	20.5	51.5	28	71	24	61.5
XL	52	132	21	53	28.5	72	24.5	62.5
2XL	56	142	21.5	54.5	28.5	73	25	63.5
3XL	60	152	22	56	29	74	25.5	64.5

MEN'S 1901 FASHION FIT T-SHIRTS						
SIZE	CHEST		SHOULDER		CENTER FRONT	
	IN	CM	IN	CM	IN	CM
S	39	99	17	43	23.5	59.5
M	41	104	17.5	44.5	24.3	62
L	43	110	18	46	25.2	64
XL	46	117	18.7	47.5	26.1	66.5
2XL	49	124	19.5	49.5	27	68.5
3XL	52	132	20.3	51	27.9	70.8

A closer fit with slimmed down shoulder and sleeve. Chest width is larger than our other tees, however fit narrows from chest, to waist, to hem, giving an overall slimmer fit.

WOMEN'S SHIRTS						
SIZE	CHEST		SHOULDER		CENTER FRONT	
	IN	CM	IN	CM	IN	CM
XS	34.6	88	14.7	37.5	23.6	60
S	37	94	15.3	39	24	61
M	39.3	100	15.9	40.5	24.4	62
L	41.7	106	16.5	42	24.8	63
XL	44.8	114	17.3	44	25.1	64
2XL	48	122	18.1	46	25.5	65
3XL	51.1	130	18.8	48	25.9	66

WOMEN'S HOODIES & ZIP THRU						
SIZE	CHEST		SHOULDER		CENTER FRONT	
	IN	CM	IN	CM	IN	CM
XS	35.4	90	17.1	43.5	22.4	57
S	37.7	96	17.7	45	22.6	58
M	40.1	102	18.5	46.5	23.2	59
L	42.5	108	18.8	48	23.6	60
XL	45	116	19.7	50	24	61
2XL	48.8	124	20.5	52	24.4	62
3XL	51.9	132	21.5	54	24.8	63

WOMEN'S T-SHIRTS- RELAXED FIT								
SIZE	CHEST		WAIST		SHOULDER		CENTER BACK	
	IN	CM	IN	CM	IN	CM	IN	CM
XS	33.8	86	30.3	77	15.3	39	23.6	60
S	36.2	92	32.7	83	1			





NEW

PHOENIX JACKET, BROWN



**VENTED** The popular Phoenix Jacket is offered here in a second colorway. Ventilation zips on the sleeves and back keep things cool in warmer temperatures. Contrast stitch detailing features across the sleeves and lower body.



**FEATURES**

0.8-0.9mm leather shell  
Fixed lining  
Removable liner- quilted vest  
3 exterior & 1 interior pocket  
Snap cuffs  
V-Twin Fit  
CE certified; EU Regulation 2016/425  
prEN 17092-4:2018

**ADDITIONAL FEATURES**

Removable CE protectors in shoulders & elbows (EN 1621-1:2012); action back; antique brass zippers; embossed script logo at back neck; snap down collar; adjustable tabs at waist and hip

**XS-3XL**  
**US: \$449.99**

**2868917**  
**CAN: \$589.99**

PHOENIX JACKET



**VENTED** A modern style leather riding jacket with bold metal zip detailing. Ventilation zips on the sleeves and back are great for warmer temperatures. Subtle stitch detailing features across the sleeves and lower body.



**FEATURES**

0.9-1.0mm leather shell  
Fixed lining  
Removable liner- quilted vest  
3 exterior & 1 interior pockets  
Snap cuffs  
V-Twin Fit  
CE certified; EU Regulation 2016/425  
prEN 17092-4:2018

**ADDITIONAL FEATURES**

Removable CE protectors in shoulders & elbows (EN 1621-1:2012); action back; antique brass zippers; embossed script logo at back neck; snap down collar; adjustable tabs at waist & hip

**XS-3XL**  
**US: \$449.99**

**2868901**  
**CAN: \$589.99**

TALL SIZES

BECKMAN JACKET



**VENTED** A timeless leather riding jacket in jet black leather. The self colored stripes and angular panel lines are modern and masculine. Hidden vents help with airflow on warm days and a removable quilted liner offers insulation on cooler rides.



**FEATURES**

1.0-1.2mm leather shell  
Fixed lining- airmesh  
Removable liner- quilted vest  
Hidden ventilation panels on arms & back  
Reflective piping on back  
2 exterior & 1 internal pocket  
Side adjust zippers & snap wrist cuffs  
V-Twin Fit  
CE certified; EU Regulation 2016/425  
prEN 17092-4:2018

**ADDITIONAL FEATURES**

Removable CE protectors in shoulders & elbows (EN 1621-1:2012); action back; antique brass zippers; embroidered logo on front; applique & embroidered branding on back; snap down collar

**S-5XL, XLT-3XLT**  
**US: \$399.99**

**2869635**  
**CAN: \$519.99**





## LIBERTY JACKET

VENTED

This Made in USA horsehide jacket is everlasting. Horsehide is a very dense, durable leather which is non porous (non absorbent) and has a natural ability to repel moisture. It has a removable quilted liner for cooler rides and lacing at the sides for adjustability.

### FEATURES

1.2-1.4mm thick horsehide leather shell  
Fixed lining- airmesh  
Removable liner- quilted vest  
Hidden ventilation panels on front & back  
2 exterior & 2 interior pockets  
Side lace adjustment & zippered cuffs  
Relaxed Fit

### ADDITIONAL FEATURES

Removable CE protectors in shoulders & elbows; action back; embroidered logo on back; headdress patch on right sleeve; oval quality patch on left sleeve

**MADE IN U.S.A**

**S-3XL** **2867998**  
**US: \$849.99** **CAN: \$1,104.99**



## BENJAMIN JACKET

VENTED

A vintage look soft brown leather riding jacket with on trend patch pockets, shoulder panels and buckle collar. This jacket features vents for cooling and removable plaid liner for cooler days.

### FEATURES

0.9-1.0mm thick dull leather shell  
Fixed lining- airmesh  
Removable liner- quilted plaid vest  
Hidden ventilation panels on arms & back  
6 exterior pockets  
Powerstretch side panels & snap cuffs  
V-Twin Fit

### ADDITIONAL FEATURES

Removable CE protectors in shoulders and elbows; action back; antique brass snaps; script logo embroidered on back; circle headdress patch on left sleeve; buckle collar

**S-5XL** **2863703**  
**US: \$499.99** **CAN: \$649.99**

## CLASSIC JACKET 2



CASUAL

A true Indian Motorcycle® classic. This timeless style jacket features a slightly worn dark brown leather. Snap down collar stops any flapping when riding. The jacket also features a removable quilted plaid liner for cooler days.

### FEATURES

1.2-1.4mm thick leather shell  
Fixed lining- plaid  
Removable liner- quilted plaid vest  
2 exterior, 1 chest & 1 interior pockets  
Zippered side expansion panels; snap wrist adjustment tabs  
V-Twin Fit  
CE certified; Directive 89/686/CE V06.  
French Protocol Level 1

### ADDITIONAL FEATURES

Removable CE protectors in shoulders & elbows; snap down collar; antique brass zippers; embroidered script logo on front left; applique/embroidered script logo on back; circle headdress patch on right sleeve

**S-5XL** **2867669**  
**US: \$499.99** **CAN: \$649.99**



## OUTSIDER VEST

CASUAL

This black leather vest is a modern classic. It features secure chest pockets with flaps and zip adjustable sides.

### FEATURES

0.9-1.0mm thick leather shell  
Fixed lining  
4 exterior & 1 interior pocket  
Zip side expansion panels  
V-Twin Fit

### ADDITIONAL FEATURES

Antique brass zip; stitch detailing on front; embroidered front logo; applique logo on back

**S-5XL** **2868674**  
**US: \$229.99** **CAN: \$259.99**



## INDIAN MOTORCYCLE® VEST 2

CASUAL

This black leather vest with laced side seams is a traditional staple for the cruiser rider. The laces can be adjusted to allow expansion where needed. The logos are a combination of embroidery and leather applique.

### FEATURES

1.0-1.2mm thick dull leather shell  
Fixed lining  
2 exterior & 1 interior pockets  
V-Twin Fit

### ADDITIONAL FEATURES

Antique brass snaps; lace up sides; embroidered front logo; applique & embroidered logo on back

**S-5XL** **2863711**  
**US: \$149.99** **CAN: \$194.99**



## INDIAN MOTORCYCLE® MEN'S BROWN LEATHER CHAPS

In brown leather that matches the Benjamin Jacket and Brown Leather Vest. There is adjustability across the waist and thigh with stretchable heavy spandex. Additional adjustability is provided by two full length zippers (to make the leg looser or tighter) and raw edge hems which can be cut to size.

### FEATURES

0.9-1.0mm thick dull leather shell  
Fixed lining  
3 exterior pockets  
Lacing at back; heavy spandex on thigh; double zip outseam

### ADDITIONAL FEATURES

Antique brass zippers & snaps; raw edge hem; embroidered script logo on front

**M-3XL** **2866290**  
**US: \$279.99** **CAN: \$359.99**



## INDIAN MOTORCYCLE® MEN'S CHAPS

These black leather chaps offer great adjustability across waist and thigh with stretchable heavy spandex, 2 full length zippers to make the leg looser or tighter and raw edge hems which can be cut to size.

### FEATURES

1.0-1.2mm thick dull leather shell  
Fixed lining  
3 exterior pockets  
Lacing at back; heavy spandex on thigh; double zip outseam

### ADDITIONAL FEATURES

Antique brass zippers & snaps; raw edge hem; embroidered script logo on front

**M-5XL** **2863712**  
**US: \$249.99** **CAN: \$324.99**





**DRIFTER MESH JACKET** CE

**MESH** A jacket for warmer days. The mesh panels allow maximum air flow. There are leather panels on the elbows. A removable lightweight windproof liner offers insulation when temperatures drop.

**FEATURES**

Polyester mesh with leather elbow panels  
Fixed lining- airmesh  
Windproof removable liner  
2 exterior & 1 interior pocket  
Side adjustment zips, snap collar & wrists  
V-Twin Fit  
CE certified; Directive 89/686/EEC  
prEN 17092-4:2017.  
Achieved classification 'A'

**ADDITIONAL FEATURES**

Removable CE protectors in shoulders and elbows (EN 1621-1:2012); action back; antique brass snaps; script logo embroidered on chest; embroidered and applique logo on back; headdress patch on right sleeve

**S-3XL**      **2868883**  
**US: \$199.99**      **CAN: \$259.99**



**NEW** // TALL SIZES  
**SPRINGFIELD MESH 2 JACKET** CE

**MESH** A slick update on the original Springfield Mesh jacket for riding in warmer climates. Mesh panels allow air to flow freely helping the rider stay cool. There are leather powerstretch panels on the elbows for flexibility. A removable lightweight windproof liner offers insulation when temperatures drop.

**FEATURES**

Fixed lining- airmesh  
Windproof removable liner- long sleeve  
2 exterior & 2 interior pockets  
Powerstretch elbow panels; zip side adjusters; snap cuff  
V-Twin Fit  
CE certified; EU Regulation 2016/425  
prEN 17092-4:2018

**ADDITIONAL FEATURES**

Removable CE protectors in shoulders & elbows (EN 1621-1:2012); action back; 3M® reflective piping; patch on chest; script logo embroidered & applique on back; headdress patch on right sleeve; American flag patch on left sleeve

**S-5XL, XLT-3XL**      **2868916**  
**US: \$219.99**      **CAN: \$284.99**



**SHADOW MESH JACKET** CE

**MESH** This is a full mesh riding jacket. Full mesh construction offers maximum air flow for the hot days. A removable lightweight windproof liner gives insulation for the cold days.

**FEATURES**

Polyester mesh shell  
Fixed lining- airmesh  
Windproof removable liner  
2 exterior & 1 interior pocket  
Side adjustment zips & snap cuffs  
V-Twin Fit  
CE certified; Directive 89/686/EEC  
prEN 17092-4:2017.  
Achieved classification 'A'

**ADDITIONAL FEATURES**

Removable CE protectors in shoulders & elbows (EN 1621-1:2012); action back; antique brass zippers on waist pockets; leather patch on front & back; circle leather patch on right sleeve

**S-3XL**      **2868889**  
**US: \$189.99**      **CAN: \$249.99**



**FLINT JACKET** CE

**VENTED** A water resistant jacket featuring contrast colored panels and a removable quilted liner to keep the wearer warm and dry. Ventilation panels allow cooling airflow on warmer days.

**FEATURES**

Fixed Lining- airmesh  
Removable liner- quilted vest  
Hidden ventilation panels on arms & back  
Reflective piping on back  
2 exterior & 1 interior pocket  
Side adjust zippers & snap wrist cuffs  
V-Twin Fit  
CE certified; EU Regulation 2016/425  
prEN 17092-4:2018

**ADDITIONAL FEATURES**

Removable CE protectors in shoulders & elbows (EN 1621-1:2012); action back; embroidered logo on front; applique & embroidered branding on back; snap down collar; circle headdress patch on right sleeve

**S-5XL**      **2869636**  
**US: \$259.99**      **CAN: \$339.99**



**LIGHTWEIGHT MESH JACKET** CE

**MESH** Retro styled full mesh riding jacket. Bold branding on back and front demonstrates Indian Motorcycle® as your brand of choice. Full mesh construction offers maximum air flow for the warmest of days. A removable lightweight windproof liner offers insulation on cool mornings.

**FEATURES**

Fixed lining- airmesh  
Windproof removable liner- long sleeve  
2 exterior & 1 interior pockets  
Zippered side expansion panels; snap cuff  
V-Twin Fit  
CE certified; Directive 89/686/EEC  
prEN 17092-4:2017.  
Achieved classification 'A'

**ADDITIONAL FEATURES**

Removable CE protectors in shoulders & elbows (EN 1621-1:2012); action back; snap fasten collar; script logo embroidered & applique on front; embroidered and applique logo on back; circle headdress patch on right sleeve

**S-3XL**      **2868885**  
**US: \$189.99**      **CAN: \$249.99**



**FLAT TRACK JACKET** CE

**VENTED** A racing inspired jacket featuring colored panels and a removable quilted liner to keep the wearer warm and dry.

**FEATURES**

Fixed lining- airmesh  
Removable liner- quilted vest  
2 exterior & 1 interior pockets  
Snap cuffs  
V-Twin Fit  
CE certified; EU Regulation 2016/425  
prEN 17092-4:2018

**ADDITIONAL FEATURES**

Removable CE protectors in shoulders & elbows (EN 1621-1:2012); action back; snap down collar; contrast stripe detailing across sleeves; adjustable side tabs; embroidered & applique branding on front; American flag patch on left sleeve; Motor Oil patch on right sleeve

**XS-3XL**      **2869638**  
**US: \$249.99**      **CAN: \$324.99**





**NEW**  
**SACRAMENTO JACKET** CE

**WAXED COTTON** A waxed cotton jacket featuring a slanted left pocket and asymmetric closure. Vents in the sleeves and back allow greater airflow on warmer rides. This has a removable quilted lining and removable protectors.

**FEATURES**  
Fixed lining  
Removable liner- quilted vest  
3 exterior & 1 interior pockets  
Adjustable waist tabs; snap cuffs  
V-Twin Fit  
CE certified; EU Regulation 2016/425  
prEN 17092-4:2018

**ADDITIONAL FEATURES**  
Removable CE protectors in shoulders & elbows (EN 1621-1:2012); gunmetal zippers; snap collar; action back; stitched detailing on back & shoulders; woven patch at back neck

**XS-3XL**      **2868918**  
**US: \$299.99**    **CAN: \$389.99**



**SHIFT JACKET** CE

**WAXED COTTON** A modern, utility look waxed cotton jacket with military inspired details around the shoulders, collar and underarms. Secure pocket details on the front add style and practicality.

**FEATURES**  
Fixed lining  
Removable liner- quilted vest  
4 exterior & 2 interior pockets  
Zippered side expansion panels; snap cuffs  
V-Twin Fit  
CE certified; EU Regulation 2016/425  
prEN 17092-4:2018

**ADDITIONAL FEATURES**  
Removable CE protectors in shoulders & elbows; antique brass zippers; hidden snap down collar; action back; leather patch on front; woven patch at back neck

**S-5XL**      **2868996**  
**US: \$299.99**    **CAN: \$389.99**



**WAXED COTTON JACKETS**

Some of the earliest motorcycle riding jackets were made using waxed cotton. Not only does waxed cotton look great, it is also very durable and practical for motorcycle riding. The waxed finish to the outer fabric gives a water repellent finish, allowing rain water to bead away, while the fabric is lightweight for year-round riding.





**NEW**  
**RETRO BOMBER JACKET**

**CASUAL** This is a vintage style casual jacket with a branded patch on the chest and striped trim details.

**FEATURES**  
Fixed lining  
2 exterior & 1 interior pockets  
Rib knit collar, cuffs & hem  
V-Twin Fit

**ADDITIONAL FEATURES**  
Zip close waist pockets; woven logo patch on chest

**XS-3XL**      **2868919**  
**US: \$139.99**    **CAN: \$179.99**



**INDIAN MOTORCYCLE®  
COLOR BLOCK RAINSUIT - UNISEX**

**WATERPROOF** A two piece jacket and pant rainsuit constructed of waterproof and breathable nylon. Every seam is taped to ensure you stay dry in the rain. Designed to be worn over your leathers this is a large fit. The pant has removable suspenders.

**FEATURES**  
Fixed lining- airmesh  
1 interior pocket  
Adjustable Velcro® cuffs & waist; stirrups;  
full length Velcro® on front opening to reinforce zip closure  
V-Twin Fit

**ADDITIONAL FEATURES**  
100% waterproof & breathable; reflective piping; removable suspenders; stows into self storage bag attached to jacket lining; branding on the front, legs & back

**XS-5XL**      **2867447**  
**US: \$179.99**    **CAN: \$234.99**



**LEXINGTON JACKET**

**CASUAL** A timeless, casual style jacket featuring a slanted left pocket and buckle collar. This jacket is made from a durable, coated canvas fabric.

**FEATURES**  
Fixed lining  
4 exterior & 1 interior pockets  
Snap cuffs  
V-Twin Fit

**ADDITIONAL FEATURES**  
Action back; antique silver zippers & snaps; snapdown pockets; hidden lower snaps, adjustable side tabs; leather patch on front; woven patch at back neck

**XS-3XL**      **2868913**  
**US: \$199.99**    **CAN: \$259.99**



**RAVEL JACKET**

**CASUAL** A classic utility jacket with a modern print on the back. This is in a hardwearing canvas fabric with stretch which gives flexibility. Collar is secured with hidden snaps.

**FEATURES**  
Fixed lining  
3 exterior & 1 interior pockets  
Snap cuffs  
V-Twin Fit

**ADDITIONAL FEATURES**  
Action back; antique brass zippers & snaps; embossed logo patch on chest pocket; zip up pockets

**S-5XL**      **2868900**  
**US: \$169.99**    **CAN: \$219.99**



**TALL SIZES**  
**1901 JACKET**

**CASUAL** A lightweight casual jacket with full on cool Indian Motorcycle® branding. Retro chest and sleeve stripes have a vintage race feel.

**FEATURES**  
Fixed lining- airmesh  
2 exterior, 2 interior pockets  
V-Twin Fit

**ADDITIONAL FEATURES**  
Water resistant & breathable; snap fasten collar; action back; embroidered & applique script logo on front; printed graphic on back; woven patches on left & right sleeve

**S-5XL, XLT-3XLT**    **2866177**  
**US: \$149.99**      **CAN: \$194.99**





**NEW**  
**SPRINGFIELD MESH 2 JACKET** CE

**MESH** A slick update on the original Springfield Mesh jacket for riding in warmer climates. Mesh panels allow air to flow freely, helping the rider stay cool. There are leather powerstretch panels on the elbows for flexibility. A removable lightweight windproof liner offers insulation when temperatures drop.

**FEATURES**

Fixed lining- airmesh  
Windproof removable liner- long sleeve  
2 exterior & 2 interior pockets  
Powerstretch elbow panels; zip side panels;  
snap cuffs  
Women's V-Twin Fit  
CE certified; EU Regulation 2016/425  
prEN 17092-4:2018

**ADDITIONAL FEATURES**

Removable CE protectors in shoulders & elbows (EN 1621-1:2012); 3M® reflective piping; action back; patch on chest; script logo applique & embroidered on back; leather logo patch on back; headdress patch on right sleeve; American flag patch on left sleeve

**XS-3XL**      **2869625**  
**US: \$209.99**    **CAN: \$269.99**



**DRIFTER MESH JACKET** CE

**MESH** A full mesh riding jacket with bold branding on back. Full mesh construction offers the greatest air flow for hot days. A removable lightweight windproof liner gives insulation in cool temperatures.

**FEATURES**

Fixed lining- airmesh  
Windproof removable liner- long sleeve  
2 exterior & 1 interior pockets  
Side adjustment zips; zip cuff  
Women's V-Twin Fit  
CE certified; Directive 89/686/EEC  
prEN 17092-4:2017.  
Achieved classification 'A'

**ADDITIONAL FEATURES**

Removable CE protectors in shoulders & elbows (EN 1621-1:2012); snap collar; action back; logo patch on front; applique and embroidered logo on back

**XS-3XL**      **2868884**  
**US: \$189.99**    **CAN: \$249.99**



**LIGHTWEIGHT MESH JACKET** CE

**MESH** Retro styled full mesh riding jacket. Bold branding on back and front demonstrates Indian Motorcycle® as your brand of choice. Full mesh construction offers maximum air flow for the warmest of days. A removable lightweight windproof liner offers insulation for cool mornings.

**FEATURES**

Fixed lining- airmesh  
Windproof removable liner- long sleeve  
2 exterior & 2 interior pockets  
Side adjustment zips; snap cuff  
Women's V-Twin Fit  
CE certified; Directive 89/686/EEC  
prEN 17092-4:2017.  
Achieved classification 'A'

**ADDITIONAL FEATURES**

Removable CE protectors in shoulders & elbows (EN 1621-1:2012); power stretch action back; snap collar & cuffs; script logo embroidered & applique on front & back; circle headdress patch on right sleeve

**XS-3XL**      **2868886**  
**US: \$179.99**    **CAN: \$234.99**





**BLAZE VEST**  
CASUAL A black leather vest with decorative lace detailing on the front and edgy stud detailing that accentuates the figure. Laced side-seams allow expansion where needed.

**FEATURES**  
0.55-0.65mm thick leather shell  
Fixed lining  
1 interior pocket  
Adjustable side lacing  
Women's V-Twin Fit

**ADDITIONAL FEATURES**  
Antique brass zip & studs; front lacing; embossed logo on lapel; snap down lapel; embroidered & applique logo on back

**XS-3XL** 2868675  
**US: \$199.99** **CAN: \$219.99**



**INDIAN MOTORCYCLE® VEST 2**  
CASUAL A traditional staple for cruiser riders. The side laces can be adjusted to allow expansion where needed. The logos are a combination of embroidery and leather applique. Branded rivets decorate the shoulder and back panel.

**FEATURES**  
1.0-1.2mm thick leather shell  
Fixed lining  
2 exterior & 1 interior pockets  
Women's V-Twin Fit

**ADDITIONAL FEATURES**  
Antique brass snaps; lace up sides; embroidered front logo; applique & embroidered logo on back

**XS-3XL, 1W-3W** 2863716  
**US: \$149.99** **CAN: \$194.99**



**INDIAN MOTORCYCLE® CHAPS**  
These black leather chaps offer great adjustability across waist and thigh with stretchable heavy spandex, 2 full length zippers to make the leg looser or tighter and raw edge hems which can be cut to size.

**FEATURES**  
Fixed lining  
3 exterior pockets  
Lacing at back; heavy spandex on thigh  
Double zip outseam

**ADDITIONAL FEATURES**  
Antique brass zippers & snaps; raw edge hem; embroidered logo on front & back

**S-5XL** 2863714  
**US: \$229.99** **CAN: \$299.99**



**ADELINE JACKET**  
CASUAL A black leather jacket with decorative lace detailing on the back and bold stud detailing that flatters the figure. Laced side-seams allow expansion where needed.

**FEATURES**  
0.55-0.65mm thick leather shell  
Fixed lining  
2 exterior & 1 interior pockets  
Twin snap wrist  
Adjustable side lacing  
Women's V-Twin Fit

**ADDITIONAL FEATURES**  
Antique brass zip & studs; back lacing; embroidered & applique logo on back; snap collar

**XS-3XL** 2868914  
**US: \$269.99** **CAN: \$349.99**



**BESSIE JACKET**  
CASUAL A classic black suede casual jacket. This style is timeless with subtle detailing and flatters with a slimmer fit. Modern Indian Motorcycle® branding on the back adds a nice touch.

**FEATURES**  
0.6-0.65mm thick leather suede  
Fixed lining  
2 exterior & 1 interior pockets  
Snap wrist & side tabs  
Women's V-Twin Fit

**ADDITIONAL FEATURES**  
Non-riding jacket; action back; antique brass snaps; embroidered logo on back; embossed logo patch on chest; snap collar

**XS-3XL** 2868915  
**US: \$249.99** **CAN: \$324.99**







**NEW**  
**RETRO BOMBER JACKET**

This is a vintage style casual jacket with a branded patch on the chest and striped trim details.

**FEATURES**

Fixed lining  
2 exterior & 1 interior pockets  
Rib knit collar, cuffs & hem  
Women's V-Twin Fit

**ADDITIONAL FEATURES**

Zip close waist pockets; woven logo patches on chest

**XS-3XL**      **2869626**  
**US: \$139.99**      **CAN: \$179.99**



**1901 JACKET**

A lightweight casual jacket with slick Indian Motorcycle® branding. Retro chest and sleeve stripes give a polished vintage look.

**FEATURES**

Fixed lining- airmesh  
2 exterior & 2 interior pockets  
Snap wrist  
Women's V-Twin Fit

**ADDITIONAL FEATURES**

Water resistant & breathable; snap fasten collar; embroidered & applique logo on front; printed graphic on back; woven patches on sleeves

**XS-3XL**      **2868676**  
**US: \$149.99**      **CAN: \$194.99**



**SPIRIT JACKET**

Lightweight casual jacket. This flattering female cut jacket, with light color panels to slim the waist has strong Indian Motorcycle® branding with logos on front, back and sleeve.

**FEATURES**

Fixed lining  
2 exterior & 2 interior pockets  
Powerstretch side panels; snap wrist; back snaps  
Women's V-Twin Fit

**ADDITIONAL FEATURES**

Action back; water resistant & breathable; embroidered logo on front; applique & embroidered logo on back; circle headdress patch on right sleeve

**XS-3XL**      **2865220**  
**US: \$124.99**      **CAN: \$164.99**





**DRIFTER MESH GLOVE** CE

**SUMMER** Constructed using a combination of mesh, to allow airflow, and leather palm and finger panels. This lightweight glove is easy to wear in warm weather conditions.

**FEATURES**  
Mesh glove with leather palm & wrist  
Velcro® wrist closure  
Touchscreen leather on fingertip & thumb  
Mens CE certified; Directive 89/686/EEC.  
EN 13594:2015

**S-4XL**                    **2867449**  
**US: \$59.99**            **CAN: \$79.99**



**MESH GLOVE** CE

**SUMMER** A combination of mesh, to allow airflow, and leather palm and finger panels construct this summer glove. The lightweight design offers very little bulk and is easy to wear in warm weather conditions.

**FEATURES**  
Mesh glove with leather palm & wrist  
Gel padded palm  
Velcro® wrist closure  
Mens & Womens CE certified; Directive 89/686/EEC. French Protocol Level 1

**MEN'S: S-4XL**            **2867646**  
**WOMEN'S: S-XL**        **2867647**  
**US: \$49.99**              **CAN: \$67.99**



**FINGERLESS GLOVE**

**SUMMER** A cruiser style fingerless glove in black leather. A double leather and gel palm panel adds comfort. The hooks on the end of the finger tips allow the glove to be removed easily.

**FEATURES**  
Full leather construction  
Gel padded palm  
Velcro® wrist closure  
Laser etched logo

**MEN'S: S-4XL**            **2863720**  
**WOMEN'S: S-XL**        **2863721**  
**US: \$44.99**              **CAN: \$59.99**



**CINDER GLOVE** CE

**SUMMER** A sporty style glove with contrasting perforated panels, Velcro® closure, and emblem patch. Complements nicely with the Benjamin Jacket.

**FEATURES**  
Full leather construction  
Padded palm  
Velcro® wrist closure  
Touchscreen fingertip & thumb  
Mens CE certified; Directive 89/686/EEC.  
EN 13594:2015

**S-4XL**                    **2868678**  
**US: \$69.99**            **CAN: \$89.99**



**SOLO GLOVE** CE

**MID SEASON** A strong and lightweight glove with hard knuckle protector offers protection and modern style.

**FEATURES**  
Mixed textile & leather construction  
Hard knuckle protector  
Velcro® wrist closure  
Touchscreen fingertip & thumb  
Mens CE certified; Directive 89/686/EEC.  
EN 13594:2015

**S-4XL**                    **2868679**  
**US: \$59.99**            **CAN: \$79.99**



**BROWN TEXTURE GLOVE**

**MID SEASON** Simple unstructured short style brown leather glove. Contrast leather textures on the top and palm of the hand.

**FEATURES**  
Full leather construction  
Raw seam edges with double leather panel on palms  
Velcro® wrist closure  
Laser etched thumb logo

**S-4XL**                    **2867450**  
**US: \$59.99**            **CAN: \$79.99**



**PASSAGE GLOVE** CE

**MID SEASON** A modern and stylish glove with hard knuckle protector, outer padding and Velcro® strap closure.

**FEATURES**  
Mixed textile & leather construction  
Hard knuckle protector  
Velcro® wrist closure  
Touchscreen index & thumb tips  
Mens CE certified; Directive 89/686/EEC.  
EN 13594:2015

**S-4XL**                    **2868680**  
**US: \$49.99**            **CAN: \$67.99**



**DEERSKIN STRAP GLOVE**

**MID SEASON** A deerskin glove in a classic style with Velcro® closure for wearing mid season.

**FEATURES**  
Full deerskin leather construction  
Heat branding on wrist  
Velcro® wrist closure

**S-4XL**                    **2868677**  
**US: \$74.99**            **CAN: \$99.99**



**CLASSIC GLOVE** CE

**MID SEASON** Mid season, classic black leather glove. Simple styling with double leather panels, perforated leather finger panels and Velcro® closure.

**FEATURES**  
Full leather construction  
Perforated inner finger panels  
Exposed seam construction with double leather panel on palms  
Velcro® wrist closure  
Mens & Womens CE certified; Directive 89/686/EEC. French Protocol Level 1

**MEN'S: S-4XL**            **2867644**  
**WOMEN'S: S-XL**        **2867645**  
**US: \$59.99**              **CAN: \$79.99**



**RETRO GLOVE** CE

**MID SEASON** Mid season, black leather with red and cream leather panels to match several of our jackets. The padded knuckle, perforated finger panels and double leather contrast palms make these as comfortable as they are cool.

**FEATURES**  
Full leather construction  
Perforated inner finger panels  
Padded knuckles  
Velcro® wrist closure  
Mens & Womens CE certified; Directive 89/686/EEC. French Protocol Level 1

**MEN'S: S-4XL**            **2867649**  
**WOMEN'S: S-XL**        **2867650**  
**US: \$69.99**              **CAN: \$89.99**







**NEW** // BIG SIZES  
**CARBON OPEN FACE HELMET**

**FEATURES**  
Matte UV lacquer finish  
100% carbon fiber outer shell; EPS inner shell  
Fixed lining  
Weight: 1050g  
Safety: DOT certified; ECE certified

**ADDITIONAL FEATURES**  
Detachable sunpeak & cheek pads;  
D ring closure; goggle fastener at back;  
Bluetooth® compatible

**XS-4XL**      **2869633**  
**US: \$249.99**    **CAN: \$324.99**



**NEW** // BIG SIZES  
**OPEN FACE HELMET - WHITE STRIPE**

**FEATURES**  
Glossy UV lacquer finish  
100% fiberglass outer shell; EPS inner shell  
Fixed lining  
Weight: 1150g  
Safety: DOT certified; ECE certified

**ADDITIONAL FEATURES**  
Detachable sunpeak & cheek pads;  
D ring closure; goggle fastener at back;  
Bluetooth® compatible

**XS-4XL**      **2869628**  
**US: \$149.99**    **CAN: \$194.99**

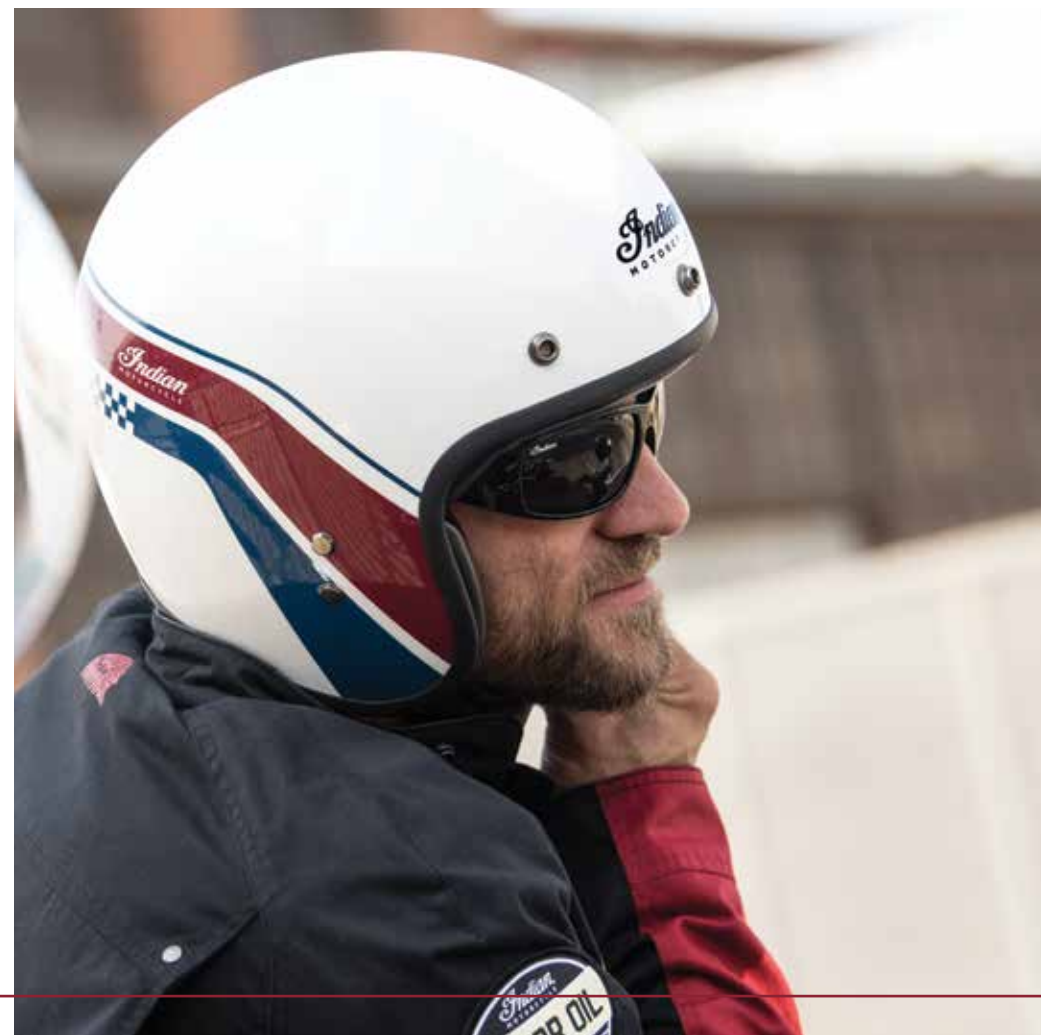


**NEW** // BIG SIZES  
**OPEN FACE HELMET - MATTE STRIPE**

**FEATURES**  
Matte UV lacquer finish  
100% fiberglass outer shell; EPS inner shell  
Fixed lining  
Weight: 1150g  
Safety: DOT certified; ECE certified

**ADDITIONAL FEATURES**  
Detachable sunpeak & cheek pads;  
D ring closure; goggle fastener at back;  
Bluetooth® compatible

**XS-4XL**      **2869629**  
**US: \$149.99**    **CAN: \$194.99**



**BIG SIZES**  
**TWO TONE OPEN FACE HELMET**

**FEATURES**  
Glossy UV lacquer finish  
100% fiberglass outer shell; EPS inner shell  
Fixed lining  
Weight: 1150g  
Safety: DOT certified; ECE certified

**ADDITIONAL FEATURES**  
Detachable sunpeak & cheek pads;  
D ring closure; goggle fastener at back;  
Bluetooth® compatible; Chrome piping

**XS-4XL**      **2868897**  
**US: \$149.99**    **CAN: \$194.99**



**BIG SIZES**  
**SCOUT® OPEN FACE HELMET**

**FEATURES**  
Glossy UV lacquer finish  
100% fiberglass outer shell; EPS inner shell  
Fixed lining  
Weight: 1150g  
Safety: DOT certified; ECE certified

**ADDITIONAL FEATURES**  
Detachable sunpeak & cheek pads;  
D ring closure; goggle fastener at back;  
Bluetooth® compatible; Chrome piping

**XS-4XL**      **2868895**  
**US: \$149.99**    **CAN: \$194.99**



**BIG SIZES**  
**RETRO OPEN FACE HELMET, WHITE**

**FEATURES**  
Glossy UV lacquer finish  
100% fiberglass outer shell; EPS inner shell  
Fixed lining  
Weight: 1150g  
Safety: DOT certified; ECE certified

**ADDITIONAL FEATURES**  
Detachable sunpeak & cheek pads;  
D ring closure; goggle fastener at back;  
Bluetooth® compatible

**XS-4XL**      **2868684**  
**US: \$149.99**    **CAN: \$194.99**



**RETRO OPEN FACE HELMET BUBBLE VISOR**

Only works with the following open face helmets: 2868684, 2868869, 2868870, 2868871, 2868872, 2868897, 2868895, 2869628, 2869633 & 2869629.

**ONE SIZE**  
**A. CLEAR**      **2868873**  
**B. GRAY**      **2868874**  
**C. REFLECTIVE SILVER**    **2868875**  
**D. ORANGE**      **2868876**  
**E. RED**      **2868877**  
**F. GRADIENT PINK**    **2868878**  
**US: \$19.99**      **CAN: \$26.99**



**RETRO OPEN FACE HELMET SUN PEAK**

Only works with the following open face helmets: 2868684, 2868869, 2868870, 2868871, 2868872, 2868897, 2868895, 2869628, 2869633 & 2869629.

**ONE SIZE**      **2868830**  
**US: \$9.99**      **CAN: \$14.99**



**OPEN FACE HELMET SUN PEAK**

Only works with the following helmets: 2868681, 2866199 & 2866310.

**ONE SIZE**      **2863849**  
**US: \$9.99**      **CAN: \$14.99**





BIG SIZES

### RETRO OPEN FACE HELMET, RED

**FEATURES**

Glossy UV lacquer finish  
100% fiberglass outer shell; EPS inner shell  
Fixed lining  
Weight: 1150g  
Safety: DOT certified; ECE certified

**ADDITIONAL FEATURES**

Detachable sunpeak & cheek pads;  
D ring closure; goggle fastener at back;  
Bluetooth® compatible; Chrome piping

**XS-4XL**      **2868872**  
**US: \$139.99**    **CAN: \$179.99**



BIG SIZES

### RETRO OPEN FACE HELMET, BLACK

**FEATURES**

Glossy UV lacquer finish  
100% fiberglass outer shell; EPS inner shell  
Fixed lining  
Weight: 1150g  
Safety: DOT certified; ECE certified

**ADDITIONAL FEATURES**

Detachable sunpeak & cheek pads;  
D ring closure; goggle fastener at back;  
Bluetooth® compatible; Chrome piping

**XS-4XL**      **2868870**  
**US: \$139.99**    **CAN: \$179.99**



BIG SIZES

### RETRO OPEN FACE HELMET, SILVER

**FEATURES**

Glossy UV lacquer finish  
100% fiberglass outer shell; EPS inner shell  
Fixed lining  
Weight: 1150g  
Safety: DOT certified; ECE certified

**ADDITIONAL FEATURES**

Detachable sunpeak & cheek pads;  
D ring closure; goggle fastener at back;  
Bluetooth® compatible

**XS-4XL**      **2868871**  
**US: \$139.99**    **CAN: \$179.99**



BIG SIZES

### RETRO OPEN FACE HELMET, MATTE BLACK

**FEATURES**

Matte UV lacquer finish  
100% fiberglass outer shell; EPS inner shell  
Fixed lining  
Weight: 1150g  
Safety: DOT certified; ECE certified

**ADDITIONAL FEATURES**

Detachable sunpeak & cheek pads; D ring closure;  
goggle fastener at back; Bluetooth® compatible

**XS-4XL**      **2868869**  
**US: \$139.99**    **CAN: \$179.99**



NEW / BIG SIZES

### MATTE STRIPE FULL FACE HELMET

**FEATURES**

UV lacquer finish  
100% fiberglass outer shell; EPS inner shell  
Fixed inner lining  
Weight: 1450g  
Safety: DOT certified; ECE certified

**ADDITIONAL FEATURES**

Anti-fog Pinlock 30, anti-scratch shield  
coatings; detachable cheek pads; D-ring  
closure; Bluetooth® compatible

**XS-4XL**      **2869630**  
**US: \$289.99**    **CAN: \$369.99**



### RETRO FULL FACE HELMET VISOR

Only works with Retro Full Face  
Helmets, 2868683 & 2869630.

**ONE SIZE**  
**GRAY**                      **2868890**  
**CLEAR**                    **2868829**  
**US: \$19.99**              **CAN: \$24.99**



### RETRO FULL FACE HELMET

**FEATURES**

Glossy UV lacquer finish  
100% fiberglass outer shell; EPS inner shell  
Fixed inner lining  
Weight: 1450g  
Safety: DOT certified; ECE certified

**ADDITIONAL FEATURES**

Anti-fog Pinlock 30, anti-scratch shield  
coatings; detachable cheek pads; quick  
release chin strap; Bluetooth® compatible

**XS-2XL**      **2868683**  
**US: \$269.99**    **CAN: \$349.99**





SPRINGFIELD MESH 2 JACKET  
PAGE 10

**NEW**  
**HALF HELMET 3**

**FEATURES**  
Matte ABS outer shell; EPS inner shell  
Fixed inner lining  
Weight: 980g  
Safety: DOT certified

**ADDITIONAL FEATURES**  
Size adjuster at back; inner sun visor & Bluetooth® compatible

**XS-2XL**      **2869634**  
**US: \$79.99**    **CAN: \$104.99**

**PINSTRIPE HELMET**

**FEATURES**  
Glossy ABS outer shell; EPS inner shell  
Fixed inner lining  
Weight: 985g  
Safety: DOT certified

**ADDITIONAL FEATURES**  
Size adjuster at back

**XS-XL**      **2867638**  
**US: \$79.99**    **CAN: \$104.99**

**HALF HELMET 1**

**FEATURES**  
Matte ABS outer shell; EPS inner shell  
Fixed inner lining  
Weight: 980g  
Safety: DOT certified

**ADDITIONAL FEATURES**  
Size adjuster at back; inner sun visor & Bluetooth® compatible

**XS-2XL**      **2863696**  
**US: \$79.99**    **CAN: \$104.99**

**HALF HELMET 2**

**FEATURES**  
Matte ABS outer shell; EPS inner shell  
Fixed inner lining  
Weight: 980g  
Safety: DOT certified

**ADDITIONAL FEATURES**  
Size adjuster at back; inner sun visor & Bluetooth® compatible

**XS-2XL**      **2864367**  
**US: \$79.99**    **CAN: \$104.99**

**ELITE HALF HELMET**

**FEATURES**  
Matte, UV lacquer finish  
100% fiberglass outer shell; EPS inner shell  
Fixed lining  
Weight: 845g  
Safety: DOT certified

**ADDITIONAL FEATURES**  
Zip-off cheek pads; size adjuster at rear

**XS-XL**      **2867640**  
**US: \$79.99**    **CAN: \$104.99**

**HIGHWAY HALF HELMET**

**FEATURES**  
Matte, UV lacquer finish  
ABS outer shell; EPS inner shell  
Fixed inner lining  
Weight: 1135g  
Safety: DOT certified

**ADDITIONAL FEATURES**  
Snap on sun peak;  
zip-off cheek pads; size adjuster at rear

**XS-XL**      **2867639**  
**US: \$79.99**    **CAN: \$104.99**



**HALF HELMET VISOR**

Only works with the following half helmets: 2863696, 2864367, 2869634.

**ONE SIZE**      **2866311**  
**US: \$19.99**    **CAN: \$25.99**







**LIBERTY JET HELMET**

**FEATURES**  
Matte ABS outer shell; EPS inner shell  
Removable, washable lining  
Weight: 1250g  
Safety: DOT certified; ECE certified

**ADDITIONAL FEATURES**  
Anti-scratch visor; top & rear vents;  
inner sun visor; Bluetooth® compatible

**XS-2XL**      **2867454**  
**US: \$149.99**    **CAN: \$194.99**



**OUTPOST HELMET**

**FEATURES**  
Glossy ABS outer shell; EPS inner shell  
Removable, washable lining  
Weight: 1550g  
Safety: DOT certified; ECE certified

**ADDITIONAL FEATURES**  
Anti-fog Pinlock 30, anti-scratch  
shield coatings; chin, top & rear vents;  
Bluetooth® compatible

**XS-2XL**      **2868682**  
**US: \$229.99**    **CAN: \$299.99**



**FREEWAY HELMET**

**FEATURES**  
Matte ABS outer shell; EPS inner shell  
Removable, washable lining  
Weight: 1450g  
Safety: DOT certified; ECE certified

**ADDITIONAL FEATURES**  
Anti-fog Pinlock 30, anti-scratch shield  
coatings; chin & top vents; Bluetooth®  
compatible, inner sun visor

**XS-2XL**      **2867453**  
**US: \$199.99**    **CAN: \$259.99**



SHADOW MESH JACKET  
PAGE 9



**ROUTE MODULAR HELMET**

**FEATURES**  
Matte finish  
70% polycarbonate, 30% ABS outer shell;  
EPS inner shell  
Removable, washable cheek pads  
Weight: 1600g  
Safety: DOT certified; ECE certified

**ADDITIONAL FEATURES**  
Anti-fog Pinlock 30; top & rear vents; inner  
sun visor; Bluetooth® compatible

**XS-2XL**      **2867637**  
**US: \$219.99**    **CAN: \$284.99**



**LIBERTY JET HELMET VISOR**

**ONE SIZE**      **2867461**  
**US: \$19.99**      **CAN: \$25.99**



**FREEWAY FULL FACE  
HELMET VISOR**

**ONE SIZE**      **2867460**  
**US: \$19.99**      **CAN: \$25.99**



**ROUTE MODULAR  
HELMET VISOR**

**ONE SIZE**      **2867643**  
**US: \$19.99**      **CAN: \$25.99**

**PINLOCK 30 FOG RESISTANT  
INSERT LENS - CLEAR (NOT PICTURED)**

**ONE SIZE**      **2867462**  
**US: \$24.99**      **CAN: \$32.99**





### MEN'S MESH SNEAKER

Casual day sneaker. Vibram® sole to provide grip and abrasion resistance. The premium cow leather, antique silver eyelets and breathable mesh panel design make this sneaker a favorite.

#### FEATURES

1.4-1.5mm thick durable cow leather  
Cusset tongue keeps out sand & water  
Antibacterial microfiber insock & mesh lining  
Includes black & red waxy shoe laces

SIZE: 7-13  
US: \$119.99

2868685  
CAN: \$155.99



### MEN'S SOCKS 3 PACK

Multi pack of branded Indian Motorcycle® socks. Each pack includes three colors; black, gray and navy.

ONE SIZE (US 7-13)  
US: \$24.99

2868691  
CAN: \$34.99



### MEN'S SNEAKER - BLACK



This sneaker provides a stable fit and protection. The Vibram® sole provides grip and abrasion resistance. The premium cow leather, antique silver eyelets and pinstripe design make this sneaker a favorite for riding and around town.

#### FEATURES

1.4-1.5mm thick durable cow leather  
Cusset tongue keeps out sand & water  
Antibacterial microfiber insock & mesh lining  
Ankle protector, toe cap & heel cup  
Gear shift pad  
Includes black & red waxy shoe laces  
CE certified, Personal Protective Equipment  
Regulation 2016/425; EN 13634:2017

SIZE: 7-13  
US: \$129.99

2867689  
CAN: \$169.99



### MEN'S CLASSIC MOC - BROWN



This 8-inch lifestyle moccasin boot is developed to provide a stable fit and protection with an ecru Vibram® sole. The premium cow leather, antique brass eyelets and all brown stitching make these boots a favorite for riding and being seen around town.

#### FEATURES

1.4-1.5mm thick durable cow leather  
Cusset tongue & zipper keep out sand & water  
Antibacterial microfiber insock & mesh lining  
Ankle protector, toe cap & heel cup  
Gear shift pad  
Includes brown & ecru waxy shoe laces  
CE certified, Personal Protective Equipment  
Regulation 2016/425; EN 13634:2017

SIZE: 7-13  
US: \$199.99

2867691  
CAN: \$259.99

### NEED A REPAIR?

Nu Shoe® is the official cobbler for all Vibram® sole replacements.

[www.nushoe.com/indian-boot-repair](http://www.nushoe.com/indian-boot-repair)  
Toll free number: 1-877-687-4631





### MEN'S ENGINEER - BLACK

This 7.5-inch boot is an iconic short Engineer style with burnish suede back panel. It features an internal YKK® zipper for easy pull-on and a Vibram® sole to provide grip and abrasion resistance. The premium cow leather, original Indian Motorcycle® buckles and all black stitching will have you riding in style.



#### FEATURES

1.4-1.5mm thick durable cow leather  
Strap & elastic gusset to adjust the fitting  
Antibacterial microfiber insock & mesh lining  
Ankle protector, toe cap & heel cup  
Gusset zipper keeps out sand & water  
CE certified. Personal Protective Equipment  
Regulation 2016/425; EN 13634:2017

SIZE: 7-13      2867690  
US: \$199.99    CAN: \$259.99



### MEN'S WORTHINGTON BOOT

This boot is based on Red Wing Shoes' classic Engineer style and has been modified for Indian Motorcycle® riders. This 11-inch pull-on boot features plain toe styling, a Vibram® 430 sole to provide higher grip and abrasion resistance and an instep strap to adjust the fitting. The premium Red Wing Shoes® Black Harness leather, original Indian Motorcycle® buckles, embossed logo and all black stitching will have you riding in style.



#### FEATURES

2.0-2.2mm thick durable Red Wing® work boots leather  
Instep strap to adjust the fitting  
Leather insole  
Traditional Engineer style from 1930s  
Original Indian Motorcycle® logo buckles

SIZE: 7-13      2864411  
US: \$319.99    CAN: \$409.99



### MEN'S CLASSIC LACE UP - BLACK

This 8-inch classic lace up boot is developed to provide a stable fit and protection, it has a Vibram® sole to provide grip and abrasion resistance. The premium cow leather, antique silver eyelets and all black stitching make these boots a favorite for riding and being seen around town.



#### FEATURES

1.4-1.5mm thick durable cow leather  
Gusset tongue keeps out sand & water  
Antibacterial microfiber insock & mesh lining  
Ankle protector, toe cap & heel cup  
Certified slip resistance outsole  
Internal YKK® zipper for easy pull-on  
Includes black & mix combo colored waxy shoe laces  
CE certified. Personal Protective Equipment  
Regulation 2016/425; EN 13634:2017

SIZE: 7-13      2867688  
US: \$199.99    CAN: \$259.99



### MEN'S SPIRIT LAKE BOOT

This boot is based on Red Wing Shoes' popular Iron Ranger and has been modified for Indian Motorcycle® riders. It is an 8-inch boot developed to provide a stable fit and ankle protection, has a Vibram® 430 sole to provide higher grip and abrasion resistance and features a double layer leather toe cap for protection. The premium Red Wing Shoes® Amber Portage leather, gunmetal eyelets and all brown stitching make these boots a favorite for riding and being seen around town.



#### FEATURES

2.0-2.2mm thick durable Red Wing® work boots leather  
Double layer capped toe to protect the toe area  
Gusset tongue to prevent sand or water from getting into the boots  
Leather insole

SIZE: 7-13      2864412  
US: \$319.99    CAN: \$409.99



### WOMEN'S SHORT ENGINEER - BLACK

This 8-inch boot is a professional short Engineer style with burnish suede back panel. It features an internal YKK® zipper for easy pull-on. The premium cow leather, original Indian Motorcycle® buckles, embossed logo and all black stitching will have you riding in style.



#### FEATURES

1.4-1.5mm thick durable cow leather  
Strap & elastic gusset to adjust the fitting  
Antibacterial microfiber insock & mesh lining  
Ankle protector, toe cap & heel cup  
Gear shift pad  
Gusset zipper keeps out sand & water  
CE certified. Personal Protective Equipment  
Regulation 2016/425; EN 13634:2017

SIZE: 5-11      2867692  
US: \$189.99    CAN: \$249.99



### WOMEN'S TALL ENGINEER - BROWN

This 13-inch boot is a casual tall Engineer style with burnish suede back panel. It features an internal YKK® zipper an easy opening, with heeled wooden sole and an elastic gusset to adjust the fitting.

#### FEATURES

1.4-1.5mm thick durable cow leather  
Strap & elastic gusset to adjust the fitting  
Antibacterial microfiber insock & mesh lining  
Gusset zipper keeps out sand & water

SIZE: 5-11      2863964  
US: \$249.99    CAN: \$324.99



MEN'S SNEAKER  
PAGE 32







CASUAL HOODIE  
PAGE 55

PORT MARL POCKET TEE  
PAGE 40



QUICK DRY LOGO TEE  
PAGE 42

QUICK DRY TANK  
PAGE 53



## FASHION FIT TEES

These tees fit closer to the body than other styles, with a slimmer chest, waist and shoulder, giving a comfortable and sleek silhouette. Reference the size chart on page 3 for more details on the fit.



### NEW SHIELD 1200 TEES

These simple tees come in a more fashionable fit than our other tees and feature a small printed chest and back neck logo.

Fabric: 100% cotton single jersey  
Graphics: Small shield logo on front; small hand painted logo on back neck  
Fit: Men's Fashion Fit T-Shirt

S-3XL	
BLACK	2869690
ANTIQUÉ WHITE	2869691
US: \$34.99	CAN: \$46.99



### NEW HAND PAINTED TEES

These tees come in a more fashionable fit than our other tees and feature an Indian Motorcycle® graphic print across the front, in a hand painted style.

Fabric: 100% cotton single jersey  
Graphics: Large hand painted graphic on front; small hand painted logo on back neck  
Fit: Men's Fashion Fit T-Shirt

S-3XL	
NAVY	2869682
RED	2869685
US: \$34.99	CAN: \$46.99



### NEW FTR 1200 LOGO TEE

Celebrate the excitement and energy of the American Flat Track with this 1200 tee.

Fabric: 100% cotton single jersey  
Graphics: Large logo on front; small print at back neck  
Fit: Men's Fashion Fit T-Shirt

S-3XL	
BLACK	2868965
ECRU	2868966
US: \$34.99	CAN: \$46.99



### NEW ADVENTURE TEES

These tees come in a more fashionable fit than our other tees and celebrate the energy of the American Flat Track.

Fabric: 100% cotton single jersey  
Graphics: Large graphic on front; small hand painted logo on back neck  
Fit: Men's Fashion Fit T-Shirt

S-3XL	
ANTIQUÉ WHITE	2869687
GRAY	2869688
US: \$34.99	CAN: \$46.99



### NEW UV RACING TEE

Celebrate the excitement and energy of the American Flat Track with this racing style tee. This long sleeved tee uses a bamboo charcoal coating to offer UV protection SPF50, along with thermal control, dry fast, and high wicking properties, to keep you cool and dry on summer rides.

Fabric: 100% polyester  
Graphics: Small FTR 1200 logo on chest; large logo on back; logo on left sleeve; thumb holes at cuff

S-3XL	
US: \$59.99	CAN: \$79.99



### CHECKERED TEE

This long sleeved black tee features a checkered sleeve with distressed print. The tee has a vintage wash to give it a softer, more relaxed feel.

Fabric: 100% cotton single jersey  
Graphics: Large script logo on front; small logo print on back neck  
Fit: Men's Fashion Fit T-Shirt

S-3XL	
US: \$44.99	CAN: \$59.99



MADE IN  
\*\*\*\*\*  
U.S.A  
\*\*\*\*\*

### 1901 PORT BIKE TEE

Made in California, this port color tee comes in a more fashionable fit than our other tees. The finished tee has been given a vintage wash to add to the relaxed feel of the style.

Fabric: 100% cotton slub jersey  
Graphics: Large hand drawn illustration on front  
Fit: Men's Fashion Fit T-Shirt

S-3XL	2868954
US: \$39.99	CAN: \$54.99



MADE IN  
\*\*\*\*\*  
U.S.A  
\*\*\*\*\*

### 1901 FLAT TRACK BIKE TEE

Made in California, this antique white tee comes in a more fashionable fit than our other tees. It has a large front hand drawn illustration, referencing the history of Indian Motorcycle® and its flat track racing. The finished tee has been given a vintage wash, to add to the relaxed feel of the style.

Fabric: 100% cotton single jersey  
Graphics: Large hand drawn style graphic on front  
Fit: Men's Fashion Fit T-Shirt

S-3XL	2868956
US: \$39.99	CAN: \$54.99



MADE IN  
\*\*\*\*\*  
U.S.A  
\*\*\*\*\*

### 1901 FASTEST TEE

Made in California, this midnight blue tee comes in a more fashionable fit than our other tees. This tee references the history of Indian Motorcycle® accomplishing its fastest records at the Bonneville Salt Flats in Utah. The finished tee has been given a vintage wash, to add to the relaxed feel of the style.

Fabric: 100% cotton single jersey  
Graphics: Large hand drawn style graphic on front  
Fit: Men's Fashion Fit T-Shirt

S-3XL	2868957
US: \$39.99	CAN: \$54.99



MADE IN  
\*\*\*\*\*  
U.S.A  
\*\*\*\*\*

### 1901 CONEY ISLAND TEE

Made in California, this gray tee comes in a more fashionable fit than our other tees. It has a large front graphic in a hand painted style, referencing the history of Indian Motorcycle® and boardtrack racing. The finished tee has been given a vintage wash, to add to the relaxed feel of the style.

Fabric: 100% cotton single jersey  
Graphics: Large hand painted style front graphic  
Fit: Men's Fashion Fit T-Shirt

S-3XL	2868955
US: \$39.99	CAN: \$54.99





**NEW**

**RED MARL TEE**

This Indian Motorcycle® short sleeve tee is made in a flattering red marl cotton, a simple tee which features a large Indian Motorcycle® icon print in a soft discharge ink is a classic piece for any Indian Motorcycle® enthusiast.

Fabric: 100% cotton single jersey  
Graphics: Large distressed graphic on front; woven patch on right sleeve

S-3XL 2869657  
US: \$39.99 CAN: \$54.99



**IMC BIKE TEE**

This red Indian Motorcycle® short sleeve tee is made in a cotton jersey slub and features a bike print using water-based inks for a soft feel.

Fabric: 100% cotton slub jersey  
Graphics: Large distressed print on front; small logo print on back neck; woven patch on right sleeve; "Since 1901" embroidered at back hem

S-3XL 2868923  
US: \$34.99 CAN: \$46.99



**THUNDER STROKE® TEE, GRAY**

This tee celebrates the powerful Thunder Stroke® 111 engine, with a large logo on the front, and a large Thunder Stroke® 111 graphic on the back.

Fabric: 100% cotton single jersey  
Graphics: Large Thunder Stroke® 111 print on front and back & left sleeve; woven patch on right sleeve

S-3XL 2867593  
US: \$34.99 CAN: \$46.99



**MUNRO 1967 TEE**

This Indian Motorcycle® red tee celebrates the record breaking achievement of Burt Munro, with a large front graphic featuring the Scout® Streamliner.

Fabric: 100% cotton single jersey  
Graphics: Large distressed print on front; embroidered "B. Munro" on front hem; woven patch on right sleeve

S-3XL 2868812  
US: \$34.99 CAN: \$46.99



**NEW**

**PORT MARL POCKET TEE**

This versatile port marl tee features a large distressed graphic print across the back. The Indian Motorcycle® logo is printed directly above a single pocket on the chest.

Fabric: 100% cotton single jersey  
Graphics: Large distressed logo print on front; small logo on back neck; woven patch on right sleeve

S-3XL 2869659  
US: \$39.99 CAN: \$54.99



**WRECKING CREW TEE, PORT**

This dark red tee has a large front graphic based around the "Wrecking Crew" racing team.

Fabric: 100% cotton single jersey  
Graphics: Large distressed print on front; small racing logo on back; "Since 1901" embroidered on back hem; woven patch on right sleeve

S-3XL 2868817  
US: \$34.99 CAN: \$46.99



**BOMBER GIRL PRIDE TEE**

Large front graphic featuring a retro styled pin-up girl.

Fabric: 100% cotton single jersey  
Graphics: Distressed print on front; small distressed logo print on back; "Since 1901" embroidered at back hem; woven patch on right sleeve

S-3XL 2868809  
US: \$34.99 CAN: \$46.99





**NEW**  
SLEEVELESS QUICK DRY TEE

This tank offers UV protection SPF50, quick dry and high wicking properties to keep you cool and dry on summer rides.

Fabric: 100% polyester  
Graphics: Small logo on front & back neck

S-3XL      2869656  
US: \$44.99      CAN: \$59.99



**NEW**  
QUICK DRY LOGO TEE

This short sleeved tee offers UV protection SPF50, quick dry and high wicking properties to keep you cool and dry on summer rides.

Fabric: 100% polyester  
Graphics: Large logo on front; small logo on back neck

S-3XL      2869665  
US: \$49.99      CAN: \$67.99



**LOGO TEES**

Indian Motorcycle® logo tees are made with 100% pima cotton (excluding gray marl tee) which is a superior cotton. The logos are printed with discharge and water based inks for a soft feel.

Fabric: 100% cotton single jersey  
Graphics: Distressed Indian Motorcycle® logo on front; woven patch on right sleeve

S-5XL  
RED      2868807  
ANTIQUE WHITE      2867945  
ECRU (BLACK TEE)      2863317  
GRAY MARL      2863810  
US: \$29.99      CAN: \$39.99



**NEW**  
COLOR HEADRESS TEE

Celebrate the Indian Motorcycle® brand with this hand painted, full color headdress print.

Fabric: 100% cotton single jersey  
Graphics: Large hand painted logo on front; small logo on back neck; woven patch on right sleeve

S-5XL      2869660  
US: \$34.99      CAN: \$46.99



**NEW**  
BLOCK TEE

This fresh and stylish short sleeve tee features the Indian Motorcycle® block logo with matching signature chainstitching at the back neck.

Fabric: 100% cotton single jersey  
Graphics: Large logo on front; small logo on back neck; woven patch on right sleeve

S-3XL      2869658  
US: \$39.99      CAN: \$54.99



**MOTORCYCLE RACING TEE**

A black tee featuring a large Indian Motorcycle® racing logo across the back, and a small logo at the front chest.

Fabric: 100% cotton single jersey  
Graphics: Small logo print on front; large distressed racing logo print on back; woven label on right sleeve

S-3XL      2867562  
US: \$29.99      CAN: \$39.99



**NEW**  
ICON LOGO TEE

This fresh, antique white short sleeved tee features a signature Indian Motorcycle® headdress icon across the chest in a distressed waterbased print.

Fabric: 100% cotton single jersey  
Graphics: Large headdress logo on front; small logo print on back neck; woven patch on right sleeve

S-5XL      2869661  
US: \$34.99      CAN: \$46.99





**NEW**

**CHARCOAL MARL TEE**

This tee is made in a soft charcoal marl jersey and features a large front graphic print in a subtle mustard color adding a hint of color to a classic style.

Fabric: 100% cotton single jersey  
Graphics: Large graphic on front; small script logo on neck; woven patch on right sleeve

S-3XL 2869664  
US: \$44.99 CAN: \$59.99



**NEW**

**RAGLAN TEE**

Made in a soft slub jersey, this contrast raglan sleeve tee in moss gray and charcoal will be a casual staple during the upcoming weather transition months.

Fabric: 100% cotton slub jersey  
Graphics: Large graphic on front small logo print on back neck; woven patch on right sleeve

S-3XL 2869663  
US: \$49.99 CAN: \$67.99



**LONG SLEEVE BOMBER GIRL PRIDE TEE**

Large back graphic featuring a retro styled pin-up girl, and a large Indian Motorcycle® logo across the front chest and contrasting color sleeves for added style.

Fabric: 100% cotton single jersey  
Graphics: Distressed print on front & back; "Since 1901" embroidered on back hem; woven patch on right sleeve

S-3XL 2868810  
US: \$44.99 CAN: \$59.99



**NEW**

**LONG SLEEVE LOGO TEE, NAVY**

This timeless navy tee proudly displays the Indian Motorcycle® script logo. Printed using an antique white discharge ink for a soft feel.

Fabric: 100% cotton single jersey  
Graphics: Large logo on front; small logo on back neck; "Since 1901" embroidery at back hem; woven patch on right sleeve

S-5XL 2869662  
US: \$44.99 CAN: \$59.99



**LONG SLEEVE LOGO TEE**

A classic and simple long sleeve logo tee, in black cotton slub with a large Indian Motorcycle® logo printed on the front in a distressed discharge print, and a small logo at the back neck.

Fabric: 100% cotton slub jersey  
Graphics: Distressed Indian Motorcycle® logo on front & back neck; "1901" embroidery at back hem

S-5XL 2866270  
US: \$44.99 CAN: \$59.99



**WAFFLE HENLEY TEE**

A long sleeve gray marl tee made in a textured waffle knit, the honeycomb design of the fabric allows air to flow easily so that the fabric dries quickly.

Fabric: 100% cotton waffle  
Graphics: Small embroidered logo on front & back; leather patch at hem

S-3XL 2868925  
US: \$44.99 CAN: \$59.99



**UV PROTECT HEADDRESS TEE**

This long sleeve tee uses a bamboo charcoal coating to offer UV protection SPF50, along with thermal control, dry fast and high wicking properties, to keep you cool and dry on those summer rides.

Fabric: 100% polyester  
Graphics: Headdress logo on front, icon logo at back neck, script logo on both sleeves; thumb holes at cuff

S-3XL 2868924  
US: \$49.99 CAN: \$67.99



**LONG SLEEVE HEADDRESS TEE**

This tee features 2 in 1 sleeves, with a contrasting long sleeve under the short sleeve for a layered look. The Indian Motorcycle® headdress is printed in full color across the front.

Fabric: 100% cotton slub jersey  
Graphics: Large distressed headdress print on front; small logo print on back; "Since 1901" embroidered on back hem; woven patch on right sleeve

S-3XL 2868808  
US: \$44.99 CAN: \$59.99







**NEW**  
**ICON HOODIE**

This contrast gray marl and black zip thru hoodie is made in a soft, cotton blend with handwarmer pockets to keep hands cosy, perfect for layering over your favorite tees.

Fabric: 70% cotton, 30% polyester loopback  
Graphics: Small print on front; large print on back  
Additional Features: Two hand warmer pockets with snap closure; drawstring hood

**S-3XL**      **2869666**  
**US: \$89.99**      **CAN: \$119.99**



**NEW**  
**CHECKERED HOODIE**

Celebrate the excitement and energy of the American Flat Track with this vintage black hoodie featuring a checkered hood lining.

Fabric: 100% cotton terry  
Graphics: Small script logo on front; large embroidered logo on back; print on right sleeve  
Fit: Men's Fashion Fit

**S-3XL**      **2868971**  
**US: \$89.99**      **CAN: \$119.99**



**IMC HOODIE**

This pullover hoodie is made in a heavy fleece-backed fabric for added warmth. The front features the Indian Motorcycle® logo in applique, while the back features a large embroidered Indian Motorcycle® icon.

Fabric: 70% cotton, 30% polyester fleeceback  
Graphics: Embroidered logo on front & back  
Additional Features: Two hand warmer pockets; drawstring hood; contrasting stitching

**S-3XL**      **2863697**  
**US: \$74.99**      **CAN: \$99.99**



**IMC QUILTED HOODIE**

Keep warm in this quilted hoodie. With the body quilted in goose down, and contrasting sleeves and hood in a fleece backed melange, this hoodie offers all-over warmth. An Indian Motorcycle® logo patch is at the front chest.

Fabric: Body: 80% polyester, 20% nylon  
Sleeves & Hood: 100% polyester  
Down: 90% goose down, 10% feather, fill power 800  
Graphics: Branded patch on chest

**S-3XL**      **2867567**  
**US: \$169.99**      **CAN: \$219.99**



**NEW**  
**BLOCK LOGO SWEAT**

This classic port marl sweat features the Indian Motorcycle® block logo across the front in a white chainstitching embroidery.

Fabric: 70% cotton, 30% polyester loopback  
Graphics: Large embroidery on front; small embroidery on back neck; "Since 1901" embroidered on back hem; leather patch on right sleeve

**S-3XL**      **2869667**  
**US: \$79.99**      **CAN: \$104.99**



**NEW**  
**BLOCK LOGO KNIT**

This signature jacquard knit comes in a deep navy with the Indian Motorcycle® block logo on the front.

Fabric: 100% cotton knit  
Graphics: Large logo on front; small embroidery on back neck; "Since 1901" embroidery at back hem; leather patch on right sleeve

**S-3XL**      **2869668**  
**US: \$89.99**      **CAN: \$119.99**



**IMC CONTRAST ZIP THRU**

This contrasting zip-thru comes in light gray and dark gray marl. It features a large applique/embroidery on the back in antique white, and a small embroidery at the front chest. Branded zip pulls are used, along with a leather-look patch at the front hem.

Fabric: 70% cotton, 30% polyester loopback  
Graphics: Small embroidered logo on chest, large embroidered print on back; leather-look patch on front hem; embroidered patch on right sleeve

**S-3XL**      **2867566**  
**US: \$79.99**      **CAN: \$104.99**



**LOGO SWEAT**

This classic navy sweat features subtle Indian Motorcycle® branding across the front in navy applique and embroidery. A small embroidery is placed at the back neck.

Fabric: 100% cotton  
Graphics: Large embroidered logo on front; embroidery on back neck; "Since 1901" embroidery at back hem; leather patch on right sleeve

**S-3XL**      **2868929**  
**US: \$69.99**      **CAN: \$89.99**



**LOGO QTR ZIP KNIT**

This quarter zip knit comes in a dark gray marl, and uses Indian Motorcycle® branding on the front in black chain embroidery, for a subtle look.

Fabric: 100% cotton knit  
Graphics: Large embroidered logo on front; "Single 1901" embroidered on back neck; leather-look patch on right sleeve

**S-3XL**      **2867580**  
**US: \$89.99**      **CAN: \$119.99**



**ICON 1/4 ZIP FLEECE**

This black quarter zip fleece is made in a warm and soft fleece which retains heat, perfect for that added layer on a ride. The fleece also has 3M® reflective piping at the front, back and shoulder seams for extra visibility.

Fabric: 100% polyester fleece  
Graphics: Embroidered logo on front & back

**S-3XL**      **2868928**  
**US: \$79.99**      **CAN: \$104.99**





**RED BLACK PLAID SHIRT**

This lightweight long sleeve black and red shirt features an all over woven plaid, chest pocket and a button fastening. The plaid shirt is finished with a large embroidered Indian Motorcycle® script logo at the back and a patch at the front pocket and front hem.

Fabric: 100% brushed cotton  
Graphics: Leather-look patches at front hem & chest pocket; embroidered logo on back

**S-3XL**      **2868931**  
**US: \$69.99**    **CAN: \$89.99**



**GRAY BLACK PLAID SHIRT**

This lightweight long sleeve black and gray shirt features an all over woven plaid, twin chest pockets and a button fastening. The plaid shirt is finished with a small embroidered "Since 1901" at the back neck, chest embroidery, and front hem patch.

Fabric: 100% cotton  
Graphics: Leather-look patch at front hem; embroidered logo on front

**S-3XL**      **2868932**  
**US: \$69.99**    **CAN: \$89.99**



**BLACK PLAID SHIRT**

This heavyweight long sleeve black shirt features an all over woven plaid, chest pocket and a button fastener closure. The plaid shirt features a large embroidered Indian Motorcycle® headdress icon logo on the back and a patch at the front pocket and front hem.

Fabric: 100% brushed cotton  
Graphics: Leather-look patches at front hem & chest pocket; embroidered logo on back; "Since 1901" embroidery at back hem

**S-3XL**      **2868933**  
**US: \$69.99**    **CAN: \$89.99**



**SHOP SHIRT, ANTIQUE WHITE**

This shop shirt comes in a lightweight cotton, to keep you cool and comfortable. It features a large Indian Motorcycle® print at the back, and patches on both sleeves.

Fabric: 100% cotton  
Graphics: Embroidered logo on front; printed logo on back; woven patches on sleeves

**S-3XL**      **2867953**  
**US: \$59.99**    **CAN: \$79.99**



**SHOP SHIRT, RED**

This shop shirt comes in a lightweight cotton, to keep you cool and comfortable. It features a large Indian Motorcycle® print at the back, and patches on both sleeves.

Fabric: 100% cotton  
Graphics: Embroidered logo on front; printed logo on back; woven patches on sleeves

**S-3XL**      **2867952**  
**US: \$59.99**    **CAN: \$79.99**



**NAVY PLAID SHIRT**

This soft plaid shirt features two front pockets, embroidered Indian Motorcycle® logo at the back neck and a leather-look patch applied to the front hem. The buttons at the front fastening, pockets, and cuffs are all branded.

Fabric: 100% cotton  
Graphics: Embroidered logo at back neck; embroidered and applique logo on back; two leather-look patches on front; branded buttons

**S-3XL**      **2867586**  
**US: \$69.99**    **CAN: \$89.99**



**WASHED TWILL SHIRT**

Washed to create a worn-in look, this lightweight twill shirt boasts twin chest pockets and a felt and rubber patch at the center back, bringing a heritage feel to a classic design.

Fabric: 100% cotton twill  
Graphics: Leather-look patch on front pocket & hem; rubber/felt patch on back neck; "Since 1901" embroidery at back hem

**S-3XL**      **2868930**  
**US: \$69.99**    **CAN: \$89.99**



**RED PLAID SHIRT**

This soft plaid shirt features two front pockets, embroidered Indian Motorcycle® branding at the back neck and a leather-look patch applied to the front hem. The buttons at the front fastening, pockets, and cuffs are all branded.

Fabric: 100% cotton plaid  
Graphics: Embroidered logo on back and front; leather-look patch on front; branded buttons

**S-3XL**      **2868821**  
**US: \$64.99**    **CAN: \$84.99**



**CASUAL SHIRT**

Basic black with lots of style points including metal buttons on pockets and epaulets on this pit shirt.

Fabric: 65% polyester, 35% cotton  
Graphics: Embroidered Indian Motorcycle® logo on front & back

**S-5XL**      **2863698**  
**US: \$59.99**    **CAN: \$79.99**



**BOMBER GIRL SHIRT**

A button up shirt in navy and black featuring a large retro-style pin up girl print on back. A faux leather patch, chest pocket and small logo print on front add extra style.

Fabric: 100% cotton herringbone  
Graphics: Embroidered logo on front; "Since 1901" embroidered on sleeve; large bomber girl print on back

**S-3XL**      **2868820**  
**US: \$59.99**    **CAN: \$79.99**







**NEW**  
DIAMANTE TEE

This tee is made from a knitted jersey front with a contrasting longer length woven panel at the back. Exude glamour with the Indian Motorcycle® script logo made entirely from small silver rhinestones.

Fabric: Front- 100% cotton single jersey  
Back- 100% polyester  
Graphics: Large rhinestone logo on front; small script foil print on back neck  
Fit: Relaxed Fit

**XS-3XL**      **2869674**  
**US: \$49.99**    **CAN: \$67.99**



**NEW**  
FRINGE SLEEVE TEE

This black tee has fringe detailing at the shoulders and diamante rhinestones for a touch of bling. The Indian Motorcycle® logo is printed at the back neck in a silver foil finish.

Fabric: 50% cotton, 50% modal  
Graphics: Small foil print on back neck  
Fit: Close Fit

**XS-3XL**      **2869672**  
**US: \$44.99**    **CAN: \$59.99**



**NEW**  
IMC MARL TEE

A lightweight gray marl V-neck tee with lace ties at the side seams. An Indian Motorcycle® graphic is printed across the chest in an antique white, Indian Motorcycle® red and charcoal discharge ink.

Fabric: 50% cotton, 50% modal  
Graphics: Large graphic on front  
Fit: Relaxed Fit

**XS-3XL**      **2869669**  
**US: \$44.99**    **CAN: \$59.99**



**NEW**  
OPEN BACK ICON TEE

This Indian Motorcycle® tee presents the icon logo print with an inside-out effect. Wear this lightweight, breezy tee two ways: layer it on long and loose or tie up the back to secure in place.

Fabric: 100% viscose  
Graphics: Large print on front  
Fit: Relaxed Fit

**XS-3XL**      **2869670**  
**US: \$29.99**    **CAN: \$39.99**



**NEW**  
SIDE LACE TANK

A fashionable tank with contrast color charcoal fabric at the back and fringe detailing at the side seams. Side seams are stitched closed for modesty and the longer length back creates a stylish asymmetric shape. The Indian Motorcycle® icon headdress logo is printed across the chest and fades from red to charcoal.

Fabric: 50% cotton, 50% modal single jersey  
Graphics: Large print on front; small "Since 1901" print on back neck  
Fit: Relaxed Fit

**XS-3XL**      **2869678**  
**US: \$39.99**    **CAN: \$54.99**



**NEW**  
OPEN BACK TANK

This tank features a split at the center back, low enough to provide modesty. A gold, raised print using the Indian Motorcycle® script logo is placed across the chest.

Fabric: 65% polyester, 35% viscose slub jersey  
Graphics: Large high density logo on front  
Fit: Relaxed Fit

**XS-3XL**      **2869677**  
**US: \$34.99**    **CAN: \$46.99**





**NEW**  
**PORT SPARKLE TEE**

This tee uses a port color foil print for a subtle all over sparkle. The Indian Motorcycle® logo is printed across the chest in silver glitter print.

Fabric: 65% polyester, 35% rayon  
Graphics: Large glitter print logo on front; port foil print speckles across fabric  
Fit: Close Fit

**XS-3XL**      **2869671**  
**US: \$29.99**    **CAN: \$39.99**



**NEW**  
**WOMEN'S FTR™ 1200 LOGO TEE**

Celebrate the excitement and energy of the American Flat Track with this 1200 tee.

Fabric: 100% cotton single jersey  
Graphics: Large print on front; small logo at back neck  
Fit: Close Fit

**XS-3XL**      **2868973**  
**ECRU**        **2868972**  
**BLACK**      **2868972**  
**US: \$29.99**    **CAN: \$39.99**



**NEW**  
**STRIPE SLEEVE TEE**

Celebrate the Indian Motorcycle® brand with this full color hand painted headdress print across the chest with matching sleeve stripes. This tee comes in a light single jersey and features a heavy enzyme wash creating a vintage look.

Fabric: 100% cotton single jersey  
Graphics: Large print on front; printed sleeve stripes; small logo print on back neck  
Fit: Close Fit

**XS-3XL**      **2869673**  
**US: \$44.99**    **CAN: \$59.99**



**NEW**  
**PORT HENLEY**

Designed with a sweetheart neckline, this is a flattering shape for all sizes. Made in a garment dyed cotton, this tee has a subtle fading effect at the seams adding a vintage feel.

Fabric: 100% cotton single jersey  
Graphics: Small embroidery on front; "Since 1901" embroidered on back neck  
Fit: Close Fit

**XS-3XL**      **2869675**  
**US: \$44.99**    **CAN: \$59.99**



**NEW**  
**LOGO RAGLAN TEE**

Made in a soft slub jersey, this 3/4 sleeve raglan tee in moss gray and charcoal will be a casual staple during the upcoming weather transition months.

Fabric: 100% cotton slub jersey  
Graphics: Large graphic on front; small logo on back neck; woven patch on right sleeve  
Fit: Relaxed Fit

**XS-3XL**      **2869676**  
**US: \$39.99**    **CAN: \$49.99**



**3 QTR SLEEVE HENLEY**

This antique white tee features contrasting Indian Motorcycle® red sleeves with a large back badge celebrating Indian Motorcycle® as America's first motorcycle company.

Fabric: 100% cotton single jersey  
Graphics: Small logo on chest; large print on back  
Fit: Relaxed Fit

**XS-3XL**      **2868936**  
**US: \$39.99**    **CAN: \$49.99**



**CONTRAST ICON TEE**

A lightweight red marl tee with contrast gray marl sleeves and applied arm stripes in antique white. The Indian Motorcycle® icon is printed on the back in a white water-based print.

Fabric: 100% cotton single jersey  
Graphics: Logo print on front & back; antique white sleeve stripes  
Fit: Close Fit

**XS-3XL**      **2868940**  
**US: \$34.99**    **CAN: \$46.99**



**IMC BIKE RAGLAN TEE**

This flattering V-neck tee features a bike print across the back in a distressed water-based ink to create a retro style.

Fabric: 100% cotton single jersey  
Graphics: Small script logo on chest; large distressed print on back  
Fit: Relaxed Fit

**XS-3XL**      **2868941**  
**US: \$34.99**    **CAN: \$46.99**





**NEW**

**QUICK DRY TANK**

This tank offers UV protection SPF50, quick dry and high wicking properties to keep you cool and dry on summer rides.

Fabric: 100% polyester  
Graphics: Large headdress logo print on front; small logo on back neck  
Fit: Close Fit

**XS-3XL**      **2869679**  
**US: \$44.99**    **CAN: \$59.99**



**LOGO CAMI, BLACK**

This simple black cami is great for layering under your favorite tees and sweats. This style is cut for a fit close to the body, and has printed branding at both the back, and the front chest. Straps are adjustable for a perfect fit.

Fabric: 95% cotton, 5% spandex  
Graphics: Distressed logo on front & back  
Fit: Close Fit

**XS-3XL**      **2867574**  
**US: \$25.99**    **CAN: \$35.49**



**SNOW WASH TANK, GRAY**

This relaxed fit sleeveless gray tank is made using a snow wash to create a 'mottling finish' resulting in a vintage, retro look. The tank features an Indian Motorcycle® glitter print across the chest and back neck.

Fabric: 100% cotton single jersey  
Graphics: Glitter print on front; small glitter print on back neck  
Fit: Relaxed Fit

**XS-3XL**      **2868938**  
**US: \$29.99**    **CAN: \$39.99**



**IMC STUDS TANK**

On this V-neck tank the fabric has been garment dyed, which gives an inconsistent and faded look adding a vintage feel. Foil prints in silver and gold, and metal studs are used on the front graphic.

Fabric: 100% cotton single jersey  
Graphics: Large foil print with stud detail on front; small foil logo print on back  
Fit: Relaxed Fit

**XS-3XL**      **2868798**  
**US: \$29.99**    **CAN: \$39.99**



**ICON TANK, BLACK**

This tank comes in a flattering ribbed fabric and a comfortable, relaxed fit. The Indian Motorcycle® icon is printed on the front in a white water-based print.

Fabric: 65% polyester, 35% rayon rib  
Graphics: Distressed icon print on front  
Fit: Relaxed Fit

**XS-3XL**      **2866286**  
**US: \$29.99**    **CAN: \$39.99**



**FRINGE TANK**

This tank comes in a cotton/modal mix for a flattering fit. A simple black Indian Motorcycle® headdress is printed across the chest. Fringe detailing at the back gives this style a cool edge.

Fabric: 50% cotton, 50% modal  
Graphics: Large printed logo on front; fringe detail on back  
Fit: Relaxed Fit

**XS-3XL**      **2868799**  
**US: \$29.99**    **CAN: \$39.99**



**HEADRESS TANK, PORT**

This port color tank comes in a stretch fabric and is cut for a close and flattering fit to the body. A simple black Indian Motorcycle® headdress is printed across the chest using a discharge print.

Fabric: 50% cotton, 46% modal, 4% spandex  
Graphics: Distressed headdress print on front; small script logo on back neck  
Fit: Close Fit

**XS-3XL**      **2868939**  
**US: \$29.99**    **CAN: \$39.99**



**COLD SHOULDER TEE**

Add a twist to a casual wardrobe with this cold shoulder black tee. Made in a cotton/modal mix, this style features an embroidered Indian Motorcycle® headdress logo at the front chest.

Fabric: 50% cotton, 50% modal  
Graphics: Large embroidered logo on front; "Since 1901" on back neck  
Fit: Relaxed Fit

**XS-3XL**      **2868934**  
**US: \$39.99**    **CAN: \$54.99**



**ECRU LOGO V-NECK TEE**

This V-neck tee comes in a stretch fabric, and is cut for a close fit to the body. A large distressed Indian Motorcycle® logo is printed across the front.

Fabric: 95% cotton, 5% spandex stretch single jersey  
Graphics: Distressed Indian Motorcycle® logo on the front; patch with graphics on the sleeve  
Fit: Close Fit

**S-3XL**      **2863325**  
**US: \$29.99**    **CAN: \$39.99**



**STUD SHOULDER TEE**

This black tee comes in a cotton/modal mix for a flattering fit. The raglan sleeves are covered in bronze studs and small logos are placed at the front hem and back neck in gold foil print.

Fabric: 50% cotton, 50% modal single jersey  
Graphics: Stud detail on shoulders; small foil print logo on back  
Fit: Relaxed Fit

**XS-3XL**      **2868800**  
**US: \$39.99**    **CAN: \$54.99**



**BLACK HEADRESS TEE**

This V-neck tee comes in a stretch fabric, and is cut for a close fit to the body. A large Indian Motorcycle® headdress is printed across the front, in a hand painted style.

Fabric: 95% cotton, 5% spandex stretch single jersey  
Graphics: Distressed Indian Motorcycle® logo on front  
Fit: Close Fit

**XS-3XL**      **2867954**  
**US: \$29.99**    **CAN: \$39.99**



**LS BLACK CROSSOVER TEE**

A long sleeved stretch tee, with crossover detail at the front, and gathered side panel for a flattering fit. A small Indian Motorcycle® logo is printed in a metallic silver at the front hem, and at the back neck in silver foil print with rhinestones.

Fabric: 100% rayon  
Graphics: Small foil print on front hem, small foil print with rhinestones on back  
Fit: Close Fit

**XS-3XL**      **2867955**  
**US: \$34.99**    **CAN: \$46.99**





**NEW**  
**CASUAL HOODIE**

This pullover hoodie features an Indian Motorcycle® port color glitter print on the chest and hood. Designed with a dropped back hem.

Fabric: 70% cotton, 30% polyester loopback  
Graphics: Large logo on front; small logo on hood

**XS-3XL**      **2869680**  
**US: \$69.99**    **CAN: \$89.99**



**NEW**  
**LOGO ZIP HOODIE**

This zip up hoodie is made in a flattering port marl color and features a silver exposed center front zip with Indian Motorcycle® prints on the sleeve, chest and hood.

Fabric: 70% cotton, 30% polyester loopback  
Graphics: Small logo print on front; large print on sleeve & hood

**XS-3XL**      **2869681**  
**US: \$79.99**    **CAN: \$104.99**



**LOGO ZIP THRU**

This cozy all cotton zip thru features antique white and navy contrasting panels in a knit finish. It has hand warmer pockets and Indian Motorcycle® branding on the front chest and back.

Fabric: 100% cotton knit  
Graphics: Embroidered logo on front; embroidered & applique logo on back  
Care: Fold, do not hang

**XS-3XL**      **2865202**  
**US: \$79.99**    **CAN: \$104.99**



**RED PLAID SHIRT**

A soft cotton, wardrobe staple with adjustable sleeve that can be worn 3/4 length or full length. This shirt comes in a slim, flattering fit.

Fabric: 100% cotton plaid  
Graphics: Embroidered logo on back  
Additional Features: Branded buttons; faux leather patch on chest pocket  
Fit: Close Fit

**XS-3XL**      **2868805**  
**US: \$59.99**    **CAN: \$79.99**



**COLOR BLOCK SHIRT**

A classic flat collar bowling style shirt. This shirt features strong branding, with a large back embroidery, two sleeve patches, and a small chest embroidery.

Fabric: 65% polyester, 35% cotton  
Graphics: Embroidered logo on front & back; branded patches on left and right sleeve

**XS-3XL**      **2866156**  
**US: \$59.99**    **CAN: \$79.99**



**ICON SHIRT, BLACK**

In a black stretch cotton, this shirt is a wardrobe staple for any Indian Motorcycle® fan.

Fabric: 98% cotton, 2% spandex  
Graphics: Embroidered logo on front; large woven patch on back  
Fit: Close Fit

**XS-3XL**      **2867958**  
**US: \$59.99**    **CAN: \$79.99**



**QUILT STITCH HOODIE**

This red and gray marl fleecelback hoodie features diamond shaped topstitching detail at the hood and printed fabric stripes on the sleeve. An Indian Motorcycle® icon headdress logo is embroidered on the back and a small logo is embroidered at the front chest.

Fabric: 70% cotton, 30% polyester  
Graphics: Logo embroidery on front & back

**XS-3XL**      **2868942**  
**US: \$69.99**    **CAN: \$89.99**



**LOGO SWEAT**

This classic navy sweat features subtle Indian Motorcycle® branding across the front in navy applique and embroidery. A small embroidery is placed at the back neck.

Fabric: 100% cotton loopback  
Graphics: Embroidered & applique logo on front; embroidered logo on back; "Since 1901" on back hem

**XS-3XL**      **2868944**  
**US: \$69.99**    **CAN: \$89.99**



**IMC CONTRAST ZIP THRU**

This classic gray marl zip-thru with contrast sleeves features a felt applique logo at the back, an embroidered script logo at the front chest and a headdress logo patch at the sleeve. This zip-thru is made in a soft cotton polyester mix and features a stylish collar.

Fabric: 70% cotton, 30% polyester  
Graphics: Embroidered logo on front; embroidered & applique logo on back; woven patch on right sleeve; leather look patch at hem  
Additional Features: Branded buttons & zippers

**XS-3XL**      **2868943**  
**US: \$64.99**    **CAN: \$84.99**



**LONG SLEEVE BODYSUIT 3 PACK**

Your little riders can show their Indian Motorcycle® pride with this Long Sleeve Bodysuit 3 pack. They provide comfortable coverage and feature distinctive Indian Motorcycle® branding.

Fabric: 100% cotton single jersey  
Graphics: Printed logo on front & back; 3 pack of navy, red & white

SIZE:	PART #:
3-6 MONTHS/ S	286880102
6-12 MONTHS/ M	286880103
12-18 MONTHS/ L	286880106
<b>US: \$44.99</b>	<b>CAN: \$59.99</b>



**SHORT SLEEVE BODYSUIT 3 PACK**

Your little riders can show their Indian Motorcycle® pride with this Short Sleeve Bodysuit 3 pack. They come in a lightweight fabric to keep your little one cool and feature distinctive Indian Motorcycle® branding.

Fabric: 100% cotton single jersey  
Graphics: Printed logo on front & back; 3 pack of navy, red & white

SIZE:	PART #:
3-6 MONTHS/ S	286880202
6-12 MONTHS/ M	286880203
12-18 MONTHS/ L	286880206
<b>US: \$39.99</b>	<b>CAN: \$54.99</b>



**LOGO TEES 2 PACK**

Your little riders can show their Indian Motorcycle® pride with this short sleeve tee 2 pack. Featuring distinctive Indian Motorcycle® branding.

Fabric: 100% cotton single jersey  
Graphics: Printed logo on front & back; 2 pack of navy & white

SIZE:	PART #:
2-3 YEARS/ XS	286886701
3-4 YEARS/ S	286886702
4-5 YEARS/ M	286886703
5-6 YEARS/ L	286886706
<b>US: \$39.99</b>	<b>CAN: \$54.99</b>

JUNIORS



## INDIAN MOTORCYCLE® EYEWEAR

The Indian Motorcycle® eye-wear range has been developed to look great and also perform when riding. All styles are CE certified and have lightweight frames and shatter resistant lenses, which also include UVA/UVB filters, anti-fog coatings and are scratch resistant.

The Highway, Lifestyle, Performance & Semi-Pro sunglasses are also prescription ready. 7eye by Panoptix provides repair services and prescription lenses at additional cost. Please consult local laws regarding overseas made prescription lenses. For quotations, please contact 7eye by Panoptix USA at (001) 909-509-8228 or info@7eye.com



**NEW**  
ATLANTA SUNGLASSES CE

Add a hint of color with these matte framed sunglasses with blue rubber details on the earpieces.

Frame: Lightweight 100% polycarbonate matte black frame with blue rubber details on the earpieces  
Lens: 6R Curve Gray Polycarbonate lens+Blue Revo coating  
Additional features: 100% UVA+UVB protection, shatter-resistant.  
CE certified; EU Regulation 2016/425. EN ISO 12312-1:2013+A1:2015 Lens Filter Category 3

ONE SIZE 2869714  
US: \$29.99 CAN: \$41.99



**NEW**  
PHOENIX SUNGLASSES CE

These brown sunglasses are a versatile and stylish accessory you can wear with any kind of outfit.

Frame: Lightweight 100% polycarbonate gloss tortoise shell frame with antique brass Indian Motorcycle® logo  
Lens: 6R Polycarbonate Gradient Brown lens  
Additional features: 100% UVA+UVB protection, shatter-resistant.  
CE certified; EU Regulation 2016/425. EN ISO 12312-1:2013+A1:2015 Lens Filter Category 3

ONE SIZE 2869715  
US: \$29.99 CAN: \$41.99



**NEW**  
LIBERTY SUNGLASSES CE

Be bold with these frames ideal for riding. Comes with branded zipper case and microfiber cloth.

Frame: Lightweight 100% polycarbonate glossy black frame with antique brass logo  
Lens: Brown polycarbonate lens  
Additional features: 100% UVA+UVB protection, shatter-resistant, anti-fog coating, non-detachable EVA foam eyecup to reduce wind and peripheral light for a more comfortable ride.  
CE certified; Directive 89/686/EEC. EN ISO 12312-1:2013+A1:2015 Lens Category 1.

ONE SIZE 2869646  
US: \$39.99 CAN: \$55.99



**NEW**  
FREEWAY SUNGLASSES CE

Ride confident with our clear lens Freeway Sunglasses which feature an eyecup to reduce wind. Comes with branded zipper case and microfiber cloth.

Frame: Lightweight TR90 Nylon glossy black frame  
Lens: Clear polycarbonate lens  
Additional features: 100% UVA+UVB protection, shatter-resistant, anti-fog coating, non-detachable EVA foam eyecup to reduce wind and peripheral light for a more comfortable ride.  
CE certified; Directive 89/686/EEC. EN ISO 12312-1:2013+A1:2015 Lens Category 1

ONE SIZE 2869647  
US: \$29.99 CAN: \$41.99



**NEW**  
HIGHWAY SUNGLASSES CE

The Highway Sunglasses offer superior performance levels. Made from a lightweight and hard wearing nylon frame with polycarbonate lens. Comes with branded zipper case and microfiber cloth.

Frame: Lightweight TR90 Nylon glossy black frame  
Lens: Clear polycarbonate lens  
Additional features: 100% UVA+UVB protection, shatter-resistant, detachable EVA foam eyecup. Prescription Ready.  
CE certified; EU Regulation 2016/425. EN ISO 12312-1:2013+A1:2015 Lens Filter Category 3. Impact Resistance Level 2

ONE SIZE 2869648  
US: \$59.99 CAN: \$79.99



ICON SUNGLASSES CE

Ride confident with our yellow lens sunglasses. The color negates oncoming headlights and make surroundings appear brighter in dull conditions.

Frame: Lightweight 100% polycarbonate matte black frame  
Lens: Yellow polycarbonate lens  
Additional features: 100% UVA+UVB protection, shatter-resistant, anti-fog coating, non-detachable EVA foam eyecup to reduce wind & peripheral light for a more comfortable ride.  
CE certified; Directive 89/686/EEC. EN ISO 12312-1:2013+A1:2015 Lens Filter Category 0

ONE SIZE 2868696  
US: \$29.99 CAN: \$41.99



SHADOW SUNGLASSES CE

Be ride ready with the Shadow Sunglasses. Featuring a detachable EVA foam eye cup that is ideal for riding and casual use.

Frame: Lightweight 100% polycarbonate glossy black frame with matte temple design  
Lens: Gray polycarbonate lens  
Additional features: 100% UVA+UVB protection, shatter-resistant, anti-fog coating, detachable EVA foam eyecup to reduce wind and peripheral light for a more comfortable ride.  
CE certified; Directive 89/686/EEC. EN ISO 12312-1:2013+A1:2015 Lens Filter Category 3

ONE SIZE 2868846  
US: \$39.99 CAN: \$55.99



ENTRY SUNGLASSES CE

These sunglasses are designed to be worn when riding and include an EVA foam eyecup to reduce wind and peripheral light.

Frame: Lightweight TR90 Nylon matte black frame  
Lens: Gray polycarbonate lens  
Additional features: 100% UVA+UVB protection, shatter-resistant, anti-fog coating, non-detachable EVA foam eyecup to reduce wind & peripheral light for a more comfortable ride.  
CE certified; Directive 89/686/EEC. EN ISO 12312-1:2013+A1:2015 Lens Filter Category 3

ONE SIZE 2863996  
US: \$29.99 CAN: \$39.99



LEGENDARY SUNGLASSES CE

Be bold and legendary with these frames ideal for riding.

Frame: Lightweight 100% polycarbonate glossy black & white patterned frame  
Lens: Gray polycarbonate lens  
Additional features: 100% UVA+UVB protection, shatter resistant, anti-fog coating, non-detachable EVA foam eyecup to reduce wind and peripheral light for a more comfortable ride.  
CE certified; Directive 89/686/EEC. EN ISO 12312-1:2013+A1:2015 Lens Filter Category 3

ONE SIZE 2868697  
US: \$39.99 CAN: \$55.99



SPIRIT SUNGLASSES CE

Add a hint of color with these midnight blue framed sunglasses with rubber nose protector.

Frame: Lightweight 100% polycarbonate glossy dark blue frame  
Lens: Gray polycarbonate lens  
Additional features: 100% UVA+UVB protection, shatter-resistant, anti-fog coating.  
CE certified; Directive 89/686/EEC. EN ISO 12312-1:2013+A1:2015 Lens Filter Category 3

ONE SIZE 2868847  
US: \$29.99 CAN: \$41.99



LIFESTYLE SUNGLASSES CE

The Lifestyle Sunglasses look great on or off the bike, made from lightweight polycarbonate frame and with a shatter resistant UVA/UVB lens.

Frame: Lightweight polycarbonate matte black frame  
Lens: Brown polycarbonate lens  
Additional features: 100% UVA+UVB protection, shatter resistant, anti-fog coating. Prescription ready.  
CE certified; Directive 89/686/EEC. EN ISO 12312-1:2013+A1:2015 Lens Filter Category 3

ONE SIZE 2863973  
US: \$29.99 CAN: \$39.99





LIBERTY SUNGLASSES  
PAGE 58



PERFORMANCE SUNGLASSES **CE**

The riders choice, the Performance Sunglasses offer a wide range of features for your riding needs. From the high quality, lightweight Rochflex frame to the quick reacting photochromic lens that changes from clear to gray depending on the light. The PU foam eye-cup offers superior wind and peripheral light protection.

Frame: Quality lightweight RochFlex glossy black frame  
Lens: Photochromic Eclipse polycarbonate lens changes from clear to gray in 50 secs. Transition time is 60-90 secs.  
Additional features: 100% UVA+UVB protection, shatter-resistant, anti-fog coating, detachable latex-free PU foam eyecup with sweat resistant patented rubber-seal on top of foam. Prescription ready.  
CE certified; Directive 89/686/EEC. EN ISO 12312-1:2013+A1:2015  
Lens Filter Category 3. Impact Resistance Level 2.

ONE SIZE 2864405  
US: \$99.99 CAN: \$129.99



SEMI PRO SUNGLASSES **CE**

The Semi Pro sunglasses offer superior performance levels. Made from a lightweight and hard wearing nylon frame with a polycarbonate lens.

Frame: Lightweight TR90 Nylon matte black frame  
Lens: Gray polycarbonate lens  
Additional features: 100% UVA+UVB protection, shatter-resistant, detachable EVA foam eyecup. Prescription ready.  
CE certified; EU Regulation 2016/425. EN ISO 12312-1:2013+A1:2015  
Lens Filter Category 3. Impact Resistance Level 2

ONE SIZE 2864404  
US: \$59.99 CAN: \$79.99



IMC GOGGLE **CE** **100%**

This custom Barstow goggle is a stylish and professional collaboration with 100%, featuring the custom jacquard logo of Indian Motorcycle® on the adjustable strap and etched logo on lens. It is equipped with triple-layer face foam providing excellent moisture management in the move and the gray anti-fog Lexan lens with integrated pins for seamless tear off application. The upper vents in signature red force air in and channel out moisture to reduce fogging. CE certified; Directive 89/686/EEC. EN 1836:2005+A1:2007 Lens Filter Category 1.

ONE SIZE 2868961  
US: \$99.99 CAN: \$129.99



SACRAMENTO JACKET  
PAGE 12





**CIRCLE ICON TRUCKER HAT**  
AVAILABLE FOR DELIVERY NOW

Graphics: Embroidered logo  
Features: Adjustable plastic closure; mesh back

**ONE SIZE** 2868694  
US: \$19.99 CAN: \$26.99



**QUALITY TRUCKER HAT**  
AVAILABLE FOR DELIVERY NOW

Graphics: Embroidered patch on front; embroidered "Since 1901" on back  
Features: Adjustable plastic closure; mesh back

**ONE SIZE** 2862313  
US: \$19.99 CAN: \$26.99



**CIRCLE PATCH HAT**  
AVAILABLE FOR DELIVERY NOW

Graphics: Embroidered icon graphic on front; graphic patch on the side  
Features: Adjustable strap with metal clasp

**ONE SIZE** 2863628  
US: \$19.99 CAN: \$26.99



**NEW**  
**BLOCK PATCH HAT**

Graphics: Embroidered patch on front  
Features: Adjustable plastic closure; mesh back

**ONE SIZE** 2869641  
US: \$19.99 CAN: \$26.99



**NEW**  
**SCRIPT ICON TRUCKER HAT**

Graphics: Embroidered patch on front  
Features: Six panel truck hat; adjustable plastic closure; mesh back; contrast brim

**ONE SIZE** 2869639  
US: \$19.99 CAN: \$26.99



**NEW**  
**PORT MARL HAT**

Graphics: Oil based print  
Features: Adjustable plastic closure; mesh back

**ONE SIZE** 2869640  
US: \$19.99 CAN: \$26.99



**BLACK LOGO HAT**  
AVAILABLE FOR DELIVERY NOW

Graphics: Embroidered Indian Motorcycle® logo on front; screen printed logo on back  
Features: Adjustable Velcro® closure

**ONE SIZE** 2863727  
US: \$19.99 CAN: \$26.99



**BIG SIZES**  
**IMC FLEX FIT HAT**  
AVAILABLE FOR DELIVERY NOW

Graphics: Rubber logo on front; woven patch on back  
Features: Flat skip style available in two sizes

**S/M** 286869203  
**L/XL** 286869206  
US: \$19.99 CAN: \$26.99



**HEADDRESS LOGO HAT**  
AVAILABLE FOR DELIVERY NOW

Graphics: Embroidered patch  
Features: Adjustable plastic closure; flat skip style; mesh back

**ONE SIZE** 2867609  
US: \$19.99 CAN: \$26.99



**NEW**  
**FTR™ 1200 TRUCKER HAT**

Graphics: FTR™ 1200 oil based print  
Features: Adjustable plastic closure; mesh back

**ONE SIZE** 2868958  
US: \$19.99 CAN: \$26.99



**CHECKERED HAT**  
AVAILABLE FOR DELIVERY NOW

Graphics: High density 3D script logo print  
Features: Flat skip style with checker print; adjustable plastic closure; mesh back

**ONE SIZE** 2868959  
US: \$19.99 CAN: \$26.99



**GRAY ARMY HAT**  
AVAILABLE FOR DELIVERY NOW

Graphics: Embroidered logo  
Features: Adjustable strap with metal clasp

**ONE SIZE** 2868945  
US: \$19.99 CAN: \$26.99



**BAKER BOY HAT**

Graphics: Embroidered logo on back  
Features: Baker boy style in wool & polyester herringbone fabric; quilted interior; snap down peak; available in two sizes

**S/M** 286896003  
**L/XL** 286896006  
US: \$24.99 CAN: \$32.99



**ICON HEAD WRAP**

Embroidered patch logo at front and embroidered stitching at rear. Tie fasten back for close fit.

Graphics: Woven patch on front; embroidered script logo at rear  
Features: Tie fasten

**ONE SIZE** 2867606  
US: \$19.99 CAN: \$26.99



**HEAD WRAP**

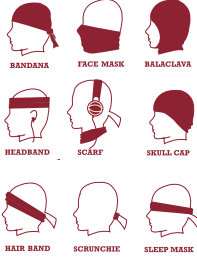
All-day comfort and classic rider style. Enhances comfort when worn inside a helmet. There are Indian Motorcycle® logos on the front and back, and an adjustable tie closure at the back.

Graphics: Printed script logo on front; headdress logo on back  
Features: Tie fasten

**ONE SIZE** 2863844  
US: \$19.99 CAN: \$26.99



# INDIAN MOTORCYCLE® HEADGEAR



**NEW**

## HEADRESS MULTIFUNCTIONAL HEADWEAR

Multifunctional stretchy headwrap with large branding. Wear it in your own style.

Graphics: Tiled logos  
Features: Nine reference styles provided

**ONE SIZE** 2869642  
**US: \$14.99** **CAN: \$19.99**

## MULTIFUNCTIONAL HEADWEAR

Multifunctional stretchy headwrap with all over logo print. Wear it in your own style.

Graphics: Tiled logos  
Features: Nine reference styles provided

**ONE SIZE** 2865233  
**US: \$14.99** **CAN: \$19.99**



## INDIAN MOTORCYCLE® BANDANA

A soft, stylish bandana featuring a repeating pattern of branded graphics on a full-sized bandana that can be worn or used in many ways. 23.6" (60cm) x 23.6" (60cm).

Graphics: Printed script & headress logos

**ONE SIZE** 2863846  
**US: \$14.99** **CAN: \$19.99**



## NEW DOG COLLAR

This black leather dog collar is lined with soft, quick dry neoprene for a comfortable fit. Silver reflective, secure buckle with engraved logo and D ring and 5 punch holes. Available in two sizes. Size S/M: 1" (2.5cm) wide x 12.2" - 15.7" (31cm - 40cm) adjustable length. Size L/XL: 1.8" (3.5cm) wide x 16.1" - 19.7" (41cm - 50cm) adjustable length.

**S/M** 286969503  
**L/XL** 286969506  
**US: \$39.99** **CAN: \$54.99**



## NEW DOG LEASH

Soft black leather, made to stand up to any active dog and their human. Design features neoprene lined handle for ultimate comfort. Secure chunky antique silver buckle with spring mechanism and embossed branding. 0.8" (2cm) wide x 63" (160cm) tall.

**ONE SIZE** 2869696  
**US: \$39.99** **CAN: \$54.99**



## NEW PET BANDANA - 2 PACK

Give your pet real Indian Motorcycle® style. Set includes two different graphics with repeating pattern of branded logos. Available in two sizes. Size S/M: 15.7" (40cm) square. Size L/XL: 19.7" (50cm) square.

**S/M** 286969703  
**L/XL** 286969706  
**US: \$24.99** **CAN: \$32.99**



## BE LEGENDARY™ BANDANA

Two way bandana print - fold in half for two different styles as you wish. 23.6" (60cm) x 23.6" (60cm).

Graphics: Tiled script logo & large icon logo

**ONE SIZE** 2867608  
**US: \$14.99** **CAN: \$22.99**



## NEW HEADRESS HEAD TIE

Made from cotton with a discharge print. Elasticated rear band for close fit.

Graphics: Printed logos  
Features: Elastic band at back

**ONE SIZE** 2869643  
**US: \$14.99** **CAN: \$19.99**



## HEAD TIE

This cotton head tie features large branding and an elasticized rear band for a comfortable fit. It also ties in the back.

Graphics: Discharge logo print  
Features: Elastic band & tie fasten for adjustability

**ONE SIZE** 2865234  
**US: \$14.99** **CAN: \$19.99**



## NEW DOG TEE - 2 PACK

This branded 100% cotton dog tee with comfortable coverage allows your pet to show off Indian Motorcycle® pride. Set includes two different graphics with script & icon logos. Available in three sizes. See size chart below.

**SMALL** 286969802  
**MEDIUM** 286969803  
**LARGE** 286969806  
**US: \$29.99** **CAN: \$39.99**



## NEW FEEDING BOWL - 2 PACK

Our Indian Motorcycle® stainless steel dog bowl is perfect to feed your hungry pet. Bowls have printed logo, rubber bottom and polished finish for long-lasting beauty. Set includes two sizes: 16oz & 32oz.

**16oz. & 32oz.** 2869699  
**US: \$29.99** **CAN: \$39.99**



## NEW SQUEAK BALL - 5 PACK

Keep your pet happy with set of five Indian Motorcycle® Squeak Tennis Balls. Made from a tough tennis ball material with built in squeaker, they float in water making them perfect whatever your surroundings. 2.5" (6.4cm) wide.

**2.5"** 2869700  
**US: \$19.99** **CAN: \$26.99**



## ICON FLEECE BEANIE

Debossed icon logo at side, embroidered logos on front and back, made of polyester fleece shell fabric and jersey lining.

Graphics: Embroidered logo, debossed graphics

**ONE SIZE** 2863997  
**US: \$24.99** **CAN: \$32.99**



## ICON FLEECE NECK WARMER

Two debossed logos on sides, embroidered logos on front, made of polyester fleece shell fabric and jersey lining with elastic toggle.

Graphics: Embroidered logo, debossed graphics  
Features: Toggle adjuster

**ONE SIZE** 2863998  
**US: \$24.99** **CAN: \$32.99**

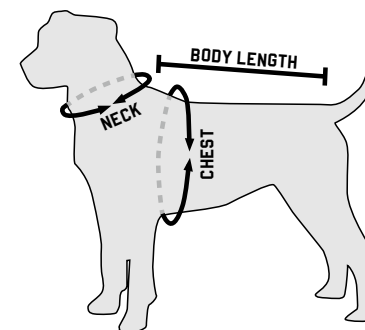


## SCRIPT ICON SKULL WRAP

All over script logo print in tonal black. Elastic and tie at rear for a close fit.

Graphics: Felted patch on front; all over tonal black script logo print; embroidered script logo at rear  
Features: Tie fasten

**ONE SIZE** 2867607  
**US: \$19.99** **CAN: \$26.99**



DOG TEE					
SIZE	S		M		L
	IN	CM	IN	CM	IN
Neck Width	6.1	15.5	6.9	17.5	7.7
Chest	18.2	46	22	56	26
Back Length	12.2	31	15.2	38.5	18.1



## NEW CHEW TOY

This branded 100% natural rubber Indian Motorcycle® Chew Toy comes in a great shape for flinging, tugging and chewing. Great for dogs who love the standard bone shape. 2.8" (7cm) wide x 7.1" (18cm) tall.

**2.8" x 7.1"** 2869701  
**US: \$16.99** **CAN: \$22.99**



## NEW PULL TOY

Our shaped rubber Indian Motorcycle® tank Pull Toy will provide interactive fun for you and your dog. The rugged ropes will help keep gums and teeth clean and healthy. The tank has star shaped holes on each end so you can stuff your pet with treats. 7.1" (18cm) tall.

**7.1"** 2869702  
**US: \$25.99** **CAN: \$35.49**





### WAXED COTTON BACKPACK

This waxed cotton backpack is stylish and large enough to carry everything from a laptop to a rain suit and much more. This backpack features premium heavy-duty waxed cotton canvas with leather trim and adjustable shoulder straps. Additional features include; fleece-lined laptop pocket, magnet closing on pockets and durable brass zippers. Bag dimensions: 19" (48cm) high x 13.3" (34cm) wide x 6.5" (17cm) deep.

**ONE SIZE**      **2868686**  
US: \$119.99      CAN: \$155.99



### WAXED COTTON DUFFLE BAG

This large duffle is durable and designed to carry a wide variety of gear. This bag features premium heavy-duty waxed cotton canvas with leather trim. The large main cargo space closes with a heavy-duty brass zipper. Bag dimensions: 12.5" (32cm) high x 20" (51cm) wide x 9.4" (24cm) deep.

**ONE SIZE**      **2868687**  
US: \$139.99      CAN: \$179.99



### WAXED COTTON MESSENGER BAG

This durable messenger bag is large enough to carry most laptops with 15" displays. This bag features premium heavy-duty waxed cotton canvas, and leather trim. Comes with an adjustable shoulder strap, and multiple interior pockets. Fleece-lined laptop compartment. Bag dimensions: 11.8" (30cm) high x 15" (38.5cm) wide x 5.4" (14cm) deep.

**ONE SIZE**      **2868688**  
US: \$119.99      CAN: \$155.99



### WAXED COTTON WASH BAG

A classic wash bag takes on extra style with Indian Motorcycle® branding. This durable waxed cotton canvas bag features embossed leather Indian Motorcycle® branding and branded zipper pull. This bag is lined and roomy enough to carry toiletries or be used to carry other small items. Bag dimensions: 7.5" (19cm) high x 16" (40cm) wide x 6" (15cm) deep.

**ONE SIZE**      **2868690**  
US: \$39.99      CAN: \$55.99



**NEW**

### WOMEN'S CROSS BODY BAG

An everyday stylish way to carry small and medium items: keys, wallet, phone, glasses, notebook, and more. This premium leather bag has a debossed Indian Motorcycle® headaddress logo on the flap and 100% cotton fabric lining. The flap closes securely with magnetic snap buttons on both edges. The shoulder strap is adjustable and removable. This bag comes with a soft dust bag, perfect for gift giving. Bag dimensions: 11" (28cm) wide x 6.3" (16cm) high x 4.3" (11cm) deep.

**ONE SIZE**      **2869644**  
US: \$119.99      CAN: \$154.99



### WAXED COTTON TOTE

This waxed cotton women's tote is a stylish and durable option made of a premium heavy-duty waxed cotton canvas with leather trim and adjustable shoulder straps. Additional features include; internal zip pocket, magnetic closing on pockets and flap, protective zip on main compartment using a durable brass zipper. Bag dimensions: 14" (36cm) high x 18" (4cm) wide x 6" (15cm) deep.

**ONE SIZE**      **2868689**  
US: \$99.99      CAN: \$129.99



### WOMEN'S QUILTED PURSE

This women's purse features soft black leather, quilted panels, branded lining and multiple compartments. 3.9" (10cm) high x 7.7" (19.5cm) wide.

**ONE SIZE**      **2868946**  
US: \$69.99      CAN: \$89.99



**NEW**

### TRI-FOLD WALLET, BLACK

This premium black leather Tri-Fold Wallet provides a spacious, efficient, secure, and stylish way to carry valuables. There's a long pocket for currency and several stacked slot pockets in which cards can be stored and remain visible for quick access. Features branded 100% cotton lining and embossed logo. This wallet comes with a branded gift box. 4.3" (11cm) high x 3.7" (9.5cm) wide.

**ONE SIZE**      **2869645**  
US: \$39.99      CAN: \$55.99



### BI-FOLD WALLET, BLACK

This wallet features high quality leather, embossed brand logo and branded lining. 3.7" (9.5cm) high x 4.3" (11cm) wide.

**ONE SIZE**      **2867600**  
US: \$39.99      CAN: \$55.99



### BIKER CHAIN WALLET, BLACK

This wallet features high quality leather, embossed brand logo, branded lining, multiple compartments and a heavy metal chain. 3.7" (9.4cm) high x 7" (17.8cm) wide.

**ONE SIZE**      **2867599**  
US: \$59.99      CAN: \$83.99



### LEATHER FOB KEY CARRIER

Real leather pouch to carry your bike key FOB in style. Embossed lock and unlock detailing at the back so you don't have to remove the key to use. Magnetic snap fastener included. (Key FOB not included.) 5.5cm x 5.5cm.

**ONE SIZE**      **2867558**  
US: \$19.99      CAN: \$29.99





**NEW**

### 2 IN 1 HEADDRESS STOPPER

Enjoy wine without the troubles of too many gadgets laying around. This 2-in-1 Headdress Corkscrew and Wine Stopper will serve all your needs. Keep it at home or carry on road trips. 3.1" (7.8cm) x 5.1" (13cm).

**3.1" x 5.1"**      **2869652**  
**US: \$14.99**      **CAN: \$19.99**



### INDIAN MOTORCYCLE® BADGE LOGO BOTTLE OPENER

Pop tops in style with this premium metal Bottle Opener. It features a stylish design, efficient bottle opener, and red and silver Indian Motorcycle® logo. 2.4" (6cm) wide x 3.3" (8.5cm) tall.

**2.4" X 3.3"**      **2863852**  
**US: \$13.99**      **CAN: \$18.99**



### INDIAN MOTORCYCLE® SLAP KOOZIE

Keep your beverage cool and your hands warm with the Indian Motorcycle® slap koozie. 9" (23cm) wide x 3.1" (8cm) tall.

**ONE SIZE**      **2863959**  
**US: \$6.99**      **CAN: \$10.49**



### CIRCLE BOMBER GIRL METAL SIGN

Vintage inspired, this is an iconic sign with the retro styled pin-up girl. 12" (30.5cm) diameter.

**12" DIA.**      **2868947**  
**US: \$12.99**      **CAN: \$17.99**



### FIRST MOTORCYCLE SIGN

Vintage inspired, this is an iconic sign with embossed effect on the logo. 15.7" (40cm) wide x 11.8" (30cm) tall.

**15.7" x 11.8"**      **2864420**  
**US: \$12.99**      **CAN: \$17.99**



### ANTIQUE SIGN

Own a piece of historical Indian Motorcycle® marketing drawing with this Antique metal sign. 15.7" (40cm) wide x 11.8" (30cm) tall.

**15.7" x 11.8"**      **2864425**  
**US: \$12.99**      **CAN: \$17.99**



**NEW**

### HEADDRESS TOWEL

Featuring the headdress and script logos, this oversized towel will provide you with the comfort you need. Size: 61.8" (157cm) x 31.5" (80 cm).

**61.8" x 31.5"**      **2869650**  
**US: \$39.99**      **CAN: \$54.99**



### WOOL THROW

This high quality, hardy and timeless woollen throw with iconic headdress logo will provide you with the comfort and warmth you need. Machine washable. Made in USA. Size: 80" (203cm) x 50" (127cm).

**80" x 50"**      **2864414**  
**US: \$249.99**      **CAN: \$324.99**

**MADE IN  
U.S.A**



**NEW**

### WALL CLOCK

Brighten your man cave with the glow of the Indian Motorcycle® Wall Clock. This gloss black framed wall clock features a speedometer graphic which delivers precise and accurate time. Diameter: 11.8" (30cm). Depth: 2" (5cm).

**11.8" DIA.**      **2869651**  
**US: \$49.99**      **CAN: \$67.99**



### WOODEN CHALK SIGN

Own a piece of history with this Indian Motorcycle® marketing sketch wooden sign with chalk print effect. 15.7" (40cm) wide x 10.8" (27.5cm) tall.

**15.7" x 10.8"**      **2868948**  
**US: \$29.99**      **CAN: \$39.99**



### GENUINE PARTS & ACCESSORIES SIGN

Add this Genuine Parts & Accessories metal sign featuring the embossed headdress logo into your collection. 15.7" (40cm) wide x 11.8" (30cm) tall.

**15.7" x 11.8"**      **2864421**  
**US: \$12.99**      **CAN: \$17.99**



### SCOUT® 45 SIGN

Go back to history with this Indian® Scout® 45 metal sign—The Police Special. "Motorcycling is the quickest transportation on the earth." 15.7" (40cm) wide x 11.8" (30cm) tall.

**15.7" x 11.8"**      **2864422**  
**US: \$12.99**      **CAN: \$17.99**



### LOGO BIKE MAT

This heavy-duty garage mat to parked your bike on or kneel on while doing maintenance. Mat is 103.9" (264cm) x 52.4" (133cm).

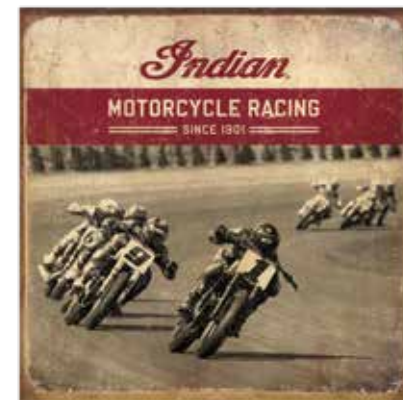
**103.9" x 52.4"**      **2863879**  
**US: \$219.99**      **CAN: \$284.99**



### HOME RUG

Featuring the icon and headdress logos, this home rug will complete the total look of your man cave. Size: 76.8" (195cm) x 116.2" (295cm).

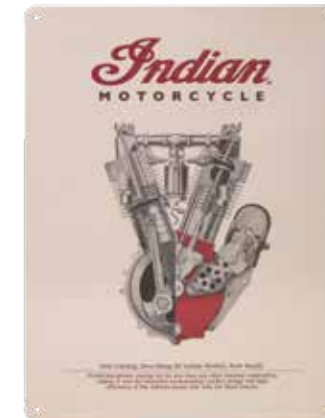
**76.8" x 116.2"**      **2864417**  
**US: \$289.99**      **CAN: \$389.99**



### RACER SIGN

Add this beautiful Racer Sign to your metal sign collection. Features Indian Motorcycle® Flat Track Racing. 13.4" (34.1cm) wide x 13.4" (34.1cm) tall.

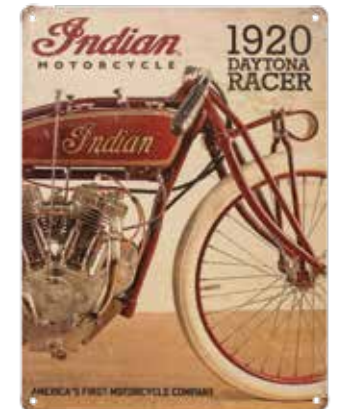
**13.4" x 13.4"**      **2868949**  
**US: \$12.99**      **CAN: \$17.99**



### 1914 ENGINE SIGN

Fancy the sophisticated industrial drawings derived from the past? Sign features an embossed effect on the engine. 11.8" (30cm) wide x 15.7" (40cm) tall.

**11.8" x 15.7"**      **2864423**  
**US: \$12.99**      **CAN: \$17.99**



### 1920 DAYTONA RACER SIGN

This 1920 Daytona Racer metal sign will definitely arise your good old memories with its white rubber tires. 11.8" (30cm) wide x 15.7" (40cm) tall.

**11.8" x 15.7"**      **2864424**  
**US: \$12.99**      **CAN: \$17.99**



## INDIAN MOTORCYCLE® CIGARS

Indian Motorcycle® and Debonaire House® have joined to capture the essence of the brand with a premium cigar line.

Blended with sought after tobaccos from the United States of America, Central America and South America, Indian Motorcycle® Cigars are exquisitely blended to give smokers of all sorts a smooth ride. Full flavored and well balanced, these cigars provide a smoking experience that is nothing short of legendary.

With new 'stay-fresh' packaging, which removes the need for humidors, Indian Motorcycle® dealers now have the opportunity to sell this premium line of cigars to riders and enthusiasts.

The cigar range is offered in individual zip seal pouches in 20 count cartons that can be easily displayed on your counter-top.

No minimum order requirements, no humidor and no hassle, dealers will receive support from Debonaire House® and their wholesale partners to set up their account and help to manage tobacco tax requirements, benefiting from competitive margins.



Indian Motorcycle® Cigars maintained at optimal temperature and humidity levels, delivered in a 3-step display carton for Indian Motorcycle® Dealerships in the U.S.A.. Nothing gets more legendary!



ROBUSTO MADURO



TORO MADURO



ROBUSTO HABANO



TORO HABANO

### CONNECTICUT BROADLEAF MADURO

- Sweet & Savory
- Medium in strength with a thick, rich American grown wrapper
- Binder: Dominican
- Fillers: Nicaraguan & Dominican

### ECUADOREAN HABANO

- Crisp & Clean
- Mild-to-Medium in strength with a rich, Colorado colored wrapper
- Binder: Dominican
- Fillers: Nicaraguan & Dominican

## MEISSENBURG DESIGNS WOOD & METAL SIGNS

Meissenburg Designs creates distinctive hand crafted, Made in America wall décor. Indian Motorcycle® aficionados will appreciate the detail and design. These beautiful art pieces make great gifts for the motorcycle rider in your life.



INDIAN MOTORCYCLE® COMPANY LOGO SIGN (55" X 35")  
Brick textured sign with frame, 4 nickel plated studs



STAND-OFF DOMED GAS TANK SIGN (30" X 18")  
Wood slatted sign with domed metal gas tank



DISTRESSED STEEL SIGN (44" X 17")  
Hemmed edges with corner grommets



MARQUEE STYLE PUB SIGN (20" ROUND)  
Printed on double sided aluminum



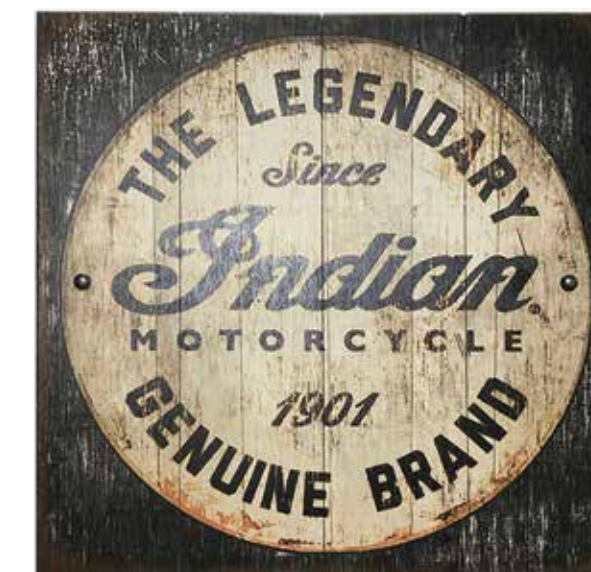
ALUMINUM STAND-OFF SIGN (22" ROUND)  
See-through 'Indian' cut-out



RETRO WOOD SLATTED SIGN (3 SIZES)  
Printed with retro motorcycle collage, 4 domed nickel plated studs



WOOD SLATTED SIGN (31" X 23")  
Printed with vintage motorcycle silhouette



WOOD SLATTED SIGN WITH STUDS (28" X 28")  
Black and white with 2 domed nickel plated studs





### EMBLEM BELT BUCKLE

This high-quality metal buckle features the Indian Motorcycle® emblem logo and is ready to use on any leather belt (not included). Buckle is 4" wide (10.2cm).

4" WIDE  
US: \$19.99    2862296  
CAN: \$26.99



### MEN'S CIRCLE BUCKLE

This premium brass Circle Buckle features a multi-colored, enamel Indian Motorcycle® logo, and is ready for use with any leather belt (not included). Buckle diameter is 3.3" (8.5cm).

3.3" WIDE  
US: \$24.99    2863822  
CAN: \$32.99



### KEY FOB, METAL

This handsome 100% metal alloy headdress logo key fob has a bottle opener and key ring. 3.1" (8cm) wide.

3.1" WIDE  
US: \$19.99    2863336  
CAN: \$26.99



### INDIAN MOTORCYCLE® LOGO PIN

1.2" WIDE  
US: \$5.99    2863673  
CAN: \$8.99



### LOGO PATCH

4.3" WIDE  
US: \$6.99    2863861  
CAN: \$10.49



### INDIAN MOTORCYCLE® HEADDRESS PIN

1.6" WIDE  
BROWN  
COLORED  
US: \$5.99    2863676  
2863675  
CAN: \$8.99



### COLORED HEADDRESS PATCH

4.5" WIDE  
US: \$6.99    2863864  
CAN: \$10.49



NEW

### ICON RUBBER KEY RING

Icon logo rubber key ring. Made with specialized machinery for defined cut out details on logo. Diameter: 1.8" (4.5cm)

1.8" WIDE  
US: \$12.99    2869649  
CAN: \$17.99



### HEADDRESS RUBBER KEY RING

Iconic headdress rubber key ring. Made with specialized machinery for defined cut out details on logo. 1.2" (3cm) wide x 4.7" (12cm) tall.

1.2" x 4.7"  
US: \$12.99    2863982  
CAN: \$17.99



### ICON LEATHER KEY RING

Quality key ring featuring the embossed icon logo on both sides. Made with a special leather work technique. 2.2" (5.5cm) wide x 3.5" (9cm) tall.

2.2" x 3.5"  
US: \$19.99    2863965  
CAN: \$26.99



### INDIAN MOTORCYCLE® CIRCLE ICON PIN

1" WIDE  
US: \$5.99    2863674  
CAN: \$8.99



### CIRCLE ICON PATCH

3.1" WIDE  
US: \$6.99    2863862  
CAN: \$10.49



### INDIAN MOTORCYCLE® STICKER SET

Add branding to nearly any surface. Not suitable for motorcycle bodywork. 13.25" (34cm) high x 8.5" (22cm) wide.

13.25" x 8.5"  
US: \$12.99    2863865  
CAN: \$17.99



### INDIAN SPORT SCOUT™ 1:12 SCALE

Display the Indian Sport Scout® as a great conversation starter or reminder of the early days. Perfect for your desk or mantle.

1:12 SCALE  
US: \$19.99    2863683  
CAN: \$26.99



### SCRIPT LEATHER KEY RING

Keep your keys safe with this modern key ring with script logo embossed on both sides. 1.2" (3cm) wide x 4.7" (12cm) tall.

1.2" x 4.7"  
US: \$15.99    2863926  
CAN: \$21.99



PHOENIX JACKET, BROWN  
PAGE 6

CINDER GLOVE  
PAGE 21

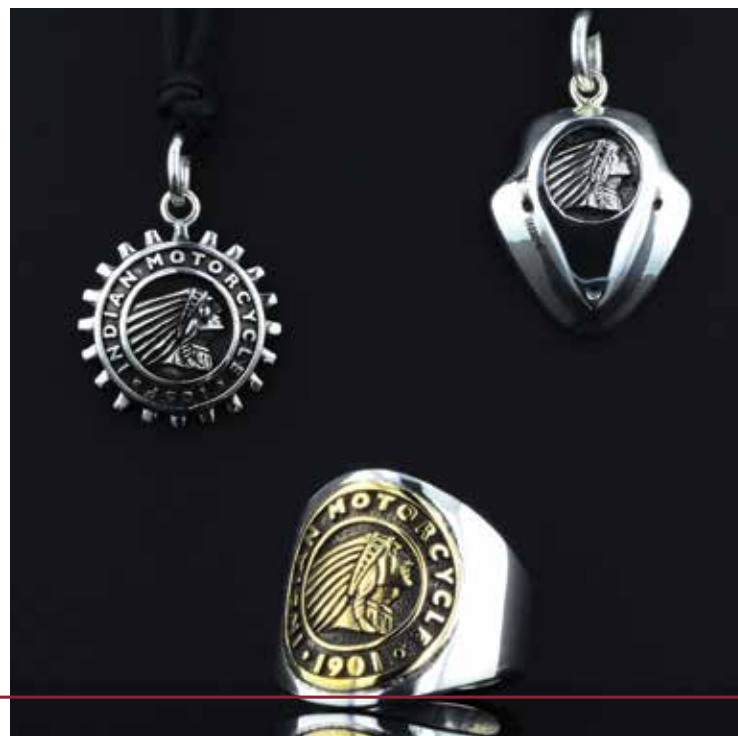


# KING BABY® JEWELRY

The Indian® by King Baby® jewelry line has been developed for bikers and motorcycle enthusiasts alike. The collection features sterling silver bracelets, pendants, rings, wallet chains, money clips, belt buckles, and key rings. King Baby® is world renowned for creating some of the most unique, highly-detailed, and most sought after premium jewelry collections. The Indian® by King Baby® line is styled with the original aesthetic of Indian Motorcycle® and handcrafted in the USA with King Baby® quality and artistry. To order please contact King Baby® directly:

Brian Bogosain (brian@kingbaby.com)  
KING BABY STUDIO  
1621 12th Street | Santa Monica, CA 90404  
Phone: 310-828-4438

View the collection at: [kingbabystudio.com/collections/indian](http://kingbabystudio.com/collections/indian)



## NO RINSE WASH & SHINE

This is the fastest, easiest, and most environmentally friendly way to conveniently wash a motorcycle without rinsing. It cleans and protects the bodywork as it bonds to the surfaces and traps dirt to clean without rinsing.

SIZE:	PART #:	US:	CAN:
16 OZ/ 12PK	2863892	\$191.88	\$263.88
1 GAL/ 2PK	2863899	\$99.98	\$135.98



## WHITE WALL & WHEEL CLEANER

This non-corrosive cleaner will safely dissolve and remove grease, oil, road dirt, and brake dust from motorcycle tires and wheels. It is excellent for use on white wall tires, and is a biodegradable cleaner that is safe for all wheels, such as chrome, aluminum, clear or powder-coated wheels.

SIZE:	PART #:	US:	CAN:
16 OZ/ 12PK	2863895	\$191.88	\$263.88
1 GAL/ 2PK	2863902	\$99.98	\$135.98



## TRAVEL PACK

A rider can keep an Indian Motorcycle® looking great while traveling by carrying this Travel Pack. It includes 4 oz. bottles of Bike Wash Concentrate, Spray & Wipe Instant Detailer, Liquid Spray Wax, and Leather, Vinyl & Rubber Conditioner, plus a plush microfiber towel.

SIZE:	PART #:	US:	CAN:
12PK	2863898	\$359.88	\$479.88



## INSTANT DETAILER & SHINE

Detail in minutes with Instant Detailer and Shine. Spray it on a microfiber towel or directly on the bike to remove dirt and bugs. Use on windshields, bodywork and chrome. Safe for use on plexiglas, lexan, acrylic, or factory coated windshields.

SIZE:	PART #:	US:	CAN:
16 OZ/ 12PK	2863893	\$191.88	\$263.88
1 GAL/ 2PK	2863900	\$111.98	\$151.98



## SPRAY WAX & PROTECTANT

Spray Wax and Protectant can be used on any clean surface, wet or dry, and it will produce a durable, high-gloss shine with minimal effort. It contains no petroleum distillates or silicone.

SIZE:	PART #:	US:	CAN:
16 OZ/ 12PK	2863896	\$191.88	\$263.88
1 GAL/ 2PK	2863903	\$99.98	\$135.98



## ENGINE ENHANCER

Engine Enhancer is specially designed to preserve and restore the beauty of an engine and related parts. It provides a durable, factory finish without greasy or oily residue.

SIZE:	PART #:	US:	CAN:
16 OZ/ 12PK	2863894	\$191.88	\$263.88
1 GAL/ 2PK	2863901	\$99.98	\$135.98



## SUPER PLUS M/F TOWEL-TWIN PACK

The only towels a rider should use on a motorcycle, these 100% microfiber towels won't scratch any surface. They are extremely plush, can be used with chemicals and cleaners, and are machine washable. Sold in packs of two towels.

SIZE:	PART #:	US:	CAN:
TWIN PK/ 24PK	2863897	\$287.76	\$407.76







GRAY ARMY HAT  
PAGE 61

STRIPE SLEEVE TEE  
PAGE 62

PHOENIX JACKET  
PAGE 6

RED BLACK PLAID SHIRT  
PAGE 47

SACRAMENTO JACKET  
PAGE 12

CHARCOAL MARL TEE  
PAGE 43

MATTE STRIPE FULL FACE HELMET  
PAGE 26

RETRO BOMBER JACKET  
PAGE 20

FLAT TRACK JACKET  
PAGE 10

GRAY BLACK PLAID SHIRT  
PAGE 47



When you're enjoying your new Indian Motorcycle®, always wear a helmet and protective eyewear and clothing and insist that your passenger do the same. Ride within the limits of the law and your own abilities. Read and understand your owner's manual. Never ride under the influence of drugs or alcohol. Indian Motorcycle® strongly recommends that all riders take a Motorcycle Safety Foundation® Rider Course. For a course near you, call 1-800-446-9227. Protect riders' rights by joining the American Motorcyclist Association. For the name of your nearest Indian Motorcycle® dealership, call 1-800-POLARIS or visit our website at [IndianMotorcycle.com](http://IndianMotorcycle.com). All riders are professionals and on a closed course. To the best knowledge of Polaris Industries Inc., the specifications, descriptions, and illustrative material contained herein are accurate as of the date this catalog was approved for printing. Indian Motorcycle® reserves the right, without prior notice, to discontinue at any time at its discretion any of the items herein or change specifications or designs without incurring any obligation to the customer. All items are subject to availability and prior sales by our dealers. Location photography by Todd Williams Photography. Studio Photography by SAGA Marketing. Catalog design by SAGA Marketing. Printed in the USA.

**Indian**  
MOTORCYCLE

Indian Motorcycle  
2100 Highway 55, Medina, MN 55340  
Phone: 763.542.0500 | Fax: 763.542.0599

Indian Motorcycle  
50 Prairie Way, Winnipeg,  
Manitoba Canada R2J 3J8  
Phone: 204.925.7100 | Fax: 204.925.7110

© 2018 Indian Motorcycle®  
Part #: 9930500



Indian Motorcycle® is a division of Polaris Industries Inc. Unless noted, trademarks are the property of Polaris Industries Inc. 3M® is a registered trademark of 3M Corporation. Cordura® is a registered trademark of Invista North America S.A.R.L. Corp Luxembourg. Velcro® is a registered trademark of Velcro Industries B.V. Ltd Co. Netherlands. Bluetooth® is a registered trademark of Bluetooth SIG, Inc. YKK® is a registered trademark of YKK Corporation. Red Wing® and Red Wing Shoes® are registered trademarks of Red Wing Shoe Company, Inc. King Baby® is a registered trademark of MB57 Holdings, Inc. Jack Daniel's® is a registered trademark of Jack Daniel's. Vibram® is a registered trademark of Vibram S.P.A.

