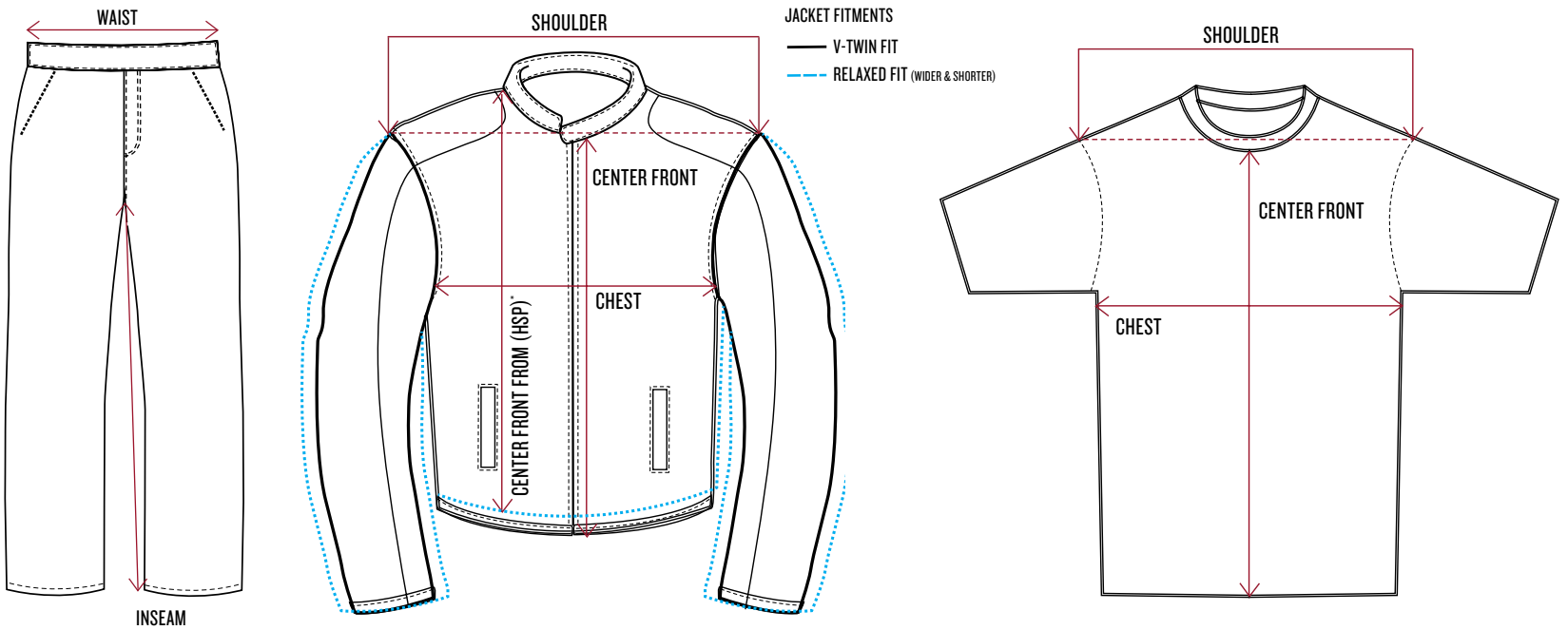


Indian[®]
MOTORCYCLE



Fall/Winter
2017
Apparel & Gifts

SIZE CHARTS



Men's V-Twin Fit Jackets

SIZE	CHEST		SHOULDER		LEATHER CENTER FRONT		TEXTILE CENTER FRONT		SPIRIT JKT CENTER FRONT		SPRINGFIELD CENTER FRONT	
	IN	CM	IN	CM	IN	CM	IN	CM	IN	CM	IN	CM
S	43.3 - 44.9	110 - 114	20.5	52	21.5	55	22	56	24	61	22	56
M	46.5 - 48	118 - 122	20.9	53	22	56	22.5	57	24.4	62	22.5	57
L	49.6 - 51.2	126 - 130	21.3	54	22.5	57	23	58	24.8	63	23	58
L-TALL	49.6 - 51.2	126 - 130	21.5	54.5	-	-	-	-	26.4	67	24.4	62
XL	53.5 - 55.1	136 - 140	22	56	23	59	23.5	60	25.6	65	23.5	60
XL-TALL	53.5 - 55.1	136 - 140	22.2	56.5	-	-	-	-	27.2	69	25.2	64
2XL	57.5 - 59	146 - 150	22.5	58	24	61	24.4	62	26.4	67	24.4	62
2XL-TALL	57.5 - 59	146 - 150	23	58.5	-	-	-	-	27.9	71	26	66
3XL	61.4 - 63	156 - 160	23.5	60	24.5	63	25.2	64	27.2	69	25.2	64
3XL-TALL	61.4 - 63	156 - 160	24	60.5	-	-	-	-	28.7	73	26.8	68
4XL	65.4 - 66.9	166 - 170	24.4	62	25.6	65	26	66	27.9	71	26	66
5XL	69.3 - 70.9	176 - 180	25.2	64	26.5	67	26.8	68	28.7	73	26.8	68

Tall sizes available on Spirit Jacket & Springfield Mesh Jacket for sizes L-3XL. Sleeve length & body length increase by 4cm.

Men's Tour Jacket

SIZE	CHEST		SHOULDER		CENTER FRONT	
	IN	CM	IN	CM	IN	CM
S	46.5	118	23	58	22.5	57
M	49.6	126	23	59	23	58
L	52.8	134	23.5	60	23	59
XL	56.7	144	24.4	62	24	61
2XL	60.6	154	25.2	64	24.8	63
3XL	64.6	164	26	66	25.6	65
4XL	68.5	174	26.8	68	26.4	67
5XL	72.4	184	27.5	70	27.2	69

Men's V-Twin Fit Vests

SIZE	CHEST		SHOULDER		CENTER FRONT	
	IN	CM	IN	CM	IN	CM
S	42	106	15	38	13.2	33.5
M	45	114	15.4	39	14.4	36.5
L	48	122	15.7	40	14.8	37.5
XL	52	132	16.5	42	15.6	39.5
2XL	56	142	17.3	44	16.3	41.5
3XL	60	152	18.1	46	17.1	43.5
4XL	64	162	18.9	48	17.9	45.5
5XL	68	172	19.7	50	18.7	47.5

Men's Casual Fit Jackets

SIZE	CHEST		SHOULDER		CENTER FRONT	
	IN	CM	IN	CM	IN	CM
S	46.5	118	20.9	53	24.8	63
M	49.6	126	21.26	54	25.2	64
L	52.8	134	21.7	55	25.6	65
XL	56.7	144	22.5	57	26.4	67
2XL	60.6	154	23.2	59	27.2	69
3XL	64.6	164	24	61	27.9	71
4XL	68.5	174	24.8	63	28.7	73
4XL	72.4	184	25.6	65	29.5	75

Casual fit is a looser fit with wider shoulders and body than the V-Twin fit.

Men's Relaxed Fit Jackets

SIZE	CHEST		SHOULDER		CENTER FRONT FROM HSP*	
	IN	CM	IN	CM	IN	CM
S	50	127	20.4	51.8	24.5	62
M	52.5	133.3	21	53.3	25	63.5
L	58	147.3	22	55.9	26	65.5
XL	62.5	158.8	23	58.4	26.5	67
2XL	66	167.6	24	61	27	69
3XL	68	172.7	24.5	62.2	27.5	70

*High Shoulder Point (HSP). Relaxed fit is wider in the shoulders, body and sleeve and shorter in body length than the V-Twin fit.

Women's V-Twin Fit Jackets

SIZE	CHEST		SHOULDER		CENTER FRONT	
	IN	CM	IN	CM	IN	CM
XS	37	94	17	43	19.7 - 22	50 - 56
S	39.5	100	17.3	44	20.5 - 22.8	52 - 58
M	41.5	106	17.7	45	21.3 - 23.6	54 - 60
L	44	112	18.1	46	22 - 24.4	56 - 62
XL	47	120	18.9	48	22.8 - 25.2	58 - 64
2XL	50.4	128	19.7	50	23.6 - 26	60 - 66
3XL	53.5	136	20.5	52	24.4 - 26.8	62 - 68
1W	48.4	123	19.3	49	22.8	58
2W	51.6	131	20.1	51	23.6	60
3W	54.7	139	20.9	53	24.4	62

Women's Tour Jacket

SIZE	CHEST		SHOULDER		CENTER FRONT	
	IN	CM	IN	CM	IN	CM
XS	40.6	103	17.3	44	22.8	58
S	42.9	109	17.7	45	23.6	60
M	45.3	115	18.1	46	24.4	62
L	47.6	121	18.5	47	25.2	64
XL	50.8	129	19.3	49	25.9	66
2XL	53.9	137	20	51	26.8	68
3XL	57	145	20.9	53	27.6	70
1W	48.4	123	19.3	49	22.8	58
2W	51.6	131	20.1	51	23.6	60
3W	54.7	139	20.9	53	24.4	62

Women's V-Twin Fit Vests

SIZE	CHEST		SHOULDER		CENTER FRONT	
	IN	CM	IN	CM	IN	CM
XS	34.5	88	10.2	26	11.2	28.5
S	37	94	10.6	27	12	30.5
M	39.5	100	11	28	12.8	32.5
L	42	106	11.4	29	13.6	34.5
XL	45	114	12.2	31	14.4	36.5
2XL	48	122	13	33	15.16	38.5
3XL	51	130	13.8	35	15.9	40.5
1W	46	117	12.6	32	14.4	36.5
2W	49	125	13.4	34	15.2	38.5
3W	52.5	133	14.2	36	15.9	40.5

Men's Chaps				
SIZE	WAIST		INSEAM	
	IN	CM	IN	CM
M	35	89	33	84.5
L	38	97	33	84.5
XL	41	105	33	84.5
2XL	44.5	113	33	84.5
3XL	47.5	121	33	84.5
4XL	51	129	33	84.5
5XL	54	137	33	84.5

Men's Tour Pants				
SIZE	WAIST		INSEAM	
	IN	CM	IN	CM
30	32.7	83	33	84
32	34.6	88	33.5	85
34	36.7	93	33.9	86
36	38.5	98	34.3	87
38	40.6	103	34.6	88
40	42.5	108	35	89
42	44.5	113	35.4	90

Women's Chaps				
SIZE	WAIST		INSEAM	
	IN	CM	IN	CM
S	35.5	90	33	83.5
M	37	94	33	83.5
L	40	102	33	83.5
XL	43	110	33	83.5
2XL	46.5	118	33	83.5
3XL	50	126	33	83.5
4XL	53	134	33	83.5
5XL	56	142	33	83.5

Women's Tour Pants				
SIZE	WAIST		INSEAM	
	IN	CM	IN	CM
XS	27.9	71	32.3	82
S	29.9	76	32.7	83
M	31.9	81	33	84
L	33.9	86	33.5	85
XL	35.8	91	33.9	86
2XL	37.8	96	34.3	87
3XL	39.8	101	34.6	88

Rainsuit- Jacket						
SIZE	CHEST		SHOULDER		CENTER FRONT (INCLUDES COLLAR)	
	IN	CM	IN	CM	IN	CM
XS	45	114	21.5	54	26.5	67
S	48	122	21.5	55	26.8	68
M	51.2	130	22	56	27.2	69
L	54.5	138	22.5	57	27.6	70
XL	58.3	148	23	59	28.3	72
2XL	62	158	24	61	29.1	74
3XL	66.1	168	24.5	63	29.9	76
4XL	70.1	178	25.6	65	30.7	78
5XL	74	188	26.5	67	31.5	80

Rainsuit- Pants			
SIZE	WAIST (RELAXED)		INSEAM
	IN	CM	CM
XS	33	84	31.9
S	34.5	88	32.3
M	36.2	92	32.7
L	39.4	100	33.3
XL	42.5	108	34
2XL	45.5	116	34.5
3XL	50	124	35
4XL	52	132	35.6
5XL	55.1	140	36.2

Men's T-Shirts and Polos						
SIZE	CHEST		SHOULDER		CENTER FRONT	
	IN	CM	IN	CM	IN	CM
S	37	94	18.5	46.5	24	60.5
M	41	104	19	48	24	61.5
L	45	114	19.5	49.5	24.5	62.5
XL	49	124	20	51	25	63.5
2XL	53	134	20.5	52.5	25.5	64.5
3XL	56.5	144	21.5	54	26	65.5
4XL	62.5	159	22	56.25	26.5	67
5XL	68.5	174	23	58.5	27	68.5

Men's Shirts and Zip Thru								
SIZE	CHEST		SHOULDER		CENTER FRONT		ZIP THRU CENTER FRONT	
	IN	CM	IN	CM	IN	CM	IN	CM
S	40	102	19	48.5	27	69	23.5	59.5
M	44	112	19.5	50	27.5	70	24	60.5
L	48	122	20.5	51.5	28	71	24	61.5
XL	52	132	21	53	28.5	72	24.5	62.5
2XL	56	142	21.5	54.5	28.5	73	25	63.5
3XL	60	152	22	56	29	74	25.5	64.5

Men's Fashion Fit T-Shirts						
SIZE	CHEST		SHOULDER		CENTER FRONT	
	IN	CM	IN	CM	IN	CM
S	42.5	108	17.3	44	22.6	58
M	44.8	114	18.1	46	23.6	60
L	47.2	120	19	48	24.4	62
XL	49.6	126	19.7	50	25.1	64
2XL	52	132	20.5	52	25.9	66

A closer fit with slimmed down shoulder and sleeve. Chest width is larger than our other tees, however fit narrows from chest, to waist, to hem, giving an overall slimmer fit.

Women's Shirts						
SIZE	CHEST		SHOULDER		CENTER FRONT	
	IN	CM	IN	CM	IN	CM
XS	34.6	88	14.7	37.5	23.6	60
S	37	94	15.3	39	24	61
M	39.3	100	15.9	40.5	24.4	62
L	41.7	106	16.5	42	24.8	63
XL	44.8	114	17.3	44	25.1	64
2XL	48	122	18.1	46	25.5	65
3XL	51.1	130	18.8	48	25.9	66

Women's Hoodies & Zip Thru						
SIZE	CHEST		SHOULDER		CENTER FRONT	
	IN	CM	IN	CM	IN	CM
XS	35.4	90	17.1	43.5	22.4	57
S	37.7	96	17.7	45	22.6	58
M	40.1	102	18.5	46.5	23.2	59
L	42.5	108	18.8	48	23.6	60
XL	45	116	19.7	50	24	61
2XL	48.8	124	20.5	52	24.4	62
3XL	51.9	132	21.5	54	24.8	63

Women's T-Shirts- Relaxed Fit								
SIZE	CHEST		WAIST		SHOULDER		CENTER BACK	
	IN	CM	IN	CM	IN	CM	IN	CM
XS	33.8	86	30.3	77	15.3	39	23.6	60
S	36.2	92	32.7	83	15.9	40.5	24	61
M	38.5	98	35	89	16.5	42	24.4	62
L	40.9	104	37.4	95	17	43.5	24.8	63
XL	44	112	40.6	103	17.9	45.5	25.7	65.5
2XL	47.2	120	43.7	111	18.7	47.5	26.1	66.5
3XL	50	128	46.8	119	19.5	49.5	26.6	67.5

Women's T-Shirts- Close Fit (stretch fabric)								
SIZE	CHEST		WAIST		SHOULDER		CENTER BACK	
	IN	CM	IN	CM	IN	CM	IN	CM
XS	33.8	86	28.7	73	15.3	39	23.6	60
S	36.2	92	31.1	79	15.9	40.5	24	61
M	38.5	98	33.5	85	16.5	42	24.4	62
L	40.9	104	35.8	91	17	43.5	24.8	63
XL	44	112	39.9	99	17.9	45.5	25.7	65.5
2XL	47.2	120	42.9	109	18.7	47.5	26.1	66.5
3XL	50	128	46.8	119	19.5	49.5	26.6	67.5

Women's Tanks- Relaxed Fit						
SIZE	CHEST		WAIST		CENTER BACK	
	IN	CM	IN	CM	IN	CM
XS	33	84	29.1	74	23.6	60
S	35.4	90	31.4	80	24.4	62
M	37.7	96	33.8	86	25.1	64
L	40.1	102	36.2	92	25.9	66
XL	43.3	110	39.3	100	26.7	68
2XL	46.4	118	42.5	108	27.5	70
3XL	49.6	126	45.6	116	28.3	72

Women's Tanks- Ribbed Fabric						
SIZE	CHEST		WAIST		CENTER BACK	
	IN	CM	IN	CM	IN	CM
XS	31.5	80	27.2	69	24	60.5
S	32.7	83	29.5	75	24.1	61.5
M	36.2	92	31.9	81	24.5	62.5
L	38.5	98	34.2	87	25	63.5
XL	41.7	106	37.4	95	25.9	66
2XL	45	114	40.6	103	26.5	67
3XL	48	122	43.7	111	26.8	68

Men's Footwear		
USA	EU	UK
7	39	6
8	41	7
9	42	8
10	43	9
11	44.5	10
12	46	11
13	47	12

Wmn's Footwear		
USA	EU	UK
5	35	2.5
6	36	3.5
7	37.5	4.5
8	38.5	5.5
9	40	6.5
10	41.5	7.5
11	42.5	8.5

Helmets			
SIZE	HAT SIZE	IN	CM
XS	6 3/4	21.3	54
S	6 7/8 - 7	21.7 - 22	55-56
M	7 1/8 - 7 1/4	22.4 - 22.8	57-58
L	7 3/8 - 7 1/2	23.2 - 23.6	59-60
XL	7 5/8 - 7 3/4	24 - 24.4	61-62
2XL	7 7/8 - 8	24.8 - 25.2	63-64

Belts		
SIZE	WAIST SIZE	
	IN	CM
S	30 - 34	76 - 86
M	34 - 38	86 - 96
L	38 - 42	96 - 106
XL	42 - 46	106 - 116
2XL	46 - 50	116 - 126

Junior's Bodysuit						
MONTHS	3-6		6-12		12-18	
	IN	CM	IN	CM	IN	CM
Chest Diameter	9	23	9.5	24	10	25
Body Length	15.5	40	16.5	42	17.5	44
Waist Circumference	18	46	19	48	20	50

MEN'S GARMENTS





Liberty Jacket

AVAILABLE FOR DELIVERY NOW

VENTED

This Made in USA horsehide jacket is everlasting. Horsehide is a very dense durable leather which is non porous (non absorbent) and has a natural ability to repel moisture. It has a removable quilted liner for cooler rides and lacing at the sides for adjustability.

FEATURES

- 1.2-1.4mm Horsehide leather shell
- Fixed lining- airmesh
- Removable liner- quilted vest
- Hidden ventilation panels on front & back
- 2 exterior & 2 interior pockets
- Side lace adjustment & zippered cuffs
- Relaxed Fit

ADDITIONAL FEATURES

- Removable CE protectors in shoulders & elbows; action back; embroidered logo on back; headdress patch on right sleeve; oval quality patch on left sleeve

SIZE: S-3XL
US: \$849.99

PART #: 2867998
CAN: \$1,104.99



Rocker Jacket

AVAILABLE FOR DELIVERY NOW

VENTED

Modern styled leather riding jacket, with subtle laser burnout arm logo and small embossed back logo. Features vents for cooling and removable quilted plaid liner for cooler days.

FEATURES

- 1-1.2mm thick leather shell
- Fixed lining- airmesh
- Removable liner- quilted plaid vest
- Hidden ventilation panels on arms & back
- 4 exterior & 2 interior pockets
- Side adjust zippers & zippered cuffs
- V-Twin Fit

ADDITIONAL FEATURES

- Removable CE protectors in shoulders & elbows; action back; buckle fasten collar; antique brass zippers; embossed logo on back; circle headdress patch on right sleeve

SIZE: S-3XL
US: \$499.99

PART #: 2863827
CAN: \$649.99



Hedstrom Jacket

AVAILABLE FOR DELIVERY NOW

VENTED

Distressed black leather classic riding jacket. Subtle black embroidered logos on front and back. Features vents for cooling and removable quilted plaid liner for cooler days.

FEATURES

- 0.9-1.0mm thick leather shell
- Fixed lining- airmesh
- Removable liner- quilted plaid vest
- Hidden ventilation panels on back & arms
- 3 exterior & 2 interior pockets
- Side adjust zippers & snap wrist cuffs
- V-Twin Fit

ADDITIONAL FEATURES

- Removable CE protectors in shoulders & elbows; action back; antique brass zippers; script logo debossed on front; embroidered logo on back; leather circle headdress patch on right sleeve

SIZE: S-3XL
US: \$499.99

PART #: 2865213
CAN: \$649.99

MEN'S GARMENTS



Benjamin Jacket

AVAILABLE FOR DELIVERY NOW

VENTED

A vintage look soft brown leather riding jacket with on trend patch pockets, shoulder panels and buckle collar. This jacket features vents for cooling and removable plaid liner for cooler days.

FEATURES

0.9-1.0mm thick dull leather shell
Fixed lining- airmesh
Removable liner- quilted plaid vest
Hidden ventilation panels on arms & back
6 exterior pockets
Powerstretch side panels & snap cuffs
V-Twin Fit

ADDITIONAL FEATURES

Removable CE protectors in shoulders and elbows; action back; antique brass snaps; script logo embroidered on back; circle headdress patch on left sleeve; buckle collar

SIZE: S-5XL
US: \$499.99

PART #: 2863703
CAN: \$649.99



Perforated Route Jacket

AVAILABLE FOR DELIVERY NOW

PUNCHED LEATHER

A punched leather riding jacket in washed gray. The stripes on the arms and snap collar give a vintage racing look. The logos are bold with large red back applique and colorful sleeve logo. The perforated leather allows great air flow for warm days and a removable plaid liner offers insulation for cool temperatures.

FEATURES

0.6-0.8mm thick perforated leather shell
Fixed lining- airmesh
Removable liner- quilted plaid vest
3 exterior & 2 interior pockets
Zip side expansion panels & snap cuffs
V-Twin Fit

ADDITIONAL FEATURES

Removable CE protectors in shoulders & elbows; action back; antique brass zippers; script logo across back; circle headdress patch on right sleeve; American flag patch on left sleeve

SIZE: S-3XL
US: \$499.99

PART #: 2865214
CAN: \$649.99



VENTED **Freeway Jacket**
AVAILABLE FOR DELIVERY NOW

A lighter weight leather riding jacket in black leather. The Indian Motorcycle® red and cream stripes are a cool highlight with the large back logo and sleeve patches. Large ventilation zippers on the chest and back and smaller sleeve zippers allow great air flow for warmer days and a removable plaid liner offers insulation for cooler days.

FEATURES
0.9-1.0mm thick leather shell
Fixed lining- airmesh
Removable liner- quilted long sleeve
Hidden ventilation panels on the back & arms
2 exterior & 2 interior pockets
Powerstretch side panels & snap wrist cuffs
V-Twin Fit

ADDITIONAL FEATURES
Removable CE protectors in shoulders & elbows; action back; antique brass zippers; script logo embroidered on front; embroidered & applique logo on back; circle headdress patch on right sleeve; American flag patch on left sleeve

SIZE: S-5XL **PART #: 2863704**
US: \$399.99 **CAN: \$519.99**



FINAL SEASON

VENTED **Racer Jacket**
AVAILABLE FOR DELIVERY NOW. FINAL SEASON

This jacket is inspired by the jerseys worn by vintage racers. The striped and contrast sleeves have great retro style. Function is provided with ventilation in the sleeves and back for warm weather riding and a removable plaid liner offers insulation for cool days.

FEATURES
1.0-1.2mm thick leather shell
Fixed lining- airmesh
Removable liner- quilted vest
Hidden ventilation panels on the back & arms
2 exterior & 4 interior pockets
Powerstretch side panels & zippered cuffs
V-Twin Fit

ADDITIONAL FEATURES
Removable CE protectors in shoulders & elbows; action back; powerstretch side panels; antique silver zippers; Indian Motorcycle® logo across front & back; American flag patch on left sleeve

SIZE: S-5XL **PART #: 2863622**
US: \$499.99 **CAN: \$649.99**



Classic Jacket 2
AVAILABLE FOR DELIVERY NOW

A true Indian Motorcycle® classic. This timeless style jacket features a slightly worn dark brown leather. Snap down collar stops any flapping when riding. The jacket also features a removable quilted plaid liner for cooler days.

FEATURES
1.2-1.4mm thick leather shell
Fixed lining- plaid
Removable liner- quilted plaid vest
2 exterior, 1 chest & 1 interior pockets
Zippered side expansion panels; snap wrist adjustment tabs
V-Twin Fit

ADDITIONAL FEATURES
Removable CE protectors in shoulders & elbows; snap down collar; antique brass zippers; embroidered script logo on front left; applique/embroidered script logo on back; circle headdress patch on right sleeve

SIZE: S-5XL **PART #: 2863710**
US: \$499.99 **CAN: \$649.99**

MEN'S GARMENTS



Indian Motorcycle® Brown Leather Vest

AVAILABLE FOR DELIVERY NOW

Featuring the vintage brown leather used on the Benjamin Jacket, this vest is a more subtly branded option, with tonal embroidered front and back logos.

FEATURES

0.9-1.0mm thick leather shell
Fixed lining
2 exterior & 1 interior pockets
V-Twin Fit

SIZE: S-5XL
US: \$169.99

PART #: 2863707
CAN: \$219.99

ADDITIONAL FEATURES

Antique brass snaps; stretch side panels; whipstitch detail on front & back yoke; branded buckles on sides; embroidered front logo; applique & embroidered logo on back



Indian Motorcycle® Vest 2

AVAILABLE FOR DELIVERY NOW

This black leather vest with laced side seams is a traditional staple for the cruiser rider. The laces can be adjusted to allow expansion where needed. The logos are a combination of embroidery and leather applique.

FEATURES

1.0-1.2mm thick dull leather shell
Fixed lining
2 exterior & 1 interior pockets
V-Twin Fit

SIZE: S-5XL
US: \$149.99

PART #: 2863711
CAN: \$194.99

ADDITIONAL FEATURES

Antique brass snaps; lace up sides; embroidered front logo; applique & embroidered logo on back



**Indian Motorcycle®
Men's Brown Leather Chaps**

AVAILABLE FOR DELIVERY NOW

In brown leather that matches the Benjamin Jacket and Brown Leather Vest. There is adjustability across the waist and thigh with stretchable heavy spandex. Additional adjustability is provided by two full length zippers (to make the leg looser or tighter) and raw edge hems which can be cut to size.

FEATURES

0.9-1.0mm thick dull leather shell
Fixed lining
3 exterior pockets
Lacing at back; heavy spandex on thigh;
double zip outseam

ADDITIONAL FEATURES

Antique brass zippers & snaps; raw edge hem; embroidered script logo on front

SIZE: M-3XL
US: \$279.99

PART #: 2866290
CAN: \$359.99



Indian Motorcycle® Men's Chaps

AVAILABLE FOR DELIVERY NOW

These black leather chaps offer great adjustability across waist and thigh with stretchable heavy spandex, 2 full length zippers to make the leg looser or tighter and raw edge hems which can be cut to size.

FEATURES

1.0-1.2mm thick dull leather shell
Fixed lining
3 exterior pockets
Lacing at back; heavy spandex on thigh;
double zip outseam

ADDITIONAL FEATURES

Antique brass zippers & snaps; raw edge hem; embroidered script logo on front

SIZE: M-5XL
US: \$249.99

PART #: 2863712
CAN: \$324.99

MEN'S GARMENTS



MESH

Drifter Mesh Jacket

AVAILABLE FOR DELIVERY NOW

A jacket for warmer days. The mesh panels allow maximum air flow. There are leather panels on the elbows. A removable lightweight windproof liner offers insulation when temperatures drop.

FEATURES

Polyester mesh with leather elbow panels
Fixed lining- airmesh
Windproof removable liner
2 exterior & 1 interior pocket
Side adjustment zips, snap collar & wrists
V-Twin Fit

ADDITIONAL FEATURES

Removable CE protectors in shoulders and elbows; action back; antique brass snaps; script logo embroidered on chest; embroidered and applique logo on back; headdress patch on right sleeve

SIZE: S-3XL
US: \$199.99

PART #: 2867999
CAN: \$259.99



MESH

Shadow Mesh Jacket

AVAILABLE FOR DELIVERY NOW

This is a full mesh riding jacket. Full mesh construction offers maximum air flow for the hot days. A removable lightweight windproof liner gives insulation for the cold days.

FEATURES

Polyester mesh shell
Fixed lining- airmesh
Windproof removable liner
2 exterior & 1 interior pocket
Side adjustment zips & snap cuffs
V-Twin Fit

ADDITIONAL FEATURES

Removable CE protectors in shoulders & elbows; action back; antique brass zippers on waist pockets; leather patch on front & back; circle leather patch on right sleeve

SIZE: S-3XL
US: \$189.99

PART #: 2868000
CAN: \$249.99



MESH

Lightweight Mesh Jacket

AVAILABLE FOR DELIVERY NOW

Retro styled full mesh riding jacket. Bold branding on back and front demonstrates Indian Motorcycle® as your brand of choice. Full mesh construction offers maximum air flow for the warmest of days. A removable lightweight windproof liner offers insulation on cool mornings.

FEATURES

Fixed lining- airmesh
Windproof removable liner- long sleeve
2 exterior & 1 interior pockets
Zippered side expansion panels; snap cuff
V-Twin Fit

ADDITIONAL FEATURES

Removable CE protectors in shoulders & elbows; action back; snap fasten collar; script logo embroidered & applique on front; embroidered and applique logo on back; circle headdress patch on right sleeve

SIZE: S-3XL
US: \$189.99

PART #: 2865215
CAN: \$249.99



TALL SIZES

Springfield Mesh Jacket

AVAILABLE FOR DELIVERY NOW

MESH

A jacket for warm weather riding. Full mesh panels allow maximum air flow for rider cooling. There are leather panels on the shoulder and elbows. A removable lightweight windproof liner offers insulation when temperatures drop.

FEATURES

Fixed lining- airmesh
Windproof removable liner- long sleeve
2 exterior & 2 interior pockets
Powerstretch side panels; Velcro® sleeve adjusters; zippered cuff
V-Twin Fit

ADDITIONAL FEATURES

Removable CE protectors in shoulders & elbows; action back; 3M® reflective piping on back; script logo embroidered & applique on front; leather branded patch on back; circle headdress patch on right sleeve; American flag patch on left sleeve

SIZE: S-5XL, LT-3XL **PART #: 2863713**
US: \$199.99 **CAN: \$259.99**



Frontier Jacket

AVAILABLE FOR DELIVERY NOW

WATER RESISTANT

A water resistant riding jacket constructed of micro fiber with a brushed cotton effect and contrast brown suede collar. There is a removable plaid quilted liner for insulation when the weather is cooler and ventilation panels for cooling on warm days.

FEATURES

Fixed lining- airmesh
Removable liner- quilted plaid vest
Hidden shoulder, arm pit & back vents
4 exterior & 3 interior pockets
Snap cuffs; side adjustment snaps
V-Twin Fit

ADDITIONAL FEATURES

Removable CE protectors in shoulders & elbows; breathable; action back; snap down collar; antique brass snaps & zips; script logo applique and embroidered on back; circle headdress patch on right sleeve

SIZE: S-3XL **PART #: 2866180**
US: \$249.99 **CAN: \$324.99**



FINAL SEASON

Pride Jacket

AVAILABLE FOR DELIVERY NOW. FINAL SEASON

WATER RESISTANT

A water repellent micro fiber fabric reduces the bulk and weight on this jacket. Featuring bold Indian Motorcycle® branding on front and rear. This jacket has hidden ventilation zippers on shoulder, sleeves and back to allow the rider to cool down on warmer days. There is a removable quilted plaid liner which adds warmth on cool mornings.

FEATURES

Fixed lining
Removable liner- softshell vest
Hidden ventilation panels on arms, shoulders, & back
2 exterior & 2 interior pockets
Side stretch panels at waist
V-Twin Fit

ADDITIONAL FEATURES

Removable CE protectors in shoulders & elbows; action back; snap down collar; antique brass zippers; embroidered logos on front & back; American flag patch on left sleeve

SIZE: S-5XL **PART #: 2863624**
US: \$249.99 **CAN: \$324.99**

MEN'S GARMENTS





NEW
Waxed Jacket

WATER RESISTANT

A waxed cotton jacket with a rib knit collar for comfort. This has a fixed lining and protectors.

FEATURES

Fixed lining
3 exterior & 2 interior pockets
Snap cuffs; side adjustment zippers
V-Twin Fit

ADDITIONAL FEATURES

Removable CE protectors in shoulders & elbows; rib knit collar with snap fasten; action back; leather patch on front; woven patch at back neck

SIZE: S-5XL
US: \$299.99

PART #: 2867629
CAN: \$389.99



NEW
Waxed Vest

CASUAL

A cool waxed cotton vest with a rib knit collar.

FEATURES

Fixed lining
3 exterior & 1 interior pockets
Side adjustment zippers
V-Twin Fit

ADDITIONAL FEATURES

Rib knit collar; antique brass snaps, rivets and zippers; embossed leather patch on front; woven patch with small printed logo on back neck

SIZE: S-5XL
US: \$139.99

PART #: 2867630
CAN: \$179.99



Highway Vest

CASUAL

AVAILABLE FOR DELIVERY NOW

Constructed of a tough cotton canvas with leather trim, this vest has a classic denim style. Can be worn alone or over a leather jacket when you purchase the next size up.

FEATURES

4 exterior pockets
Button side closure
V-Twin Fit

ADDITIONAL FEATURES

Antique silver branded two-tone buttons; bottom pockets zip close; embroidered front logo; applique & embroidered logo on back

SIZE: S-5XL
US: \$119.99

PART #: 2865216
CAN: \$155.99

MEN'S GARMENTS



1901 Jacket

AVAILABLE FOR DELIVERY NOW

CASUAL

A lightweight casual jacket with full on cool Indian Motorcycle® branding. Retro chest and sleeve stripes have a vintage race feel.

FEATURES

Fixed lining- airmesh
2 exterior, 2 interior pockets
V-Twin Fit

SIZE: S-5XL
US: \$149.99

PART #: 2866177
CAN: \$194.99

ADDITIONAL FEATURES

Water resistant & breathable; snap fasten collar; action back; embroidered & applique script logo on front; printed graphic on back; woven patches on left & right sleeve



Oscar Jacket

AVAILABLE FOR DELIVERY NOW

CASUAL

A cool over shirt style jacket in waxed cotton. Snap down collar ensures the collar stays in place during rides.

FEATURES

Fixed lining- quilted
4 exterior & 1 interior pockets
Snap cuffs
V-Twin Fit

SIZE: S-3XL
US: \$149.99

PART #: 2866179
CAN: \$194.99

ADDITIONAL FEATURES

Snap collar; antique brass zippers & snaps; action back; embossed leather logo patch on chest pocket; embroidered & applique logo on back



CASUAL

NEW
Bomber Jacket

This is a lightweight casual jacket with large branding on the back.

FEATURES
Fixed lining
3 exterior & 2 interior pockets
Rib knit collar, cuffs & hem
V-Twin Fit

SIZE: S-5XL
US: \$119.99

PART #: 2867631
CAN: \$155.99

ADDITIONAL FEATURES
Snap close waist pockets; antique brass zips; embroidered logo on front and back; "Since 1901" embroidered on right sleeve



CASUAL

TALL SIZES
Spirit Jacket

AVAILABLE FOR DELIVERY NOW

A lightweight casual jacket for the Indian Motorcycle® fan. Bold branding stands out on this simple style jacket.

FEATURES
Fixed lining
2 exterior & 2 interior pockets
Snap cuffs
V-Twin Fit

SIZE: S-5XL, LT-3XLT
US: \$119.99

PART #: 2863829
CAN: \$155.99

ADDITIONAL FEATURES
Water resistant; action back; antique silver zippers; script logo embroidered on front; applique & embroidered logo on back; circle headdress patch on right sleeve; contrast piping



CASUAL

Scout® Jacket

AVAILABLE FOR DELIVERY NOW

A lightweight casual jacket for the proud Scout® rider. Sleeve patches and large back embroidery feature Scout® and Indian Motorcycle® branding.

FEATURES
Fixed lining- airmesh
4 exterior & 2 interior pockets
Snap adjustment waist tabs
V-Twin Fit

SIZE: S-5XL
US: \$149.99

PART #: 2866178
CAN: \$194.99

ADDITIONAL FEATURES
Water resistant & breathable; action back; snap fasten collar; antique brass zippers; action back; Scout® logo on front; embroidered & applique Scout® logo on back; woven patches on left & right sleeve

MEN'S GARMENTS



WATERPROOF

Indian Motorcycle® Tour Jacket

AVAILABLE FOR DELIVERY NOW

This jacket will work in all conditions for the serious touring rider with waterproofing, ventilation and multi layer options. The outer shell is a tough nylon mix fabric, and if worn on its own has hidden zip down vented panels to allow great air flow. If the waterproof inner lining is zipped in, then the jacket converts to a waterproof jacket. An additional quilted liner offers great insulation against the cold.

FEATURES

Fixed lining- airmesh
Removable liners- waterproof long sleeve & separate quilted long sleeve
Hidden ventilation panels on shoulders & back
2 exterior & 1 interior pockets
Zippered side expansion panels; Velcro® straps at waist, wrist & arms
V-Twin Fit

ADDITIONAL FEATURES

Removable CE protectors in shoulders & elbows; 100% waterproof (with liner); mesh chest panels for maximum airflow (without liner); anti microbial odor control fabric under arms; 3M® reflective piping; action back; removable storm collar; script logo on front & back; logo patches on right arm & storm collar

SIZE: S-5XL
US: \$499.99

PART #: 2863831
CAN: \$649.99



WATERPROOF

Indian Motorcycle® Tour Pants

AVAILABLE FOR DELIVERY NOW

Pants designed to match the Tour Jacket. These pants are waterproof via a z liner system. Cooling vents allow air flow around the z liner without compromising the waterproof system.

FEATURES

Fixed lining- airmesh
Hidden ventilation panels on thigh
2 exterior pockets
Elastic waistband; Velcro® adjuster at hem; powerstretch panels at knees & back

ADDITIONAL FEATURES

100% waterproof; anti microbial odor control fabric at crotch; heat resistant inseam panel at hem; 3M® reflective piping; zips to optional Tour Jacket; logo patch on front & back

SIZE: 30-44
US: \$249.99

PART #: 2863832
CAN: \$324.99



**Indian Motorcycle®
Color Block Rainsuit - Unisex**

AVAILABLE FOR DELIVERY NOW

WATERPROOF

A two piece jacket and pant rainsuit constructed of waterproof and breathable nylon. Every seam is taped to ensure you stay dry in the rain. Designed to be worn over your leathers this is a large fit. The pant has removable suspenders.

FEATURES

Fixed lining- airmesh
1 interior pocket
Adjustable Velcro® cuffs & waist; stirrups;
full length Velcro® on front opening to
reinforce zip closure
V-Twin Fit

ADDITIONAL FEATURES

100% waterproof & breathable;
reflective piping; removable
suspenders; stows into self storage bag
attached to jacket lining; branding on
the front, legs & back

SIZE: XS-5XL
US: \$179.99

PART #: 2867447
CAN: \$234.99



WOMEN'S GARMENTS



Loretto Jacket
Page 24



VENTED

Hedstrom Jacket

AVAILABLE FOR DELIVERY NOW

A classic black leather riding jacket. Simple flattering female cut with a dull subtle black leather. Logos are a subtle black on black emboss and embroidered.

FEATURES

0.8-1.0mm thick dull leather shell
Fixed lining- airmesh
Removable liner- quilted plaid vest
Zippered vents in sleeves & back
2 exterior & 2 interior pockets
Zip & snap cuff wrist; side adjustment zips
Women's V-Twin Fit

ADDITIONAL FEATURES

Removable CE protectors in shoulders & elbows; action back; antique brass snaps & zippers; debossed chest logo; embroidered script logo on back; circle headdress patch on right sleeve

SIZE: XS-3XL
US: \$459.99

PART #: 2865217
CAN: \$599.99



VENTED

Benjamin Jacket

AVAILABLE FOR DELIVERY NOW

A vintage look soft brown leather riding jacket. On trend patch pockets and quilted elbow and shoulder panels give a retro look. The jacket features vents for warm weather riding and removable plaid quilted liner for cool temperatures.

FEATURES

0.9-1mm thick dull leather shell
Fixed lining- airmesh
Removable liner- quilted plaid vest
Hidden ventilation panels on arms & back
4 exterior pockets
Powerstretch side panels; zippered cuffs
Women's V-Twin Fit

ADDITIONAL FEATURES

Removable CE protectors in shoulders & elbows; action back; antique brass snaps; script logo embroidered on back; circle headdress patch on left sleeve; snap collar

SIZE: XS-3XL
US: \$449.99

PART #: 2863719
CAN: \$589.99



VENTED

FINAL SEASON

Freeway Jacket

AVAILABLE FOR DELIVERY NOW. FINAL SEASON

A lighter weight leather riding jacket in black leather. The red and cream stripes are a cool highlight with the large back logo and sleeve patches. Ventilation zippers on the chest and back allow great air flow for warm days and a removable plaid liner offers insulation for cool days.

FEATURES

0.9-1.0mm leather shell
Fixed lining- airmesh
Removable liner- softshell vest
Hidden ventilation panels on back & front
2 exterior pockets
Powerstretch side panels; zippered wrist
Women's V-Twin Fit

ADDITIONAL FEATURES

Removable CE protectors in shoulders & elbows; action back; script logo embroidered on front; embroidered & applique logo on back; circle headdress patch on right sleeve; American flag patch on left sleeve

SIZE: XS-3XL
US: \$449.99

PART #: 2863715
CAN: \$589.99

WOMEN'S GARMENTS



Effie Jacket AVAILABLE FOR DELIVERY NOW

CASUAL
A soft and supple black leather off bike jacket. This jacket has slimmer cut sleeves and a more fashionable cut. Strong Indian Motorcycle® logos on front, back and sleeve show off your brand loyalty.

FEATURES
0.8-1.0mm thick leather shell
Fixed lining- airmesh
Removable liner- quilted plaid vest
2 exterior & 2 interior pockets
Zip and snap wrist; side adjustment zips
Women's V-Twin Fit

ADDITIONAL FEATURES
Non riding jacket; action back; antique brass snaps; script logo embroidered on front; applique & embroidered logo on back; circle headdress patch on right sleeve; snap collar

SIZE: XS-3XL **PART #: 2865218**
US: \$399.99 **CAN: \$519.99**



Indian Motorcycle® Chaps AVAILABLE FOR DELIVERY NOW

These black leather chaps offer great adjustability across waist and thigh with stretchable heavy spandex, 2 full length zippers to make the leg looser or tighter and raw edge hems which can be cut to size.

FEATURES
Fixed lining
3 exterior pockets
Lacing at back; heavy spandex on thigh
Double zip outseam

ADDITIONAL FEATURES
Antique brass zippers & snaps; raw edge hem; embroidered logo on front & back

SIZE: S-5XL **PART #: 2863714**
US: \$229.99 **CAN: \$299.99**



Fringe Vest

AVAILABLE FOR DELIVERY NOW

This style uses the vintage brown leather used on the Benjamin Jacket. The vest has feminine fringe on the front and back, with tonal embroidery on the back.

FEATURES

- 0.9-1.0mm leather shell
- Fixed lining
- 2 exterior & 1 interior pocket
- Zippered side expansion panels
- Women's V-Twin Fit

ADDITIONAL FEATURES

Antique brass snaps; debossed logo on front; embroidered logo on back

SIZE: XS-3XL PART #: 2866291
 US: \$169.99 CAN: \$219.99



Indian Motorcycle® Brown Leather Vest

AVAILABLE FOR DELIVERY NOW

Featuring the vintage brown leather used on the Benjamin Jacket. This vest is a more subtly branded option, with tonal embroidered front and back logos.

FEATURES

- 0.9-1.0mm dull leather shell
- Fixed lining
- 2 exterior & 1 interior pockets
- Side stretch panels
- Women's V-Twin Fit

ADDITIONAL FEATURES

Antique brass snaps; whipstitch detail on front & back yoke; branded buckles on sides; embroidered front logo; applique & embroidered logo on back

SIZE: XS-3XL PART #: 2863708
 US: \$159.99 CAN: \$209.99



Indian Motorcycle® Vest 2

AVAILABLE FOR DELIVERY NOW

Black leather vest with laced side seams is a traditional staple for the cruiser rider. The laces can be adjusted to allow expansion where needed. The logos are a combination of embroidery and leather applique. Branded rivets decorate the shoulder and back panel.

FEATURES

- 1.0-1.2mm leather shell
- Fixed lining
- 2 exterior & 1 interior pockets
- Women's V-Twin Fit

ADDITIONAL FEATURES

Antique brass snaps; lace up sides; embroidered front logo; applique & embroidered logo on back

SIZE: XS-3XL, 1W-3W PART #: 2863716
 US: \$149.99 CAN: \$194.99



WOMEN'S GARMENTS



MESH

Drifter Mesh Jacket

AVAILABLE FOR DELIVERY NOW

A full mesh riding jacket with bold branding on back. Full mesh construction offers the greatest air flow for hot days. A removable lightweight windproof liner gives insulation in cool temperatures.

FEATURES

Fixed lining- airmesh
Windproof removable liner- long sleeve
2 exterior & 1 interior pockets
Side adjustment zips; zip cuff
Women's V-Twin Fit

ADDITIONAL FEATURES

Removable CE protectors in shoulders & elbows; snap collar; action back; logo patch on front; applique and embroidered logo on back

SIZE: XS-3XL
US: \$189.99

PART #: 2867448
CAN: \$249.99



MESH

Lightweight Mesh Jacket

AVAILABLE FOR DELIVERY NOW

Retro styled full mesh riding jacket. Bold branding on back and front demonstrates Indian Motorcycle® as your brand of choice. Full mesh construction offers maximum air flow for the warmest of days. A removable lightweight windproof liner offers insulation for cool mornings.

FEATURES

Fixed lining- airmesh
Windproof removable liner- long sleeve
2 exterior & 2 interior pockets
Side adjustment zips; snap cuff
Women's V-Twin Fit

ADDITIONAL FEATURES

Removable CE protectors in shoulders & elbows; power stretch action back; snap collar & cuffs; script logo embroidered & applique on front & back; circle headdress patch on right sleeve

SIZE: XS-3XL
US: \$179.99

PART #: 2866181
CAN: \$234.99



MESH

Springfield Mesh Jacket

AVAILABLE FOR DELIVERY NOW

A jacket for warm weather riding. Full mesh panels allow maximum air flow for rider cooling. There are leather panels on the shoulder and elbows. A removable lightweight windproof liner offers insulation when temperatures drop.

FEATURES

Fixed lining- airmesh
Windproof removable liner- long sleeve
2 exterior & 2 interior pockets
Powerstretch side panels; zippered & Velcro® wrist; Velcro® sleeve adjusters
Women's V-Twin Fit

ADDITIONAL FEATURES

Removable CE protectors in shoulders & elbows; leather shoulder & elbow pads; action back; script applique and embroidered on front; leather logo patch on back; circle headdress patch on right sleeve; American flag patch on left sleeve

SIZE: XS-3XL
US: \$189.99

PART #: 2863717
CAN: \$249.99



Spirit Jacket

AVAILABLE FOR DELIVERY NOW

CASUAL Lightweight casual jacket. This flattering female cut jacket, with light color panels to slim the waist has strong Indian Motorcycle® branding with logos on front, back and sleeve.

FEATURES

Fixed lining
2 exterior & 2 interior pockets
Powerstretch side panels; snap wrist; back snaps
Women's V-Twin Fit

ADDITIONAL FEATURES

Action back; water resistant & breathable; embroidered logo on front; applique & embroidered logo on back; circle headress patch on right sleeve

SIZE: XS-3XL
US: \$124.99

PART #: 2865220
CAN: \$164.99



FINAL SEASON

Textile Benjamin Jacket

AVAILABLE FOR DELIVERY NOW. FINAL SEASON

WATER RESISTANT A vintage look combined with a modern water resistant micro fiber exterior. This lightweight riding jacket is a great all-weather solution with vents for warm weather and a removable quilted plaid liner for cool days. Branding is subtle with black on black embroidery and a laser burn out sleeve patch.

FEATURES

Fixed lining- airmesh
Removable liner- quilted plaid vest
Hidden ventilation panels on arms & back
4 exterior & 1 interior pockets
Powerstretch side panels; snap & zip cuffs
Women's V-Twin Fit

ADDITIONAL FEATURES

Removable CE protectors in shoulders & elbows; water resistant; action back; antique brass snaps & zippers; script logo embroidered on back; circle headress patch on right sleeve; buckle collar

SIZE: XS-3XL
US: \$249.99

PART #: 2863833
CAN: \$324.99



NEW

Loretto Jacket

CASUAL This is a stretch cotton mix jacket with a rib knit collar, for comfort. This casual style looks good with subtle branding.

FEATURES

Fixed lining
4 exterior & 1 interior pockets
Adjustable waist tabs; snap cuffs
Women's V-Twin Fit

ADDITIONAL FEATURES

Stretch cotton mix fabric for added comfort; rib knit fasten collar; action back; embossed leather patch on front; small printed logo on back neck

SIZE: XS-3XL
US: \$159.99

PART #: 2867632
CAN: \$209.99

WOMEN'S GARMENTS



WATERPROOF

Indian Motorcycle® Tour Jacket

AVAILABLE FOR DELIVERY NOW

This jacket will work in all conditions for the serious touring rider with waterproofing, ventilation and multi layer options. The outer shell is a tough nylon mix fabric, and if worn on its own has hidden zip down vented panels to allow great air flow. Worn with the liner, this jacket is waterproof. An additional quilted liner offers great insulation against the cold.

FEATURES

- Fixed lining- airmesh
- Removable liners- waterproof long sleeve & separate quilted long sleeve
- Hidden ventilation panels on shoulders & back
- 4 exterior & 1 interior pockets
- Zippered side expansion panels;
- Velcro® straps at waist, wrist & arms
- Women's V-Twin Fit

ADDITIONAL FEATURES

- Removable CE protectors in shoulders & elbows; 100% waterproof (with liner); mesh chest panels for maximum airflow (without liner); anti microbial odor control fabric under arms;
- 3M® reflective piping; action back; removable storm collar; script logo on front and back; logo patches on right arm & storm collar

SIZE: XS-3XL, 1W-3W **PART #: 2863834**
US: \$469.99 **CAN: \$609.99**



WATERPROOF

Indian Motorcycle® Tour Pants

AVAILABLE FOR DELIVERY NOW

Pants designed to match the Tour Jacket. These pants are waterproof via a z liner system. Cooling vents allow air flow around the z liner without compromising the waterproof system.

FEATURES

- Fixed lining- airmesh
- Hidden ventilation panels on thigh
- 2 exterior pockets
- Elastic waistband; Velcro® adjuster at hem
- Powerstretch panels at knees & back

ADDITIONAL FEATURES

- 100% waterproof, anti microbial odor control fabric at crotch; heat resistant inseam panel at hem; 3M® reflective piping; zips to optional Tour Jacket; logo patch on front & back

SIZE: XS-3XL **PART #: 2863835**
US: \$229.99 **CAN: \$299.99**



GLOVES



Drifter Mesh Glove **CE**
AVAILABLE FOR DELIVERY IN JUNE
SUMMER Constructed using a combination of mesh, to allow airflow, and leather palm and finger panels. This lightweight glove is easy to wear in warm weather conditions.

FEATURES
Mesh glove with leather palm & wrist
Velcro® wrist closure
Touchscreen leather on fingertip & thumb
Mens CE certified; Directive 89/686/EEC.
EN 13594:2015

SIZE: S-4XL **PART #: 2867449**
US: \$59.99 **CAN: \$79.99**



Mesh Glove **CE**
AVAILABLE FOR DELIVERY NOW
SUMMER A combination of mesh to allow airflow and leather palm and finger panels construct this summer glove. The lightweight design offers very little bulk and is easy to wear in warm weather conditions.

FEATURES
Mesh glove with leather palm & wrist
Gel padded palm
Velcro® wrist closure
Mens & Womens CE certified; Directive 89/686/EEC. French Protocol Level 1

SIZE: **PART #:**
MEN'S: S-4XL **2863722**
WOMEN'S: S-XL **2863723**
US: \$49.99 **CAN: \$67.99**



Fingerless Glove
AVAILABLE FOR DELIVERY NOW
SUMMER A cruiser style fingerless glove in black leather. A double leather and gel palm panel adds comfort. The hooks on the end of the finger tips allow the glove to be removed easily.

FEATURES
Full leather construction
Gel padded palm
Velcro® wrist closure
Laser etched logo

SIZE: **PART #:**
MEN'S: S-4XL **2863720**
WOMEN'S: S-XL **2863721**
US: \$44.99 **CAN: \$59.99**





MID SEASON

Brown Texture Glove

AVAILABLE FOR DELIVERY NOW

Simple unstructured short style brown leather glove. Contrast leather textures on the top and palm of the hand.

FEATURES

Full leather construction
Raw seam edges with double leather panel on palms
Velcro® wrist closure
Laser etched thumb logo

SIZE: S-4XL
US: \$54.99

PART #: 2867450
CAN: \$74.99



MID SEASON

Perforated Route Glove

AVAILABLE FOR DELIVERY IN JUNE

A punched leather glove with vintage stripes that looks great worn with the perforated route jacket.

FEATURES

Full leather construction
Padded palm
Velcro® wrist closure
Touchscreen finger & thumb tip
Laser etched logo
Mens CE certified; Directive 89/686/EEC.
EN 13594:2015

SIZE: S-4XL
US: \$59.99

PART #: 2867451
CAN: \$79.99



MID SEASON

Two Tone Glove

AVAILABLE FOR DELIVERY NOW

Two color glove with brown on the back of the hand and black on the palm side. Double leather on the palm for comfort, raw edge seams with contrast stitching and Velcro® closure.

FEATURES

Full leather construction
Double layer knuckle
Double leather panel on palms
Velcro® wrist adjustment
Mens CE certified; Directive 89/686/EEC.
EN 13594:2015

SIZE: S-4XL
US: \$59.99

PART #: 2866321
CAN: \$79.99



MID SEASON

Hedstrom Glove

AVAILABLE FOR DELIVERY NOW

Mid season, distressed black leather glove to match the Hedstrom Jacket. It has a padded knuckle for protection, gel palm panels and articulated fingers for rider comfort.

FEATURES

Full leather construction
Gel padded palm & padded knuckle
Velcro® wrist closure
Touchscreen compatible index finger & thumb
Mens CE certified; Directive 89/686/EEC
French Protocol Level 1

SIZE: S-4XL
US: \$69.99

PART #: 2865223
CAN: \$89.99



GLOVES



MID SEASON

Classic Glove CE

AVAILABLE FOR DELIVERY NOW

Mid season, classic black leather glove. Simple styling with double leather panels, perforated leather finger panels and Velcro® closure.

FEATURES

Full leather construction
Perforated inner finger panels
Exposed seam construction with double leather panel on palms
Velcro® wrist closure
Mens & Womens CE certified; Directive 89/686/EEC. French Protocol Level 1

SIZE:	PART #:
MEN'S: S-4XL	2863310
WOMEN'S: S-XL	2863311
US: \$59.99	CAN: \$79.99



MID SEASON

Retro Glove CE

AVAILABLE FOR DELIVERY NOW

Mid season, black leather with red and cream leather panels to match several of our jackets. The padded knuckle, perforated finger panels and double leather contrast palms make these as comfortable as they are cool.

FEATURES

Full leather construction
Perforated inner finger panels
Padded knuckles
Velcro® wrist closure
Mens & Womens CE certified; Directive 89/686/EEC. French Protocol Level 1

SIZE:	PART #:
MEN'S: S-4XL	2863312
WOMEN'S: S-XL	2863313
US: \$69.99	CAN: \$89.99



MID SEASON

Deerskin Glove

AVAILABLE FOR DELIVERY NOW

A made in USA deerskin glove in a simple classic style designed for mid season wear.

FEATURES

Full deerskin leather construction
Heat branding on wrist
Made in the USA

SIZE:	PART #:
MEN'S: S-4XL	2863686
WOMEN'S: S-XL	2863687
US: \$74.99	CAN: \$99.99

MADE IN

U.S.A



HELMETS



Retro Open Face Helmet

AVAILABLE FOR DELIVERY NOW

A classic custom helmet in Indian Motorcycle® red metallic ABS outer shell with contrasting tan liner.

FEATURES

Pearlized ABS outer shell; EPS inner shell
Thin fixed lining; detachable cheek pads
Weight: 1050g
Safety: DOT certified

ADDITIONAL FEATURES

Bluetooth® compatible;
chrome piping;
pearlized graphic

SIZE: XS-2XL
US: \$119.99

PART #: 2866199
CAN: \$155.99



Retro Open Face Helmet Black

AVAILABLE FOR DELIVERY NOW

A classic custom helmet in black ABS outershell with contrasting tan liner.

FEATURES

Pearlized ABS outer shell; EPS inner shell
Thin fixed lining; detachable cheek pads
Weight: 1050g
Safety: DOT certified

ADDITIONAL FEATURES

Bluetooth® compatible;
chrome piping;
pearlized graphic

SIZE: XS-2XL
US: \$119.99

PART #: 2866310
CAN: \$155.99

FINAL SEASON

Open Face Helmet

AVAILABLE FOR DELIVERY NOW. FINAL SEASON

Custom style helmet with ABS outer shell and snap on sun peak. This classic style is in matte black finish with contrast stitch detailing. The size can be adjusted via a rear adjust mechanism to get the perfect fit.

FEATURES

Matte open face ABS outer shell;
EPS inner shell
Removable, washable cheek pads
Weight: 1150g
Safety: DOT certified; ECE certified

ADDITIONAL FEATURES

Rear goggle holder;
size adjuster at rear;
Bluetooth® compatible

SIZE: XS-2XL
US: \$89.99

PART #: 2863695
CAN: \$119.99



NEW

Highway Half Helmet

Black matte ABS outer shell construction with rear size adjuster, so the fit can be customized to the wearer.

FEATURES

Matte, UV lacquer finish
ABS outer shell; EPS inner shell
Fixed inner lining
Weight: 1135g
Safety: DOT certified

ADDITIONAL FEATURES

Snap on sun peak;
zip off cheek pads; size
adjuster at rear

SIZE: XS-XL
US: \$79.99

PART #: 2867639
CAN: \$104.99

HELMETS



NEW Elite Half Helmet

Black matte fiberglass outer shell construction with rear size adjuster, so the fit can be easily adjusted.

FEATURES

Matte, UV lacquer finish
100% fiberglass outer shell; EPS inner shell
Fixed lining
Weight: 845g
Safety: DOT certified

ADDITIONAL FEATURES

Zip off cheek pads;
size adjuster at rear

SIZE: XS-XL PART #: 2867640
US: \$79.99 CAN: \$104.99



NEW Pinstripe Half Helmet

Black glossy ABS outer shell construction with rear size adjuster, so the fit can be easily adjusted.

FEATURES

Glossy, UV lacquer finish
ABS outer shell; EPS inner shell
Fixed lining
Weight: 985g
Safety: DOT certified

ADDITIONAL FEATURES

Size adjuster at rear

SIZE: XS-XL PART #: 2867638
US: \$79.99 CAN: \$104.99



Half Helmet 1

AVAILABLE FOR DELIVERY NOW

The most popular style of Indian Motorcycle® helmet. An ABS outer shell construction with a matte black, red and cream color scheme match with several Indian Motorcycle® jackets. There is a hidden drop down sun visor and removable ear and neck pads. The size can be adjusted via a rear adjust mechanism to get the perfect fit.

FEATURES

Matte ABS outer shell; EPS inner shell
Fixed inner lining
Weight: 980g
Safety: DOT certified

ADDITIONAL FEATURES

Inner sun visor; size
adjuster at rear;
Bluetooth® compatible

SIZE: XS-2XL PART #: 2863696
US: \$79.99 CAN: \$104.99



Half Helmet 2

AVAILABLE FOR DELIVERY NOW

The all matte black version of the most popular style of Indian Motorcycle® helmet. There is a hidden drop down sun visor and removable ear and neck pads. The size can be adjusted via a rear adjust mechanism to get the perfect fit.

FEATURES

Matte ABS outer shell; EPS inner shell
Fixed inner lining
Weight: 980g
Safety: DOT certified

ADDITIONAL FEATURES

Inner sun visor; size
adjuster at rear;
Bluetooth® compatible

SIZE: XS-2XL PART #: 2864367
US: \$79.99 CAN: \$104.99





Liberty Jet Helmet

AVAILABLE FOR DELIVERY NOW

This Liberty Jet Helmet has an ABS outershell and features an integrated sun visor and ventilation throughout.

FEATURES

Matte ABS outer shell; EPS inner shell
Removable, washable lining
Weight: 1250g
Safety: DOT certified; ECE certified

ADDITIONAL FEATURES

Anti-scratch visor; top & rear vents; inner sun visor; Bluetooth® compatible

SIZE: XS-2XL PART #: 2867454
US: \$149.99 CAN: \$194.99



Freeway Full Face Helmet

AVAILABLE FOR DELIVERY NOW

Full face helmet construction of ABS outershell with vents. There is a drop down internal sun visor.

FEATURES

Matte ABS outer shell; EPS inner shell
Removable, washable lining
Weight: 1450g
Safety: DOT certified; ECE certified

ADDITIONAL FEATURES

Anti-fog Pinlock 30, anti-scratch shield coatings; chin & top vents; inner sun visor; Bluetooth® compatible

SIZE: XS-2XL PART #: 2867453
US: \$199.99 CAN: \$259.99

FINAL SEASON

Full Face Helmet

AVAILABLE FOR DELIVERY NOW. FINAL SEASON

Full face helmet construction of ABS outer shell. The lining is a luxury contrast to the outer shell. There is a drop down internal sun visor.

FEATURES

Glossy ABS outer shell; EPS inner shell
Removable, washable lining
Weight: 1500g
Safety: DOT certified; ECE certified

ADDITIONAL FEATURES

Anti-fog, anti-scratch visor; chin & top vents; inner sun visor; Bluetooth® compatible

SIZE: XS-2XL PART #: 2863694
US: \$199.99 CAN: \$259.99



NEW Route Modular Helmet

High quality thermoplastic modular helmet with distinctive graphics. This helmet features vents and an integrated sun visor.

FEATURES

Matte finish
70% polycarbonate, 30% ABS outer shell; EPS inner shell
Removable, washable cheek pads
Weight: 1600g
Safety: DOT certified; ECE certified

ADDITIONAL FEATURES

Anti-fog Pinlock 30; top & rear vents; Inner sun visor; Bluetooth® compatible

SIZE: XS-2XL PART #: 2867637
US: \$219.99 CAN: \$284.99



Half Helmet Visor

AVAILABLE FOR DELIVERY NOW

SIZE: ONE SIZE PART #: 2866311
US: \$19.99 CAN: \$25.99



Open Face Helmet Sun Peak

AVAILABLE FOR DELIVERY NOW

SIZE: ONE SIZE PART #: 2863849
US: \$9.99 CAN: \$14.99



Liberty Jet Helmet Visor

AVAILABLE FOR DELIVERY NOW

SIZE: ONE SIZE PART #: 2867461
US: \$19.99 CAN: \$25.99



Freeway Full Face Helmet Visor

AVAILABLE FOR DELIVERY NOW

SIZE: ONE SIZE PART #: 2867460
US: \$19.99 CAN: \$25.99



FINAL SEASON

Full Face Helmet Visor

AVAILABLE FOR DELIVERY NOW. FINAL SEASON

SIZE: ONE SIZE PART #: 2864371
US: \$19.99 CAN: \$25.99



NEW

Route Modular Helmet Visor

SIZE: ONE SIZE PART #: 2867643
US: \$19.99 CAN: \$25.99

Pinlock 30 Fog Resistant Insert Lens - Clear (not pictured)

AVAILABLE FOR DELIVERY NOW

SIZE: ONE SIZE PART #: 2867462
US: \$24.99 CAN: \$32.99

FOOTWEAR

Men's Classic Lace Up - Black



AVAILABLE FOR DELIVERY IN JUNE

This 8-inch classic lace up boot with waxy shoe lace is developed to provide a stable fit and protection, it has a Vibram® sole to provide grip and abrasion resistance and features a toe cap and heel cup for protection. The premium cow leather, antique silver eyelets and all black stitching make these boots a favorite for riding and being seen around town. These boots feature Goodyear welt construction.

FEATURES

- 1.4-1.5 mm thick durable cow leather
- Gusset tongue to prevent sand or water from getting into the boots
- Goodyear welt construction, repairable outsole construction
- Antibacterial microfiber insock & mesh lining
- Ankle protector
- Toe cap & heel cup
- Certified slip resistance outsole
- Internal YKK® zipper for easy pull-on
- Comes with two pairs of shoe laces in black & mix combo colors
- CE certified. Directive 89/686/EEC

SIZE: 7-13
US: \$199.99

PART #: 2863960
CAN: \$259.99



Men's Engineer - Black



AVAILABLE FOR DELIVERY IN JUNE

This 7.5-inch boot is an iconic short Engineer style with burnish suede back panel. It features an internal YKK® zipper for easy pull-on, a Vibram® sole to provide grip and abrasion resistance and an elastic gusset to adjust the fitting. The premium cow leather, original Indian Motorcycle® buckles, embossed logo and all black stitching will have you riding in style. These boots feature Goodyear welt construction.

FEATURES

- 1.4-1.5 mm thick durable cow leather
- Strap & elastic gusset to adjust the fitting
- Antibacterial microfiber insock & mesh lining
- Ankle protector
- Toe cap & heel cup
- Goodyear welt construction, repairable outsole construction
- Gusset zipper to prevent sand or water from getting into the boots
- CE certified. Directive 89/686/EEC

SIZE: 7-13
US: \$199.99

PART #: 2863962
CAN: \$259.99



Men's Classic Moc - Brown



AVAILABLE FOR DELIVERY IN JUNE

This 8-inch lifestyle moccasin boot is developed to provide a stable fit and protection, it has an ecru Vibram® sole to provide grip and abrasion resistance and features a toe cap and heel cup for protection. The premium cow leather, antique brass eyelets and all brown stitching make these boots a favorite for riding and being seen around town. These boots feature Goodyear welt construction.

FEATURES

- 1.4-1.5 mm thick durable cow leather
- Gusset tongue & zipper to prevent sand or water from getting into the boots
- Goodyear welt construction, repairable outsole construction
- Antibacterial microfiber insock & mesh lining
- Ankle protector
- Toe cap & heel cup
- Gear shift pad
- Comes with two pairs of waxy shoe laces in brown & ecru colors
- CE certified. Directive 89/686/EEC

SIZE: 7-13
US: \$199.99

PART #: 2863963
CAN: \$259.99





Men's Sneaker - Black



AVAILABLE FOR DELIVERY IN JUNE

This smart sneaker is developed to provide a stable fit and protection, it has a Vibram® sole to provide grip and abrasion resistance and features a gusset tongue to prevent sand or rain. The premium cow leather, antique silver eyelets and pinstripes design make this sneaker a favorite for riding and being seen around town.

FEATURES

- 1.4-1.5 mm thick durable cow leather
- Gusset tongue to prevent sand or water from getting into the boots
- Antibacterial microfiber insock & mesh lining
- Ankle protector
- Toe cap & heel cup
- Gear shift pad
- Comes with two pairs of waxy shoe laces in black & red colors
- CE certified. Directive 89/686/EEC

SIZE: 7-13
US: \$129.99

PART #: 2863961
CAN: \$169.99



Women's Short Engineer - Black



AVAILABLE FOR DELIVERY IN JUNE

This 8-inch boot is a professional short Engineer style with burnish suede back panel. It features an internal YKK® zipper for easy pull-on, a slight heeled Vibram® sole to provide grip and abrasion resistance and an elastic gusset to adjust the fitting. The premium cow leather, original Indian Motorcycle® buckles, embossed logo and all black stitching will have you riding in style. These boots feature Goodyear welt construction.

FEATURES

- 1.4-1.5 mm thick durable cow leather
- Strap & elastic gusset to adjust the fitting
- Antibacterial microfiber insock & mesh lining
- Ankle protector
- Toe cap & heel cup
- Gear shift pad
- Goodyear welt construction, repairable outsole construction
- Gusset zipper to prevent sand or water from getting into the boots
- CE certified. Directive 89/686/EEC

SIZE: 5-11
US: \$189.99

PART #: 2863978
CAN: \$249.99



Women's Tall Engineer - Brown

AVAILABLE FOR DELIVERY IN JUNE

This 13-inch boot is a casual tall Engineer style with burnish suede back panel. It features an internal YKK® zipper an easy opening, with heeled wooden sole and an elastic gusset to adjust the fitting. The premium cow leather, original Indian Motorcycle® buckles, embossed logo and all brown stitching will give you the look. These boots feature Goodyear welt construction.

FEATURES

- 1.4-1.5 mm thick durable cow leather
- Strap & elastic gusset to adjust the fitting
- Antibacterial microfiber insock & mesh lining
- Goodyear welt construction, repairable outsole construction
- Gusset zipper to prevent sand or water from getting into the boots

SIZE: 5-11
US: \$249.99

PART #: 2863964
CAN: \$324.99

WHAT IS A GOODYEAR WELT?

The Goodyear welting machine, invented in 1869, attaches the sole to a strip of leather, or welt, that runs around the outside of the shoe rather than the lining. Welting is a manual and time-consuming process, but results in a more waterproof and longer lasting shoe.

FOOTWEAR





Men's Worthington Boot

This boot is based on Red Wing Shoes' classic Engineer style and has been modified for Indian Motorcycle® riders. This 11-inch pull-on boot features plain toe styling, a Vibram® 430 sole to provide higher grip and abrasion resistance and an instep strap to adjust the fitting. The premium Red Wing Shoes® Black Harness leather, original Indian Motorcycle® buckles, embossed logo and all black stitching will have you riding in style. These boots feature Goodyear welt construction and puritan chain stitching.

FEATURES

- 2.0-2.2 mm thick durable Red Wing® work boots leather
- Instep strap to adjust the fitting
- Leather Insole
- Traditional Engineer style from 1930s
- Original Indian Motorcycle® logo buckles
- Goodyear welt construction, repairable outsole construction

SIZE: 7-13 **PART #: 2864411**
US: \$319.99 **CAN: \$409.99**



Men's Spirit Lake Boot

This boot is based on Red Wing Shoes' popular Iron Ranger and has been modified for Indian Motorcycle® riders. It is an 8-inch boot developed to provide a stable fit and ankle protection, has a Vibram® 430 sole to provide higher grip and abrasion resistance and features a double layer leather toe cap for protection. The premium Red Wing Shoes® Amber Portage leather, gunmetal eyelets and all brown stitching make these boots a favorite for riding and being seen around town. These boots feature Goodyear welt construction and triple stitched quality.

FEATURES

- 2.0 - 2.2 mm thick durable Red Wing® work boots leather
- Double layer capped toe to protect the toe area
- Gusset tongue to prevent sand or water from getting into the boots
- Leather Insole
- Goodyear welt construction, repairable outsole construction

SIZE: 7-13 **PART #: 2864412**
US: \$319.99 **CAN: \$409.99**



Women's Connelly Boot

This boot is based on Red Wing Shoes' Engineer boot and has been updated for Indian Motorcycle® riders. This 11-inch pull-on boot features plain toe styling, Heeled Oil Resistant Cushion Crepe sole to provide grip and lighter weight and an instep strap to adjust the fit. The premium Red Wing Shoes® Black Harness leather, original Indian Motorcycle® buckles, embossed logo and white stitching deliver the best of fashion and function. These boots feature Goodyear welt construction and puritan chain stitching.

FEATURES

- 2.0-2.2 mm thick durable Red Wing® work boots leather
- Instep strap to adjust the fit
- Footbed insole to provide initial comfort
- Traditional Engineer style from 1930s
- Original Indian Motorcycle® logo buckles
- Goodyear welt construction, repairable outsole construction

SIZE: 5-10 **PART #: 2864413**
US: \$319.99 **CAN: \$409.99**



MEN'S CASUALWEAR



IMC Quilted Hoodie
Page 49



Icon Denim Shirt
Page 51

MEN'S CASUALWEAR



Wall of Death Tee, Port
Page 41



NEW
IMC Circle Icon Tee

This light gray tee features the Indian Motorcycle® circle icon headress printed large across the chest in a distressed discharge print, and a small logo at the back neck.

FABRIC: 100% cotton single jersey
GRAPHICS: Large distressed print on front; small logo on back neck

SIZE: S-3XL **PART #: 2867587**
US: \$34.99 **CAN: \$46.99**



NEW
Be Legendary Tee

This navy tee shows the Indian Motorcycle® icon logo printed large across the back, in a distressed discharge print. The Indian Motorcycle® logo is printed small on the chest.

FABRIC: 100% cotton single jersey
GRAPHICS: Small logo print on front; large distressed icon print on back

SIZE: S-3XL **PART #: 2867589**
US: \$34.99 **CAN: \$46.99**



NEW
Legend Lives Tee

A long sleeved tee, with a large graphic printed across the back, celebrating the legendary Indian Motorcycle®. A small logo is printed on the front chest.

FABRIC: 100% cotton single jersey
GRAPHICS: Small logo print on front; large distressed graphic on back

SIZE: S-3XL **PART #: 2867588**
US: \$39.99 **CAN: \$54.99**

MADE IN
★ ★ ★ ★ ★
U.S.A
★ ★ ★ ★ ★



FINAL SEASON

Black Icon Tee

AVAILABLE FOR DELIVERY NOW. FINAL SEASON

Made in California, these tees use a heavy weight cotton single jersey. The logo is printed with water based and discharge inks to give a vintage look.

FABRIC: 100% cotton single jersey
GRAPHICS: "America's First Motorcycle Company®" print on front in hand painted style; small distressed logo print on back

SIZE: S-3XL **PART #: 2866175**
US: \$39.99 **CAN: \$54.99**

MADE IN
★ ★ ★ ★ ★
U.S.A
★ ★ ★ ★ ★



FINAL SEASON

IMC Tee

AVAILABLE FOR DELIVERY NOW. FINAL SEASON

Made in California, these tees use a heavy weight cotton single jersey. The logo is printed with water based and discharge inks to give a vintage look.

FABRIC: 100% cotton single jersey
GRAPHICS: Large hand painted style IMC graphics on front; small distressed logo print on back

SIZE: S-3XL **PART #: 2866174**
US: \$39.99 **CAN: \$54.99**

MADE IN
★ ★ ★ ★ ★
U.S.A
★ ★ ★ ★ ★



FINAL SEASON

First Tee

AVAILABLE FOR DELIVERY NOW. FINAL SEASON

Made in California, these tees use a heavy weight cotton single jersey. The logo is printed with water based and discharge inks to give a vintage look.

FABRIC: 100% cotton single jersey
GRAPHICS: "America's First Motorcycle Company®" print on front; small distressed logo print on back

SIZE: S-3XL **PART #: 2866176**
US: \$39.99 **CAN: \$54.99**

MEN'S CASUALWEAR

MADE IN
★ ★ ★ ★ ★
U.S.A.
★ ★ ★ ★ ★



FINAL SEASON

Scout® Script Tee

AVAILABLE FOR DELIVERY NOW. FINAL SEASON

Indian® Scout® fans will appreciate this light gray tee, with large front graphic celebrating "The legendary Scout®." Made in California this tee uses a heavy weight single jersey.

FABRIC: 100% cotton single jersey

GRAPHICS: Distressed Legendary Scout® print on front; small logo print on back

SIZE: S-3XL **PART #: 2866172**
US: \$39.99 **CAN: \$54.99**

MADE IN
★ ★ ★ ★ ★
U.S.A.
★ ★ ★ ★ ★



FINAL SEASON

Scout® Legendary Tee

AVAILABLE FOR DELIVERY NOW. FINAL SEASON

Indian® Scout® fans will appreciate this antique white tee, with large back graphic celebrating "The legendary Scout®." Made in California this tee uses a heavy weight single jersey.

FABRIC: 100% cotton single jersey

GRAPHICS: Small distressed logo print on front; large distressed print on back

SIZE: S-3XL **PART #: 2866173**
US: \$39.99 **CAN: \$54.99**



NEW

Wall of Death Tee, Port

This tee celebrates the daredevil exploits of the legendary Wall of Death riders and the Indian® Scout®. A large discharge print on the front shows the Scout® in action.

FABRIC: 100% cotton single jersey

GRAPHICS: Large distressed graphic on front; small logo print at back neck; "Since 1901" at rear hem; woven patch on right sleeve

SIZE: S-3XL **PART #: 2867564**
US: \$34.99 **CAN: \$46.99**



FINAL SEASON

Wall of Death Tee

AVAILABLE FOR DELIVERY NOW. FINAL SEASON

Celebrate the daredevil exploits of the legendary Wall of Death riders with this great looking tee. This black, premium-quality tee features contrast-color shoulder stitching and an exciting, multi-color Wall of Death graphic on the front.

FABRIC: 100% cotton single jersey

GRAPHICS: Distressed Wall of Death graphic on front; logo on back; woven patch on right sleeve

SIZE: S-3XL **PART #: 2863811**
US: \$34.99 **CAN: \$46.99**



Scout® Logo Tee, Black

AVAILABLE FOR DELIVERY NOW

Indian® Scout® riders and enthusiasts will appreciate this simple black tee with bold Indian® Scout® branding. The front logo is in a puff print, for added effect.

FABRIC: 100% cotton single jersey

GRAPHICS: Puff print logo on front; small logo on back; woven patch on right sleeve

SIZE: S-3XL **PART #: 2863812**
US: \$34.99 **CAN: \$46.99**



Scout® Logo Tee, Red

AVAILABLE FOR DELIVERY NOW

Indian® Scout® riders and enthusiasts will appreciate this simple red tee with bold Indian® Scout® branding. The front logo is in a discharge print.

FABRIC: 100% cotton single jersey

GRAPHICS: Logo print on front and back; woven patch on right sleeve

SIZE: S-3XL **PART #: 2863816**
US: \$34.99 **CAN: \$46.99**

MADE IN

U.S.A



NEW
1901 Motor Oil Tee

This light gray tee is in a lightweight cotton slub jersey, and comes in a more fashionable fit than our other tees, with a slimmed down sleeve and shoulders. It has a large front graphic in a hand painted style, inspired by a vintage oil can. The finished tee has been given a vintage wash, to add to the relaxed and cool feel of the style.

FABRIC: 100% cotton slub jersey
GRAPHICS: Large hand painted style graphic on front
FIT: Men's Fashion Fit T-Shirt

SIZE: S-2XL **PART #:** 2867666
US: \$39.99 **CAN:** \$54.99

MADE IN

U.S.A



NEW
1901 World's Fastest Tee

This black tee is in a lightweight cotton slub jersey, and comes in a more fashionable fit than our other tees, with a slimmed down sleeve and shoulders. It has a large front graphic in a hand painted style, featuring a vintage Scout® design. The finished tee has been given a vintage wash, to add to the relaxed and cool feel of the style.

FABRIC: 100% cotton slub jersey
GRAPHICS: Large hand painted style graphic on front
FIT: Men's Fashion Fit T-Shirt

SIZE: S-2XL **PART #:** 2867667
US: \$39.99 **CAN:** \$54.99

MADE IN

U.S.A



NEW
1901 Grand National Tee

This dark red tee is in a lightweight cotton slub jersey, and comes in a more fashionable fit than our other tees, with a slimmed down sleeve and shoulders. The finished tee has been given a vintage wash, to add to the relaxed and cool feel of the style.

FABRIC: 100% cotton slub jersey
GRAPHICS: Large hand painted style graphic on front
FIT: Men's Fashion Fit T-Shirt

SIZE: S-2XL **PART #:** 2867665
US: \$39.99 **CAN:** \$54.99

MADE IN

U.S.A



NEW
1901 Factory Team Tee

This navy tee is in a lightweight cotton slub jersey, and comes in a more fashionable fit than our other tees, with a slimmed down sleeve and shoulders. The finished tee has been given a vintage wash, to add to the relaxed and cool feel of the style.

FABRIC: 100% cotton slub jersey
GRAPHICS: Large hand painted style graphic on front
FIT: Men's Fashion Fit T-Shirt

SIZE: S-2XL **PART #:** 2867664
US: \$39.99 **CAN:** \$54.99

INDIAN MOTORCYCLE® 1901 FASHION FIT TEES

These shirts form part of the Indian Motorcycle® 1901 collection. These tees fit closer to the body than other styles. The T-Shirt tapers down from the chest to the hem giving a comfortable, sleek and fashionable silhouette. Reference the size chart on page 4 for more details on the fit.



MEN'S CASUALWEAR



Logo Tees

AVAILABLE FOR DELIVERY NOW

Indian Motorcycle® logo tees are made with 100% pima cotton which is a superior cotton. The logos are printed with discharge and water based inks for a soft feel.

FABRIC: 100% cotton single jersey
GRAPHICS: Distressed Indian Motorcycle® logo on front; woven patch on right sleeve

SIZE: S-5XL **PART #: AT RIGHT**
US: \$29.99 **CAN: \$39.99**



ANTIQUÉ WHITE: **PART #: 2867945**
ECRU (BLACK SHIRT): **PART #: 2863317**
BLUE: **PART #: 2863745**
GRAY MARL: **PART #: 2863810**
BROWN: / FINAL SEASON **PART #: 2863657**
GREEN: / FINAL SEASON **PART #: 2863744**
RED: / FINAL SEASON **PART #: 2863746**



Long Sleeve Logo Tee

AVAILABLE FOR DELIVERY NOW

A classic and simple long sleeve logo tee, in black cotton slub with a large Indian Motorcycle® logo printed on the front in a distressed discharge print, and a small logo at the back neck.

FABRIC: 100% cotton slub jersey
GRAPHICS: Distressed Indian Motorcycle® logo on front & back neck; "1901" embroidery at back hem

SIZE: S-5XL **PART #: 2866270**
US: \$44.99 **CAN: \$59.99**



NEW

Headdress Logo Tee

This simple tee comes in navy, and features the Indian Motorcycle® headdress across the front, in light gray.

FABRIC: 100% cotton single jersey
GRAPHICS: Large distressed headdress print on front; woven patch on right sleeve

SIZE: S-3XL **PART #: 2867592**
US: \$29.99 **CAN: \$39.99**



FINAL SEASON

Waffle Tee

AVAILABLE FOR DELIVERY NOW. FINAL SEASON

A long sleeved raglan T-Shirt in a textured, waffle knit, navy fabric. Features the Indian Motorcycle® headdress printed on the front in antique white.

FABRIC: 100% cotton waffle
GRAPHICS: Large distressed headdress print on front; small distressed logo print at back; woven patch on right sleeve; "Since 1901" embroidery at back hem

SIZE: S-3XL **PART #: 2866160**
US: \$44.99 **CAN: \$59.99**



FINAL SEASON

Headdress Raglan Gray Tee

AVAILABLE FOR DELIVERY NOW. FINAL SEASON

With contrasting sleeves and a large distressed Indian Motorcycle® headdress in full color across the front, this raglan tee evokes the spirit of a vintage Indian Motorcycle® racing jersey. The Indian Motorcycle® headdress is printed in a hand painted style, to enhance the vintage feel of the tee.

FABRIC: 100% cotton slub
GRAPHICS: Large distressed print on front, small print at back neck; small "Since 1901" embroidery at back hem

SIZE: S-3XL **PART #: 2866272**
US: \$44.99 **CAN: \$59.99**



FINAL SEASON

Script Icon Tee, Charcoal

AVAILABLE FOR DELIVERY NOW. FINAL SEASON

This simple tee comes in a dark gray marl, and features a chest pocket with a printed logo just above. A large icon script logo is also printed on the back in a distressed discharge print.

FABRIC: 100% cotton marl single jersey

GRAPHICS: Distressed logo on front & back; left chest pocket; woven patch on right sleeve

SIZE: S-5XL **PART #: 2865206**
US: \$29.99 **CAN: \$39.99**



NEW

Motorcycle Racing Tee

A black tee featuring a large Indian Motorcycle® racing logo across the back, and a small logo at the front chest.

FABRIC: 100% cotton single jersey

GRAPHICS: Small logo print on front; large distressed racing logo print on back; woven label on right sleeve

SIZE: S-3XL **PART #: 2867562**
US: \$29.99 **CAN: \$39.99**



Black Logo Tank

AVAILABLE FOR DELIVERY NOW

This sleeveless vest has Indian Motorcycle® branding printed on the front and back. And a small embroidery at the back hem.

FABRIC: 100% cotton single jersey

GRAPHICS: Large distressed Indian Motorcycle® logo on front; small distressed print at back neck; embroidered "Since 1901" at back hem

SIZE: S-3XL **PART #: 2867947**
US: \$25.99 **CAN: \$35.49**



Sleeveless Script Icon Tee, Black

AVAILABLE FOR DELIVERY NOW

This comfortable sleeveless all-cotton tee has Indian Motorcycle® branding printed on the front and back and deep-cut armholes.

FABRIC: 100% cotton single jersey

GRAPHICS: Distressed logo print on front & back

SIZE: S-5XL **PART #: 2865172**
US: \$25.99 **CAN: \$35.49**



Sleeveless Logo Tee

AVAILABLE FOR DELIVERY NOW

This tee delivers classic sleeveless style and comfort with Indian Motorcycle® branding on the front and back.

FABRIC: 100% cotton single jersey

GRAPHICS: Logo print on front & back

SIZE: S-3XL **PART #: 2865173**
US: \$25.99 **CAN: \$35.49**



FINAL SEASON

Circle Icon Sleeveless Tee

AVAILABLE FOR DELIVERY NOW. FINAL SEASON

A navy sleeveless tee with deep cut armholes, featuring a large distressed icon printed on the front, and small logo printed at the back neck.

FABRIC: 100% cotton single jersey

GRAPHICS: Large printed Indian Motorcycle® icon logo on front

SIZE: S-3XL **PART #: 2866276**
US: \$25.99 **CAN: \$35.49**

MEN'S CASUALWEAR



FINAL SEASON

Logo Polo

AVAILABLE FOR DELIVERY NOW. FINAL SEASON

A classic style polo shirt in a gray marl pique, with contrast black collar and sleeve cuffs, and subtle branding.

FABRIC: 100% cotton pique

GRAPHICS: Embroidered logo on chest & back; contrasting collar and cuffs

SIZE: S-3XL **PART #: 2866167**
US: \$49.99 **CAN: \$67.99**



FINAL SEASON

Henley Tee

AVAILABLE FOR DELIVERY NOW. FINAL SEASON

This tee is garment dyed which gives an inconsistent and faded look to the garment. The dye process happens after the tee is made, giving a muted look to the colors. This classic henley features a small chest embroidery, and a leather patch at the front hem.

FABRIC: 100% cotton slub

GRAPHICS: Small embroidered logo on chest; embroidered "Since 1901" on back hem; leather patch on front hem

SIZE: S-3XL **PART #: 2865197**
US: \$39.99 **CAN: \$54.99**



FINAL SEASON

Long Sleeve Henley Tee

AVAILABLE FOR DELIVERY NOW. FINAL SEASON

This tee is garment dyed which gives an inconsistent and faded look to the garment. The dye process happens after the tee is made, giving a muted look to the colors. This classic henley features a small chest embroidery, and a leather patch at the front hem.

FABRIC: 100% cotton slub

GRAPHICS: Small embroidered logo on chest; embroidered "Since 1901" at back hem; leather patch on front hem

SIZE: S-3XL **PART #: 2865196**
US: \$44.99 **CAN: \$59.99**



World Tee

AVAILABLE FOR DELIVERY NOW

This gray marl tee features the Indian Motorcycle® headress logo on a bold new graphic.

FABRIC: 100% cotton single jersey

GRAPHICS: Large distressed print on front; small distressed logo on back; embroidered "Since 1901" at back hem; woven patch on right sleeve

SIZE: S-3XL **PART #: 2867948**
US: \$34.99 **CAN: \$46.99**



IMC 16 Black Tee

AVAILABLE FOR DELIVERY NOW

A black slub tee, featuring a large distressed discharge print graphic on the front.

FABRIC: 100% cotton slub

GRAPHICS: Large distressed print on front, small print at back neck; small "Since 1901" embroidery at back hem

SIZE: S-3XL **PART #: 2866271**
US: \$34.99 **CAN: \$46.99**



FINAL SEASON

True Tee

AVAILABLE FOR DELIVERY NOW. FINAL SEASON

A vintage style in navy single jersey, with large distressed front graphic in a soft feel plastisol print.

FABRIC: 100% cotton single jersey

GRAPHICS: Large distressed IMC print on front; distressed logo print on back; small "Since 1901" on rear hem; woven patch on right sleeve

SIZE: S-3XL **PART #: 2866159**
US: \$34.99 **CAN: \$46.99**



FINAL SEASON

Short Sleeve First Tee

AVAILABLE FOR DELIVERY NOW. FINAL SEASON

A simple black tee featuring a large distressed front logo, which boasts that Indian Motorcycle® is "America's First Motorcycle Company®."

FABRIC: 100% cotton single jersey

GRAPHICS: Large distressed "America's First Motorcycle Company®" print on front; small distressed logo on back; woven patch on right sleeve

SIZE: S-3XL **PART #: 2863748**
US: \$34.99 **CAN: \$46.99**



NEW

Superior Tee

An Indian Motorcycle® red tee, with a large distressed back graphic featuring the Indian® Scout® bike. This tee celebrates the superior quality of Indian Motorcycle®.

FABRIC: 100% cotton single jersey

GRAPHICS: Small distressed logo on front; large distressed graphic on back; "Since 1901" embroidered at rear hem; woven patch on right sleeve

SIZE: S-3XL **PART #: 2867591**
US: \$29.99 **CAN: \$39.99**



NEW

Thunder Stroke® Tee, Gray

This tee celebrates the powerful Thunder Stroke® 111 engine, with a large logo at the front, and a large Thunder Stroke® 111 graphic on the back.

FABRIC: 100% cotton single jersey

GRAPHICS: Large Thunder Stroke® 111 print on front and back & left sleeve; woven patch on right sleeve

SIZE: S-5XL **PART #: 2867593**
US: \$34.99 **CAN: \$46.99**



Thunder Stroke® 111 Tee

AVAILABLE FOR DELIVERY NOW

This tee celebrates the powerful Thunder Stroke® 111 engine, with a large logo at the front, and a large Thunder Stroke® 111 graphic on the back.

FABRIC: 100% cotton single jersey

GRAPHICS: Large Thunder Stroke® 111 print on front and back & left sleeve; woven patch on right sleeve

SIZE: S-5XL **PART #: 2863660**
US: \$34.99 **CAN: \$46.99**

MEN'S CASUALWEAR



FINAL SEASON

Bomber Girl Tee

AVAILABLE FOR DELIVERY NOW. FINAL SEASON

Large front graphic featuring a retro styled pin-up girl, and the Indian Motorcycle® logo.

FABRIC: 100% cotton single jersey

GRAPHICS: Large distressed pin-up girl print on front; small distressed logo print at back; woven patch on right sleeve; "Since 1901" embroidery at back hem

SIZE: S-3XL
US: \$39.99

PART #: 2866198
CAN: \$54.99



FINAL SEASON

Bomber Girl Raglan

AVAILABLE FOR DELIVERY NOW. FINAL SEASON

A long sleeved raglan T-Shirt with contrast black sleeves and gray body. A retro style pin-up girl on the back, and small Indian Motorcycle® logo on front chest. This style has been given a vintage wash for an authentic feel.

FABRIC: 100% cotton single jersey

GRAPHICS: Small distressed logo print on front; large distressed pin-up girl print at back; woven patch on right sleeve; "Since 1901" embroidery at back hem

SIZE: S-3XL
US: \$44.99

PART #: 2866197
CAN: \$59.99



183MPH LS Tee

AVAILABLE FOR DELIVERY NOW

A long sleeved tee in red slub fabric. The front graphic celebrates the historic world record, broken on an Indian® motorcycle.

FABRIC: 100% cotton slub jersey

GRAPHICS: Large distressed print on front; small distressed logo on back; printed contrast stripes on sleeves; embroidered "Since 1901" at back hem; woven patch on right sleeve

SIZE: S-3XL
US: \$44.99

PART #: 2867949
CAN: \$59.99



FINAL SEASON

Vintage Race Brown Long Sleeve Tee

AVAILABLE FOR DELIVERY NOW. FINAL SEASON

This long sleeved tee comes in a brown slub fabric. With a large distressed discharge print on the back, and printed sleeve stripes, this tee takes inspiration from the vintage racing tee's of days gone by.

FABRIC: 100% cotton slub

GRAPHICS: Small printed logo on chest, large distressed print on back; printed sleeve stripes

SIZE: S-3XL
US: \$44.99

PART #: 2866273
CAN: \$59.99



FINAL SEASON

Race Raglan Tee

AVAILABLE FOR DELIVERY NOW. FINAL SEASON

This comfortable raglan tee evokes the spirit of a vintage Indian Motorcycle® racing jersey. It features contrasting sleeves and seam stitching and Indian Motorcycle® branding printed across the front, on the nape, and back hem.

FABRIC: 100% cotton slub

GRAPHICS: Large logo print on front; small logo on back; embroidered "Since 1901" at back hem; woven patch on right sleeve

SIZE: S-3XL
US: \$44.99

PART #: 2865195
CAN: \$59.99



UV Protect LS Tee

AVAILABLE FOR DELIVERY NOW

This long sleeved tee uses a bamboo charcoal coating to offer UV protection SPF50, along with thermal control, dry fast, and high wicking properties, to keep you cool and dry on those summer rides.

FABRIC: 100% polyester

GRAPHICS: Headaddress logo at front chest, icon logo at back neck, script logo on both sleeves

SIZE: S-3XL
US: \$49.99

PART #: 2867946
CAN: \$67.99



NEW
Flat Track Racer Tee

This raglan tee has a large distressed front graphic, celebrating Indian Motorcycle's return to Flat Track Racing.

FABRIC: 100% cotton slub jersey

GRAPHICS: Large distressed flat track print on front; small logo at back neck; woven patch on right sleeve

SIZE: S-3XL **PART #: 2867563**
US: \$34.99 **CAN: \$46.99**



FINAL SEASON
Stadium Tee

AVAILABLE FOR DELIVERY NOW. FINAL SEASON

HERITAGE COLLECTION

This dark grey T-Shirt features a large front graphic, which celebrates the history of Indian Motorcycle® and board track racing. The Hendee Manufacturing Company (Indian Motorcycles® original name) were pioneers in the hugely popular and dangerous sport of board track racing.

FABRIC: 100% cotton single jersey

GRAPHICS: Large stadium print on front; small distressed print at back neck; woven patch on right sleeve & back hem

SIZE: S-3XL **PART #: 2866163**
US: \$34.99 **CAN: \$46.99**



FINAL SEASON
Racer Tee

AVAILABLE FOR DELIVERY NOW. FINAL SEASON

HERITAGE COLLECTION

This navy T-Shirt celebrates the history of Indian Motorcycle® and board track racing. It shows a large distressed graphic with an example of one of the board track bikes used at the time. The Indian® factory race team was the best around.

FABRIC: 100% cotton single jersey

GRAPHICS: Large racer print on front; small print at back neck; woven patch on right sleeve & back hem

SIZE: S-3XL **PART #: 2866164**
US: \$34.99 **CAN: \$46.99**



MEN'S CASUALWEAR



NEW
IMC Quilted Hoodie

Keep warm in this quilted hoodie. With the body quilted in goose down, and contrasting sleeves and hood in a fleece backed melange, this hoodie offers all-over warmth. An Indian Motorcycle® logo patch is at the front chest.

FABRIC: Body: 69% polyester, 31% nylon
Sleeves & Hood: 100% polyester
Down: 90% goose down, 10% feather
GRAPHICS: Branded patch on chest

SIZE: S-3XL **PART #: 2867567**
US: \$169.99 **CAN: \$219.99**



IMC Hoodie

AVAILABLE FOR DELIVERY NOW

This pullover hoodie is made in a heavy fleece-backed fabric for added warmth. The front features the Indian Motorcycle® logo in applique, while the back features a large embroidered Indian Motorcycle® icon.

FABRIC: 70% cotton, 30% polyester fleeceback
GRAPHICS: Embroidered logo on front & back
ADDITIONAL FEATURES: Two hand warmer pockets; drawstring hood; contrasting stitching

SIZE: S-3XL **PART #: 2863697**
US: \$74.99 **CAN: \$99.99**



Icon Script Hoodie

AVAILABLE FOR DELIVERY NOW

This soft, all-cotton hoodie features a winning combination of red, black, and ecru, and it has handwarmer pockets and a warm drawstring hood. There is embroidered Indian Motorcycle® branding on the front and back.

FABRIC: 100% cotton loopback
GRAPHICS: Embroidered logo on front & back
ADDITIONAL FEATURES: Two hand warmer pockets with snap closure; drawstring hood

SIZE: S-3XL **PART #: 2865194**
US: \$89.99 **CAN: \$119.99**



NEW
IMC Contrast Zip Thru

This contrasting zip-thru comes in light gray and dark gray marl. It features a large back applique/embroidery on the back in antique white, and a small embroidery at the front chest. Branded zip pulls are used, along with a leather-look patch at the front hem.

FABRIC: 70% cotton, 30% polyester fleeceback
GRAPHICS: Small embroidered logo on chest, large embroidered print on back; leather-look patch on front hem; embroidered patch on right sleeve

SIZE: S-3XL **PART #: 2867566**
US: \$79.99 **CAN: \$104.99**



Quarter Zip Fleece

AVAILABLE FOR DELIVERY NOW

A classic and comfortable black fleece, with quarter zip at neck and Indian Motorcycle® branding.

FABRIC: 100% polyester fleece
GRAPHICS: Embroidered logo on front & back

SIZE: S-3XL **PART #: 2866161**
US: \$69.99 **CAN: \$89.99**



FINAL SEASON
IMC Navy Zip Thru

AVAILABLE FOR DELIVERY NOW. FINAL SEASON

This navy all cotton zip thru features a race-style neck, and a large Indian Motorcycle® applique / embroidery logo on the back, as well as a small embroidery logo on the chest.

FABRIC: 100% cotton fine french rib
GRAPHICS: Embroidered Indian Motorcycle® logo on front & back
ADDITIONAL FEATURES: Two hand warmer pockets with snap closure

SIZE: S-3XL **PART #: 2865204**
US: \$79.99 **CAN: \$104.99**



Scout® Zip Thru

AVAILABLE FOR DELIVERY NOW

A zip thru for the proud Indian® Scout® rider. Sleeve patches and large back embroidery feature Scout® and Indian Motorcycle® branding.

FABRIC: 80% cotton, 20% polyester sueded fleece

GRAPHICS: Embroidered logo on front; embroidered and applique logo on back; woven patch on left and right sleeves

SIZE: S-3XL **PART #: 2867950**
US: \$89.99 **CAN: \$119.99**



NEW
Logo Qtr Zip Knit

This quarter zip knit comes in a dark gray marl, and uses Indian Motorcycle® branding on the front in black chain embroidery, for a subtle look.

FABRIC: 100% cotton knit

GRAPHICS: Large embroidered logo on front; "Single 1901" embroidered on back neck; leather-look patch on right sleeve

SIZE: S-3XL **PART #: 2867580**
US: \$89.99 **CAN: \$119.99**



FINAL SEASON
Logo Knit Zip Thru

AVAILABLE FOR DELIVERY NOW. FINAL SEASON

A luxurious knit in 100% merino wool. This black zip thru uses antique white chain embroidery on its front Indian Motorcycle® branding for a striking look. The zip-up front includes handwarmer pockets, and a small leather patch on the right side.

FABRIC: 100% merino wool

GRAPHICS: Indian Motorcycle® logo embroidered on front & back neck

CARE: Fold, do not hang

SIZE: S-3XL **PART #: 2866278**
US: \$159.99 **CAN: \$209.99**



IMC Gray Sweat

AVAILABLE FOR DELIVERY NOW

This classic dark gray marl sweat features subtle Indian Motorcycle® branding across the front in dark gray applique and black embroidery. A small logo embroidery is placed at the back neck, and a leather patch is added to the front hem.

FABRIC: 80% cotton, 20% polyester

GRAPHICS: Large applique logo on front in felt and embroidery, small embroidered logo at back neck

SIZE: S-3XL **PART #: 2866274**
US: \$79.99 **CAN: \$104.99**



MEN'S CASUALWEAR



NEW
Navy Plaid Shirt

This soft plaid shirt features two front pockets and embroidered Indian Motorcycle® logo at the back neck. Leather-look patches are applied to the front hem and chest pocket. The buttons at the front fastening, pockets, and cuffs are all branded.

FABRIC: 100% cotton
GRAPHICS: Embroidered logo at back neck; embroidered and applique logo on back; two leather-look patches on front; branded buttons

SIZE: S-3XL **PART #: 2867586**
US: \$69.99 **CAN: \$89.99**



Plaid Gray Shirt

AVAILABLE FOR DELIVERY NOW

This plaid shirt provides added warmth with its 100% cotton woven fabric. It features subtle Indian Motorcycle® branding with a small embroidery above the left front chest pocket and small leather patches at the left front pocket and front hem.

FABRIC: 100% cotton
GRAPHICS: Small Indian Motorcycle® logo embroidery on front; leather patch on front hem

SIZE: S-3XL **PART #: 2866275**
US: \$69.99 **CAN: \$89.99**



FINAL SEASON
Script Logo Plaid Shirt

AVAILABLE FOR DELIVERY NOW. FINAL SEASON

This soft plaid shirt features two front pockets, embroidered Indian Motorcycle® branding on the left front, and large embroidered branding on the back. A small leather patch is applied to the front hem, and the snaps at the front fastening, pockets and cuffs are all branded.

FABRIC: 100% cotton plaid
GRAPHICS: Embroidered Indian Motorcycle® logo above front left pocket & on back; two leather patches on front; pearl snap buttons

SIZE: S-3XL **PART #: 2865200**
US: \$69.99 **CAN: \$89.99**



Khaki Overshirt

AVAILABLE FOR DELIVERY NOW

This heavy herringbone overshirt features subtle Indian Motorcycle® embroidery. Dark brown cord at the inner neck and cuffs, along with a heavy vintage wash and leather look patches, add a cool, relaxed, feel.

FABRIC: 100% cotton herringbone
GRAPHICS: Embroidered logo on front; leather patch on sleeve & front; small "Since 1901" embroidery at back hem

SIZE: S-3XL **PART #: 2867951**
US: \$89.99 **CAN: \$119.99**



NEW
Icon Denim Shirt

This long sleeved denim shirt has a large back print, in navy. The chest pocket and the front hem feature branded leather-look labels. Branded buttons are used on front fastening, and cuffs.

FABRIC: 100% cotton indigo denim
GRAPHICS: Leather-look patches at front hem & chest pocket; large distressed print on back; branded buttons

SIZE: S-3XL **PART #: 2867565**
US: \$69.99 **CAN: \$89.99**



FINAL SEASON
Headdress Denim Shirt

AVAILABLE FOR DELIVERY NOW. FINAL SEASON

This long sleeve denim shirt has a large distressed discharge print icon on the back in antique white. The front left pocket and the front hem both feature branded leather labels. Branded snaps are used at the front fastening, pockets, and cuffs.

FABRIC: 100% cotton
GRAPHICS: Leather patches on pocket & front hem; distressed logo print on back; pearl snap buttons

SIZE: S-3XL **PART #: 2865193**
US: \$69.99 **CAN: \$89.99**



Shop Shirt, Antique White

AVAILABLE FOR DELIVERY NOW

This shop-shirt comes in a lightweight cotton, to keep you cool and comfortable. It features a large Indian Motorcycle® print at the back, and patches on both sleeves.

FABRIC: 100% cotton

GRAPHICS: Embroidered logo on front; printed logo on back; woven patches on sleeves

SIZE: S-3XL **PART #: 2867953**
US: \$59.99 **CAN: \$79.99**



Shop Shirt, Red

AVAILABLE FOR DELIVERY NOW

This shop-shirt comes in a lightweight cotton, to keep you cool and comfortable. It features a large Indian Motorcycle® print at the back, and patches on both sleeves.

FABRIC: 100% cotton

GRAPHICS: Embroidered logo on front; printed logo on back; woven patches on sleeves

SIZE: S-3XL **PART #: 2867952**
US: \$59.99 **CAN: \$79.99**



Color Block Shirt

AVAILABLE FOR DELIVERY NOW

A classic flat collar bowling style shirt with color blocking in black, red and antique white. This shirt features strong Indian Motorcycle® branding, with a large back embroidery, two sleeve patches, and a small chest embroidery.

FABRIC: 65% polyester, 35% cotton

GRAPHICS: Embroidered logo on chest; large embroidered logo on back; branded patches on left & right sleeve

SIZE: S-3XL **PART #: 2866157**
US: \$64.99 **CAN: \$84.99**



Casual Shirt

AVAILABLE FOR DELIVERY NOW

Basic black with lots of style points including metal buttons on pockets and epaulets on this pit shirt.

FABRIC: 65% polyester, 35% cotton

GRAPHICS: Embroidered Indian Motorcycle® logo on front & back

SIZE: S-5XL **PART #: 2863698**
US: \$59.99 **CAN: \$79.99**



FINAL SEASON

Pride Shirt

AVAILABLE FOR DELIVERY NOW. FINAL SEASON

This all-cotton herringbone shirt has two front pockets, embroidered Indian Motorcycle® branding on the left front, and distressed-print graphics on the back declaring that Indian Motorcycle® is the "Pride of the American Road."

FABRIC: 100% cotton herringbone

GRAPHICS: Embroidered logo on front; distressed "Pride of the American Road" print on back

SIZE: S-3XL **PART #: 2865203**
US: \$59.99 **CAN: \$79.99**



Sleeveless Canvas Shirt

AVAILABLE FOR DELIVERY NOW

A sleeveless shirt in a woven cotton canvas. Embroidered logo on back and patch at chest.

FABRIC: 100% cotton canvas

GRAPHICS: Woven patch on chest; large embroidered logo on back; leather patch on front hem

SIZE: S-3XL **PART #: 2866158**
US: \$59.99 **CAN: \$79.99**

WOMEN'S CASUALWEAR



Lace Panel Tee
Page 55



Silver Sparkle Tee
Page 58



Fringe Tee
Page 55

WOMEN'S CASUALWEAR



NEW
Fringe Tee, Black

This black tee has fringe detailing at the sleeves, and bronze studs for a touch of bling. The Indian Motorcycle® logo is printed at the back neck in bronze foil print.

FABRIC: 50% cotton, 50% modal

GRAPHICS: Fringe & studs at armholes; foil printed logo at back neck

FIT: Relaxed Fit

SIZE: XS-3XL **PART #: 2867577**
US: \$39.99 **CAN: \$54.99**



NEW
Chiffon Sleeve Tee

A stylish dark gray tee, with contrasting chiffon sleeves. The Indian Motorcycle® logo is printed across the chest in black.

FABRIC: Body: 96% viscose, 4% spandex
Sleeves: 100% viscose chiffon

GRAPHICS: Large printed logo on front

FIT: Relaxed Fit

SIZE: XS-3XL **PART #: 2867578**
US: \$29.99 **CAN: \$39.99**



NEW
Lace Panel Tee

A soft navy long sleeved tee, with lace panelling at the front and back and the Indian Motorcycle® logo at the front chest. The sleeves have a inner tab and button, for the option of rolling up and wearing as 3/4 sleeve.

FABRIC: 58% cotton, 38% modal, 4% spandex

GRAPHICS: Front & back yoke panels in lace; small chest print

FIT: Close Fit

SIZE: XS-3XL **PART #: 2867568**
US: \$34.99 **CAN: \$46.99**



LS Black Crossover Tee
AVAILABLE FOR DELIVERY NOW

A long sleeved stretch tee, with crossover detail at the front, and gathered side panel for a flattering fit. A small Indian Motorcycle® logo is printed in a metallic silver at the front hem, and at the back neck in silver foil print with rhinestones.

FABRIC: 100% rayon

GRAPHICS: Small foil print on front hem, small foil print with rhinestones on back

FIT: Close Fit

SIZE: XS-3XL **PART #: 2867955**
US: \$34.99 **CAN: \$46.99**



Raglan Lace Tee, Black
AVAILABLE FOR DELIVERY NOW

A stylish black tee with a deep V-neck, raglan sleeve, and lace trim at the neckline. This style comes in a soft slub jersey, with a loose fit at the body and sleeves, to flatter every figure.

FABRIC: 96% viscose, 4% spandex

GRAPHICS: Logo print on back; lace detail around neck

FIT: Relaxed Fit

SIZE: XS-3XL **PART #: 2867960**
US: \$34.99 **CAN: \$46.99**



Zip Top, Gray
AVAILABLE FOR DELIVERY NOW

A fashionable zip-front top in dark gray. Featuring a peplum hem, cinched in waist, and a deep V-neck, this fashionable style has subtle branding - with the Indian Motorcycle® logo at the back neck.

FABRIC: 52% polyester, 48% rayon

GRAPHICS: Small logo print on back neck

FIT: Fashion Fit. Elasticated waist with peplum hem

SIZE: XS-3XL **PART #: 2867959**
US: \$44.99 **CAN: \$59.99**



Original Tee

AVAILABLE FOR DELIVERY NOW

This Indian Motorcycle® Red tee has been given a heavy vintage wash for an authentic look. The front print features foil-print, studs, and sequins. This style comes in a lightweight jersey, with loose fit raglan sleeves and a deep V-neck, for a flattering fit.

FABRIC: 50% cotton, 50% modal
GRAPHICS: Large front print in foil with sequin & stud details
FIT: Relaxed Fit

SIZE: XS-3XL **PART #: 2867956**
US: \$34.99 **CAN: \$46.99**



Quality Sweat, Gray

AVAILABLE FOR DELIVERY NOW

This sweat comes in a light single jersey - perfect for layering over tee's and under zip-thrus. It has a heavy vintage wash and a shaped hem for a fashionable fit. Silver foil print, black glitter print, and rhinestones are used on the front print.

FABRIC: 100% cotton single jersey
GRAPHICS: Large foil print on front with black glitter & rhinestone detail; small logo print on back
FIT: Relaxed Fit

SIZE: XS-3XL **PART #: 2867957**
US: \$54.99 **CAN: \$74.99**



Headdress Tank

AVAILABLE FOR DELIVERY NOW

The headdress tank comes in a flattering black ribbed fabric and a comfortable, relaxed fit. Classic Indian Motorcycle® headdress branding is printed on the front, in full color.

FABRIC: 65% cotton, 35% rayon rib
GRAPHICS: Distressed headdress print on front
FIT: Relaxed Fit

SIZE: XS-3XL **PART #: 2863763**
US: \$29.99 **CAN: \$39.99**



Headdress Marl Tee

AVAILABLE FOR DELIVERY NOW

This scoop neck tee comes in a stretch fabric, and is cut for a close fit to the body. A large distressed Indian Motorcycle® headdress is printed across the front in black.

FABRIC: 95% cotton, 5% elastane stretch single jersey
GRAPHICS: Large distressed headdress logo on front
FIT: Close Fit

SIZE: XS-3XL **PART #: 2866283**
US: \$29.99 **CAN: \$39.99**



Black Headdress Tee

AVAILABLE FOR DELIVERY NOW

This V-neck tee comes in a stretch fabric, and is cut for a close fit to the body. A large Indian Motorcycle® headdress is printed across the front, in a hand painted style.

FABRIC: 95% cotton, 5% spandex stretch single jersey
GRAPHICS: Distressed Indian Motorcycle® logo on front
FIT: Close Fit

SIZE: XS-3XL **PART #: 2867954**
US: \$29.99 **CAN: \$39.99**



FINAL SEASON

Icon Red Tee

AVAILABLE FOR DELIVERY NOW. FINAL SEASON

This V-neck tee comes in a stretch fabric, and is cut for a close fit to the body. A large distressed Indian Motorcycle® icon is printed across the front, with the V-neck cutting into the icon, for a modern look.

FABRIC: 95% cotton, 5% elastane stretch single jersey
GRAPHICS: Large distressed icon graphic on front
FIT: Close Fit

SIZE: XS-3XL **PART #: 2866284**
US: \$29.99 **CAN: \$39.99**

WOMEN'S CASUALWEAR



Icon Tank

AVAILABLE FOR DELIVERY NOW

This tank comes in a flattering ribbed fabric and a comfortable, relaxed fit. The Indian Motorcycle® icon is printed on the front in a white waterbased print.

FABRIC: 65% polyester, 35% rayon rib
GRAPHICS: Distressed icon print on front
FIT: Relaxed Fit

SIZE: XS-3XL
BLACK: PART #: 2866286
MARL (GRAY): PART #: 2866285
US: \$29.99 **CAN:** \$39.99



NEW

Logo Cami, Black

This simple black cami is great for layering under your favorite tees and sweats. This style is cut for a fit close to the body, and has printed branding at both the back, and the front chest. Straps are adjustable for a perfect fit.

FABRIC: 95% cotton, 5% spandex
GRAPHICS: Distressed logo on front & back
FIT: Close Fit

SIZE: XS-3XL **PART #:** 2867574
US: \$25.99 **CAN:** \$35.49



FINAL SEASON

Core Logo Tee, Navy

AVAILABLE FOR DELIVERY NOW. FINAL SEASON

This relaxed fit, all-cotton navy tee features a flattering open neckline and short sleeves. Branded graphics are printed on the left front and on the back.

FABRIC: 100% cotton single jersey
GRAPHICS: Printed & flock logo on front; distressed logo print on back
FIT: Relaxed Fit

SIZE: XS-3XL **PART #:** 2865191
US: \$29.99 **CAN:** \$39.99



Ecru Logo V-Neck Tee

AVAILABLE FOR DELIVERY NOW

This V-neck tee comes in a stretch fabric, and is cut for a close fit to the body. A large distressed Indian Motorcycle® logo is printed across the front.

FABRIC: 95% cotton, 5% spandex stretch single jersey
GRAPHICS: Distressed Indian Motorcycle® logo on the front; patch with graphics on the sleeve
FIT: Close Fit

SIZE: XS-3XL **PART #:** 2863325
US: \$29.99 **CAN:** \$39.99



Logo V-Neck Tee

AVAILABLE FOR DELIVERY NOW

This logo tee features a feminine V-neck and a relaxed fit. A distressed discharge print Indian Motorcycle® logo is printed across the front.

FABRIC: 100% cotton single jersey
GRAPHICS: Distressed logo print on front
FIT: Relaxed Fit

SIZE: XS-3XL **PART #:** 2863759
GRAY: PART #: 2863760
ANTIQUE WHITE: **FINAL SEASON**
US: \$29.99 **CAN:** \$39.99



FINAL SEASON

Red Logo Crew Neck Tee

AVAILABLE FOR DELIVERY NOW. FINAL SEASON

This red logo tee features a crew neck and a relaxed fit. A distressed discharge print Indian Motorcycle® logo is printed across the front.

FABRIC: 100% cotton single jersey
GRAPHICS: Distressed logo print on front
FIT: Relaxed Fit

SIZE: XS-3XL **PART #:** 2863761
US: \$29.99 **CAN:** \$39.99



NEW
Silver Sparkle Tee

This light gray tee fabric uses a silver foil print, for a subtle all over sparkle. The Indian Motorcycle® logo is printed across the chest in black glitter print.

FABRIC: 50% polyester, 50% rayon single jersey
GRAPHICS: Large glitter print logo on front; silver foil print speckles across fabric
FIT: Close Fit

SIZE: XS-3XL **PART #: 2867573**
US: \$29.99 **CAN: \$39.99**



NEW
Scoop Neck Tee, Pink

This scoop neck tee comes in a pink marl, with the Indian Motorcycle® logo printed across the front in distressed discharge print.

FABRIC: 100% cotton single jersey
GRAPHICS: Distressed logo on front
FIT: Relaxed Fit

SIZE: XS-3XL **PART #: 2867590**
US: \$29.99 **CAN: \$39.99**



NEW
Logo Henley, Pink

A pink marl long sleeved tee, with contrasting gray marl sleeves. The Indian Motorcycle® logo is printed large across the back, in antique white discharge print, and small on the front chest.

FABRIC: 50% polyester, 38% cotton, 12% rayon
GRAPHICS: Small Indian Motorcycle® logo on chest; large logo print on back
FIT: Relaxed Fit

SIZE: XS-3XL **PART #: 2867559**
US: \$34.99 **CAN: \$46.99**



NEW
Icon Henley, Purple

A gray marl long sleeved tee, with contrasting purple marl sleeves. Branded graphics are printed on the back, and front chest, with the back print featuring purple rhinestones.

FABRIC: 50% polyester, 38% cotton, 12% rayon
GRAPHICS: Small Indian Motorcycle® logo on chest; large logo print on back with rhinestones
FIT: Relaxed Fit

SIZE: XS-3XL **PART #: 2867560**
US: \$34.99 **CAN: \$46.99**



WOMEN'S CASUALWEAR



NEW
Logo Lace Tank, Purple

A super-soft tank with lace detail. The Indian Motorcycle® logo is printed across the front in distressed waterbased print.

FABRIC: 48% cotton, 47% modal, 5% spandex
GRAPHICS: Large distressed logo print on front; lace detail
FIT: Close Fit

SIZE: XS-3XL **PART #:** 2867575
US: \$29.99 **CAN:** \$39.99



NEW
Logo Lace Tank, Marl

A super-soft tank with lace detail. The Indian Motorcycle® logo is printed across the front in distressed discharge print.

FABRIC: 48% cotton, 47% modal, 5% spandex
GRAPHICS: Large distressed logo print on front; lace detail
FIT: Close Fit

SIZE: XS-3XL **PART #:** 2867576
US: \$29.99 **CAN:** \$39.99



FINAL SEASON
IMC Tee, Pink

AVAILABLE FOR DELIVERY NOW. FINAL SEASON

A long sleeved tee in a feminine pink cotton slub. This relaxed fit tee features a scoop neckline and a shaped hem for a flattering look. A large discharge print graphic is on the front and a small print is at the back neck.

FABRIC: 100% cotton slub jersey
GRAPHICS: Large front print; small print on back neck
FIT: Relaxed Fit

SIZE: XS-3XL **PART #:** 2866287
US: \$39.99 **CAN:** \$54.99



FINAL SEASON
IMC Tee, Purple

AVAILABLE FOR DELIVERY NOW. FINAL SEASON

A short sleeved tee in a feminine purple cotton slub. This relaxed fit tee features a scoop neckline and a shaped hem for a flattering look. A large discharge print graphic is on the front and a small print is at the back neck.

FABRIC: 100% cotton slub jersey
GRAPHICS: Large front print; small print at back neck
FIT: Relaxed Fit

SIZE: XS-3XL **PART #:** 2866288
US: \$34.99 **CAN:** \$46.99



NEW
Star Tee

A raglan sleeve tee in a lightweight slub, with contrast back in broderie anglais. This style comes in a comfortable relaxed fit and is garment dyed which gives an inconsistent and faded look to the garment, and adds to its vintage feel. The front graphic features the Indian Motorcycle® logo, and is in a matte metallic print.

FABRIC: Body & Sleeves: 100% cotton slub jersey; Back: 60% cotton, 40% nylon broderie anglais
GRAPHICS: Large metallic print on front; back panel in broderie anglais
FIT: Relaxed Fit

SIZE: XS-3XL **PART #: 2867668**
US: \$44.99 **CAN: \$59.99**



FINAL SEASON
LS Diamond Tee, Gray

AVAILABLE FOR DELIVERY NOW. FINAL SEASON
A long sleeve tee in a lightweight slub, with contrast back in broderie anglais. This style is garment dyed which gives an inconsistent and faded look to the garment and adds to its vintage feel. The front graphic features the Indian Motorcycle® logo in a matte, metallic print.

FABRIC: Body & Sleeves: 100% cotton slub jersey; Back: 60% cotton, 40% nylon broderie anglais
GRAPHICS: Large metallic diamond print on front; back panel in broderie anglais
FIT: Relaxed Fit

SIZE: XS-3XL **PART #: 2866280**
US: \$49.99 **CAN: \$67.99**



FINAL SEASON
Glitter Icon Tee, Purple

AVAILABLE FOR DELIVERY NOW. FINAL SEASON
A long sleeve tee in a lightweight slub, with contrast back in broderie anglais. This style comes in a comfortable relaxed fit and is garment dyed which gives an inconsistent and faded look to the garment, and adds to its vintage feel. The front graphic features the Indian Motorcycle® logo in a matte metallic silver and navy glitter print.

FABRIC: Body & Sleeves: 100% cotton slub jersey; Back: 60% cotton, 40% nylon broderie anglais
GRAPHICS: Large metallic & navy glitter print on front; back panel in broderie anglais
FIT: Relaxed Fit

SIZE: XS-3XL **PART #: 2866282**
US: \$49.99 **CAN: \$67.99**



FINAL SEASON
Stars Wreath Tank
AVAILABLE FOR DELIVERY NOW. FINAL SEASON

In a lightweight slub, with contrast back in broderie anglais. This style is garment dyed which gives an inconsistent and faded look to the garment, and adds to its vintage feel. The front graphic features the Indian Motorcycle® headdress in a matte metallic print.

FABRIC: Front: 100% cotton slub jersey; Back: 60% cotton, 40% nylon broderie anglais
GRAPHICS: Large distressed metallic print on front; back panel in broderie anglais
FIT: Relaxed Fit

SIZE: XS-3XL **PART #: 2866169**
US: \$39.99 **CAN: \$54.99**



FINAL SEASON
Stars Wreath Tee, Navy
AVAILABLE FOR DELIVERY NOW. FINAL SEASON

A raglan 3/4 sleeve tee in a lightweight slub, with contrast back in broderie anglais. This style is garment dyed which gives an inconsistent and faded look to the garment, and adds to its vintage feel. The front graphic features the Indian® headdress logo in a matte, metallic print.

FABRIC: Body & Sleeves: 100% cotton slub jersey; Back: 60% cotton, 40% nylon broderie anglais
GRAPHICS: Large metallic print on front; back panel in broderie anglais
FIT: Relaxed Fit

SIZE: XS-3XL **PART #: 2866281**
US: \$49.99 **CAN: \$67.99**



WOMEN'S CASUALWEAR



Logo Zip Thru

AVAILABLE FOR DELIVERY NOW

This cozy all cotton zip thru features antique white and navy contrasting panels in a knit finish. It has hand warmer pockets and Indian Motorcycle® branding on the front chest and back.

FABRIC: 100% cotton knit

GRAPHICS: Embroidered logo on front; embroidered & applique logo on back

CARE: Fold, do not hang

SIZE: XS-3XL
US: \$79.99

PART #: 2865202
CAN: \$104.99



V-Neck Raglan Hoodie

AVAILABLE FOR DELIVERY NOW

This pullover hoodie offers a comfortable yet feminine fit, with a deep V-neck and pink contrasting sleeves and hood. The Indian Motorcycle® logo is across the front in applique & embroidery.

FABRIC: 65% cotton, 35% polyester

GRAPHICS: Applique & embroidered Indian Motorcycle® logo on front

SIZE: XS-3XL
US: \$64.99

PART #: 2866289
CAN: \$84.99



Contrast Zip Thru

AVAILABLE FOR DELIVERY NOW

Contrasting black and cream-colored panels are combined to create a chic, flattering look. There's a full-zip front, handwarmer pockets, and Indian Motorcycle® branding on the left front and back.

FABRIC: 70% cotton, 30% polyester fleecelback

GRAPHICS: Embroidered logo on front; embroidered and applique logo on back

ADDITIONAL FEATURES: Two zip-closure pockets; contrasting two-color stripes across shoulders & down the sleeves; snap collar closure

SIZE: XS-3XL
US: \$64.99

PART #: 2865205
CAN: \$84.99



Zip Thru

AVAILABLE FOR DELIVERY NOW

This zip thru features bold Indian Motorcycle® branding, with a large applique and embroidered icon on the back, and a small chest logo. The fabric is a cotton/poly fleecelback, for added warmth.

FABRIC: 70% cotton, 30% polyester fleecelback

GRAPHICS: Embroidered logo on left front, embroidered & applique icon graphic on back

ADDITIONAL FEATURES: Two zip-closure pockets; contrasting two-color stripes across shoulders & down the sleeves; snap collar closure

SIZE: XS-3XL
US: \$59.99

PART #: 2863756
CAN: \$79.99



Color Block Shirt

AVAILABLE FOR DELIVERY NOW

A classic flat collar bowling style shirt. With color blocking in black, Indian Motorcycle® red and antique white. This shirt features strong branding, with a large back embroidery, two sleeve patches, and a small chest embroidery.

FABRIC: 65% polyester, 35% cotton

GRAPHICS: Embroidered logo on front & back; branded patches on left and right sleeve

SIZE: XS-3XL **PART #: 2866156**
US: \$59.99 **CAN: \$79.99**



Icon Shirt, Black

AVAILABLE FOR DELIVERY NOW

In a black stretch cotton, this shirt is a wardrobe staple for any Indian Motorcycle® fan.

FABRIC: 98% cotton, 2% spandex

GRAPHICS: Embroidered logo on front; large woven patch on back

FIT: Close Fit

SIZE: XS-3XL **PART #: 2867958**
US: \$59.99 **CAN: \$79.99**



FINAL SEASON

Long Sleeve Bodysuit 2 Pack

AVAILABLE FOR DELIVERY NOW. FINAL SEASON

Young riders of tomorrow can show their Indian Motorcycle® pride with this Long Sleeve Bodysuit. It provides comfortable coverage and features distinctive Indian Motorcycle® branding.

FABRIC: 100% cotton

GRAPHICS: Printed logo on front; motorcycle graphic on back; 2 pack of alternating colors

SIZE: **PART #:**
3-6 MONTH/ S **286380802**
6-12 MONTH/ M **286380803**
12-18 MONTH/ L **286380806**
US: \$34.99 **CAN: \$46.99**



EYEWEAR



Entry Sunglasses

AVAILABLE FOR DELIVERY NOW

The first price point Entry Sunglasses are designed to be worn when riding and include an EVA foam eyecup to reduce wind and peripheral light. CE certified. Directive 89/686/EEC Lens Filter Category 3.

FRAME: Lightweight TR90 Nylon matte black frame

LENS: Gray Polycarbonate lens

ADDITIONAL FEATURES: 100% UVA+UVB protection, shatter-resistant, anti-fog coating, non-detachable EVA foam eyecup to reduce wind & peripheral light for a more comfortable ride.

SIZE: ONE SIZE **PART #: 2863996**
US: \$29.99 **CAN: \$39.99**



Lifestyle Sunglasses

AVAILABLE FOR DELIVERY NOW

The Lifestyle Sunglasses look great on or off the bike, made from lightweight polycarbonate frame and with a shatter resistant UVA/UVB lens. CE certified. Directive 89/686/EEC Lens Filter Category 3.

FRAME: Lightweight Polycarbonate matte black frame

LENS: Brown Polycarbonate lens

ADDITIONAL FEATURES: 100% UVA+UVB protection, shatter resistant, anti-fog coating. Prescription ready.

SIZE: ONE SIZE **PART #: 2863973**
US: \$29.99 **CAN: \$39.99**



Semi Pro Sunglasses

AVAILABLE FOR DELIVERY NOW

The Semi Pro sunglasses offer superior performance levels. Made from a lightweight and hard wearing nylon frame with a polycarbonate lens, these glasses include a detachable EVA foam eye-cup so you can wear in comfort while riding and also when not. CE certified. Directive 89/686/EEC Lens Filter Category 3. Impact Resistance Level 2.

FRAME: Lightweight TR90 Nylon matte black frame

LENS: Gray Polycarbonate lens

ADDITIONAL FEATURES: 100% UVA+UVB protection, shatter-resistant, detachable EVA foam eyecup. Prescription ready.

SIZE: ONE SIZE **PART #: 2864404**
US: \$59.99 **CAN: \$79.99**



Performance Sunglasses

AVAILABLE FOR DELIVERY NOW

The riders choice, the Performance Sunglasses offer a wide range of features for your riding needs. From the high quality, lightweight Rochflex frame to the quick reacting photochromic lens that changes from clear to gray depending on the light. The PU foam eye-cup offers superior wind and peripheral light protection meaning you can concentrate on the road. CE certified. Directive 89/686/EEC Lens Filter Category 1-3. Impact Resistance Level 2.

FRAME: High quality and lightweight RochFlex glossy black frame

LENS: Photochromic Eclipse Polycarbonate lens which changes from clear to gray in 50 seconds when UV light hits the lens. Transition time from dark to clear is about 60 to 90 seconds.

ADDITIONAL FEATURES: 100% UVA+UVB protection, shatter-resistant, anti-fog coating, detachable latex-free PU foam eyecup with sweat resistant patented rubber-seal on top of foam for superior protection against wind & peripheral light. Prescription ready.

SIZE: ONE SIZE **PART #: 2864405**
US: \$99.99 **CAN: \$129.99**

INDIAN MOTORCYCLE® EYEWEAR

The Indian Motorcycle® eyewear range has been developed not only to look great but also perform when riding. The Entry, Semi-Pro and Performance sunglasses offer riding specific features such as lightweight frames, shatter resistant lenses and wind-reducing eye-cups. The Performance Sunglasses offer a transition lens option with photo-chromic technology that reacts quickly to dark and light riding conditions meaning you can wear them all day.

The Lifestyle, Semi-Pro and Performance sunglasses are also prescription ready. 7eye by Panoptx provides repair services and prescription lenses at additional cost. Please consult local laws regarding overseas made prescription lenses. For quotations, please contact 7eye by Panoptx USA at (001) 909-509-8228 or info@7eye.com



HEADGEAR



NEW
Headdress Logo Hat

AVAILABLE FOR DELIVERY IN JUNE

GRAPHICS: Embroidered patch
ADDITIONAL FEATURES: Adjustable plastic closure at back, flat skip style

SIZE: ONE SIZE **PART #: 2867609**
US: \$19.99 **CAN: \$29.99**



Quality Trucker Hat

AVAILABLE FOR DELIVERY NOW

TRUCKER

GRAPHICS: Embroidered patch on front; embroidered "Since 1901" on back
ADDITIONAL FEATURES: Adjustable plastic closure at back

SIZE: ONE SIZE **PART #: 2862313**
US: \$19.99 **CAN: \$26.99**



Established Hat

AVAILABLE FOR DELIVERY NOW

GRAPHICS: Embroidered logo on front & side
ADDITIONAL FEATURES: Adjustable leather strap at back

SIZE: ONE SIZE **PART #: 2864427**
US: \$19.99 **CAN: \$26.99**



Waxed Cotton Hat

AVAILABLE FOR DELIVERY NOW

GRAPHICS: Embroidered logo patch on front
ADDITIONAL FEATURES: Adjustable leather strap at back

SIZE: ONE SIZE **PART #: 2864428**
US: \$19.99 **CAN: \$26.99**



Leather Patch Hat

AVAILABLE FOR DELIVERY NOW

GRAPHICS: Leather icon logo patch on front
ADDITIONAL FEATURES: Adjustable plastic closure at back

SIZE: ONE SIZE **PART #: 2863999**
US: \$19.99 **CAN: \$26.99**



IMC Trucker Hat

AVAILABLE FOR DELIVERY NOW

TRUCKER

GRAPHICS: Embroidered logo on front; leather patch on side
ADDITIONAL FEATURES: Adjustable plastic closure at back, mesh back

SIZE: ONE SIZE **PART #: 2864402**
US: \$19.99 **CAN: \$26.99**



Scout® Trucker Hat

AVAILABLE FOR DELIVERY NOW

GRAPHICS: Woven Scout® patch on front
ADDITIONAL FEATURES: Adjustable plastic closure at back, mesh back

SIZE: ONE SIZE **PART #: 2865229**
US: \$19.99 **CAN: \$26.99**



5 Panel Scout® Hat

AVAILABLE FOR DELIVERY NOW

GRAPHICS: Embroidered Scout® logo on front; "The Legend is Back" embroidered on back
ADDITIONAL FEATURES: Adjustable plastic closure at back, Indian Motorcycle® monogram logos printed on lining

SIZE: ONE SIZE **PART #: 2865230**
US: \$19.99 **CAN: \$26.99**



Circle Patch Hat

AVAILABLE FOR DELIVERY NOW

GRAPHICS: Embroidered icon graphic on front; graphic patch on the side
ADDITIONAL FEATURES: Adjustable back strap with metal clasp

SIZE: ONE SIZE **PART #: 2863628**
US: \$19.99 **CAN: \$26.99**

TRUCKER



Quilt Stitch Hat

AVAILABLE FOR DELIVERY NOW

GRAPHICS: Embroidered logo on front & "Since 1901" on back

ADDITIONAL FEATURES: Stretch headband; quilted front panels

SIZE: ONE SIZE **PART #: 2865231**
US: \$19.99 **CAN: \$26.99**



Original Hat

AVAILABLE FOR DELIVERY NOW

GRAPHICS: Embroidered Indian Motorcycle® logo on front; printed logo on back

ADDITIONAL FEATURES: Adjustable Velcro® closure at back

SIZE: ONE SIZE **PART #: 2863629**
US: \$19.99 **CAN: \$26.99**



Logo Hat

AVAILABLE FOR DELIVERY NOW

GRAPHICS: Embroidered Indian Motorcycle® Script logo on front and back

ADDITIONAL FEATURES: Stretch headband

SIZE: ONE SIZE **PART #: 2863631**
US: \$19.99 **CAN: \$26.99**



Gray Logo Hat

AVAILABLE FOR DELIVERY NOW

GRAPHICS: Embroidered Indian Motorcycle® logo on front; screen printed logo on back

ADDITIONAL FEATURES: Adjustable Velcro® closure at back

SIZE: ONE SIZE **PART #: 2863725**
US: \$19.99 **CAN: \$26.99**



Black Logo Hat

AVAILABLE FOR DELIVERY NOW

GRAPHICS: Embroidered Indian Motorcycle® logo on front; screen printed logo on back

ADDITIONAL FEATURES: Adjustable Velcro® closure at back

SIZE: ONE SIZE **PART #: 2863727**
US: \$19.99 **CAN: \$26.99**



FINAL SEASON

Munro Hat

AVAILABLE FOR DELIVERY NOW. FINAL SEASON

GRAPHICS: Embroidered and felted front World's Fastest Motorcycle graphics; graphic patch on the side; Bonneville Salt Flats embroidered on back

ADDITIONAL FEATURES: Adjustable back strap with metal clasp; mesh back

SIZE: ONE SIZE **PART #: 2863724**
US: \$19.99 **CAN: \$26.99**



First Hat

AVAILABLE FOR DELIVERY NOW

GRAPHICS: Embroidered Indian Motorcycle® headdress logo; tag on side

ADDITIONAL FEATURES: Adjustable back strap with metal clasp; mesh back

SIZE: ONE SIZE **PART #: 2863726**
US: \$19.99 **CAN: \$26.99**



Army Hat

AVAILABLE FOR DELIVERY NOW

GRAPHICS: Embroidered script logo

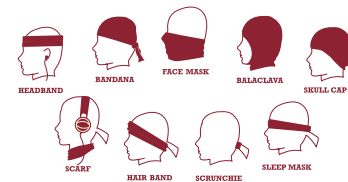
ADDITIONAL FEATURES: Adjustable fabric strap in back with metal clasp

SIZE: ONE SIZE **PART #: 2863634**
US: \$19.99 **CAN: \$26.99**

TRUCKER



HEADGEAR



NEW
Be Legendary™ Headband

AVAILABLE FOR DELIVERY IN JUNE

Made of cotton with a discharge print. Elasticated rear band for close fit.

GRAPHICS: Large distressed print
ADDITIONAL FEATURES: Elastic band at rear for adjustability

SIZE: ONE SIZE **PART #: 2867605**
US: \$14.99 **CAN: \$22.99**



Head Tie

AVAILABLE FOR DELIVERY NOW

This cotton head tie features large Indian Motorcycle® branding across the front, multiple print logos, and an elasticized rear band for a comfortable fit. It also ties in the back.

GRAPHICS: Discharge print of Indian Motorcycle® logos
ADDITIONAL FEATURES: Elastic rear band for adjustability; tie fasten at back

SIZE: ONE SIZE **PART #: 2865234**
US: \$14.99 **CAN: \$19.99**



Multifunctional Headwear

AVAILABLE FOR DELIVERY NOW

Multifunctional stretchy headwrap with all over logo print. Wear it in your own style.

GRAPHICS: Tiled logos
ADDITIONAL FEATURES: Nine reference styles provided

SIZE: ONE SIZE **PART #: 2865233**
US: \$14.99 **CAN: \$19.99**



NEW
Be Legendary™ Bandana

AVAILABLE FOR DELIVERY IN JUNE

Two way bandana print - fold in half for two different styles as you wish. 23.6" (60cm) x 23.6" (60cm).

GRAPHICS: Tiled script logo & large icon logo

SIZE: ONE SIZE **PART #: 2867608**
US: \$14.99 **CAN: \$22.99**



Indian Motorcycle® Bandana

AVAILABLE FOR DELIVERY NOW

There's no limit to the ways an Indian Motorcycle® rider can use and wear this soft, stylish bandana. It features a repeating pattern of branded graphics on a full-sized bandana that can be worn or used in many ways. 23.6" (60cm) x 23.6" (60cm).

GRAPHICS: Printed script & headress logos

SIZE: ONE SIZE **PART #: 2863846**
US: \$14.99 **CAN: \$19.99**



Cotton Linen Scarf

AVAILABLE FOR DELIVERY NOW

Unisex lightweight and comfortable scarf made of cotton and linen mix. It features the discharge print logo and the signature Indian Motorcycle® red and cream colors with wrinkle finishing. Size: 78.7" (200cm) x 19.7" (50cm).

GRAPHICS: Indian Motorcycle® script logo

SIZE: ONE SIZE **PART #: 2864426**
US: \$24.99 **CAN: \$32.99**





NEW

Icon Head Wrap

AVAILABLE FOR DELIVERY IN JUNE

Embroidered patch logo at front and embroidered stitching at rear. Tie fasten back for close fit.

GRAPHICS: Woven patch on front; embroidered script logo at rear

ADDITIONAL FEATURES: Tie fasten at back

SIZE: ONE SIZE **PART #: 2867606**
US: \$19.99 **CAN: \$29.99**



NEW

Script Icon Skull Wrap

AVAILABLE FOR DELIVERY IN JUNE

All over script logo print in tonal black. Elastic and tie at rear for a close fit.

GRAPHICS: Felted patch on front; all over tonal black script logo print; embroidered script logo at rear

ADDITIONAL FEATURES: Tie fasten at back

SIZE: ONE SIZE **PART #: 2867607**
US: \$19.99 **CAN: \$29.99**



Head Wrap

AVAILABLE FOR DELIVERY NOW

This Head Wrap provides all-day comfort and classic rider style. Enhances comfort when worn inside a helmet. There are Indian Motorcycle® logos on the front and back, and an adjustable tie closure at the back.

GRAPHICS: Printed script logo on front; headdress logo on back

ADDITIONAL FEATURES: Tie fasten at back

SIZE: ONE SIZE **PART #: 2863844**
US: \$19.99 **CAN: \$26.99**



Skull Wrap

AVAILABLE FOR DELIVERY NOW

This Skull Wrap provides extra comfort in all conditions when it's worn inside a helmet. An elastic panel at the rear provides a comfortable fit for virtually every rider.

GRAPHICS: Printed script logo on front; headdress logo on back

ADDITIONAL FEATURES: Elastic band at back

SIZE: ONE SIZE **PART #: 2863845**
US: \$19.99 **CAN: \$26.99**



Icon Fleece Beanie

AVAILABLE FOR DELIVERY NOW

Debossed icon logo at side, embroidered logos on front and back, made of polyester fleece shell fabric and jersey lining.

GRAPHICS: Embroidered logo, debossed graphics

SIZE: ONE SIZE **PART #: 2863997**
US: \$24.99 **CAN: \$32.99**



Icon Fleece Neck Warmer

AVAILABLE FOR DELIVERY NOW

Two debossed logos on sides, embroidered logos on front, made of polyester fleece shell fabric and jersey lining with elastic toggle.

GRAPHICS: Embroidered logo, debossed graphics
ADDITIONAL FEATURES: Toggle adjuster

SIZE: ONE SIZE **PART #: 2863998**
US: \$24.99 **CAN: \$32.99**



BAGS & LUGGAGE



FINAL SEASON

Backpack

AVAILABLE FOR DELIVERY NOW. FINAL SEASON

This Backpack is stylish, versatile and large enough to carry everything from a laptop to a rain suit and much more. It features premium heavy-duty polyester with leather trim, grab handle and adjustable shoulder straps. The main cargo areas feature interior lining to protect items. Additional features: fleece-lined laptop pocket, magnet closing top flap, earphone cord hole, inner zip pocket, and durable brass YKK® zippers. Bag dimensions: 18.1" (46cm) high x 11" (28cm) wide x 6.2" (16cm) deep.

SIZE: ONE SIZE PART #: 2863872
US: \$109.99 CAN: \$144.99



FINAL SEASON

Gym Bag

AVAILABLE FOR DELIVERY NOW. FINAL SEASON

This bag is stylish, versatile, durable and large enough to carry a wide variety of gear. This bag features premium heavy-duty polyester with leather trim and handles. The large main cargo space closes with a heavy-duty brass YKK® zipper and there are three additional zippered cargo spaces. Bag dimensions: 22" (56cm) long x 12.5" (32cm) high x 9.4" (24cm) wide.

SIZE: ONE SIZE PART #: 2863874
US: \$139.99 CAN: \$179.99



FINAL SEASON

Messenger Bag

AVAILABLE FOR DELIVERY NOW. FINAL SEASON

This bag is stylish, versatile, durable and large enough to carry most laptops with 15" displays. It features premium heavy-duty polyester, leather trim and handles, an adjustable shoulder strap, and multiple interior and exterior cargo pockets. Fleece-lined interior protects items and the corners of the main opening feature elastic inserts so it's easy to insert and remove a large laptop. Bag dimensions: 15.7" (40cm) long x 11.8" (30cm) high x 4.7" (12cm) wide.

SIZE: ONE SIZE PART #: 2863875
US: \$119.99 CAN: \$155.99



Cabin Luggage

AVAILABLE FOR DELIVERY NOW

Savvy travelers will love the Indian Motorcycle® branded Cabin Luggage. It fits into standard airline overhead storage spaces and rolls easily on durable wheels. A retractable handle makes it easy to pull this bag, and there are two grab handles so the bag can be lifted from any direction. Multiple zippered storage spaces offer impressive cargo capacity. It has a heavy duty polyester shell fabric, polyester lining, and leather trim. 15" padded internal laptop compartment. Bag dimensions: 22" (56cm) high x 13.8" (35cm) wide x 9.8" (25cm) deep.

SIZE: ONE SIZE PART #: 2863916
US: \$179.99 CAN: \$234.99





FINAL SEASON

Waistpack

AVAILABLE FOR DELIVERY NOW. FINAL SEASON

This versatile, durable unisex Waistpack will keep personal items secure, protected, and close at hand. It features durable polyester construction, an adjustable waist band, durable clip closure, multiple zippered cargo pockets, and Indian Motorcycle® branding. Bag dimensions: 6.2" (16cm) high x 11" (28cm) wide x 4.7" (12cm) deep.



SIZE: ONE SIZE **PART #: 2863912**
US: \$39.99 **CAN: \$54.99**

Wash Bag

AVAILABLE FOR DELIVERY NOW

A classic Wash Bag takes on extra style with Indian Motorcycle® branding. This durable Cordura® black bag features embossed leather Indian Motorcycle® branding on both sides of the exterior and branded zipper pull and snaps. This bag is lined and roomy enough to carry toiletries or be used to carry other small items. Bag dimensions: 9" (23cm) long x 5.1" (13cm) high x 5.1" (13cm) wide.



SIZE: ONE SIZE **PART #: 2863873**
US: \$34.99 **CAN: \$46.99**

Women's Cross Body Bag

AVAILABLE FOR DELIVERY NOW

Here's a stylish and convenient way for women riders to carry small items such as their phone, keys, glasses, and more. This premium leather bag has an embossed Indian Motorcycle® logo on the flap and branded fabric lining. The flap closes securely with snap button, and the shoulder strap is adjustable and removable. This bag comes with a soft brushed-cotton drawstring bag, perfect for gift giving. Bag dimensions: 8.6" (22cm) wide x 7" (18cm) high x 3.1" (8cm) deep.



SIZE: ONE SIZE **PART #: 2863911**
US: \$89.99 **CAN: \$119.99**

SMALL LEATHER GOODS



NEW

Bi-Fold Wallet, Black

AVAILABLE FOR DELIVERY IN JUNE

This wallet features high quality leather, embossed brand logo and branded lining. 3.7" (9.5cm) high x 4.3" (11cm) wide.

SIZE: ONE SIZE PART #: 2867600
US: \$39.99 CAN: \$55.99



NEW

Biker Chain Wallet, Black

AVAILABLE FOR DELIVERY IN JUNE

This wallet features high quality leather, embossed brand logo, branded lining, multiple compartments and a heavy metal chain. 3.7" (9.4cm) high x 7" (17.8cm) wide.

SIZE: ONE SIZE PART #: 2867599
US: \$59.99 CAN: \$83.99

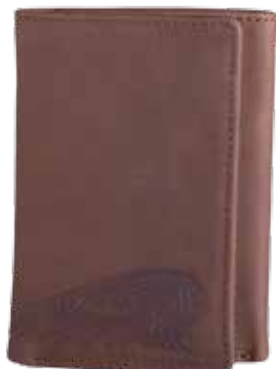


Bi-Fold Wallet

AVAILABLE FOR DELIVERY NOW

This premium leather Bi-Fold Wallet provides an efficient, secure, and stylish way to carry valuables. There's a long pocket for currency and several stacked slot pockets in which cards can be stored and remain visible for quick access. Features branded lining and embossed logo. 3.7" (9.5cm) high x 4.3" (11cm) wide.

SIZE: ONE SIZE PART #: 2863853
US: \$39.99 CAN: \$54.99



Tri-Fold Wallet

AVAILABLE FOR DELIVERY NOW

This premium leather Tri-Fold Wallet provides a spacious, efficient, secure, and stylish way to carry valuables. There's a long pocket for currency and several stacked slot pockets in which cards can be stored and remain visible for quick access. Features branded lining and embossed logo. 4.3" (11cm) high x 3.7" (9.5cm) wide.

SIZE: ONE SIZE PART #: 2863854
US: \$39.99 CAN: \$54.99



Biker Chain Wallet

AVAILABLE FOR DELIVERY NOW

An Indian Motorcycle® rider will enjoy greater peace of mind with this Biker Chain Wallet. It has a strong metal chain that clips onto a belt loop to ensure the wallet is not dropped or misplaced. There's a long pocket for currency, several stacked slot pockets in which cards can be stored and remain visible for quick access, and a clear vinyl window over a center slot that's ideal for a driver's license or favorite photo. Features branded lining and embossed logo. 4.3" (11cm) high x 3.7" (9.5cm) wide.

SIZE: ONE SIZE PART #: 2863857
US: \$39.99 CAN: \$54.99



NEW

Leather FOB Key Carrier

AVAILABLE FOR DELIVERY NOW

Real leather pouch to carry your bike key FOB in style. Embossed lock and unlock detailing at the back so you don't have to remove the key to use. Magnetic snap fastener included. (Key FOB not included.) 5.5cm x 5.5cm

SIZE: ONE SIZE PART #: 2867558
US: \$19.99 CAN: \$29.99



FINAL SEASON

Luggage Tag

AVAILABLE FOR DELIVERY NOW. FINAL SEASON

Adjustable buckle for easy fastening. Comes with five name cards for interchange. Team with Indian Motorcycle® Cabin Luggage or Lanyard for your perfect journey. 3.9" (10cm) tall x 2.6" (6.5cm) wide.

SIZE: ONE SIZE PART #: 2863934
US: \$24.99 CAN: \$32.99



Leather Notebook

AVAILABLE FOR DELIVERY NOW

The premium leather cover of this notebook has embossed branding on the front and back, a snap button closure, and cotton lining. Inside is a notebook of 50 sheets of branded paper, and the notebook comes in a gift box. 8.3" (21cm) high x 5.9" (15cm) wide.

SIZE: ONE SIZE PART #: 2863913
US: \$49.99 CAN: \$67.99



Notebook Refill, 2PK

AVAILABLE FOR DELIVERY NOW

These notebook refills can be used in the Leather Notebook or on their own. They feature premium-quality paper with an Indian Motorcycle® logo watermark. 7.5" (19cm) high x 5.2" (13.2cm) wide.

SIZE: ONE SIZE PART #: 2863914
US: \$9.99 CAN: \$14.99



Leather Money Clip

AVAILABLE FOR DELIVERY NOW

This Leather Money Clip is ideal for riders who want minimal bulk in a wallet or money clip. This leather clip with Indian Motorcycle® branding holds a combination of cards and currency. 1" (2.5cm) high x 2.6" (6.5cm) wide.

SIZE: ONE SIZE PART #: 2863859
US: \$14.99 CAN: \$19.99



Leather Lanyard

AVAILABLE FOR DELIVERY NOW

This lanyard features a detachable snap buckle. Can use with Indian Motorcycle® Luggage Tag. 15.7" (40cm) long.

SIZE: ONE SIZE PART #: 2863943
US: \$19.99 CAN: \$26.99

MAN CAVE, GARAGE & OUTDOOR





P. 77



P. 78



P. 79

MAN CAVE, GARAGE & OUTDOOR



NEW

Indian Motorcycle® Pint Glass

AVAILABLE FOR DELIVERY IN JUNE

Embossed tall pint glass. Dishwasher safe. 17.6oz. (500ml) Base: 2.7" (6.8cm) wide Top: 3.1" (7.9cm) wide x 9.6" (24.5cm) tall.

SIZE: ONE SIZE **PART #: 2867603**
US: \$10.99 **CAN: \$15.99**



NEW

Glass Beer Mug

AVAILABLE FOR DELIVERY IN JUNE

Textured beer glass with Indian Motorcycle® logo decal. Dishwasher safe. 21oz. (610ml) 3.4" (8.7cm) wide x 6.3" (16cm) tall.

SIZE: ONE SIZE **PART #: 2867604**
US: \$10.99 **CAN: \$15.99**



Indian Motorcycle® Shot Glass

AVAILABLE FOR DELIVERY NOW

Set of 4 unique 2oz shot glasses. Dishwasher safe. Perfect for evening party with friends. Comes with stylish cylinder tin packaging. Great idea for a gift!

SIZE: 4 PACK **PART #: 2863915**
US: \$29.99 **CAN: \$39.99**



Coasters

AVAILABLE FOR DELIVERY NOW

Enjoy your beverage while protecting your table or bar with Indian Motorcycle® metal tin coasters. Set includes six different tin coasters with cork bottoms. Size: 9cm diameter.

SIZE: SET OF 6 **PART #: 2864418**
US: \$19.99 **CAN: \$26.99**



2-in-1 Corkscrew & Wine Stopper

AVAILABLE FOR DELIVERY NOW

Enjoy wine without the troubles of too many gadgets laying around. This 2-in-1 Corkscrew and Wine Stopper will serve all your needs. Keep it at home or carry on road trips. 2.8" (7cm) x 5.5" (14cm).

SIZE: ONE SIZE **PART #: 2863993**
US: \$13.99 **CAN: \$18.99**



Indian Motorcycle® Badge Logo Bottle Opener

AVAILABLE FOR DELIVERY NOW

Pop tops in style with this premium metal Bottle Opener. It features a stylish design, efficient bottle opener, and red and silver Indian Motorcycle® logo. "2.4" (6cm) wide x 3.3" (8.5cm) tall.

SIZE: ONE SIZE **PART #: 2863852**
US: \$13.99 **CAN: \$18.99**



Indian Motorcycle® Slap Koozie

AVAILABLE FOR DELIVERY NOW

Keep your beverage cool and your hands warm with the Indian Motorcycle® slap koozie. 9" (23cm) wide x 3.1" (8cm) tall.

SIZE: ONE SIZE **PART #: 2863959**
US: \$6.99 **CAN: \$10.49**





NEW

Indian Motorcycle® Embossed Mug

AVAILABLE FOR DELIVERY IN JUNE

Embossed Indian Motorcycle® logo. Microwave & dishwasher safe. 17.6oz. (500ml) 3.5" (9cm) wide x 4.1" (10.4cm) tall.

SIZE: ONE SIZE **PART #: 2867601**
US: \$14.99 **CAN: \$22.49**



NEW

Logo Barrel Mug

AVAILABLE FOR DELIVERY IN JUNE

Barrel shaped mug with a matte black finish. Microwave & dishwasher safe. 18.6oz. (530ml) 5.2" (13.3cm) wide x 4.3" (11cm) tall.

SIZE: ONE SIZE **PART #: 2867602**
US: \$12.99 **CAN: \$19.99**



Indian Motorcycle® Thunder Stroke® Mug

AVAILABLE FOR DELIVERY NOW

Dishwasher safe. Contrast rim color with Thunder Stroke® 111 and Indian Motorcycle® logo. Hard wearing travel accessory for road trips or the kitchen. 5.5" (14cm) wide x 3.5" (9cm) tall.

SIZE: 17oz **PART #: 2863946**
US: \$9.99 **CAN: \$14.99**



Indian Motorcycle® Scout® Mug

AVAILABLE FOR DELIVERY NOW

Dishwasher safe. Contrast rim color with Indian Scout® logo. Hard wearing travel accessory for road trips or the kitchen. 5.5" (14cm) wide x 3.5" (9cm) tall.

SIZE: 17oz **PART #: 2863947**
US: \$9.99 **CAN: \$14.99**



Sports Water Bottle

AVAILABLE FOR DELIVERY NOW

Aluminium Sports Water Bottle in matte black finish with Icon logo on front & back. Easy screw-on and secure lid. Size: 2.9" (7.3cm) diameter x 9.8" (25cm) tall (including cap) x 26oz (750ml) volume.

SIZE: ONE SIZE **PART #: 2864415**
US: \$16.99 **CAN: \$22.99**



Indian Motorcycle® Travel Mug

AVAILABLE FOR DELIVERY NOW

Start your day with this stainless steel thermal mug with plastic liner and take the spirit of the road with you on your daily commute. Easy screw-on and secure lid. Headdress logo and quality logo on two sides. 5.1" (13cm) wide x 7.5" (19cm) tall.

SIZE: 16oz **PART #: 2863958**
US: \$19.99 **CAN: \$26.99**



MAN CAVE, GARAGE & OUTDOOR

Indian Motorcycle® Posters

Beautiful full-color front and side views of your bike. These great images are printed on high-quality 290gsm print paper measuring 24" (61cm) wide x 18" (45.7cm) tall, and the unframed print features an embossed Indian Motorcycle® logo. Each print is securely rolled in a black tube. Printed in the USA.

MADE IN
★ ★ ★ ★ ★
U.S.A
★ ★ ★ ★ ★



Scout®

AVAILABLE FOR DELIVERY NOW

SIZE: 24" x 18" PART #: 2863930
US: \$29.99 CAN: \$39.99



Dark Horse®

AVAILABLE FOR DELIVERY NOW

SIZE: 24" x 18" PART #: 2863985
US: \$29.99 CAN: \$39.99



Chief® Vintage

AVAILABLE FOR DELIVERY NOW

SIZE: 24" x 18" PART #: 2863923
US: \$29.99 CAN: \$39.99



Chieftain®

AVAILABLE FOR DELIVERY NOW

SIZE: 24" x 18" PART #: 2863924
US: \$29.99 CAN: \$39.99



Chief® Classic

AVAILABLE FOR DELIVERY NOW

SIZE: 24" x 18" PART #: 2863922
US: \$29.99 CAN: \$39.99



Roadmaster®

AVAILABLE FOR DELIVERY NOW

SIZE: 24" x 18" PART #: 2863931
US: \$29.99 CAN: \$39.99



American Icon Corrugated Sign

AVAILABLE FOR DELIVERY NOW

This oversized corrugated metal sign will be an iconic piece in your collection. Featuring the American icon logo with antique brass overall print. UV & rust resistant. Suitable for indoor and outdoor. Size: 33" (83cm) wide x 28" (70cm) tall.

SIZE: 33" x 28" PART #: 2863976
US: \$99.99 CAN: \$129.99



Icon Barrel Sign

AVAILABLE FOR DELIVERY NOW

This oversized barrel sign is made of 100% pine wood and will be an iconic piece in your bar. Diameter: 23.6" (60cm).

SIZE: 23.6" DIA. PART #: 2863990
US: \$99.99 CAN: \$129.99



First Motorcycle Sign

AVAILABLE FOR DELIVERY NOW

Vintage inspired, this is an iconic sign with embossed effect on the logo. 15.7" (40cm) wide x 11.8" (30cm) tall.

SIZE: 15.7" W x 11.8" H PART #: 2864420
US: \$12.99 CAN: \$17.99



1914 Engine Sign

AVAILABLE FOR DELIVERY NOW

Fancy the sophisticated industrial drawings derived from the past? This 1914 Engine sign features the embossed effect on the engine. 11.8" (30cm) wide x 15.7" (40cm) tall.

SIZE: 11.8" W x 15.7" H PART #: 2864423
US: \$12.99 CAN: \$17.99

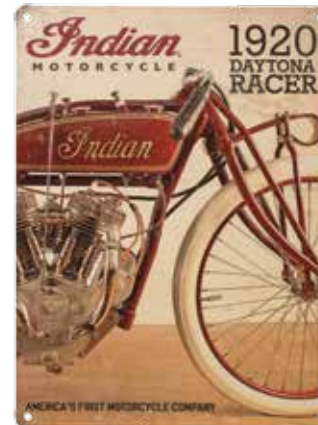


Genuine Parts & Accessories Sign

AVAILABLE FOR DELIVERY NOW

Add this Genuine Parts & Accessories metal sign featuring the embossed headress logo into your collection. 15.7" (40cm) wide x 11.8" (30cm) tall.

SIZE: 15.7" W x 11.8" H PART #: 2864421
US: \$12.99 CAN: \$17.99



1920 Daytona Racer Sign

AVAILABLE FOR DELIVERY NOW

This 1920 Daytona Racer metal sign will definitely arise your good old memories with its white rubber tires. 11.8" (30cm) wide x 15.7" (40cm) tall.

SIZE: 11.8" W x 15.7" H PART #: 2864424
US: \$12.99 CAN: \$17.99

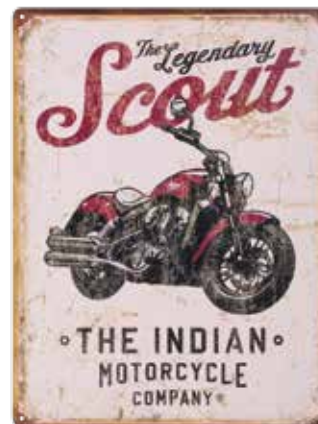


Scout® 45 Sign

AVAILABLE FOR DELIVERY NOW

Go back to history with this Indian® Scout® 45 metal sign-The Police Special. "Motorcycling is the quickest transportation on the earth." 15.7" (40cm) wide x 11.8" (30cm) tall.

SIZE: 15.7" W x 11.8" H PART #: 2864422
US: \$12.99 CAN: \$17.99



Scout® Motorcycle Sign

AVAILABLE FOR DELIVERY NOW

Add this beautiful sign to your metal sign collection. Features the Indian Scout® in vintage graphics. 11.8" (30cm) wide x 15.7" (40cm) tall.

SIZE: 11.8" W x 15.7" H PART #: 2863975
US: \$12.99 CAN: \$17.99



Antique Sign

AVAILABLE FOR DELIVERY NOW

Own a piece of historical Indian Motorcycle® marketing drawing with this Antique metal sign. 15.7" (40cm) wide x 11.8" (30cm) tall.

SIZE: 15.7" W x 11.8" H PART #: 2864425
US: \$12.99 CAN: \$17.99



Motorcycle Oil Sign

AVAILABLE FOR DELIVERY NOW

Add this beautiful Motorcycle Oil Sign to your metal sign collection. Features the Indian Motorcycle® oil can design. 11.8" (30cm) wide x 15.7" (40cm) tall.

SIZE: 11.8" W x 15.7" H PART #: 2863974
US: \$12.99 CAN: \$17.99

MAN CAVE, GARAGE & OUTDOOR



Home Rug

AVAILABLE FOR DELIVERY NOW

Featuring the icon and headdress logos, this home rug will complete the total look of your man cave. Size: 76.8" (195cm) x 116.2" (295cm).

SIZE: ONE SIZE PART #: 2864417
 US: \$299.99 CAN: \$389.99



Cushion Original

AVAILABLE FOR DELIVERY NOW

Made of 100% cotton canvas, this is a removable cushion cover with YKK® zipper closure. Cushion filling made of 100% high quality duck feather which provides maximum comfort on your couch. Both are machine washable. Size: 19.7" (50cm) x 19.7" (50cm).

SIZE: ONE SIZE PART #: 2863988
 US: \$49.99 CAN: \$67.99



Wool Throw

AVAILABLE FOR DELIVERY NOW

This high quality, hardy and timeless woollen throw with iconic headdress logo will provide you with the comfort and warmth you need. Machine washable. Made in USA. Size: 80" (203cm) x 50" (127cm).

SIZE: ONE SIZE PART #: 2864414
 US: \$249.99 CAN: \$324.99

MADE IN
 ★ ★ ★ ★ ★
U.S.A.
 ★ ★ ★ ★ ★



Speedometer Wall Clock

AVAILABLE FOR DELIVERY NOW

Design inspiration derived from the speedometer of Indian Motorcycles®. This matte black framed wall clock features speedometer graphics which deliver precise and accurate time. Diameter: 12" (30.4cm). Depth: 2.4" (6cm).

SIZE: 12" Dia. PART #: 2863992
 US: \$49.99 CAN: \$67.99





Logo Bike Mat

AVAILABLE FOR DELIVERY NOW

This heavy-duty garage mat provides a clean, stylish surface on which motorcycles can be parked or a rider can kneel while doing maintenance, and a protective surface parts can be placed on during cleaning and maintenance. Mat is 103.9" (264cm) x 52.4" (133cm).

SIZE: ONE SIZE PART #: 2863879
US: \$219.99 CAN: \$284.99



STANDARD TOP CHEST

ROLLER CABINET

Indian Motorcycle® Standard Top Chest & Roller Cabinet

AVAILABLE FOR DELIVERY NOW

Heavy-duty steel construction and high-gloss, black powder coat finish. Smooth operating ball bearing glides. Full-width, polished aluminum drawer pulls. Attractive chrome trim for a professional, finished appearance. Secure, tubular coded key locking system keeps tools safe. Iconic Ride cabinets feature 1947 Chief® image (Roller Cabinet only).

Indian Motorcycle® Standard Top Chest

PART #:	ITEM:	US:	CAN:
2830452	26" - 7 Drawer (shown)	\$499.99	\$599.99
2830454	41" - 8 Drawer (shown)	\$699.99	\$839.99

Indian Motorcycle® Roller Cabinet

PART #:	ITEM:	US:	CAN:
2830453	26" - 5 Drawer	\$599.99	\$699.99
2830455	41" - 11 Drawer	\$999.99	\$1,199.99
2830457	26" - 5 Drawer Iconic Ride (shown)	\$649.99	\$779.99
2830460	41" - 11 Drawer Iconic Ride (shown)	\$1,149.99	\$1,379.99



Indian Motorcycle® 3 Position Garage Creeper

AVAILABLE FOR DELIVERY NOW

Sturdy steel frame construction. Maximum 450 lb. working capacity. Easy-to-use snap locks secure creeper in three working positions. Ultra-low flat position is up to 2" lower than other creepers. Six full-bearing, oil-resistant, non-marking, solid PVC casters.

SIZE: ONE SIZE PART #: 2830456
US: \$169.99 CAN: \$209.99

Indian Motorcycle® Magnetic Parts Tray

AVAILABLE FOR DELIVERY NOW

Keeps nuts, bolts, fasteners and small tools within easy reach. Magnetic bottom sticks to any ferrous metal surface. Non-marring rubber covered base is safe on finished surfaces. Polished stainless steel won't rust, providing a long lasting finish.



SIZE: 4.25" Dia. PART #: 2830433
US: \$4.99 CAN: \$5.99

AUTO ACCESSORIES



Window Decal - Large

AVAILABLE FOR DELIVERY NOW

Can trim to fit different sizes of rear truck window. Monogram logo background with headdress logo in the middle. Transparent from the inside of the truck, opaque outside. 66" (168cm) wide x 29" (74cm) tall.

SIZE: ONE SIZE **PART #: 2863952**
US: \$79.99 **CAN: \$104.99**



Script Decal White

AVAILABLE FOR DELIVERY NOW

You can decorate the rear window of your vehicle with this Indian Motorcycle® decal. 2 decals per pack. 5.5" (14cm) wide x 2" (5cm) tall.

SIZE: ONE SIZE **PART #: 2863955**
US: \$12.99 **CAN: \$17.99**



Windshield Decal

AVAILABLE FOR DELIVERY NOW

Promote your Indian Motorcycle® spirit using this functional windshield decal at the front of your vehicle. 40.6" (103cm) wide x 3.3" (8.3cm) tall.

SIZE: ONE SIZE **PART #: 2863956**
US: \$14.99 **CAN: \$19.99**



Double Side Static Cling Decal

AVAILABLE FOR DELIVERY NOW

This new double side static cling decal allows you to show off your preferred brand both inside and outside your vehicle. 5.9" (15cm) wide x 7.9" (20cm) tall.

SIZE: ONE SIZE **PART #: 2863977**
US: \$9.99 **CAN: \$14.99**



Classic Emblem Decal

AVAILABLE FOR DELIVERY NOW

Show off your Indian Motorcycle® spirit with icon logo on your vehicle window. 5.9" (15cm) wide x 7.9" (20cm) tall.

SIZE: ONE SIZE **PART #: 2863953**
US: \$9.99 **CAN: \$14.99**



Static Cling Decal

AVAILABLE FOR DELIVERY NOW

Show off your Indian Motorcycle® spirit with the headdress & script logos on your vehicle window. 5.9" (15cm) wide x 7.9" (20cm) tall.

SIZE: ONE SIZE **PART #: 2863954**
US: \$9.99 **CAN: \$14.99**



Car Air Freshener

AVAILABLE FOR DELIVERY NOW

Give the air a fragrant hint of Green Apple by hanging this 3" (7.5cm) wide air freshener in a vehicle, or other enclosed space. Each air freshener features the Indian Motorcycle® logo and has a string for hanging. Sold in packs of three air fresheners. Scent lasts 2-4 weeks.

SIZE: 3 PACK **PART #: 2863921**
US: \$5.99 **CAN: \$8.99**



Highway Half Helmet
 Page 30

Waxed Jacket
 Page 14

GIFTS & COLLECTIBLES



Leather Snap Cuff

AVAILABLE FOR DELIVERY NOW

Unisex fit, snap cuff featuring embossed logo. Adjustable wrist circumference with snap buttons. 1.8" (4.5cm) tall x 7-9" (18-23cm) circumference.

SIZE: ONE SIZE PART #: 2863944
US: \$19.99 CAN: \$26.99



Leather Buckle Cuff

AVAILABLE FOR DELIVERY NOW

A must have item for your rider style. Chunky and quality leather cuff with adjustable leather straps. 2.8" (7cm) tall x 7-10.6" (18-27cm) circumference.

SIZE: ONE SIZE PART #: 2863945
US: \$29.99 CAN: \$39.99



Brown Icon Hair Elastic

AVAILABLE FOR DELIVERY NOW

Tie your hair before you ride with this 100% leather Brown Icon Logo Hair Elastic. 2.4" (6cm) wide.

SIZE: 2.4" WIDE PART #: 2863980
US: \$9.99 CAN: \$14.99



Brown Script Hair Elastic

AVAILABLE FOR DELIVERY NOW

Tie your hair before you ride with this 100% leather Brown Script Logo Hair Elastic. 2.4" (6cm) wide.

SIZE: 2.4" WIDE PART #: 2863957
US: \$9.99 CAN: \$14.99



Black Script Hair Elastic

AVAILABLE FOR DELIVERY NOW

Tie your hair before you ride with this 100% leather Black Script Logo Hair Elastic. 2.4" (6cm) wide.

SIZE: 2.4" WIDE PART #: 2863979
US: \$9.99 CAN: \$14.99



Indian Sport Scout® 1:12 Scale

AVAILABLE FOR DELIVERY NOW

Display the Indian Sport Scout® as a great conversation starter or reminder of the early days. Perfect for your desk or mantle.

SIZE: 1:12 SCALE PART #: 2863683
US: \$19.99 CAN: \$26.99



Ballpoint Pen - Black

AVAILABLE FOR DELIVERY NOW

High quality ballpoint pen with design details driven from the features of an Indian Motorcycle® engine. Each ballpoint pen comes with one black genuine Parker brand ink refill. Team with the other Indian Motorcycle® stationery products. Size: 5.5" (14cm).

SIZE: 5.5" PART #: 2863995
US: \$29.99 CAN: \$39.99

GIFTS & COLLECTIBLES



Men's Reversible Belt

AVAILABLE FOR DELIVERY NOW

This Reversible Belt delivers outstanding versatility as it can be worn as a black or brown leather belt.

SIZE: S-2XL PART #: 2863871
US: \$59.99 CAN: \$79.99



IMC Leather Textile Belt

AVAILABLE FOR DELIVERY NOW

This leather textile belt is perfect for daily outings. Match with Indian Motorcycle® casualwear.

SIZE: S-2XL PART #: 2863972
US: \$39.99 CAN: \$54.99



IMC Belt Strap For Buckle

AVAILABLE FOR DELIVERY NOW

This handsome brown full-grain leather belt has an embossed Indian Motorcycle® logo across the back and branded buckle snaps.

SIZE: S-2XL PART #: 2863971
US: \$29.99 CAN: \$39.99



Emblem Belt Buckle

AVAILABLE FOR DELIVERY NOW

This high-quality metal buckle features the Indian Motorcycle® emblem logo and is ready to use on any leather belt (not included). Buckle is 4" wide (10.2cm).

SIZE: 4" WIDE PART #: 2862296
US: \$19.99 CAN: \$26.99



Men's Circle Buckle

AVAILABLE FOR DELIVERY NOW

This premium brass Circle Buckle features a multi-colored, enamel Indian Motorcycle® logo, and is ready for use with any leather belt (not included). Buckle diameter is 3.3" (8.5cm).

SIZE: 3.3" WIDE PART #: 2863822
US: \$24.99 CAN: \$32.99



Men's Established Buckle

AVAILABLE FOR DELIVERY NOW

This Established Belt Buckle features premium antique silver finish and it has a raised antique finish Indian Motorcycle® logo and "Established 1901" on the front. The buckle is ready for use with any leather belt (not included). Buckle width is 3.93" (10cm).

SIZE: 3.93" WIDE PART #: 2863823
US: \$24.99 CAN: \$32.99





Key Fob, Metal

AVAILABLE FOR DELIVERY NOW

This handsome 100% metal alloy headdress logo key fob has a bottle opener and key ring. 3.1" (8cm) wide.

SIZE: ONE SIZE PART #: 2863336
US: \$19.99 CAN: \$26.99



IMC Rubber Key Ring

AVAILABLE FOR DELIVERY NOW

Retro motif IMC logo rubber key ring. Made with specialized machinery for defined cut out details on logo. 2.6" (6.5cm) wide x 3.9" (10cm) tall.

SIZE: ONE SIZE PART #: 2863981
US: \$12.99 CAN: \$17.99



Headdress Rubber Key Ring

AVAILABLE FOR DELIVERY NOW

Iconic headdress rubber key ring. Made with specialized machinery for defined cut out details on logo. 1.2" (3cm) wide x 4.7" (12cm) tall.

SIZE: ONE SIZE PART #: 2863982
US: \$12.99 CAN: \$17.99



Scout® Leather Key Ring

AVAILABLE FOR DELIVERY NOW

Functional key ring can be held in hand or hooked over belt to keep your keys safe. Embossed logo on both sides. 1.4" (3.5cm) wide x 5.1" (13cm) tall.

SIZE: ONE SIZE PART #: 2863969
US: \$15.99 CAN: \$21.99



Icon Leather Key Ring

AVAILABLE FOR DELIVERY NOW

Quality key ring featuring the embossed icon logo on both sides. Made with a special leather work technique. 2.2" (5.5cm) wide x 3.5" (9cm) tall.

SIZE: ONE SIZE PART #: 2863965
US: \$19.99 CAN: \$26.99



Script Leather Key Ring

AVAILABLE FOR DELIVERY NOW

Keep your keys safe with this modern key ring with script logo embossed on both sides. 1.2" (3cm) wide x 4.7" (12cm) tall.

SIZE: ONE SIZE PART #: 2863926
US: \$15.99 CAN: \$21.99



Indian Motorcycle® Logo Pin Badge

AVAILABLE FOR DELIVERY NOW

SIZE: 1.2" PART #: 2863673
US: \$5.99 CAN: \$8.99



Indian Motorcycle® Circle Icon Pin Badge

AVAILABLE FOR DELIVERY NOW

SIZE: 1" PART #: 2863674
US: \$5.99 CAN: \$8.99



Indian Motorcycle® Colored Headdress Pin Badge

AVAILABLE FOR DELIVERY NOW

SIZE: 1.6" PART #: 2863675
US: \$5.99 CAN: \$8.99



Indian Motorcycle® Brown Headdress Pin Badge

AVAILABLE FOR DELIVERY NOW

SIZE: 1.6" PART #: 2863676
US: \$5.99 CAN: \$8.99

LICENSED PRODUCTS

KING BABY® STUDIO JEWELRY RANGE

The Indian® by King Baby® jewelry line has been developed for bikers and motorcycle enthusiasts alike. The collection features sterling silver bracelets, pendants, rings, wallet chains, money clips, belt buckles, and key rings. King Baby® is world renowned for creating some of the most unique, highly-detailed, and most sought after premium jewelry collections. The Indian® by King Baby® line is styled with the original aesthetic of Indian Motorcycle® and handcrafted in the USA with King Baby® quality and artistry. To order please contact King Baby® directly:

Ben Binder (Ben@kingbaby.com) or Landon Ludvigson (Landon@kingbaby.com)
KING BABY STUDIO
1621 12th street | Santa Monica, CA 90404
Phone: 310-828-4438

View the collection at: kingbabystudio.com/collections/indian





Headdress Logo Hat
Page 66

IMC Contrast Zip Thru
Page 49

PATCHES & STICKERS



NEW
Scout® Sixty Patch
 AVAILABLE FOR DELIVERY IN JUNE

SIZE: 4.5" PART #: 2867610
 US: \$6.99 CAN: \$10.49



NEW
Chief Dark Horse® Patch
 AVAILABLE FOR DELIVERY IN JUNE

SIZE: 4.5" PART #: 2867611
 US: \$6.99 CAN: \$10.49



NEW
Chief® Classic Patch
 AVAILABLE FOR DELIVERY IN JUNE

SIZE: 4.5" PART #: 2867612
 US: \$6.99 CAN: \$10.49



NEW
Chief® Vintage Patch
 AVAILABLE FOR DELIVERY IN JUNE

SIZE: 4.5" PART #: 2867613
 US: \$6.99 CAN: \$10.49



NEW
Chieftain® Patch
 AVAILABLE FOR DELIVERY IN JUNE

SIZE: 4.5" PART #: 2867614
 US: \$6.99 CAN: \$10.49



NEW
Chieftain Dark Horse® Patch
 AVAILABLE FOR DELIVERY IN JUNE

SIZE: 4.5" PART #: 2867617
 US: \$6.99 CAN: \$10.49



NEW
Indian Springfield™ Patch
 AVAILABLE FOR DELIVERY IN JUNE

SIZE: 4.5" PART #: 2867616
 US: \$6.99 CAN: \$10.49



NEW
Roadmaster® Patch
 AVAILABLE FOR DELIVERY IN JUNE

SIZE: 4.5" PART #: 2867615
 US: \$6.99 CAN: \$10.49



**Indian Motorcycle®
 Scout® Patch, Red**
 AVAILABLE FOR DELIVERY NOW

SIZE: 4.5" PART #: 2863920
 US: \$6.99 CAN: \$10.49



**Indian Motorcycle®
 Scout® Patch, Black**
 AVAILABLE FOR DELIVERY NOW

SIZE: 4.5" PART #: 2863928
 US: \$6.99 CAN: \$10.49



Circle Icon Patch
 AVAILABLE FOR DELIVERY NOW

SIZE: 3.1" PART #: 2863862
 US: \$6.99 CAN: \$10.49



Headdress Patch
 AVAILABLE FOR DELIVERY NOW

COLORED: SIZE: 4.5" PART #: 2863864
 RED: SIZE: 4.5" PART #: 2863863
 US: \$6.99 CAN: \$10.49



IMC Brown Leather Patch

AVAILABLE FOR DELIVERY NOW

SIZE: 3.94" PART #: 2863986
US: \$9.99 CAN: \$14.99



Headdress Leather Patch

AVAILABLE FOR DELIVERY NOW

SIZE: 3.35" PART #: 2863987
US: \$9.99 CAN: \$14.99



American Icon Patch

AVAILABLE FOR DELIVERY NOW

SIZE: 3.25" PART #: 2863949
US: \$9.99 CAN: \$14.99



IMC Leather Patch

AVAILABLE FOR DELIVERY NOW

SIZE: 4.5" PART #: 2863950
US: \$9.99 CAN: \$14.99



Quality Leather Patch

AVAILABLE FOR DELIVERY NOW

SIZE: 4.25" PART #: 2863951
US: \$9.99 CAN: \$14.99



**Indian Motorcycle®
Pride Patch**

AVAILABLE FOR DELIVERY NOW

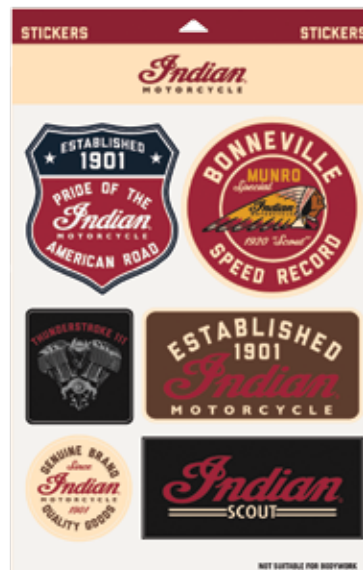
SIZE: 3.1" PART #: 2863918
US: \$8.99 CAN: \$13.49



**Indian Motorcycle®
Thunder Stroke® Patch**

AVAILABLE FOR DELIVERY NOW

SIZE: 4.1" PART #: 2863919
US: \$8.99 CAN: \$13.49



Graphic Sticker Set

AVAILABLE FOR DELIVERY NOW

Brand everything from tool chests to laptops to car windows with graphics from your favorite motorcycle brand. Not suitable for motorcycle bodywork. 13.25" (34cm) high x 8.5" (22cm) wide.

SIZE: ONE SIZE PART #: 2863917
US: \$12.99 CAN: \$17.99



**Indian Motorcycle®
Sticker Set**

AVAILABLE FOR DELIVERY NOW

Add branding to items such as a car window, notebook, desktop, refrigerator and nearly any other surface. Not suitable for motorcycle bodywork. 13.25" (34cm) high x 8.5" (22cm) wide.

SIZE: ONE SIZE PART #: 2863865
US: \$12.99 CAN: \$17.99



Logo Patch

AVAILABLE FOR DELIVERY NOW

SIZE: 4.3" PART #: 2863861
US: \$6.99 CAN: \$10.49

INDIAN[®] BOOK

INDIAN[®] BOOK

Indian Motorcycle[®] - America's First Motorcycle Company[®] tells the story of the brand from its birth to the present day, following the purchase of Indian Motorcycle[®] by Polaris Industries[®] in 2011. This book includes exclusive content and information from members of the Indian Motorcycle[®] management, team providing valuable insight into the development of the new era of motorcycles and the rebirth of the brand.

This special collectors edition is available exclusively from Indian Motorcycle[®] dealers and indianmotorcycle.com.



Indian[®] Book - Collectors Edition

AVAILABLE FOR DELIVERY NOW

This large format special collectors edition includes a premium 'clam-shell' display box, exclusive brown leather feel cover and a double sided poster.

SIZE: ONE SIZE PART #: 2863968
US: \$109.99 CAN: \$144.99



POLISHES



No Rinse Wash & Shine

AVAILABLE FOR DELIVERY NOW

This is the fastest, easiest, and most environmentally friendly way to conveniently wash a motorcycle without rinsing. It cleans and protects the bodywork as it bonds to the surfaces and traps dirt to clean without rinsing.

SIZE:	PART #:	US:	CAN:
16 OZ/ 12PK	2863892	\$191.88	\$263.88
1 GAL/ 2PK	2863899	\$99.98	\$135.98



Instant Detailer & Shine

AVAILABLE FOR DELIVERY NOW

Detail in minutes with Instant Detailer and Shine. Spray it on a microfiber towel or directly on the bike to remove dirt and bugs. Use on windshields, bodywork and chrome. Safe for use on plexiglas, lexan, acrylic, or factory coated windshields.

SIZE:	PART #:	US:	CAN:
16 OZ/ 12PK	2863893	\$191.88	\$263.88
1 GAL/ 2PK	2863900	\$99.98	\$135.98



Engine Enhancer

AVAILABLE FOR DELIVERY NOW

Engine Enhancer is specially designed to preserve and restore the beauty of an engine and related parts. It provides a durable, factory finish without greasy or oily residue.

SIZE:	PART #:	US:	CAN:
16 OZ/ 12PK	2863894	\$191.88	\$263.88
1 GAL/ 2PK	2863901	\$99.98	\$135.98



White Wall & Wheel Cleaner

AVAILABLE FOR DELIVERY NOW

This non-corrosive cleaner will safely dissolve and remove grease, oil, road dirt, and brake dust from motorcycle tires and wheels. It is excellent for use on white wall tires, and is a biodegradable cleaner that is safe for all wheels, such as chrome, aluminum, clear or powder-coated wheels.

SIZE:	PART #:	US:	CAN:
16 OZ/ 12PK	2863895	\$191.88	\$263.88
1 GAL/ 2PK	2863902	\$99.98	\$135.98



Spray Wax & Protectant

AVAILABLE FOR DELIVERY NOW

Spray Wax and Protectant can be used on any clean surface, wet or dry, and it will produce a durable, high-gloss shine with minimal effort. It contains no petroleum distillates or silicone.

SIZE:	PART #:	US:	CAN:
16 OZ/ 12PK	2863896	\$191.88	\$263.88
1 GAL/ 2PK	2863903	\$99.98	\$135.98



Super Plush M/F Towel-Twin Pack

AVAILABLE FOR DELIVERY NOW

The only towels a rider should use on a motorcycle, these 100% microfiber towels won't scratch any surface. They are extremely plush, can be used with chemicals and cleaners, and are machine washable. Sold in packs of two towels.

SIZE:	PART #:	US:	CAN:
TWIN PK/ 24PK	2863897	\$287.76	\$407.76



Travel Packs

AVAILABLE FOR DELIVERY NOW

A rider can keep an Indian Motorcycle® looking great while traveling by carrying this Travel Pack. It includes 4 oz. bottles of Bike Wash Concentrate, Spray & Wipe Instant Detailer, Liquid Spray Wax, and Leather, Vinyl & Rubber Conditioner, plus a plush microfiber towel.

SIZE:	PART #:	US:	CAN:
12PK	2863898	\$359.88	\$479.88



Legend Lives Tee
Page 40

When you're enjoying your new Indian Motorcycle®, always wear a helmet and protective eyewear and clothing and insist that your passenger do the same. Ride within the limits of the law and your own abilities. Read and understand your owner's manual. Never ride under the influence of drugs or alcohol. Indian Motorcycle® strongly recommends that all riders take a Motorcycle Safety Foundation® Rider Course. For a course near you, call 1-800-446-9227. Protect riders' rights by joining the American Motorcyclist Association. For the name of your nearest Indian Motorcycle® dealership, call 1-800-POLARIS or visit our website at IndianMotorcycle.com. All riders are professionals and on a closed course. To the best knowledge of Polaris Industries Inc., the specifications, descriptions, and illustrative material contained herein are accurate as of the date this catalog was approved for printing. Indian Motorcycle® reserves the right, without prior notice, to discontinue at any time at its discretion any of the items herein or change specifications or designs without incurring any obligation to the customer. All items are subject to availability and prior sales by our dealers. Location photography by Todd Anderson, Scott Toepfer and Dean Bradshaw. Studio Photography by SAGA Marketing. Catalog design by SAGA Marketing. Printed in the USA.

Indian
MOTORCYCLE

Indian Motorcycle
2100 Highway 55, Medina, MN 55340
Phone: 763.542.0500 | Fax: 763.542.0599

Indian Motorcycle
50 Prairie Way
Winnipeg, Manitoba Canada R2J 3J8
Phone: 204.925.7100 | Fax: 204.925.7110

©2017 Indian Motorcycle Part #: 9930354



9930354

Indian Motorcycle® is a division of Polaris Industries Inc. Unless noted, trademarks are the property of Polaris Industries Inc. 3M® is a registered trademark of 3M Corporation. Cordura® is a registered trademark of Invista North America S.A.R.L. Corp Luxembourg. Velcro® is a registered trademark of Velcro Industries B.V. Ltd Co. Netherlands. Bluetooth® is a registered trademark of Bluetooth SIG, Inc. YKK® is a registered trademark of YKK Corporation. Red Wing® and Red Wing Shoes® are registered trademarks of Red Wing Shoe Company, Inc. King Baby® is a registered trademark of MB57 Holdings, Inc. Jack Daniel's® is a registered trademark of Jack Daniel's. Vibram® is a registered trademark of Vibram S.P.A.