

LOWER CLOSEOUT KIT



P/N 2884901, 2884906

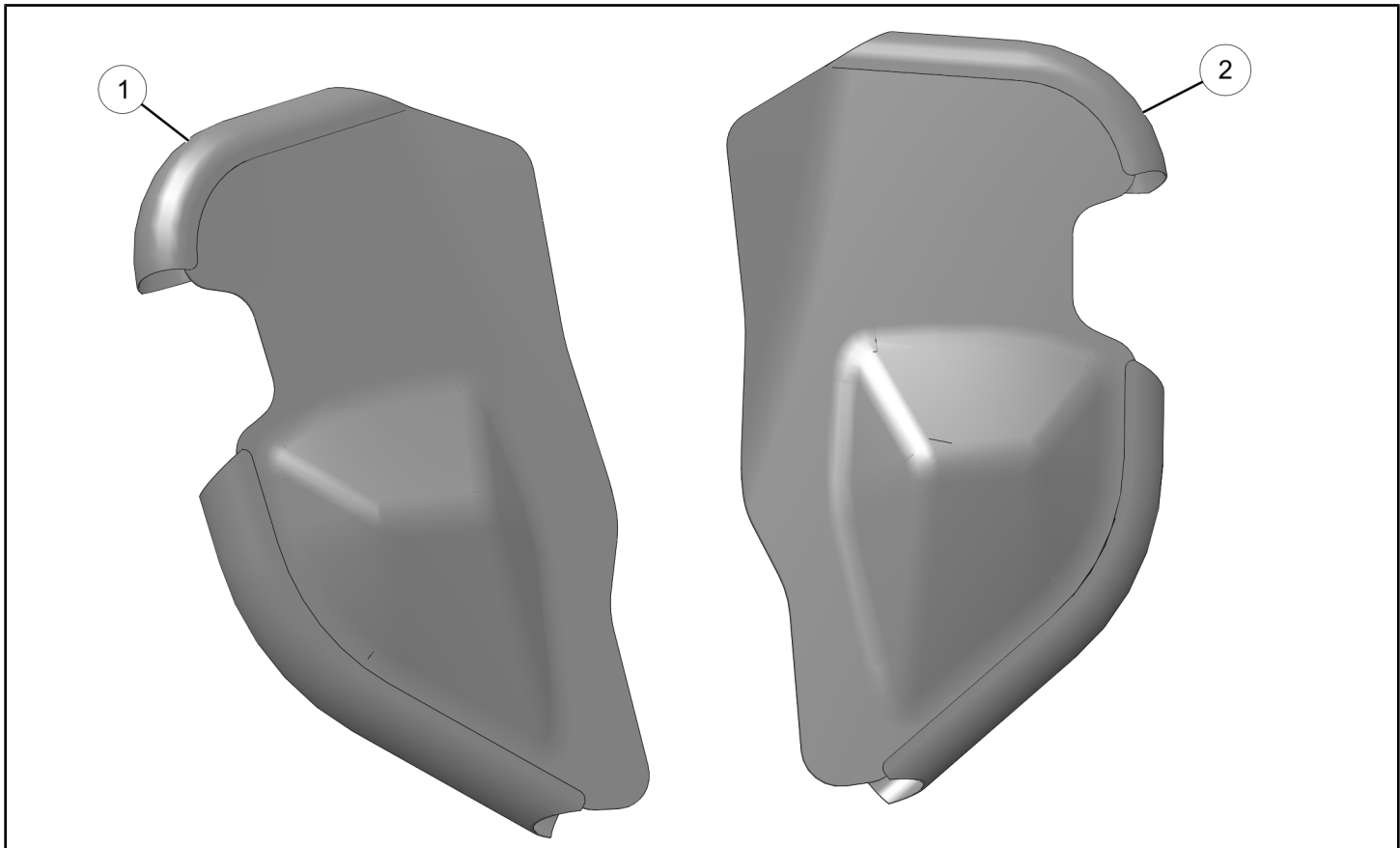
BEFORE YOU BEGIN

Read these instructions and check to be sure all parts and tools are accounted for. Please retain these installation instructions for future reference and parts ordering information.

APPLICATION

Verify accessory fitment at www.indianmotorcycle.com.

KIT CONTENTS



REF	QTY	PART DESCRIPTION	P/N AVAILABLE SEPARATELY
1	1	Closeout, Lower, RH (Kit P/N 2884901) Closeout, Lower, RH (Kit P/N 2884906)	5457550
2	1	Closeout, Lower, LH (Kit P/N 2884901) Closeout, Lower, LH (Kit P/N 2884906)	5457549

TOOLS REQUIRED

None

IMPORTANT

Your Indian Motorcycle® Lower Closeout Kit is exclusively designed for your vehicle. Please read the installation instructions thoroughly before beginning. Installation is easier if the vehicle is clean and free of debris. For your safety, and to ensure a satisfactory installation, perform all installation steps correctly in the sequence shown.

INSTALLATION INSTRUCTIONS

VEHICLE PREPARATION

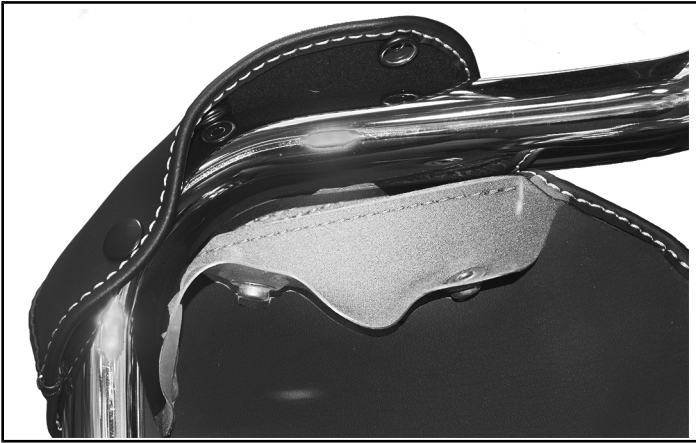
GENERAL

1. Park motorcycle on a flat surface, fully extend kickstand, and make sure vehicle is stable.
2. Turn key or ignition switch to OFF position and remove key. If equipped with keyless fob, remove fob from proximity of vehicle.

ACCESSORY INSTALLATION

Left side closeout shown. Right side similar.

1. Install closeout into place and pull upper flaps around bar.



2. Pull lower flaps around lower bar.



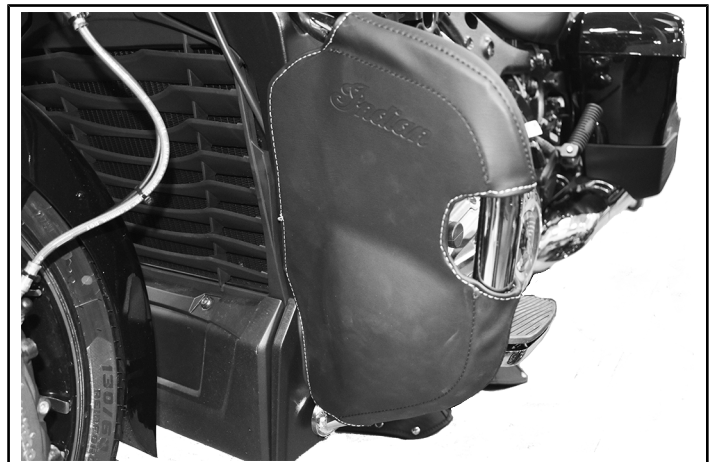
3. Snap upper snaps together.



4. Snap lower snaps together.



5. Make any adjustments to closeout so it is installed evenly on highway bar.



6. If installed, highway bar pegs should be installed to bar in opening of closeout.

7. Repeat steps for opposite side closeout.



INSTRUCTION FEEDBACK FORM

A feedback form has been created for the installer to provide any comments, questions or concerns about the installation instructions. The form is viewable on mobile devices by scanning the QR code or by clicking [HERE](#) if viewing on a PC.

