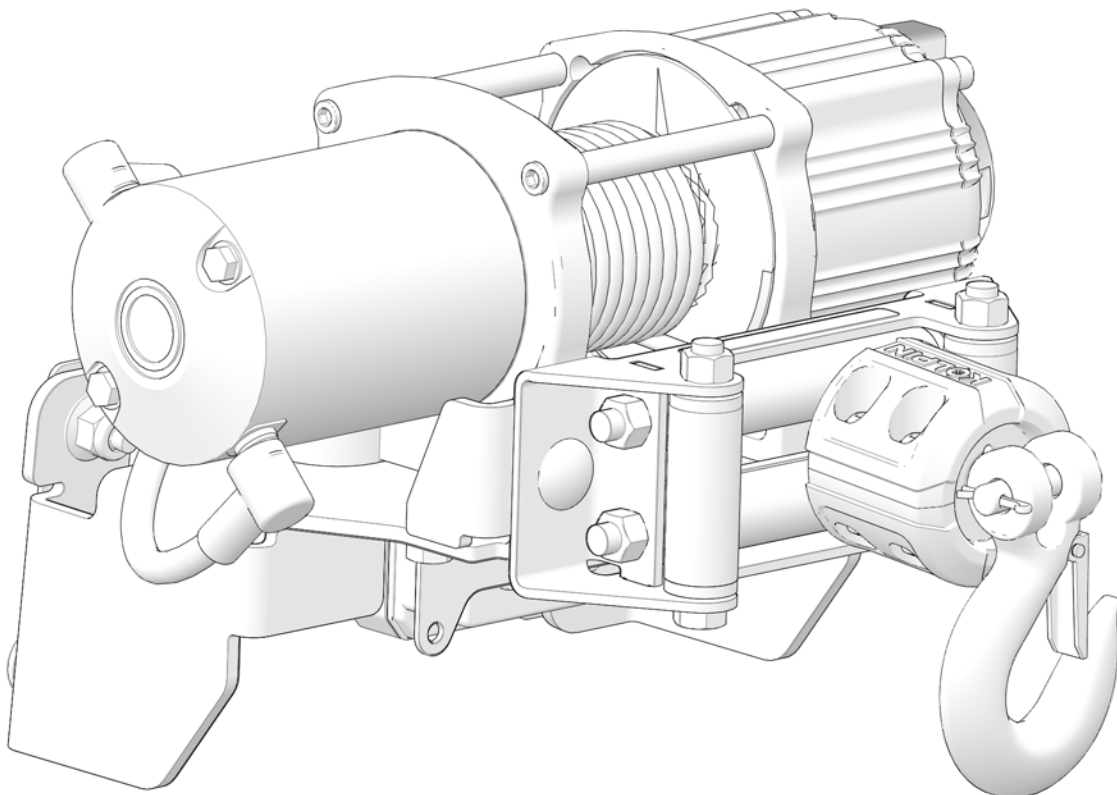


QUICK-MOUNT WINCH KIT

Assembly / Owner's Manual

**APPLICATION: Kawasaki MULE™ Pro-FX / FXT / FXR /
DX / DXT**

Verify accessory fitment at Kolpin.com



INTRO

Thank you for purchasing Kolpin engineered products. With proper installation, usage, care, and maintenance, your Kolpin product will last for years to come.

BEFORE YOU BEGIN

- Read and understand the entire installation manual, including all installation instructions, operating instructions, and safety warnings and guidelines before installing or operating your accessory. Failure to comply may result in damage to the product, damage to the vehicle, and can lead to hazards up to and including death.
- Verify all parts and tools are accounted for. If parts are missing, do not return to the store. Call us for help, **Toll Free 1-877-956- 5746**
- To ensure a satisfactory installation, follow all steps correctly and in the sequence described.
- Keep these instructions for future reference or for informational requests.
- To facilitate installation, make sure that your vehicle is clean and free of debris.
- All directions referring to right and left are when the rider is sitting on the machine.

SAFETY INFORMATION

Please read and understand all assembly instructions, notices and warnings before assembling and operating your Kolpin winch system.

Follow these guidelines to ensure satisfactory operation:

- Read this manual and your ATV/ UTV operators manual before use.
- Periodically check for wear and tightness of all fasteners. Replace or re-torque fasteners as necessary.

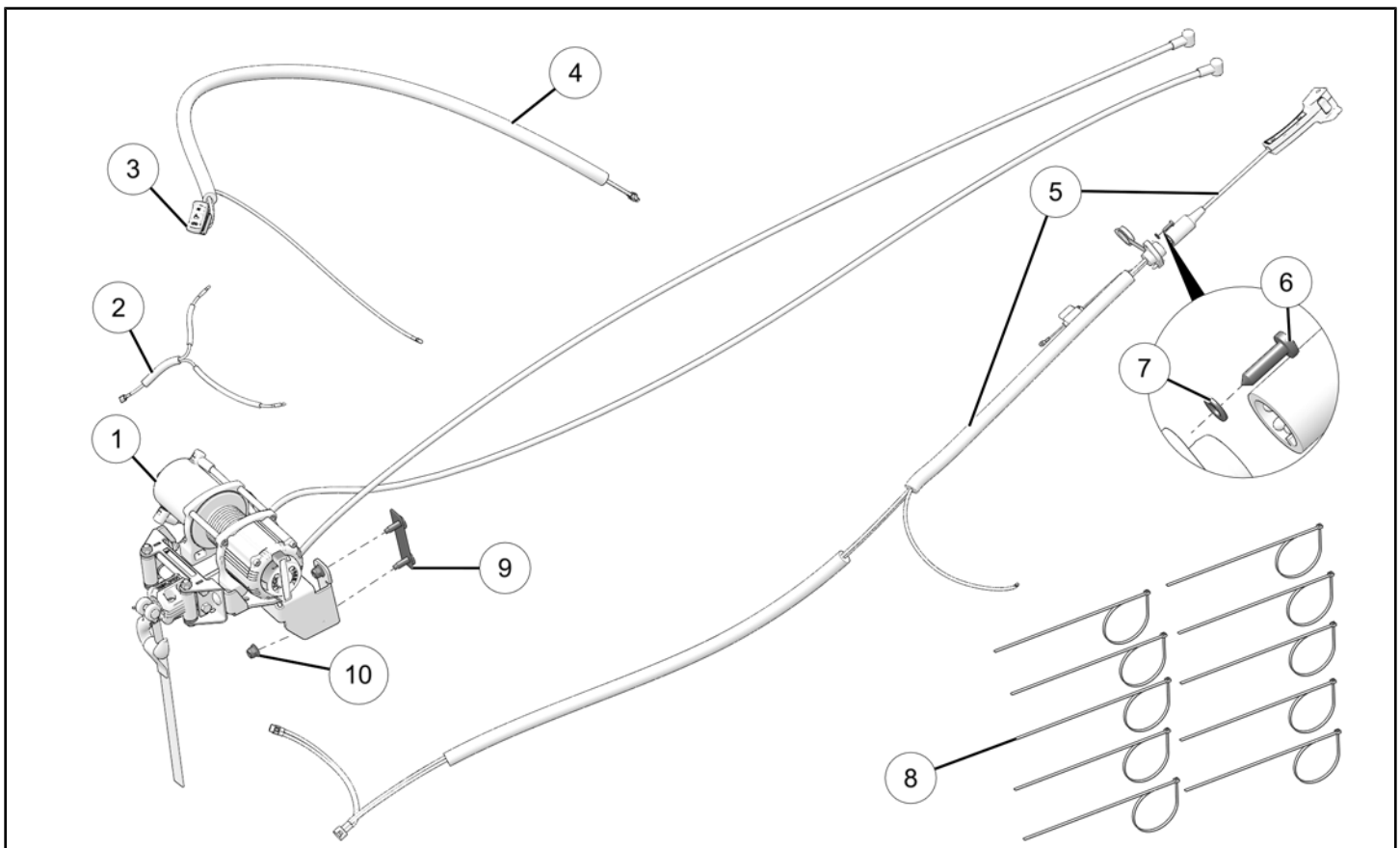
ASSEMBLY TIME

Approximately 42 minutes

TOOLS REQUIRED

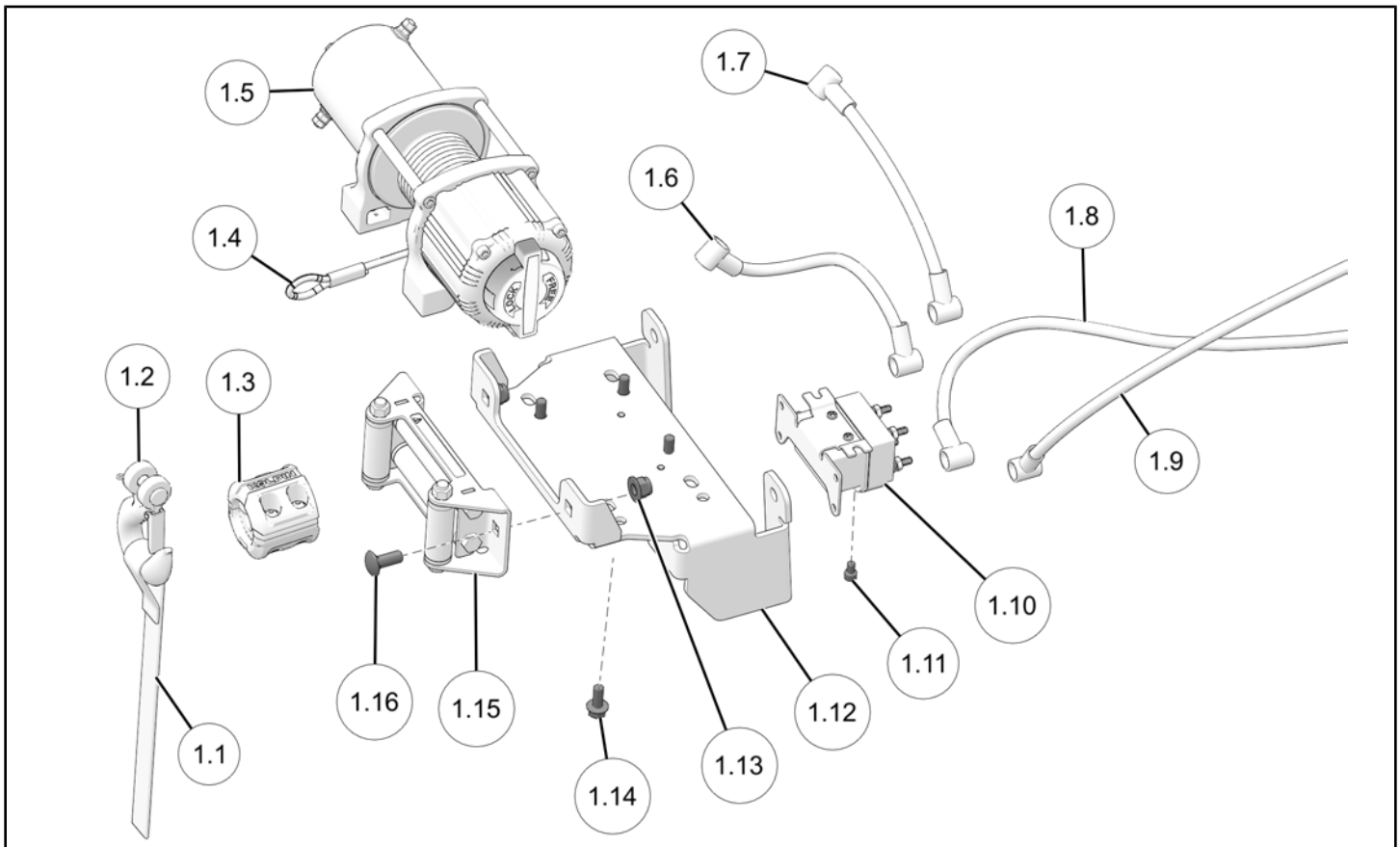
- Safety Glasses
- Cutting tool
- Drill
 - 1 in (25 mm)
 - 5/32 in (4 mm)
- Pliers
- Socket Set, Metric
- Torque Wrench
- Wrench Set, Metric

KIT CONTENTS



REF	QTY	PART DESCRIPTION	PART NUMBER
1	1	Winch Assembly – 4500 lb	n/a
2	1	3-Wire Splitter	n/a
3	1	Winch Switch	25-0700
4	1	UTV Dash Switch Harness	n/a
5	1	Remote Switch	n/a
6	2	Screw – Torx® Pan Head HI/LO, 10 x 3/4	7512026
7	2	Washer – Flat, M5	7556724
8	10	Cable Tie	7080492
9	2	Winch Bracket	n/a
10	4	Nut – Hex Flange, M10 x 1.5	7547423

WINCH DETAIL



REF	QTY	PART DESCRIPTION	PART NUMBER
1.1	1	Kolpin® Winch Strap, Orange	85071
1.2	1	Roller Hawse Hook	RPR0108
1.3	1	Winch Stop	85080
1.4	1	Kolpin® Synthetic Rope	85064
1.5	1	Winch 4500 lb	25-9450R
1.6	1	Cable – Winch, Blue 6 GA (241 mm)	n/a
1.7	1	Cable – Winch, Yellow 6 GA (241 mm)	n/a
1.8	1	Cable – Power, Red 6 GA (2184 mm)	n/a
1.9	1	Cable – Power, Black 6 GA (2197 mm)	n/a
1.10	1	Contactor	85068
1.11	2	Screw – Socket Head, M6 x 1 x 10	7517337
1.12	1	Bracket Mount, Winch	n/a
1.13	2	Nut – Hex Flange, M10 x 1.5	7547423
1.14	4	Screw – Hex Flange, M8 x 1.25 x 20	n/a
1.15	1	Fairlead Roller, Winch 4500 lb	85087
1.16	2	Screw – Round Head Carriage, M10 x 1.5 x 25	7519372

INSTALLATION INSTRUCTIONS

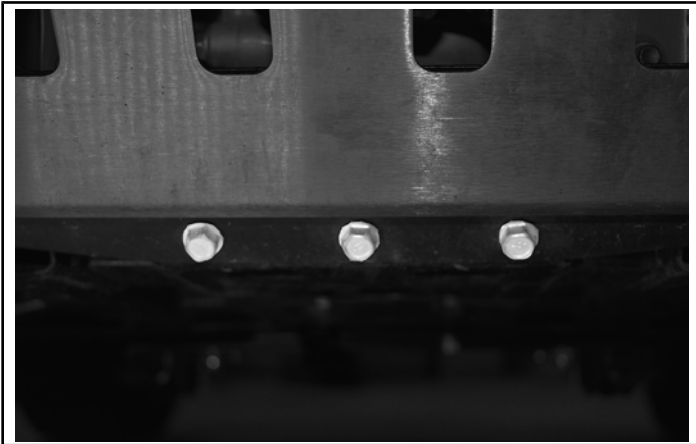
VEHICLE PREPARATION

GENERAL

1. Park vehicle on a flat surface.
2. Shift vehicle transmission to NEUTRAL and set parking brake.
3. Turn key to **OFF** position and remove key from vehicle.
4. Remove and keep one left side and one right side bumper bolt and nut.



5. Remove and keep three bottom bumper bolts. Remove and set aside bumper.

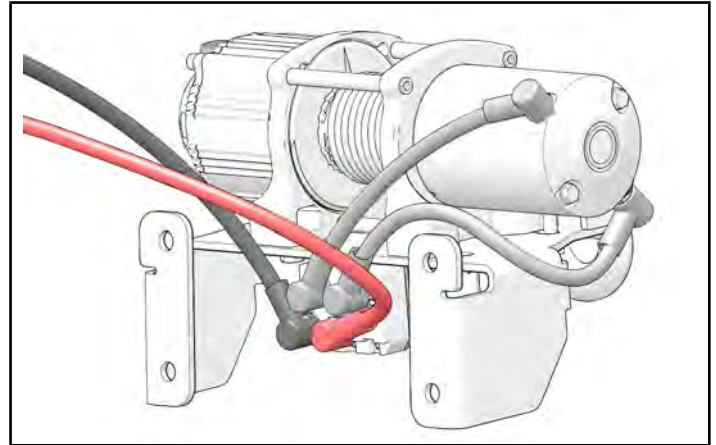


6. Remove and set aside seat.
7. Disconnect battery as shown in Owner's Manual.

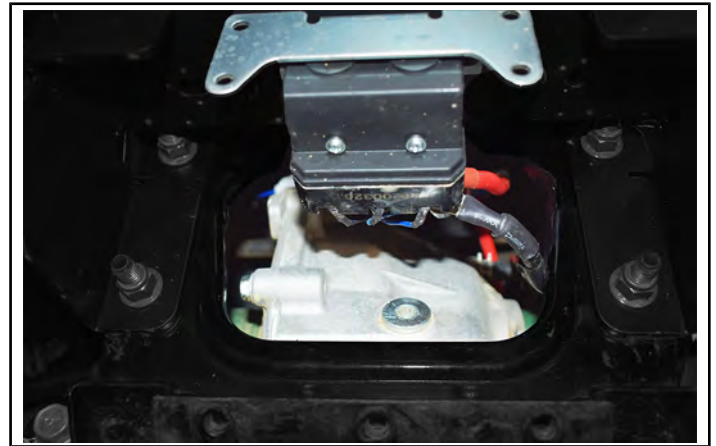
ACCESSORY INSTALLATION

WINCH INSTALLATION

1. Make sure wire routing and connections are as shown and make necessary adjustments.



2. Put red and black cables up through frame opening and over front gear case along the parking brake cable bundle.



3. Attach power cables to parking brake cable / transmission shifting cable bundle with one cable tie ⑧.



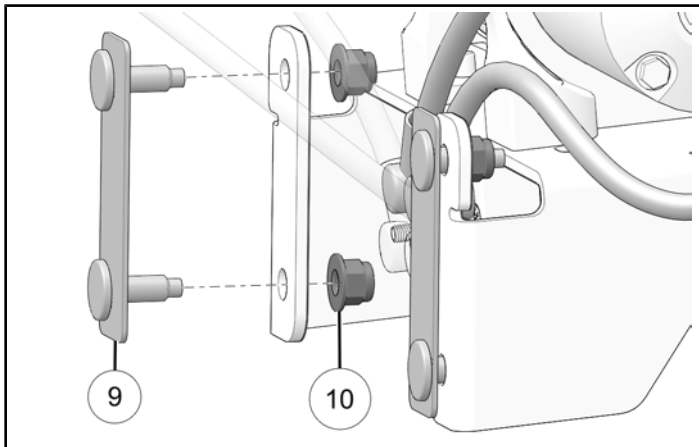
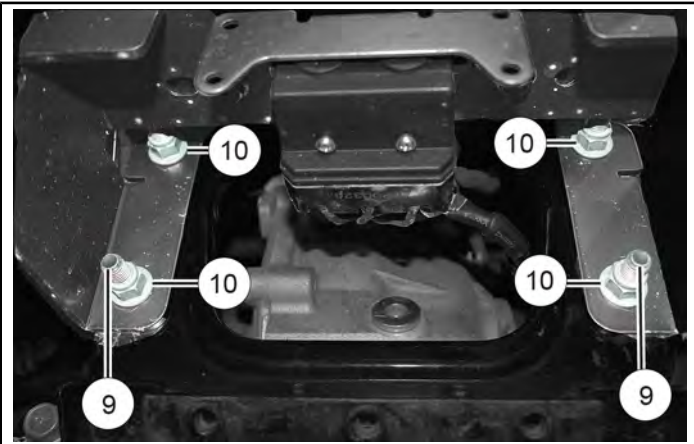
4. Put winch in position.



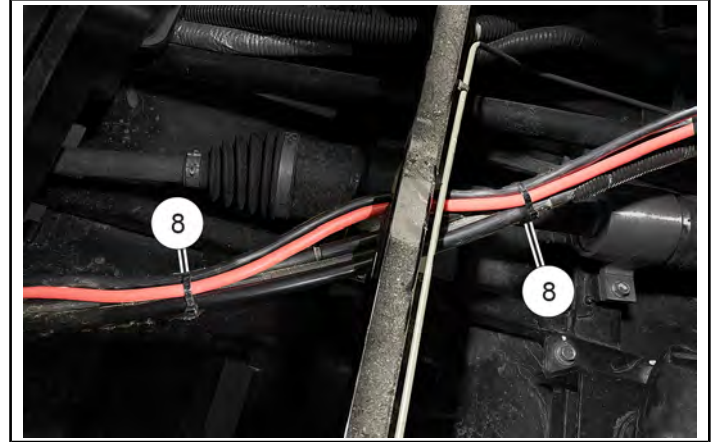
5. Install winch onto vehicle frame with two winch brackets (9) and four winch bracket nuts (10). Torque to specification.

TORQUE

Winch Bracket Nuts (10):
34 ft-lbs (46 N·m)



6. Attach winch power cables to parking brake cable / transmission shifting cable bundle with two cable ties (8).



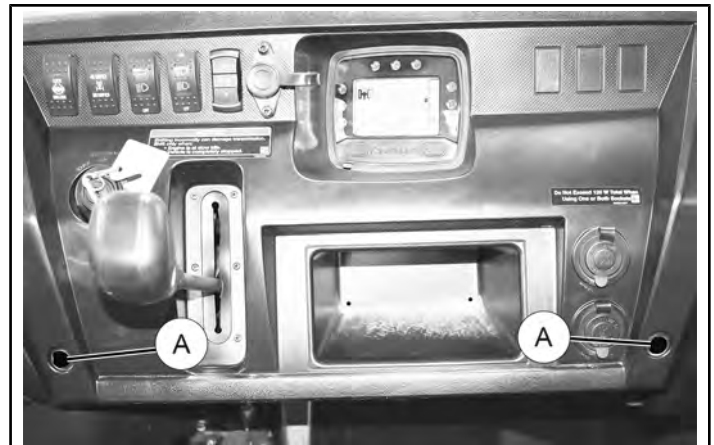
7. Put bundle of cables through hook on seat support bar.



8. Put red and black cables into battery location. Do not connect at this time.

REMOTE AND SWITCH INSTALLATION

1. Remove and keep two dash panel fasteners (A).



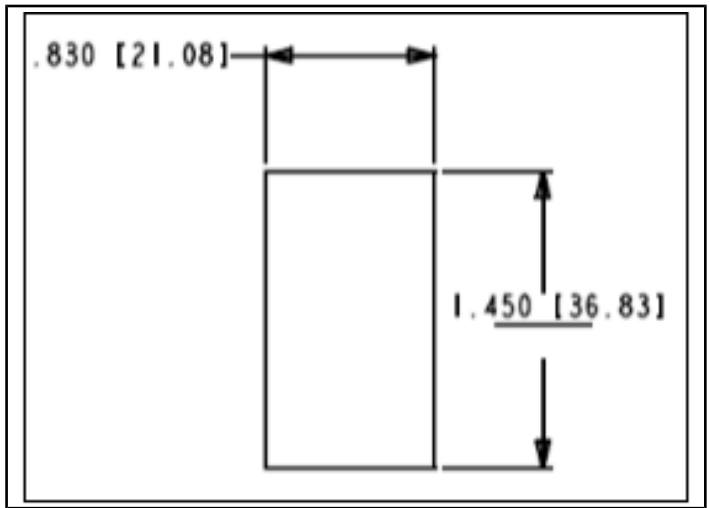
2. Remove and keep three dash panel fasteners on top of panel. Release dash panel from front dash.



3. Remove and keep two fasteners from hood access panel. Lift off hood access panel, releasing the two top tabs, and set aside.



4. Cut out blank on dash panel.



5. Install switch ③ through front of dash panel.

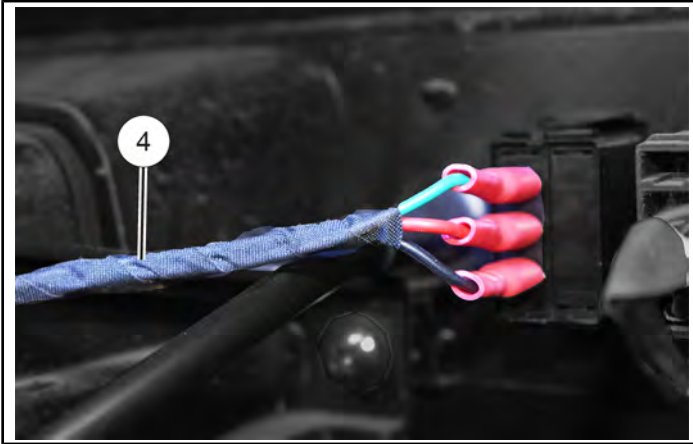


6. Connect dash harness ④ to switch.

IMPORTANT

Wires must be connected in order shown.

- Top “Out” – Green wire
- Middle – Red wire
- Bottom “In” – Black wire



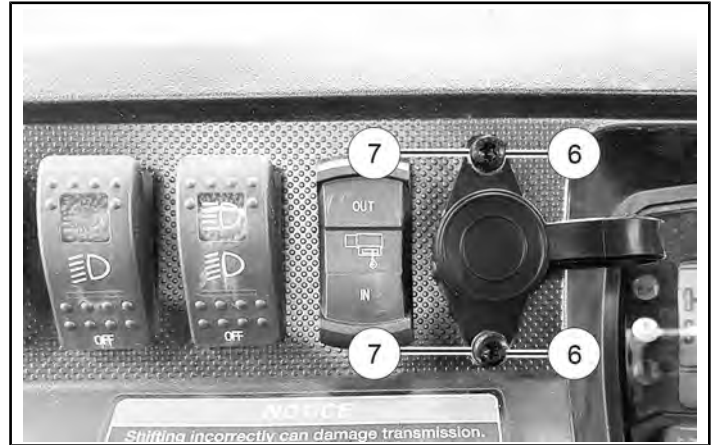
7. Drill a 1 in (25 mm) hole in dash panel.



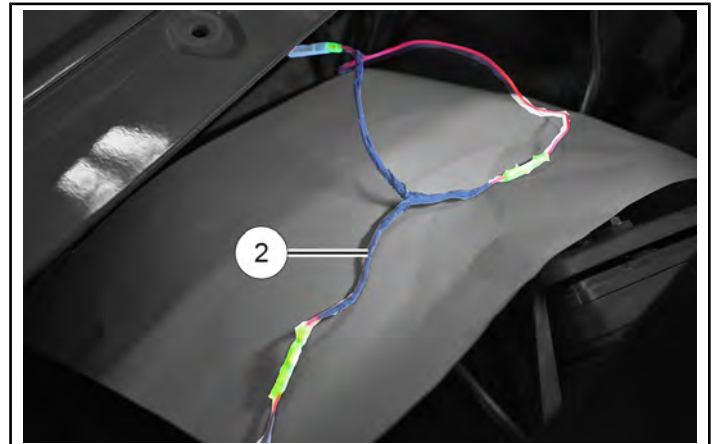
8. Install remote port into drilled hole and mark screw holes on dash panel. Remove remote port.

9. Drill two holes 5/32 in (4 mm) in dash panel.

10. Install two screws ⑥ and two washers ⑦ to attach remote to dashboard. Tighten until fully seated.

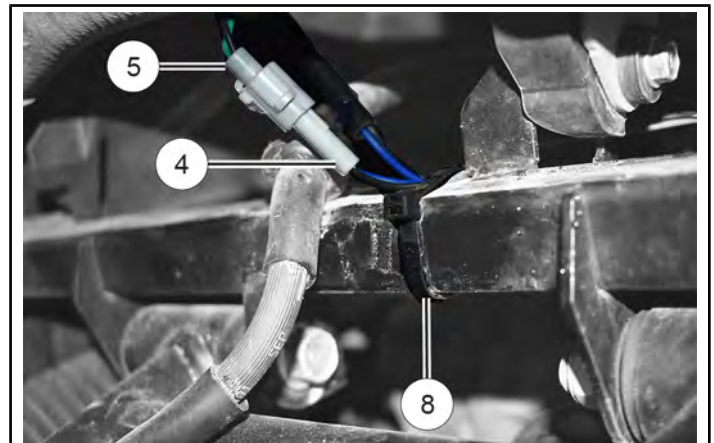


11. Connect wire splitter ② to switch harness, remote harness, and vehicle accessory harness.

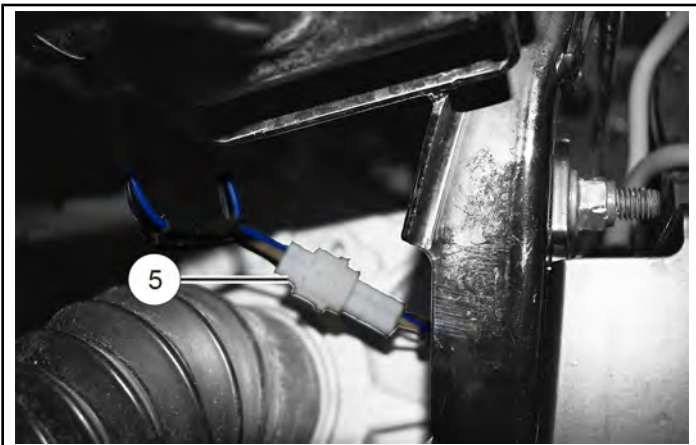


12. Put remote harness and switch harness down through vehicle by winch.

13. Connect remote harness ⑤ to switch harness ④. Attach to frame with one cable tie ⑧.



14. Connect remote harness ⑤ to winch harness.



VEHICLE REASSEMBLY

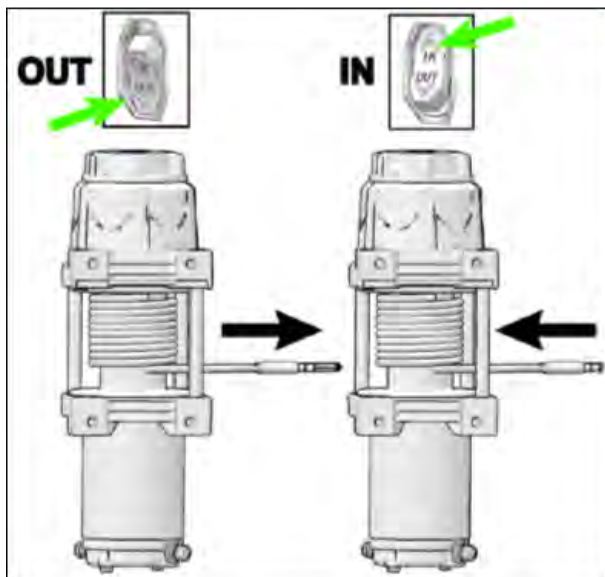
GENERAL

1. Confirm all wiring is correct and there are no exposed wires or terminals.
2. Tightly wrap all loose wires and secure away from moving parts and heat sources.

OPERATING INSTRUCTIONS

CONTROL SWITCH OPERATION

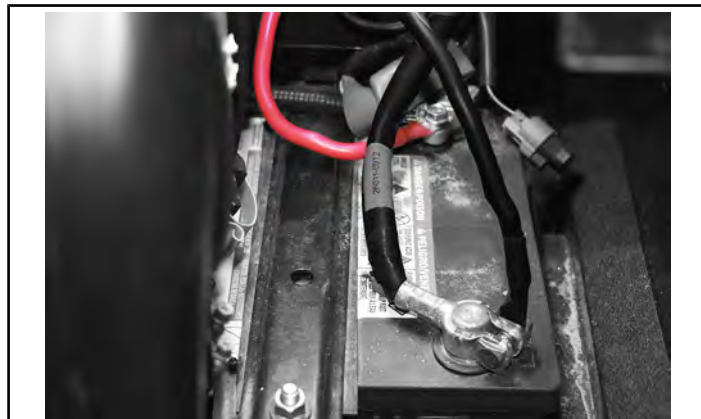
When properly installed, the control switches allow you to operate the winch while seated in the vehicle using the dash switch or remotely using the corded switch. Proper switch operation is shown.



3. Connect positive and negative battery cables as shown in Owner's Manual.

⚠ WARNING

When BOTH battery cables are disconnected ALWAYS connect AND tighten red positive (+) battery cable FIRST. Failure to comply will result in a high current electrical arc that may result in battery explosion, if tool touches grounded frame. Death or serious personal injury may occur.



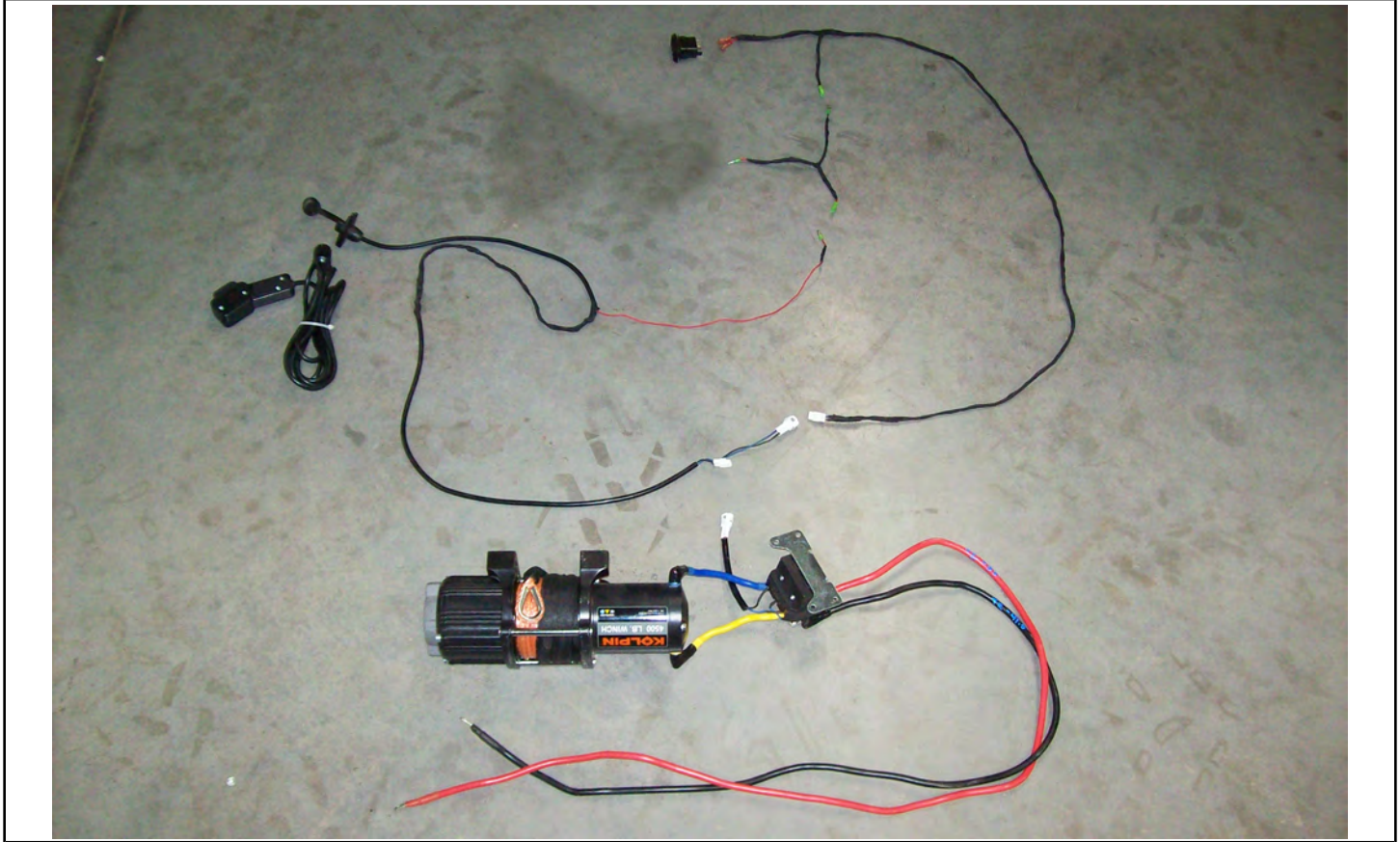
4. Install seat.
5. Install bumper with five retained bumper bolts.
6. With vehicle key in the ON position, check winch for proper operation.

TROUBLESHOOTING

SYMPTOM	POSSIBLE CAUSES	RECOMMENDED SOLUTION
Winch will not operate.	Contactors not receiving power.	Turn vehicle key ON.
	Connections between components not in proper order.	Check connections. Connect wired handlebar switch connection from vehicle main wire harness directly to contactor to make sure a direct connection will operate the winch. If connections are not in the order shown in the pictures on the last page, the whole system may not function, or only certain parts of it will function.
	Loose battery cable connections.	Tighten nuts on all cable connections.
	Keyed power circuit (orange wires) not properly powered.	Check fusebox for 10A accessory circuit. Check voltage in certain places, especially orange wires coming out of the main harness by the steering post.
	Contactors malfunctioning.	Tap contactor to loosen contacts. Apply 12 volts to coil terminals directly. A clicking indicates proper activation.
	Defective switch assembly.	Replace switch assembly.
	Defective motor.	Check for voltage at armature port with switch pressed. If voltage is present, replace winch assembly.
	Nested and bounded cable within winch assembly.	Move free spool knob to the "free spool" position. Manually pull cable out of winch until end is met and then re-spool cable back into winch.
Water has entered motor.	Allow to drain and dry. Run in short bursts without load until completely dry.	
Winch makes noise, but rope does not move.	Contactors powered, but not winch.	If you can hear a clicking sound when you press the winch control, but the winch does not make any sounds, check the connections between the winch and the contactors.
	Winch not in proper gear.	Move free spool knob to the "locked spool" position, then recheck. If problem persists, a qualified technician needs to check and repair.
Winch operates too slowly.	Winch improperly loaded.	Check that the winch is clear and the rope is not bound up.
	Insufficient current or voltage.	The battery is weak, recharge. Run winch with the vehicle motor running (battery should have a strong charge).
	Loose or corroded battery cable connections.	Clean, tighten, or replace.
Winch overheating.	Winch running time too long.	Allow winch to cool down periodically.

Winch operates in one direction only.	Defective or stuck contactor.	Tap contactor to loosen contacts.
		Repair or replace contactor.
	Defective switch assembly.	Replace switch assembly.
	Defective brake assembly.	Replace winch assembly.

ELECTRICAL CONNECTION REFERENCE GUIDE



WARRANTY



FIVE YEAR MECHANICAL LIMITED WARRANTY AND THREE YEAR ELECTRICAL LIMITED WARRANTY

For the period of five (5) years from the purchase date, Kolpin will replace for the original purchaser, free of charge, any mechanical part or mechanical parts found upon examination by Kolpin to be defective in material, workmanship, or both. For the period of three (3) years from the purchase date, Kolpin will replace for the original purchaser, free of charge, any electrical part or electrical parts found upon examination by Kolpin to be defective in material, workmanship, or both.

All transportation costs incurred submitting product to Kolpin for warranty consideration must be borne by the purchaser. If Kolpin determines that the product must be returned to the factory for credit, please call 1-877-956-5746 for a Return Merchandise Authorization (RMA) number and shipping instructions.

This warranty does not apply to parts that have been damaged by accident, alteration, abuse, improper maintenance, normal wear, or other causes beyond the manufacturer's control. In order to protect you and your ATV, certain parts of the winch/plow system and/or hardware are designed to fail when the equipment is overstressed. Parts that are lost due to loosening and improper maintenance are not covered under warranty. This warranty does not cover removal or reinstallation labor fees of the winch/plow system and related components.

Peripheral products such as engines, electric motors, and actuators may carry an original manufacturer's warranty. Most hardware is general in nature and is easily obtained locally. Be sure to replace with minimum metric class 8.8 specification.

Kolpin Outdoors, Inc.

Telephone: (763)-478-5800

Toll Free: (877)-956-5746

Fax Number: (800)-245-7569

www.kolpin.com

Email: customerservice@kolpin.com