

# Can-Am Maverick X3 Aluminum Roof



## Product Instructions | Part No: 29410

**Application:** Can-Am Maverick X3, verify accessory fitment at Kolpin.com.

**Before You Begin:** Read these instructions and check to be sure all parts and tools are accounted for. Please retain these installation instructions for future reference and parts ordering information.

**Note:** If any hardware is missing, do not return to the store. Call us to help, Toll Free 1-877-956-5746.

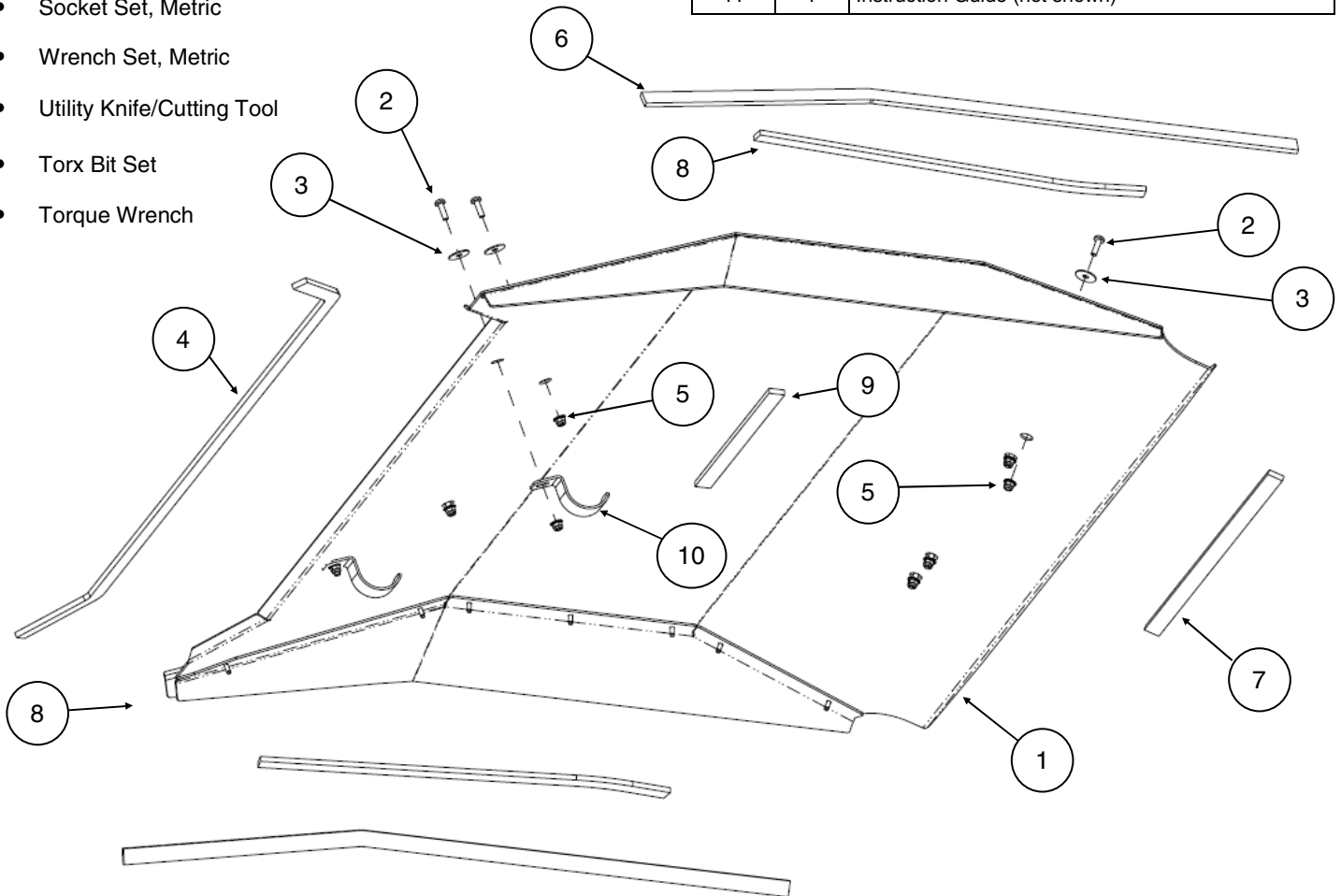
Items marked (\*) are included in Hardware Kit PN 29411.

### Tools Required:

- Socket Set, Metric
- Wrench Set, Metric
- Utility Knife/Cutting Tool
- Torx Bit Set
- Torque Wrench

This Kit includes:

Item	Qty	Part Description
1	1	Maverick X3 Roof Assembly
2*	8	Button Screw, Zinc Plated, M6 x 1.0 - 20mm LG
3*	8	Flat Washer, Zinc Plated, M8
4*	1	Front Foam Seal
5*	8	Flange Locknut, Zinc Plated, M6-1.0
6*	2	Thick Side Foam 32" (816mm)
7*	1	Foam Seal - Rear 20" (508mm)
8*	2	Thick Foam Seal - Middle 19.5" (493mm)
9*	1	Foam Seal - Middle 12" (305mm)
10*	2	Clamp, Painted, 2.0" Diameter
11	1	Instruction Guide (not shown)



Kolpin Outdoors, Inc. | 9955 59th Ave N | Plymouth, MN 55442

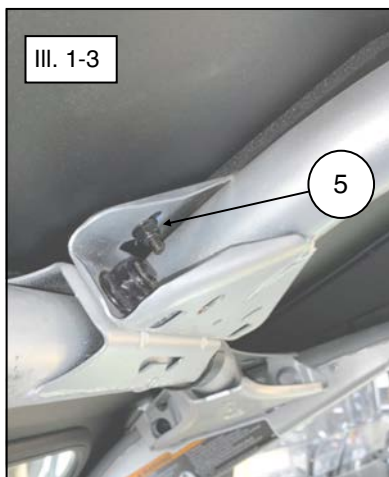
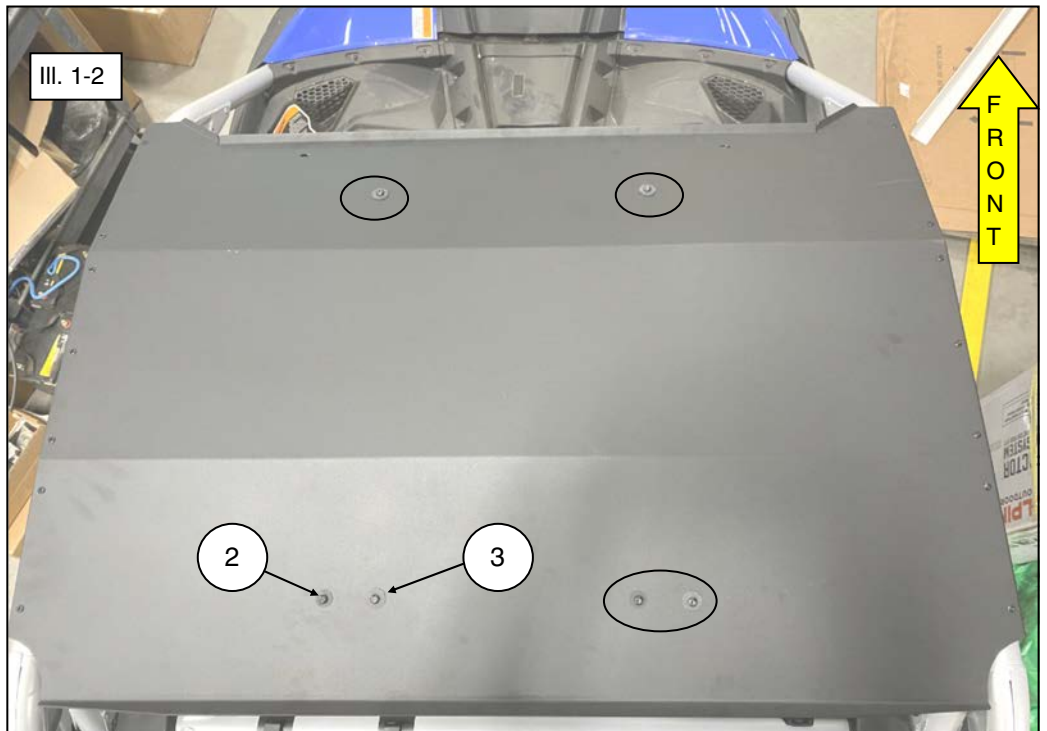
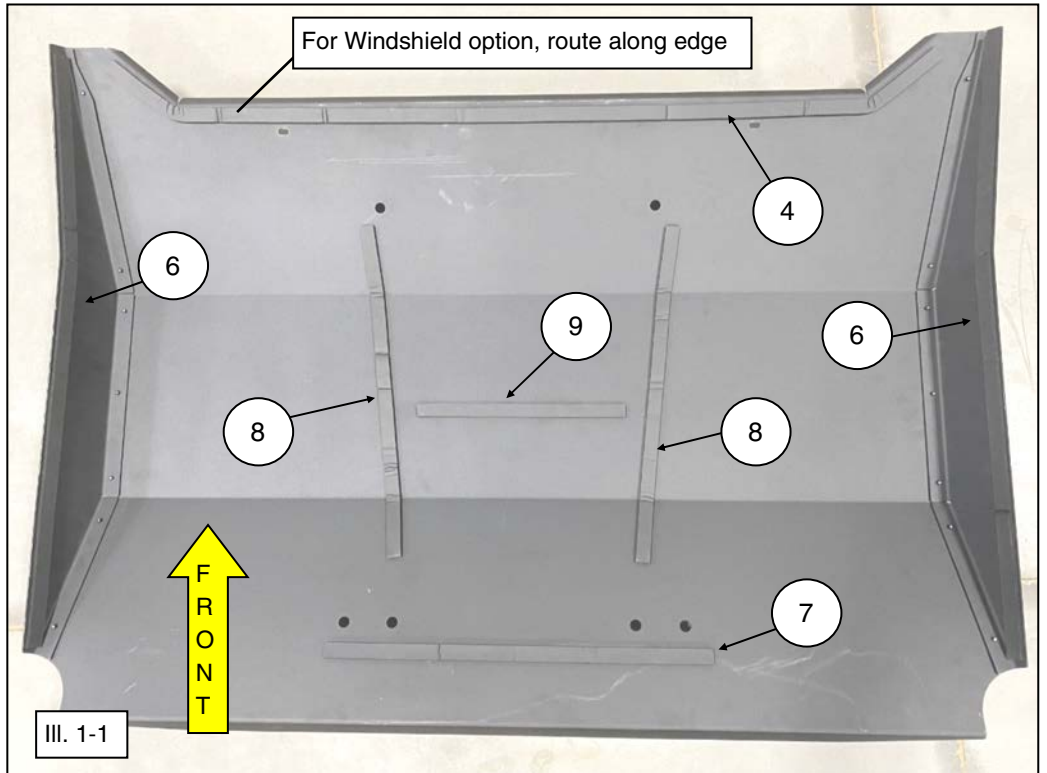
(877) 956-5746 or (763) 478-5800 | [www.kolpin.com](http://www.kolpin.com) | [customerservice@kolpin.com](mailto:customerservice@kolpin.com)

**Assembly Time:** Approximately 15 minutes

**Important:** Your Kolpin Steel Roof Kit is exclusively designed for your vehicle. Please read the installation instructions thoroughly before beginning. Installation is easier if the vehicle is clean and free of debris. For your safety, and to ensure a satisfactory installation, perform all installation steps correctly in the sequence shown. For better cab assembly procedure, install kits in the following order: front window, rear window, and roof.


**Installation Instructions:**

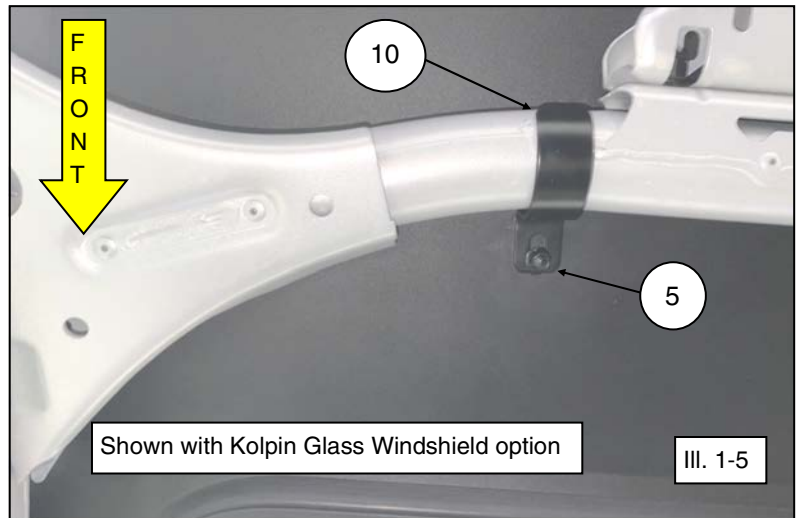
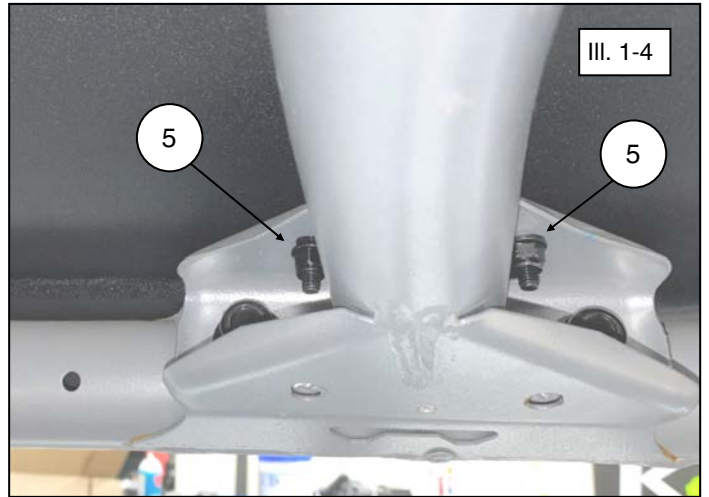
1. Shift vehicle transmission into "PARK". Turn key to "OFF" position and remove from vehicle.
2. Clean lower surface of roof (item #1) as required, then apply side foam seal strips (items #4, #6, #7, #8 and #9) as shown. Trim seals as required. (See illustrations 1-1 and 1-2).  
**Note, item #4 is optional install and is used when sealing against windshield.**
3. Place roof on the top of the vehicle cab frame.
4. Secure the roof to the vehicle using the M6 screws (item #2) and flat washers (item #3) as shown. Fasten using the M6 locknuts (item #5) at the six cab frame gusset tab locations. (See illustrations 1-2, 1-3 and 1-4).  
**Note: Do not tighten hardware at this step since adjustments may be required later.**



### Installation Instructions (Continued):

- From the top surface, secure front edge of roof using M6 screws (item #2) and flat washers (item #3) as shown. Secure roof using clamps (item #10) placed around front cross-member tubing and fasten using locknuts (item #5). (See illustration 1-5).
- Tighten all hardware to specification.

 = T
<b>6MM FASTENER TORQUE:</b> 7 ft. lbs. (9.5 Nm)



### Use and Care Information:

- Check the accessory mounts frequently and retighten hardware if necessary.
- Replace this accessory with a new one if it is damaged.
- Never use petroleum solvents such as gasoline, thinner, benzene, acid or alkaline cleaners.

For additional assistance, please contact Kolpin customer service department at (877) 956-5746 or (763) 478-5800 or email [customerservice@kolpin.com](mailto:customerservice@kolpin.com)

### One Year Limited Warranty

For the period of one (1) year from the purchase date, Kolpin will replace for the original purchaser, free of charge, any part or parts found upon examination by Kolpin to be defective in material, workmanship, or both.

All transportation costs incurred submitting product to Kolpin for warranty consideration must be borne by the purchaser. If Kolpin determines that the product must be returned to the factory for credit, please call 1-877-956-5746 for a Return Merchandise Authorization (RMA) number and shipping instructions.

This warranty does not apply to parts that have been damaged by accident, alteration, abuse, improper maintenance, normal wear, or other causes beyond the manufacturer's control. In order to protect you and your ATV, certain parts of the accessory system and/or hardware are designed to fail when the equipment is over-stressed. Parts that are lost due to loosening and improper maintenance are not covered under warranty. This warranty does not cover removal or reinstallation labor fees of the plow system and related components.

Peripheral products such as engines, electric motors, and actuators may carry an original manufacturer's warranty. Most hardware is general in nature and is easily obtained locally. Be sure to replace with minimum metric class 8.8 specification.