

# Polaris Ranger SP 570 Front Half Steel Doors

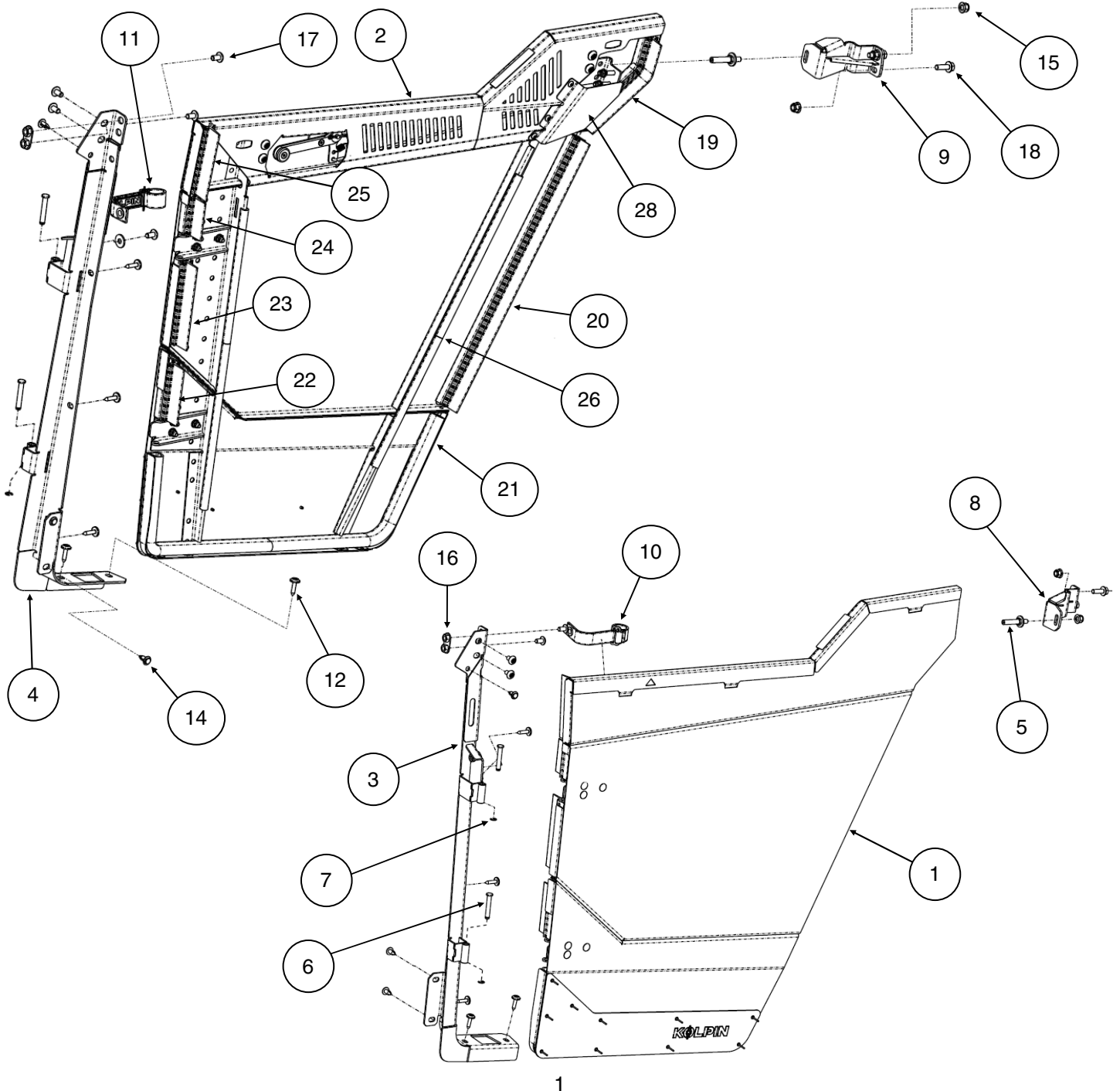


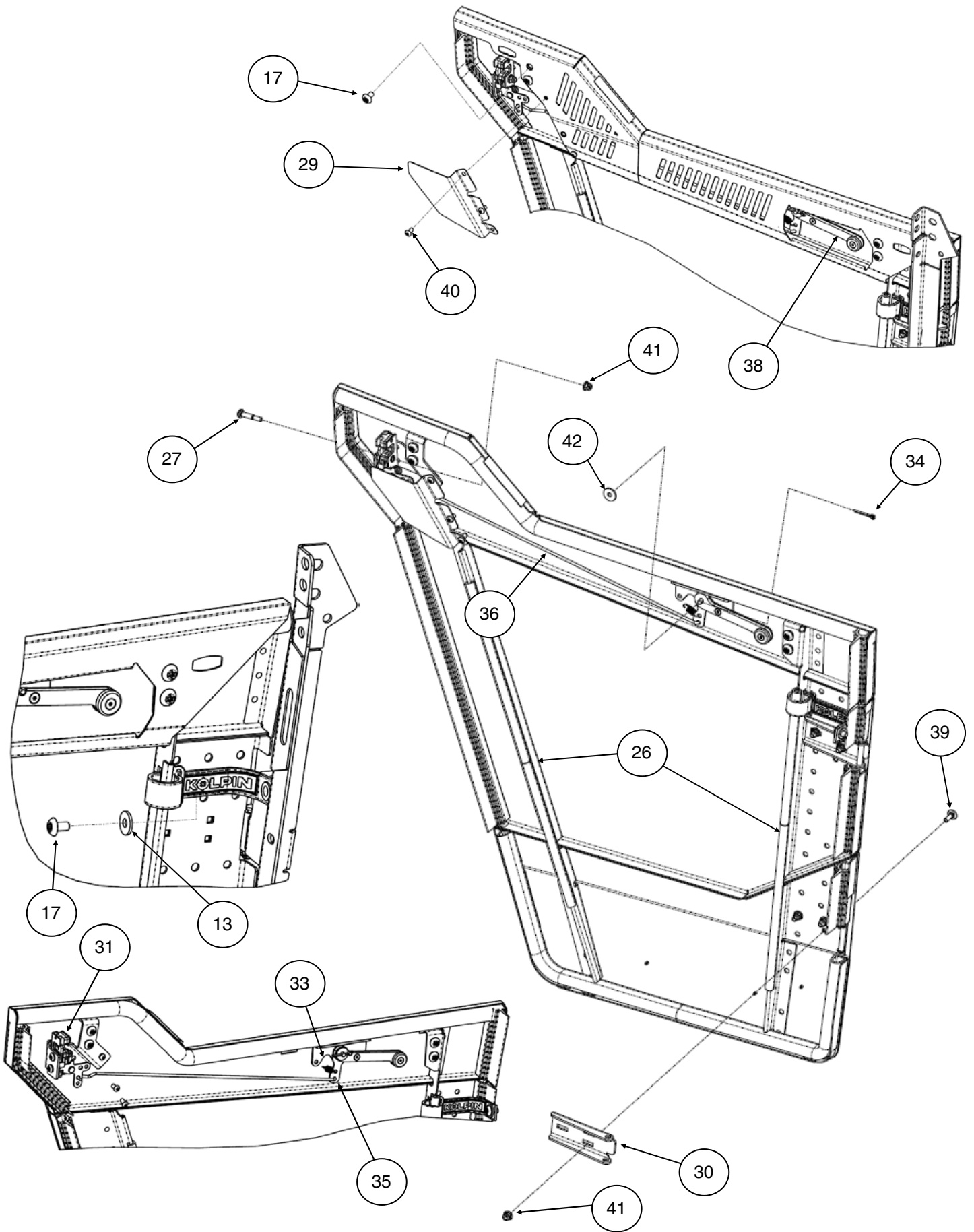
Product Instructions | Part No: 32100

**Application:** Polaris Ranger SP 570, verify accessory fitment at Kolpin.com.

**Before You Begin:** Read these instructions and check to be sure all parts and tools are accounted for. Please retain these installation instructions for future reference and parts ordering information.

**Note:** If any hardware is missing, do not return to the store. Call us to help, Toll Free 1-877-956-5746.





**This Kit includes:**

Item	Qty	Part Description	Part Number
1	1	LH Ranger Door	-
2	1	RH Ranger Door	-
3	1	LH Vehicle-Side Hinge Bracket	32100-CP02
4	1	RH Vehicle-Side Hinge Bracket	32100-CP14
5	2	Door Striker Pin, Zinc Plated	32000-CP20
6	4	Door Hinge Pin, Zinc Plated	32000-CP01
7	4	Pin E-Clip, M6, DIN 6799	32000-CP01
8	1	LH Door Striker Bracket	-
9	1	RH Door Striker Bracket	-
10	1	LH Door Limit Strap	32000-CP24
11	1	RH Door Limit Strap	32000-CP24
12	10	Truss Screw, Zinc Plated, M6 x 1.0 - 25mm LG, T40 Thread Forming	7519650
13	2	M8 Flat Washer, Zinc Plated	7555960
14	6	Plastic Tuflok Fender Clip Body Rivet	7661855
15	6	Hex Flange Locknut, Zinc Plated, M8 x 1.25	7547332
16	2	M8 Nut Plate bracket	-
17	10	Torx Button Head Screw, Zinc Plated, M8 x 1.25 - 15mm LG	7520311
18	4	Hex Flange Screw, Zinc Plated, M8 - 1.25 x 25mm LG	7519739
19	2	D-Trim Door Seal Strip, 208mm LG	32100-CP16
20	2	D-Trim Door Seal Strip, 510mm LG	32100-CP16
21	2	D-Trim Door Seal Strip, 902mm LG	32100-CP16
22	2	D-Trim Door Seal Strip, 103mm LG	32100-CP16
23	2	D-Trim Door Seal Strip, 151mm LG	32100-CP16
24	2	D-Trim Door Seal Strip, 69mm LG	32100-CP16
25	2	D-Trim Door Seal Strip, 128mm LG	32100-CP16
26	4	Edge Rubber Trim Seal, 550mm LG	32100-CP16
27	4	Cap Head Shoulder Screw, Zinc Plated, M6 - 1.0 x 35mm LG	-
28	1	RH Door Latch Cover	-
29	1	LH Door Latch Cover	-
30	4	Door Hinge, Zinc Plated	32000-CP02
31	1	LH Door Inner Latch, Zinc Plated, R4-10	32000-CP03
32	1	RH Door Inner Latch, Zinc Plated, R4-10 (not shown)	32000-CP03
33	2	Door Lever Spring, Zinc Plated	-
34	2	Cotter Pin, Zinc Plated	-
35	4	Link Clip Retainer, Black	32002
36	2	Linkage Rod, Zinc Plated	-
37	1	RH Inner Door Handle (not shown)	32000-CP18
38	1	LH Inner Door Handle	32000-CP08
39	12	Carriage Screw, Zinc Plated, M6 - 1.0 x 20mm LG	7518994
40	6	Torx Button Head Screw, Zinc Plated, M6 x 1.0 - 12mm LG	7518330
41	16	Hex Flange Locknut, Zinc Plated, M6 - 1.0	7548027
42	2	M6 Flat Washer, Zinc Plated	7556386

## Tools Required:

- Safety Glasses
- Socket Set, Torx Bit
- Socket Set, Metric
- Torque Wrench
- Wrench Set, Metric

**Assembly Time:** Approximately 30 minutes

*Note: The 32100 kit comes mostly assembled from the factory. Some assembly is required.*

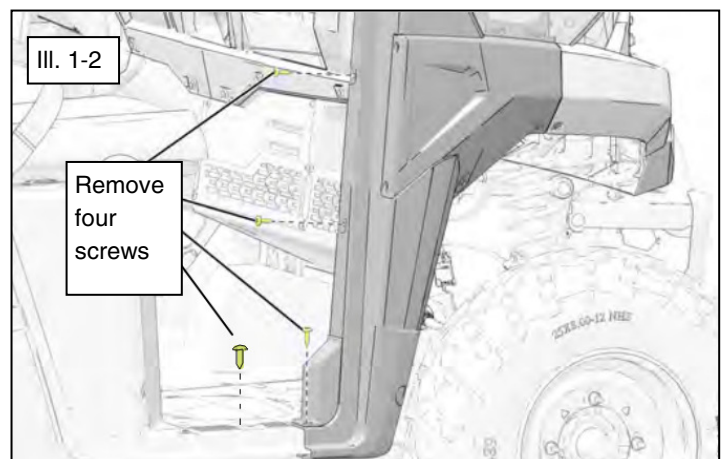
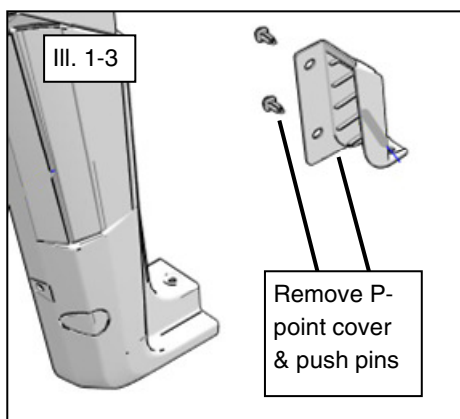
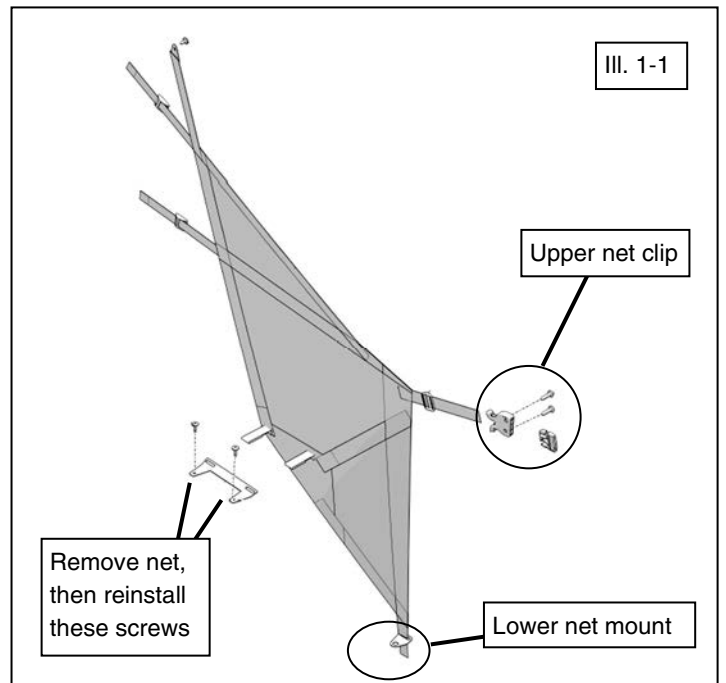
**Important:** Your Kolpin Ranger SP 570 Half Door Kit is exclusively designed for your vehicle. Please read the installation instructions thoroughly before beginning. Installation is easier if the vehicle is clean and free of debris. For your safety, and to ensure a satisfactory installation, perform all installation steps correctly in the sequence shown. Additional time may be required to accommodate other installed accessories.

## NOTICE

Kolpin recommends two people install this kit.

### RANGER PREPARATION:

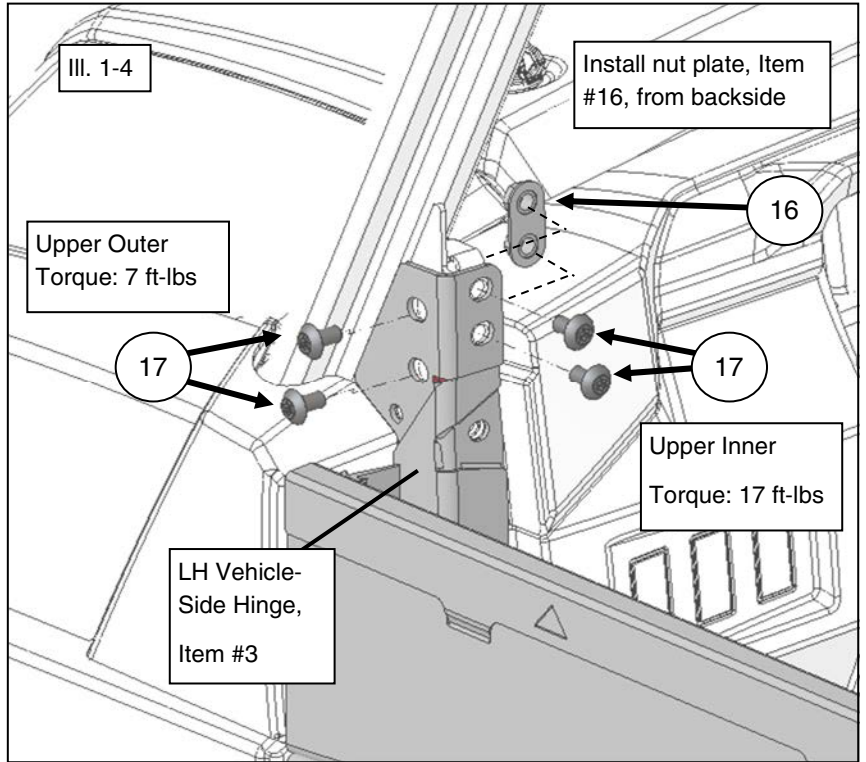
1. Shift vehicle transmission into "PARK". Turn ignition key to "OFF" position and remove from vehicle ignition.
2. Using hand tools (not electric powered), remove LH side net, upper net clip on door frame and lower net mount on floor. Remove the other T40 Torx drive head screws from the door frame as shown. Remove the two plastic push rivets and remove the p-point cover. (See illustrations 1-1, 1-2 and 1-3). **Note, reinstall the screws noted to hold plastic lower rocker bodywork under seat bottoms .**
3. Remove the LH RANGER door assembly from the packaging.



**RANGER DOOR INSTALLATION:**

4. Install LH vehicle-side hinge (item #3) first using two M8 screws (item #17) with the M8 nut plate (item #16). Secondly using four M6 screws (item #12) install into vehicle hinge locations as shown. Thirdly install the upper two outer M8 screws into the A-pillar tab. (See illustrations 1-4, 1-5 and 1-6). **Note, some items hidden for clarity. Start M8 screws by hand before tightening with tool.**

**NOTE**  
LH Door is pre-assembled to LH Vehicle-Side Hinge.

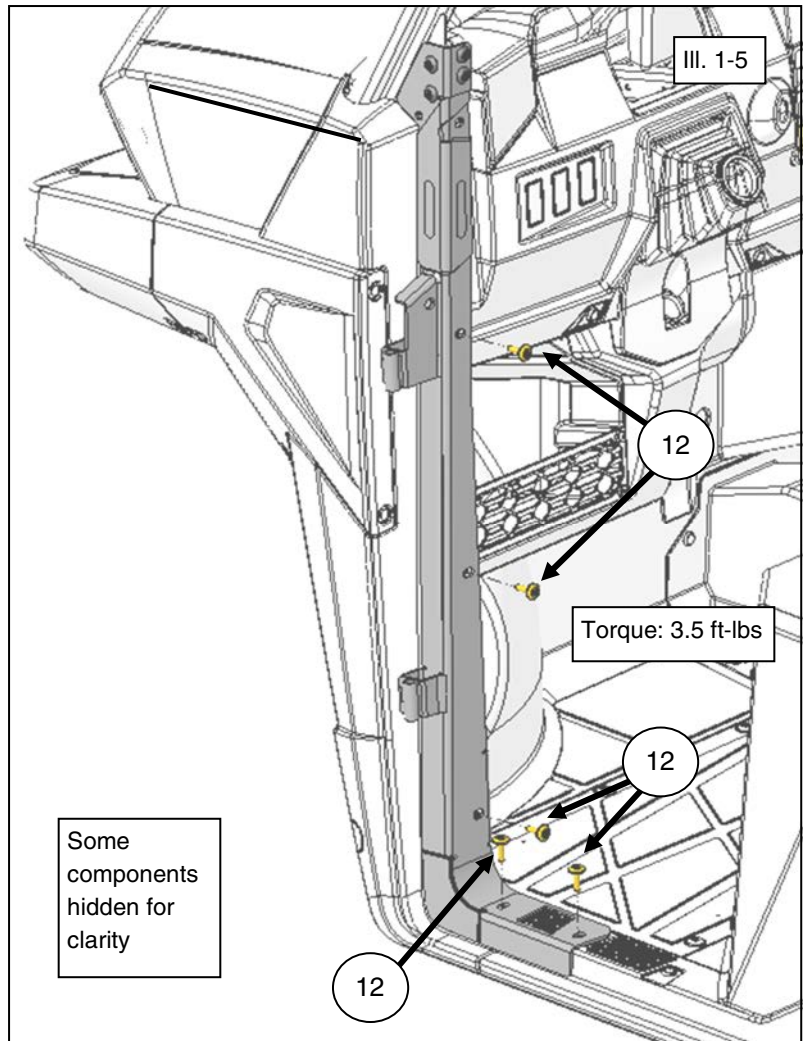


5. Tighten screws to specification noted.

**UPPER INNER ITEM #17 M8 FASTENER TORQUE:**  
17 ft. lbs. (23.0 Nm)

**UPPER OUTER ITEM #17 M8 FASTENER TORQUE:**  
7 ft. lbs. (9.5 Nm)

**ITEM #12 M6 FASTENER TORQUE:**  
3.5 ft. lbs. (4.7 Nm)



**RANGER DOOR INSTALLATION (continued):**

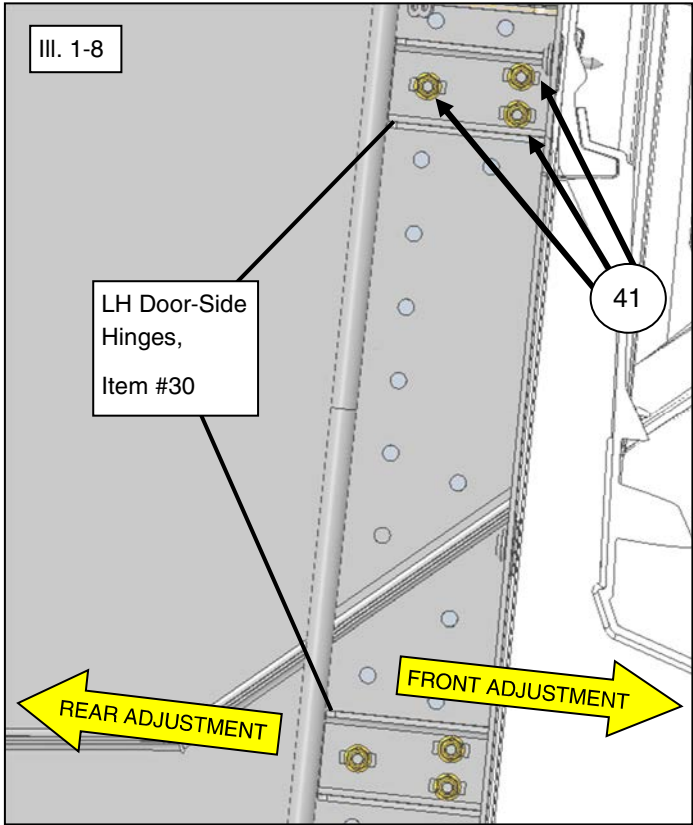
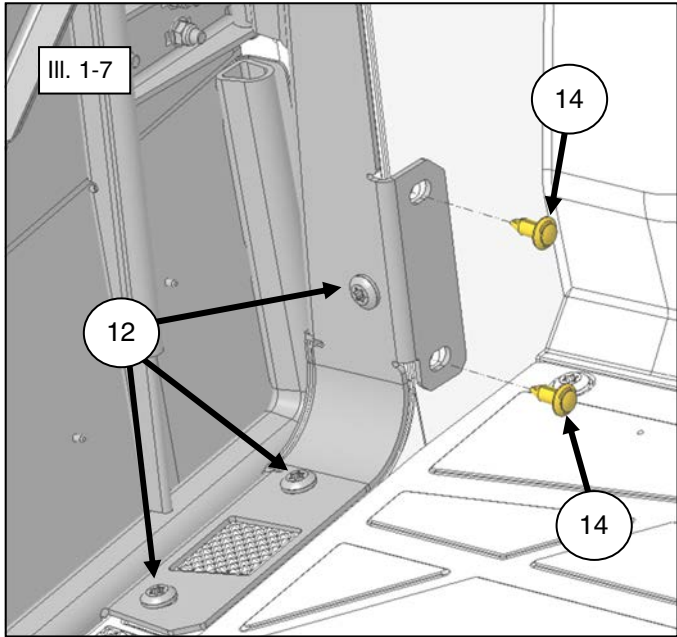
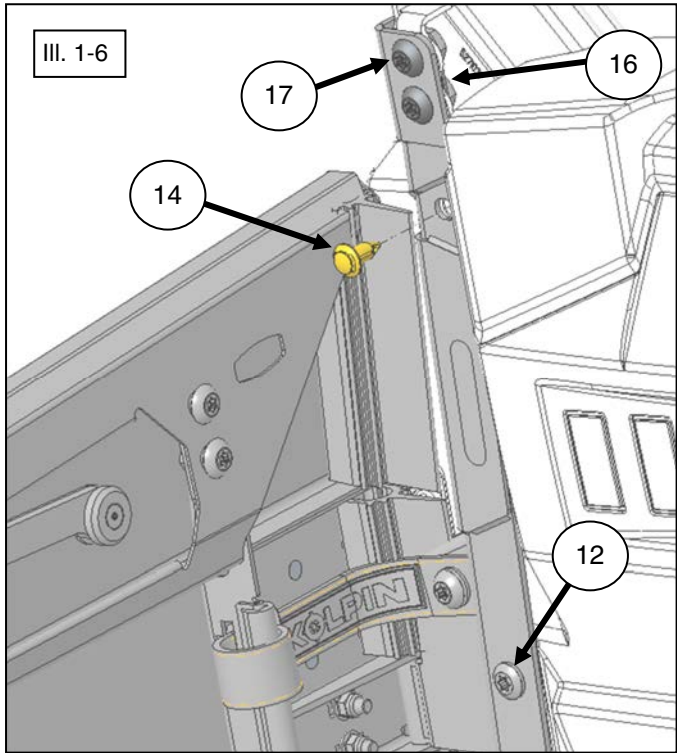
6. Install plastic push rivet (item #14) into the three vehicle hinge (item #3) locations as shown. (See illustrations 1-6 and 1-7).
7. Slightly loosen the LH door-side hinges (item #30) by loosening the six M6 hex flange locknuts (item #41). (See illustration 1-8).
8. Then close door. Push door inwards while centering door in ROPS/chassis opening, checking front-to-rear adjustment, then tighten locknuts to specifications. (See illustrations 1-6 and 1-9).

**TIP**

Have one person push and center the door, and a second person tighten the screws.

**⌘ = T**


**ITEM #41 DOOR HINGE M6 LOCK-NUTS / ITEM # 16 STRIKER BRACKET**  
**M6 FASTENER TORQUE:**  
 7 ft. lbs. (9.5 Nm)





## RANGER DOOR INSTALLATION (continued):

- Remove the OEM M8 fasteners on the ROPS rear cab support. (See illustration 1-9).
- Install LH striker bracket (item #8) using two hex flange M8 screws (item #18) with two M8 locknuts (item #15) as shown. (See illustrations 1-10 and 1-11).
- Tighten to specifications noted.

 = T

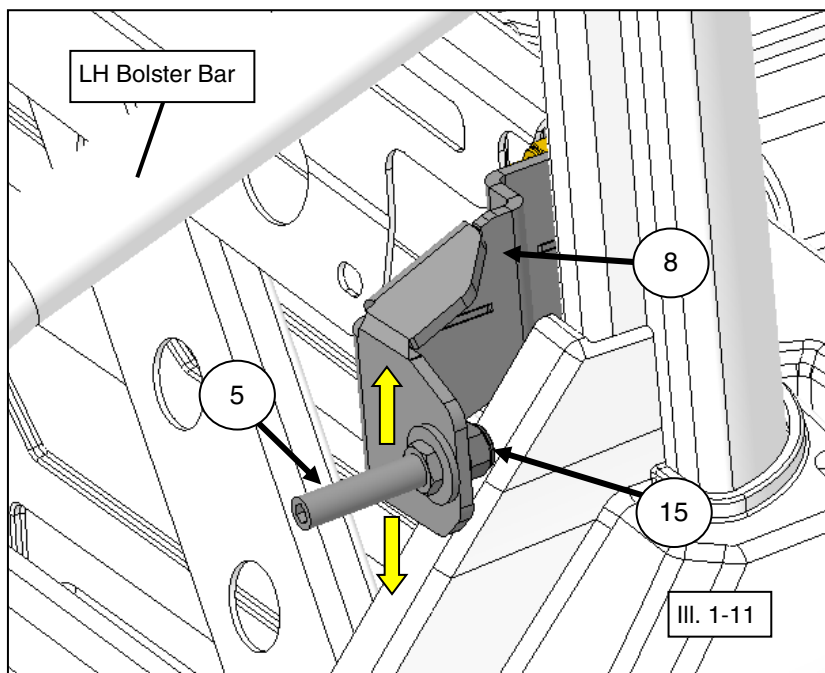
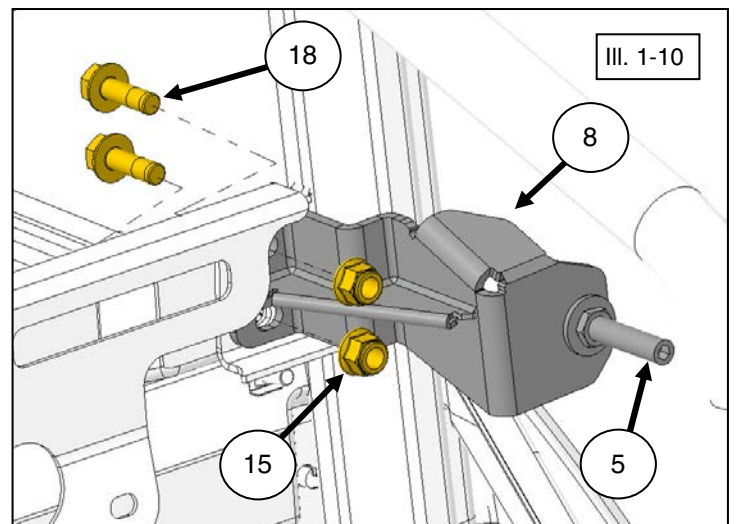
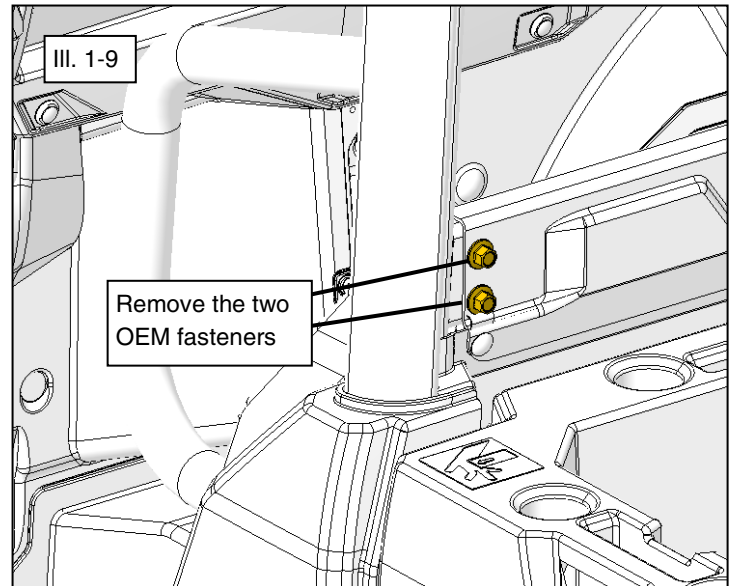
**ITEM #18 M8 FASTENER TORQUE:**  
18 ft. lbs. (24.4 Nm)

**NOTE**

Striker pin (item #5) and striker locknut (item #15) is pre-assembled to LH Striker Bracket.

 = T

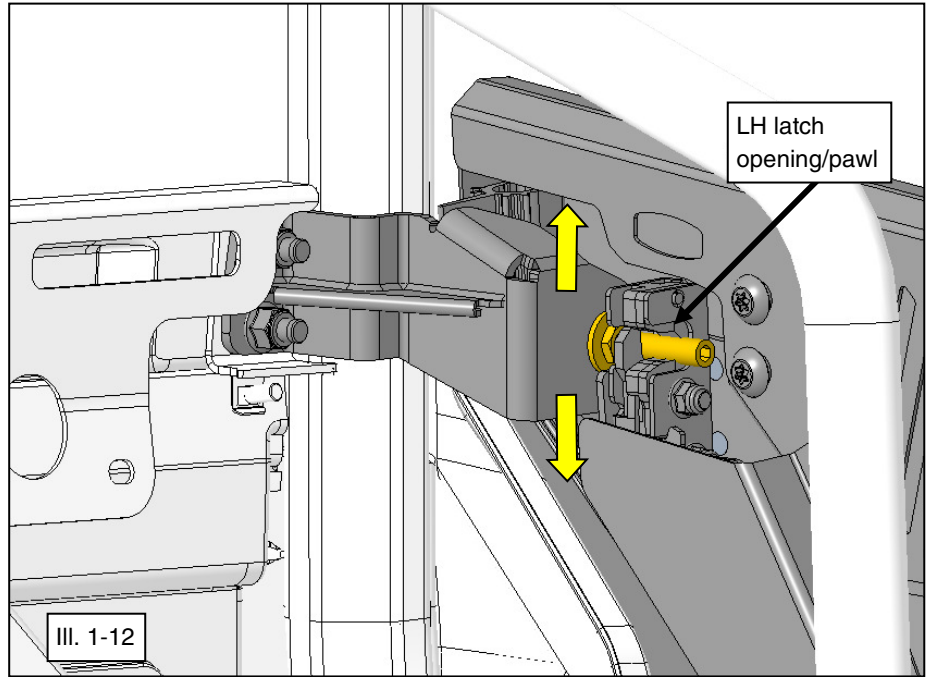
**ITEM #15 STRIKER PIN M8 LOCKNUT FASTENER TORQUE:**  
12 ft. lbs. (16.3 Nm)




**RANGER DOOR INSTALLATION  
(continued):**

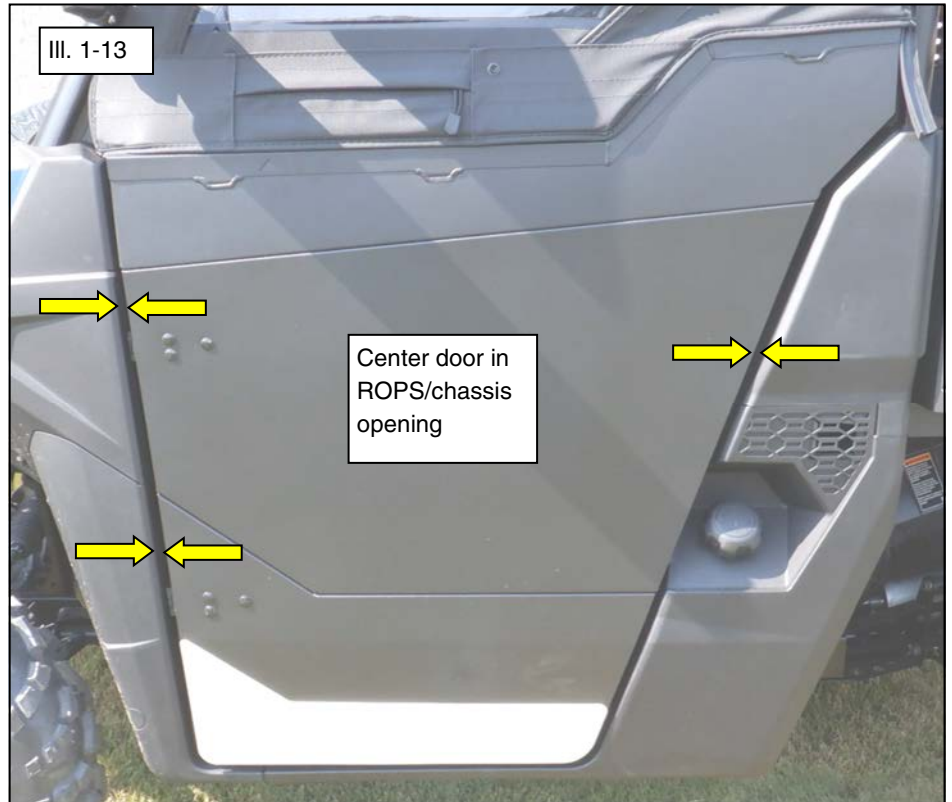
12. Open door latch handle (lifting up on orange handle), then slowly close door and observe engagement of striker pin into door latch.
13. Adjust striker pin to achieve the following:

**HEIGHT:** Pin should be centered vertically between upper and lower latch opening/ pawls. To adjust, loosen the M8 locknut (item #15) on striker pin/bracket, slide striker pin up or down as required, then retighten M8 striker pin locknut to specification. (See illustrations 1-11 and 1-12).



 = T
<b>ITEM #15 STRIKER PIN M8 LOCKNUT FASTENER TORQUE:</b> 12 ft. lbs. (16.3 Nm)

 = T
<b>ITEM #43 LATCH M6 SCREW FASTENER TORQUE:</b> 4 ft. lbs. (5.4 Nm)





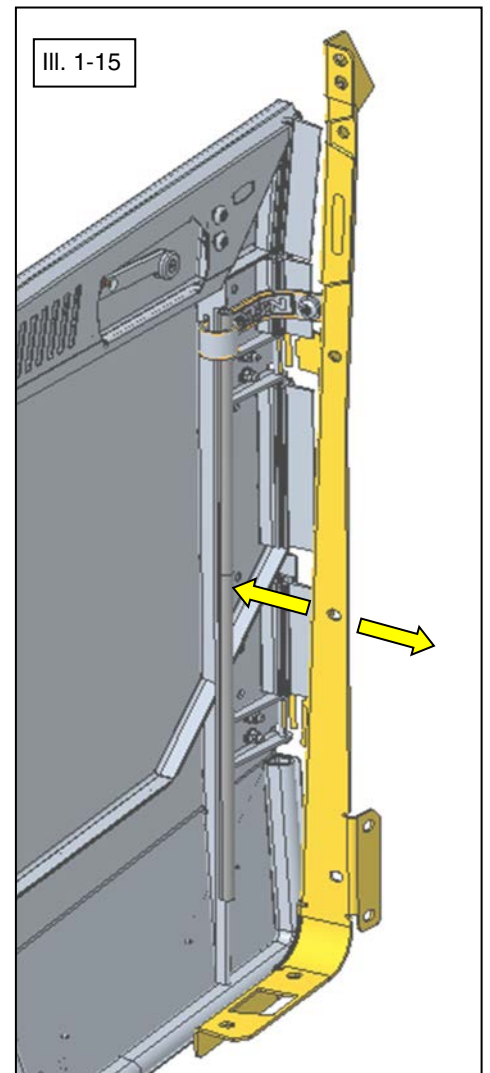
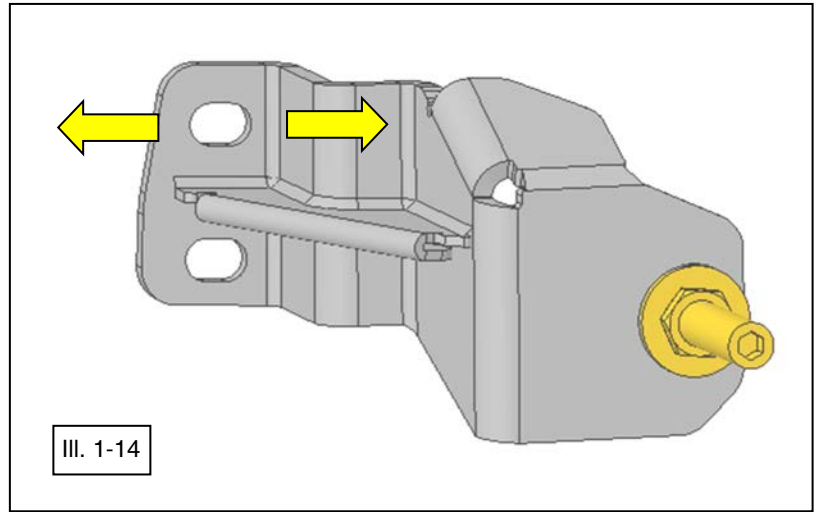
## RANGER DOOR INSTALLATION

(continued):

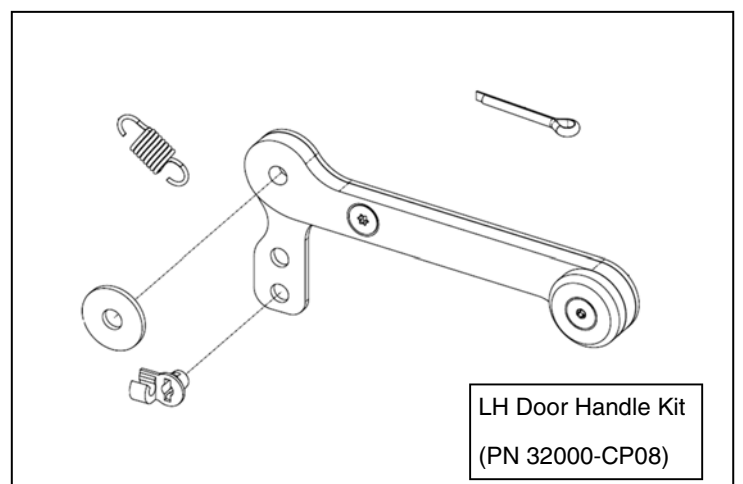
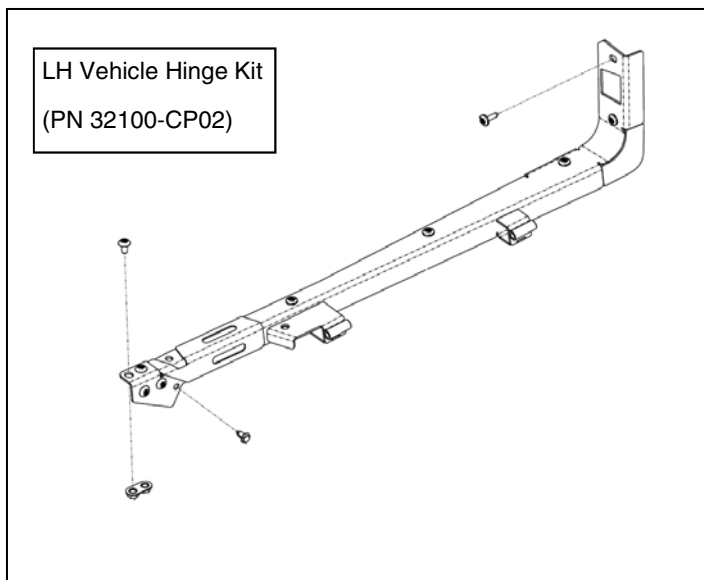
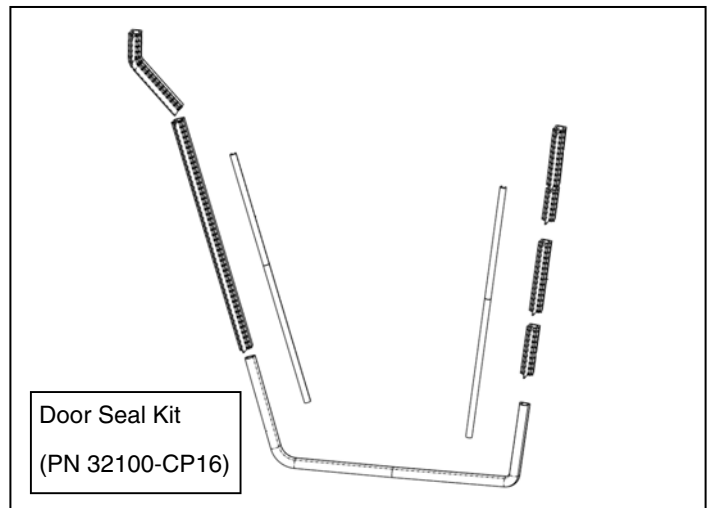
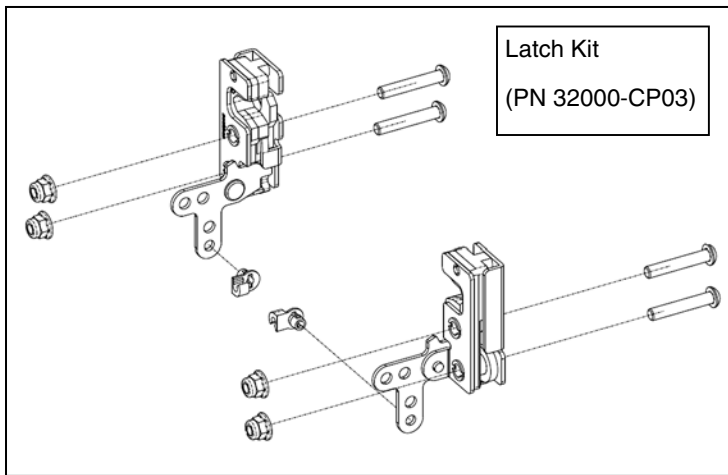
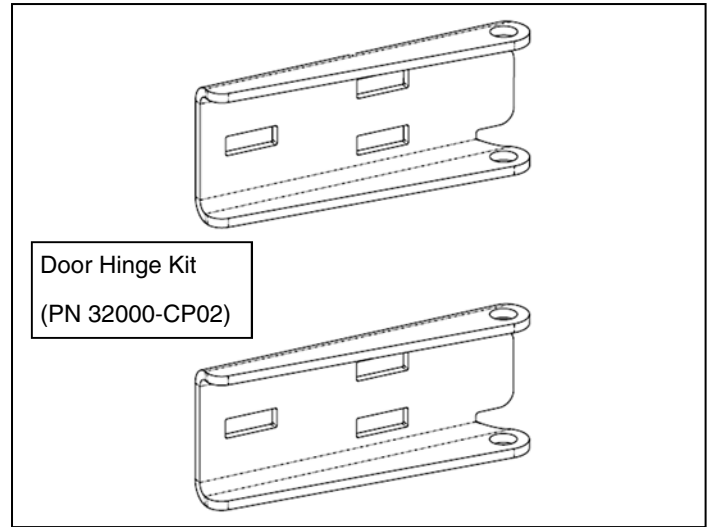
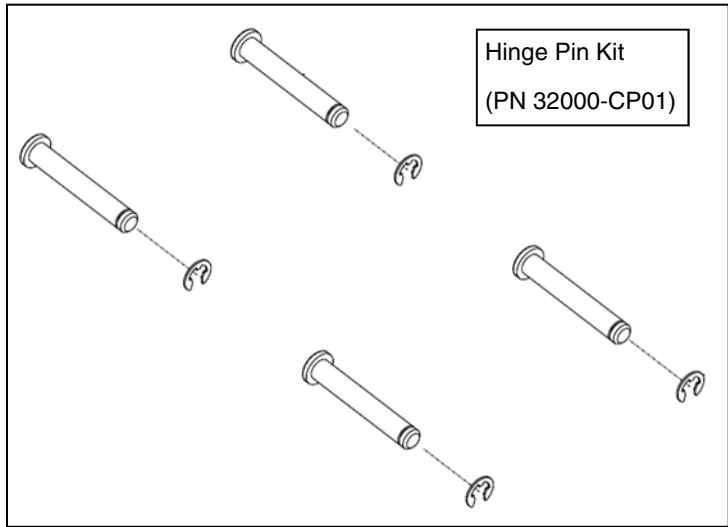
14. Adjust vehicle-hinge and/or striker bracket to achieve the following:

**DEPTH:** There should be clearance between the top of door and bolster bar. To adjust, loosen striker bracket two screws, and slide bracket left-right of vehicle centerline. To provide more depth adjustment, loosen the vehicle-side hinge six screws and slide bracket left-right of vehicle centerline. (See illustrations 1-14 and 1-15).

15. Repeat steps 2-14 for RH Door Vehicle-Side Hinge, RH Door and RH Striker Bracket.

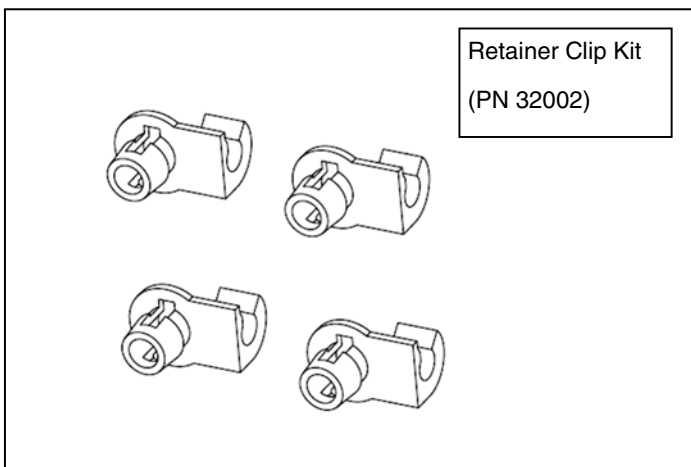
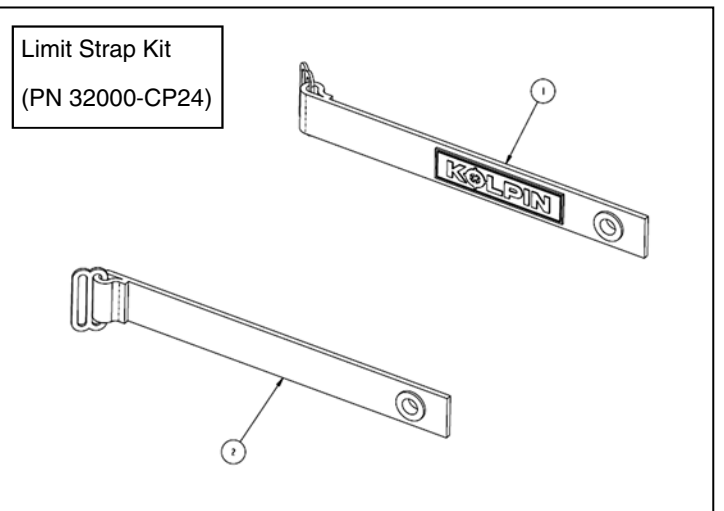
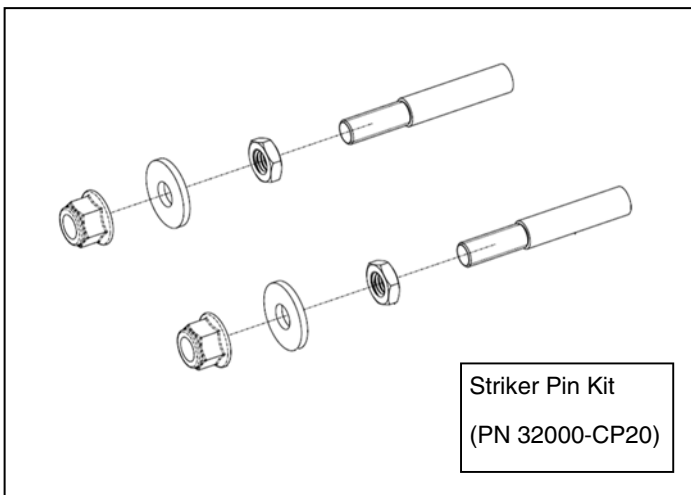
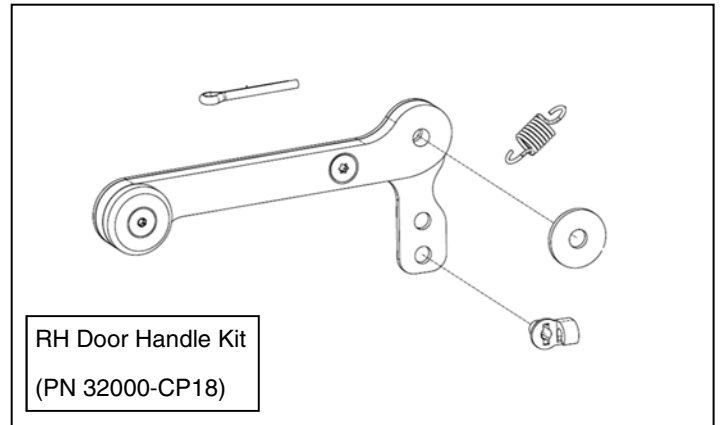
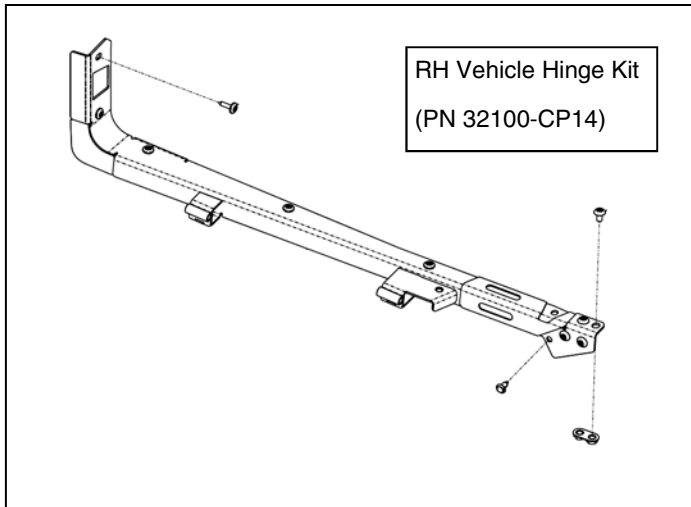


# SERVICE KITS



# SERVICE KITS

(continued)



**Use and Care Information:**

- Grease pins on upper and lower hinges using Polaris All Season Grease (or equivalent).
- Check the accessory mounts frequently and retighten hardware if necessary.
- Replace this accessory with a new one if it is damaged.
- Never use petroleum solvents such as gasoline, thinner, benzene, acid or alkaline cleaners.

For additional assistance, please contact Kolpin customer service department at (877) 956-5746 or (763) 478-5800 or email [customerservice@kolpin.com](mailto:customerservice@kolpin.com)

**One Year Limited Warranty**

For the period of one (1) year from the purchase date, Kolpin will replace for the original purchaser, free of charge, any part or parts found upon examination by Kolpin to be defective in material, workmanship, or both.

All transportation costs incurred submitting product to Kolpin for warranty consideration must be borne by the purchaser. If Kolpin determines that the product must be returned to the factory for credit, please call 1-877-956-5746 for a Return Merchandise Authorization (RMA) number and shipping instructions.

This warranty does not apply to parts that have been damaged by accident, alteration, abuse, improper maintenance, normal wear, or other causes beyond the manufacturer's control. In order to protect you and your ATV, certain parts of the accessory system and/or hardware are designed to fail when the equipment is over-stressed. Parts that are lost due to loosening and improper maintenance are not covered under warranty. This warranty does not cover removal or reinstallation labor fees of the door system and related components.

Peripheral products such as engines, electric motors, and actuators may carry an original manufacturer's warranty. Most hardware is general in nature and is easily obtained locally. Be sure to replace with minimum metric class 8.8 specification.