



PLOW MOUNT KIT

FOR KAWASAKI MULE PRO SERIES

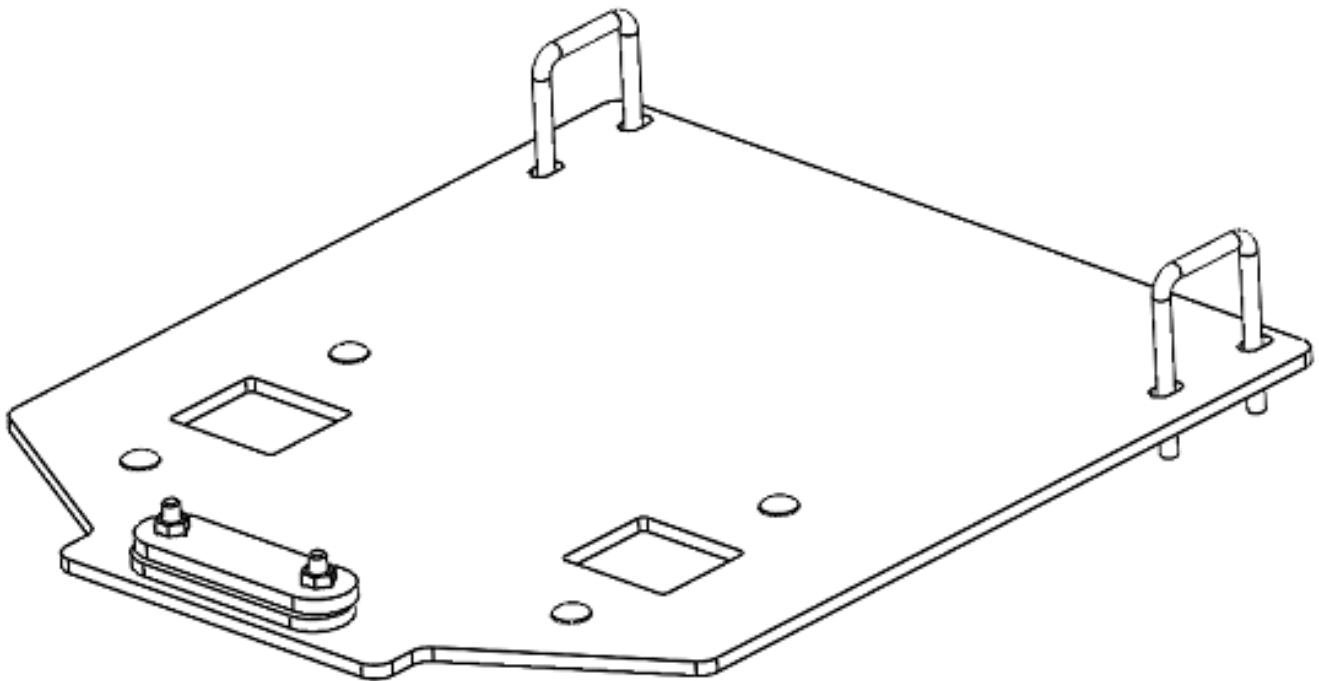
P/N 34-2010

ASSEMBLY / OWNERS MANUAL

Application

PLOW PUSH FRAME NO. 34-0000 or 34-0070

Before you begin, please read these instructions and check to be sure all parts and tools are accounted for. The following instructions contain details required to install and service the contents of this kit.



OPERATING INSTRUCTIONS

Congratulations! You've just purchased the most durable plow component in the industry. Kolpin plow components work great for summer or winter plowing. With proper care and maintenance, your Kolpin plow system will last for years to come!

NOTICE
Plow operation requires additional components for operation: <i>Kolpin Plow Blade, Kolpin Plow Push Frame, High Rise Plow Push Frame, Winch Kit *</i>
<i>*These components may be specific to your vehicle.</i>



Please read and understand all assembly instructions, notices and warnings before assembling and operating your Kolpin plow system.

Follow these guidelines to ensure satisfactory operation:

- Read this manual and your ATV/ UTV operators manual before use.
- Periodically check for wear and tightness of all fasteners. Replace or re-torque fasteners as necessary.
- Before first use, set plow in the furthest right or left angled position to check for interference with the vehicle.
- Operate with extreme caution on slopes and rough terrain. Be familiar with the area before you plow.
- Be aware of immovable objects that could be hidden in the area you are plowing.
- To avoid damage when pushing snow into a pile, reverse direction before raising the plow blade.
- Do not ram the plow blade into piles of snow.
- For best results, set the suspension preload of your ATV/ UTV to the stiffest setting.
- To reduce steering effort and increase mobility, set the air pressure of your tires to the maximum pressure specification.
- The plow skids are adjustable. General skid setting is even with the plow wear bar bottom edge, higher settings reduce the chance of rocks and gravel from being collected.
- To increase traction during plow operation, operators can try: Securing weight to the ATV/ UTV for additional tire downforce, reducing tire air pressure, or installing tire chains.

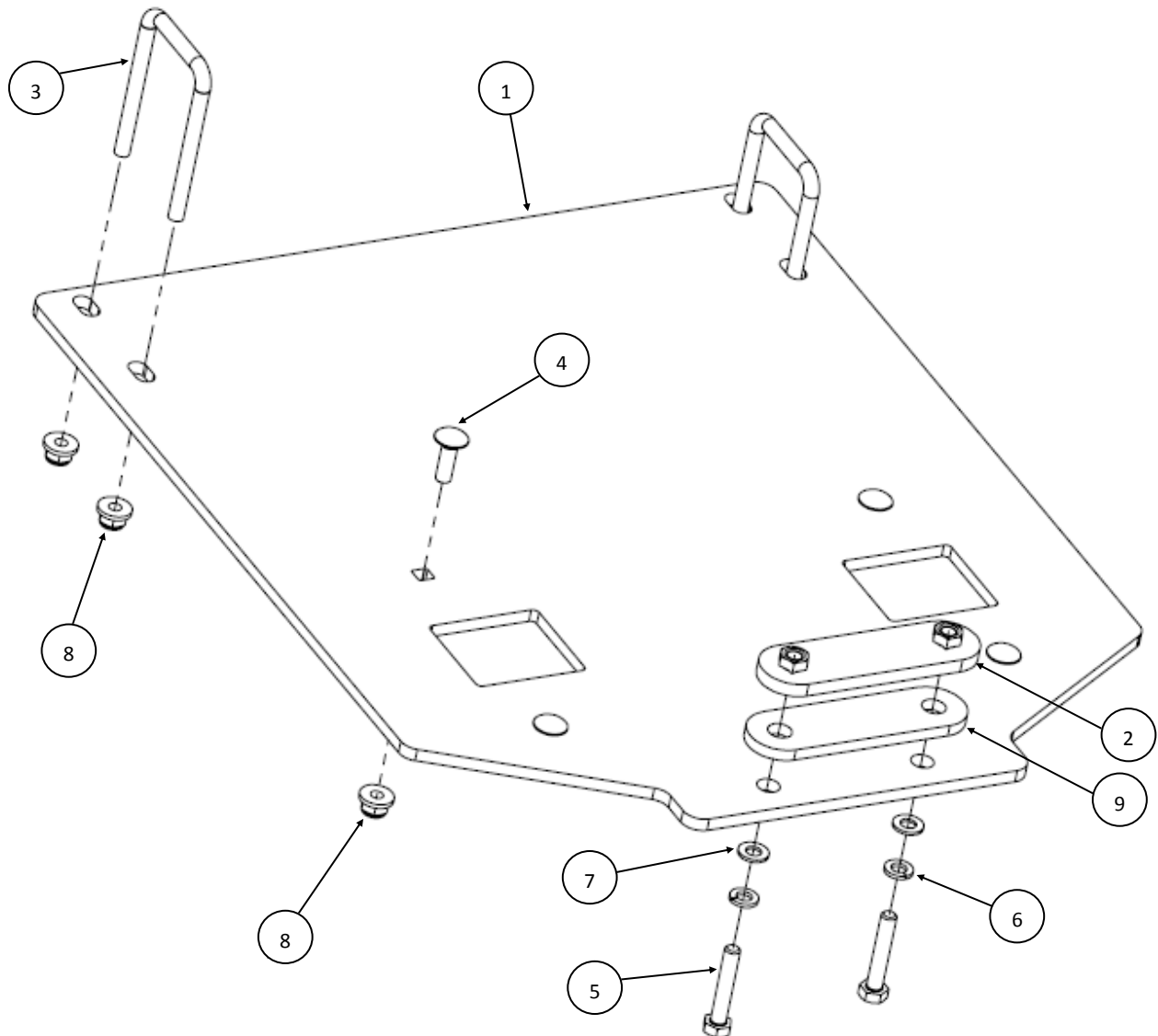
SAFETY INFORMATION

Our plow systems were designed with your safety in mind. Please read and understand all Cautions, Notices and Warnings in this manual before you begin. In order to protect you and your ATV/UTV, certain parts of the plow system and/or hardware are designed to fail when the equipment is over-stressed.

 DANGER 
TO AVOID SERIOUS INJURY OR DEATH:
1. DO NOT EXCEED 5 MPH (8 KMH) WITH BLADE INSTALLED.
2. OPERATE WITH EXTREME CAUTION ON SLOPES, STEEP GRADES, AND ROUGH TERRAIN.
3. ALLOW NO RIDERS ON BLADE OR ATV/UTV WHILE MOVING OR STATIONARY.
4. KEEP BYSTANDERS AWAY FROM THE BLADE OR ATV/UTV WHILE MOVING OR STATIONARY.
5. WHEN PUSHING HEAVY MATERIAL, DIRECTION CONTROL MAY BECOME DIFFICULT.
6. BEFORE ADJUSTING BLADE: STOP ATV/UTV ENGINE; SET AND LOCK BRAKES; RAISE AND LOCK BLADE IN UP POSITION. DO NOT ATTEMPT TO RAISE BLADE BY HAND; USE THE LIFT MECHANISM ONLY.
7. LOWER BLADE TO DOWN POSITION WHEN BLADE AND ATV/UTV ARE NOT IN USE.
8. READ BLADE'S INSTRUCTION SHEETS AND ATV/UTV OWNER MANUAL.

Kit Contents:

Item	Qty	Part Description	Part Number
1	1	Mule Mount Plate	-
2	1	Spacer Nut Bracket	-
3	2	Square U-Bolts	-
4	4	Carriage Bolt, Zinc Plated, M8-1.25 x 25mm LG	-
5	2	Hex Bolt, Zinc Plated, M8-1.25 x 45mm LG	-
6	2	Lock Washer, Zinc Plated, M8	-
7	2	Flat Washer, Zinc Plated, M8	-
8	8	Flange Locknut, Zinc Plated, M8-1.25	-
9	1	Spacer Plate	-



BEFORE YOU BEGIN:

- Your Kolpin accessory is exclusively designed for your vehicle
- Please read and understand all instructions
- Verify all parts and tools are accounted for
- To ensure a satisfactory installation, follow all steps correctly and in the sequence described
- Keep these instructions for future reference or for informational requests
- To facilitate installation, make sure that your vehicle is clean and free of debris
- All directions referring to right and left are when the rider is sitting on the machine
- The plastic skid plate will need to be modified to be reinstalled on the vehicle

TOOLS REQUIRED:

- #3 Phillips Screwdriver or #3 Phillips Screw Socket Bit
- 13mm Socket
- Drill or cutting tools for plastic

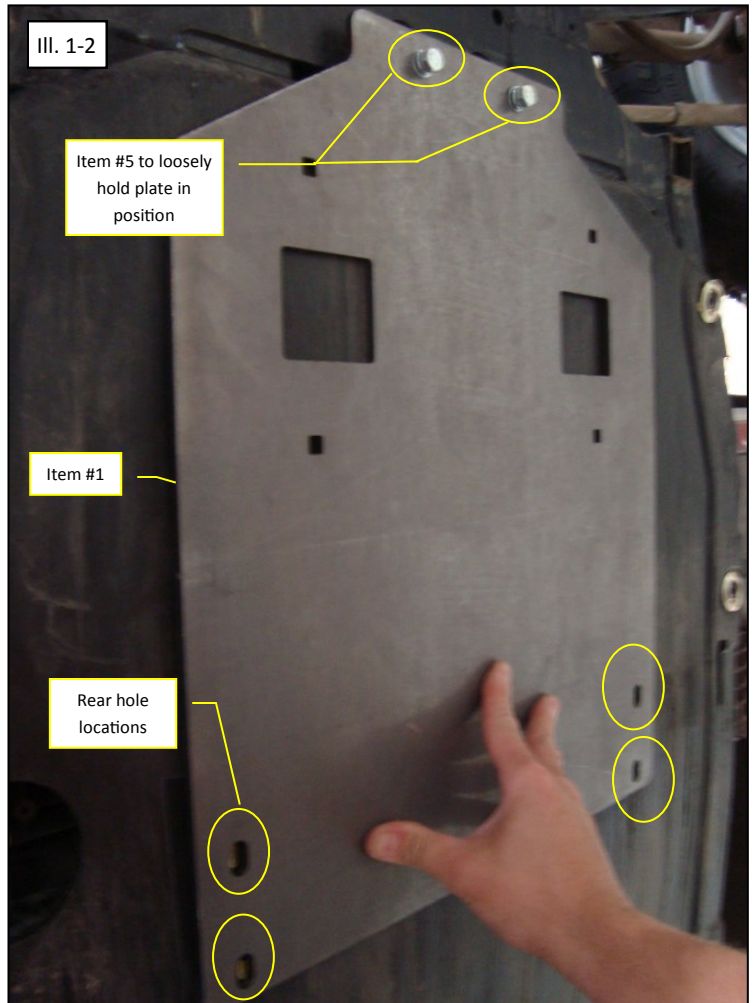
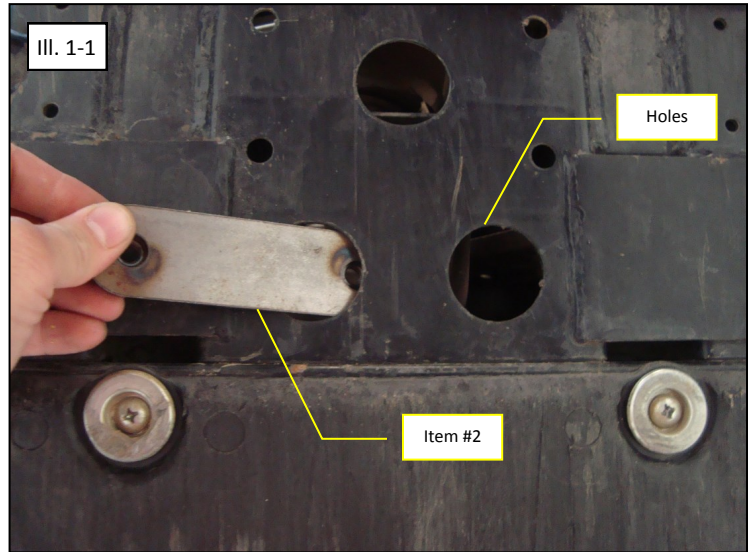
APPROXIMATE ASSEMBLY TIME: 30 minutes

Note: Removal and modification of the plastic skid plate is recommended.

Note: If any hardware is missing, do not return to the store. Call us to help, Toll Free 1-877-956-5746.

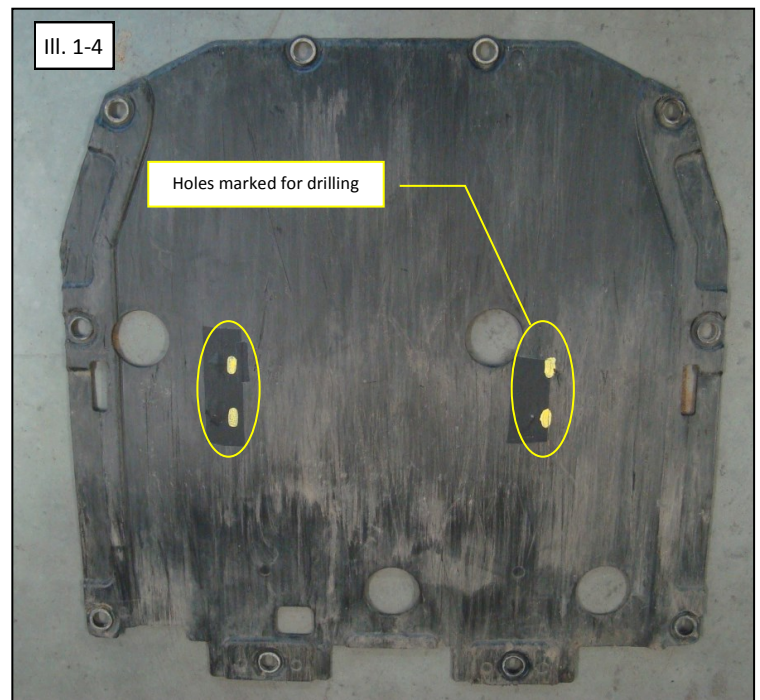
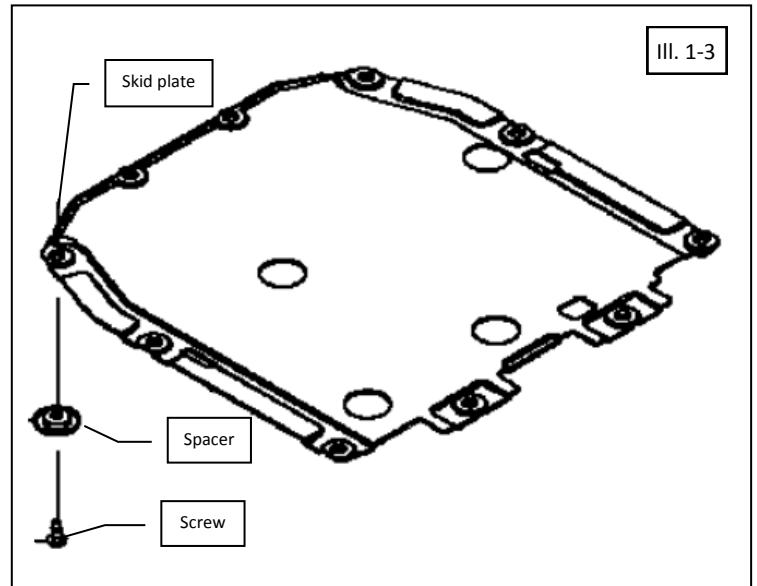
Installation Prep:

1. From the vehicle underside, insert the spacer nut bracket, item #2, thru the holes in the front frame as shown. (See Illustration 1-1).
2. Use the mount plate, item #1, as a pattern to mark the rear mounting holes into the plastic skid plate. Align the two front mounting holes with the nut bracket and loosely fasten plate to vehicle with M8 bolts, item #5, as shown. Then scribe or mark the rear hole locations into the plastic skid plate. (See Illustration 1-2).



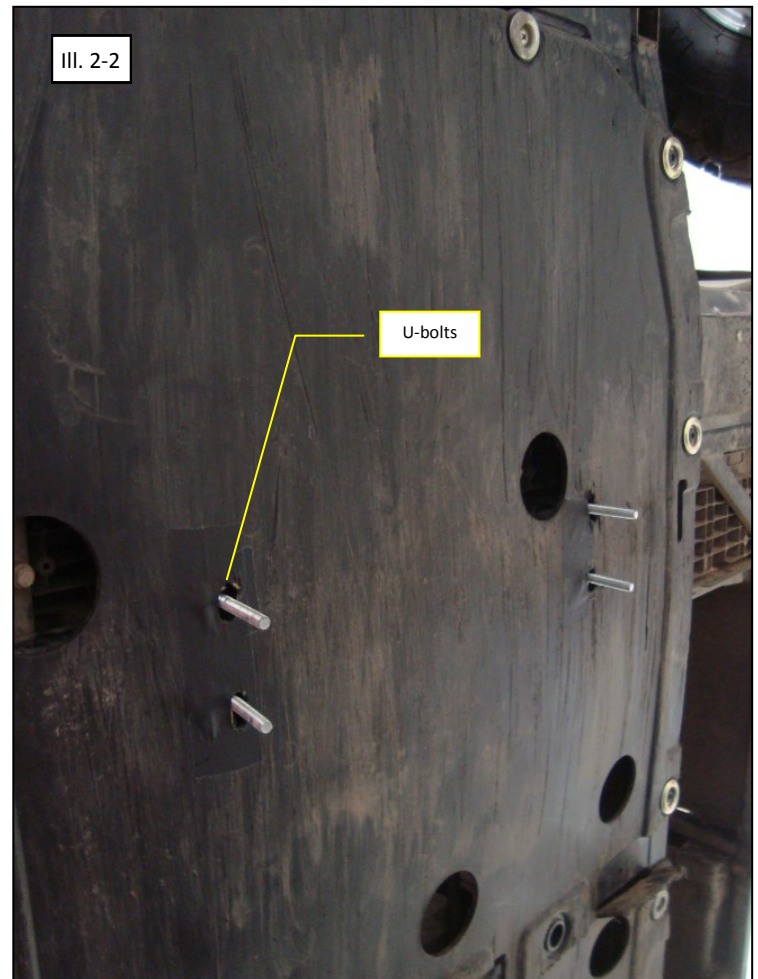
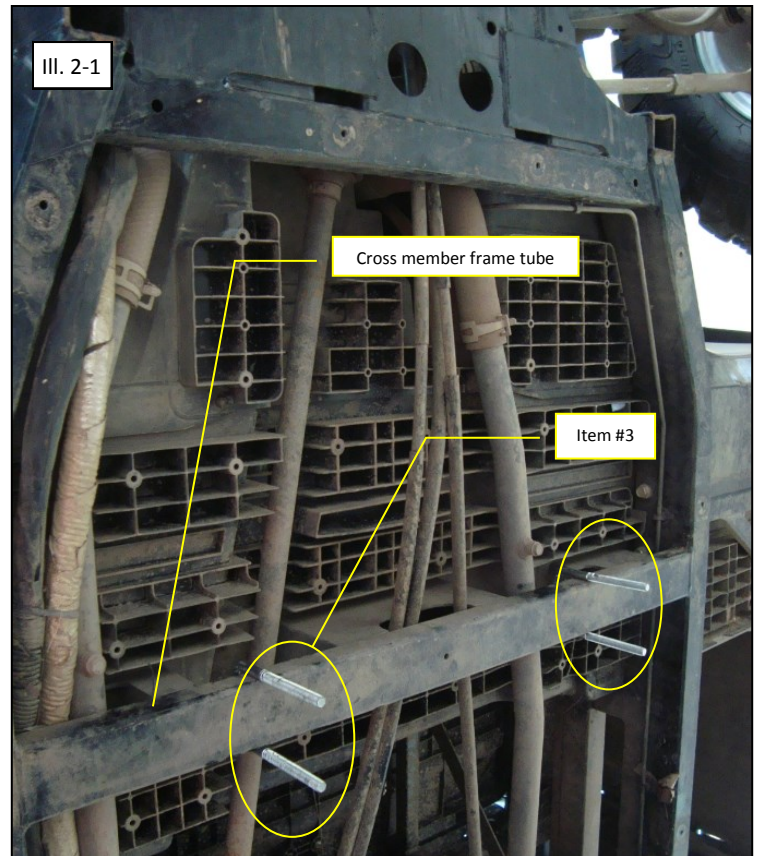
Installation Prep (continued):

3. Detach the plastic skid plate from the vehicle by removing the ten OEM screws as shown and save for re-install later. (See Illustration 1-3).
4. Drill holes through the skid plate at locations marked. Use a 3/8" to 1/2" bit to create an oversized hole that will allow some relief when installing hardware. *Note, a high speed cutting tool (like a Dremel) with a cutting bit will also work. (See Illustration 1-4).*



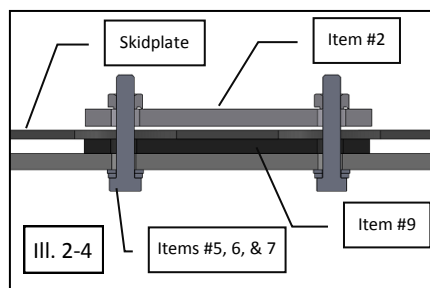
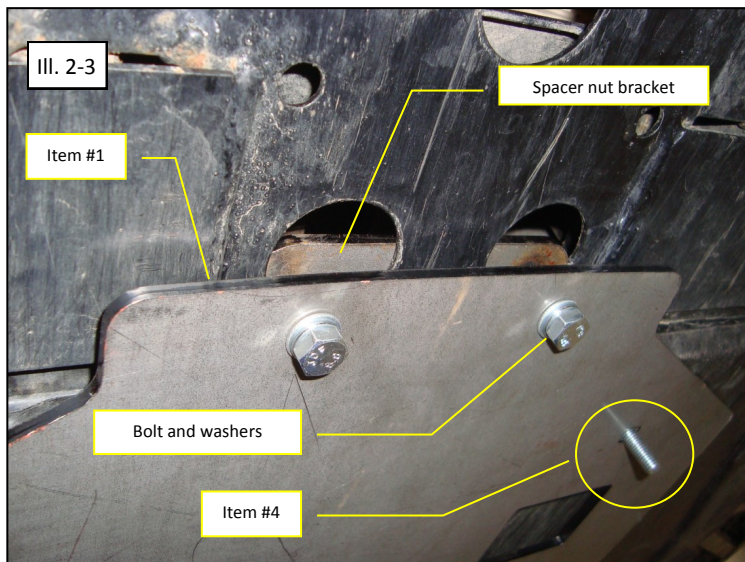
Mount Plate Installation:


1. Insert the square u-bolts, item #3, around the cross member frame tube as shown. (See Illustration 2-1).
2. Re-install the plastic skid plate onto vehicle and position square u-bolts thru the drilled out sections as shown. (See Illustration 2-2).

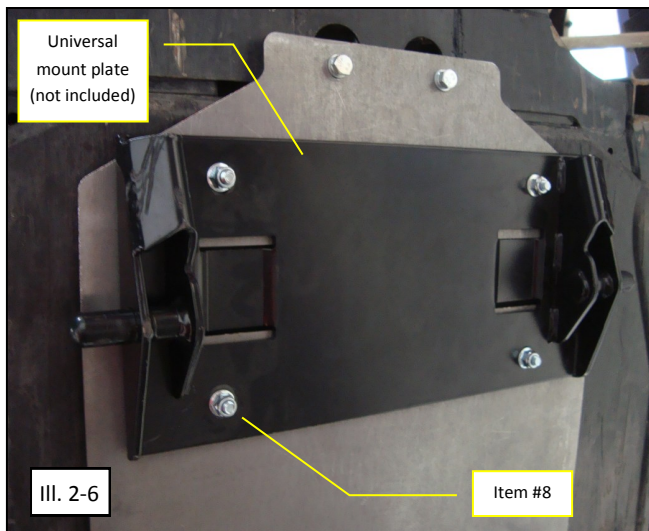
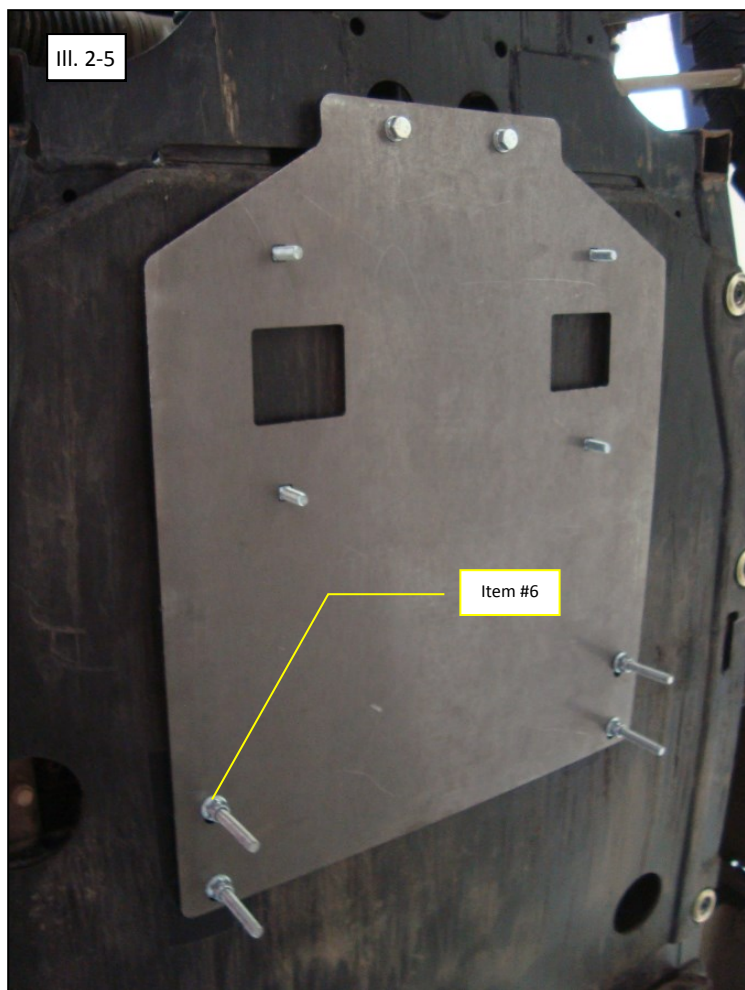


Mount Plate Installation (continued):

3. Insert hex bolt, item #5, thru the lock washer, item #6, and then thru the flat washer, item #7. Position the spacer plate, item #9, in between the mount plate and metal skid plate. Loosely fasten the mount plate, item #1, to the spacer nut bracket using the bolt assemblies as shown. Do not tighten fasteners at this step. Insert the M8 carriage bolts, item #4, thru the mount plate. (See Illustration 2-3 and 2-4).
4. Position the rear of the mount plate onto the u-bolts and fasten with M8 nuts, item #6. Tighten all fasteners. Do not overtighten. The excess threads can be trimmed, but leave 3-4 threads exposed past the locknut. (See Illustration 2-5).
5. The universal mount plate, not included in kit, will be attached to the Mule Pro series mount plate as shown. The M8 carriage bolts will fasten universal plate with M8 locknuts, item #8. Tighten to specification. (See Illustration 2-6).



 = T
8MM FASTENER TORQUE:
17 ft. lbs. (23 Nm)





One Year Limited Warranty

For the period of one (1) year from the purchase date, Kolpin will replace for the original purchaser, free of charge, any part or parts found upon examination by Kolpin to be defective in material, workmanship, or both.

All transportation costs incurred submitting product to Kolpin for warranty consideration must be borne by the purchaser. If Kolpin determines that the product must be returned to the factory for credit, please call 1-877-956-5746 for a Return Merchandise Authorization (RMA) number and shipping instructions.

This warranty does not apply to parts that have been damaged by accident, alteration, abuse, improper maintenance, normal wear, or other causes beyond the manufacturer's control. In order to protect you and your ATV, certain parts of the plow system and/or hardware are designed to fail when the equipment is over-stressed. Parts that are lost due to loosening and improper maintenance are not covered under warranty.

Peripheral products such as engines, electric motors, and actuators may carry an original manufacturer's warranty. Most hardware is general in nature and is easily obtained locally. Be sure to replace with minimum grade 5 specification.

Kolpin Outdoors, Inc.

Telephone: (763)-478-5800

Toll Free: (877)-956-5746

Fax Number: (800)-245-7569

www.kolpinpowersports.com

customerservice@kolpin.com