



# PLOW MOUNT KIT

FOR KAWASAKI MULE

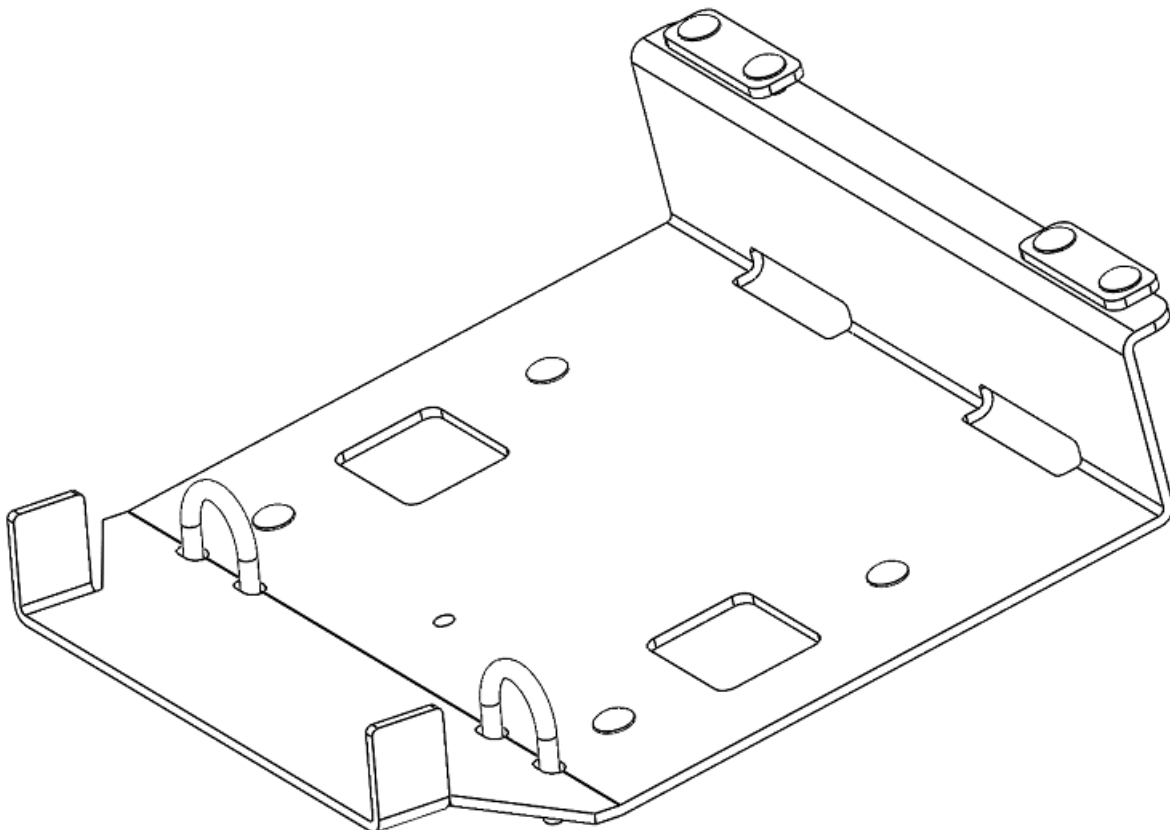
P/N 34-2030

ASSEMBLY / OWNERS MANUAL

Application

PLOW PUSH FRAME NO. 34-0000 or 34-0070

Before you begin, please read these instructions and check to be sure all parts and tools are accounted for. The following instructions contain details required to install and service the contents of this kit.



## OPERATING INSTRUCTIONS

Congratulations! You've just purchased the most durable plow component in the industry. Kolpin plow components work great for summer or winter plowing. With proper care and maintenance, your Kolpin plow system will last for years to come!

<b>NOTICE</b>
<b>Plow operation requires additional components for operation: <i>Kolpin Plow Blade, Kolpin Plow Push Frame, High Rise Plow Push Frame, Winch Kit *</i></b>
<i>*These components may be specific to your vehicle.</i>



Please read and understand all assembly instructions, notices and warnings before assembling and operating your Kolpin plow system.

### Follow these guidelines to ensure satisfactory operation:

- Read this manual and your ATV/ UTV operators manual before use.
- Periodically check for wear and tightness of all fasteners. Replace or re-torque fasteners as necessary.
- Before first use, set plow in the furthest right or left angled position to check for interference with the vehicle.
- Operate with extreme caution on slopes and rough terrain. Be familiar with the area before you plow.
- Be aware of immovable objects that could be hidden in the area you are plowing.
- To avoid damage when pushing snow into a pile, reverse direction before raising the plow blade.
- Do not ram the plow blade into piles of snow.
- For best results, set the suspension preload of your ATV/ UTV to the stiffest setting.
- To reduce steering effort and increase mobility, set the air pressure of your tires to the maximum pressure specification.
- The plow skids are adjustable. General skid setting is even with the plow wear bar bottom edge, higher settings reduce the chance of rocks and gravel from being collected.
- To increase traction during plow operation, operators can try: Securing weight to the ATV/ UTV for additional tire downforce, reducing tire air pressure, or installing tire chains.

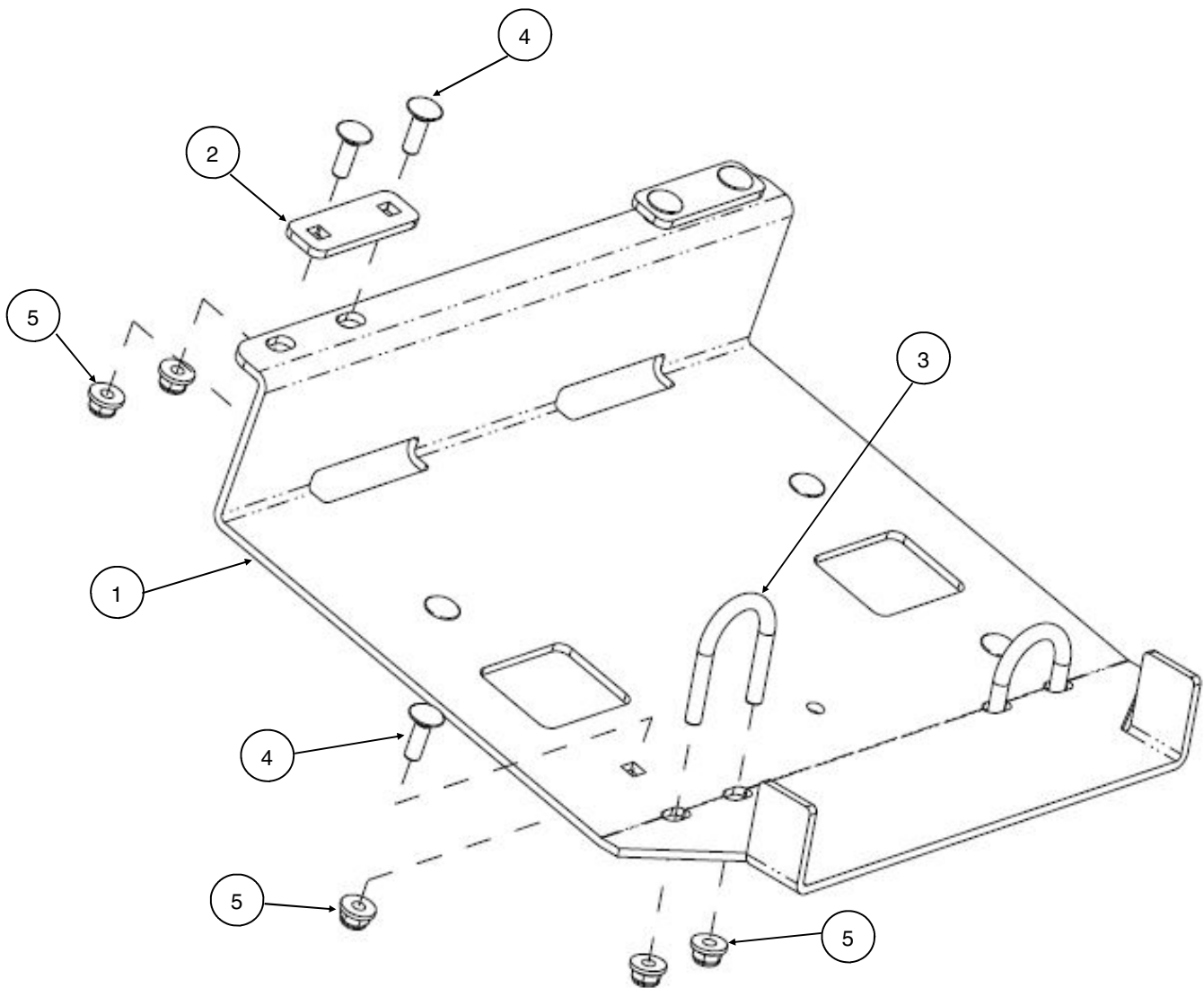
## SAFETY INFORMATION

Our plow systems were designed with your safety in mind. Please read and understand all Cautions, Notices and Warnings in this manual before you begin. In order to protect you and your ATV/UTV, certain parts of the plow system and/or hardware are designed to fail when the equipment is over-stressed.

 <b>DANGER</b> 
<b>TO AVOID SERIOUS INJURY OR DEATH:</b>
1. <b>DO NOT EXCEED 5 MPH (8 KMH) WITH BLADE INSTALLED.</b>
2. <b>OPERATE WITH EXTREME CAUTION ON SLOPES, STEEP GRADES, AND ROUGH TERRAIN.</b>
3. <b>ALLOW NO RIDERS ON BLADE OR ATV/UTV WHILE MOVING OR STATIONARY.</b>
4. <b>KEEP BYSTANDERS AWAY FROM THE BLADE OR ATV/UTV WHILE MOVING OR STATIONARY.</b>
5. <b>WHEN PUSHING HEAVY MATERIAL, DIRECTION CONTROL MAY BECOME DIFFICULT.</b>
6. <b>BEFORE ADJUSTING BLADE: STOP ATV/UTV ENGINE; SET AND LOCK BRAKES; RAISE AND LOCK BLADE IN UP POSITION. DO NOT ATTEMPT TO RAISE BLADE BY HAND; USE THE LIFT MECHANISM ONLY.</b>
7. <b>LOWER BLADE TO DOWN POSITION WHEN BLADE AND ATV/UTV ARE NOT IN USE.</b>
8. <b>READ BLADE'S INSTRUCTION SHEETS AND ATV/UTV OWNER MANUAL.</b>

## Kit Contents:

Item	Qty	Part Description	Part Number
1	1	Mule Mount Plate	-
2	2	Rear Fix Plate	-
3	2	U-Bolt, Zinc Plated, M8-1.25 x 34mm x 61mm	-
4	8	Carriage Bolt, Zinc Plated, M8-1.25 x 25mm LG	-
5	12	Flange Locknut, Zinc Plated, M8-1.25	-
6	1	Instruction Guide (not shown)	-



## BEFORE YOU BEGIN:

- Your Kolpin accessory is exclusively designed for your vehicle
- Please read and understand all instructions
- Verify all parts and tools are accounted for
- To ensure a satisfactory installation, follow all steps correctly and in the sequence described
- Keep these instructions for future reference or for informational requests
- To facilitate installation, make sure that your vehicle is clean and free of debris
- All directions referring to right and left are when the rider is sitting on the machine
- The plastic skid plate will need to be modified to be reinstalled on the vehicle

## TOOLS REQUIRED:

- 13mm Socket
- Drill or cutting tools for plastic

## APPROXIMATE ASSEMBLY TIME: 30 minutes

Note: Removal of the plastic skid plate is optional for modification.

Note: If any hardware is missing, do not return to the store. Call us to help, Toll Free 1-877-956-5746.

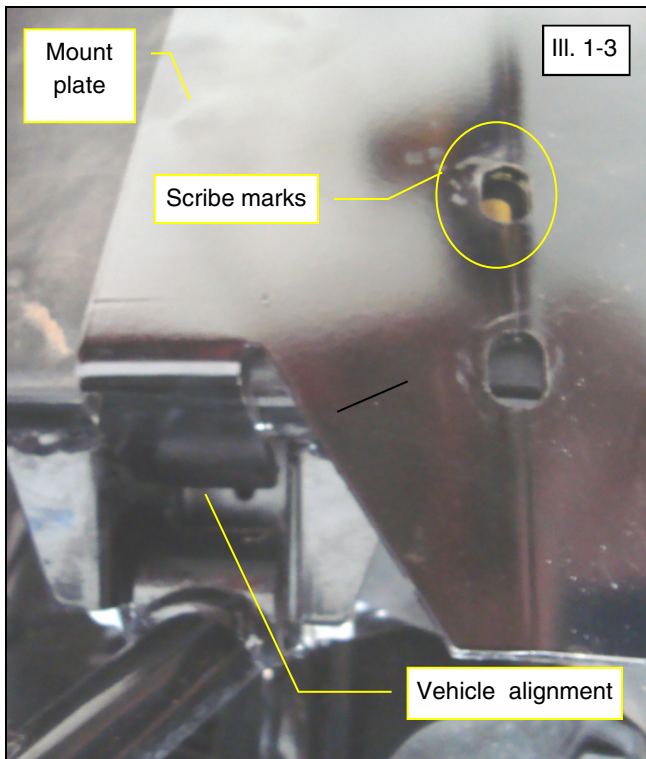
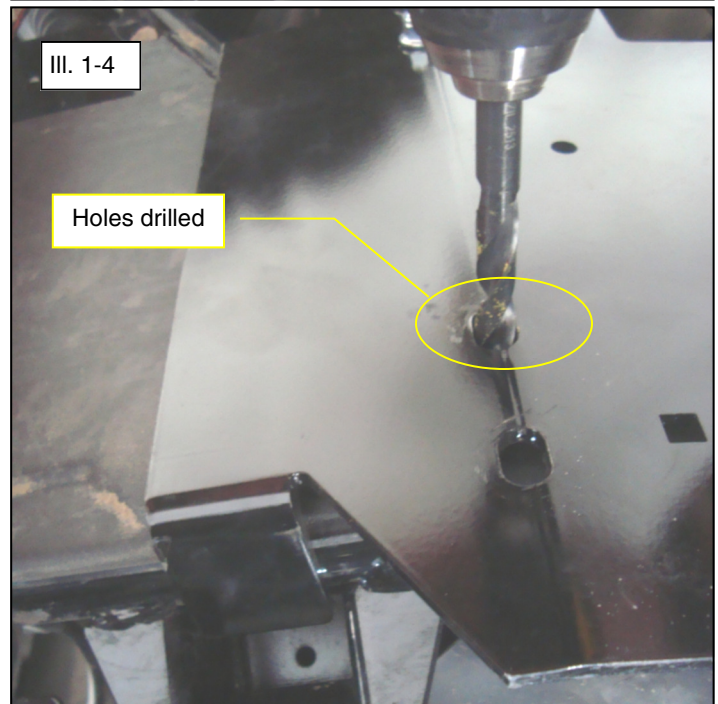
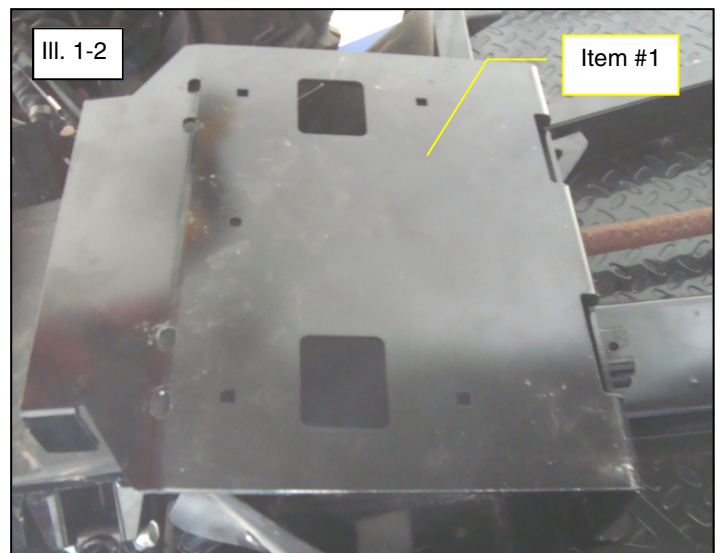
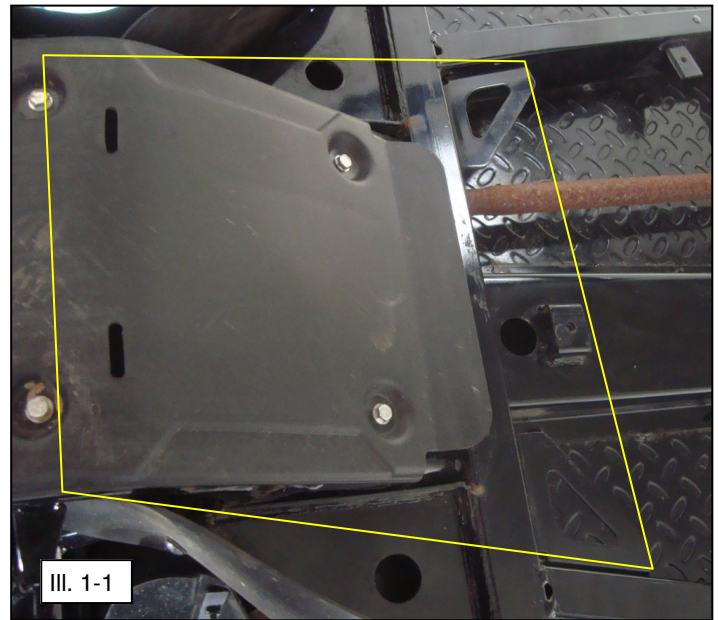
<b>SPARE KITS</b>		<b>Hardware kit P/N 34-0011</b>
<b>Item</b>	<b>Description</b>	
3	Round U-Bolt, Zinc Plated, M8-1.25 x 65mm	2x
4	Carriage Bolt, Zinc Plated, M8-1.25 x 25mm LG	8x
5	Flange Locknut, Zinc Plated, M8-1.25	12x
-	Hex Locknut, Zinc Plated, M8-1.25	4x
-	Spring Lock Washer, Zinc Plated, M8	2x
-	Flat Washer, Zinc Plated, M8	4x
-	Hex Bolt, Zinc Plated, M8-1.25 35mm LG	2x
-	Hex Bolt, Zinc Plated, M8-1.25 90mm LG	2x
-	Hex Bolt, Zinc Plated, M8-1.25 80mm LG	2x
-	Hex Bolt, Zinc Plated, M10-1.5 x 25mm LG	4x
-	Spring Lock Washer, Zinc Plated, M10	4x
-	Flat Washer, Zinc Plated, M10	4x

### Spare Kit Notes:

- Spare kits may contain extra hardware that is used for other mount kits. Extra hardware can be discarded.
- U-bolts supplied in spare kits may be longer than original and may need to be cut to size.

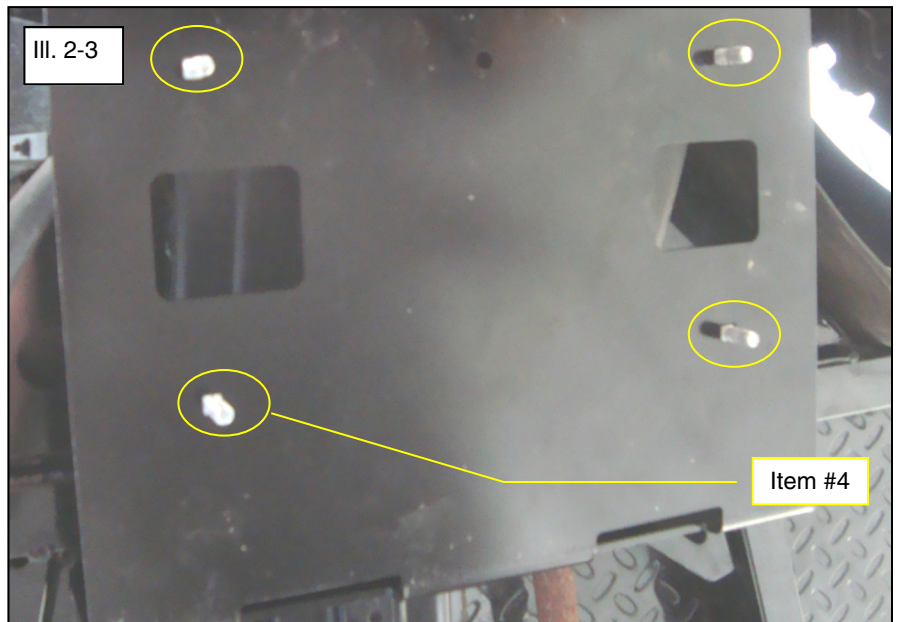
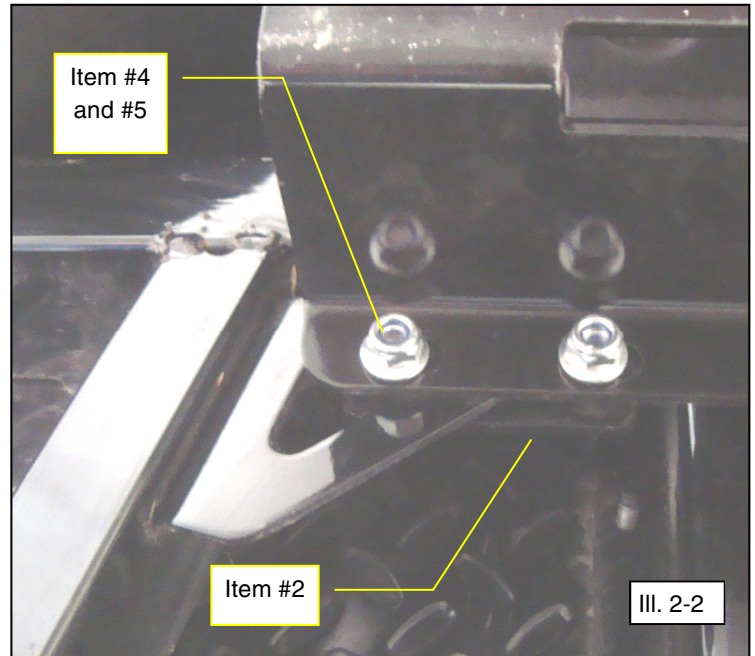
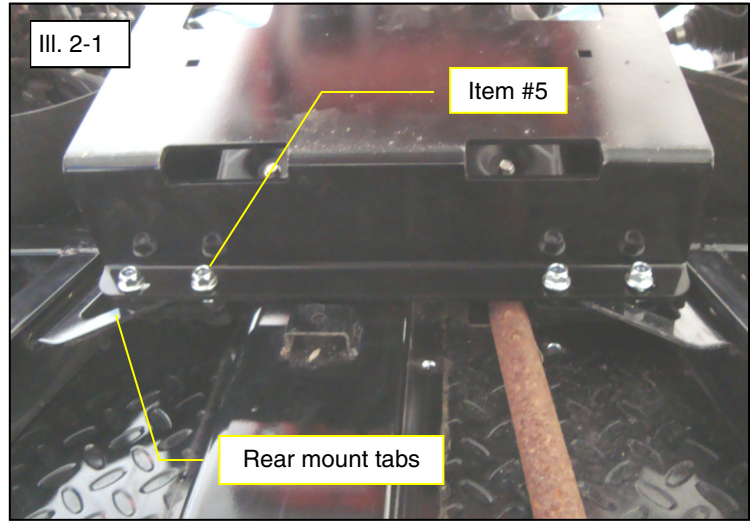
### Installation Prep:

1. Use the mount plate, item 1, as a pattern to mark the front mounting holes into the plastic skid plate. Position the mount plate under the vehicle in the area shown. (See Illustration 1-1 and 1-2).
2. Align the mount plate front tabs with the vehicle mounting tabs and then scribe or mark the front hole locations as shown on each side. (See Illustration 1-3).
3. Drill holes through the skid plate at locations marked. Use a 3/8" to 1/2" bit to create an oversized hole that will allow some relief when installing hardware. **Note, a high speed cutting tool (like a Dremel) with a cutting bit will also work. (See Illustration 1-4). Note, use caution to only drill thru plastic skid plate.**
4. **Note, as an optional step, the plastic skid plate can be detached from the vehicle for ease of modification.**



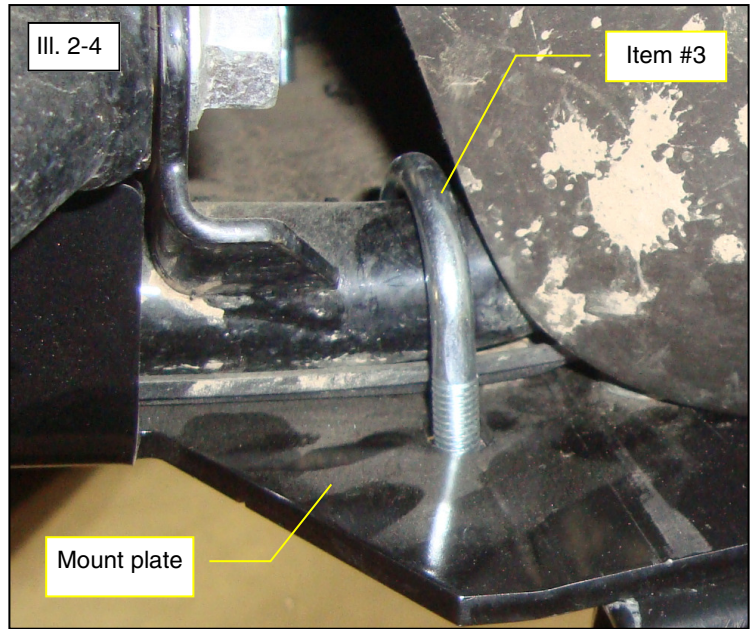
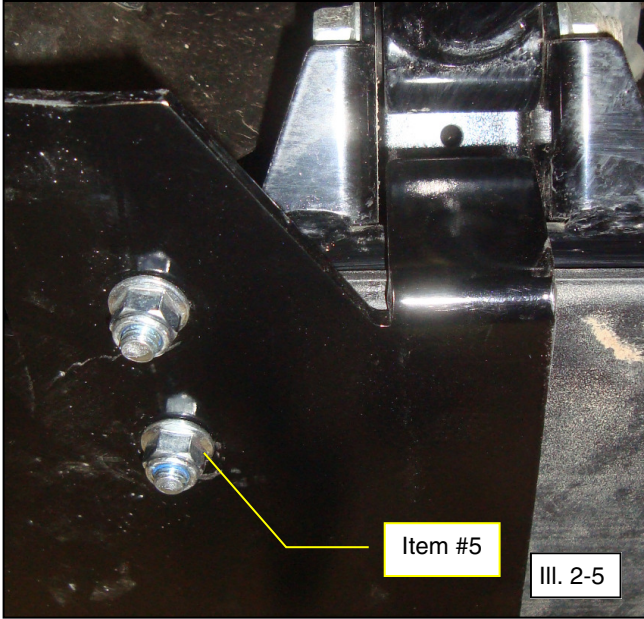
**Mount Plate Installation:**

1. Insert the carriage bolts, item 4, thru the rear fix plates, item 2, and thru the rear mount tabs as shown. Fasten the mount plate to vehicle using M8 locknuts, item 4. Do not tighten at this step. (See Illustration 2-1 and 2-2).
2. Insert the four M8 carriage bolts, item 4, thru the mount plate as shown. (See Illustration 2-3).

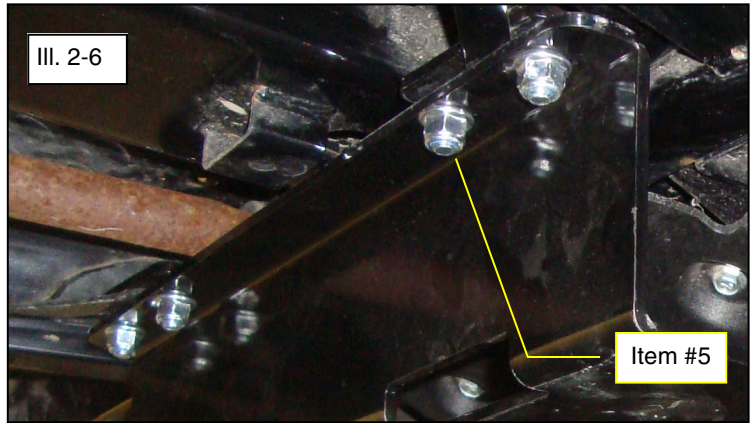


**Mount Plate Installation (continued):**

- Place the u-bolt, item 3, around the frame and thru the plastic skid plate and mount plate. Fasten the u-bolts with M8 locknuts, item 5 and tighten. Do not overtighten. (See Illustration 2-4 and 2-5).



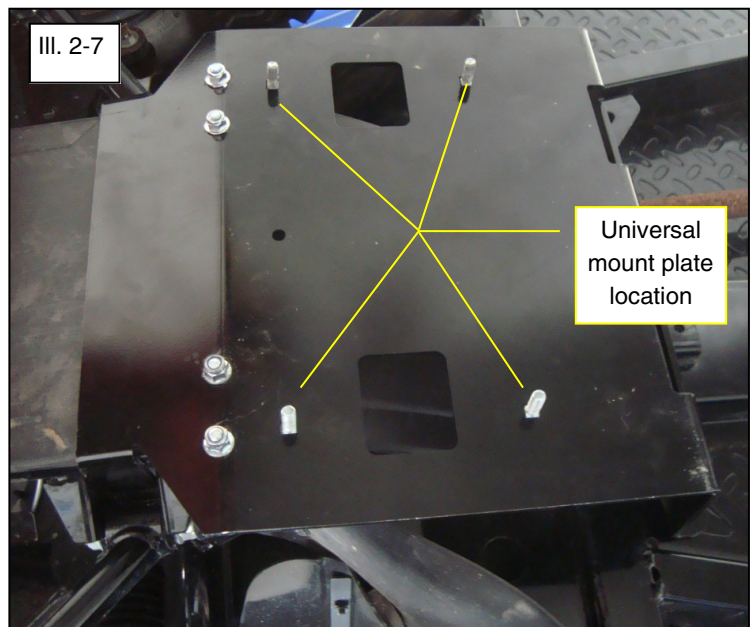
- Secure the rear of the mount plate to vehicle by tightening locknuts, item #5, as shown. Tighten to specification. (See Illustration 2-6).



= T
<b>8MM FASTENER TORQUE:</b> 17 ft. lbs. (23 Nm)

- The universal mount plate, not included in kit, will be attached to the Mule mount plate as shown. The M8 carriage bolts will fasten universal plate with M8 locknuts, item #5. Tighten to specification. (See Illustration 2-7).

= T
<b>8MM FASTENER TORQUE:</b> 17 ft. lbs. (23 Nm)





## **One Year Limited Warranty**

For the period of one (1) year from the purchase date, Kolpin will replace for the original purchaser, free of charge, any part or parts found upon examination by Kolpin to be defective in material, workmanship, or both.

All transportation costs incurred submitting product to Kolpin for warranty consideration must be borne by the purchaser. If Kolpin determines that the product must be returned to the factory for credit, please call 1-877-956-5746 for a Return Merchandise Authorization (RMA) number and shipping instructions.

This warranty does not apply to parts that have been damaged by accident, alteration, abuse, improper maintenance, normal wear, or other causes beyond the manufacturer's control. In order to protect you and your ATV, certain parts of the plow system and/or hardware are designed to fail when the equipment is over-stressed. Parts that are lost due to loosening and improper maintenance are not covered under warranty. This warranty does not cover removal or reinstallation labor fees of the plow system and related components.

Peripheral products such as engines, electric motors, and actuators may carry an original manufacturer's warranty. Most hardware is general in nature and is easily obtained locally. Be sure to replace with minimum metric class 8.8 specification.

**Kolpin Outdoors, Inc.**

**Telephone: (763)-478-5800**

**Toll Free: (877)-956-5746**

**Fax Number: (800)-245-7569**

**[www.kolpin.com](http://www.kolpin.com)**

**Email: [customerservice@kolpin.com](mailto:customerservice@kolpin.com)**