

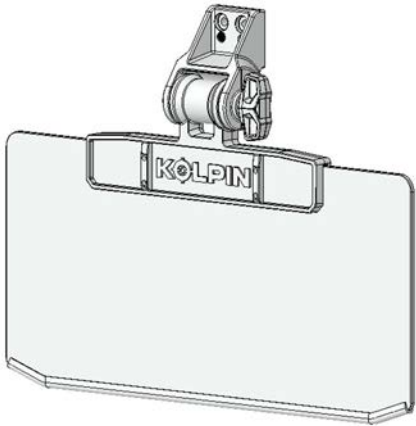
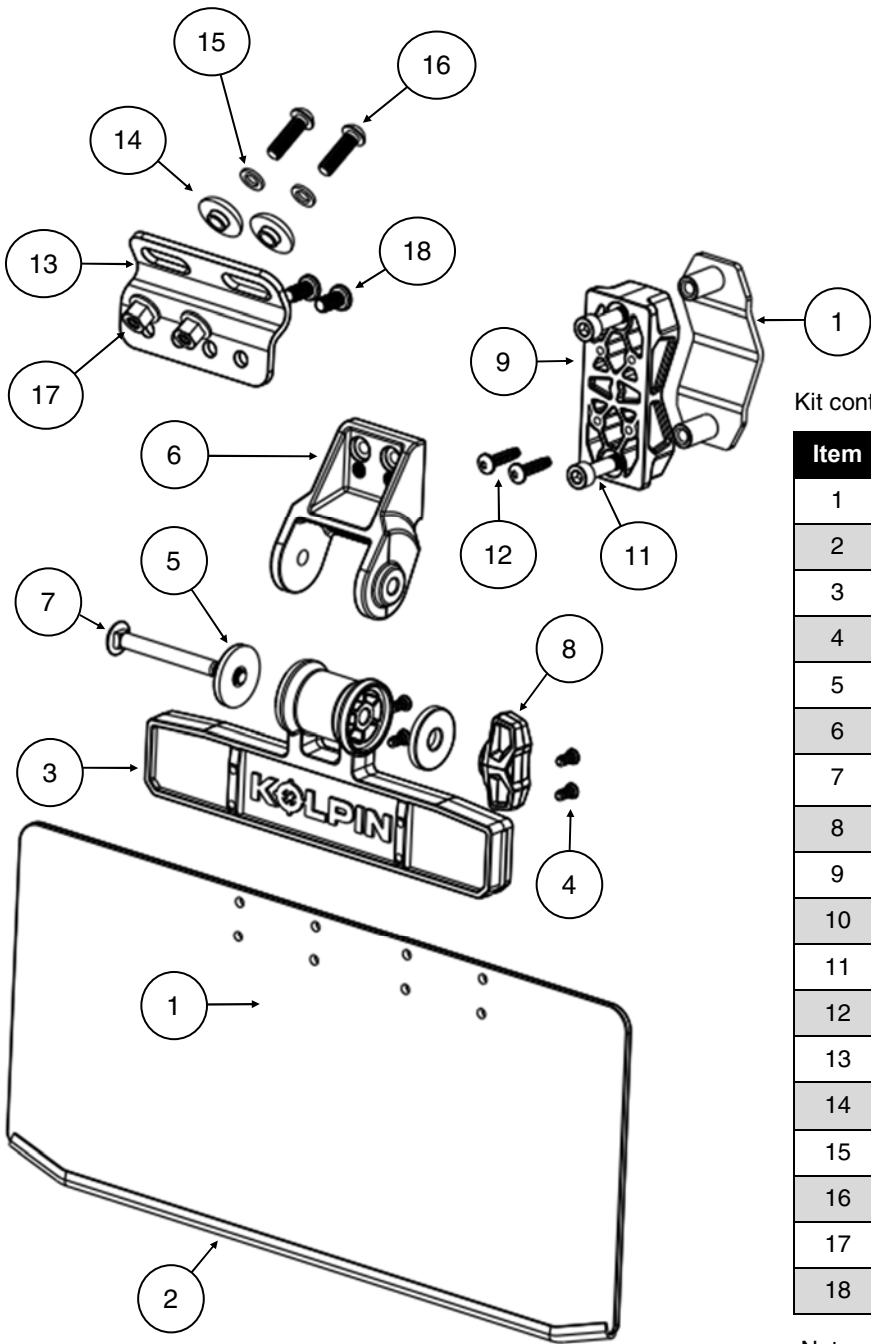
# UTV Sun Visor



## Product Instructions | Part No: 98700

Before you begin, read these instructions and check to be sure all parts and tools are accounted for. Please retain these installation instructions for future reference and parts ordering information. **Note: If any hardware is missing, do not return to the store. Call us to help, Toll Free 1-877-956-5746.**

Items 1-8 will be Pre-assembled



Kit contents:

Item	Qty	Part Description
1	2	Visor Panel
2	2	Rubber Trim Seal
3	2	Housing
4	8	Thread Forming Screw for Plastic Housing
5	4	Pivot Bushing
6	2	Clamp
7	2	Carriage Bolt, M6-1.0x 65mm
8	2	T- Knob
9	2	Bottom Tube Plastic Clamp
10	2	Top Tube Metal Clamp
11	4	Socket Screw, Zinc Plated, M6-1.0 x 40mm LG
12	4	Thread Forming Screw for Plastic Clamp
13	2	Universal Bracket
14	4	Domed Shoulder Washer, M6
15	4	Lock Washer, M6
16	4	Button Head Screw, M6-1.0x21mm
17	4	Flanged Nyloc Locknut, M6
18	4	Pan Screw, M6

Note:

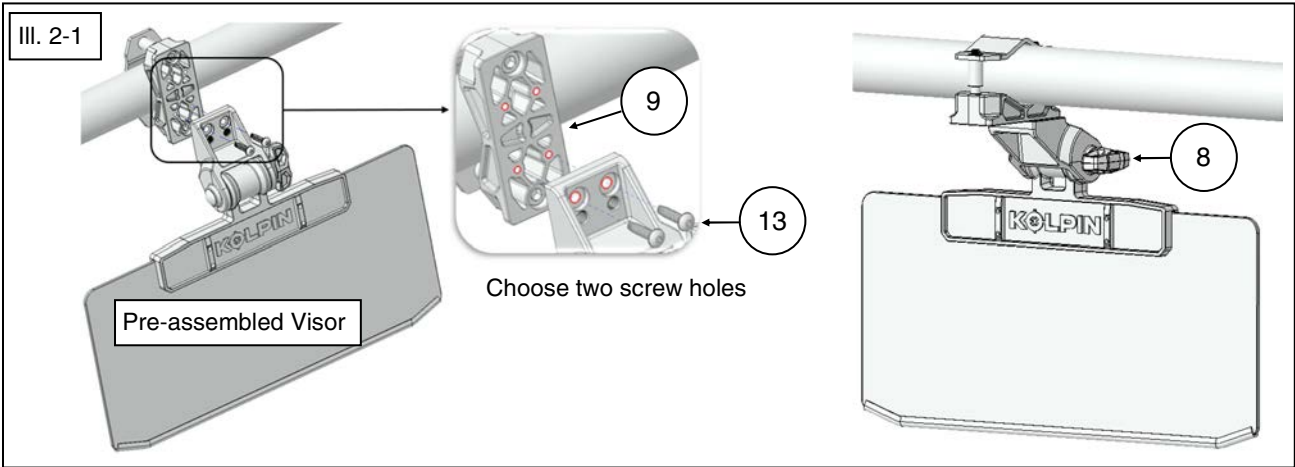
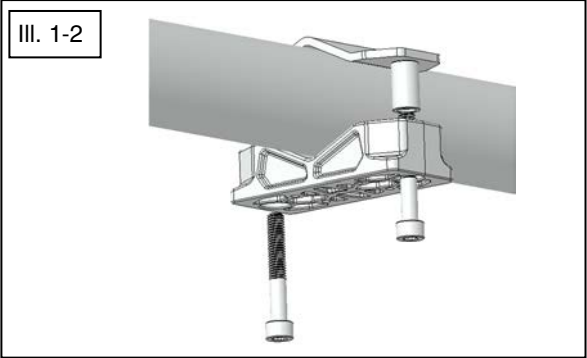
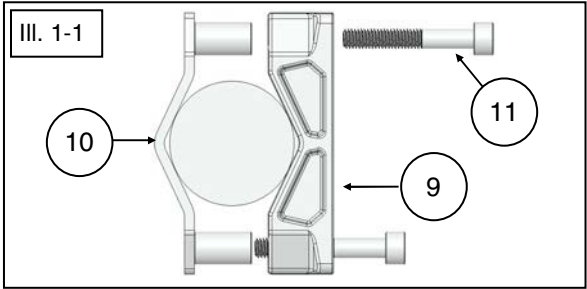
Kit Contains extra hardware that may not be used for all installations. Extra hardware can be discarded.

Visor Installation Prep:

- 1. Remove the visor assemblies from packaging. Verify that the visors are in good condition and that all the hardware is present. Items 1-8 will be pre-assembled. The visor kit includes extra clamps to fit various tube shapes/sizes and not all hardware will be used depending on application.

Visor Installation - Round Tubing

- 1. Clamp and fasten the assembled Visor onto the vehicle in desired location. For installing onto round tubing, use the bottom plastic clamp (item #9) with the top metal clamp (item #10) and fasten with socket screws (item #11). Position the top metal clamp (item #10) around the tube, then assemble the bottom plastic clamp (item #9) onto the tube and fasten together with socket screws (item #11) as shown. (See illustrations 1-1 and 1-2). **Note, the plastic clamp can be orientated vertically or horizontally as shown.**
- 2. Attach the Pre-assembled Visor (items 1-8) to the bottom plastic clamp (item #9) using the two thread forming screws (item #13) as shown. (See illustration 2-1). **Note, the Visor kit can be positioned onto the plastic clamp in multiple orientations.**

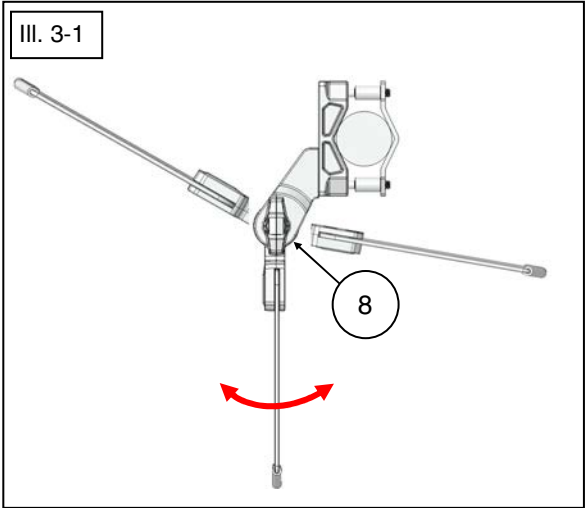


- 3. Tighten the screws to specified torque setting. **WARNING:** Do not over tighten hardware or damage can occur.

Torque Charts

Item	N*m	in*lbf
11	4.75	42
13	1.4	12.4

- 4. Position visor to desired viewing angle by loosening (turn counter-clockwise) T-Knob (item # 8) and then tighten (turn clockwise) to secure into position as shown (See illustration 3-1). **Note, if the T-Knob (item #8) is loosen too much the visor rotate itself. Make note to support visor while making adjustments.**

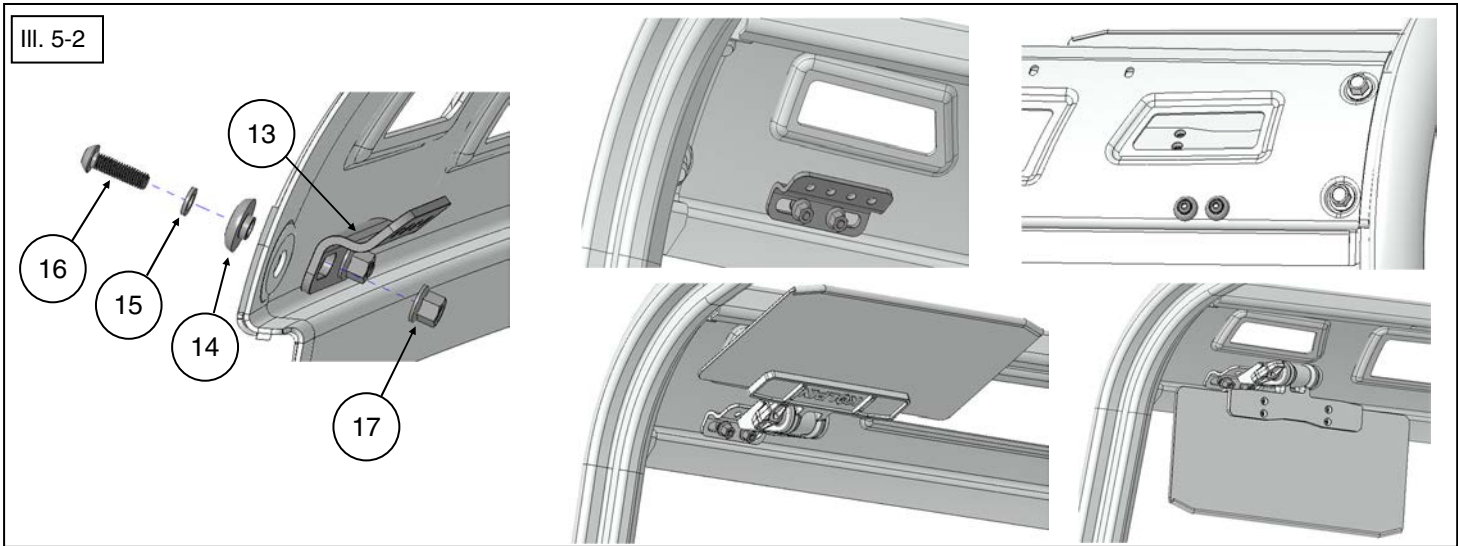
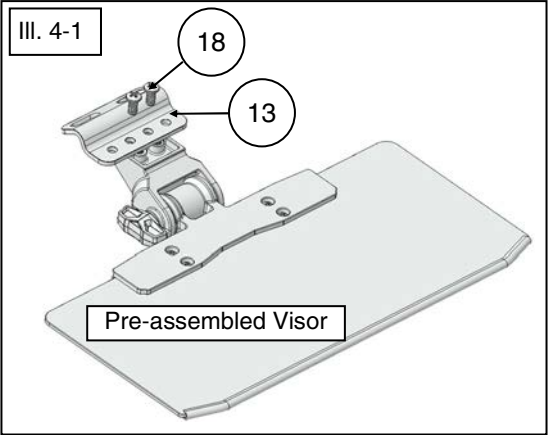


Visor Installation Prep - Polaris RANGER / CAN-AM Defender / CF Moto Uforce

1. Before you begin: If your vehicle is equipped with roof and/or roof liner (front-side), remove from vehicle to complete visor installation. Refer to the OEM instructions for how to remove these items.

Visor Installation - Polaris RANGER / CAN-AM Defender / CF Moto Uforce

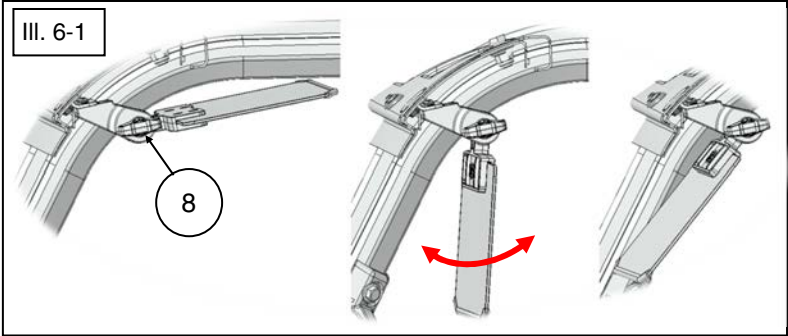
1. Mount the universal bracket (item #13) on the pre-assembled visor mount using two screws (item #18) as shown. (See illustration 4-1). **Note: Tighten the screws to specified torque setting. WARNING: Do not over tighten hardware or damage can occur.**
2. Mount the bracket on ROPS (Roll Over Protection System) upper windshield mount using two screws (item #16), domed shoulder washers (item #14), lock washers (item #15) and locknuts (item #17) as shown. (See illustration 5-1 and 5-2). **Note: Make sure to install screws from top of ROPS upper bracket and under the roof.**



Torque Charts

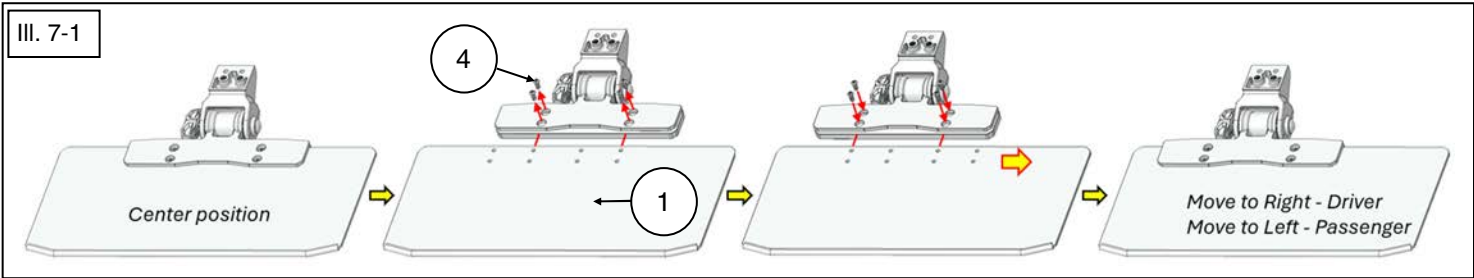
Item	N*m	in*lb
16	4.75	42
18	4.75	42

- Position visor to desired viewing angle by loosening (turn counter-clockwise) T-Knob (item # 8) and then tighten (turn clockwise) to secure into position as shown (See illustration 6-1). **Note, if the T-Knob (item #8) is loosen too much the Visor rotate itself. Make note to support visor while making adjustments.**



### Adjustable Visor Panel

- Remove four thread forming screws (item #4) and remove the visor panel (item #1) from clamp. Move the visor panel to right (Driver side) or to left (Passenger side) and install using four thread forming screws as shown. (See illustration 7-1).



- Tighten the screws to specified torque setting. **WARNING:** Do not over tighten hardware or damage can occur.

#### Torque Charts

Item	N*m	in*lb
4	2.8	24.8

### Use and Care Information:

- Check the accessory mounts frequently and retighten if necessary.
- Replace this accessory with a new one if it is damaged or discolored excessively.
- When this accessory becomes dirty, rinse it thoroughly with cool water to remove loose dirt, then wipe with a clean cloth or sponge. Never use petroleum solvents such as gasoline, thinner, benzene, acid or alkaline cleaners.
- Visor is not intended for on-road use.

For additional assistance, please contact Kolpin technical service department at (877) 956-5746 or (763) 478-5800 or email [customerservice@kolpin.com](mailto:customerservice@kolpin.com)

### One Year Limited Warranty

For the period of one (1) year from the purchase date, Kolpin will replace for the original purchaser, free of charge, any part or parts found upon examination by Kolpin to be defective in material, workmanship, or both.

All transportation costs incurred submitting product to Kolpin for warranty consideration must be borne by the purchaser. If Kolpin determines that the product must be returned to the factory for credit, please call 1-877-956-5746 for a Return Merchandise Authorization (RMA) number and shipping instructions.

This warranty does not apply to parts that have been damaged by accident, alteration, abuse, improper maintenance, normal wear, or other causes beyond the manufacturer’s control. In order to protect you and your ATV, certain parts of the accessory system and/or hardware are designed to fail when the equipment is over-stressed. Parts that are lost due to loosening and improper maintenance are not covered under warranty. This warranty does not cover removal or reinstallation labor fees of the plow system and related components.

Peripheral products such as engines, electric motors, and actuators may carry an original manufacturer’s warranty. Most hardware is general in nature and is easily obtained locally. Be sure to replace with minimum metric class 8.8 specification.