

# STAGE 2 CAMSHAFT KIT



P/N 2884573; 2885178

## BEFORE YOU BEGIN

Read these instructions and check to be sure all parts and tools are accounted for. Please retain these installation instructions for future reference and parts ordering information.

### IMPORTANT

Due to the technical nature of this kit, Indian Motorcycle® insists that this installation be performed by a certified Indian Motorcycle® technician.

### NOTICE

Factory approved and certified accessories and calibrations are designed for maximum performance, while protecting the engine over a wide range of operating conditions. Use of aftermarket or unapproved accessories or calibrations will cause abnormal sensor or engine operation, error codes and risks damage to the engine. The Indian Motorcycle® Limited Warranty excludes damages or failures resulting from use of aftermarket or unapproved components, accessories, and calibrations.

## APPLICATION

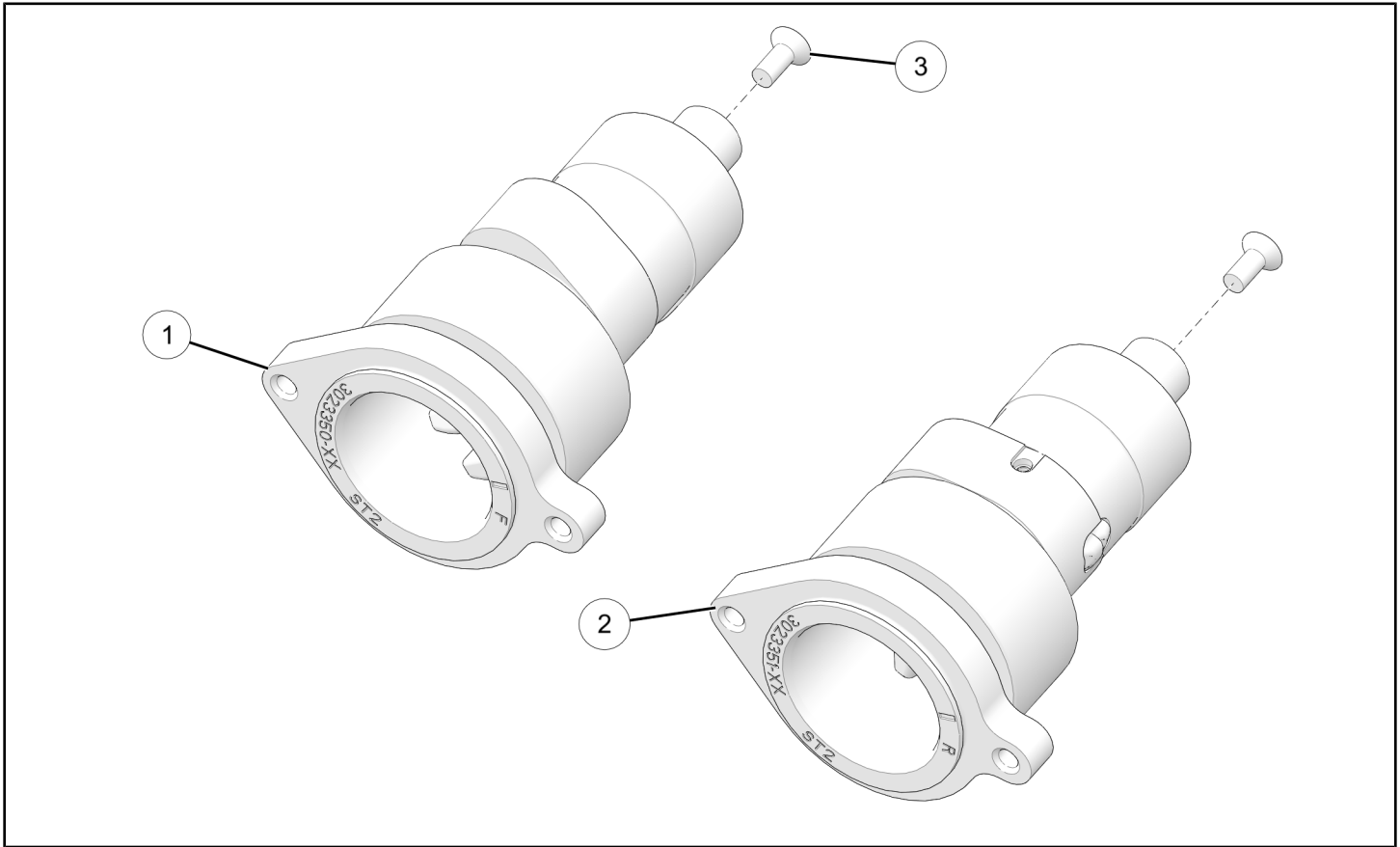
Verify accessory fitment at [www.indianmotorcycle.com](http://www.indianmotorcycle.com).

## REQUIRED SOLD SEPARATELY

Only parts for installation of the Indian Motorcycle® Stage 2 Camshaft Kit are included. For complete installation, the following additional kits are required (sold separately):

- *Power Plus Stage 1 Air Intake*: 2884491-XXX (California Only), or 2883737-XXX (49 State)
- *Stage 1 Slip-On Muffler Kit*: PN 2879529-XXX, 2879724-XXX, 2879768-XXX, 2879769-XXX, or 2884187-XXX

## KIT CONTENTS



REF	QTY	PART DESCRIPTION	P/N AVAILABLE SEPARATELY
1	1	Assembly, Camshaft, Stage 2, Front	3023350
2	1	Assembly, Camshaft, Stage 2, Rear	3023351
3	2	Thrust Plate Screw, Flat Countersunk Head, M5 X 0.8 X 12 mm	7517255
4	1	Calibration Card, 50-State (Not Shown)	4014490
5	1	Decal, CARB (Not Shown)	7300414
6	1	VCM 1, Gen2, V3 (Not Shown) (Kit P/N 2885178 only)	n/a

## TOOLS REQUIRED

- Safety Glasses
- Digital Wrench®
- Drain Pan
- Pick and Hook Set
- Platform Jack, Motorcycle
- Socket Set, Hex Bit, Metric
- Socket Set, Metric
- Socket Set, Torx® Bit
- Torque Wrench
- Wrench Set, Metric
- **Special Service Tool:**
  - Camshaft Service Tool, P/N PF-52939
  - Crankshaft Locking Pin, P/N PF-52135
- Service Manual

## CONSUMABLES REQUIRED

- Motor Oil, 15W-60, Full Synthetic, 5 qts. (4.7 l.)

## IMPORTANT

Your Indian Motorcycle® Stage 2 Camshaft Kit is exclusively designed for your vehicle. Please read the installation instructions thoroughly before beginning. Installation is easier if the vehicle is clean and free of debris. For your safety, and to ensure a satisfactory installation, perform all installation steps correctly in the sequence shown.

## INSTALLATION INSTRUCTIONS

### VEHICLE PREPARATION

#### GENERAL

1. Position motorcycle on a lift table and clamp front tire securely in a wheel vise.
2. Turn key or ignition switch to OFF position and remove key. If equipped with keyless fob, remove fob from proximity of vehicle.
3. Drain engine oil
4. Remove and set aside side covers, saddlebags, and seat. Removal procedures can be found in service manual.
5. Disconnect battery. Procedure can be found in service manual.

### ACCESSORY INSTALLATION

#### REMOVE STOCK CAMSHAFTS

1. Refer to Indian Motorcycle® service manual for camshaft removal procedure.

#### INSTALL NEW CAMSHAFTS

1. Refer to Indian Motorcycle® service manual for camshaft installation procedure.

#### IMPORTANT

- Replace thrust plate screws with new screws ③ during reassembly.
- Replace gaskets during reassembly with new gaskets from Stage 2 Gasket kit P/N 2209151

#### REPLACE VCM (KIT P/N 2885178 ONLY)

**MODEL YEAR 2020 ONLY. IF MODEL YEAR 2021 AND NEWER SKIP TO NEXT SECTION.**

1. Remove VCM 1. Procedure can be located in service manual.
2. Install new VCM 1 ⑥

### VEHICLE REASSEMBLY

#### GENERAL

1. Fill and check oil level. Procedure can be found in owner's manual.

2. Reconnect battery. Procedure can be found in owner's manual.
3. Reinstall saddlebags, seat, and side covers. Procedure can be found in owner's manual.

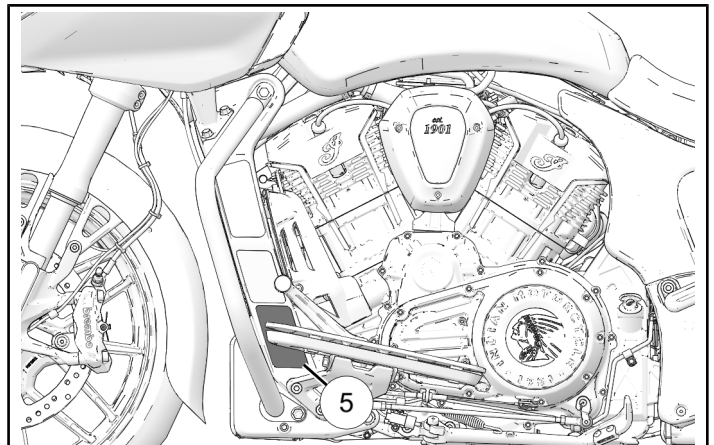
### APPLY LABEL AND UPDATE CONTROL MODULES

#### APPLY LABEL

1. Install aftermarket exemption label ⑤ required by California Air Resource Board (CARB). To determine if motorcycle is a 50-State model, look for a California EVAP label on left hand down-tube frame. If label is on frame, apply new CARB exemption label ⑤ on left hand down-tube frame underneath EVAP label as shown.

#### IMPORTANT

Product information label is required to aid in passing California Smog Check Program



#### REFLASH VCM 1

**Model Year 2020 only, model year 2021 and newer skip to next section.**

1. Perform vehicle control module update with Digital Wrench® **Auxiliary Controller Reprogramming** under the **Special Tests** menu.
2. Select **Challenger Vehicle Control Module 1** in the reprogramming menu. Select Continue button.
3. Perform reflash authorization, make sure to select **Challenger Vehicle Control Module 1** before proceeding.

## **UPDATE ECM**

1. Update ECM with new calibration software using included calibration card ④.

### **IMPORTANT**

This step must be completed by an Authorized Indian Motorcycle® Dealer. Do NOT operate vehicle until re-calibration of vehicle is complete.

## **INSTRUCTION FEEDBACK FORM**

A feedback form has been created for the installer to provide any comments, questions or concerns about the installation instructions. The form is viewable on mobile devices by scanning the QR code or by clicking [HERE](#) if viewing on a PC.

