

WINDSHIELD MOUNT SPOOL KIT



P/N 2884902-XXX

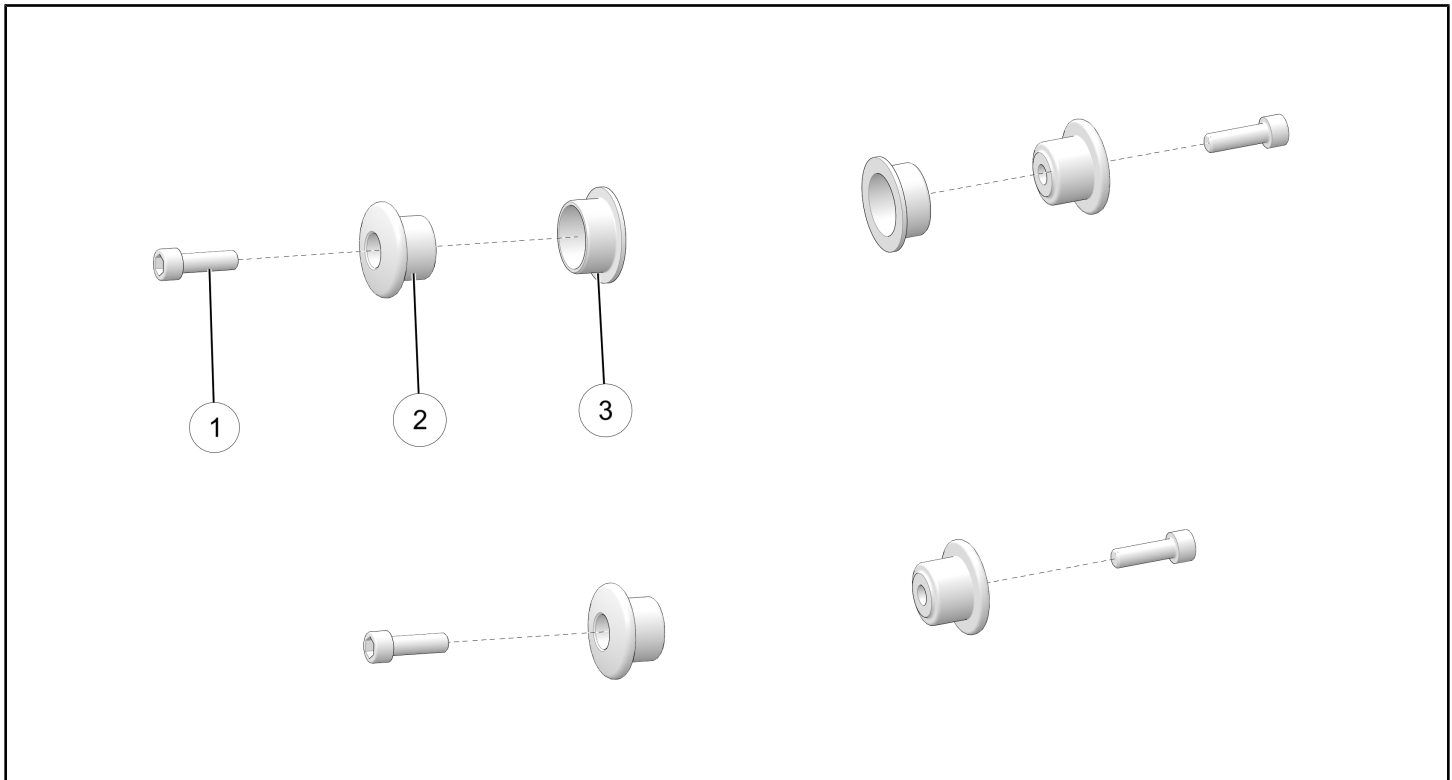
BEFORE YOU BEGIN

Read these instructions and check to be sure all parts and tools are accounted for. Please retain these installation instructions for future reference and parts ordering information.

APPLICATION

Verify accessory fitment at www.indianmotorcycle.com.

KIT CONTENTS



NOTICE

XXX = Indian Motorcycles® color code (For example: 266 = Black)

REF	QTY	PART DESCRIPTION	P/N AVAILABLE SEPARATELY
1	4	Screw, Socket Head M6 x 1.0 x 20 mm	7517506
2	4	Spool	5143462-XXX
3	2	Bushing	5143728

TOOLS REQUIRED

- Safety Glasses
- Socket Set, Hex Bit, Metric
- Torque Wrench

IMPORTANT

Your Indian Motorcycle® Windshield Mount Spool Kit is exclusively designed for your vehicle. Please read the installation instructions thoroughly before beginning. Installation is easier if the vehicle is clean and free of debris. For your safety, and to ensure a satisfactory installation, perform all installation steps correctly in the sequence shown.

INSTALLATION INSTRUCTIONS

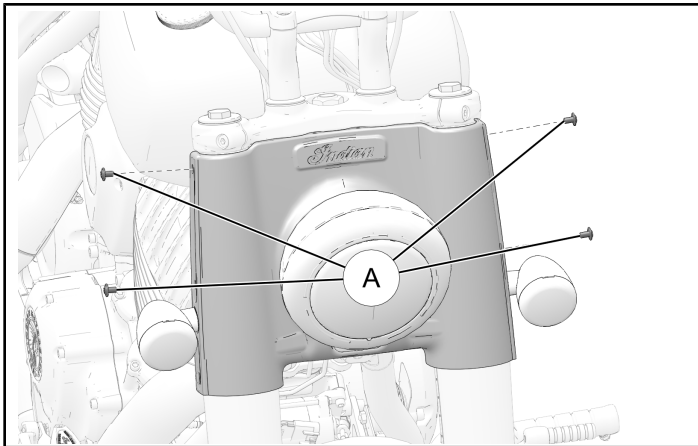
VEHICLE PREPARATION

GENERAL

1. Park motorcycle on a flat surface, fully extend kickstand, and make sure vehicle is stable.
2. Turn key or ignition switch to OFF position and remove key. If equipped with keyless fob, remove fob from proximity of vehicle.

ACCESSORY INSTALLATION

1. Remove and discard the two screws (A) from each side of the nacelle.



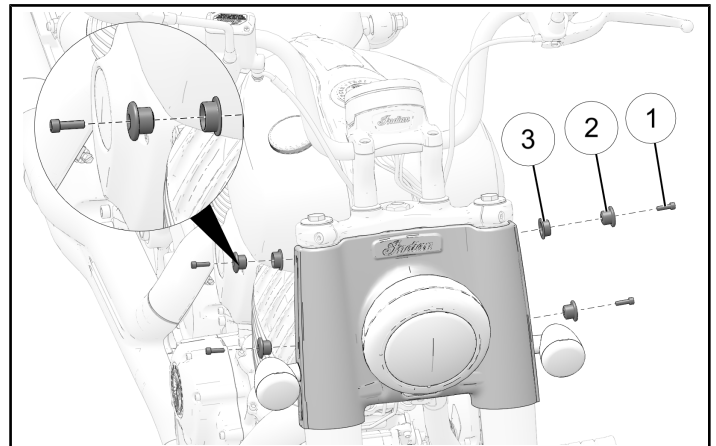
2. Install one bushing (3) (upper spools only), two spools (2), and two screws (1) into each side of the nacelle. Torque the screws to specification.

NOTICE

Make sure to install the flat face of each bushing (3) against the nacelle.

TORQUE

Socket Head Screw (1):
89 in-lbs (10 N·m)



INSTRUCTION FEEDBACK FORM

A feedback form has been created for the installer to provide any comments, questions or concerns about the installation instructions. The form is viewable on mobile devices by scanning the QR code or by clicking [HERE](#) if viewing on a PC.

