

# ACE SKID PLATE KIT



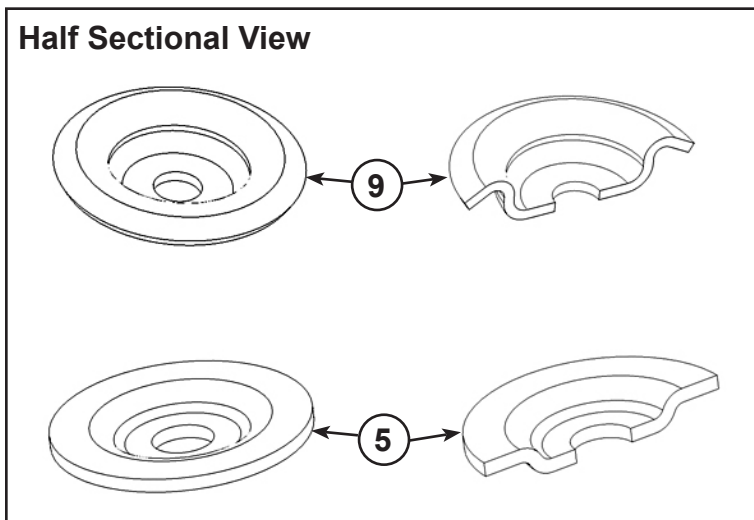
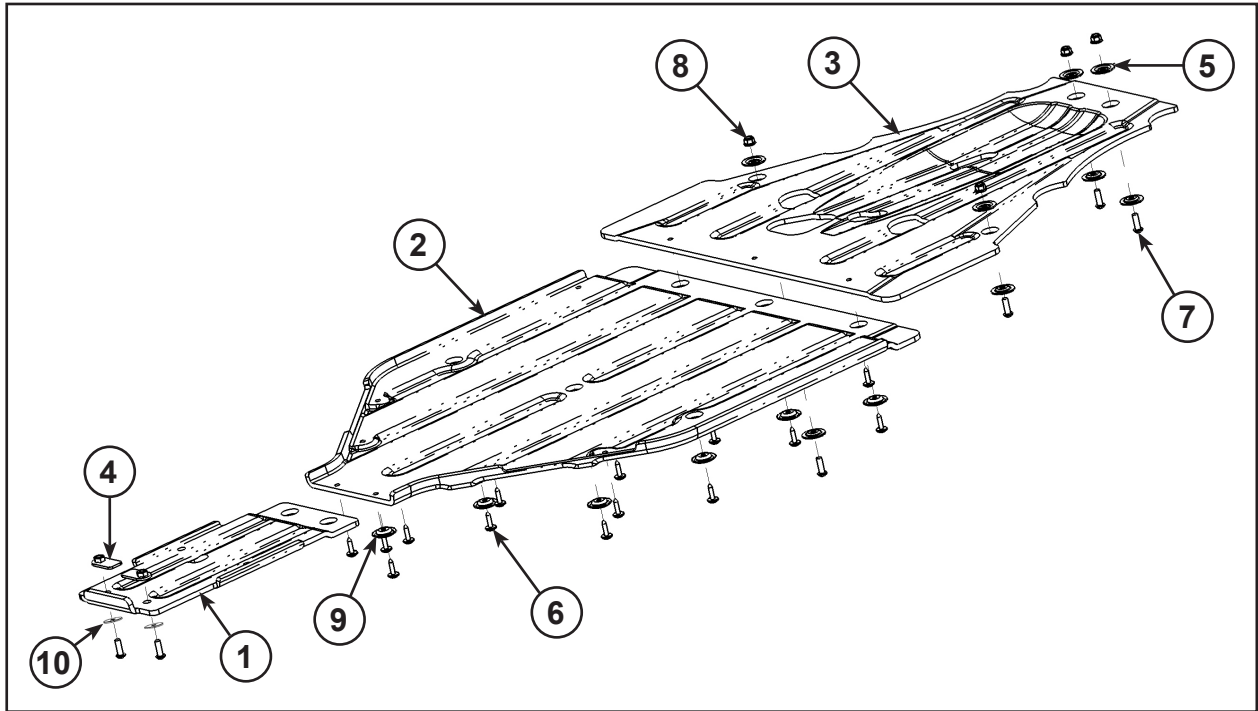
P/N 2880543

## APPLICATION

SPORTSMAN ACE MODELS

## BEFORE YOU BEGIN

Read these instructions twice and check to be sure all parts and tools are accounted for. Please retain these installation instructions for future reference and parts ordering information.



## KIT CONTENTS

Ref	Qty	Part Description	Part Number
1	1	Front Skid Plate Guard	5451872
2	1	Center Skid Plate Guard	-
3	1	Rear Skid Plate Guard	-
4*	2	Weld Nut, Skid Plate	-
5*	8	Skid Plate Washer	-
6*	14	Screw-M6x1.0X25, TXTH	-
7*	6	Screw-M8x1.25X25 8.8, TXBH	-
8*	4	Flange Nut-M8X1.25	-
9*	8	Domed Washer	-
10	2	Washer	-
	1	Instructions	9925464

ITEMS MARKED (\*) ARE INCLUDED IN HARDWARE KIT PN 2205719.

## TOOLS NEEDED

Safety Goggles

Metric Sockets Set and Ratchet

Torx Drivers

## APPROXIMATE ASSEMBLY TIME

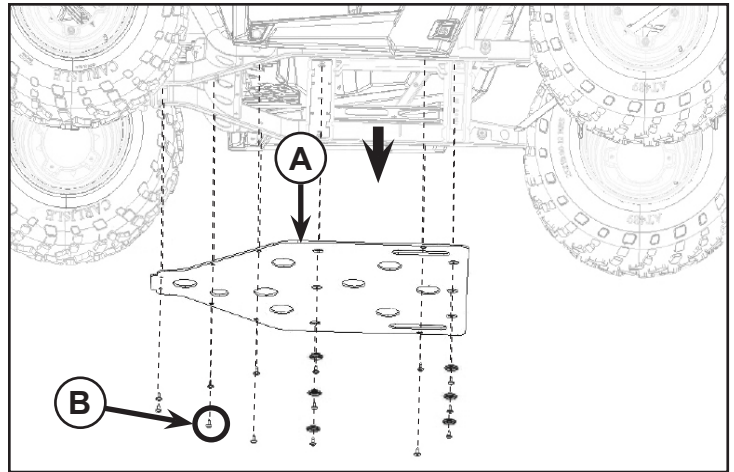
20 - 25 min

## IMPORTANT

Your Polaris ACE SKID PLATE KIT is exclusively designed for your vehicle. Please read the installation instructions thoroughly before beginning. Installation is easier if the vehicle is clean and free of debris. For your safety, and to ensure a satisfactory installation, perform all installation steps correctly in the sequence shown.

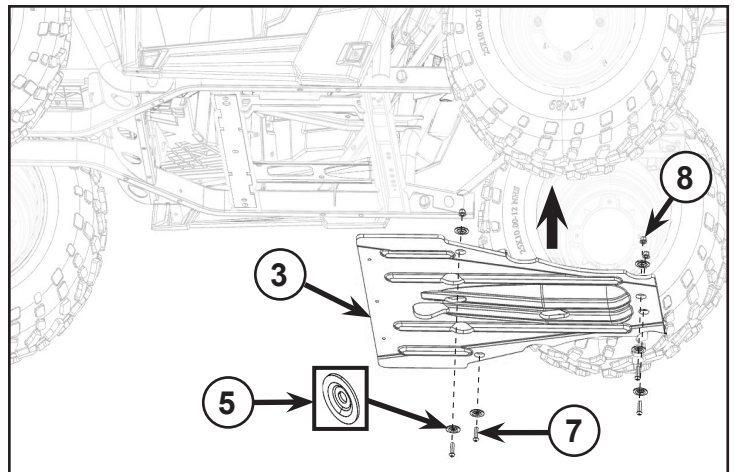
## INSTALLATION INSTRUCTIONS

1. Place the vehicle in “**PARK**” and turn the key to “**OFF**” position. Remove the key from the vehicle.
2. Take out the stock skid plate (A) by removing fourteen M6 screws (B) and relevant washers as shown in figure. You should not need to re-use any of this hardware during installation of the new skid plate.



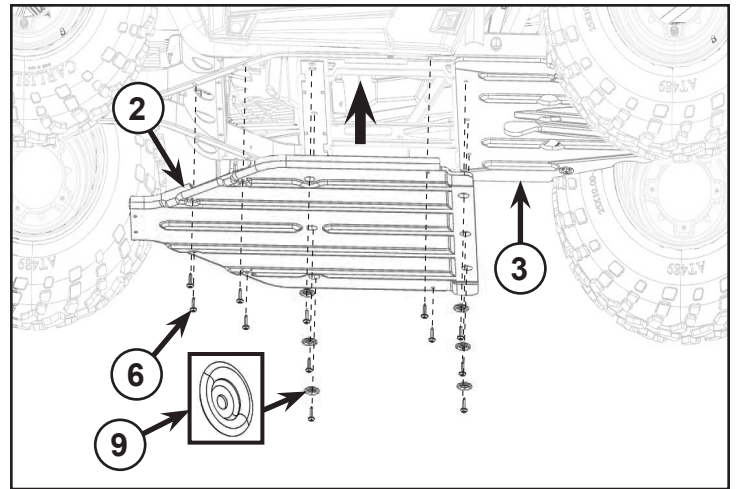
3. Install the new rear skid plate (3) using M8 screws (7), skid plate washers (5) and flange nuts (8) at four locations as shown in figure. Do not tighten the screws at this time.

**NOTE:** Skid plate washers are used on both the bolt side and nut side as shown.



4. Install the new middle skid plate (2) with M6 screws (6) and domed washers (9) at eight locations and attach with the rear skid plate (3) in three locations as shown in figure. Once screws are installed in middle skid plate tighten the other screws in rear skid plates.

**NOTE:** Torque M6 screws to 6 ft. lbs. (8.1 Nm) and torque M8 screws to 16 ft. lbs. (21.7 Nm).



5. Install the new front skid plate (1) with two M8 screws (7), washers (10) and weld skid plate nuts (4) and fix with middle skid plate (2) with two M6 screws (6) and domed washers (9) as shown in figure.

**NOTE:** Torque M8 screws to 16 ft. lbs. (21.7 Nm). Torque M6 screws to 6 ft. lbs. (8.1 Nm).

