

SKID PLATE KIT



P/N 2884852

BEFORE YOU BEGIN

Read these instructions and check to be sure all parts and tools are accounted for. Please retain these installation instructions for future reference and parts ordering information.

APPLICATION

Verify accessory fitment at www.polaris.com.

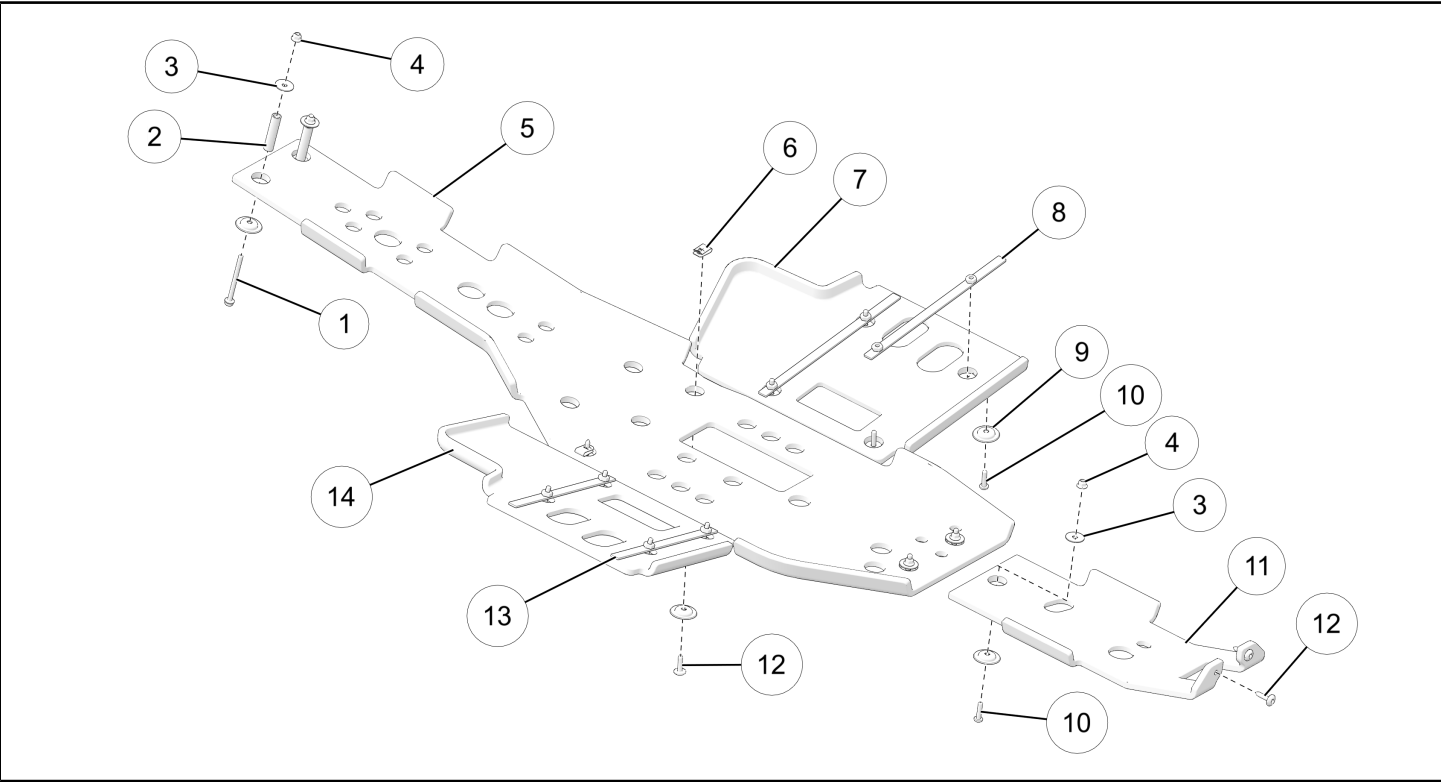
IMPORTANT

This kit is not compatible with *Plow Mount Kit* (P/N 2881424). You must remove the front skid plate in order to use the plow mount. All other skid plate parts can remain on the vehicle.

IMPORTANT

If you are using this kit in conjunction with the *Rear Brush Guard Kit* (P/N 2884847), you must use the hardware provided in this kit and not the hardware provided in the *Rear Brush Guard Kit* (P/N 2884847).

KIT CONTENTS



REF	QTY	PART DESCRIPTION	P/N AVAILABLE SEPARATELY	AVAILABLE SERVICE KIT
1	2	Screw-Hex Flange, M6 x 1 x 75	n/a	2208771
2	2	Tube-Rear, Mount	5343127	n/a
3	5	Washer - .281 x 1.00 x .051	n/a	2208771
4	5	Nut-M6 x 1.0, Flange, Nylon Locking	n/a	2208771

REF	QTY	PART DESCRIPTION	P/N AVAILABLE SEPARATELY	AVAILABLE SERVICE KIT
5	1	Plate-Skid, Center	5457629	n/a
6	2	Nut-M6-1.0, U-Type	n/a	2208771
7	1	Plate-Skid, LH	5457630	n/a
8	2	Weld-Mount, LH	1026190	n/a
9	15	Washer-Skid Plate	n/a	2208771
10	11	Screw-Torx® Pan Head-M6 x 1.0 x 25	n/a	2208771
11	1	Plate-Skid, Front	5457628	n/a
12	4	Screw-Torx® Truss Head-M6 x 1.0 x 25	n/a	2208771
13	2	Weld-Mount, RH	1026191	n/a
14	1	Plate-Skid, RH	5457631	n/a

TOOLS REQUIRED

- Safety Glasses
- Socket Set, Metric
- Socket Set, Torx® Bit
- Torque Wrench
- Wrench Set, Hex Bit
- Wrench Set, Metric

IMPORTANT

Your Skid Plate Kit is exclusively designed for your vehicle. Please read the installation instructions thoroughly before beginning. Installation is easier if the vehicle is clean and free of debris. For your safety, and to ensure a satisfactory installation, perform all installation steps correctly in the sequence shown.

INSTALLATION INSTRUCTIONS

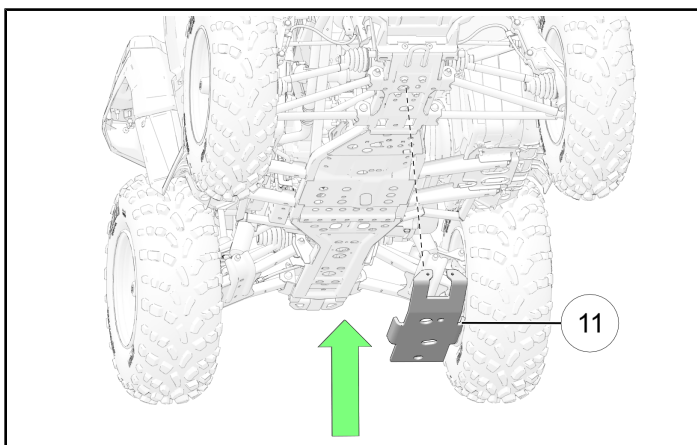
VEHICLE PREPARATION

GENERAL

1. Park vehicle on a flat surface.
2. Push engine stop switch to the OFF position.
3. Turn key to the OFF position and remove key.

ACCESSORY INSTALLATION

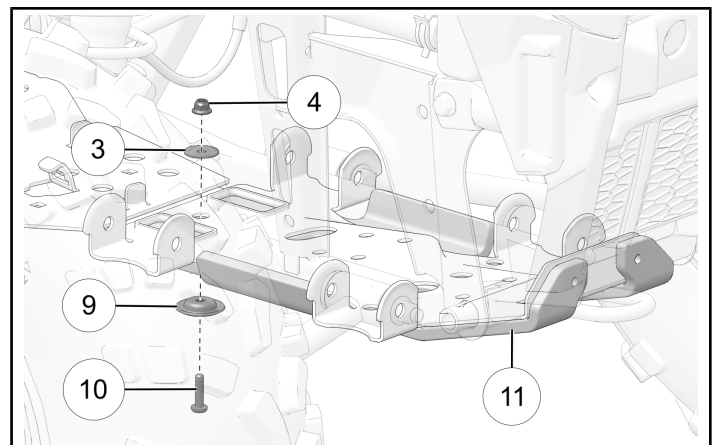
1. Place the front skid plate ⑪ under the vehicle's chassis.



2. Install the skid plate washer ⑨ and screw ⑩ on the underside of the front skid plate ⑪. Then install the washer ③ and nut ④ on the top to secure the front skid plate to the chassis. Hold each nut ④ and torque each screw ⑩ to specification.

TORQUE

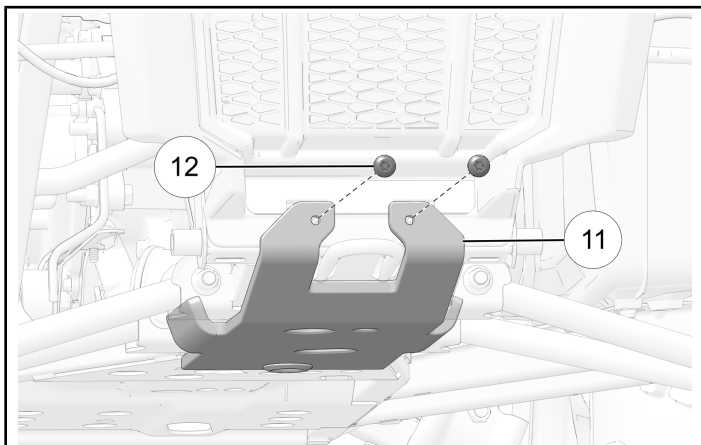
Pan Head Torx® Screws ⑩:
89 in-lbs (10 N·m)



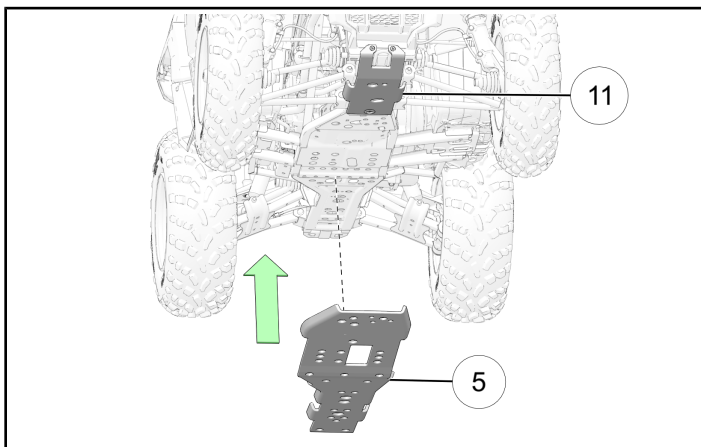
3. Install the two front screws ⑫ onto the front skid plate ⑪ and torque to specification.

TORQUE

Truss Head Torx® Screws ⑫:
89 in-lbs (10 N·m)



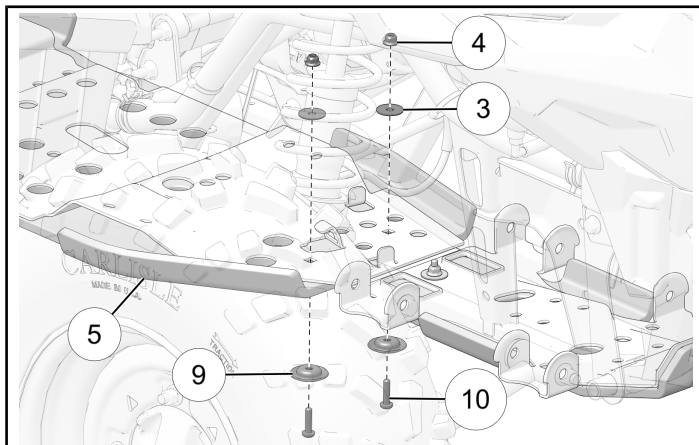
4. Place the center skid plate ⑤ behind the front skid plate ⑪ under the vehicle's chassis.



5. Install the skid plate washers ⑨ and screws ⑩ on the underside of the center skid plate ⑤. Then install the washers ③ and nuts ④ on the top to secure the center skid plate to the chassis. Hold each nut ④ and torque each screw ⑩ to specification.

TORQUE

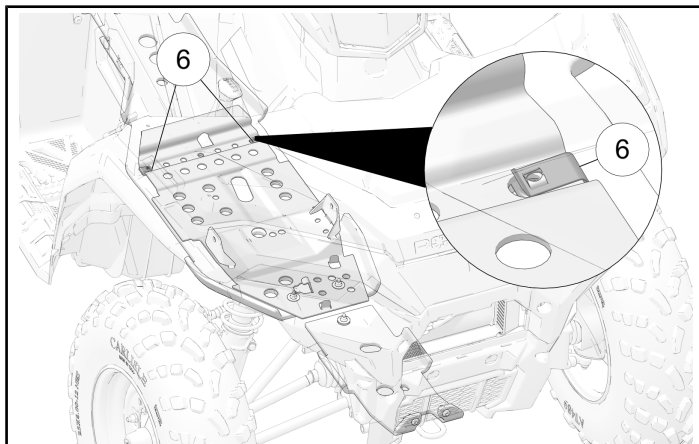
Pan Head Torx® Screws ⑩:
89 in-lbs (10 N·m)



6. Secure the two nuts ⑥ onto the chassis as shown.

NOTICE

Some components are hidden for clarity.



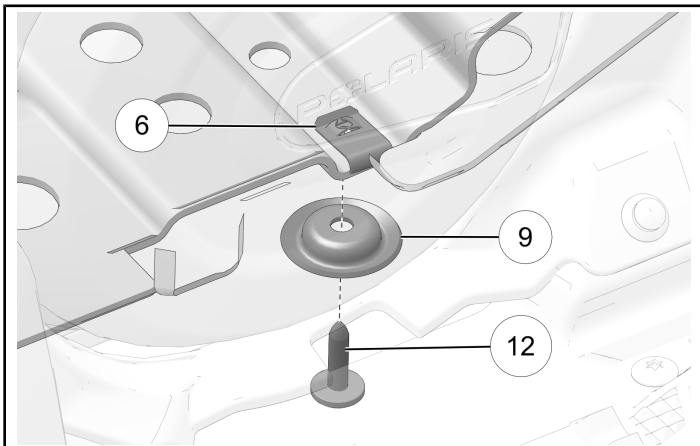
7. Install the skid plate washer ⑨ and screw ⑫ through the underside of the center skid plate and through the previously installed nut ⑥. Torque the screw ⑫ to specification. Repeat this step on the other side of the vehicle.

TORQUE

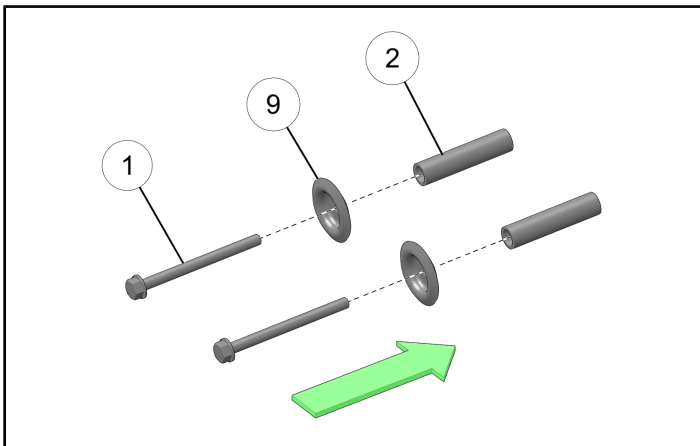
Truss Head Torx® Screws ⑫:
89 in-lbs (10 N·m)

NOTICE

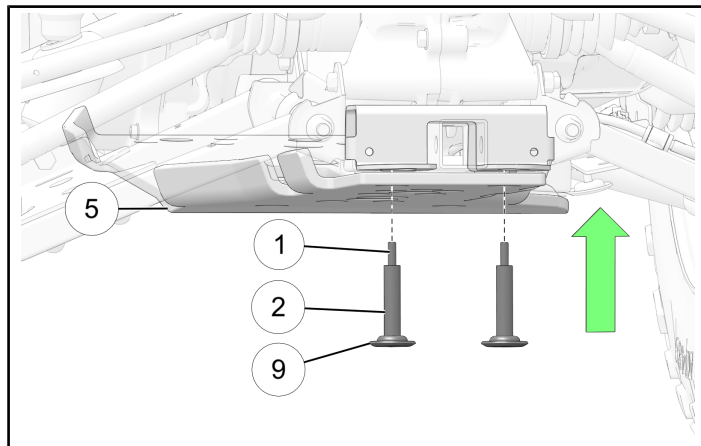
Left side shown.



8. Install the two hex flange screws ① and the two skid plate washers ⑨ through the two rear tube mounts ②.



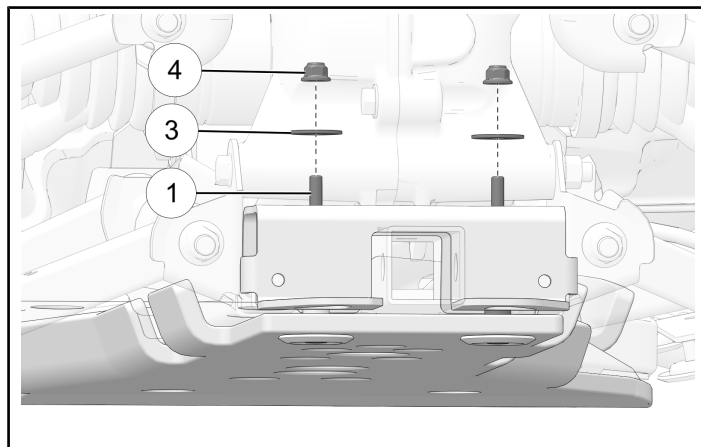
9. Install the assembled hardware into the rear end of the skid plate ⑤ and through top hitch plate. Hold in place for next step.



10. Install the two washers ③ and two nuts ④ to the installed hardware assemblies. Hold each nut ④ and torque each previously installed screw ① to specification.

TORQUE

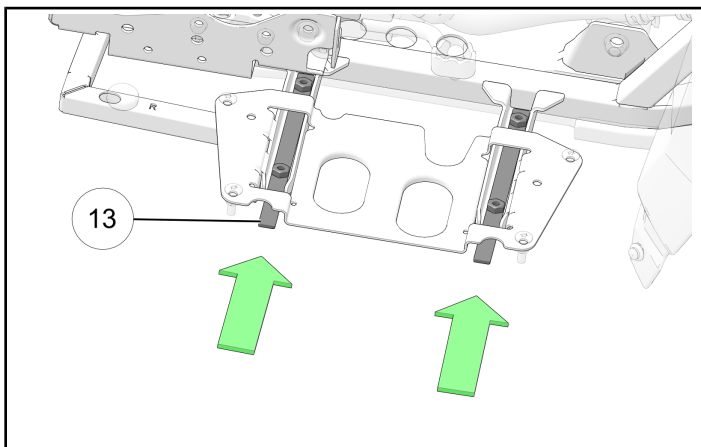
Hex Flange Screws ①:
89 in-lbs (10 N·m)



11. Slide the two right-hand weld mounts ⑬ into the footrest extension.

NOTICE

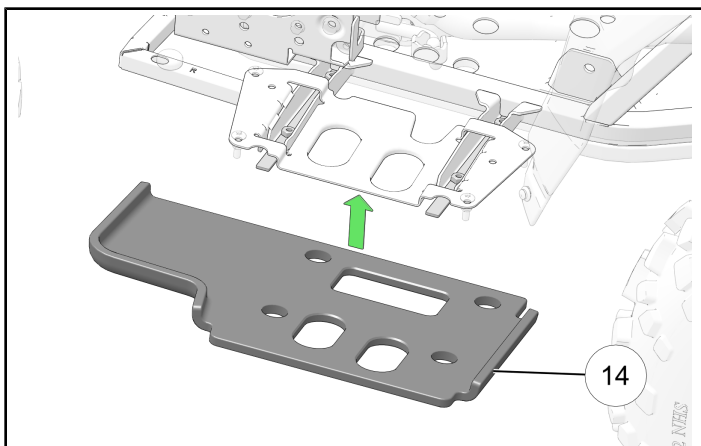
Right side shown.



12. Place the right-hand skid plate ⑭ under the footrest extension.

NOTICE

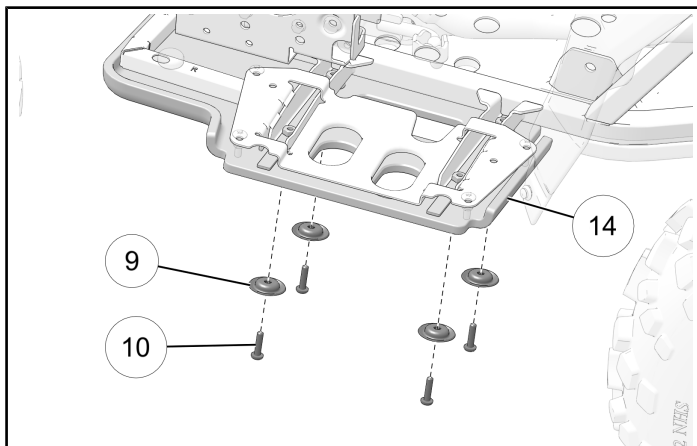
Right side shown.



13. Install the four skid plate washers ⑨ and four screws ⑩ on the underside of the right-hand skid plate ⑭ to secure the right-hand skid plate to the footrest extension. Torque screws ⑩ to specification.

TORQUE

Pan Head Torx® Screws ⑩:
89 in-lbs (10 N·m)



14. Repeat steps 11 through 13 on the other side of the vehicle.

INSTRUCTION FEEDBACK FORM

A feedback form has been created for the installer to provide any comments, questions or concerns about the installation instructions. The form is viewable on mobile devices by scanning the QR code or by clicking [HERE](#) if viewing on a PC.

