

ENGINE BRAKING CLUTCH KIT
Kit PN 2200953 (Four Stroke)
Kit PN 2200952 (Two Stroke)
Kit PN 2201097 (Barrus)



Application

Polaris ATVs with four stroke engines
Two stroke with Hi-Low-Reverse

NOTE: This kit is not recommended for two stroke with only Hi-Reverse transmissions because of reduced engine braking performance

IMPORTANT: Due to the complexity of this kit, it should be installed by a qualified Polaris dealer.

Before you begin, read these instructions and check to be sure all parts and tools are accounted for.

Please retain these installation instructions for future reference and parts ordering information.

The contents of this kit include:

<u>Qty.</u>	<u>Part Description</u>	<u>Part No.</u>
1	Drive Clutch Assembly	1321706 -SP (1321801 - Kit 2201097)
1	Driven Clutch Assembly	1322190 (1322184 - Kit 2200952)
1	Drive Belt	3211069 (3211071 - Kit 2201097)
1	Instruction	9914678

NOTE: Driven clutch spring is included in this kit.

Shift weights and springs for different altitudes for a particular model are found in other Polaris Service Department publications.

Service parts available for this kit include the following parts:

<u>Qty.</u>	<u>Part Description</u>	<u>Part No.</u>
<u>Drive Clutch</u>		
3	Roller/bushing assembly	1321457
1	Bushing Cover	3576510
6	Bolt, 1/4-20 x 1.25	7512176
6	Lock Washer, 1/4"	7552801
6	Multilube Washer	5430945
6	Clutch Button	5431936
1	One-way clutch, drive	1520231
1	Spacer	5131646
3	Roller	5020422
1	2.25" PTFE Washer	7556008
1	2.00" PTFE Washer	7556009
1	Bushing, 2.25 x 1.0	3585712
<u>Driven Clutch</u>		
3	Roller	3250039
3	Screw	7517323
1	Ramp	5131674
1	Spring, Four Stroke	7041636 (7041635 Kit 2200952)
1	Bushing	7556010
1	PTFE Washer	7556013
1	Thrust Washer	5211115
1	Ramp retaining ring	7710448
1	Flat spacer	5210752
1	HD retaining ring	7710461
1	Bushing, 1.5 x 1	3576511
1	Bushing, 2.3 x .5	3585710

You will need to supply:

T Handle Clutch Puller (PN 2870506)

Driven Clutch Puller (PN 2870913)

IMPORTANT: Perform all items correctly and completely.

INSTALLATION INSTRUCTIONS

The installation of the engine braking clutch is nearly identical to the procedure for a standard clutch. Refer to the PVT System section of the ATV Service Manual for details. Some suggestions to ease the installation follow:

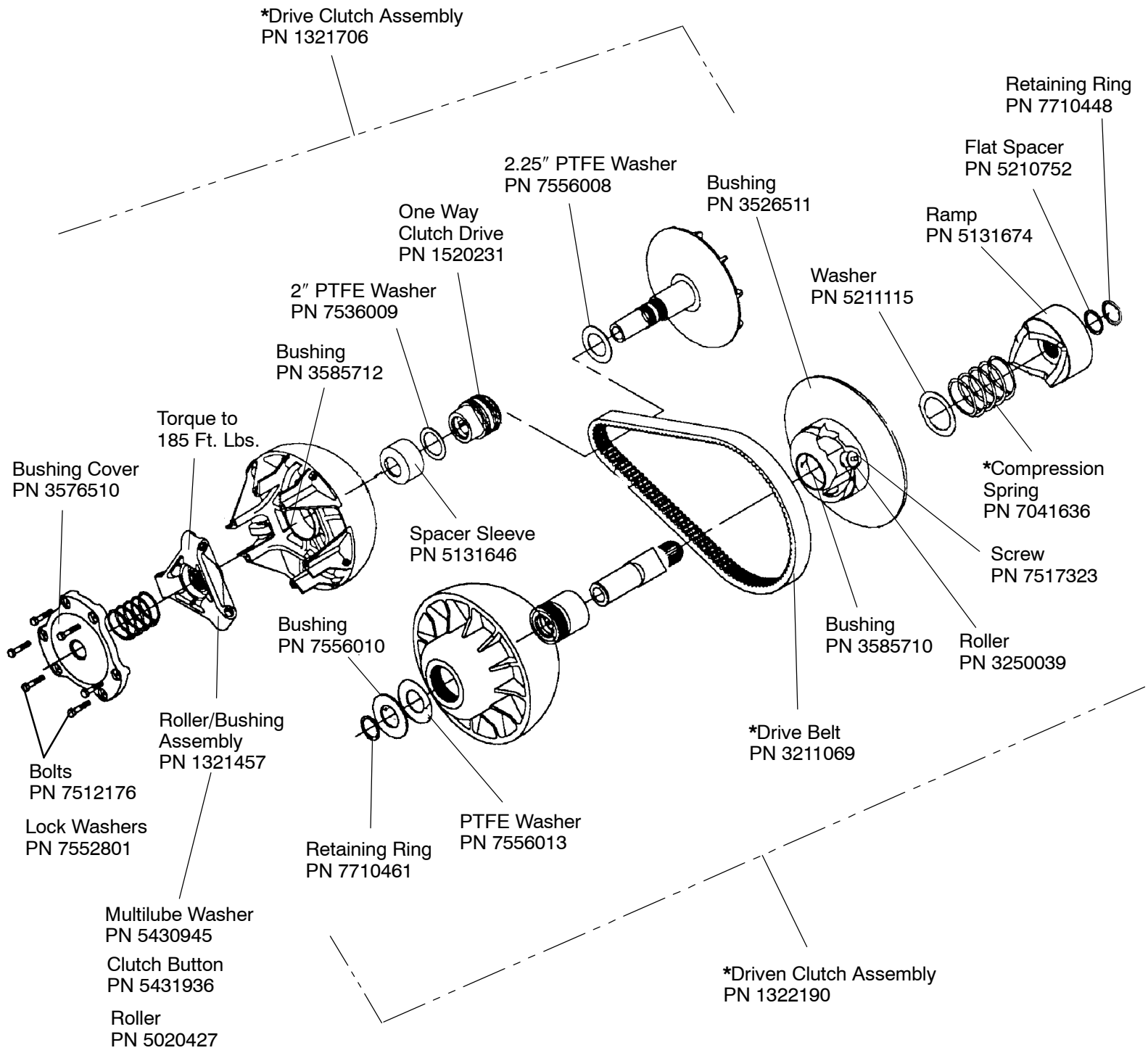
1. Remove the clutch cover and existing clutch, if installed.
2. The sheaves of the driven clutch are held together by the force of the spring. Force open the sheaves and, measuring from the outer edge of the sheaves, position the belt so it is approximately 1" inside the sheaves.
3. Release the sheaves. The spring force will clamp the belt and hold it in place.
4. Slip the loose side of the belt onto the drive clutch.
5. Install the driven clutch, drive clutch and belt on the machine as a unit. Install retaining bolts and washers and torque to Service Manual Specifications.

6. Place the gear selector in neutral. Rotate the driven clutch by hand clockwise (backwards) until the belt adjusts itself to run near the outside diameter of the driven sheaves. **NOTE:** No shims for adjusting belt deflection are needed in this clutch.
7. Reinstall the clutch cover.

OPERATION RECOMMENDATIONS AND EXPECTATIONS

1. For best performance and belt life, use low-range in down hill applications, soft terrain and heavy pulling.
2. Disassembly of the driven clutch is recommended to be commenced from the helix end to lessen the chance of damage to seals in the one-way clutch.
3. Before any repairs are done on this clutch, contact the Service Department.

PN 9914678 Rev 04 12/00
Printed in U.S.A.



- *Driven Compression Spring (Kit 2200952) PN 7041635
- * Drive Belt (Kit 2201097) PN 3211071
- * Driven Clutch Assembly (Kit 2200952) PN 1322184
- * Drive Clutch Assembly (Kit 2201097) PN 1321801