

**ENGINE BRAKING CLUTCH KIT
KIT PN 2875793 (Sportsman 500)
KIT PN 2875794 (Sportsman 450)**



POLARIS
The Way Out.®

Application

2006-Current Sportsman 450 and 500 H.O.

Before you begin, read these instructions and check to be sure all parts and tools are accounted for. Please retain these installation instructions for future reference and parts ordering information.

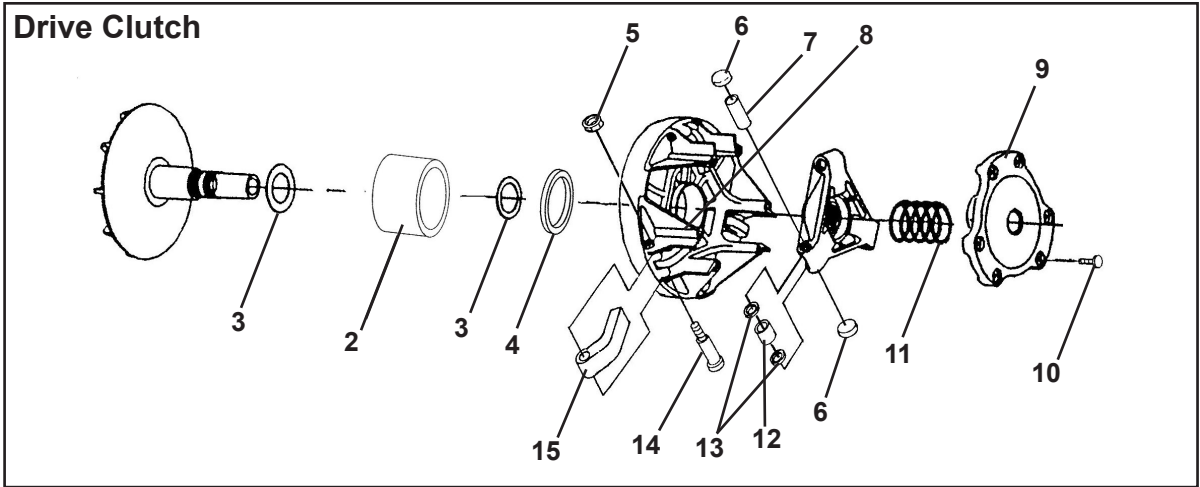
IMPORTANT: Due to the complexity of this kit, it must be installed by a qualified Polaris dealer. Before you begin, read these instructions and check to be sure all parts and tools are accounted for. Please retain these installation instructions for future reference and parts ordering information.

Qty.	Part Description	Part No.
1	Drive Clutch Asm.	1322552 (Sportsman 500 only)
1	Drive Clutch Asm.	1322624 (Sportsman 450 only)
1	Driven Clutch Asm.	1322408
1	Decal	7077666
1	Instruction	9920590

Service parts available for this kit include the following part:

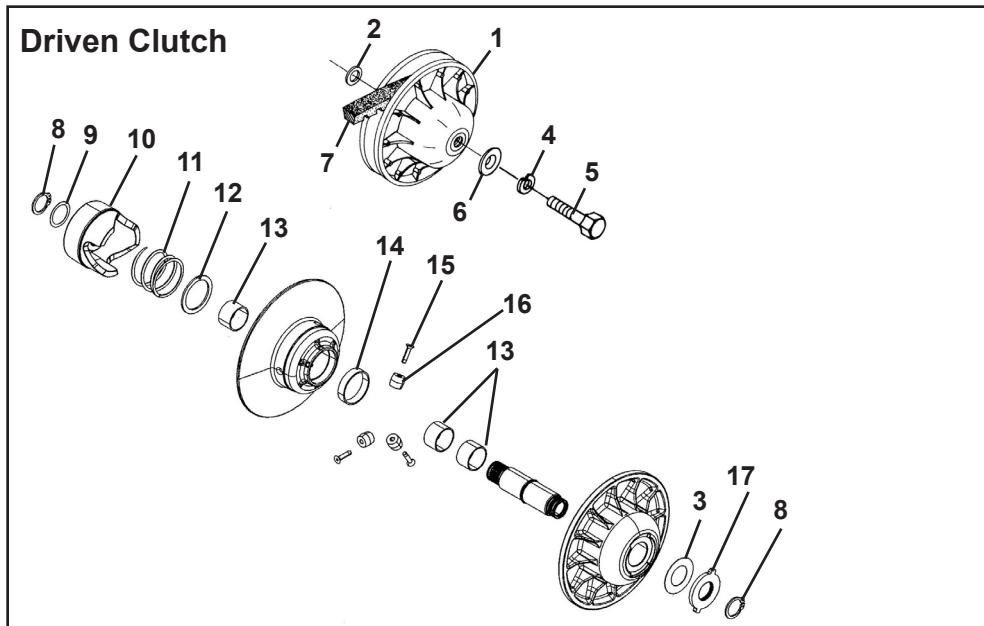
Drive Clutch

No.	Qty	Part Description	Part No.
1	1	Asm. Drive Clutch (incl. 2-10, 12-14)	1322555
2	1	Asm. Drive Clutch, Smooth Oneway	1520836
3	2	Washer, Clutch	7556335
4	1	Spacer	5631674
5	3	Nut, Flexloc	7541906
6	6	Button, Clutch	5431936
7	3	Pin, Roller	5020422
8	1	Bearing	3514492
9	1	Cover, Bearing	3576510
10	6	Screw	7518062
11	1	Spring, Clutch (Sp 500)	7041157
	1	Spring, Clutch (SP 450)	7042202
12	3	Asm. Roller and Bushing	1321622
13	6	Washer	5430945
14	3	Bolt, Shoulder	7512266
15	3	Weight, Shift 10WH (Sp 500 & Sp 450)	5630710



Driven Clutch

No.	Qty	Part Description	Part No.
1	1	Asm. Driven Clutch, EBS (incl. no. 3,7,8, 11-17)	1322408
2	AR	Bushing	7556120
3	1	Washer	7556203
4	1	Washer, Spring Lock	7552901
5	1	Bolt	7515327
6	1	Washer, Domed	5220646
7	1	Belt, Drive, EBS	3211091
8	2	Ring, Retaining	7710448
9	1	Spacer	5210752
10	1	Ramp, Stationary, Braking	5131674
11	1	Spring, Driven	7041635
12	1	Washer	5211115
13	3	Bearing, Moveable	3576511
14	1	Bearing	3585710
15	3	Screw	7517323
16	3	Roller, Taper	1321977
17	1	Plate, Driven, Clutch, EBS	5247804



You will need to supply:

T Handle Clutch Puller (PN 2870506)

Driven Clutch Puller (PN 2870913)

IMPORTANT: For your safety, and to ensure a satisfactory installation, perform all installation steps correctly in the sequence as shown on the attached instructions.

INSTALLATION INSTRUCTIONS

The installation of the engine braking clutch is nearly identical to the procedure for a standard clutch. Refer to the PVT System section of the *ATV Service Manual* for details. Some suggestions to ease the installation follow:

1. Remove the clutch cover and existing clutch, if installed.
2. The sheaves of the driven clutch are held together by the force of the spring. Force open the sheaves and, measuring from the outer edge of the sheaves, position the belt so it is approximately 1" inside the sheaves.
3. Release the sheaves. The spring force will clamp the belt and hold it in place.
4. Slip the loose side of the belt onto the drive clutch.
5. Install the driven clutch, drive clutch and belt on the machine as a unit. Install retaining bolts and washers and torque to *Service Manual Specifications*.
6. Place the gear selector in neutral. Rotate the driven clutch by hand clockwise (backwards) until the belt adjusts itself to run near the outside diameter of the driven sheaves. **NOTE:** No shims for adjusting belt deflection are needed in this clutch.
7. Reinstall the clutch cover.

OPERATION RECOMMENDATIONS AND EXPECTATIONS

1. For best performance and belt life, use low-range in down hill applications, soft terrain and heavy pulling.
2. Before any repairs are done on this clutch, contact the Service Department.