

FRONT BUMPER KIT



P/N 2881627; 2881629

APPLICATION

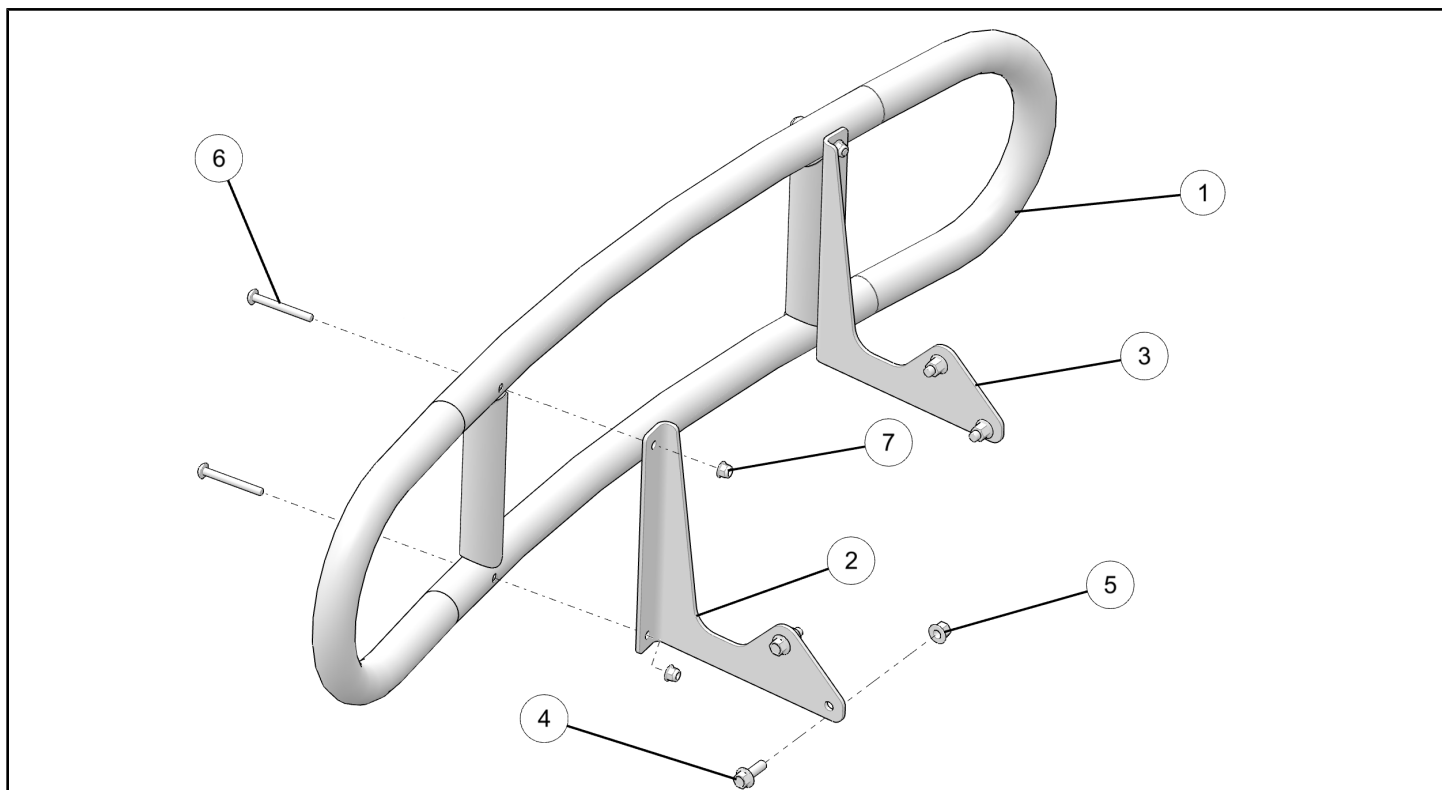
2016 GEM E2, E4, E6, and eL XD

BEFORE YOU BEGIN

Read these instructions and check to be sure all parts and tools are accounted for. Please retain these installation instructions for future reference and parts ordering information.

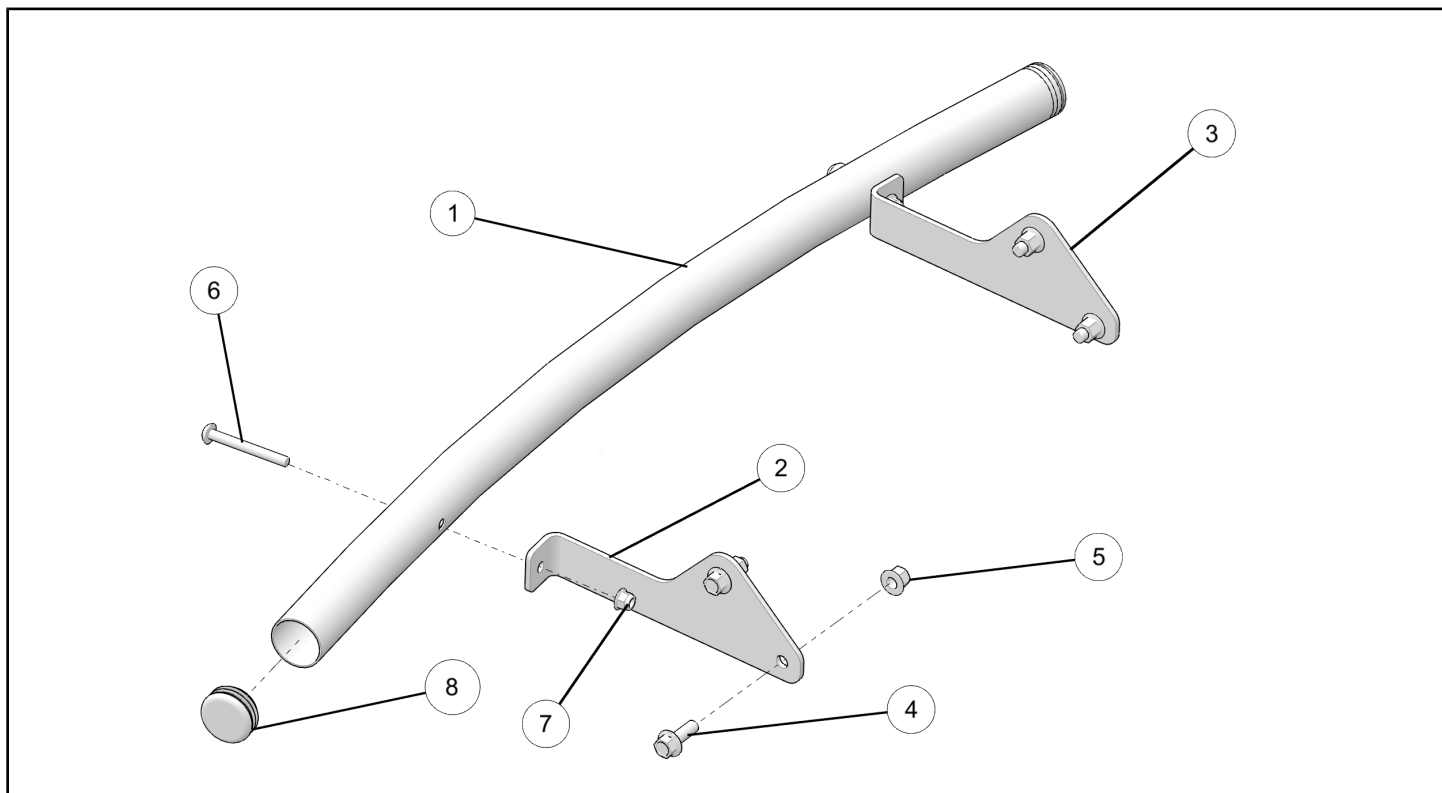
KIT CONTENTS

Kit PN 2881627 includes:



REF	QTY	PART DESCRIPTION	PART NUMBER
1	1	Front Bumper, Rugged	1022808
2	1	Bracket, Front Bumper, Rugged, LH	5263291
3	1	Bracket, Front Bumper, Rugged, RH	5263292
4	4	Screw Hex Flange - M10 X 1.5 X 30	7519803
5	4	Nut - M10 X 1.5	7520117
6	4	Screw Hex Flange - M8 X 1.25 X 65	7520535
7	4	Nut - M8 X 1.25	7547454
	1	Instructions	9926718

Kit PN 2881629 includes:



REF	QTY	PART DESCRIPTION	PART NUMBER
1	1	Tube Bumper, Premium	5339978
2	1	Bracket, Front Bumper, Premium, LH	5263287
3	1	Bracket, Front Bumper, Premium, RH	5263288
4	4	Screw Hex Flange - M10 X 1.5 X 30	7519803
5	4	Nut - M10 X 1.5	7520117
6	2	Screw - M8 X 1.25 X 65	7520536
7	2	Nut - M8 X 1.25	7547454
8	2	Bumper Cap	5434191
	1	Instructions	9926718

TOOLS REQUIRED

- Metric Wrench Set
- Metric Socket Set and Ratchet

IMPORTANT

Your FRONT BUMPER KIT is exclusively designed for your vehicle. Please read the installation instructions thoroughly before beginning. Installation is easier if the vehicle is clean and free of debris. For your safety, and to ensure a satisfactory installation, perform all installation steps correctly in the sequence shown.

ASSEMBLY TIME

Approximately 10 minutes

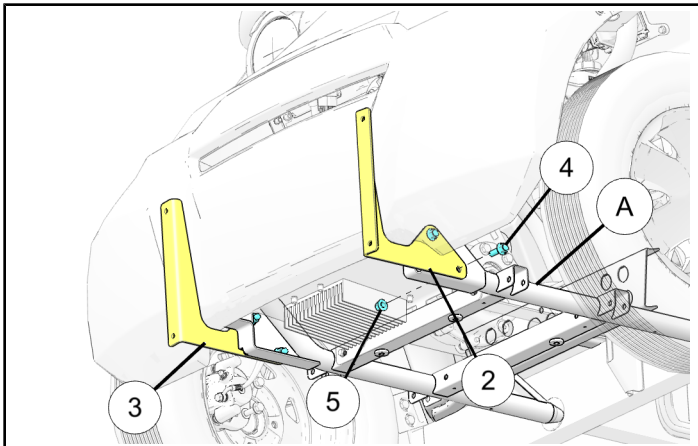
INSTALLATION INSTRUCTIONS

1. Place vehicle in "PARK". Turn key to "OFF" position and remove from vehicle.
2. Install bumper brackets (LH ②, RH ③) to chassis (A) using screws ④ and nuts ⑤ as shown. Torque nuts ⑤ to specification.

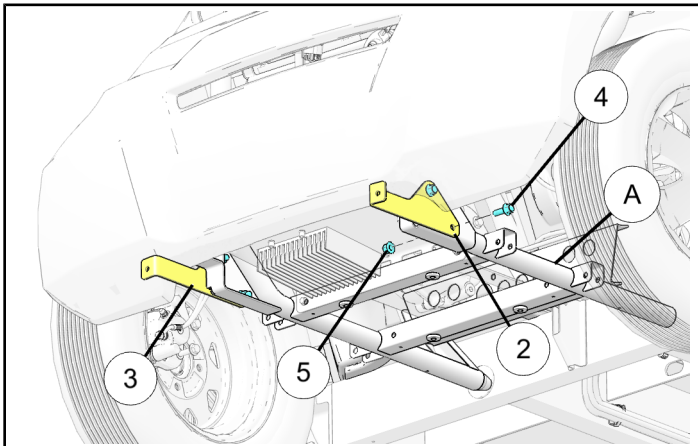
TORQUE

37 lb-ft (50.2 Nm)

For Kit PN 2881627



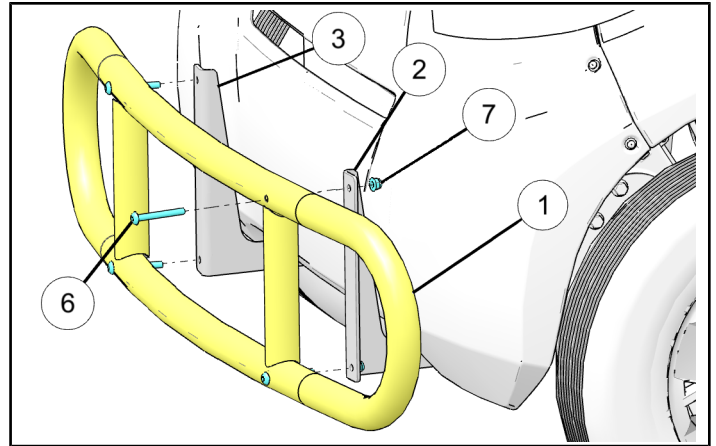
For Kit PN 2881629



3. Install bumper weldment ① to mounting brackets.
 - a. **For Kit PN 2881627:** Install bumper weldment ① to bumper brackets (LH ②, RH ③) using screws ⑥ and nuts ⑦ as shown. Torque nuts ⑦ to specification.

TORQUE

10 lb-ft (13.5 Nm)



- b. **For Kit PN 2881629:** Install bumper weldment ① to bumper brackets (LH ②, RH ③) using screws ⑥ and nuts ⑦ as shown. Torque nuts ⑦ to specification.

TORQUE

10 lb-ft (13.5 Nm)

