

FRONT BUMPER KIT



P/N 2881627, 2884343

APPLICATION

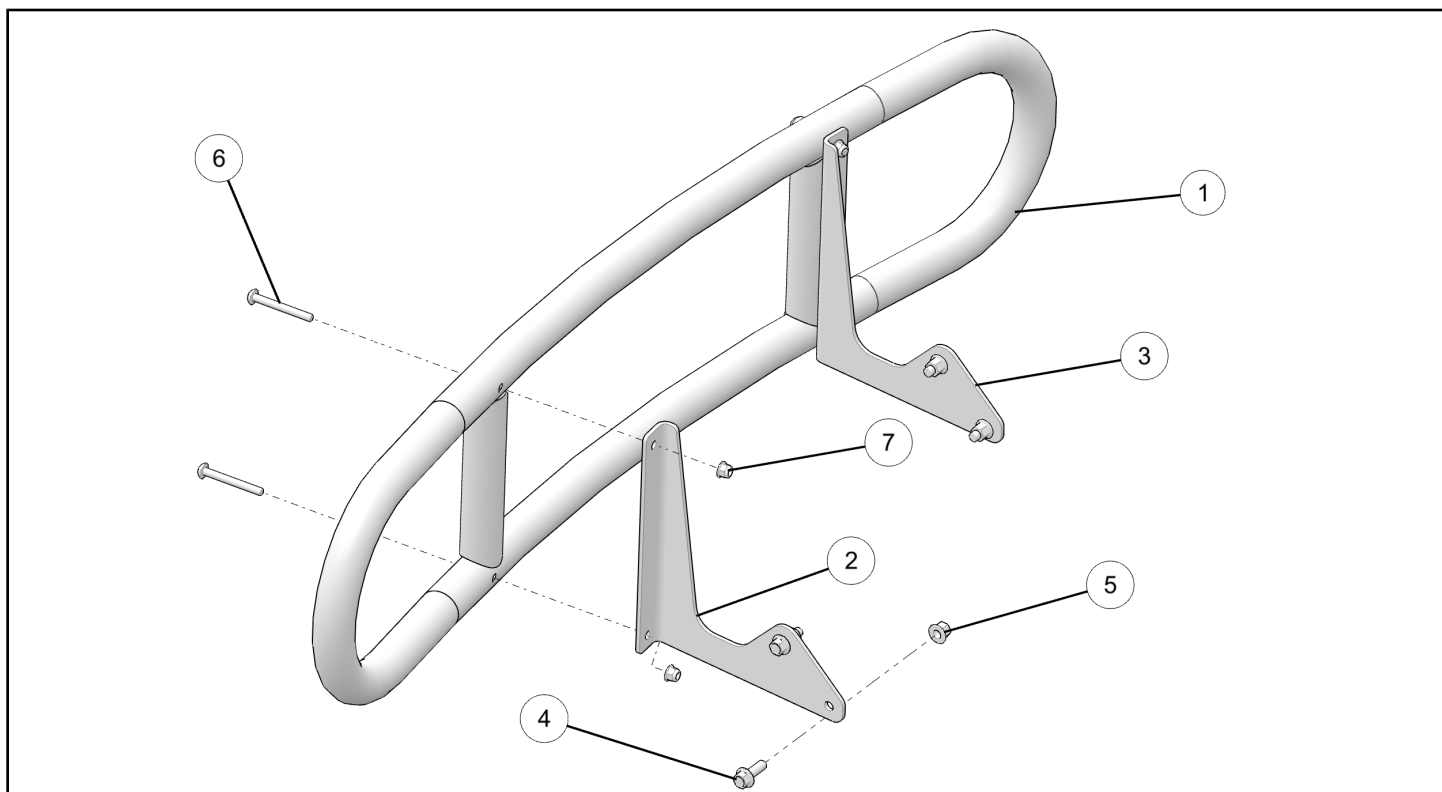
Verify accessory fitment at GEMCAR.COM.

BEFORE YOU BEGIN

Read these instructions and check to be sure all parts and tools are accounted for. Please retain these installation instructions for future reference and parts ordering information.

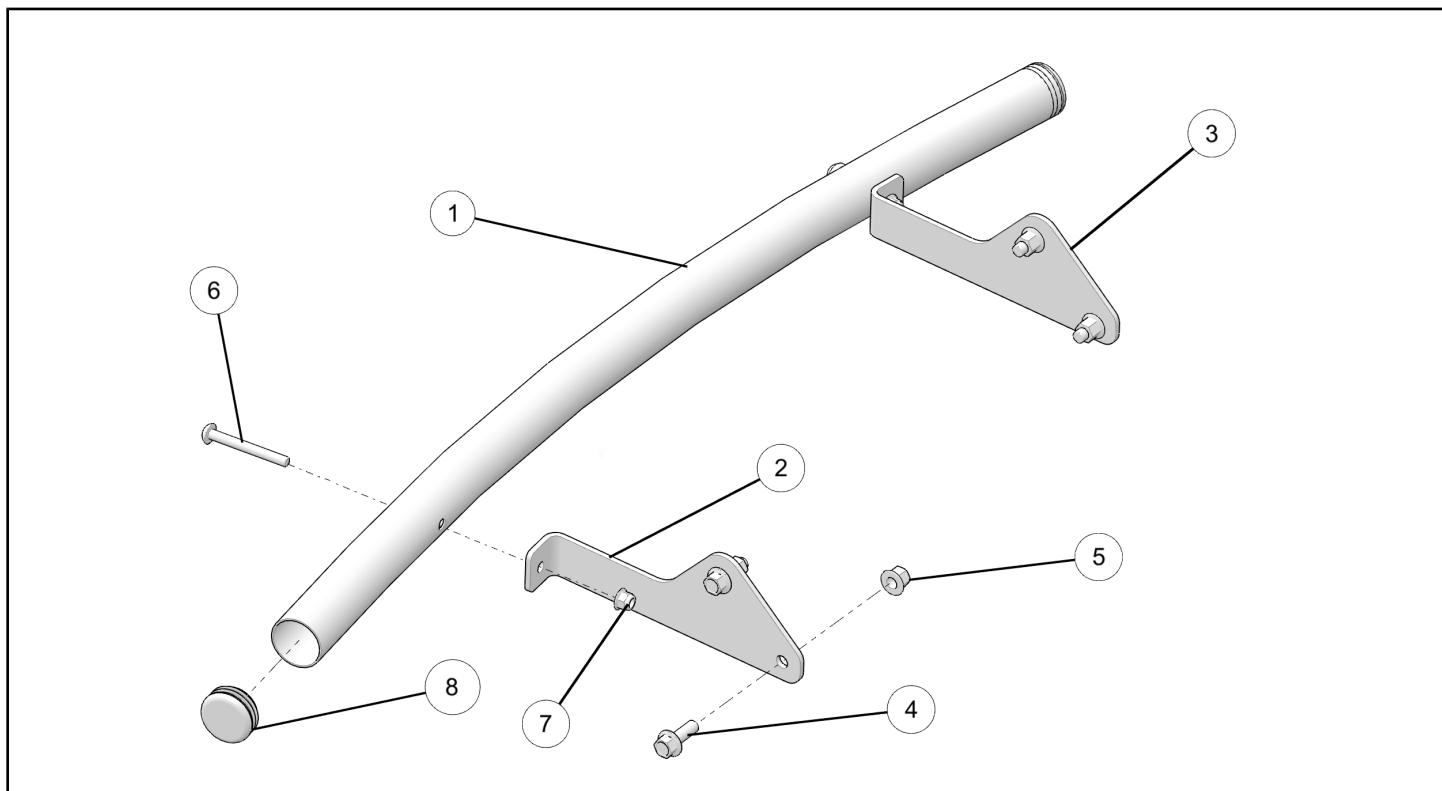
KIT CONTENTS

KIT PN 2881627:



REF	QTY	PART DESCRIPTION	PART NUMBER
1	1	Front Bumper, Rugged	1024993-626
2	1	Bracket, Front Bumper, Rugged, LH	5263291-626
3	1	Bracket, Front Bumper, Rugged, RH	5263292-626
4	4	Screw Hex Flange - M10 X 1.5 X 30	7519803
5	4	Nut - M10 X 1.5	7520117
6	4	Screw Hex Flange - M8 X 1.25 X 65	7520535
7	4	Nut - M8 X 1.25	7547454

KIT PN 2884343:



REF	QTY	PART DESCRIPTION	PART NUMBER
1	1	Tube Bumper, Premium	5341926
2	1	Bracket, Front Bumper, Premium, LH	5263287-626
3	1	Bracket, Front Bumper, Premium, RH	5263288-626
4	4	Screw Hex Flange - M10 X 1.5 X 30	7519803
5	4	Nut - M10 X 1.5	7520117
6	2	Screw - M8 X 1.25 X 65	7520536
7	2	Nut - M8 X 1.25	7547454
8	2	Bumper Cap	5434191

TOOLS REQUIRED

- Safety Glasses
- Torque Wrench
- Socket Set, Metric
- Wrench Set, Metric

IMPORTANT

Your Front Bumper Kit is exclusively designed for your vehicle. Please read the installation instructions thoroughly before beginning. Installation is easier if the vehicle is clean and free of debris. For your safety, and to ensure a satisfactory installation, perform all installation steps correctly in the sequence shown.

INSTALLATION INSTRUCTIONS

VEHICLE PREPARATION

1. Park vehicle on flat surface.
2. Apply parking brake. Turn key to **OFF** position and remove from vehicle.

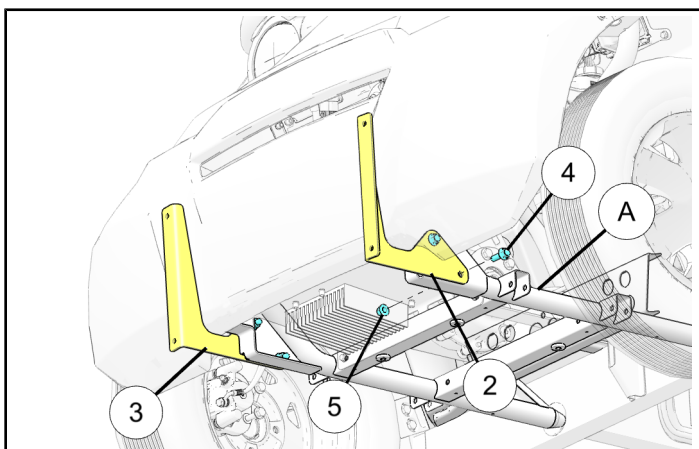
BUMPER INSTALLATION

1. Install bumper brackets (LH ②, RH ③) to chassis ④ using screws ④ and nuts ⑤ as shown. Torque nuts ⑤ to specification.

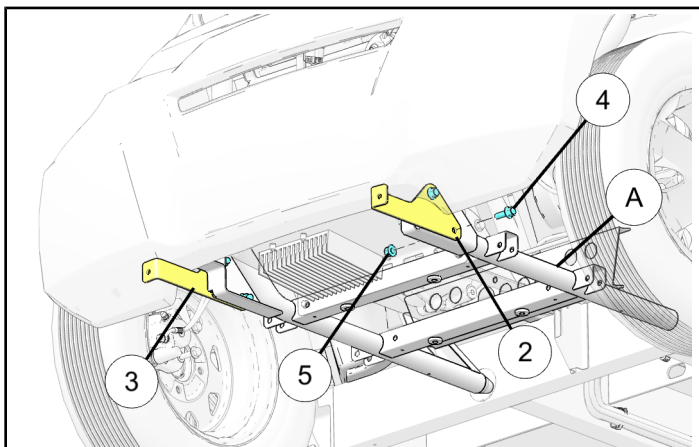
TORQUE

Bumper Bracket Nut ⑤:
37 ft-lbs (50 N·m)

For Kit PN 2881627



Kit PN 2881629

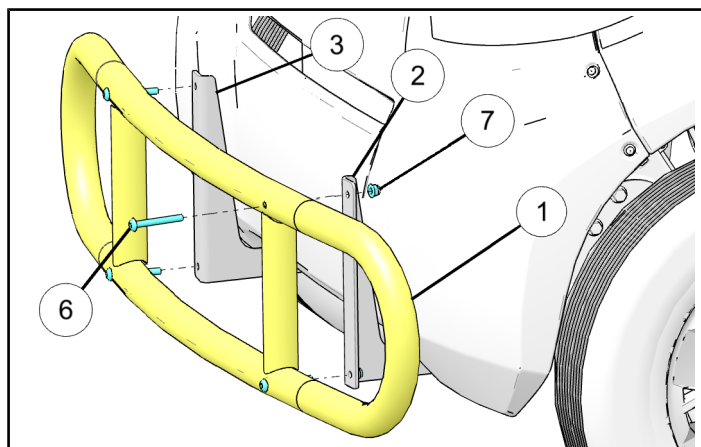


2. Install bumper ① to mounting brackets.

- a. **For Kit PN 2881627:** Install bumper weldment ① to bumper brackets (LH ②, RH ③) using screws ⑥ and nuts ⑦ as shown. Torque nuts ⑦ to specification.

TORQUE

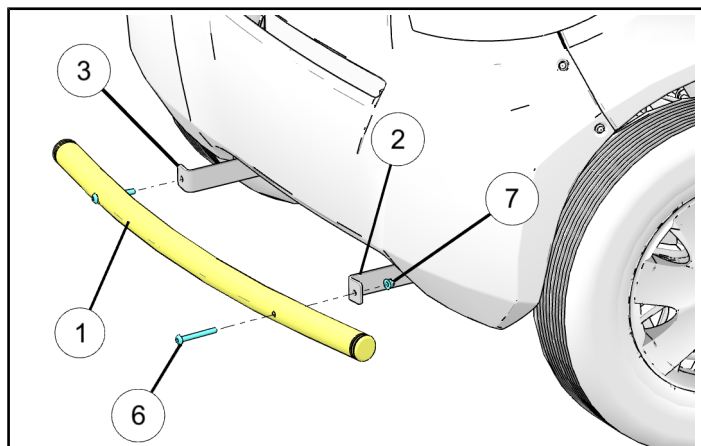
Bumper Mounting Nut ⑥:
10 ft-lbs (13.5 N·m)



- b. **Kit PN 2881629:** Install bumper ① to bumper brackets (LH ②, RH ③) using screws ⑥ and nuts ⑦ as shown. Torque nuts ⑦ to specification.

TORQUE

Bumper Mounting Nut ⑥:
10 ft-lbs (13.5 N·m)



FEEDBACK FORM

A feedback form has been created for the installer to provide any comments, questions or concerns about the installation instructions. The form is viewable on mobile devices by scanning the QR code or by clicking [HERE](#) if viewing on a PC.

