

REAR BUMPER KIT



P/N 2881628; 2881630

APPLICATION

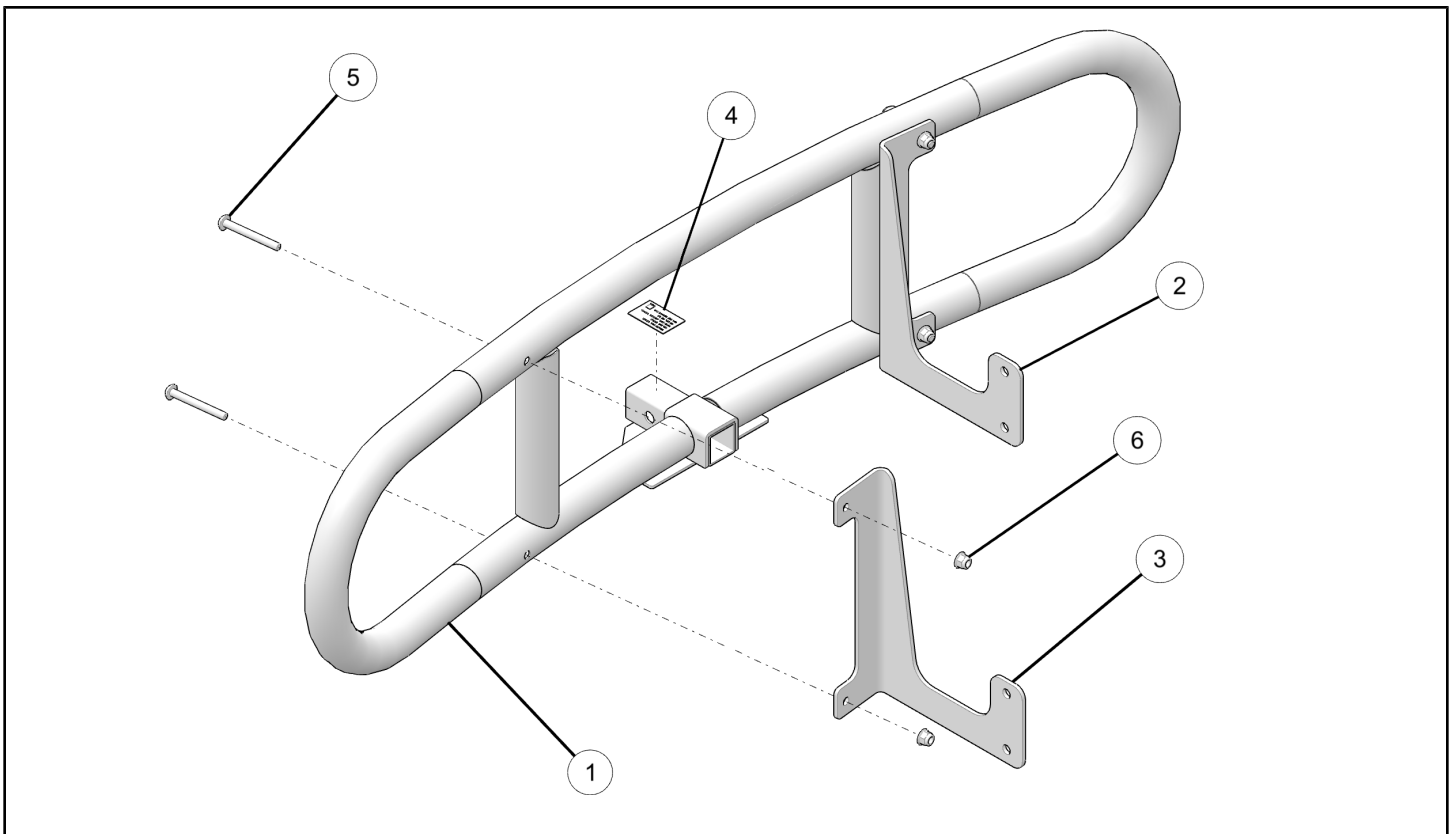
2016 GEM E2, E4, and E6

BEFORE YOU BEGIN

Read these instructions and check to be sure all parts and tools are accounted for. Please retain these installation instructions for future reference and parts ordering information.

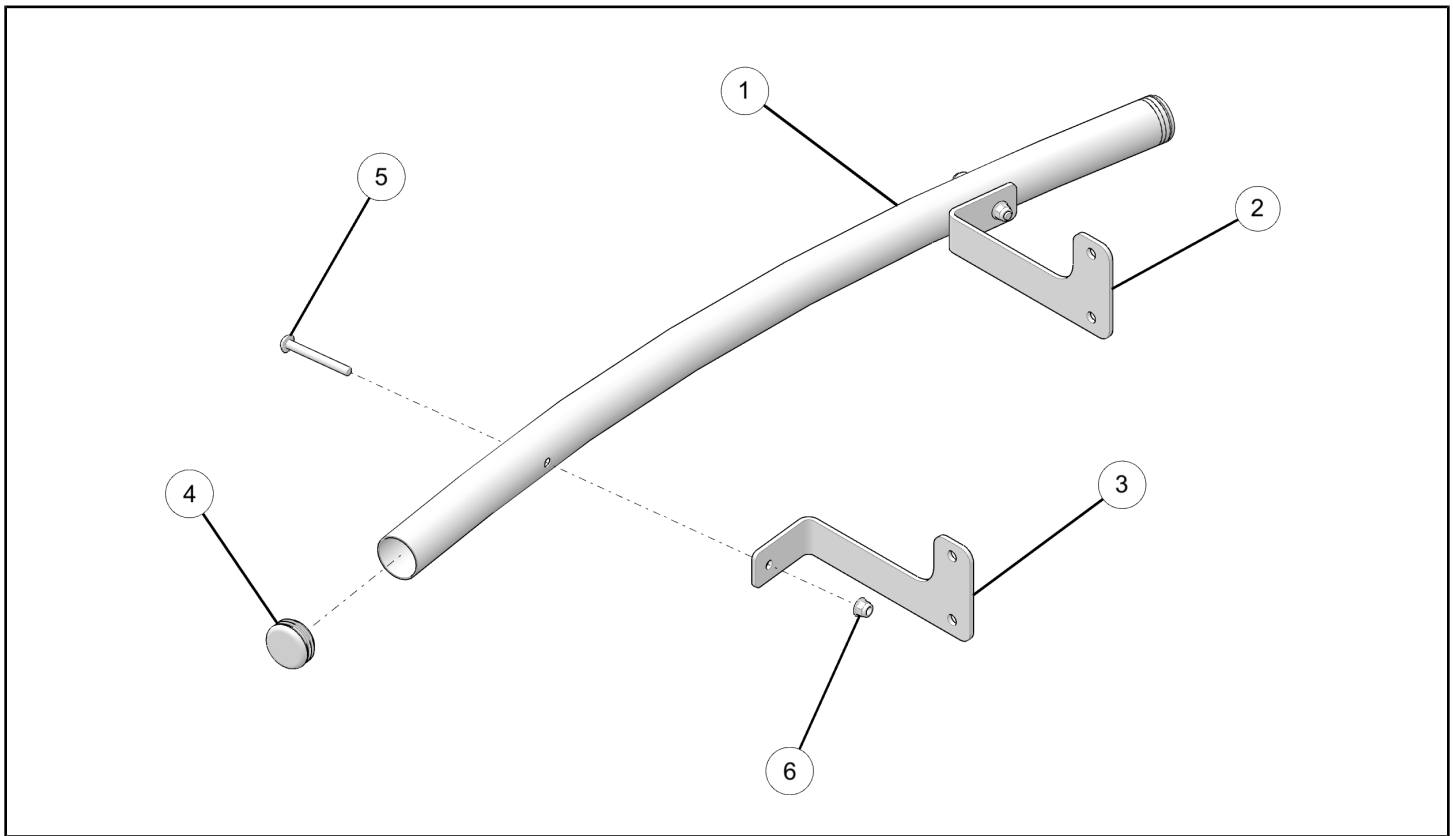
KIT CONTENTS

Kit PN 2881628 includes:



REF	QTY	PART DESCRIPTION	PART NUMBER
1	1	Rear Bumper, Rugged	1022809
2	1	Bracket, Rear Bumper, Rugged, LH	5263293
3	1	Bracket, Rear Bumper, Rugged, RH	5263294
4	1	Hitch, Decal	7184272
5	4	Screw Hex Flange - M8 X 1.25 X 65	7520535
6	4	Nut - M8 X 1.25	7547454
	1	Instructions	9926719

Kit PN 2881630 includes:



REF	QTY	PART DESCRIPTION	PART NUMBER
1	1	Tube Bumper, Premium	5339978
2	1	Bracket, Rear Bumper, Premium, LH	5263289
3	1	Bracket, Rear Bumper, Premium, RH	5263290
4	2	Bumper Cap	5434191
5	2	Screw - M8 X 1.25 X 65	7520536
6	2	Nut - M8 X 1.25	7547454
	1	Instructions	9926719

TOOLS REQUIRED

- Metric Wrench Set
- Metric Socket Set and Ratchet

IMPORTANT

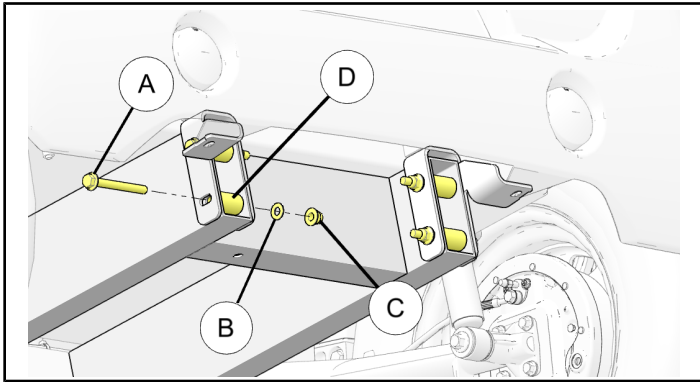
Your REAR BUMPER KIT is exclusively designed for your vehicle. Please read the installation instructions thoroughly before beginning. Installation is easier if the vehicle is clean and free of debris. For your safety, and to ensure a satisfactory installation, perform all installation steps correctly in the sequence shown.

ASSEMBLY TIME

Approximately 10 minutes

INSTALLATION INSTRUCTIONS

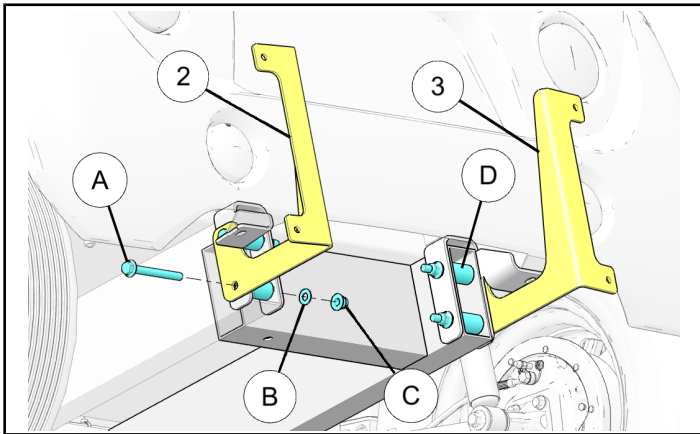
1. Place vehicle in "PARK". Turn key to "OFF" position and remove from vehicle.
2. Remove four bolts (A), washers (B), spacers (D), and nuts (C) from chassis tube. Retain hardware for new rear bumper installation.



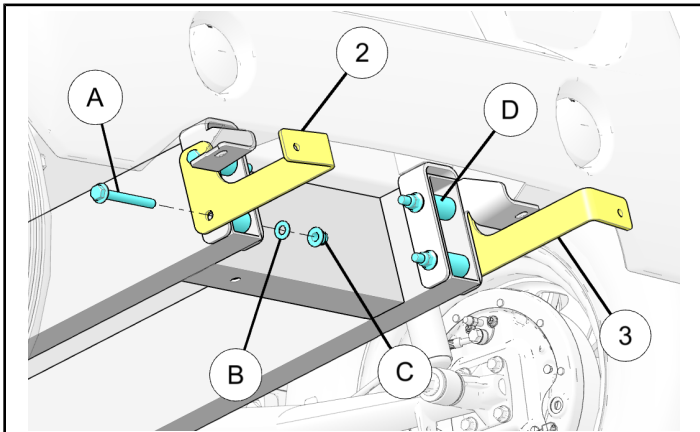
3. Install bumper brackets (LH ②, RH ③) to chassis tube using retained screws (A), washers (B), spacers (D), and nuts (C) as shown. Torque nuts (C) to specification.

TORQUE
37 lb-ft (50 Nm)

For Kit PN 2881628

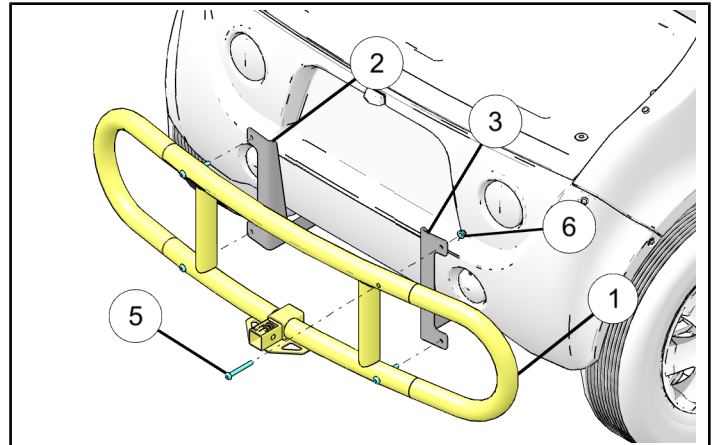


For Kit PN 2881630



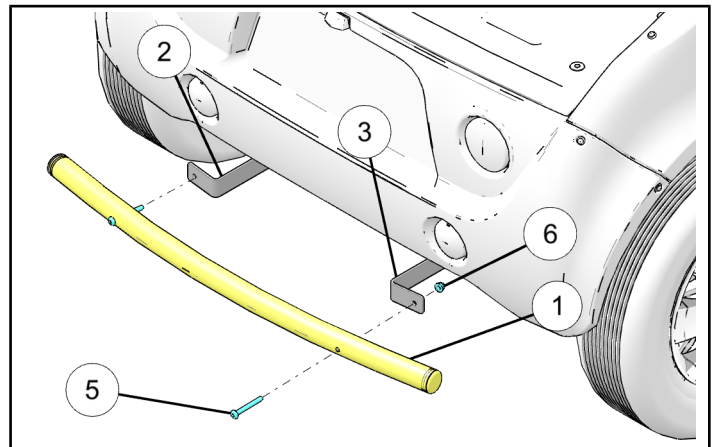
4. Install bumper weldment ① to mounting brackets.
 - a. **For Kit PN 2881628:** Install bumper weldment ① to bumper brackets (LH ②, RH ③) using screws ⑤ and nuts ⑥ as shown. Torque nuts ⑥ to specification.

TORQUE
10 lb-ft (13.55 Nm)



- b. **For Kit PN 2881630:** Install bumper weldment ① to bumper brackets (LH ②, RH ③) using screws ⑤ and nuts ⑥. Torque nuts ⑥ to specification.

TORQUE
10 lb-ft (13.55 Nm)



CAUTION
Hitch NOT equipped for On-Road Towing.
DO NOT use on Road.
Trailer Max. Weight: 1100 lbs. (499 Kg).
Hitch Max. Vertical Weight: 150 lbs. (68 Kg).
DO NOT exceed GVW.