

LINKSBACK KIT



P/N 2881634

APPLICATION

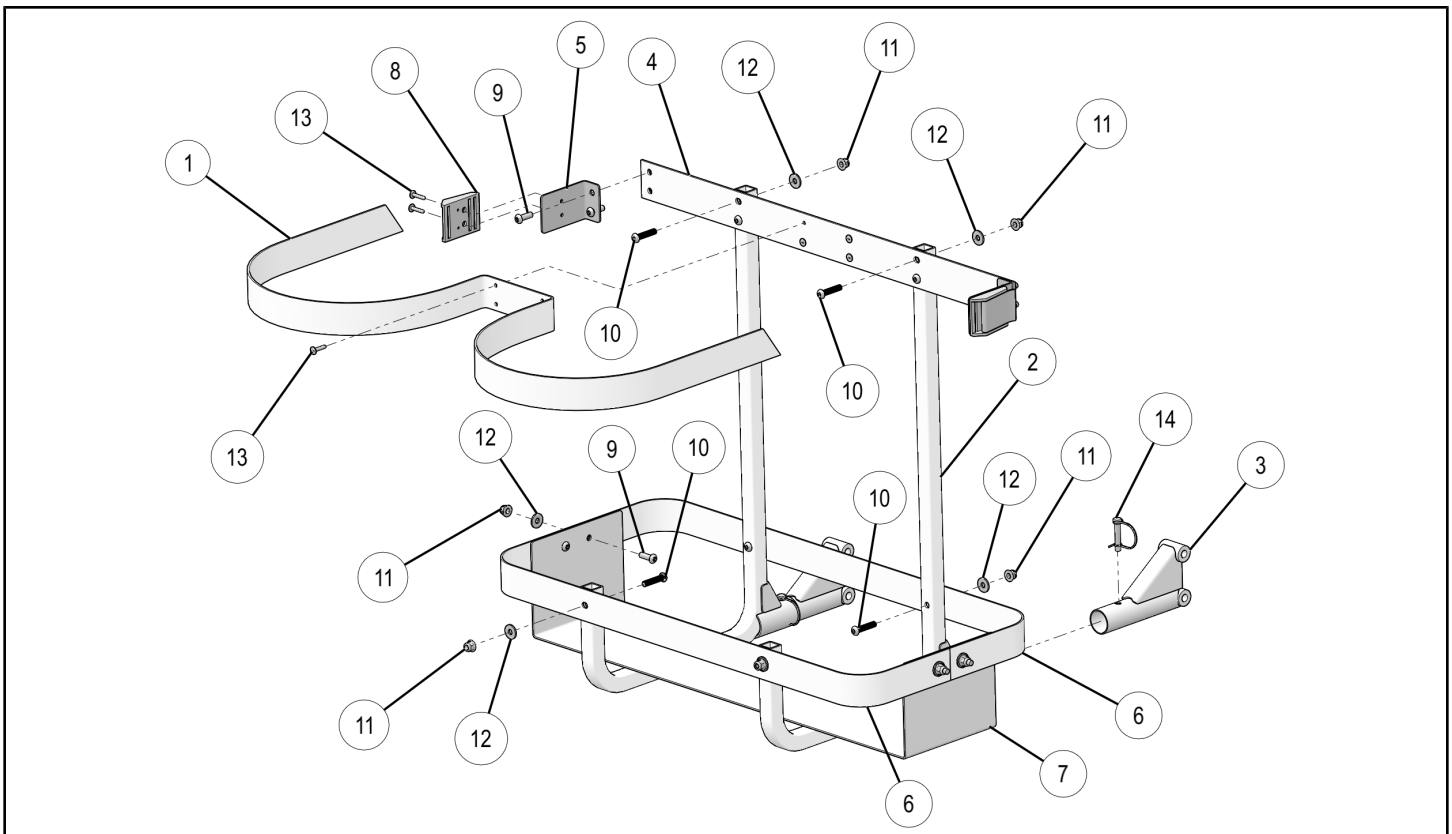
2016 GEM E2, E4 and E6

BEFORE YOU BEGIN

Read these instructions and check to be sure all parts and tools are accounted for. Please retain these installation instructions for future reference and parts ordering information.

KIT CONTENTS

This Kit includes:



REF	QTY	PART DESCRIPTION	PART NUMBER
1	1	Strap, Golf bag	2687024
2	2	Lower Linksback Weldment	1021460
3	2	Linksback Mounting Weldment	1021959
4	1	Support Bracket	5261340
5	2	Outer Bracket Strap	5261801
6	2	Rear Bracket, Bag	5261803
7	1	Lower Support Bracket	5261805
8	2	Bag Buckle, Retainer	5439672

REF	QTY	PART DESCRIPTION	PART NUMBER
9	8	Screw, Torx® - M8 X 1.25 X 25	7519728
10	8	Screw, Button - M8 X 40	7520160
11	16	Nut, Hex Flange - M8 X 1.25	7547454
12	16	Washer - 0.327 X 0.875 X 0.090	7555960
13	8	Rivet	7621479
14	2	Hitch Pin, Tab	7661962
	1	Instructions	9926723

TOOLS REQUIRED

- Safety Glasses
- Torx® Set and Ratchet

IMPORTANT

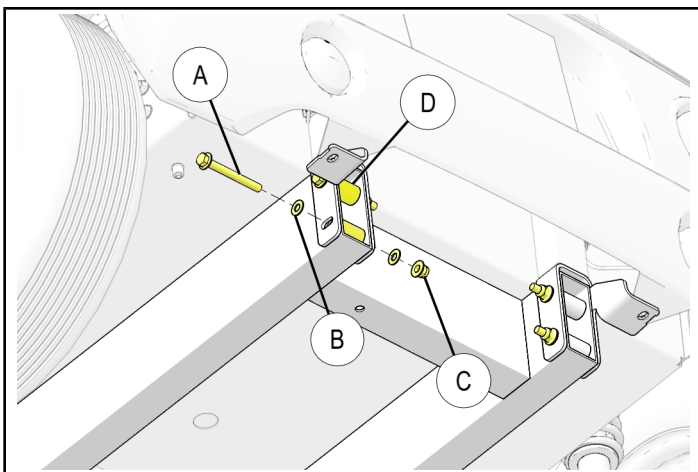
Your LINKSBACK KIT is exclusively designed for your vehicle. Please read the installation instructions thoroughly before beginning. Installation is easier if the vehicle is clean and free of debris. For your safety, and to ensure a satisfactory installation, perform all installation steps correctly in the sequence shown.

ASSEMBLY TIME

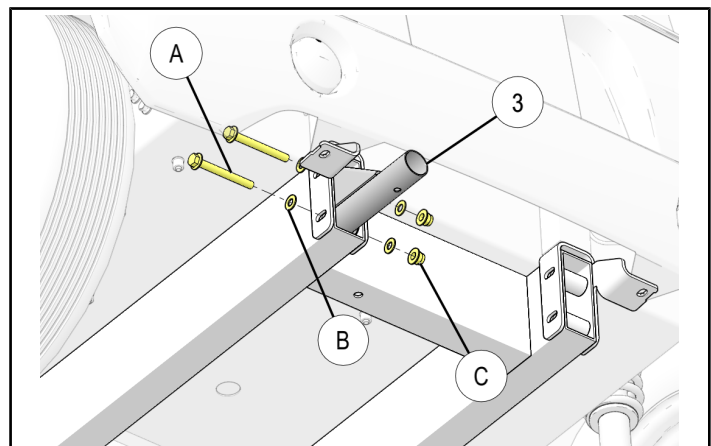
Approximately 45 minutes

INSTALLATION INSTRUCTIONS

1. Place vehicle in "PARK". Turn key to "OFF" position and remove from vehicle.
2. Remove stock four screws (A) and spacers (D), relevant washers (B), and nuts (C) from rear bracket of lower extrusions. Retain hardware for reuse.
3. Install linksback mounting weldment ③ through the rear bracket of lower extrusion and secure mount with screws (A), washers (B), and M10 nuts (C) removed in Step 2, as shown.

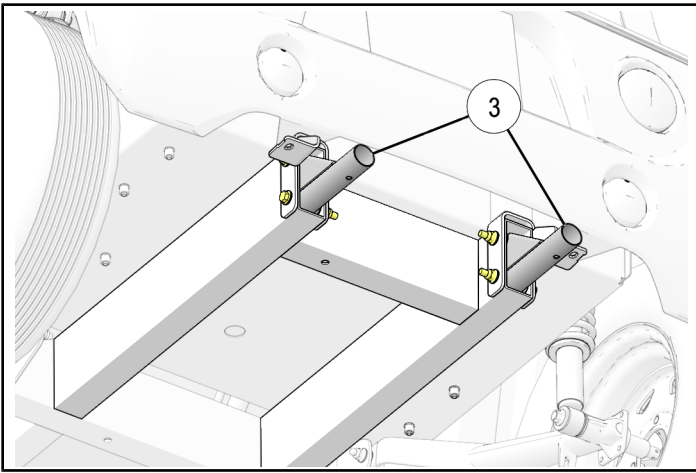


TORQUE
37 ft. lbs. (50 Nm)

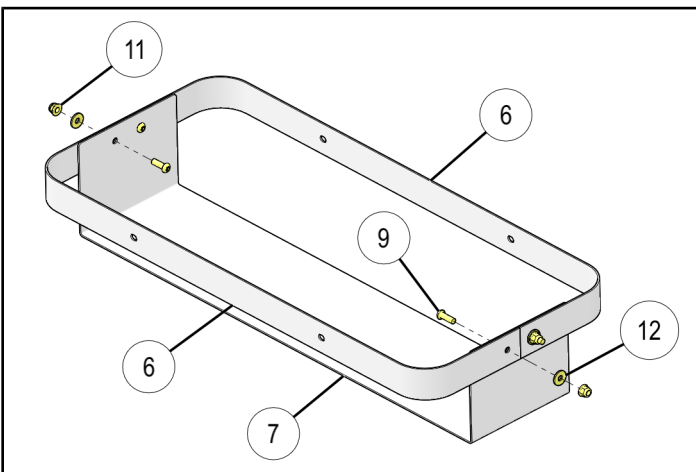
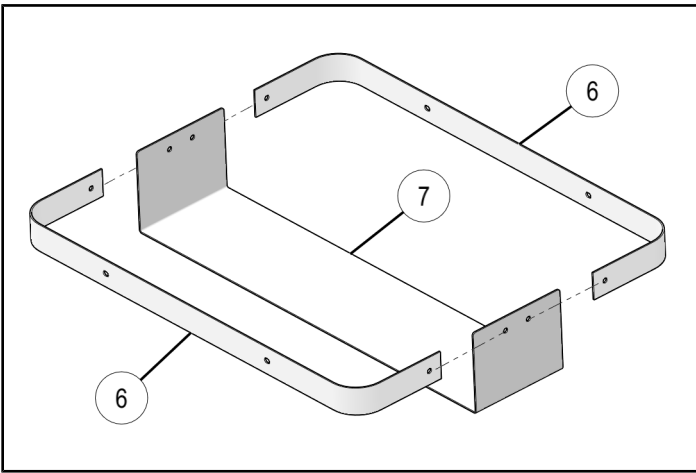


NOTE
If linksback mounting weldment is ever removed, spacers need to be reinstalled

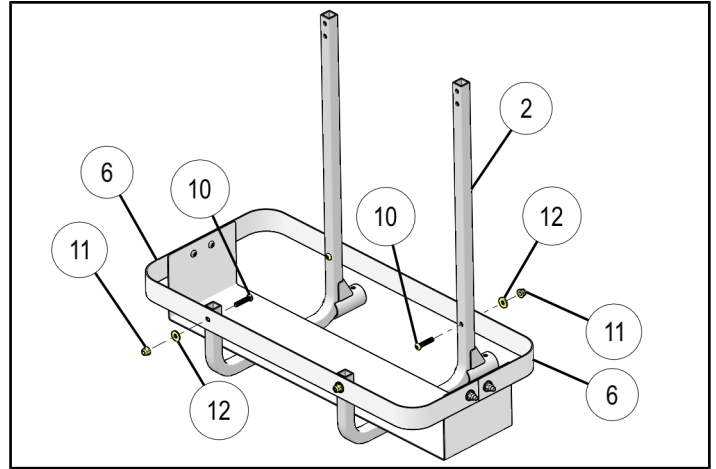
4. Repeat Step to install other mounting ③.



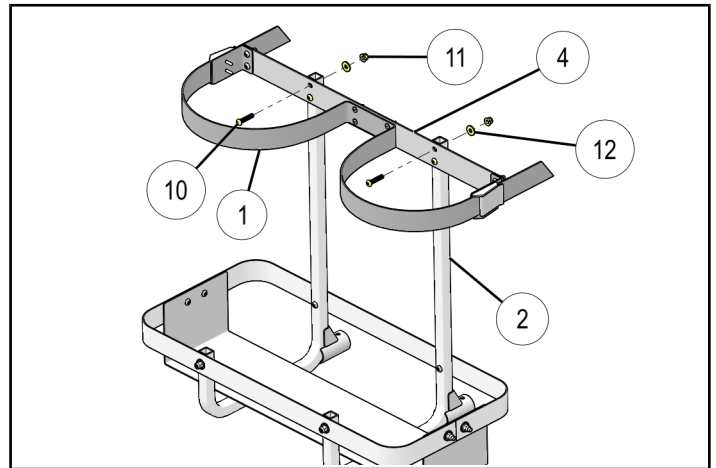
5. Assemble the rear and lower support brackets ⑥ ⑦ by aligning the mounting holes. Secure the assembly with four Torx® screws ⑨, washers ⑫, and nuts ⑪ as shown.



6. Mount the lower linksback weldment ② to rear brackets ⑥ by using four M8 screws ⑩, washers ⑫, and nuts ⑪ as shown.



7. Install the strap ① attached support bracket assembly ④ with lower linksback ② by using four M8 screws ⑩, washers ⑫, and nuts ⑪ as shown.



8. Tighten all screws to specification.

TORQUE

17 ft. lbs. (23 Nm)

9. Engage lower linksback ② to the mountings ③ and lock with hitch pins ⑭ as shown.

