




## Service Instructions

### Framed Canvas Door Installation Sedan – e6

#### Table of Contents

<b>Procedure:</b> .....	1
<b>Parts List:</b> .....	11
<b>Diagrams:</b> .....	12

#### Procedure:

<p>1. Lay out all materials included in kit on to clean work area.</p>	<ul style="list-style-type: none"><li>▪ Unpack hardware and roll out the canvas side curtains.</li></ul> <p><b><u>NOTE:</u> Careful not to have any sharp objects lying around so as not to harm the clear plastic window of the doors or the acrylic rear window.</b></p>
<p>2. Begin by installing the valance to the vehicle. Attach the rear snap.</p> 	<ul style="list-style-type: none"><li>▪ Put the valance all the way down against the side panel on the rear of the roof rail, as shown just above side/back panel.</li><li>▪ Mark the centerline of the snap on the rail.</li><li>▪ Drill so that the snap will be flush with the edge of the rail, (about 1/2" on center).</li><li>▪ Use a 1/8" drill. Secure the snap using a Phillips screwdriver.</li></ul> <p><b><u>HINT:</u> A rubber mallet may be used to tap the head of the snap on the canvas to mark a location on the rail.</b></p> <ul style="list-style-type: none"><li>▪ See picture to left.</li></ul>

3. Attach the front snap.

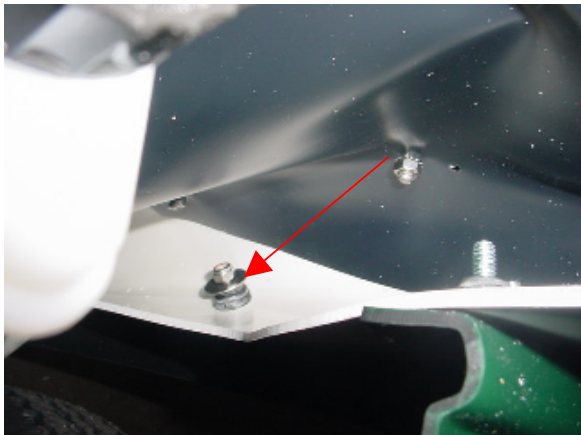


- Measure up **2-5/8"** from lower window cross member or pull until it touches the top of the side panel. This will vary per vehicle.
- Mark the centerline of the snap on the rail.
- Use a 1/8" drill. Secure the snap using a Phillips screwdriver.

**HINT:** A rubber mallet may be used to tap the head of the snap on the canvas to mark a location on the rail.

- See picture to left.

4. Install the shock cord & mounting hardware.



- Locate the bolt behind the mudguard. Second mounting bolt. Cord should be straight up and down, perpendicular.
- Install and secure the provided flat washer and nylok nut.
- Stretch the bungee cord from the front, down along the inside of the body side panel and loop it over the existing mudguard mounting bolt as shown.

**HINT:** It is necessary to install the provided 1/4" flat washer and nylok nut to the bolt first so the bungee cord doesn't slide off the bolt.

- See picture to left.

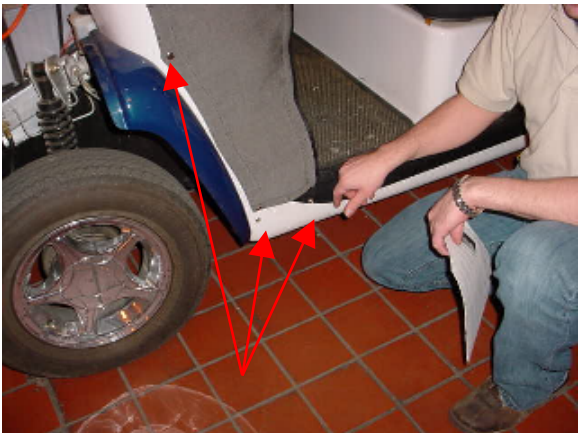
**NOTE:** Verify that the bungee cord does not come in contact with the hood, as it will cause damage over time.

5. Install the canvas valance.



- Stretch valance over top of rail. Start from rear. Slide up over top of roof rail.
- See picture to left, (4-pass shown). Installs the same for 6-pass models.

6. Next, secure the lower front valance snaps.



- **Lower snaps (3 places):** Pull taut and mark locations. The canvas should follow the contour of the mudguard. Bottom two (2) snaps first, then upper-middle snap last.

**HINT:** Adding a little tension to the fabric when locating the snaps can pull out most wrinkles in the door. Avoid over tensioning as it could cause the door not to function properly later. Over tensioning can be seen by the door opening more than 3” when adding tension. (Zip doors on to valance at this time to verify, remove when finished.)

- Secure using hardware and snaps provided.
- See picture to left.



7. Install Velcro on to the roof rail.

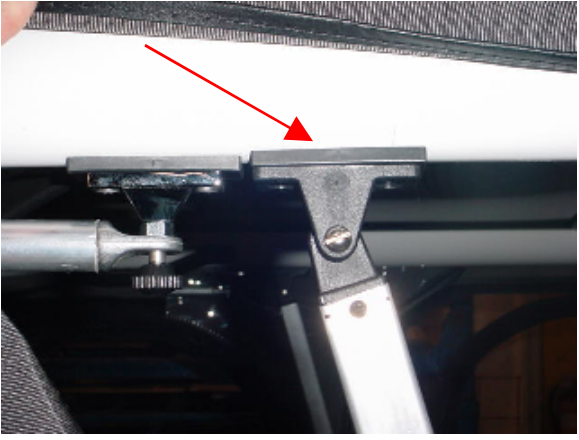


- **6-pass Models** – Four (4) locations, front, middle/front, middle/rear, rear). The Velcro strips should align to the Velcro stitched in to the valance.
- Prep the area first with isopropyl alcohol for better adhesion.

\* continued on next page

- See picture to left, (rear shown).

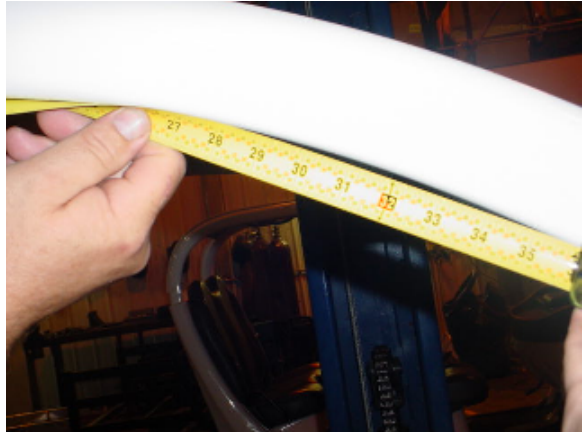
**NOTE:** Secure the top snap(s) of the

	<p>canvas valance on the roof rail after applying the Velcro.</p>
<p>8. Attach top valance snaps.</p>	<ul style="list-style-type: none"> <li>▪ Locate the snap(s) on the top of the valance across the roof rail. <b>(2 for 6-pass models.)</b></li> <li>▪ Mark the mount location of the snap.</li> <li>▪ Drill and secure the snap using the hardware provided and Phillips screwdriver.</li> </ul>
<p>9. Locate upper rear door hinge bracket mount.</p> 	<ul style="list-style-type: none"> <li>▪ Measure <b>31"</b> forward following the contour of the roof rail from the rear foot of the roof rail and mark a hole location.</li> </ul> <p><b><u>NOTE:</u></b> This is the <b><u>REAR</u></b> hole of the rear door hinge bracket.</p> <ul style="list-style-type: none"> <li>▪ See picture to left.</li> <li>▪ Measure forward <b>1-7/16"</b> and mark a hole location for the front hole of the hinge bracket. (You may also mount the bracket and use it as a fixture/jig for the front mounting hole.)</li> </ul> <p><b><u>NOTE:</u></b> Prior to drilling holes verify that the marked hole locations line up with the black plastic hinge shim. The hinge bracket shim is contoured to fit the rail in <b><u>ONLY</u></b> one fashion. Remark holes if necessary.</p> <ul style="list-style-type: none"> <li>▪ Drill holes with 5/32" bit.</li> <li>▪ Mount and secure the upper hinge bracket to the roof rail using hardware provided and Phillips screwdriver.</li> </ul>

<p>10. Locate upper b-pillar/door support bracket mount.</p> 	<ul style="list-style-type: none"> <li>▪ Measure <b>1-7/16"</b> from the last mount hole and mark hole location for rear support bracket.</li> <li>▪ Measure <b>1-1/2"</b> from last mount hole and mark hole location for front support bracket.</li> <li>▪ Drill holes with 5/32" bit.</li> <li>▪ Mount and secure the upper b-pillar/door support bracket to the roof rail using hardware provided and Phillips screwdriver.</li> <li>▪ See picture to left.</li> </ul> <p><b>NOTE:</b> For 6-pass install proceed to the next step.</p>
<p>11. Locate upper hinge (<b>middle, 6-pass</b>) bracket mount.</p> 	<ul style="list-style-type: none"> <li>▪ Measure <b>24-7/16"</b> from the last mount hole and mark hole location for middle hinge bracket.</li> <li>▪ Measure <b>1-7/16"</b> from last mount hole and mark front hole of hinge bracket.</li> <li>▪ Drill holes with 5/32" bit.</li> <li>▪ Mount and secure the upper hinge bracket to the roof rail using hardware provided and Phillips screwdriver.</li> <li>▪ See picture to left.</li> </ul>
<p>12. Locate upper b-pillar/door support (<b>middle, 6-pass</b>) bracket mount.</p> 	<ul style="list-style-type: none"> <li>▪ Measure <b>1-7/16"</b> from the last mount hole and mark hole location for rear support bracket.</li> <li>▪ Measure <b>1-1/2"</b> from last mount hole and mark hole location for front support bracket.</li> <li>▪ Drill holes with 5/32" bit.</li> <li>▪ Mount and secure the upper b-pillar/door support bracket to the roof rail using hardware provided and Phillips screwdriver.</li> <li>▪ See picture to left.</li> </ul>
<p>13. Locate upper front door hinge bracket</p>	<ul style="list-style-type: none"> <li>▪ Measure <b>31"</b> from the last mount hole</li> </ul>



mount.



and mark hole location for rear hole of front hinge bracket.

- Measure **1-7/16"** from last mount hole and mark front hole of hinge bracket.
- Drill holes with 5/32" bit.
- Mount and secure the upper hinge bracket to the roof rail using hardware provided and Phillips screwdriver.
- See picture to left.

14. Locate rear striker bracket mount.

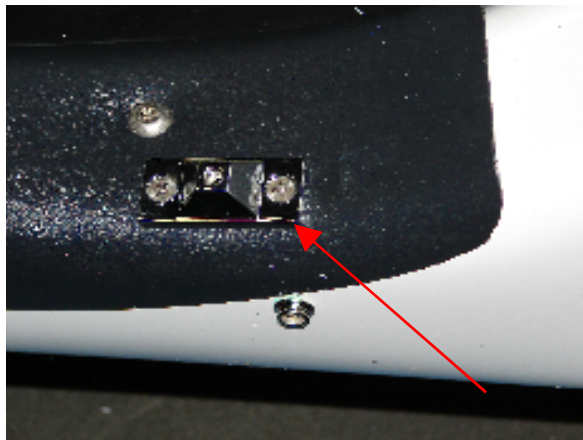


- Measure **17-1/4"** down from the top of the side panel and mark hole location for top hole of striker bracket.
- Measure **1-11/16"** down from last mount hole and mark hole location for bottom hole of striker bracket.

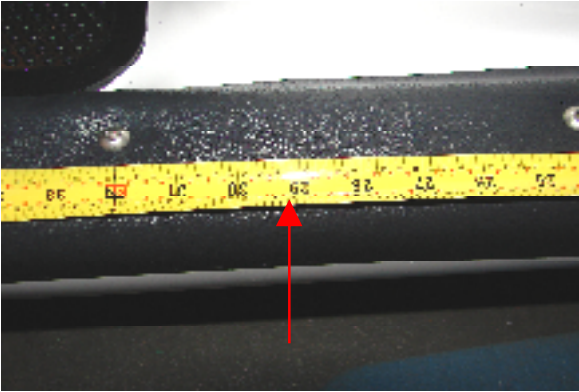
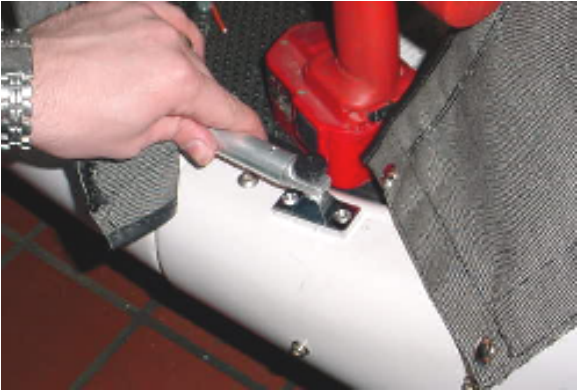

**NOTE: DO NOT install striker at this time! The actual striker mount location will be better determined at a later step aligning it to the rear door latch. THIS STEP IS JUST A GUIDELINE.**

- The mark will be used to locate the lower mount.
- See picture to left.

15. Locate lower front door hinge bracket mount.



- Measure **27-3/4"** from the top edge of the body side panel below the side mirror.
- Mark hole location for front hinge bracket.
- Measure **1-7/16"** from last mount hole.
- Mark hole location for front hinge bracket.
- Drill holes with 5/32" bit.
- Mount and secure lower front hinge bracket to floor pan/side panel using hardware provided and Phillips screwdriver.
- See picture to left.

<p>16. Locate lower front b-pillar/door support bracket mount.</p> 	<ul style="list-style-type: none"> <li>▪ Measure <b>29-3/8"</b> from last mount hole.</li> <li>▪ Mark hole location for b-pillar support bracket.</li> <li>▪ Measure <b>1-1/2"</b> from last mount hole.</li> <li>▪ Mark hole location for b-pillar support bracket.</li> <li>▪ Drill holes with 5/32" bit.</li> <li>▪ Secure the brackets using hardware provided and Phillips screwdriver.</li> <li>▪ See picture to left.</li> </ul>
<p>17. Locate lower middle hinge bracket mount.</p> 	<ul style="list-style-type: none"> <li>▪ Measure <b>1-1/2"</b> from last mount hole.</li> <li>▪ Mark hole location for hinge bracket.</li> <li>▪ Measure <b>1-7/16"</b> from last mount hole.</li> <li>▪ Mark hole location for hinge bracket.</li> <li>▪ Drill holes with 5/32" bit.</li> <li>▪ Secure the brackets using hardware provided and Phillips screwdriver.</li> <li>▪ See picture to left.</li> </ul>
<p>18. Locate lower rear b-pillar/door support bracket mount.</p> 	<ul style="list-style-type: none"> <li>▪ Measure <b>29-3/8"</b> from last mount hole.</li> <li>▪ Mark hole location for b-pillar support bracket.</li> <li>▪ Measure <b>1-1/2"</b> from last mount hole.</li> <li>▪ Mark hole location for b-pillar support bracket.</li> <li>▪ Drill holes with 5/32" bit.</li> <li>▪ Secure the brackets using hardware provided and Phillips screwdriver.</li> <li>▪ See picture to left.</li> </ul>
<p>19. Locate lower rear hinge bracket mount.</p>	<ul style="list-style-type: none"> <li>▪ Measure <b>1-1/2"</b> from last mount hole and mark hole location for front hinge bracket.</li> </ul> <p>* continued on next page</p>



- Measure **1-7/16"** from last mount hole.
- Mark hole location for rear hinge bracket.
- Drill holes with 5/32" bit.
- Secure the brackets using hardware provided and Phillips screwdriver.
- See picture to left.

20. Attach b-pillar/door support.

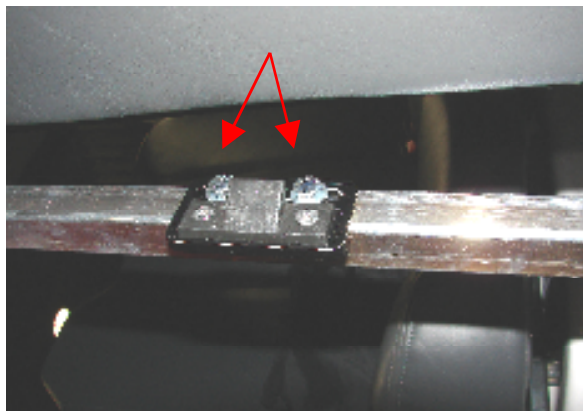


- Attach at upper and lower b-pillar/door support mounting brackets using hardware provided.

**NOTE:** B-pillar supports should be pre-assembled. If not, use the small black Phillips screws provided in the kit, attach the upper and lower black plastic mounts into the ends of the aluminum support tube. Screws should face outward from the vehicle as shown. Also, the striker/latch assemblies should be pre-assembled and attached to the supports as well. If not, use the small bolts and nuts provided in the kit, attach the striker plate and striker as shown.



- With valance already attached, zip the valance to the b-pillar/door support.
- See pictures to left & below.





21. Insert doorframes in to canvas doors.






22. Attach the front door on to the vehicle.

- Pre-assembled door frames should fit in to each canvas door by sliding them through the canvas and then zipping them shut.
- Pull nylon straps and door knob through slits in canvas.
- See pictures to left and below.

**NOTE:** Be sure the black rubber trim is installed to the aluminum door frame latch radius so as not to harm the canvas or plastic. (See first picture, note arrow)

- Attach door on to vehicle. Latch door on to striker of front b-pillar; adjust each component (latch & striker) as necessary.

\* continued on next page

	<ul style="list-style-type: none"> <li>▪ See picture to left.</li> </ul> <p><b><u>NOTE:</u> For 6-pass install proceed to the next step.</b></p>
<p>23. Attach middle door on to the vehicle.</p> 	<ul style="list-style-type: none"> <li>▪ Attach door on to vehicle. Latch door on to striker of middle b-pillar; adjust each component (latch &amp; striker) as necessary.</li> <li>▪ Draw canvas taut and secure upper snap to roof rail. <b>DOOR SHOULD BE IN THE CLOSED POSITION.</b></li> <li>▪ Mark mount location of snap, drill with a 1/8" bit and secure with hardware provided and Phillips screwdriver.</li> <li>▪ See picture to left.</li> </ul>
<p>24. Attach the rear door on to the vehicle.</p> 	<ul style="list-style-type: none"> <li>▪ Attach door on to vehicle. Latch door on to striker of rear back panel; adjust each component (latch &amp; striker) as necessary.</li> <li>▪ Draw canvas taut and secure upper snap to roof rail. <b>DOOR SHOULD BE IN THE CLOSED POSITION.</b></li> <li>▪ Mark mount location of snap, drill with a 1/8" bit and secure with hardware provided and Phillips screwdriver.</li> <li>▪ See picture to left.</li> </ul>
<p>25. Door installation complete.</p>	<ul style="list-style-type: none"> <li>▪ Done.</li> </ul>

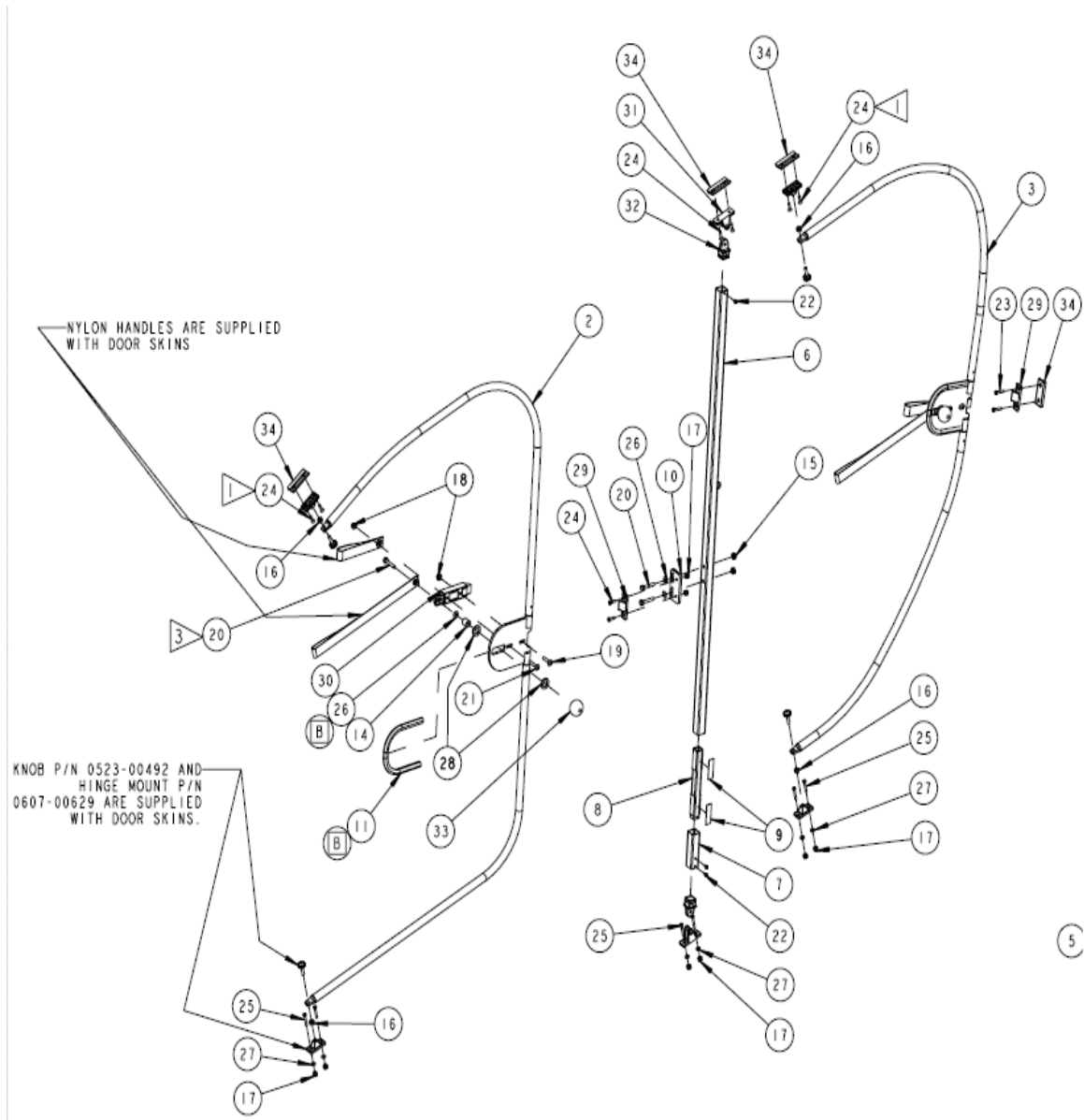
[Go to Top](#)

**Parts List:****0107-02083 ASSY, DOOR – FRAMED CANVAS 6P (GREY)****0107-02084 ASSY, DOOR – FRAMED CANVAS 6P (BLUE)****0107-02085 ASSY, DOOR – FRAMED CANVAS 6P (GREEN)****0107-02086 ASSY, DOOR – FRAMED CANVAS 6P (BLACK)**

<b>ITEM</b>	<b>PART NO.</b>	<b>DESCRIPTION</b>	<b>QTY</b>
1	0107-01764	ASSY, FRAME - TOP FRONT DOOR SEMI-RIGID	2
2	0107-01765	ASSY, FRAME - BOTTOM FRONT DOOR SEMI-RIG	2
3	0107-01766	ASSY, FRAME - TOP REAR DOOR SEMI-RIGID	2
4	0107-01767	ASSY, FRAME - BOTTOM REAR DOOR SEMI-RIGI	2
5	0107-02068	ASSY, FRAME - TOP CNTR DOOR FRAMED CANVA	2
6	0107-02069	ASSY, FRAME - BTM CNTR DOOR FRAMED CANV	2
7	0207-00238	WLD, MOUNT - LATCH DOOR SEMI-RIGID	6
8	0307-03375	TUBE, B-PILLAR - BOTTOM DOOR SEMI-RIGID	4
9	0307-03376	TUBE, B-PILLAR - SLIDE DOOR SEMI-RIGID	4
10	0307-02109	PAD, WEAR	32
11	0307-02112	PLATE, MOUNT STRIKER	4
12	0307-02113	STRAP, HANDLE - DOOR SEMI-RIGID	6
13	0307-02114	STRAP, LATCH - DOOR SEMI RIGID	6
14	0307-02774	TUBE, B-PILLAR UPPER - DOOR	4
15	0350-02032	DECAL, WARNING DOOR	6
16	0350-02143	DECAL, OPEN - DOOR	6
17	0417-00233	TRIM, RUBBER EDGE- W/ ADHESIVE	6FT
18	0519-00510	BUSHING, ID 0.386 X OD 0.625 X 0.625 BL	6
19	0521-00050	NUT, HEX - NYLOCK - 1/4 - 20 UNC GR 5 ZI	2
20	0521-00071	NUT, KEPS - 1/4 - 20 UNC ZINC PLATED	8
21	0521-00099	NUT, HEX 1/4-20 UNC GRD 5 ZINC PLTD	12
22	0521-00493	NUT, HEX-SERRATED FLANGE - M6 X 1.0, ZNC	16
23	0522-00488	BOLT, M6 X 1.0 X 30 -BUTTON HEAD CAP ZP	10
24	0522-00496	BOLT, HEX-1/4 -20 UNCX1.50 LG, GR 5 ZN	14
25	0522-00509	BOLT, M6 X 1.0 X 35 - BUTTON HEAD CAP ZP	6
26	0523-00066	SCREW, PHIL PAN HD-#6 X 3/8 LG BLACK ST	8
27	0523-00177	SCREW, HI LOW -PHIL PAN #10 X 1 BLACK ZN	24
28	0523-00337	SCREW, 10-32x3/4 PH FL HD SS SELF THREAD	16
29	0523-00492	SCREW, MACHINE- THB 1/4 X 20 X .875 BLAC	12
30	0523-00577	STUD, SNAP - DOT SCREW TYPE # 8-15 X 3/8	14
31	0524-00062	WASHER, FLAT-1/4 .281 ID X.625 OD X.05ZP	14
32	0524-00315	WASHER, FENDER - .25 ID x 1.0 OD	2
33	0524-00498	WASHER, ID 0.631XOD 1.00X0.128 BLK NYLON	12

34	0607-00028	PLATE, STRIKER	6
35	0607-00629	MOUNT, HINGE - SEMIRIGID DOOR	12
36	0607-00633	LATCH, DOOR - SEMI-RIGID	6
37	0607-00636	MOUNT, BRACKET - B-PILLAR DOOR SEMI RIGI	8
38	0607-00637	MOUNT, END - B-PILLAR DOOR SEMI-RIGID	8
39	0607-00639	KNOB - FRAMED CANVAS DOOR	6
40	0607-00647	SHIM, ROOF RAIL - DOOR MOUNTING	12

**Diagrams:**



[Go to Top](#)