

HOOD RACK KIT



P/N 2882149

APPLICATION

Verify accessory fitment at Polaris.com.

NOTE

This Headache Rack Kit cannot be used with the Low Profile UPPER Front Bumper Kit (PN 2881525).

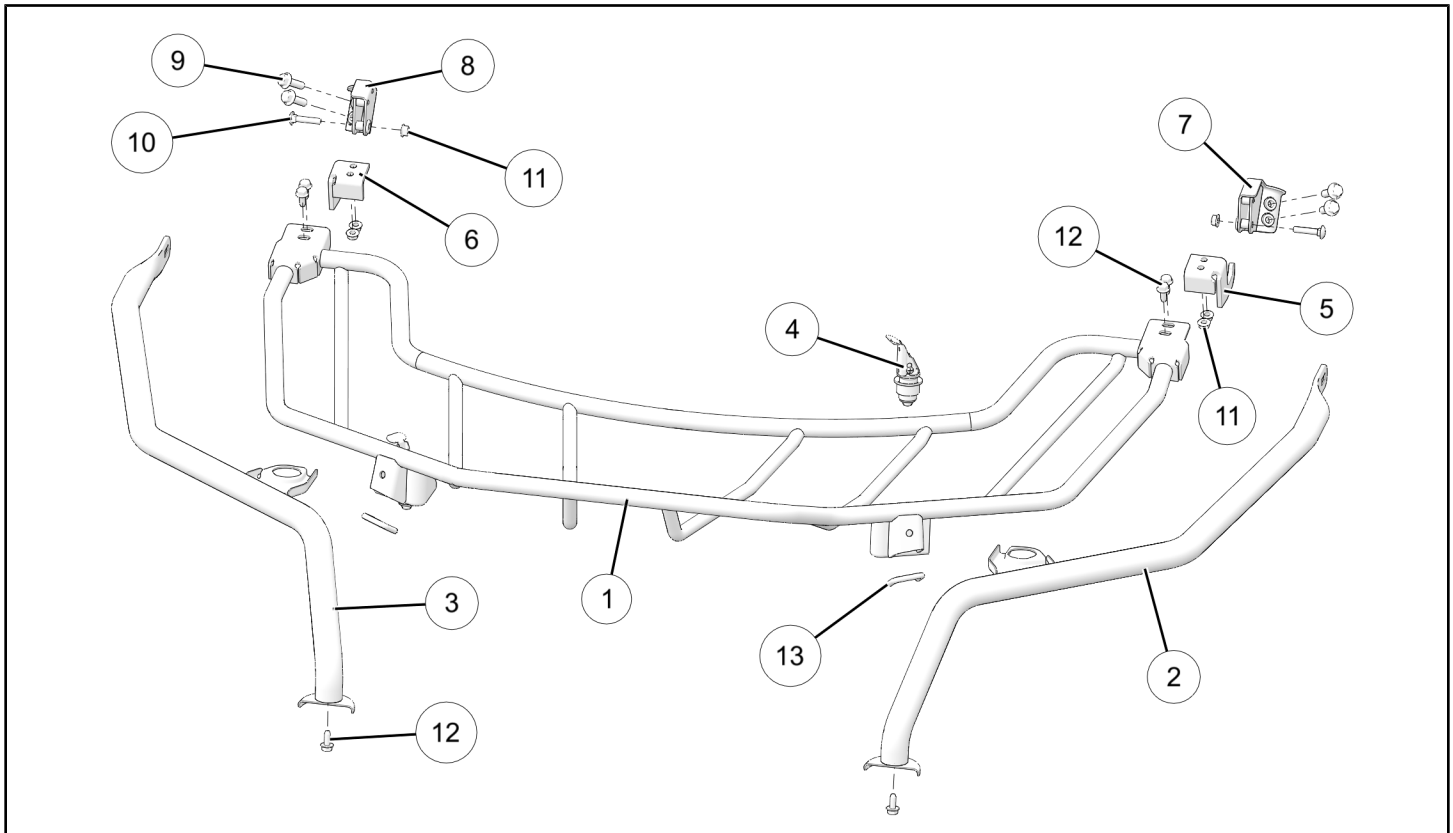
BEFORE YOU BEGIN

Read these instructions and check to be sure all parts and tools are accounted for. Please retain these installation instructions for future reference and parts ordering information.

KIT CONTENTS

This kit contains parts for installation of the headache rack only. Prior installation of the Low Profile Front Bumper Kit, PN 2881094 (or equivalent), is also required (sold separately).

This Kit includes:



REF	QTY	PART DESCRIPTION	PART NUMBER
1	1	Rack, Removable	-
2	1	Frame, LH	-
3	1	Frame, RH	-
4	2	Lock & Ride® Expansion Anchor	-
5	1	Hook, LH	-

REF	QTY	PART DESCRIPTION	PART NUMBER
6	1	Hook, RH	-
7	1	Bracket, Frame Mount, LH	-
8	1	Bracket, Frame Mount, RH	-
9*	4	Screw, Hex Flange - M10 X 1.25 X 55	-
10*	2	Bolt, Carriage - M8 X 1.25 X 40	-
11*	6	Nut, Hex Flange - M8 X 1.25	-
12*	6	Screw, Hex Flange - M8 X 1.25 X 20	-
13	2	Trim	-
	1	Instructions	9927303

Items marked (*) are included in Hardware Kit PN 2206427.

TOOLS REQUIRED

- Safety Glasses
- Socket Set, Metric
- Torque Wrench
- Wrench Set, Metric

IMPORTANT

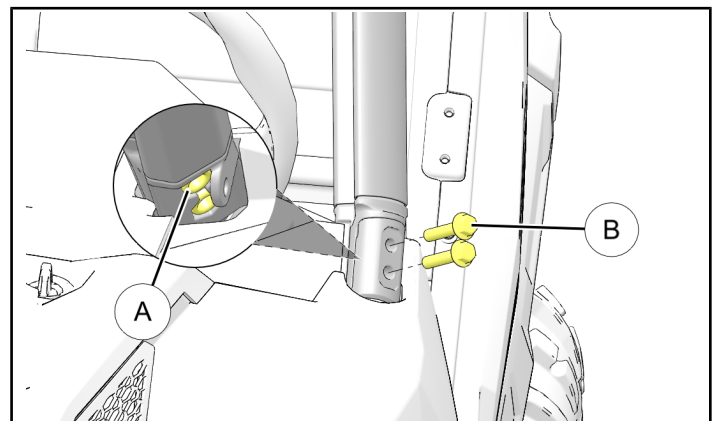
Your Hood Rack Kit is exclusively designed for your vehicle. Please read the installation instructions thoroughly before beginning. Installation is easier if the vehicle is clean and free of debris. For your safety, and to ensure a satisfactory installation, perform all installation steps correctly in the sequence shown.

ASSEMBLY TIME

Approximately 35 minutes

INSTALLATION INSTRUCTIONS

1. Place vehicle in "PARK". Turn key to "OFF" position and remove from vehicle.
2. Install LH frame ②.
 - a. Use tape (or equivalent) to prevent nuts (A) from falling out of left side ROPS fitting into upper fender/dash area, then remove two screws (B) as shown. Retain nuts. Screws will not be reused.



TIP

If Tip-Out Glass Windshield Kit (PN 2881108) is installed access can be improved by removing lower end of shocks and ball fittings. See instructions included with windshield kit for detail.

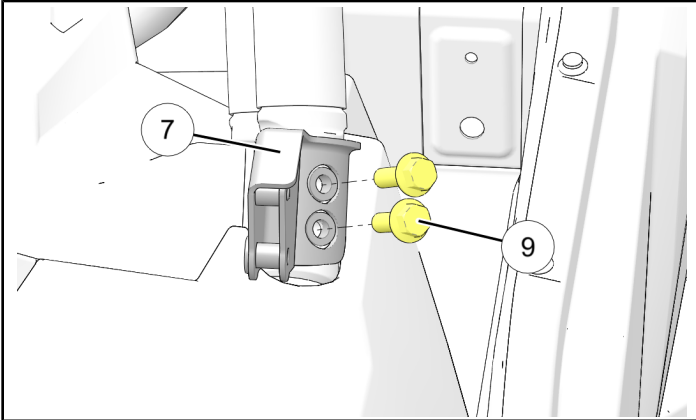
⚠ WARNING

Failure to torque fasteners as directed in next step will adversely affect ROPS integrity and may lead to personal injury or death in an accident.

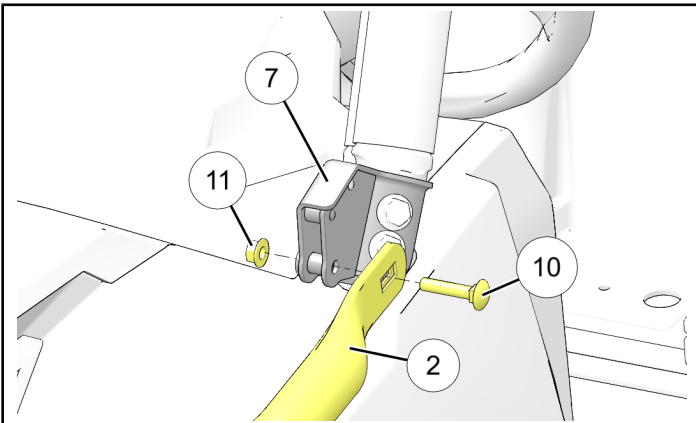
- b. Install left frame mount bracket ⑦ to ROPS using two each screws ⑨ and retained nuts (A). Torque to specification.

TORQUE

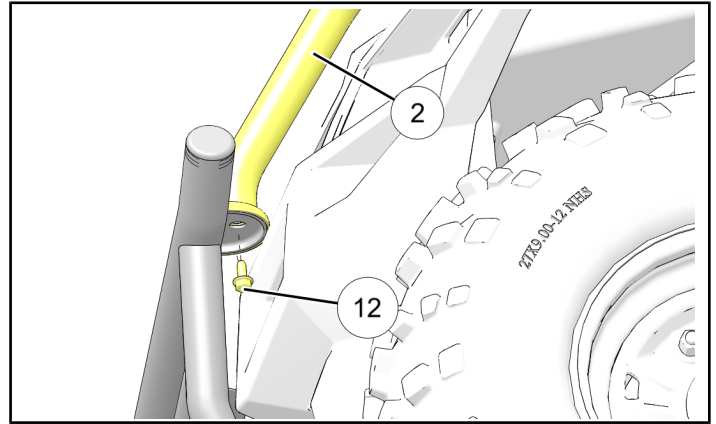
45 ft. lbs. (61 Nm)



- c. Loosely assemble left frame ② to frame mount bracket ⑦ using one each carriage bolt ⑩ and nut ⑪ as shown. Ensure proper orientation: frame and bolt head are on OUTBOARD side of mount bracket.



- d. Loosely install left frame ② to front bumper using one screw ⑫ as shown.

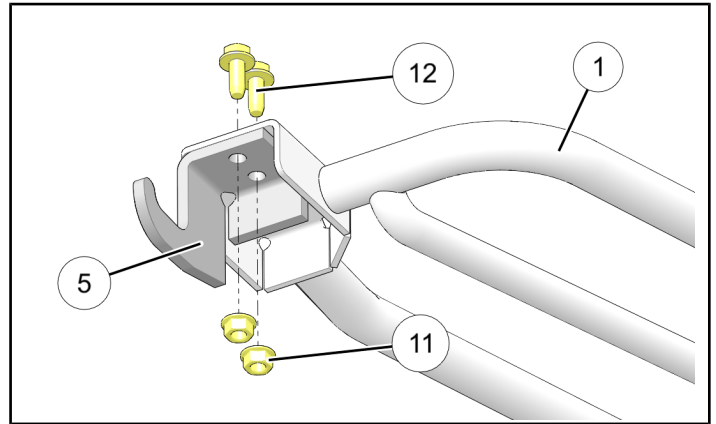


- e. Torque carriage bolt ⑩ and screw ⑫ to specification.

TORQUE

16 ft. lbs. (22 Nm)

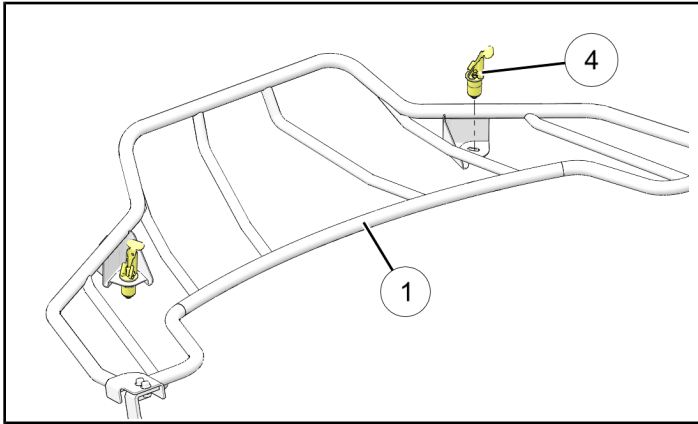
- 3. Repeat Step 2 for right frame ③ and right frame mount bracket ⑧.
- 4. Loosely install left hook ⑤ to removable rack ① using two each screws ⑫ and nuts ⑪ as shown. Repeat for right hook ⑥.



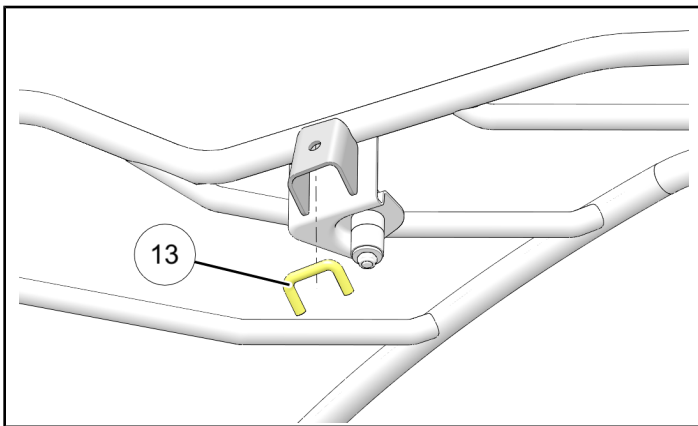
5. Install two LOCK and RIDE® expansion anchors ④ to removable rack ① as shown.

NOTE

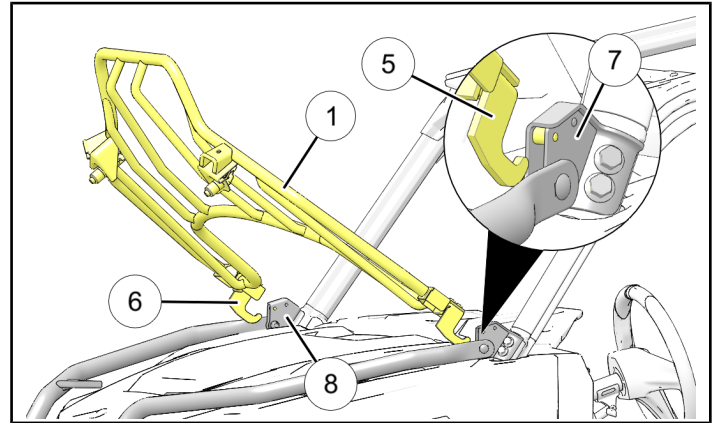
Refer to instructions included with LOCK and RIDE® expansion anchors.



6. Install trim ⑬ to front sides of expansion anchor mount brackets as shown.



7. Tip removable rack ① upward so hooks ⑤ and ⑥ can engage frame mount brackets ⑦ and ⑧ as shown, then lower rack, inserting expansion anchors ④ through frame mount holes.



8. Center removable rack ① between left and right frames, ensure expansion anchors ④ are fully seated, then depress upper cams to lock in place. If installation is loose, remove rack from vehicle, tighten nuts at base of expansion anchors, then reinstall.
9. Torque four screws ⑫ (installed in Step 4) to specification.

TORQUE

16 ft. lbs. (22 Nm)