

# ALUMINUM ROOF KIT



**P/N 2881105**

## APPLICATION

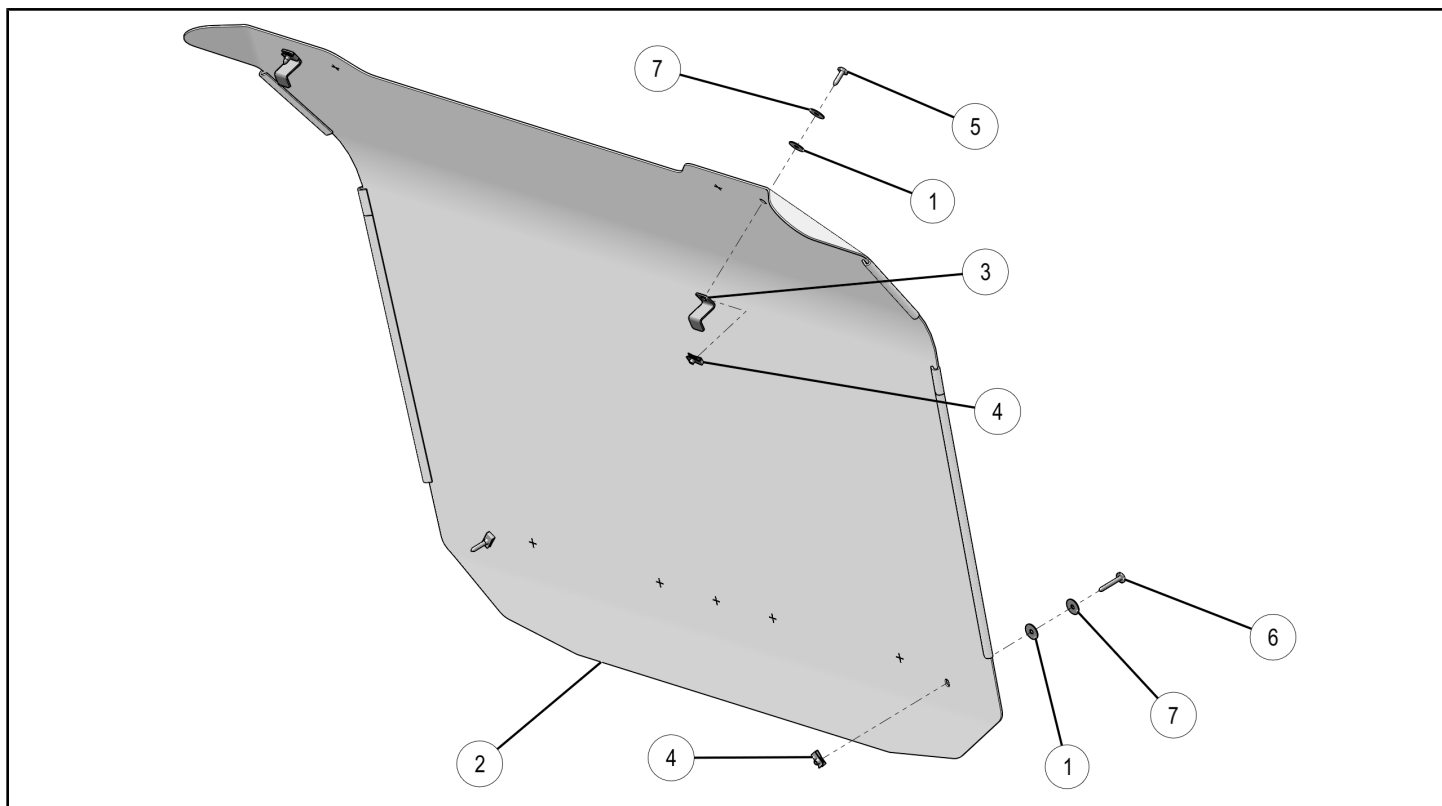
Verify accessory fitment at [Polaris.com](http://Polaris.com).

## BEFORE YOU BEGIN

Read these instructions and check to be sure all parts and tools are accounted for. Please retain these installation instructions for future reference and parts ordering information.

## KIT CONTENTS

This Kit includes:



REF	QTY	PART DESCRIPTION	PART NUMBER
1*	4	Washer, Rubber - 0.281 X 1.00 X 0.051	-
2	1	Panel, Roof	5261035
3	2	Bracket, Roof	5261696
4*	4	Nut Clip	7081305
5*	2	Screw, Torx® - M6 X 1.0 X 25	7519650
6*	2	Screw, Torx® - M6 X 1.0 X 45	7519722
7*	4	Washer, Steel - 0.281 X 1.00 X 0.051	7556329
	1	Instructions	9926158

Items marked (\*) are included in Hardware Kit PN 2205976.

## TOOLS REQUIRED

- Safety Glasses
- Torque Wrench
- Torx® Screwdriver Set
- Torx® Bit Socket Set

## IMPORTANT

Your ALUMINUM ROOF KIT is exclusively designed for your vehicle. Please read the installation instructions thoroughly before beginning. Installation is easier if the vehicle is clean and free of debris. For your safety, and to ensure a satisfactory installation, perform all installation steps correctly in the sequence shown.

## ASSEMBLY TIME

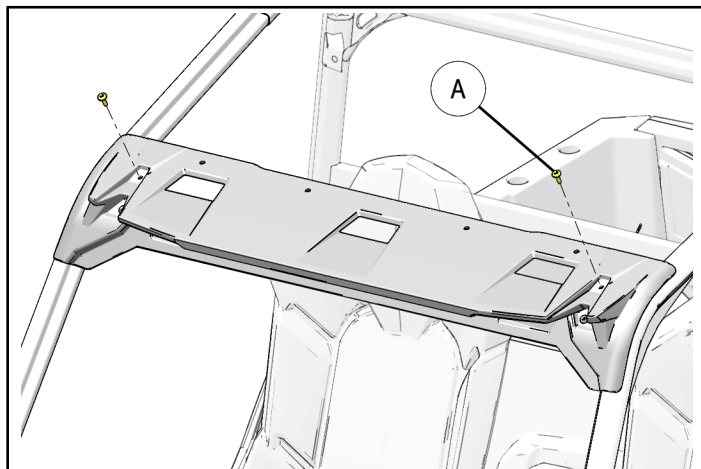
Approximately 10 minutes

## INSTALLATION INSTRUCTIONS

1. Place vehicle in "PARK". Turn key to "OFF" position and remove from vehicle.
2. Remove two rear screws (A) from upper visor panel as shown. Screws will not be reused.

### NOTE

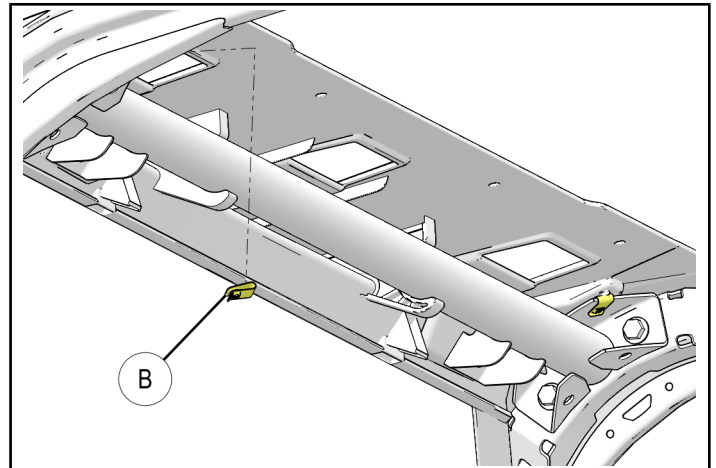
Do not remove forward screws. Roof will be installed on top of visor panel.



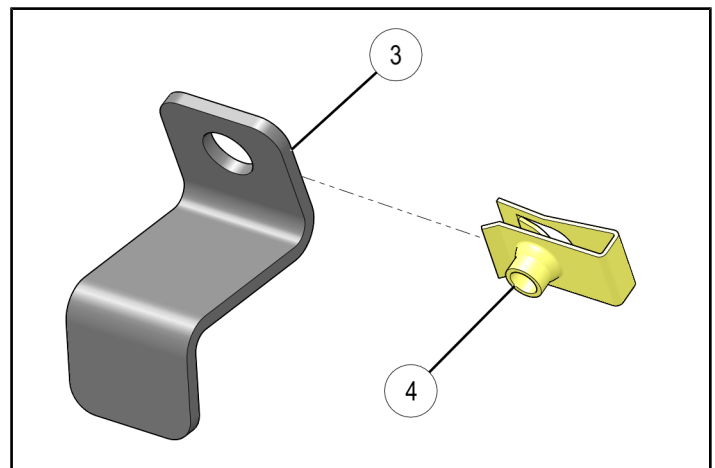
3. Optional: Replace rear nut clips (B) beneath upper visor panel as shown.

### NOTE

Nut clips may be reused if in good condition, or replaced with new nut clips ④.



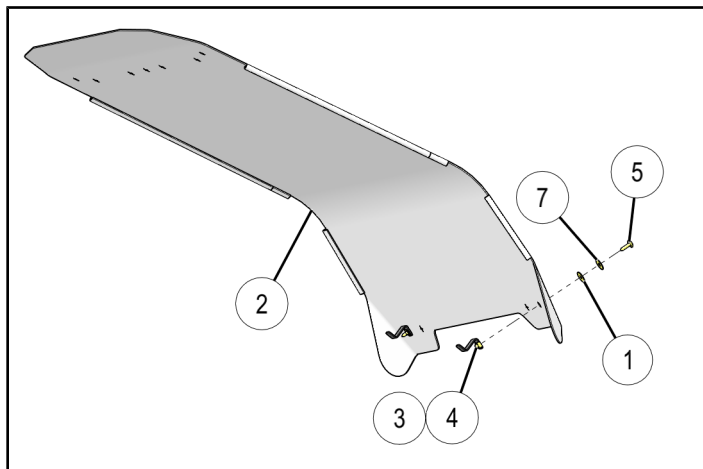
4. Install nut clips ④ to brackets ③ as shown.



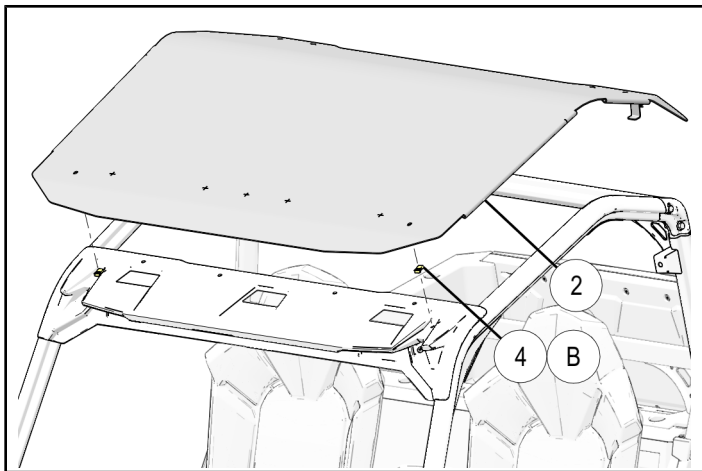
5. Loosely install screw ⑤ through steel washer ⑦, rubber washer ①, and roof ② into nut clip and bracket assembly ③ ④ as shown. Repeat for opposite side.

### IMPORTANT

Ensure steel washer ⑦ is under screw head ⑤, and rubber washer ① is against roof ②.



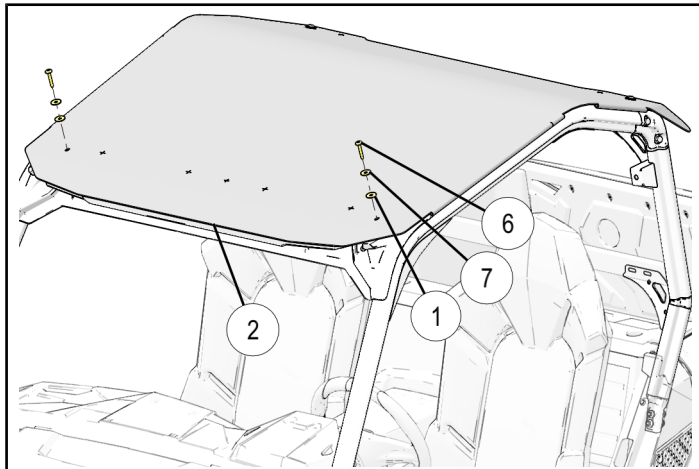
6. Position roof on ROPS, aligning front fastener holes with nut clips (B) or ④.



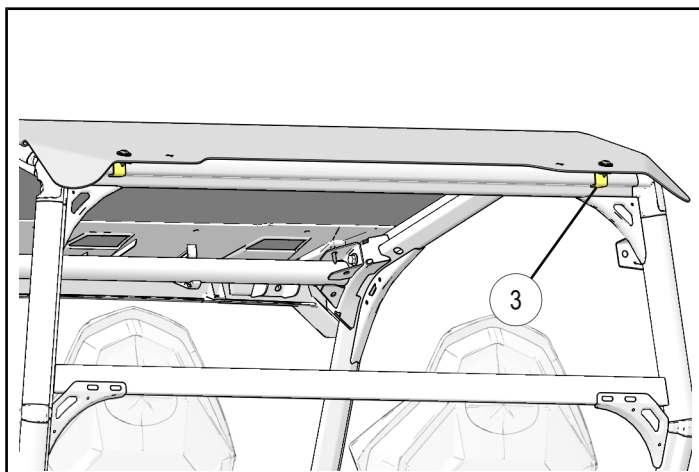
7. Loosely install screw ⑥ through steel washer ⑦, rubber washer ①, roof ②, and visor panel into nut clip (B) or ④ as shown. Repeat for opposite side.

### IMPORTANT

Ensure steel washer ⑦ is under screw head ⑥, and rubber washer ① is against roof ②.



8. Rotate brackets ③ to engage rear ROPS as shown.



9. Torque all screws to specification.

### TORQUE

8 ft. lbs. (11 Nm)