

HIGH MOUNT EXHAUST CONVERSION KIT BY AKRAPOVIC



P/N 2884298

BEFORE YOU BEGIN

Read these instructions and check to be sure all parts and tools are accounted for. Please retain these installation instructions for future reference and parts ordering information.

NOTICE

Factory approved and certified accessories and calibrations are designed for maximum performance, while protecting the engine over a wide range of operating conditions. Use of aftermarket or unapproved accessories or calibrations will cause abnormal sensor or engine operation, error codes and risks damage to the engine. The Indian Motorcycle® Limited Warranty *excludes* damages or failures resulting from use of aftermarket or unapproved components, accessories, and calibrations.

UNITED STATES REGULATORY NOTIFICATION:



This kit meets EPA and CARB emission limits. Tampering with emission related parts can lead to substantial regulatory penalties.

EUROPEAN UNION REGULATORY NOTIFICATION:



EC / ECE approval certification can be found on the product details page of your country's Indian Motorcycle® website.

IMPORTANT

Due to the technical nature of this kit, Indian Motorcycle® insists this installation be performed by a certified Indian Motorcycle® Technician.

APPLICATION

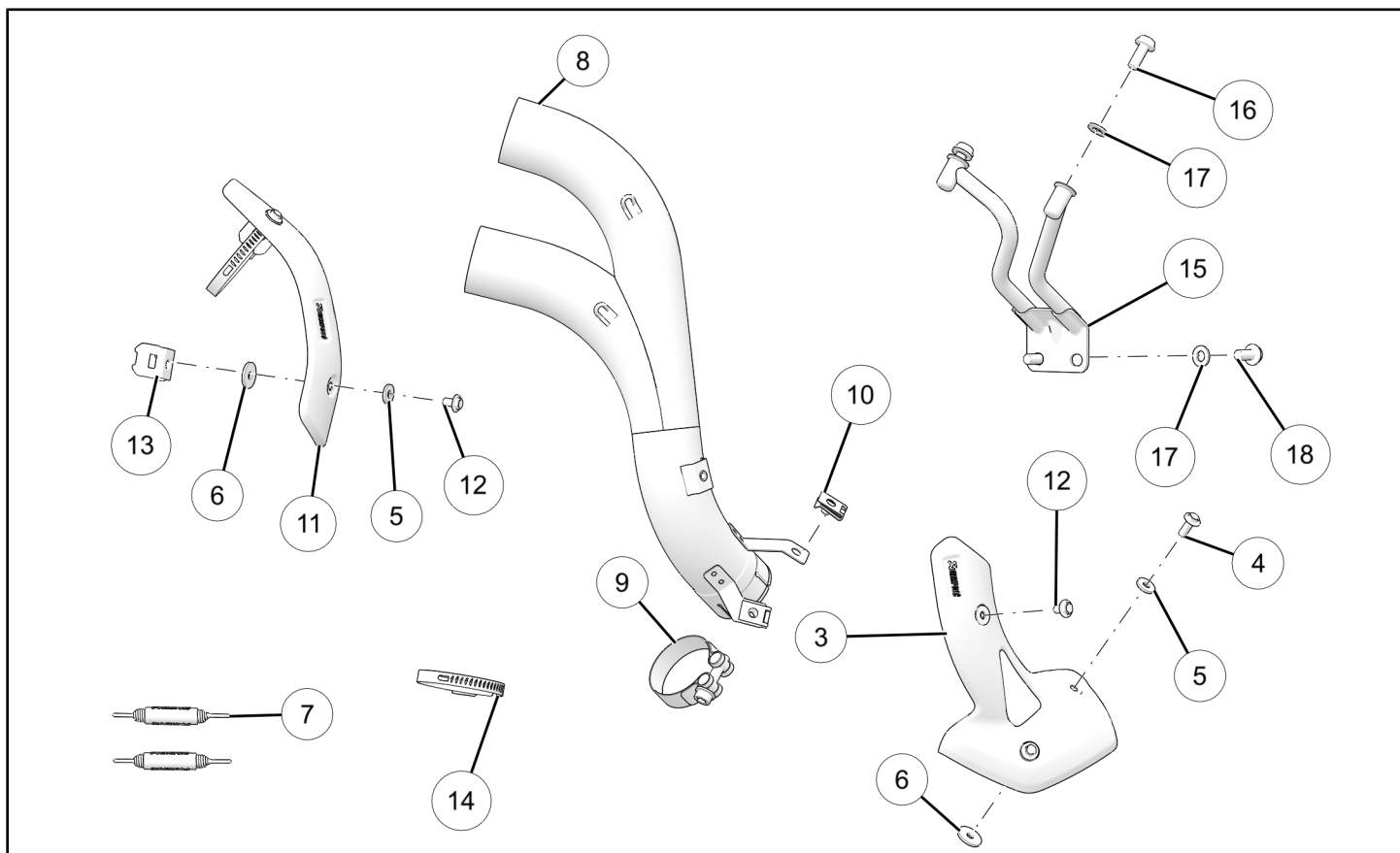
Verify accessory fitment at www.indianmotorcycle.com.

REQUIRED SOLD SEPARATELY

Only parts for installation of the Indian Motorcycle® High Mount Exhaust Conversion Kit By Akrapovic are included. Prior installation of the following additional kits are also required (sold separately):

- *Accessory Mounting Kit*, P/N 2883842
- *Low Mount Slip-On Exhaust Kit by Akrapovič*, P/N 2883520 (standard on some models)
- Required if passenger is riding:
Passenger Peg Mount for High Exhaust Kit, P/N 2884069

KIT CONTENTS



| REF | QTY | PART DESCRIPTION | P/N AVAILABLE SEPARATELY | AVAILABLE SERVICE KIT |
|-----|-----|---|--------------------------|-----------------------|
| 3 | 1 | Heat Shield–Lower, Akrapovič | n/a | 2208035 |
| 4 | 2 | Screw–Button Head, Torx®, M6 x 16 mm | n/a | 2208035 |
| 5 | 5 | Washer, M6 15 x 2 mm | n/a | 2208035 |
| 6 | 5 | Spacer, M6 20 x 2 mm | n/a | 2208035 |
| 7 | 2 | Spring–Fixation, Akrapovič | n/a | 2208037 |
| 8 | 1 | Tube–Exhaust Pipe, High Mount | 1263397 | n/a |
| 9 | 1 | Clamp–Exhaust Pipe | 7082546 | 2208037 |
| 10 | 2 | Nut–Clip, M6 | n/a | 2208035 |
| 11 | 1 | Heat Shield–Upper, Akrapovič | n/a | 2208035 |
| 12 | 3 | Screw–Button Head Flange, Torx®, M6 x 12 mm | n/a | 2208035 |
| 13 | 2 | Gusset–Upper Heat Shield, 1.0 x 25 x 62 mm | n/a | 2208035 |
| 14 | 2 | Clamp–Upper Heat Shield | n/a | 2208035 |
| 15 | 1 | Bracket–High Mount | 5268273 | n/a |
| 16 | 2 | Screw–Button Head, M8 x 20 mm | n/a | 2208037 |
| 17 | 4 | Washer, M8, 16 x 1.6 mm | n/a | 2208037 |
| 18 | 2 | Screw–Button Head, Torx®, M8 x 16 mm | n/a | 2208037 |

TOOLS REQUIRED

- Safety Glasses
- Pliers, Locking
- Screwdriver Set, Torx®
- Socket Set, Metric
- Torque Wrench

IMPORTANT

Your accessory kit is exclusively designed for your vehicle. Please read the installation instructions thoroughly before beginning. Installation is easier if the vehicle is clean and free of debris. For your safety, and to ensure a satisfactory installation, perform all installation steps correctly in the sequence shown.

INSTALLATION INSTRUCTIONS

VEHICLE PREPARATION

GENERAL

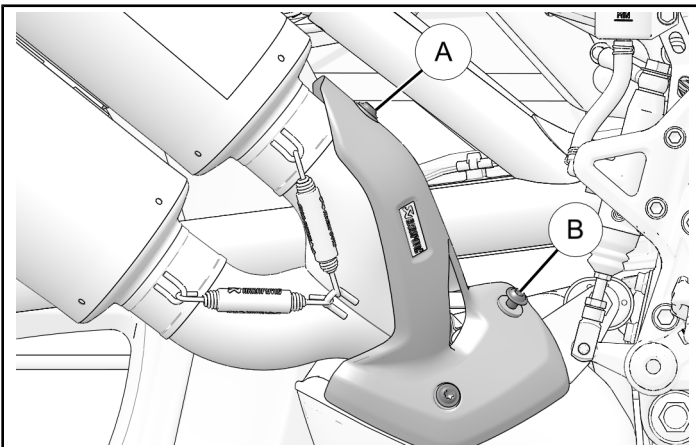
1. Turn key or ignition switch to OFF position and remove key.
2. Ensure motorcycle is parked on a flat surface, kickstand is fully extended, and vehicle is stable prior to installation.
3. Install *Accessory Mounting Kit*, P/N 2883842, as per instructions.

LOW MOUNT SLIP-ON EXHAUST REMOVAL

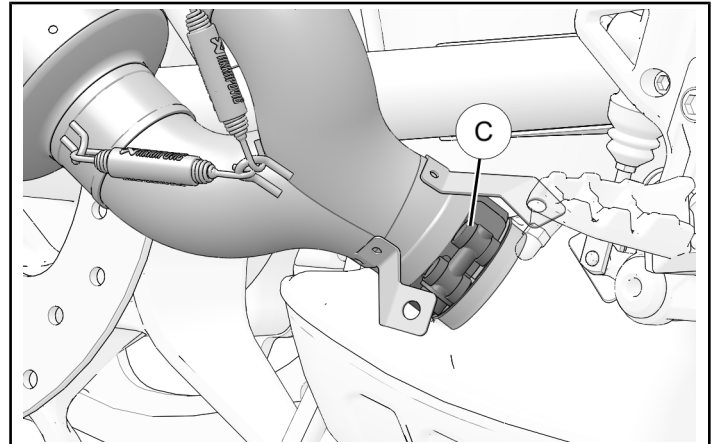
WARNING

Engine and exhaust components get hot and remain hot for a period of time after the engine is stopped. Wear insulated protective clothing or wait for components to cool sufficiently before working on the machine.

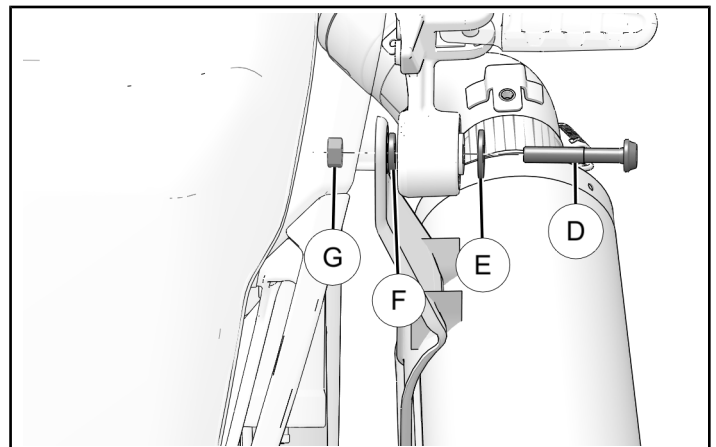
1. Remove and discard one upper heat shield fastener (A) and two lower heat shield fasteners (B).



2. Loosen exhaust clamp (C).

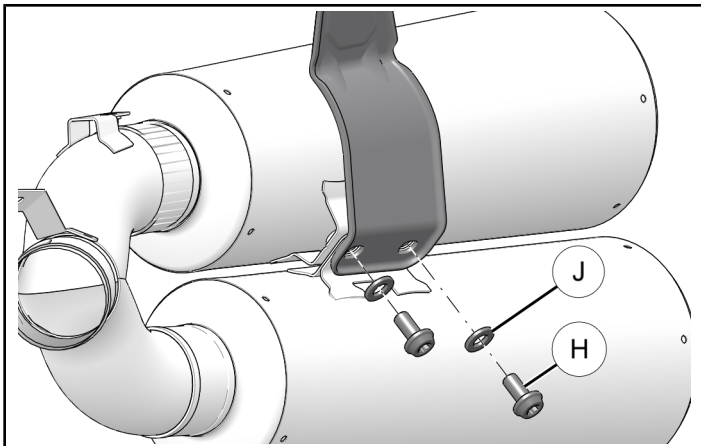


3. Remove and discard muffler isolator fastener (D), washer (E), spacer (F), and nut (G).

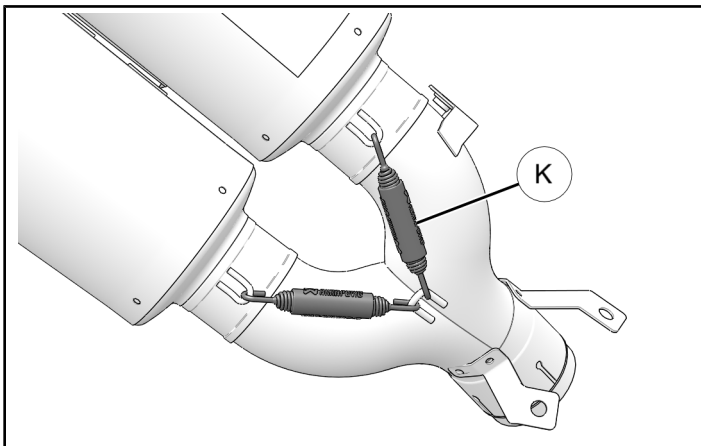


4. Remove exhaust system from resonator and place exhaust system on soft surface before proceeding.

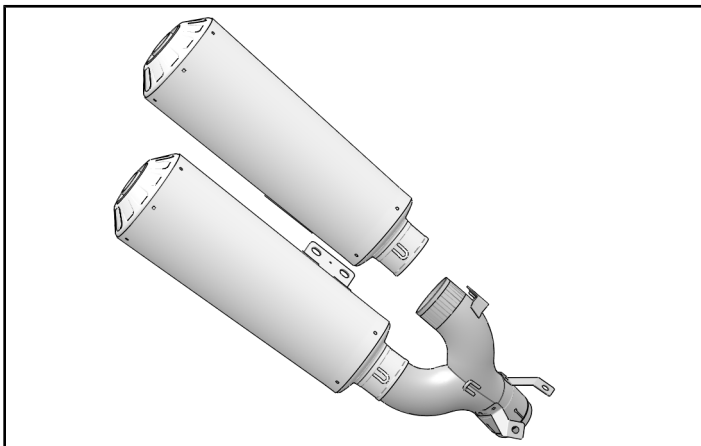
5. Remove two exhaust mount fasteners [Ⓜ] and two washers [Ⓝ] to disconnect mufflers from mounting bracket.



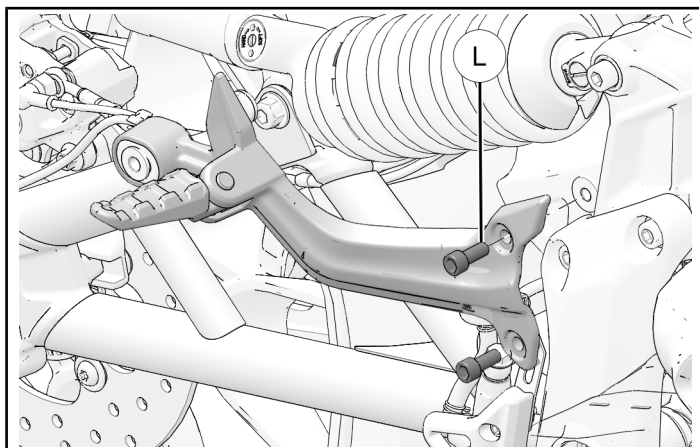
6. Remove and discard two springs [Ⓚ].



7. Slide each muffler off exhaust pipe.



8. Remove and discard two foot peg fasteners [Ⓛ] to remove passenger foot peg.



ACCESSORY INSTALLATION

IMPORTANT

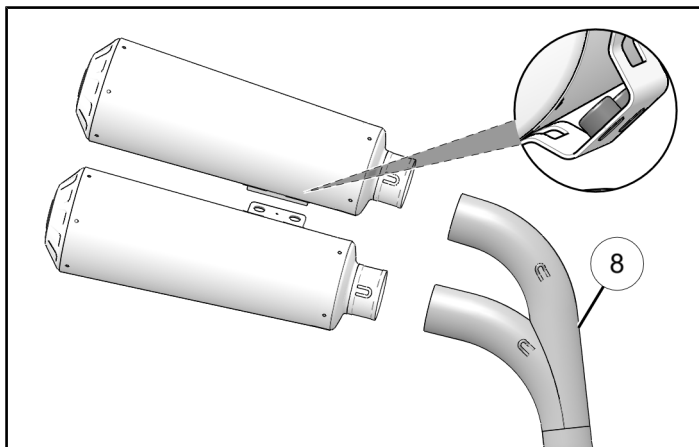
Required if passenger is riding: *Passenger Peg Mount for High Exhaust Kit*, P/N 2884069 must be installed prior to installing conversion kit.

EXHAUST ASSEMBLY

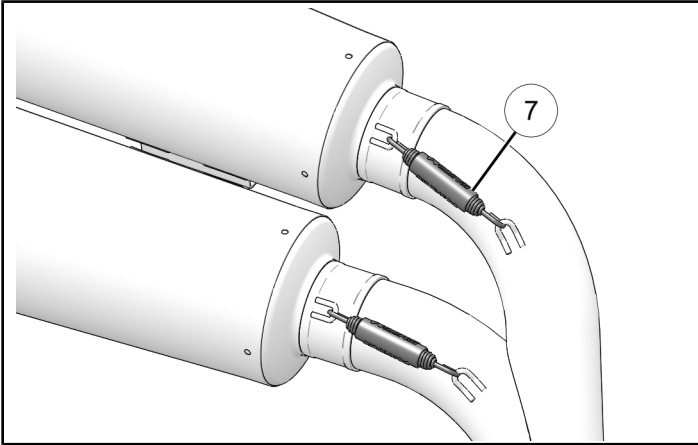
1. Slide retained upper muffler and lower muffler onto exhaust pipe ^⑧.

NOTICE

Upper muffler can be identified by weld nuts on rear-side bracket.

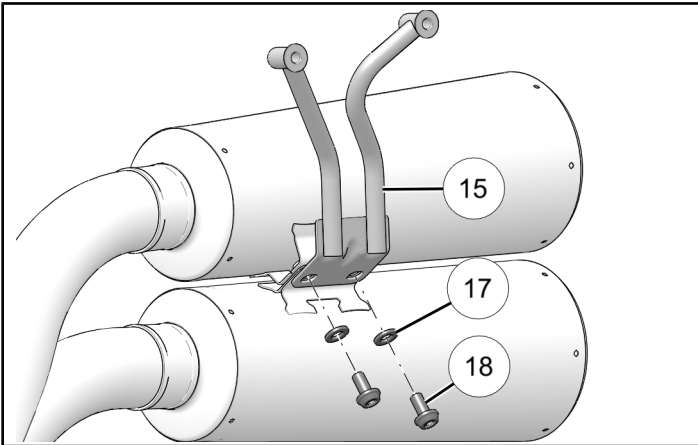


2. Secure mufflers to exhaust pipe with two springs ⑦.



3. Install exhaust mount ⑮ to mufflers with two exhaust mount fasteners ⑱ and two washers ⑰, as shown.

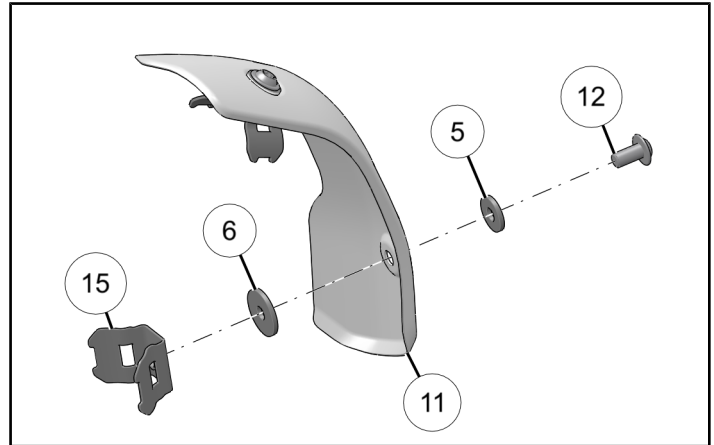
Do not torque exhaust mount fasteners at this time.



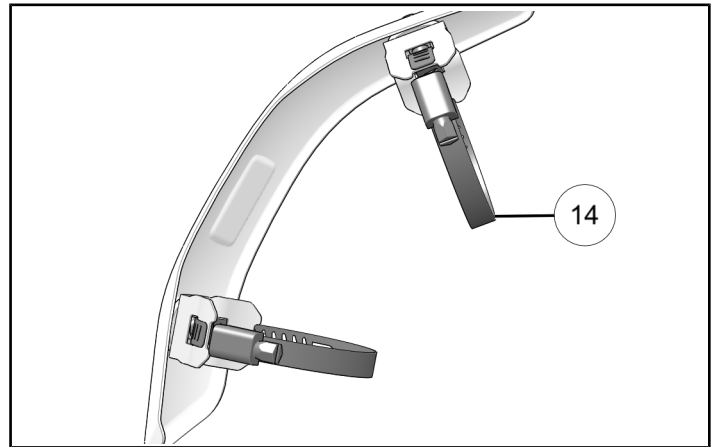
4. Install two gussets ⑮ onto upper heat shield ⑪ with two heat shield fasteners ⑫, two washers ⑤, and two spacers ⑥, as shown. Ensure spacers ⑥ are installed between gusset ⑮ and under-side of heat shield ⑪.

TORQUE

**Upper Heat Shield Fasteners ⑫:
7 ft-lbs (10 N·m)**

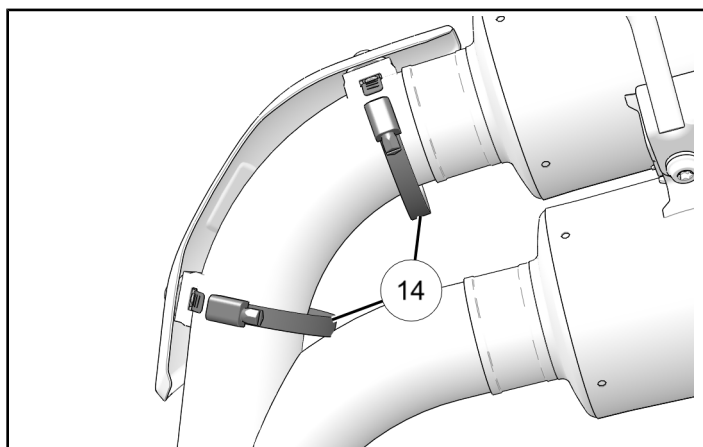


5. Pass two heat shield clamps ⑭ through slots of installed gussets.



6. Place upper heat shield over upper exhaust pipe tube. Ensure heat shield overlaps connection between upper muffler and exhaust pipe. Tighten clamps to secure heat shield.

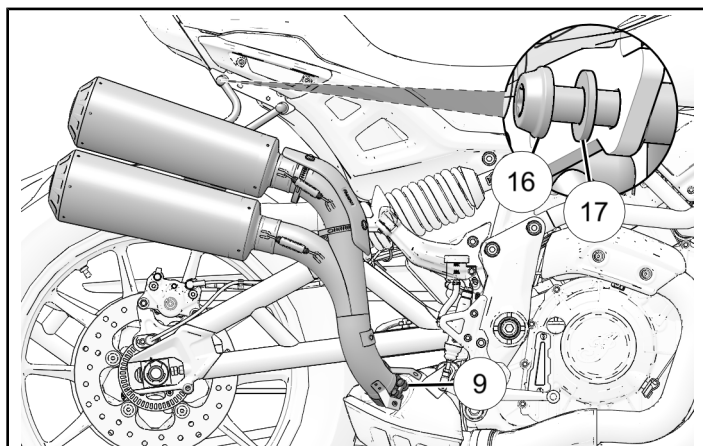
Do not torque heat shield clamps at this time.



EXHAUST INSTALLATION

1. Slide exhaust pipe clamp ⑨ onto base of exhaust pipe and place exhaust pipe onto exhaust resonator. Align exhaust mount with accessory mounts and install with two mounting fasteners ⑯ and two washers ⑰.

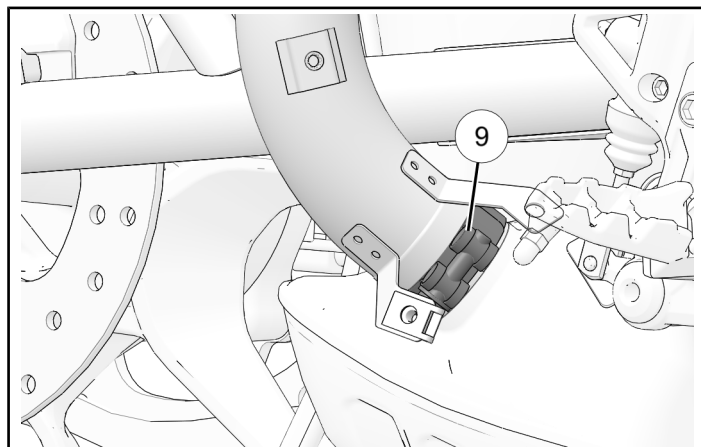
Do not torque two mounting fasteners ⑯ at this time.



2. Tighten clamp ⑨ around base of exhaust pipe.

TORQUE

Exhaust Clamp ⑨ (Muffler to Resonator):
10 ft-lbs (14 N·m)



3. Torque mounting fasteners ⑯, installed in step 1 of this section.

TORQUE

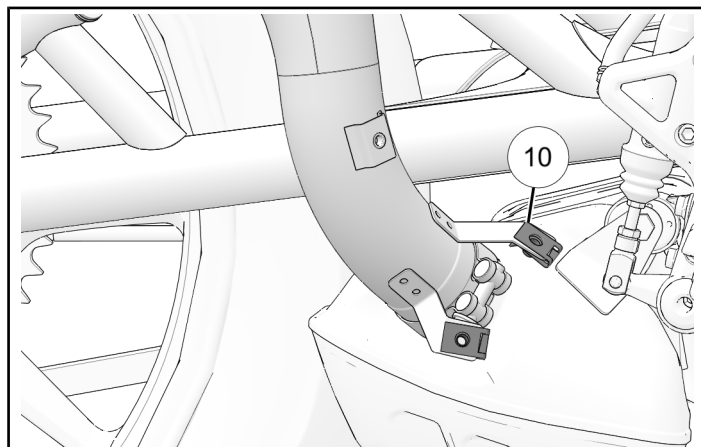
Mounting Fasteners ⑯:
19 ft-lbs (26 N·m)

4. Torque exhaust mount fasteners ⑱, installed in step 3 of *Exhaust Assembly* section.

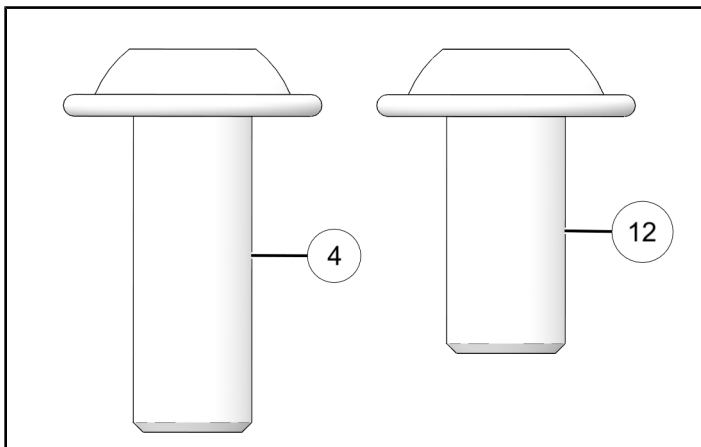
TORQUE

Exhaust Mount Fasteners ⑱:
19 ft-lbs (26 N·m)

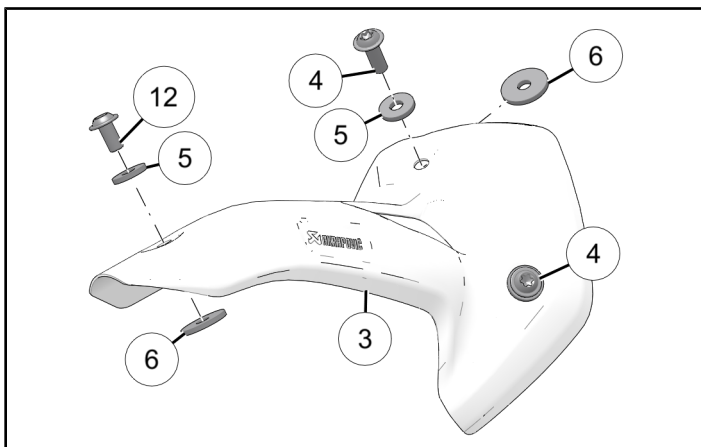
5. Slide two clip-nuts ⑩ onto lower heat shield mounts.



6. Ensure two heat shield fasteners ④ (long) are used at lower mounting locations. Using fasteners ④ (long) instead of fastener ⑫ (short) at upper mounting location may result in fastener being installed into exhaust pipe and causing damage.



7. Pass heat shield fasteners ④ and ⑫ through three washers ⑤, heat shield ③, and three spacers ⑥.



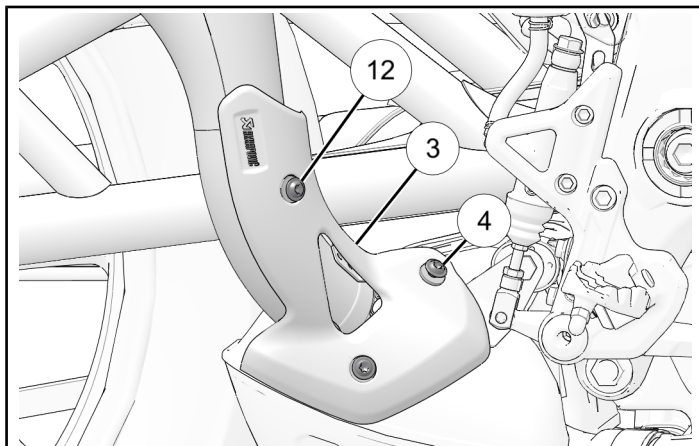
8. Install lower heat shield ③ onto exhaust pipe mounts. Ensure spacers are aligned with clip-nuts underneath heat shield.

TORQUE

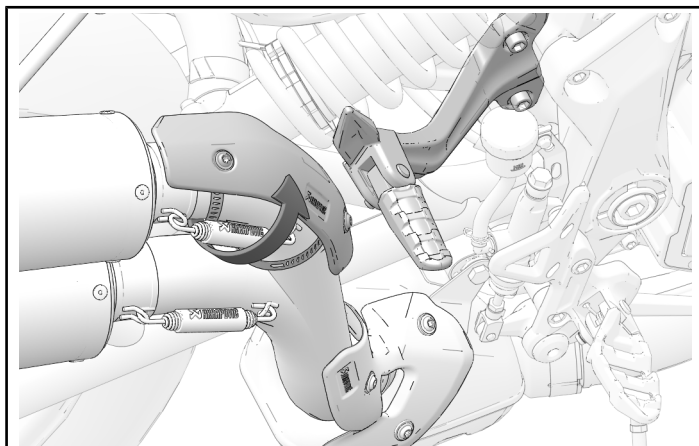
Upper Heat Shield Fastener ⑫:
84 in-lbs (10 N·m)

TORQUE

Lower Heat Shield Fasteners ④:
84 in-lbs (10 N·m)



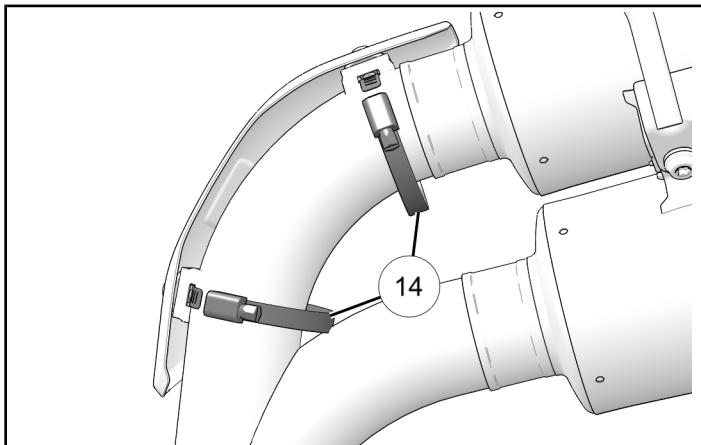
9. Adjust heat shield so that it does not contact passenger foot peg when opened or closed.



10. Tighten heat shield clamps ⑭ to specification.

TORQUE

Upper Heat Shield Clamps ⑭:
1 in-lbs (2 N·m)



FEEDBACK FORM

A feedback form has been created for the installer to provide any comments, questions or concerns about the installation instructions. The form is viewable on mobile devices by scanning the QR code or by clicking [HERE](#) if viewing on a PC.

