

# PASSENGER FLOORBOARD KIT



P/N 2880104-XXX, 2880293, 2882866-XXX

## APPLICATION

Verify accessory fitment at [www.indianmotorcycle.com](http://www.indianmotorcycle.com).

## BEFORE YOU BEGIN

Read these instructions and check to be sure all parts and tools are accounted for. Please retain these installation instructions for future reference and parts ordering information.

## REQUIRED SOLD SEPARATELY

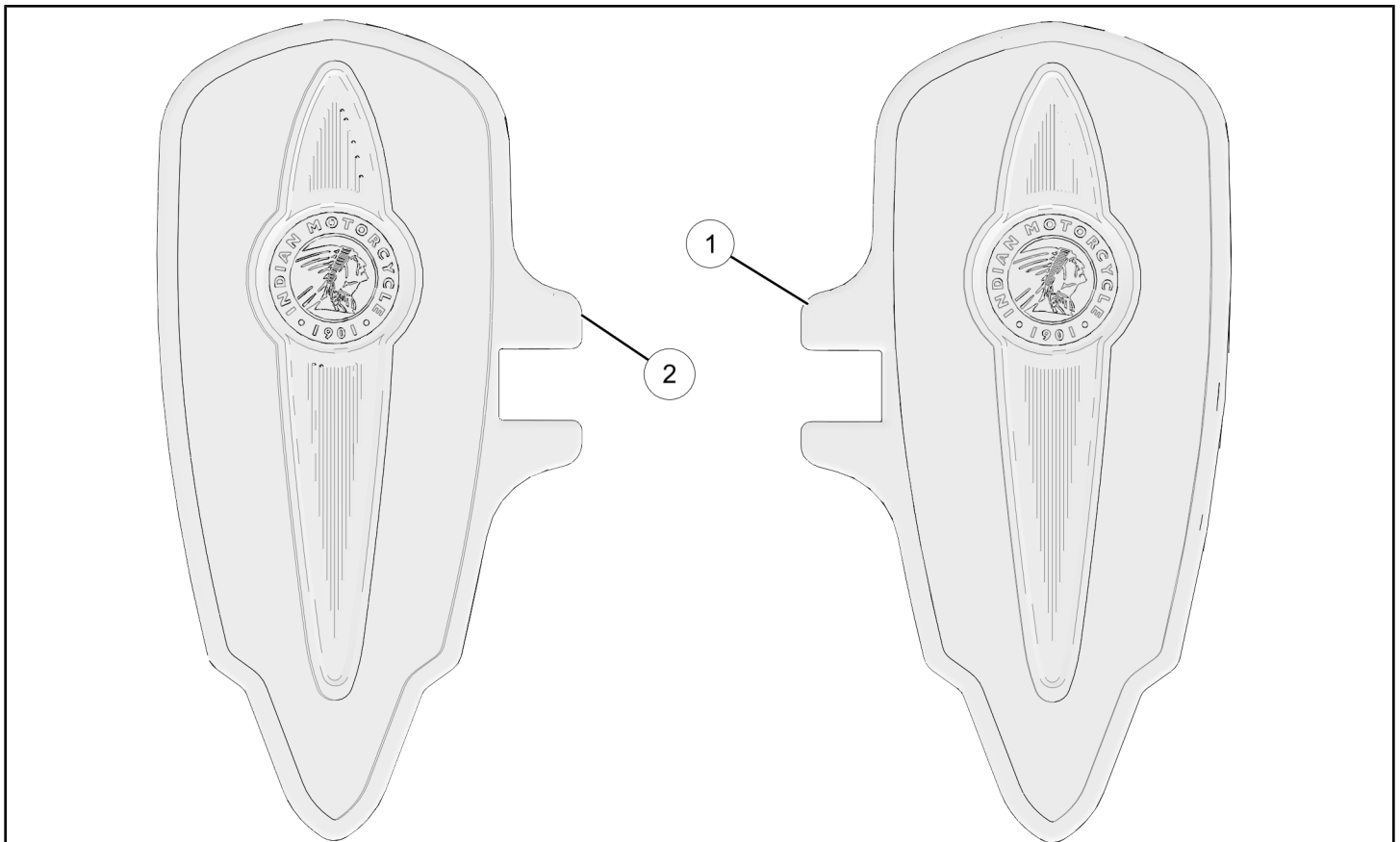
Only parts for installation of the Indian Motorcycle® Passenger Floorboard Kit are included. For complete installation, the following additional kit is required (sold separately):

- *Passenger Floorboard Mounting Kit*, P/N 2880288

## KIT CONTENTS

### NOTICE

Passenger Floorboard Kit, P/N 2882866-XXX shown; others similar.



### NOTICE

XXX = Indian Motorcycle® color code (For example: 266 = Black)

## PASSENGER FLOORBOARD KIT, P/N 2880104-XXX

REF	QTY	PART DESCRIPTION	P/N AVAILABLE SEPARATELY
1	1	Floorboard, Passenger, Right-Hand	1020658-XXX
2	1	Floorboard, Passenger, Left-Hand	1020659-XXX
3	1	Ring-Retaining (not shown)	7710644

## PASSENGER FLOORBOARD KIT, P/N 2880293

REF	QTY	PART DESCRIPTION	P/N AVAILABLE SEPARATELY
1	1	Floorboard, Passenger, Right-Hand	5139675-XXX
2	1	Floorboard, Passenger, Left-Hand	5139676-XXX
3	1	Ring-Retaining (not shown)	7710644
4	2	Pad-Floorboard, Passenger (not shown)	5415214

## PASSENGER FLOORBOARD KIT, P/N 2882866-XXX

REF	QTY	PART DESCRIPTION	P/N AVAILABLE SEPARATELY
1	1	Floorboard, Passenger, Right-Hand	5141384-XXX
2	1	Floorboard, Passenger, Left-Hand	5141385-XXX

## TOOLS REQUIRED

- Safety Glasses
- Pliers, Retaining Ring
- Pliers, Needle Nose
- Pick and Hook Set

## CONSUMABLES REQUIRED

- Gloves, Chemical Resistant
- Grease, Polaris® All Season (or equivalent)

## IMPORTANT

Your Indian Motorcycle® Passenger Floorboard Kit is exclusively designed for your vehicle. Please read the installation instructions thoroughly before beginning. Installation is easier if the vehicle is clean and free of debris. For your safety, and to ensure a satisfactory installation, perform all installation steps correctly in the sequence shown.

## INSTALLATION INSTRUCTIONS

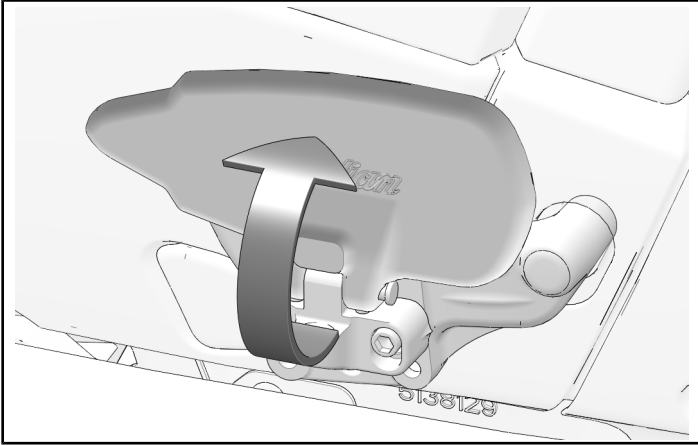
### VEHICLE PREPARATION

#### GENERAL

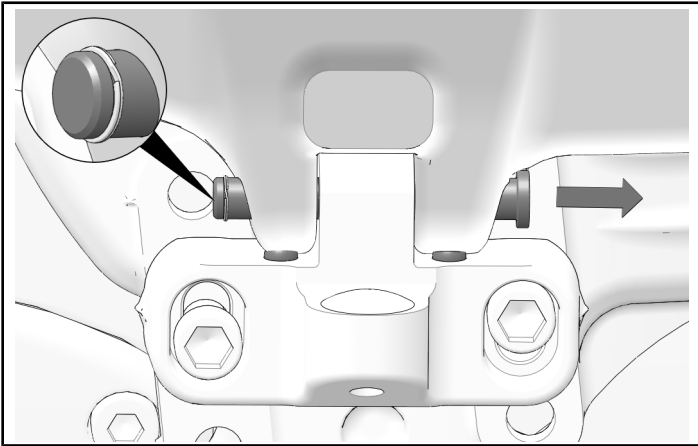
1. Turn key or ignition switch to OFF position and remove key. If equipped with keyless fob, remove fob from proximity of vehicle.
2. Ensure motorcycle is parked on a flat surface, kickstand is fully extended, and vehicle is stable prior to installation.

## PASSENGER FLOORBOARD REMOVAL

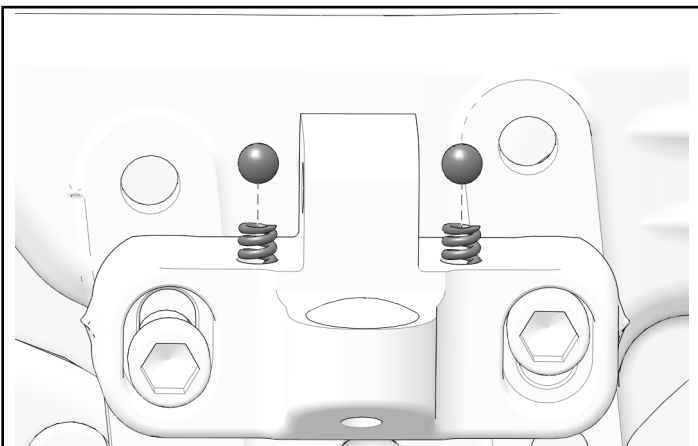
1. Flip passenger floorboard to upright position.



2. Remove retaining ring and slide pivot pin out to remove floorboard from mount.

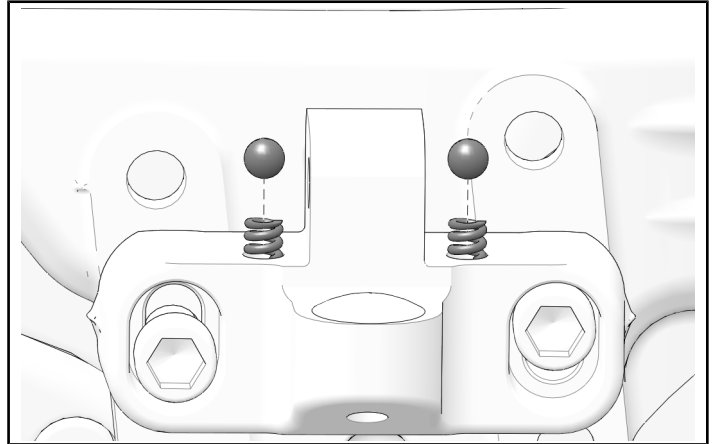


3. Make note of detent balls and compression springs.

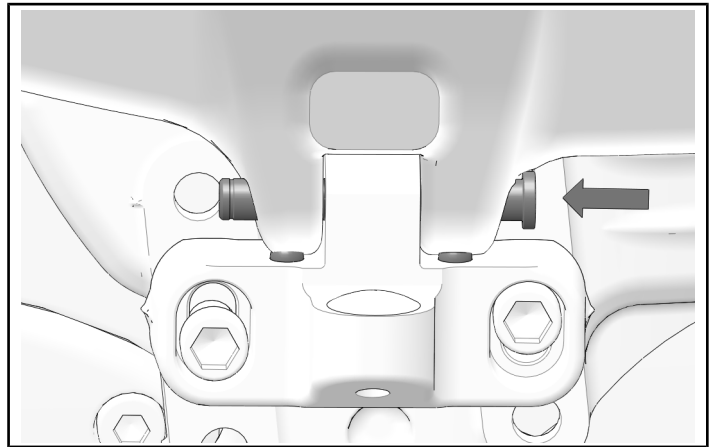


## ACCESSORY INSTALLATION

1. Lightly coat each compression spring with grease and insert spring into pivot mount. Place one ball on top each spring.



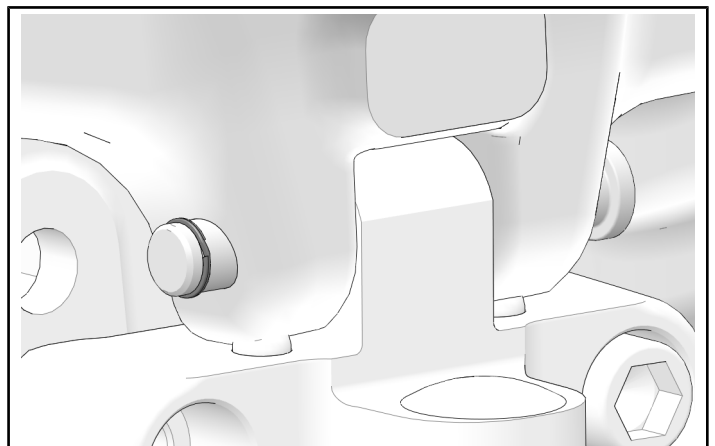
2. Align accessory floorboard with pivot mount and pass pin through floorboard and mount.



3. Secure pin with retaining ring.

### TIP

Use retaining ring included in accessory kit, if available.



## FEEDBACK FORM

A feedback form has been created for the installer to provide any comments, questions or concerns about the installation instructions. The form is viewable on mobile devices by scanning the QR code or by clicking [HERE](#) if viewing on a PC.

