

RADIAL MIRROR KIT BY RIZOMA



P/N 2883771

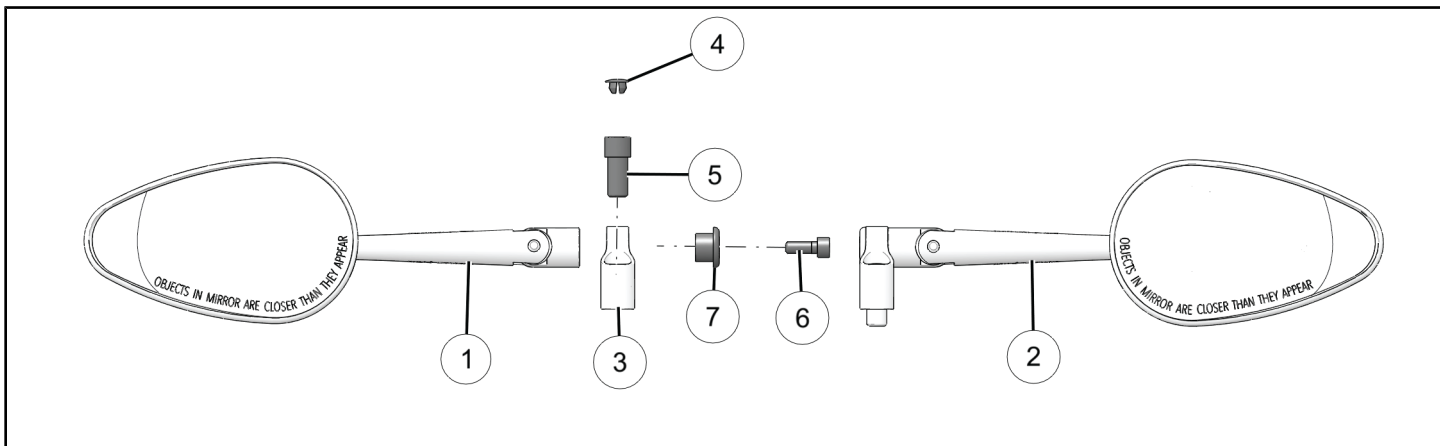
BEFORE YOU BEGIN

Read these instructions and check to be sure all parts and tools are accounted for. Please retain these installation instructions for future reference and parts ordering information.

APPLICATION

Verify accessory fitment at www.indianmotorcycle.com.

KIT CONTENTS



REF	QTY	PART DESCRIPTION	P/N AVAILABLE SEPARATELY
1	1	Mirror-Assembly, Left-Hand	2637235
2	1	Mirror-Assembly, Right-Hand	2637236
3	2	Mirror-Mount	n/a
4	2	Cap-Screw	n/a
5	2	Screw-Socket Head Hex, M10 x 1.25 mm x 20 mm	n/a
6	2	Screw-Socket Head Hex, M6 x 16mm	n/a
7	2	Bushing-Mirror	n/a
	1	Instructions	9929613

TOOLS REQUIRED

- Safety Glasses
- Hex Key Set, Metric
- Screwdriver Set, Torx®
- Socket Set, Hex Bit, Metric
- Socket Set, Metric
- Socket Set, Torx® Bit
- Torque Wrench
- Wrench Set, Metric

IMPORTANT

Your accessory kit is exclusively designed for your vehicle. Please read the installation instructions thoroughly before beginning. Installation is easier if the vehicle is clean and free of debris. For your safety, and to ensure a satisfactory installation, perform all installation steps correctly in the sequence shown.

INSTALLATION INSTRUCTIONS

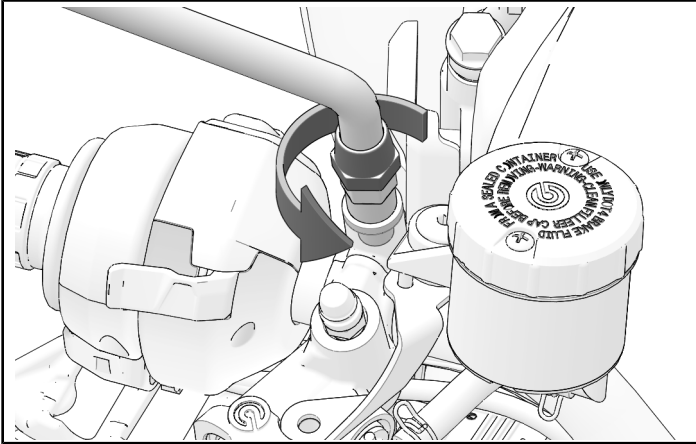
VEHICLE PREPARATION

GENERAL

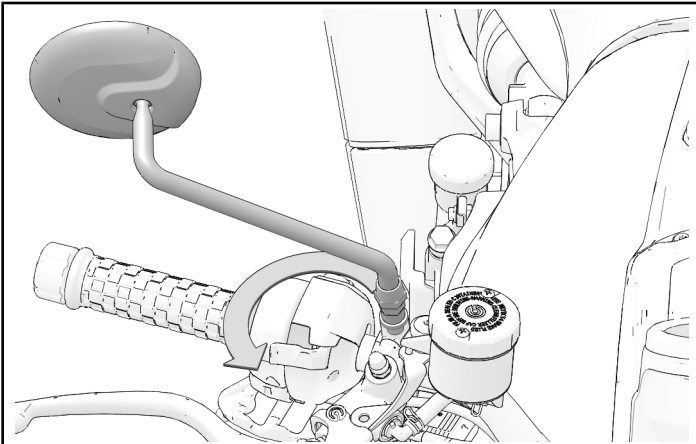
1. Turn key or ignition switch to OFF position and remove key.
2. Ensure motorcycle is parked on a flat surface, kickstand is fully extended, and vehicle is stable prior to installation.

MIRROR REMOVAL

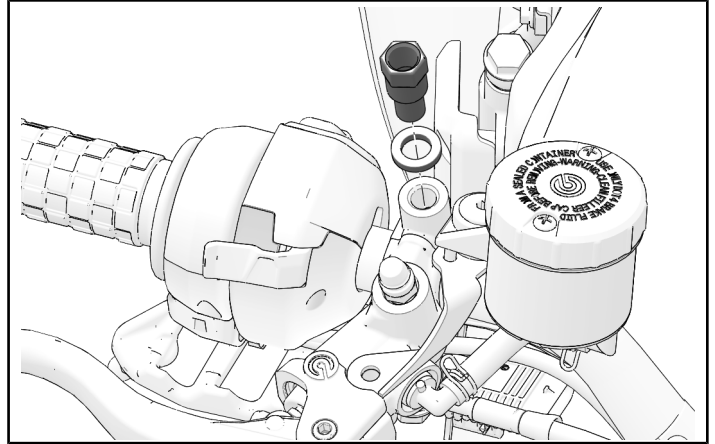
1. Loosen jam nut on mirror stalk.



2. Rotate mirror assembly to screw out of threaded post nut. Carefully set mirror aside where it will not be damaged.



3. Remove post nut and washer from handlebar perch.



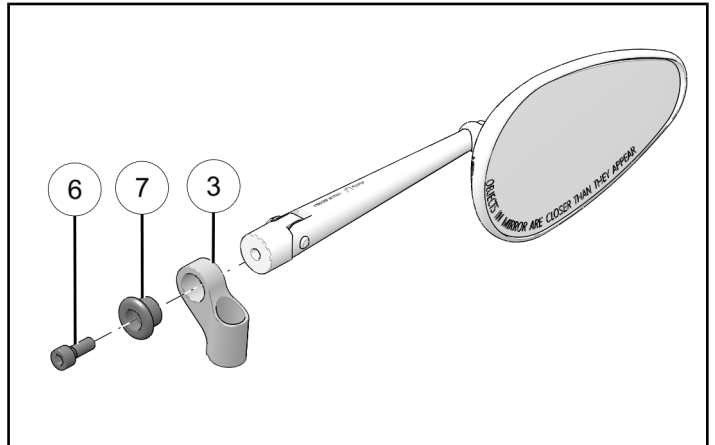
4. Repeat this section for opposite side.

ACCESSORY INSTALLATION

1. Assemble mirror mount (3) to mirror assembly with one fastener (6) and one bushing (7).

TORQUE

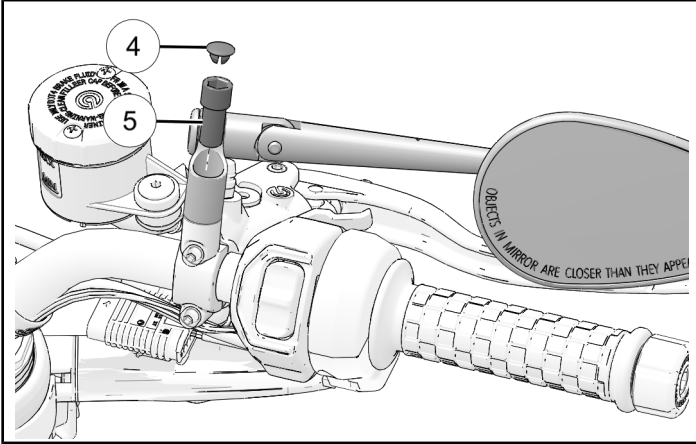
Mirror Mount Fastener (6) (Mount to Mirror):
108 in-lbs (12 N·m)



2. Install mirror to mirror perch with one fastener ⑤. After torquing fastener to specification, firmly push fastener cap ④ onto fastener.

TORQUE

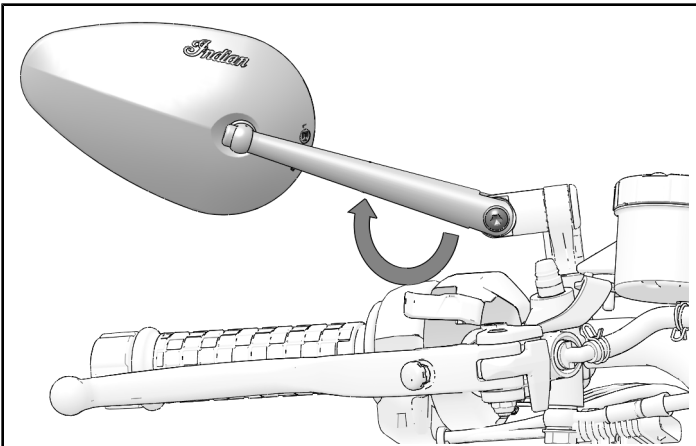
Mirror Mount Fastener ⑤ (Mount to Perch):
18 ft-lbs (24 N·m)



3. Loosen mirror adjustment fastener to adjust mirror height. Torque to specification after desired position is reached.

TORQUE

Mirror Adjustment Fastener (Arm to Mount):
96 in-lbs (11 N·m)



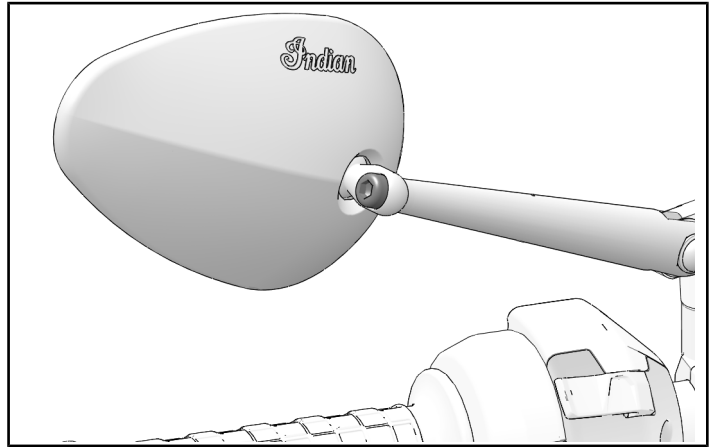
FEEDBACK FORM

A feedback form has been created for the installer to provide any comments, questions or concerns about the installation instructions. The form is viewable on mobile devices by scanning the QR code or by clicking [HERE](#) if viewing on a PC.

4. Adjust mirror position and torque to specification after desired position is reached.

TORQUE

Mirror Adjustment Fastener (Mirror to Arm):
108 in-lbs (12 N·m)



5. Repeat this section for opposite side.

