

# FRONT WHEEL DISC LOCK KIT



P/N 2883508

## INTERNATIONAL INSTRUCTIONS

### DEUTSCH

Laden Sie die neuesten PDF-Anweisungen von [www.indianmotorcycle.de](http://www.indianmotorcycle.de) herunter.

### ENGLISH

Download the latest PDF instructions from [www.indianmotorcycle.com](http://www.indianmotorcycle.com)

### ESPAÑOL

Descargue las instrucciones más recientes en formato PDF de [www.indianmotorcycle.mx](http://www.indianmotorcycle.mx) / [www.indianmotorcycle.es](http://www.indianmotorcycle.es).

### FRANÇAIS

Télécharger les dernières instructions en format PDF sur [www.indianmotorcycle.fr](http://www.indianmotorcycle.fr)

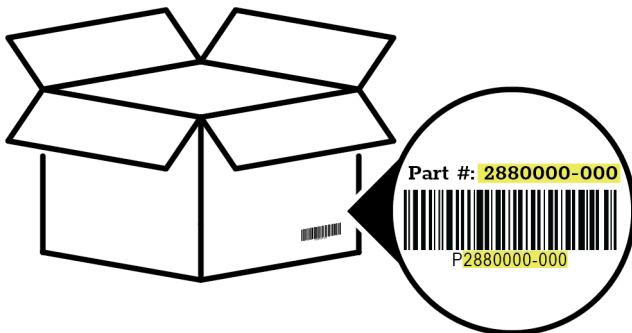
### ITALIANO

Scarica l'ultima versione delle istruzioni in formato PDF da [www.indianmoto.it](http://www.indianmoto.it).

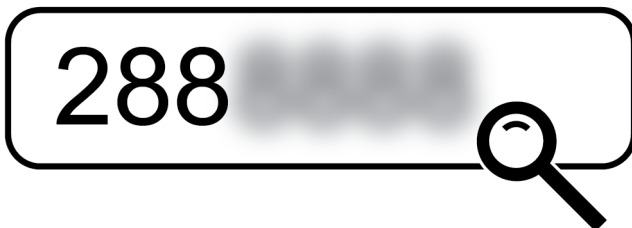
### 中文

从[www.indianmotorcycle.cn](http://www.indianmotorcycle.cn) 下载最新的PDF说明。

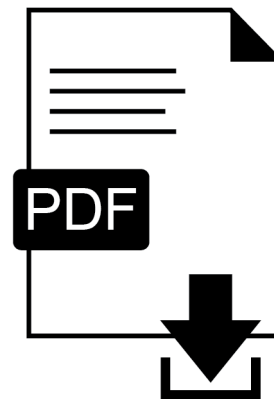
1.



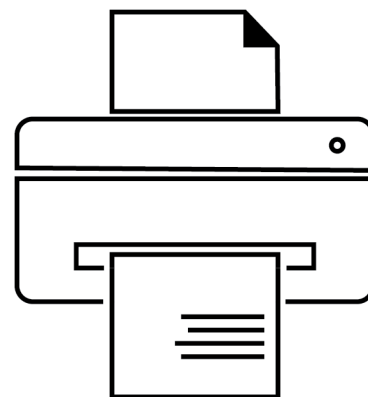
2.



3.



4.



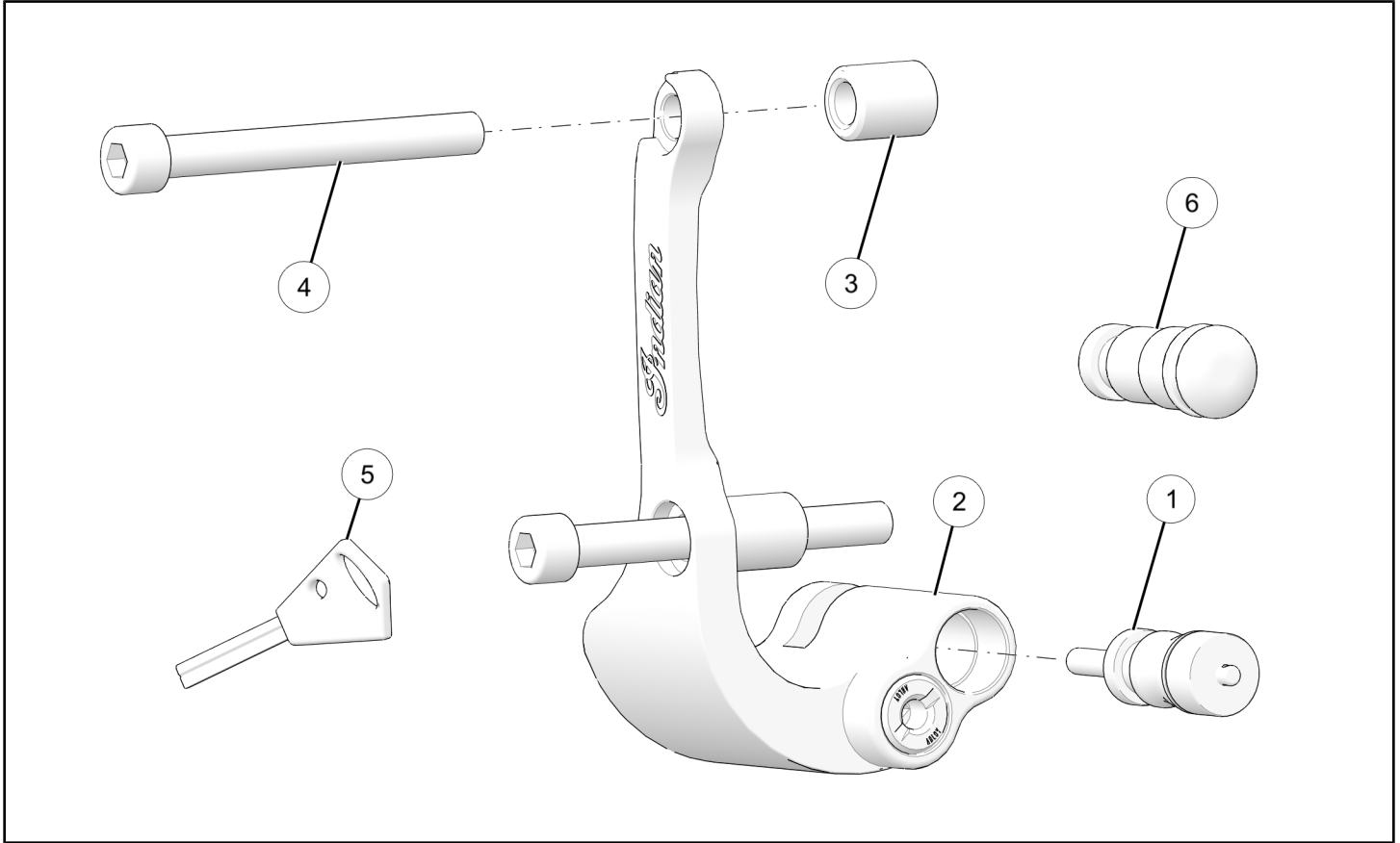
## APPLICATION

Verify accessory fitment at [www.indianmotorcycle.com](http://www.indianmotorcycle.com).

## BEFORE YOU BEGIN

Read these instructions and check to be sure all parts and tools are accounted for. Please retain these installation instructions for future reference and parts ordering information.

## KIT CONTENTS



REF	QTY	PART DESCRIPTION	P/N AVAILABLE SEPARATELY
1	1	Pin, Security System	1024999
2	1	Brake Disc Lock	1025000
3	2	Spacer, Security System	5142898
4	2	Screw–Socket Head, M10 x 1.25 x 90	7521125
5	1	Key, Security System	See Key Registration section.
6	6	Plug–Pin, Security System	1024999
	1	Instructions	9929640

## TOOLS REQUIRED

- Safety Glasses
- Hex Key Set, Metric
- Socket Set, Hex Bit, Metric
- Torque Wrench

## IMPORTANT

Your accessory kit is exclusively designed for your vehicle. Please read the installation instructions thoroughly before beginning. Installation is easier if the vehicle is clean and free of debris. For your safety, and to ensure a satisfactory installation, perform all installation steps correctly in the sequence shown.

## INSTALLATION INSTRUCTIONS

### IMPORTANT

Always install pin plug ⑥ when riding to prevent debris from entering locking pin hole.

## VEHICLE PREPARATION

### GENERAL

1. Turn key or ignition switch to OFF position and remove key.
2. Ensure motorcycle is parked on a flat surface, kickstand is fully extended, and vehicle is stable prior to installation.
3. Register key at [www.Roadlok.com](http://www.Roadlok.com).

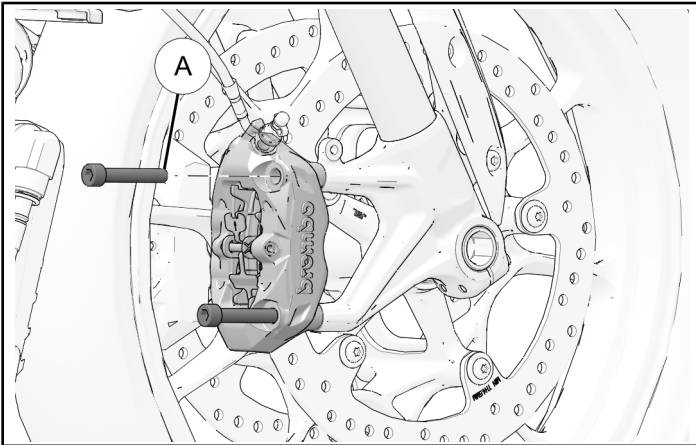
### IMPORTANT

Keys are unique to each security system and cannot be replaced if key is not registered.

## ACCESSORY INSTALLATION

### DISC LOCK INSTALLATION

1. Remove and discard two brake caliper fasteners ①.



2. Align brake disc lock ② and two spacers ③ with brake caliper. Pass two disc lock fasteners ④ through disc lock and spacers.

- FTR™ 1200 models

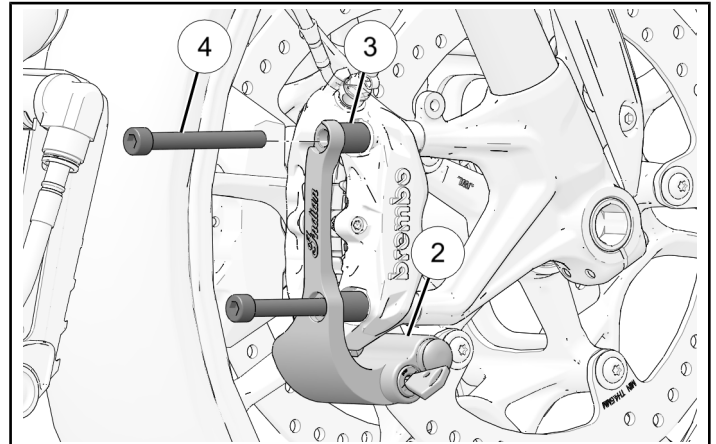
### TORQUE

Disc lock fasteners ④:  
**32 ft-lbs (43 N·m)**

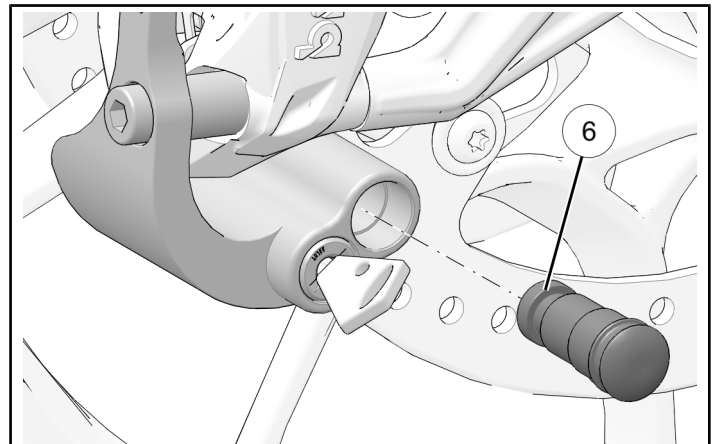
- Challenger Models

### TORQUE

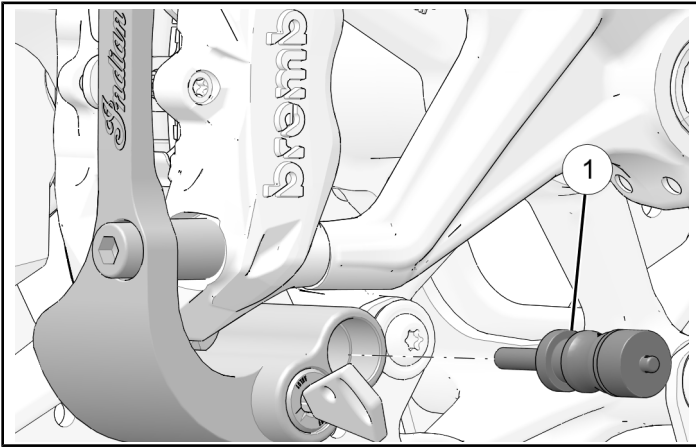
Disc lock fasteners ④:  
**35 ft-lbs (47 N·m)**



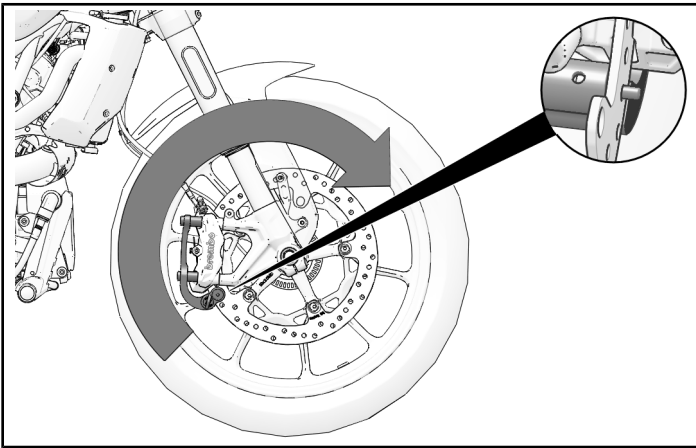
3. Turn key clockwise to UNLOCK position and remove pin plug ⑥.



4. Install spring-loaded locking pin ① and turn key to LOCK position.



5. Roll motorcycle forward or backward until pin locks engages with rotor.



## FEEDBACK FORM

A feedback form has been created for the installer to provide any comments, questions or concerns about the installation instructions. The form is viewable on mobile devices by scanning the QR code or by clicking [HERE](#) if viewing on a PC.

## TROUBLESHOOTING

### DIFFICULTY REMOVING LOCKING PIN

If there is pressure on the pin, it may not pop out with key turned fully. To remove pin, keep key turned fully clockwise and take pressure off pin by either pushing or pulling lightly on fork leg.

#### NOTICE

Main body of pin will pop out of hole approximately 1/4 in (6 mm) when in unlocked position, regardless of pressure being applied to pin by rotor.

### LOST LOCKING PIN

The locking pin is universal throughout each lock system. One pin fits every *Front Wheel Disc Lock Kit*.

### CLEANING KEY CYLINDER

The key cylinder is designed to withstand typical environment conditions. To maintain smooth operation, rinse key cylinder with water and dry with a quick blast of air every 2-3 months.

#### IMPORTANT

**DO NOT** use spray lubricants such as WD-40. Spray lubricants will hold dirt and debris, creating friction and increased wear.

