

LUGGAGE RACK KIT



P/N 2883511

INTERNATIONAL INSTRUCTIONS

DE DEUTSCH

Laden Sie die neuesten PDF-Anweisungen von www.indianmotorcycle.de herunter.

FR FRANÇAIS

Télécharger les dernières instructions en format PDF sur www.indianmotorcycle.fr.

IT ITALIANO

Scarica l'ultima versione delle istruzioni in formato PDF da www.indianmoto.it.

EN ENGLISH

Download the latest PDF instructions from www.indianmotorcycle.com.

ES ESPAÑOL

Descargue las instrucciones más recientes en formato PDF de www.indianmotorcycle.mx / www.indianmotorcycle.es.

ZH 中文

从www.indianmotorcycle.cn 下载最新的PDF说明。

1



2



3



4



APPLICATION

Verify accessory fitment at www.indianmotorcycle.com.

IMPORTANT

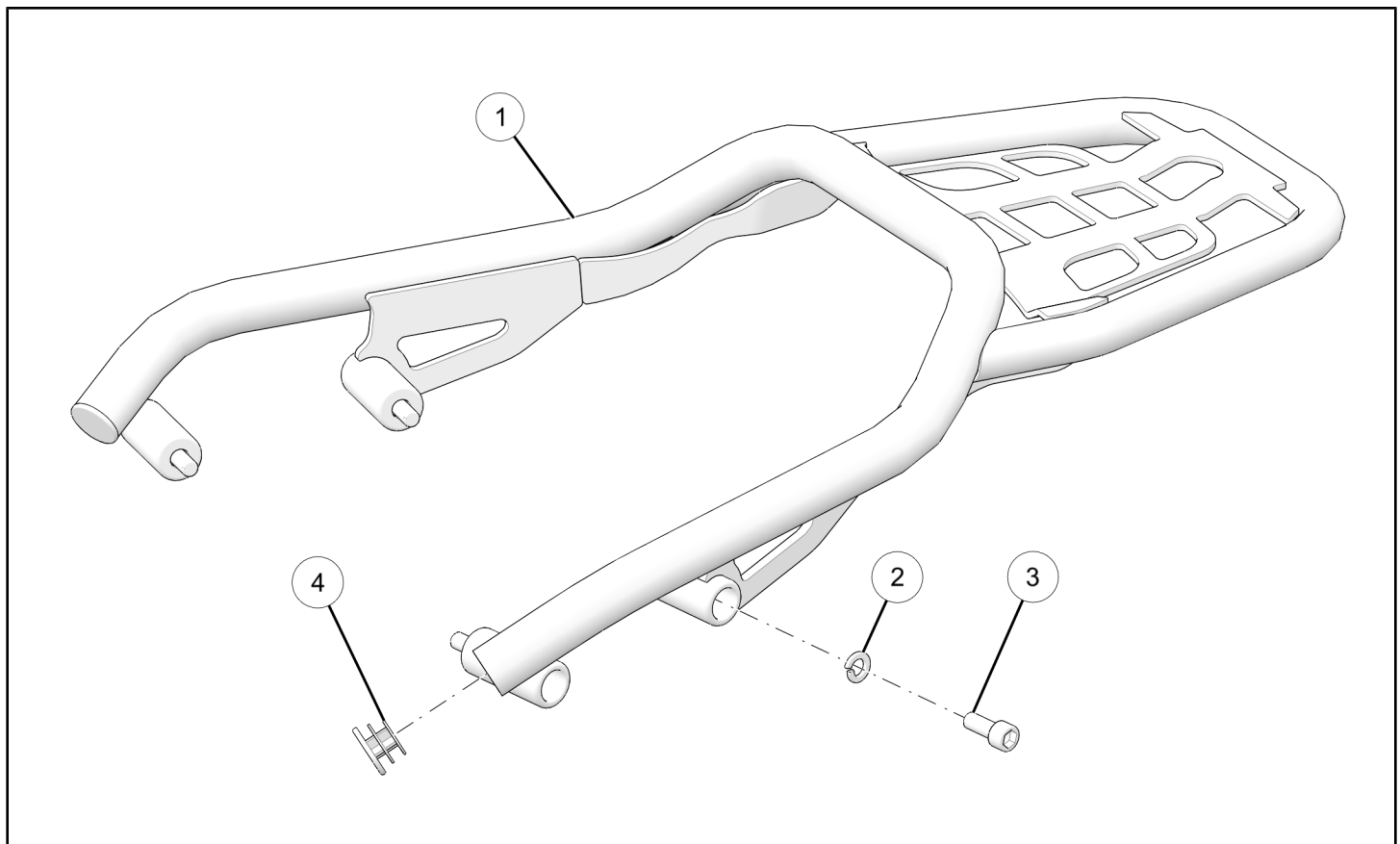
The Indian Motorcycle® *Luggage Rack Kit* is not compatible with the following accessories:

- *Grab Handle Kit*, P/N 2883512
- *Seat Cowl Kit*, P/N 2883504
- *Carbon Fiber Seat Cowl Kit*, P/N 2883900
- *High License Plate Mount Kit*, P/N 2884060

BEFORE YOU BEGIN

Read these instructions and check to be sure all parts and tools are accounted for. Please retain these installation instructions for future reference and parts ordering information.

KIT CONTENTS



REF	QTY	PART DESCRIPTION	P/N AVAILABLE SEPARATELY
1	1	Weld-Luggage Rack	N/A
2	4	Screw-Socket Head, M8 x 1.25 x 20	7520320
3	4	Washer-8.5 x 14.8 x 1.9	7556528
4	2	Snap-In, Round Plug	5455998
	1	Instructions	9929469

TOOLS REQUIRED

- Safety Glasses
- Hex Key Set, Metric
- Screwdriver Set, Torx®
- Socket Set, Hex Bit, Metric
- Socket Set, Torx® Bit
- Torque Wrench

IMPORTANT

Your accessory kit is exclusively designed for your vehicle. Please read the installation instructions thoroughly before beginning. Installation is easier if the vehicle is clean and free of debris. For your safety, and to ensure a satisfactory installation, perform all installation steps correctly in the sequence shown.

INSTALLATION INSTRUCTIONS

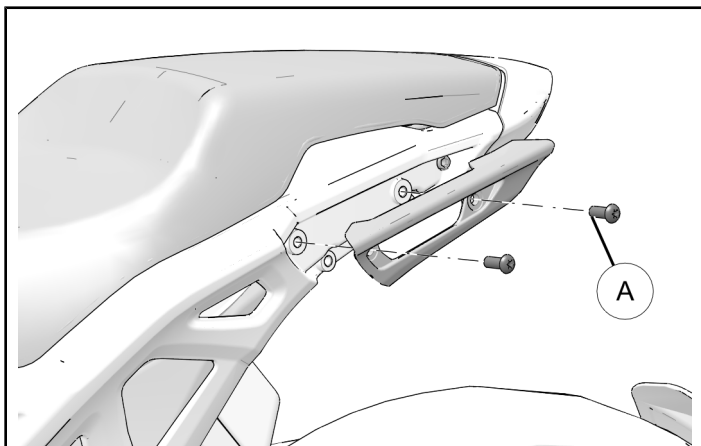
VEHICLE PREPARATION

GENERAL

1. Turn key or ignition switch to OFF position and remove key.
2. Ensure motorcycle is parked on a flat surface, kickstand is fully extended, and vehicle is stable prior to installation.

PASSENGER HANDLE REMOVAL

1. Remove two screws (A) to remove passenger handle from motorcycle frame.



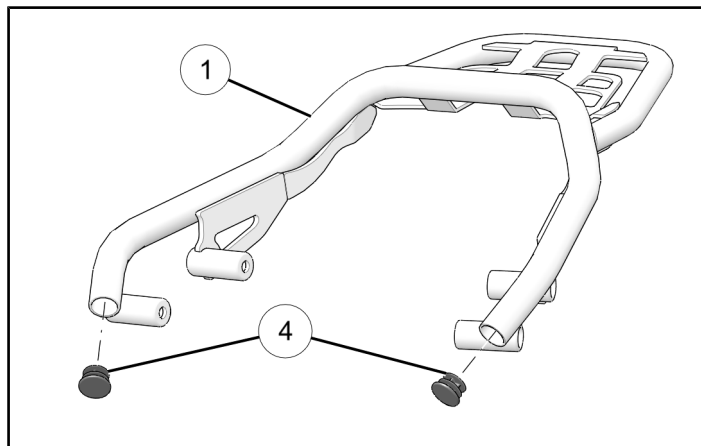
2. Repeat this section for opposite side.

ACCESSORY INSTALLATION

⚠ WARNING

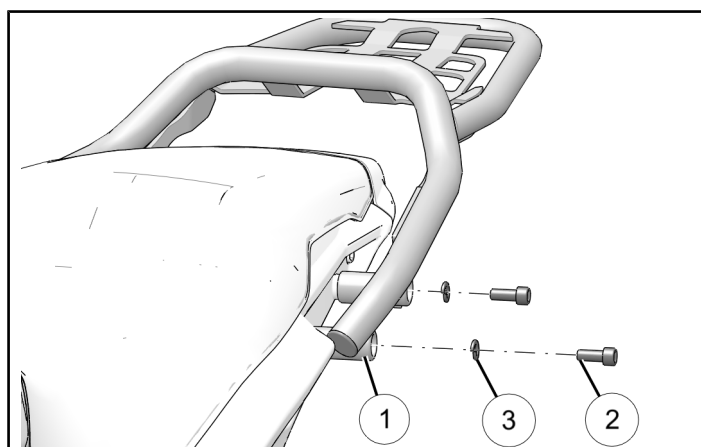
Maximum load weight = **9 lbs. (4 kg)**
Do not exceed recommended weight capacity.
Uneven load distribution can cause loss of control
resulting in serious injury or death.

1. Firmly push two plugs (4) into tube ends of luggage rack (1).



2. Align four luggage rack mounts (1) with rear frame and install LH side with two screws (2) and two washers (3).

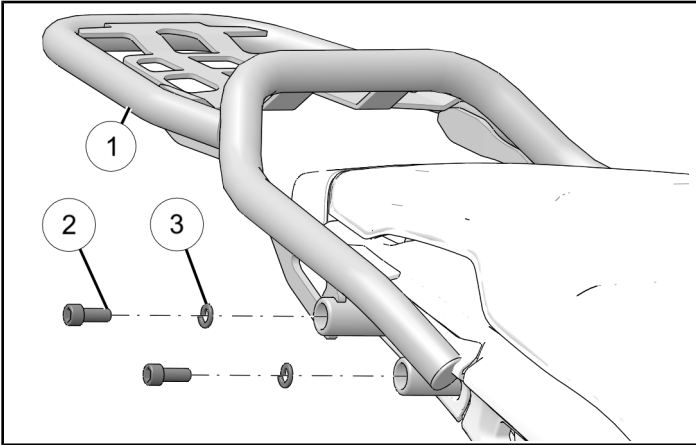
Do not torque screws at this time.



3. Install RH side of luggage rack with two fasteners ② and two washers ③.

TORQUE

Luggage Rack Fasteners ②:
18 ft-lbs (24 N·m)



FEEDBACK FORM

A feedback form has been created for the installer to provide any comments, questions or concerns about the installation instructions. The form is viewable on mobile devices by scanning the QR code or by clicking [HERE](#) if viewing on a PC.

