

# PASSENGER PEG KIT



P/N 2882295

## BEFORE YOU BEGIN

Read these instructions and check to be sure all parts and tools are accounted for. Please retain these installation instructions for future reference and parts ordering information.

## APPLICATION

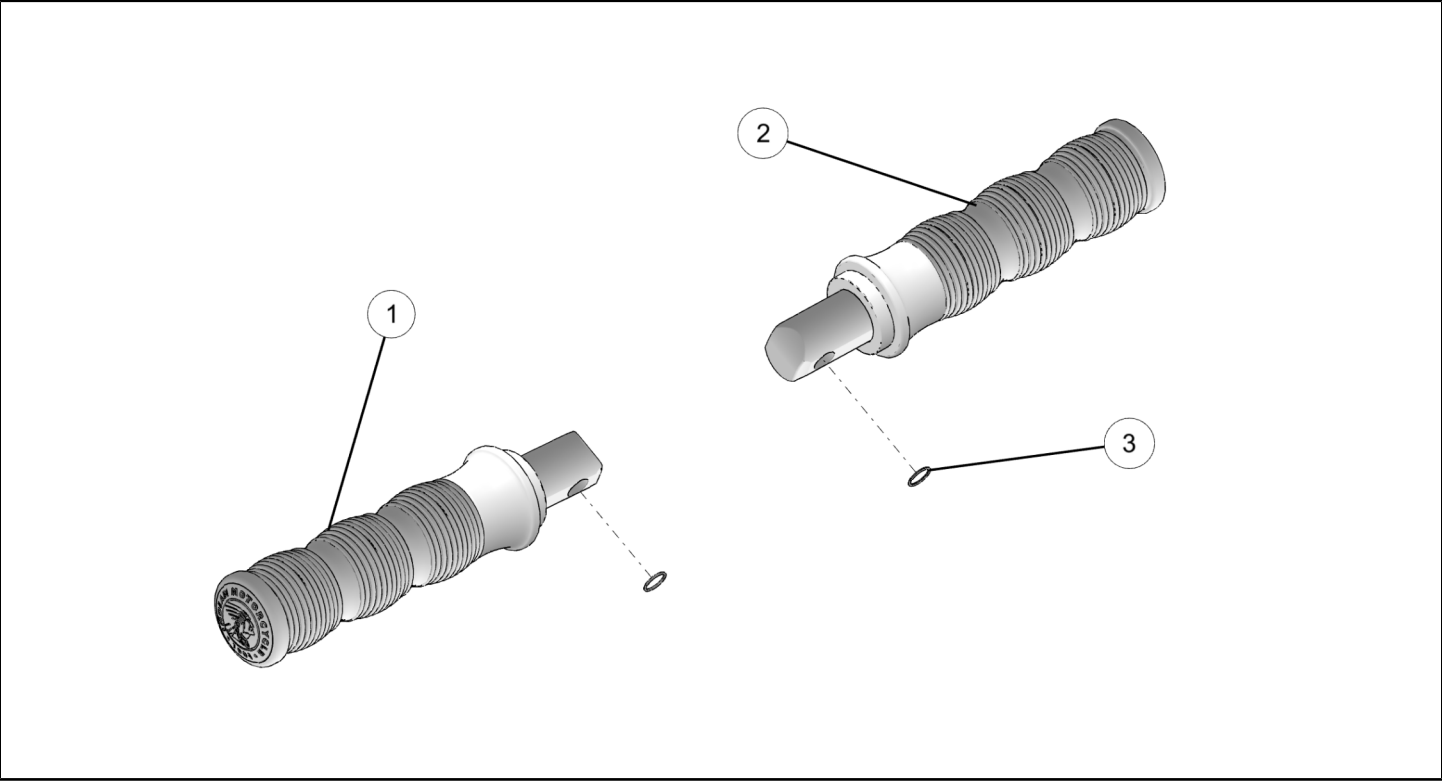
Verify accessory fitment at [www.indianmotorcycle.com](http://www.indianmotorcycle.com).

## REQUIRED SOLD SEPARATELY

Only parts for installation of the Indian Motorcycle® Passenger Peg Kit are included. Models without factory-installed passenger foot pegs require installation of the following kits (sold separately):

- 2022 to current Chief models *Passenger Foot Peg Kit*, P/N 2889213-XXX
- 2015 to current Scout models *Passenger Peg Kit*, P/N 2882251-XXX

## KIT CONTENTS



NOTICE	
XXX = Indian Motorcycle® color code (For example: 266 = Black)	

REF	QTY	PART DESCRIPTION	P/N AVAILABLE SEPARATELY
1	1	Passenger Peg, Left-Hand	N/A
2	1	Passenger Peg, Right-Hand	N/A
3	2	Retaining Ring	7710644

## TOOLS REQUIRED

- Safety Glasses
- Screwdriver, Slotted

## IMPORTANT

Your Indian Motorcycle® Passenger Peg Kit is exclusively designed for your vehicle. Please read the installation instructions thoroughly before beginning. Installation is easier if the vehicle is clean and free of debris. For your safety, and to ensure a satisfactory installation, perform all installation steps correctly in the sequence shown.

## INSTALLATION INSTRUCTIONS

### VEHICLE PREPARATION

#### GENERAL

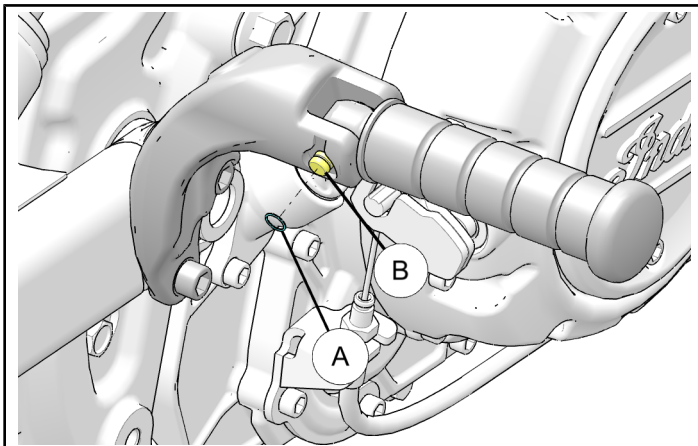
1. Park motorcycle on a flat surface, fully extend kickstand, and make sure vehicle is stable.
2. Turn key or ignition switch to OFF position and remove key. If equipped with keyless fob, remove fob from proximity of vehicle.

### ACCESSORY INSTALLATION

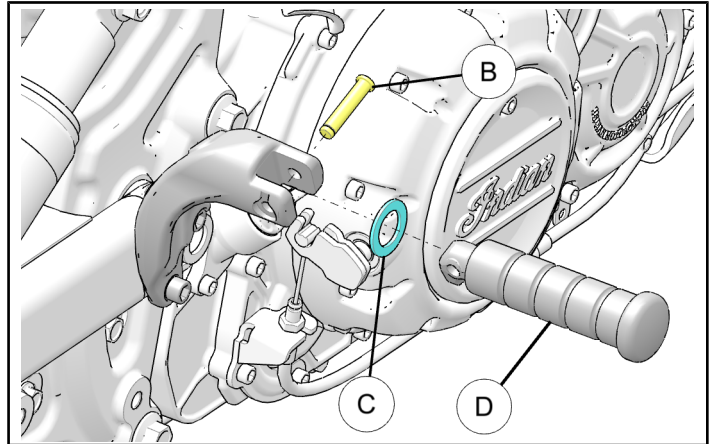
#### NOTICE

Right-hand passenger peg shown; left-hand side is similar.

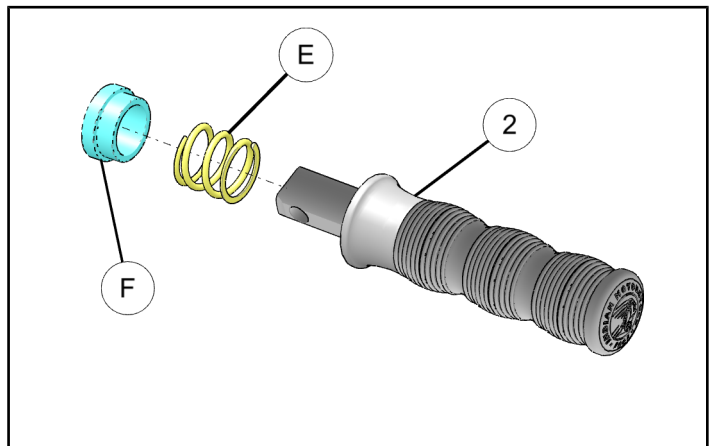
1. Expand retaining ring (A) on bottom of peg pivot pin (B) with two screwdrivers. Use a third screwdriver to pry the retaining ring out of the slot.



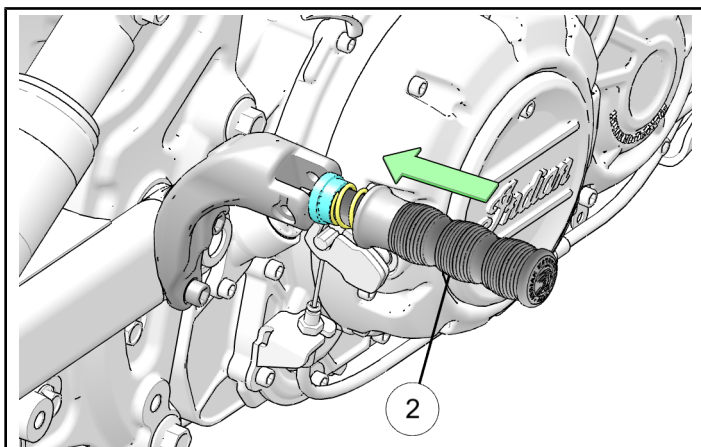
2. Remove the pivot pin (B) from the right-hand peg mount and remove the peg (D) with plastic washer (C).



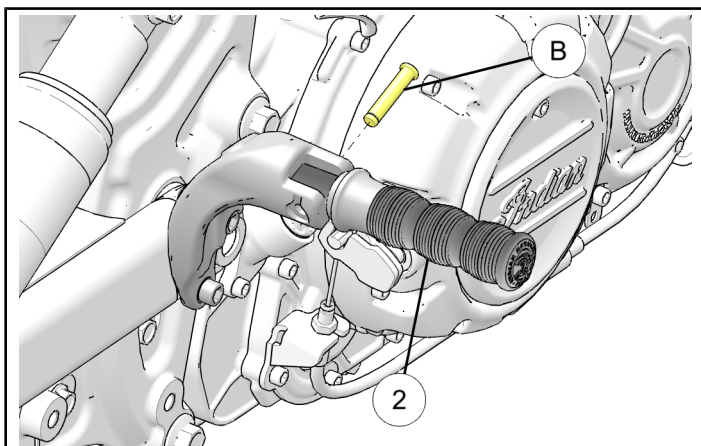
3. Install spring (E) on right-hand passenger peg (2), then install spring collar (F).



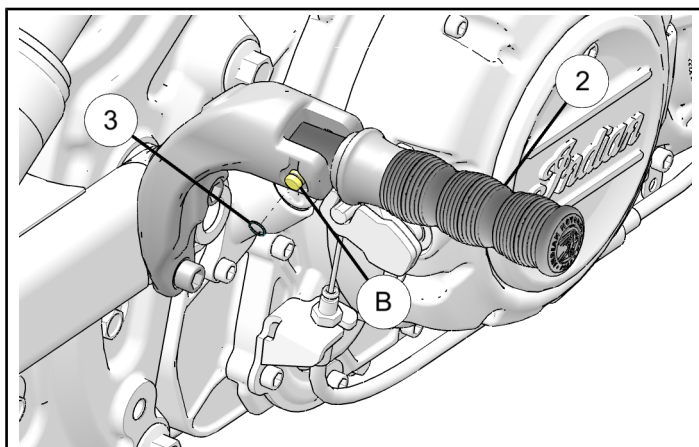
4. Slide the right-hand passenger peg ② into the peg slot by compressing the spring. Compress the spring until pivot pin holes in the mount and peg are aligned.



5. Install the pivot pin ⑧ through the peg mount and passenger peg ②.



6. Install new retaining ring ③ on the pivot pin ⑧.



## INSTRUCTION FEEDBACK FORM

A feedback form has been created for the installer to provide any comments, questions or concerns about the installation instructions. The form is viewable on mobile devices by scanning the QR code or by clicking [HERE](#) if viewing on a PC.

