

EXHAUST SHIELD KIT



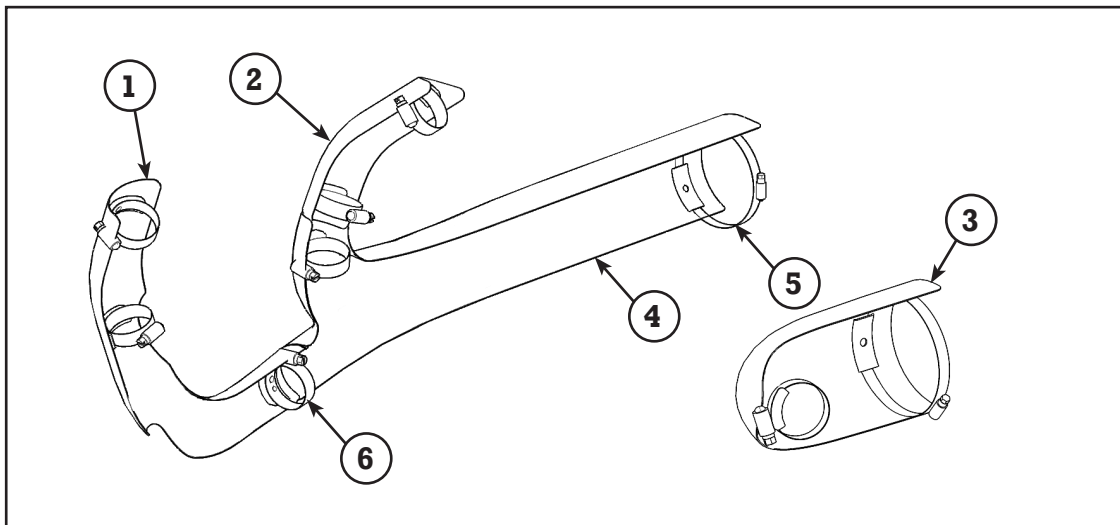
P/N 2880798

APPLICATION

INDIAN MOTORCYCLES WITH THE THUNDERSTROKE 111 ENGINE.

BEFORE YOU BEGIN

Read these instructions and check to be sure all parts and tools are accounted for. Please retain these installation instructions for future reference and parts ordering information. For your safety, and to ensure a satisfactory installation, perform all installation steps correctly in the sequence shown below.



KIT CONTENTS

Ref	Qty	Part Description	Part Number
1	1	Weld-Exh,Shield,Headpipe,Front	1262342
2	1	Weld-Exh,Shield,Headpipe,Rear	1262343
3	1	Weld-Shield,Transition,LH	1262397
4	1	Weld-Exh,Shield,Transition,RH	1262531
5	2	Clamp-Worm Drive,3.69 DIA	7081626
6	7	Clamp-Hose,SAE 24	7082077
	1	Instructions	9925708

TOOLS NEEDED

Flat head screw driver

M8 Allen Head Wrench

Torque wrench

APPROXIMATE ASSEMBLY TIME

45 mins

IMPORTANT

Your Indian EXHAUST SHIELD KIT is exclusively designed for your vehicle. Please read the installation instructions thoroughly before beginning. Installation is easier if the vehicle is clean and free of debris. For your safety, and to ensure a satisfactory installation, perform all installation Steps correctly in the sequence shown.

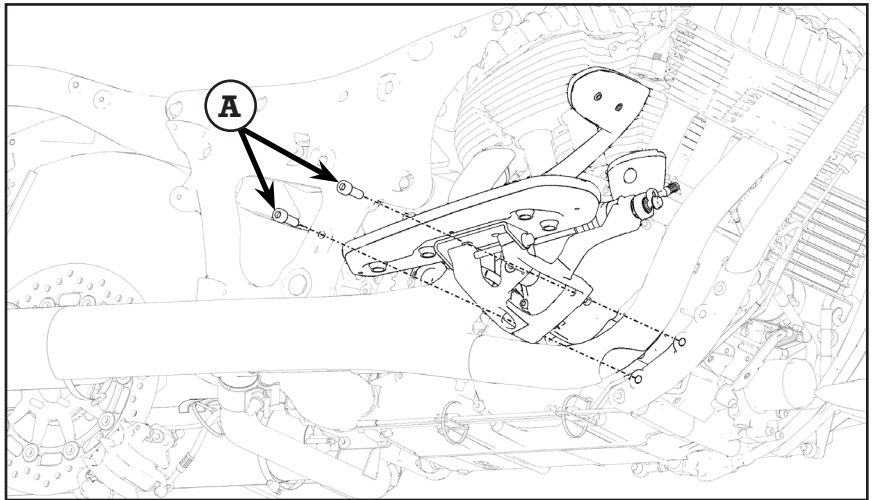
INSTALLATION INSTRUCTIONS

Vehicle Preparation

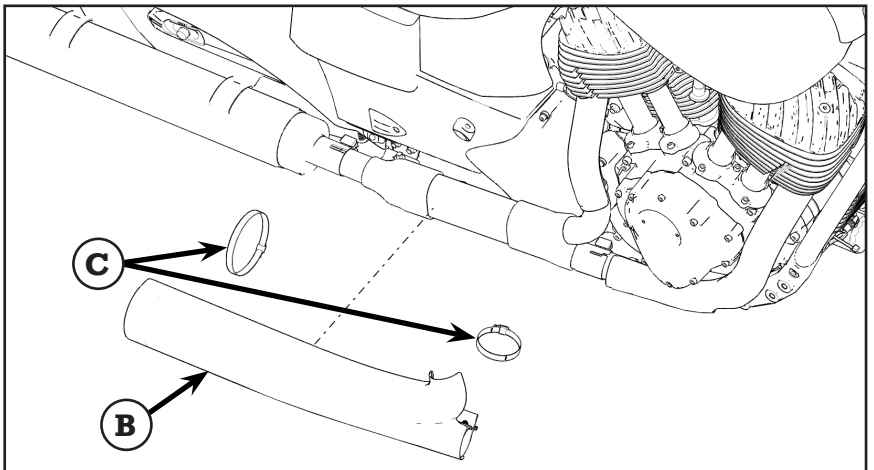
1. Make sure all exhaust and surrounding engine components cool before beginning.

Removal - Stock Heat Shields

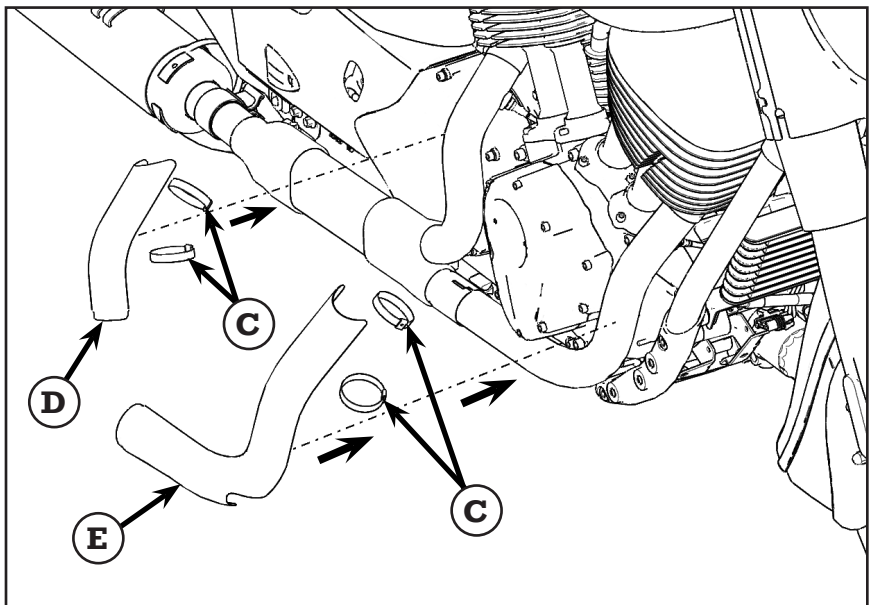
1. Remove the two mounting bolts (A) of the RH foot control and brake lever using the M8 allen head wrench. See figure. Let the assembly hang from the bike onto your work surface. Retain screws for installation Step 4.



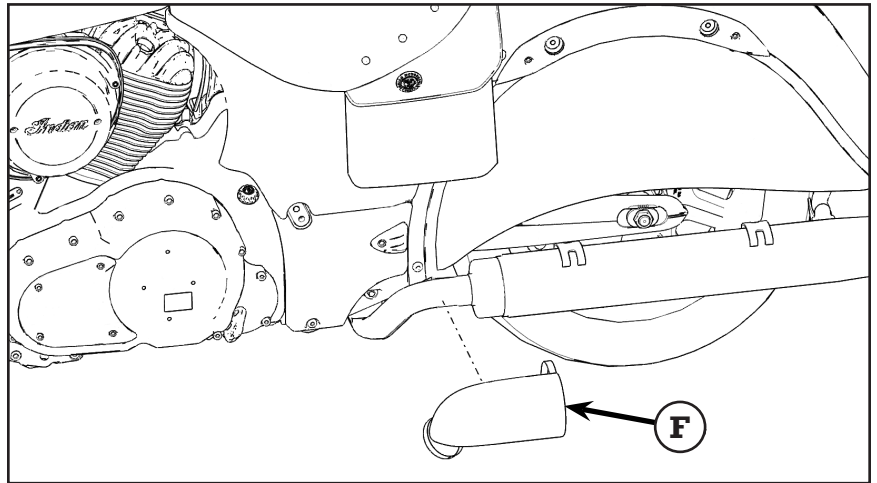
2. Remove the large heat shield (B) first by cutting off the two band clamps (C). Important do not cut through any exhaust components when removing the band clamps as shown in figure.



3. Cut through band clamps (C) of two remaining heat shields (D) and (E) and slide them down the exhaust pipe away from the engine to remove as shown in figure.

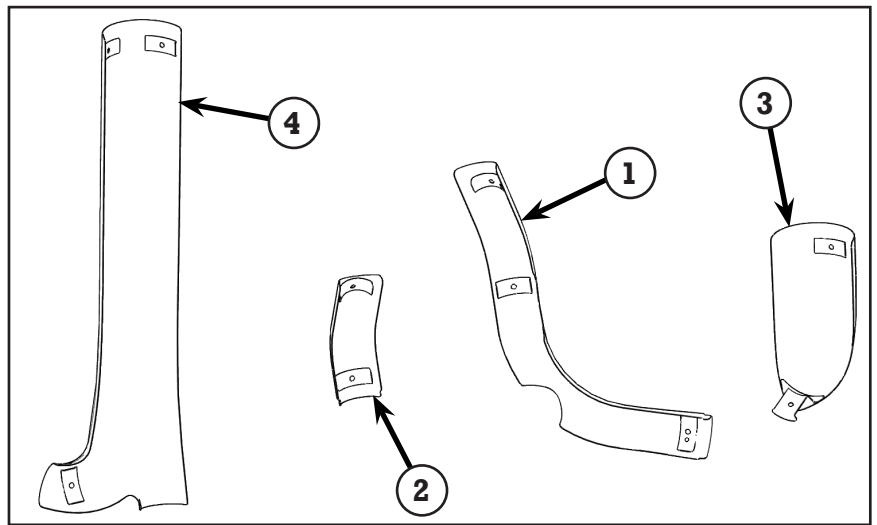


- Remove heat shield (F) on the left side of the bike by cutting through the band clamp and then use the flat head screw driver to remove the worm drive clamp. See figure.
- Discard all chrome heat shields and band clamps.

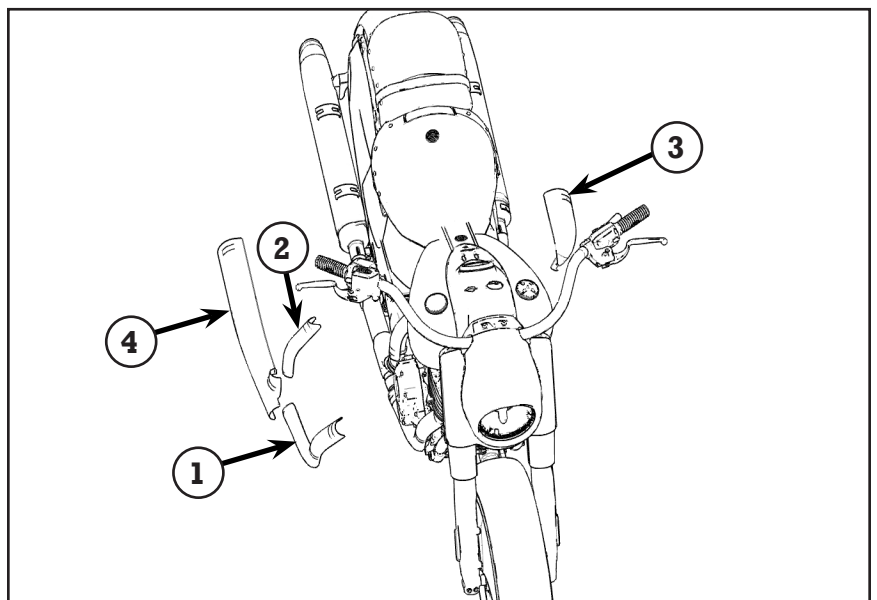


Installation

- On a soft cloth turn black heat shields (1),(2),(3) and (4) over and thread the clamps through each channel.



- Reverse the order of removal for installation by installing heat shield (3) then (1) then (2) and then (4). Thread the tail of the hose clamp into the driver and use the flat head screw driver to tighten the heat shields to the exhaust.



- On the right hand side of the bike it is recommended to install and position all heat shields prior to tightening the hose clamps.
- Reinstall the right hand foot control and torque to 35 +/- 5 ft. lbs. (47.5 +/- 6.8 Nm).

NOTE: Read owner's manual for matte paint cleaning and paint care instructions.