

HEATED/COOLED TOURING SEAT KIT



P/N 2884419-XXX

APPLICATION

Verify accessory fitment at www.indianmotorcycle.com.

BEFORE YOU BEGIN

Read these instructions and check to be sure all parts and tools are accounted for. Please retain these installation instructions for future reference and parts ordering information.

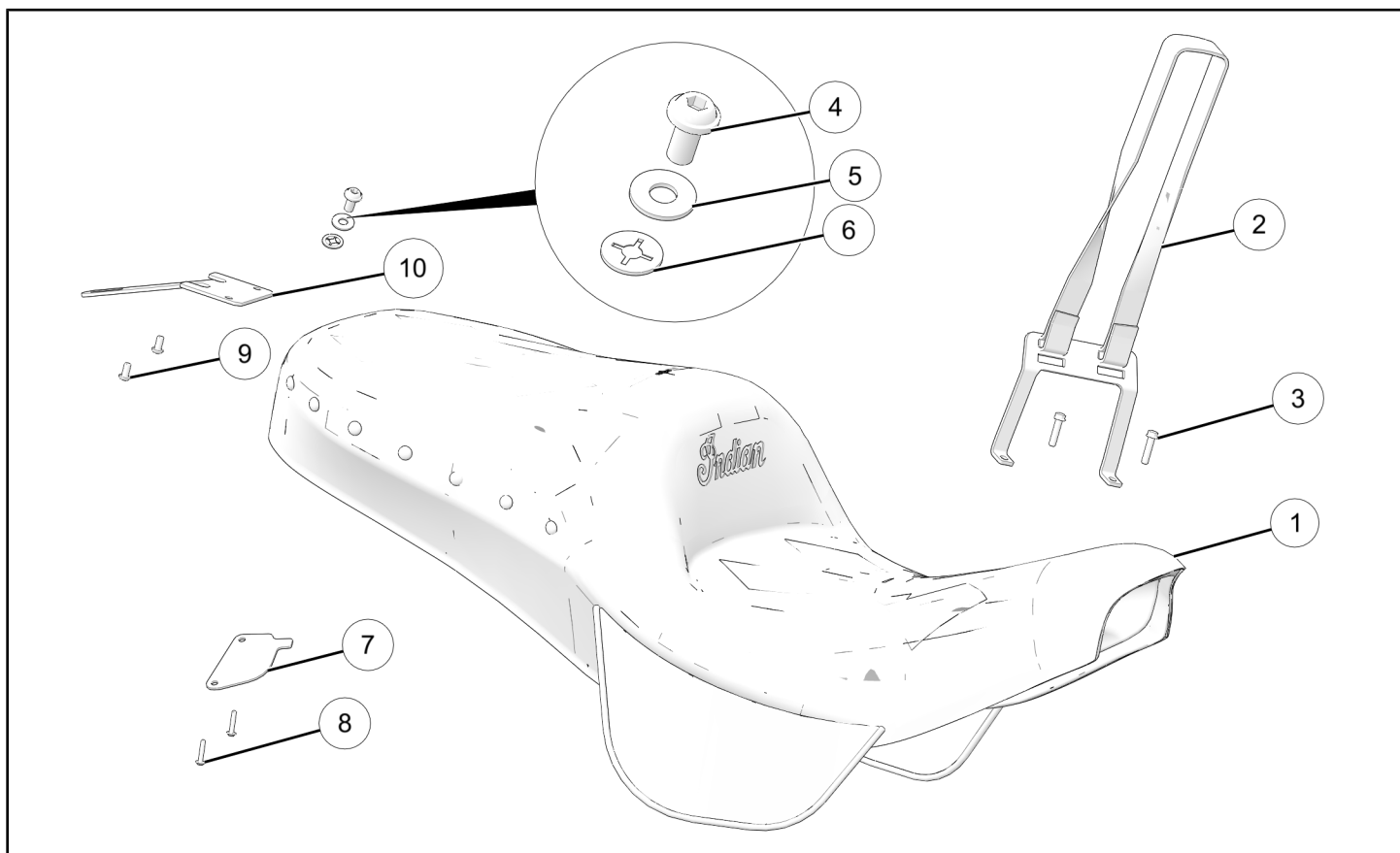
REQUIRED SOLD SEPARATELY

MODEL YEAR 2019+

Only parts for installation of the Indian Motorcycle® Heated/Cooled Touring Seat Kit are included. For complete installation, the following additional kit is required (sold separately):

- One-Piece Seat Harness without trunk, P/N 2415036
- One-Piece Seat Harness with trunk, P/N 2414641

KIT CONTENTS



NOTICE

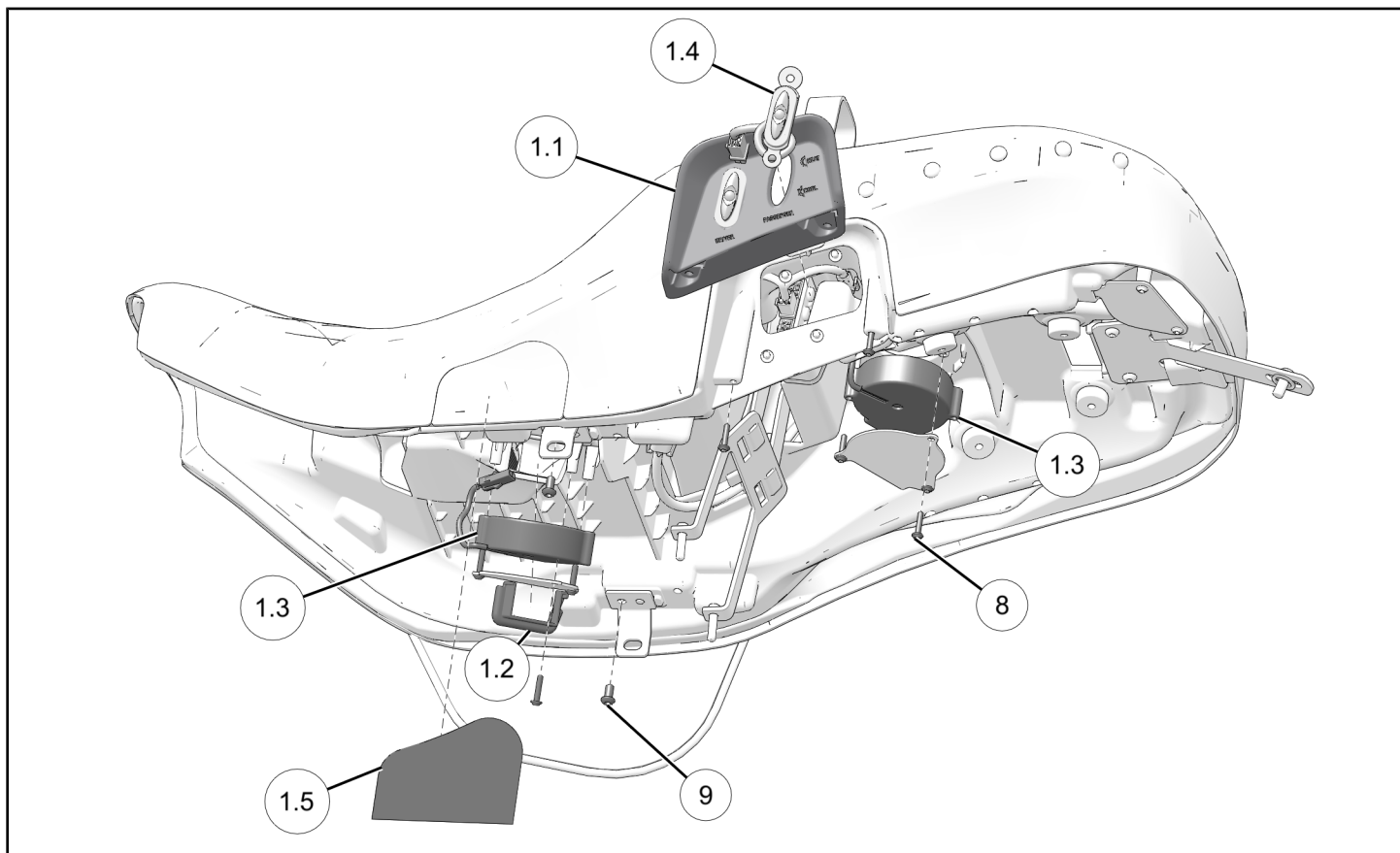
XXX =Indian® color code (For example: VBA = Black)

REF	QTY	PART DESCRIPTION	P/N AVAILABLE SEPARATELY
1	1	Seat Assembly, Heat-Cool	n/a
2	2	Strap-Seat, Passenger (Black)	n/a
3	2	Screw, Hex Flange Head, M6 x 1.0 x 25	7519297
4	1	Screw, Hex Button Head, M8 x 1.25 x 16	7520456
5	1	Washer, 8.4 x 20 x 1.6	7556969
6	1	Washer, M8 x 18.6 x 1.3 Self-Retaining, Nylon, Black	7556884
7	1	Panel, Trunk-Connector, Heat-Cool	5814871
8	2	Screw, Torx® Button Head Flange, M4 x 1.0 x 20	7521153
9	2	Screw, Hex Button Head, M6 x 1.0 x 12	7519000
10	1	Seat Bracket, Rear	n/a

NOTICE

Panel, Trunk-Connector ⑦ and Torx® screws ⑧ are only needed for motorcycles with a trunk.

SERVICE PART DETAIL



NOTICE

Seat flap hidden for clarity of image.

REF	QTY	PART DESCRIPTION	P/N AVAILABLE SEPARATELY
1	1	Seat Assembly, Heat-Cool	n/a
1.1	1	- Bezel, Switch	5456139
1.2	1	- Boot-fan, Seat, Heat-Cool	5417070
1.3	1	- Fan-Seat, Heat-Cool	4018574
1.4	1	- Switch-Seat, Heat-Cool	4018572
1.5	1	- FrogZskin®, Heat-Cool	2689475
8	8	Screw, Torx® Button Head Flange, M4 x 1.0 x 20	7521153
9	2	Screw, Hex Button Head, M6 x 1.0 x 12	7519000

TOOLS REQUIRED

- Safety Glasses
- Socket Set, Hex Bit, Metric
- Socket Set, Metric
- Torque Wrench

IMPORTANT

Your Indian Motorcycle® Heated/Cooled Touring Seat Kit is exclusively designed for your vehicle. Please read the installation instructions thoroughly before beginning. Installation is easier if the vehicle is clean and free of debris. For your safety, and to ensure a satisfactory installation, perform all installation steps correctly in the sequence shown.

INSTALLATION INSTRUCTIONS

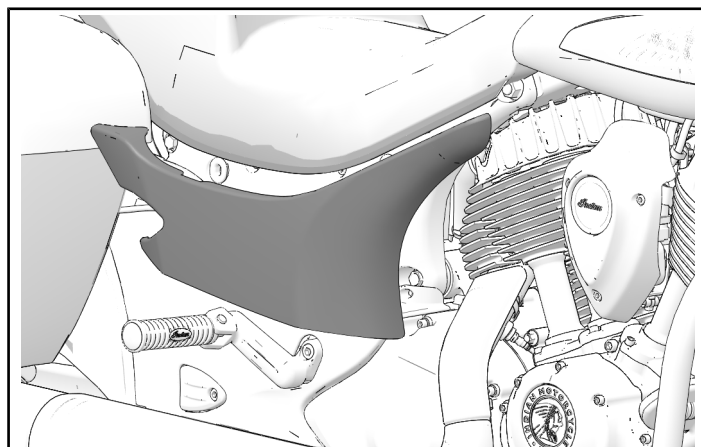
VEHICLE PREPARATION

GENERAL

1. Turn key or ignition switch to **OFF** position and remove key. If equipped with keyless fob, remove fob from proximity of vehicle.
2. Park motorcycle on a flat surface, fully extend kickstand, and make sure vehicle is stable prior to installation.
3. If equipped, remove trunk and store in a safe location.

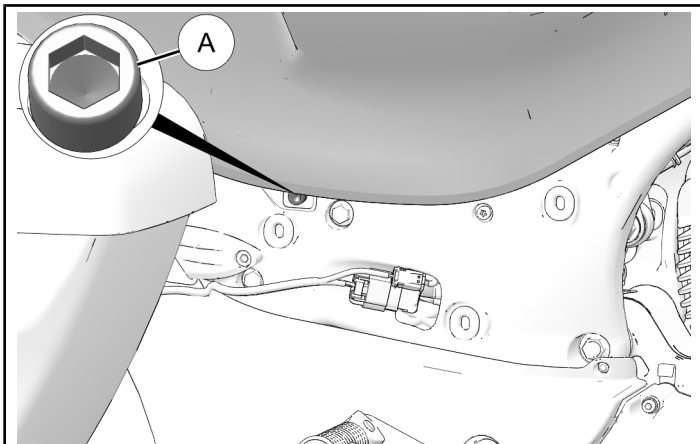
REMOVE SIDE COVERS

1. Remove side covers by grasping firmly and pulling outward. Carefully set aside.

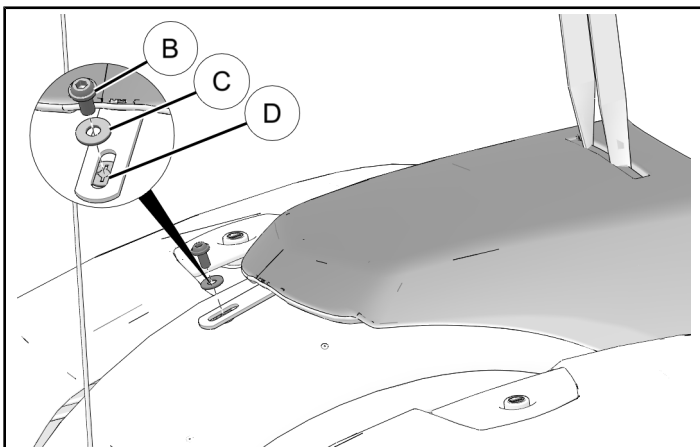


SEAT REMOVAL

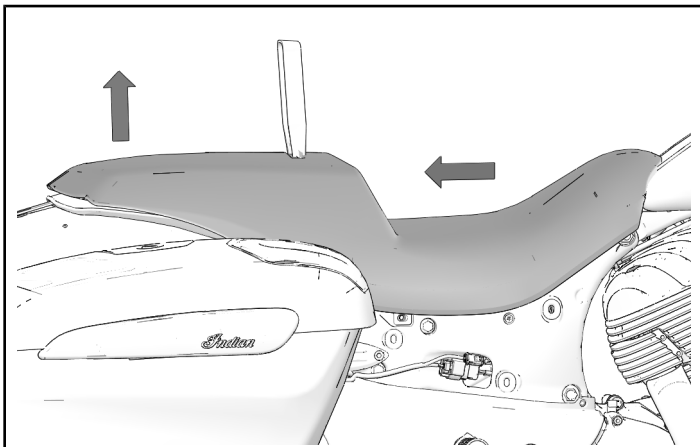
1. Remove and keep one bolt (A) from each side of seat.



2. If removing a touring (2-person) seat, remove one bolt (B) and two washers (C) and (D) from rear fender.

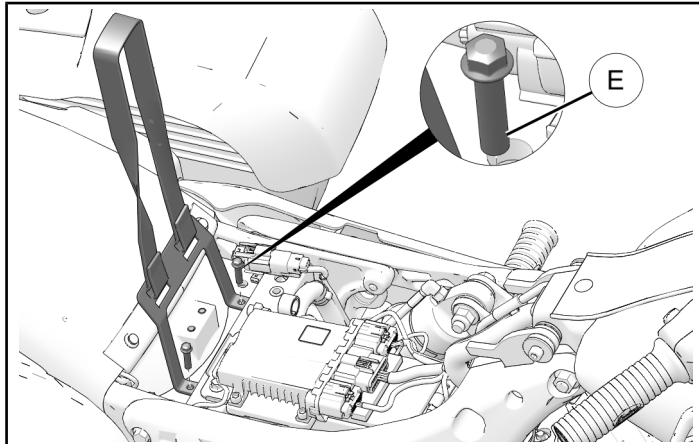


3. Slide seat rearward while lifting on rear and remove seat.



OPTIONAL

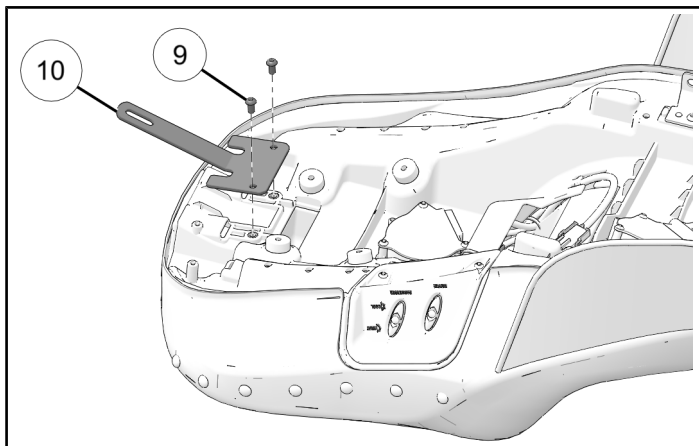
1. Remove seat strap, if equipped, by removing two screws (E).



ACCESSORY INSTALLATION

REAR SEAT BRACKET INSTALLATION

1. Install rear seat bracket (10) using two screws (9). Torque to specification.



TORQUE

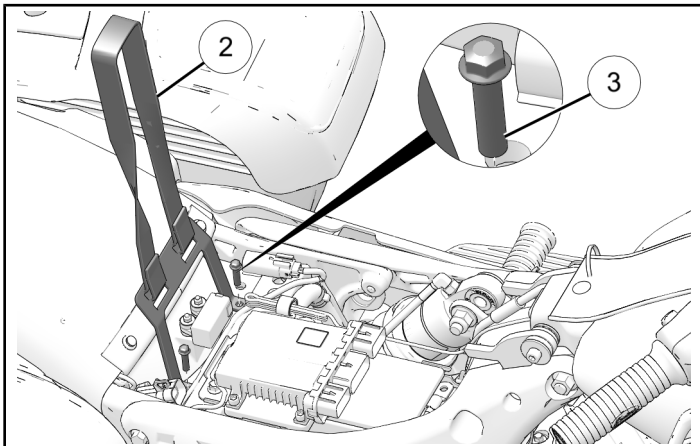
Rear Seat Bracket Screws (9):
36 in-lbs (4 N·m)

SEAT STRAP INSTALLATION (OPTIONAL)

1. Install seat strap ② using two screws ③. Torque screws to specification.

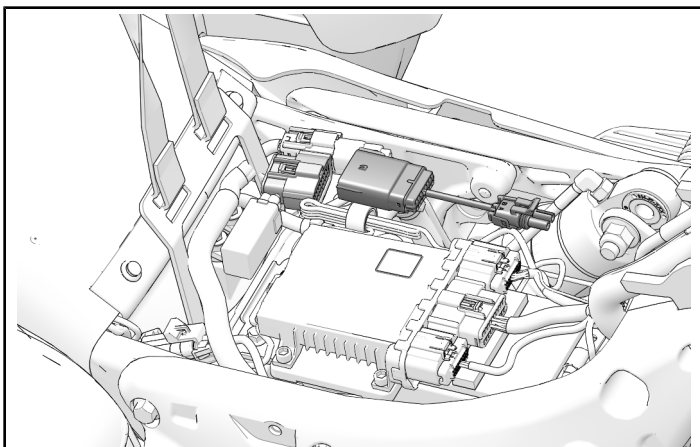
TORQUE

Seat Strap Screw ③:
90 in-lbs (10 N·m)



ONE-PIECE SEAT HARNESS WITHOUT TRUNK, P/N 2415036 INSTALLATION

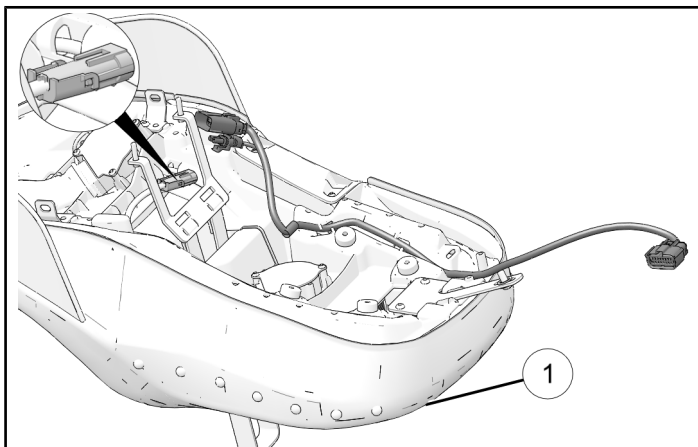
1. Plug harness connector into open connector under seat near rear of motorcycle seating area.



2. Plug connector from heated/cooled seat into harness connector.

ONE-PIECE SEAT HARNESS WITH TRUNK, P/N 2414641 INSTALLATION

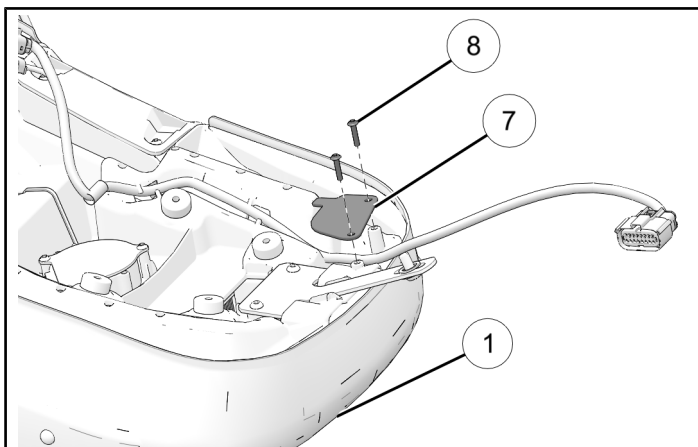
1. Plug harness connector into open connector in bottom of seat ①. Route harness as shown in image.



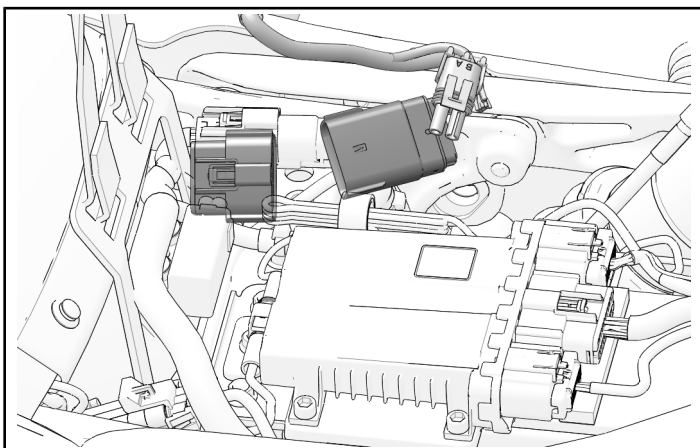
2. Install Trunk-Connector Panel ⑦ with screws ⑧ to bottom of seat ①. Torque screws to specification.

TORQUE

Trunk-Connector Panel Screw ⑧:
13 in-lbs (1 N·m)



3. Plug harness connector into open connector under seat near rear of motorcycle seating area.

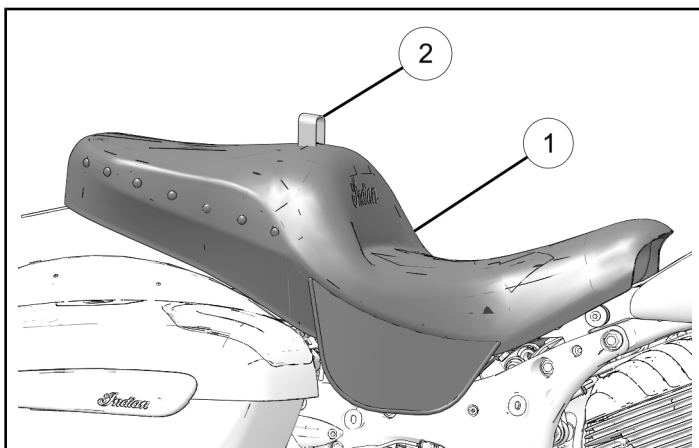


NOTICE

Seat hidden for clarity of image.

HEATED/COOLED SEAT INSTALLATION

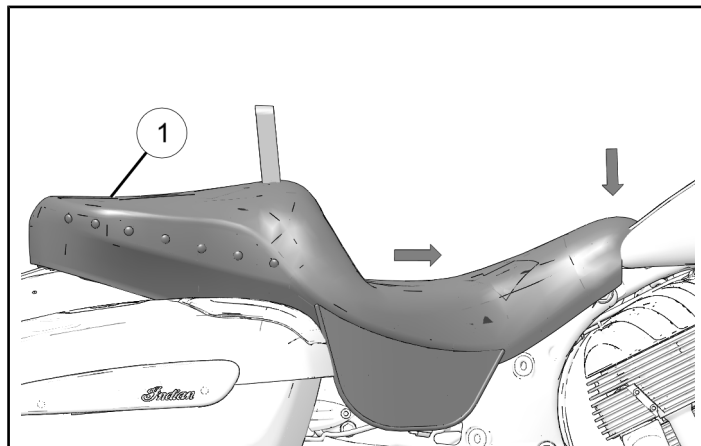
1. Route seat strap ② through slot in bottom of seat through top of seat ①.



2. Place seat onto motorcycle approximately 1.5 inches (3.8 cm) to rear of mounted position. Press down at nose of seat and slide forward to engage frame tabs. Pull up on front of seat to ensure tabs are engaged.

IMPORTANT

Seat front should be secure to motorcycle.



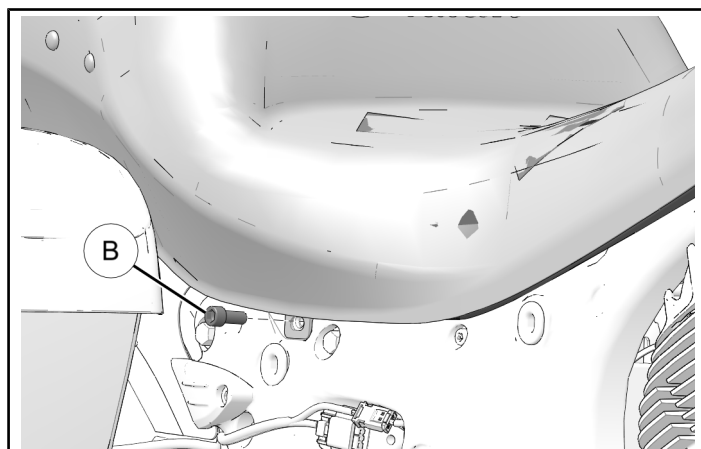
3. Install retained screws ⑧ to affix seat to motorcycle. Torque screws to specification.

NOTICE

Seat flap hidden for clarity of image.

TORQUE

Seat screw ⑧:
18 ft-lbs (24 N·m)



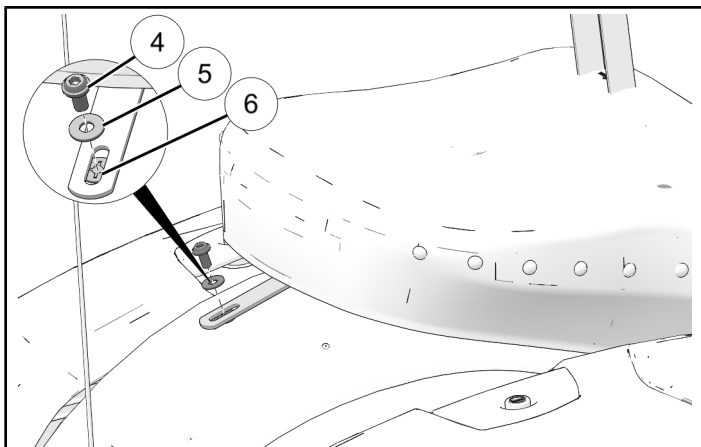
4. Install rear seat mounting screw ④ and washers ⑤ and ⑥. Torque screw to specification.

NOTICE

Plastic washer ⑥ is installed *between* fender and metal tab.

TORQUE

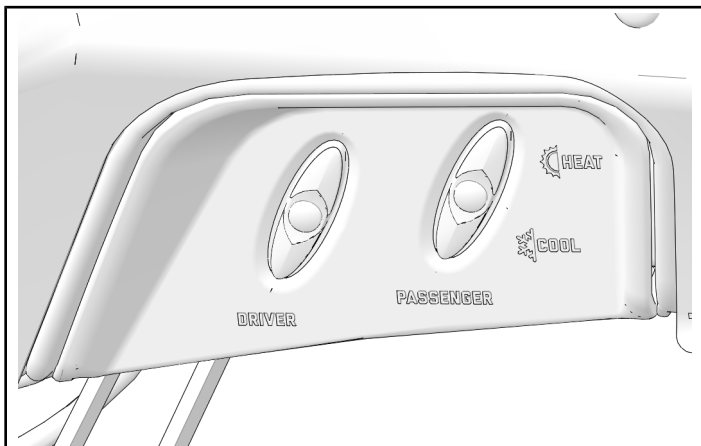
Rear Seat Mounting Screw ④:
90 in-lbs (10 N·m)



OPERATION

SWITCH FUNCTIONS

Switches are located on left hand side of seat. Front switch is for driver seat, rear switch is for passenger seat. Within each heating and cooling mode, there are three settings: Low, Medium, and High.



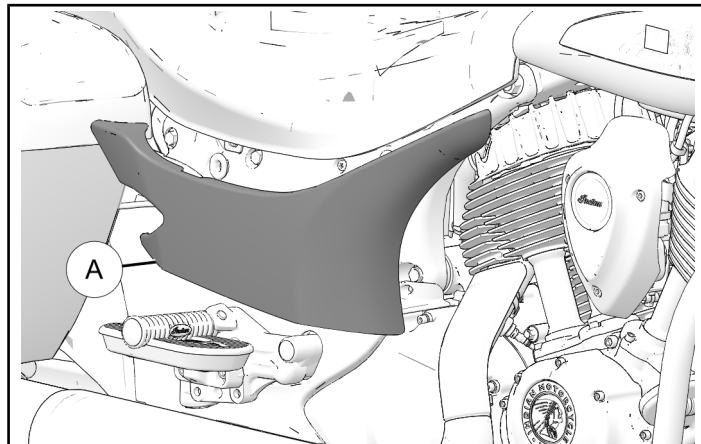
VEHICLE REASSEMBLY

GENERAL

1. Reinstall side covers by aligning tabs and firmly pressing into place.

NOTICE

Seat flap hidden for clarity of image.



2. Reinstall trunk (if equipped).

⚠ WARNING

Seat must be properly installed for safe operation of motorcycle. Failure to properly install seat may lead to loss of control and result in serious injury or death.

NOTICE

To change from Heat mode to Cool mode, or Cool mode to Heat mode, first turn off seat by pushing the center OFF button.

COOLING

Push the down button once to activate Low cool mode. Once activated, push up or down to cycle through Low, Medium, and High cool modes.

NOTICE

Push and hold the down button for two seconds to activate High cool mode.

HEATING

Push the up button once to activate Low heat mode. Once activated, push up or down to cycle through Low, Medium, and High heat modes.

NOTICE

Push and hold the up button for two seconds to activate High heat mode.

INSTRUCTION FEEDBACK FORM

A feedback form has been created for the installer to provide any comments, questions or concerns about the installation instructions. The form is viewable on mobile devices by scanning the QR code or by clicking [HERE](#) if viewing on a PC.

