

# SADDLEBAG AUDIO KIT

P/N 2879656

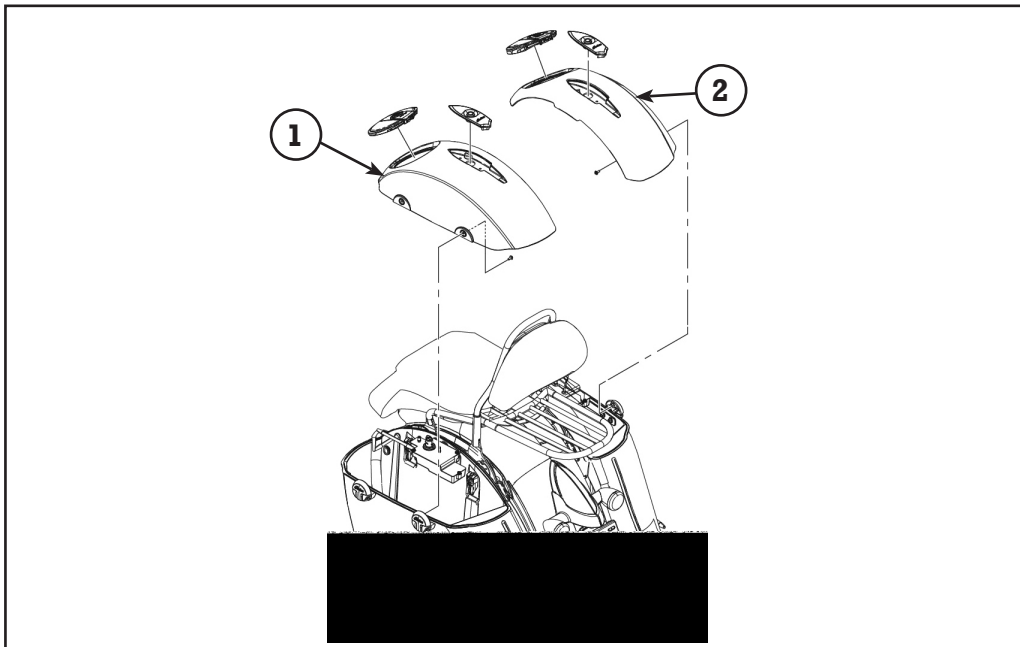


## APPLICATION

INDIAN TOURING WITH HARD SADDLEBAGS

## BEFORE YOU BEGIN

Read these instructions and check to be sure all parts and tools are accounted for. Please retain these installation instructions for future reference and parts ordering information. For your safety, and to ensure a satisfactory installation, perform all installation steps correctly in the sequence shown below.



## KIT CONTENTS

Ref	Qty	Part Description	Part Number
1	1	Lid-Saddlebag, Audio, LH	5450593
2	1	Lid-Saddlebag, Audio, RH	5450594
	1	Instructions	9924449

**IMPORTANT:** To complete this installation, the additional kit is needed:

Kit-Audio, Saddlebag 2879816-156 (chrome) or 2879816-266 (black) (includes speakers, amplifier, mounting brackets, and grilles in option of black or chrome).

## TOOLS NEEDED

Torque Wrench (in-lbs. and ft. lbs.)  
Drill and 5/8" Diameter Drill Bit  
6 mm External Hex Socket Wrench  
5 mm External Hex Socket Wrench

Ratchet  
7 mm Socket  
10 mm Socket

## APPROXIMATE ASSEMBLY TIME

60 min

## IMPORTANT

Your Indian SADDLEBAG AUDIO KIT is exclusively designed for your vehicle. Please read the installation instructions thoroughly before beginning. Installation is easier if the vehicle is clean and free of debris. For your safety, and to ensure a satisfactory installation, perform all installation steps correctly in the sequence shown.

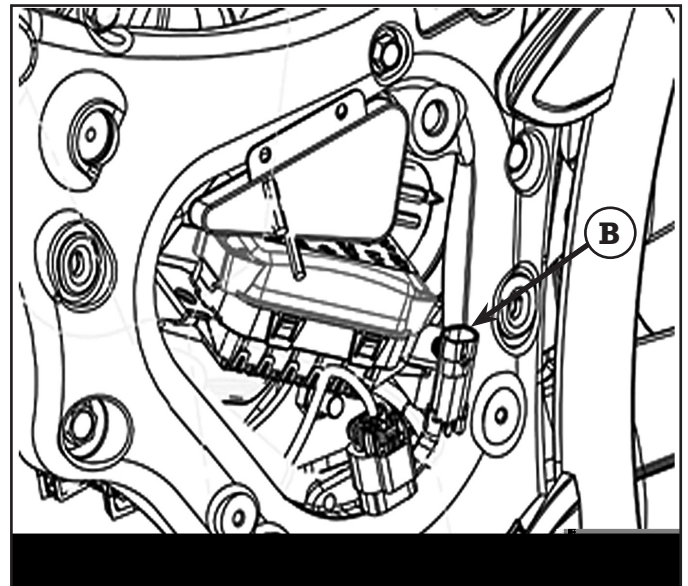
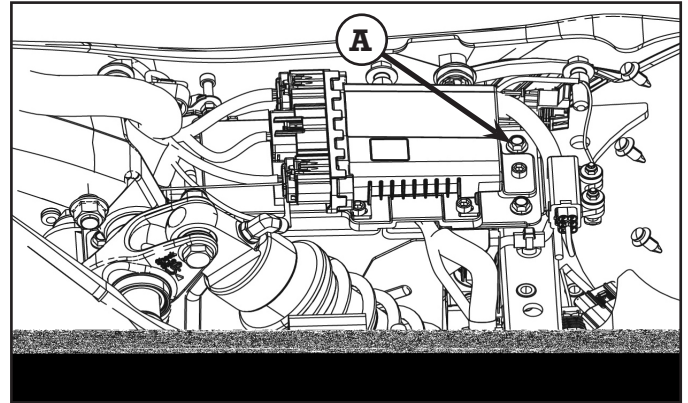
## INSTALLATION INSTRUCTIONS

### Vehicle Preparation Instructions

1. Ensure ignition is off and the vehicle is cooled down.

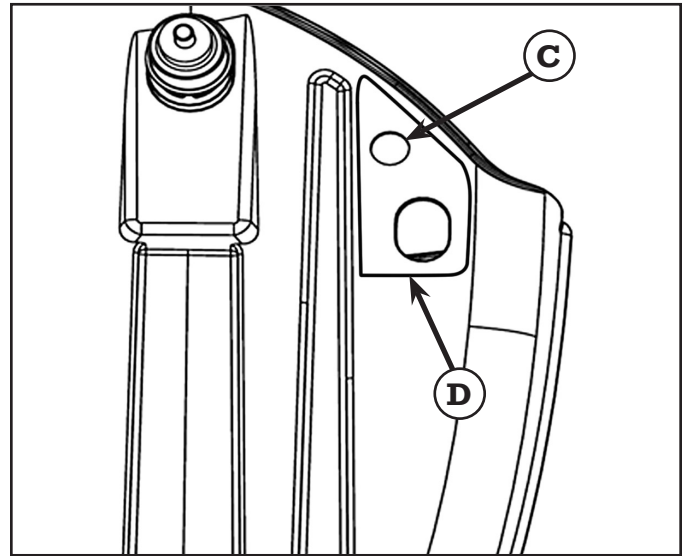
### Removal

1. Remove both the right and left hand side covers.
2. Remove the seat using a 6 mm external hex wrench.
3. This step is needed only if the vehicle does not have accessory driver backrest mount kit (PN 2879543) already installed. If the driver backrest mount is already installed, skip to Step 4. Remove the right hand bolt (A) that fastens the battery box to the frame as shown in figure. This bolt will be re-used.
4. Disconnect the electrical connector (B) on each side that connects to the saddlebag. See figure.
5. Remove the lock mechanism from the stock saddlebag lid by using a 5 mm hex wrench to remove the two recessed Allen head screws from the bottom side of each saddlebag lock. This mechanism will be transferred to the new audio lid. Remove the saddlebag lid lock wire harness from the rubber channel in the lid. Place the lock mechanism and hardware in the saddlebag temporarily.
6. Use a 7 mm socket to remove the stock lids from the saddlebags by removing the screw at each hinge of the lid. Leave the hinge attached to the saddlebag.
7. Remove the saddlebags and set them aside.

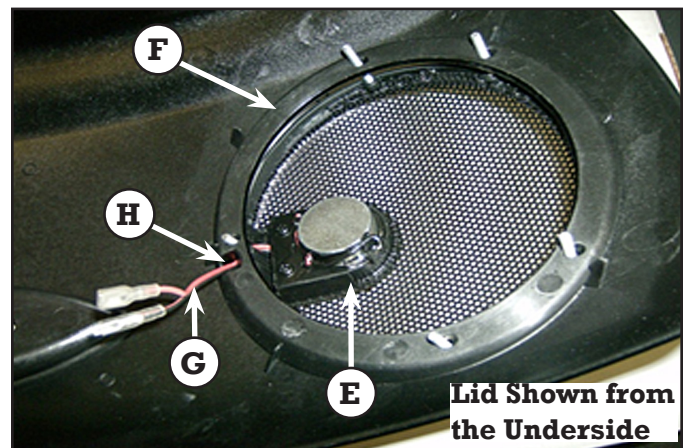


## Installation of Lids / Speakers

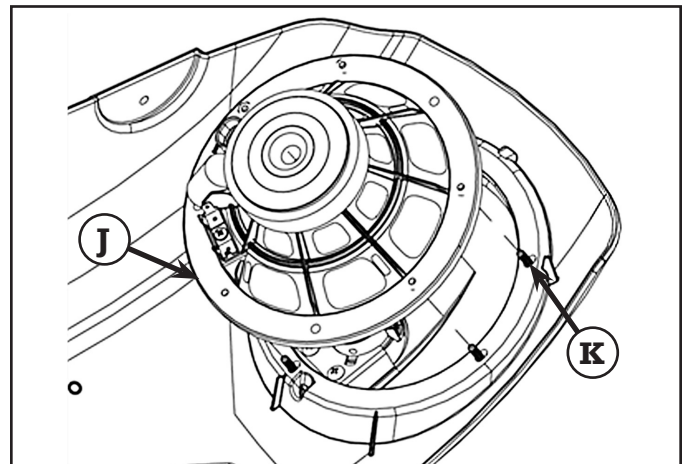
1. Use the template (D) provided in the instructions to drill a 5/8" diameter hole (C) in each saddlebag. This will be where the speaker wires route through as shown in figure.
2. Install the new audio lid onto each saddlebag using the screws that were removed in removal Step 6. Torque to 45 in-lbs. (4.95 Nm).
3. Install the lock mechanism removed in removal Step 5 into each new lid. Torque to 84 in-lbs. (9.24 Nm).



4. Install the left hand grille assembly from kit (PN 2879816) into the left hand lid as shown in figure. There is a difference between the left hand and right hand bezel so ensure the correct side is being installed. When installed correctly, the tweeter (E) will point at the driver. The grille/bezel assembly (F) is installed on the outside of the lid. The tweeter is oriented toward the top of the speaker opening as viewed mounted on the vehicle. Guide the tweeter wires (G) through the wire entry hole (H) in the lid as shown in figure.



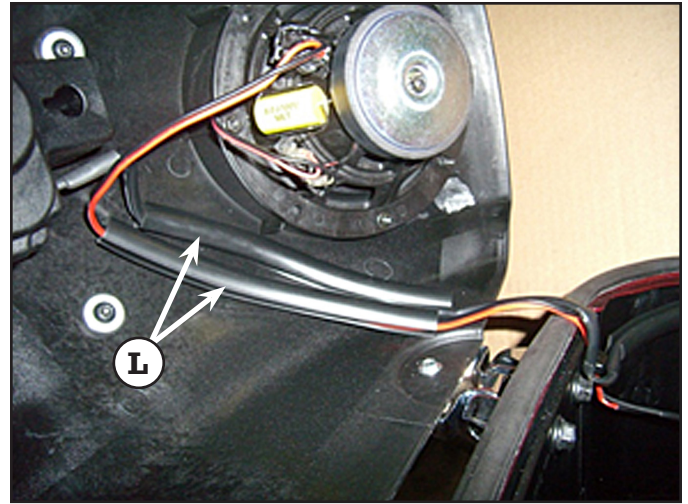
5. Install the speaker from the underside of the lid as shown in figure. Position the speaker (J) so the tweeter wires will reach the terminals on the speaker and notch in the speaker housing lines up with a rib on the saddlebag lid. Connect the tweeter wires to the speaker. Install the five M4 nuts on the studs (K). Torque evenly to 8 in-lbs. (0.88 Nm). Do not over torque to avoid cracking the speaker housing.



6. Route the speaker wires through the 5/8" diameter hole that was drilled in installation Step 1 and install the grommet that is on the speaker wires into the hole. Rubber lube or soapy water can be used to aid installation as shown in figure associated with Step 8.

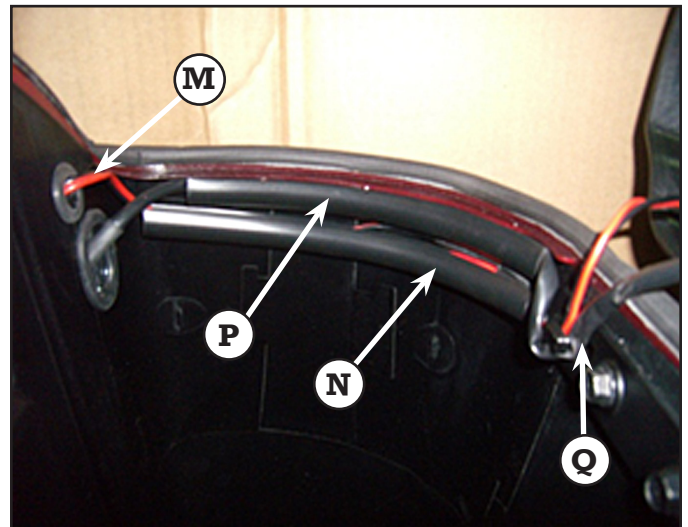


7. Place the saddlebag lid lock wires into one of the wire channels (PN 5522014) (L). Remove the backing paper from Wire Channel (PN 5522014) self-adhesive strip. Affix the Wire Channel with the wires inside to the lid in the same location as the stock lid. Use the stock lid that was removed as a guide. Ensure the channel is not too close to the hinge as it may contact the gasket around the top of the saddlebag. Press the channel firmly onto the lid. Support the lid from the opposite side to ensure the hinges are not overstressed when pressing the channel into place. Protect the painted finish on the top side of the lid with a soft cloth. Place the speaker wires that are adjacent to the speaker into a second wire channel (PN 5522014). Remove the backing paper and affix the second wire channel with the speaker wires in it adjacent to the first wire channel as shown in figure.



8. Install the speaker wires (M) inside the saddlebag into a third wire channel (PN 5522014) (N). Affix the third wire channel into the saddlebag just below the existing wire channel (P). Tuck the speaker wire into the plastic clip (Q) near the hinge with the lock wires as shown in figure.

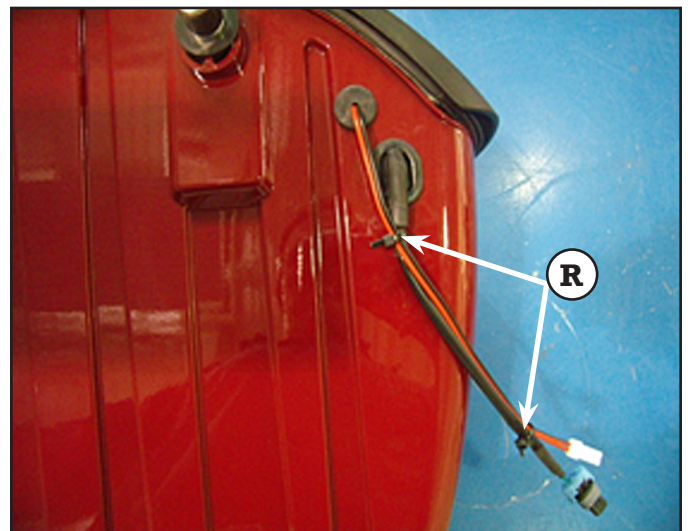
**NOTE:** Ensure adequate slack to open and close the lid without pulling or pinching the wires. Secure speaker wire into plastic clip.



9. Use two nylon cable ties (R) to secure the speaker wires to the lock wire harness between the saddlebag and the connector as shown in figure.

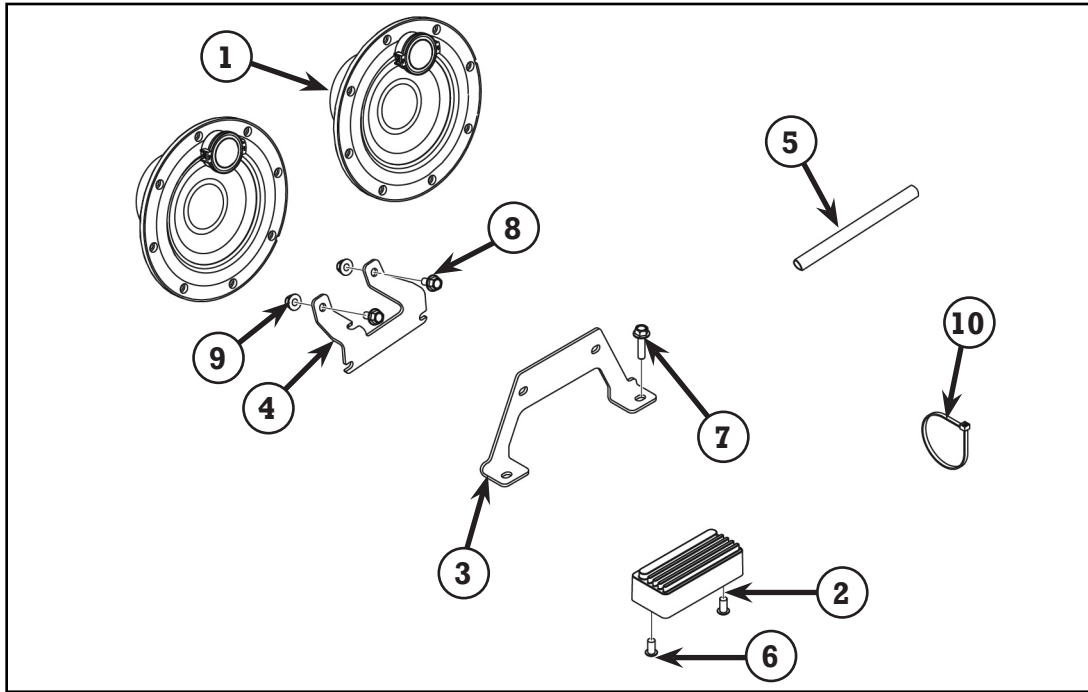
10. Install the saddlebag on the vehicle and reconnect the saddlebag lock electrical connector.

11. Repeat Steps 4 through 10 for the right hand saddlebag.



## INSTALLATION OF AMPLIFIER WITH DRIVER BACKREST ACCESSORY

**NOTE:** The procedure below outlines the installation process of the amplifier when the vehicle has the accessory driver backrest mount kit (PN 2879543) installed. If the driver backrest accessory is not on the vehicle, skip to the next section “Installation of Amplifier without Driver Backrest Accessory”.

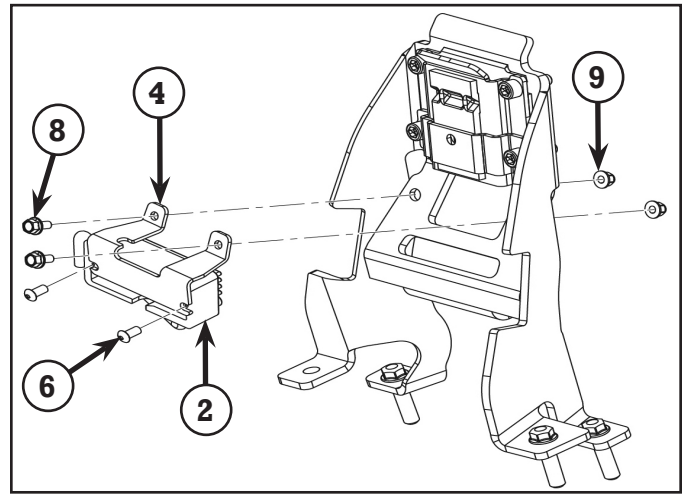


### KIT CONTENTS

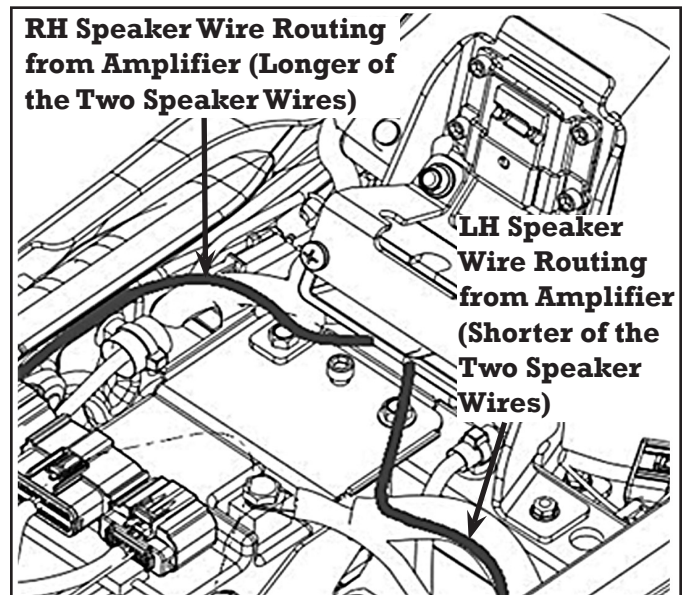
Ref	Qty	Part Description	Part Number
1	1	Audio Assembly, Bag Speakers	1019973
2	1	Audio Amplifier	4014413
3	1	Amplifier Mount Bracket	5260786
4	1	Amplifier Mount Bracket, W/DBR	5257980
5	6	Wire Channel	5522014
6	2	Screw-1/4-20x1/2-BH TRX-Y	7515178
7	1	Screw-HXFL-M6x1.0x25 8.8 ZPB	7517751
8	2	Screw-HXFL-M6x16, blk	7518591
9	2	Nut-M6x1.0, Flange, Nyloc-Olive D	7547339
10	10	Panduit Strap	7080138
	1	Instructions	9924449

## INSTALLATION INSTRUCTIONS

1. Locate Bracket (PN 5257980) (4) in kit (PN 2879816) as shown in assembly installation of amplifier.
2. Install the amplifier (2) to bracket (PN 5257980) (4) using the two screws (PN 7515178) (6) provided as shown in figure. Torque to 84 in-lbs. (9.24 Nm). Install the bracket / amplifier assembly to the backrest mount using the two screws (PN 7518591) (8) and nuts (PN 7547339) (9) provided. Torque to 84 in-lbs. (9.24 Nm).

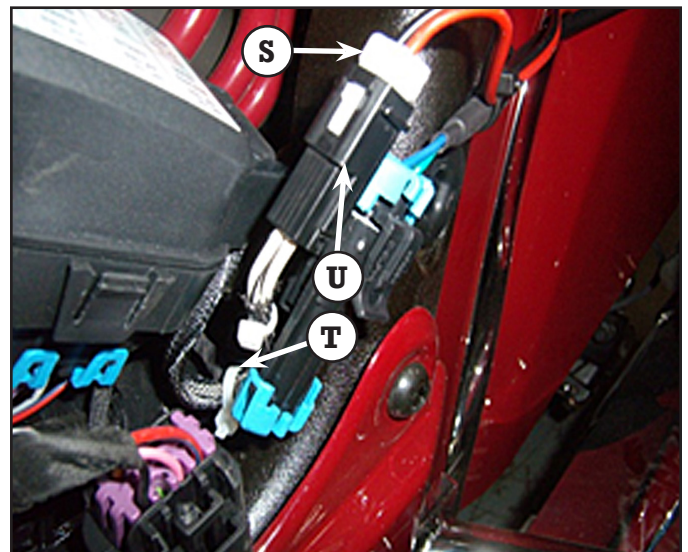


3. Plug in the sixteen pin connector on the vehicle wire harness located underneath seat to the sixteen pin electrical connector on the amplifier.
4. There are two speaker wires coming from the amplifier. The shorter of the two is the LH channel. Route the LH speaker wire from the amplifier along the positive battery cable as shown in figure and secure to the battery cable with two nylon cable ties.



5. Route the speaker connector from amplifier (S) out the left side of the vehicle next to the saddlebag electrical connector as shown in figure and secure it to the LH saddlebag lock harness connector with a nylon cable tie (T). Ensure the speaker wire has adequate clearance from the shock and spring or any other moving parts. Connect the speaker wire coming from the LH saddlebag (U) to the LH speaker wire coming from the amplifier.

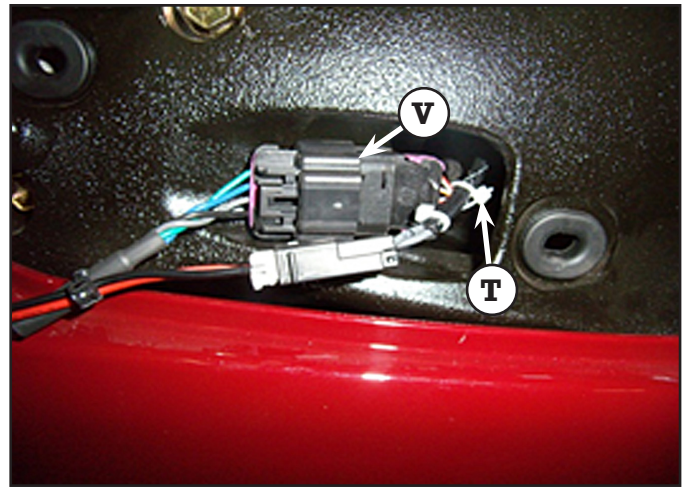
**NOTE:** Use cable tie to secure speaker wire from amplifier to saddlebag lock wire.





- The RH speaker wire coming from the amplifier (the longer of the two speaker wires) should be routed and secured using two cable ties along the main vehicle harness as shown in figure associated with Step 4. Route the connector so that it comes through the window on the RH side of the frame next to the RH saddlebag lock harness connector (V) as shown in figure. Secure the RH speaker wire to the RH saddlebag lock harness connector using a nylon cable tie (T). Connect the RH speaker wire coming from the RH saddlebag to the speaker connector coming from the amplifier.

**NOTE:** Secure RH speaker wire to RH saddlebag lock harness using nylon cable tie.



- Reinstall seat and torque fasteners to 18 ft. lbs. (24.3 Nm).
- Reinstall side covers, making sure no wiring is pinched.
- The radio may be set so the fade is 100% on front speakers. Toggle through the radio controls to distribute sound to the rear speakers.
- Connect Digital Wrench to verify the radio calibration is up to date.

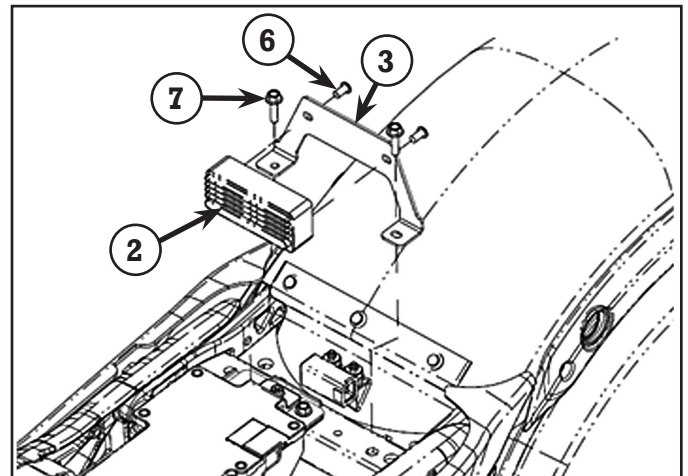
### **INSTALLATION OF AMPLIFIER WITHOUT DRIVER BACKREST ACCESSORY**

**NOTE:** The procedure below outlines the installation process of the amplifier when the vehicle does not have the accessory driver backrest mount kit (PN 2879543) installed.

- Locate Bracket (PN 5260786) in kit (PN 2879816) as shown in assembly installation of amplifier.
- Install the amplifier (2) to bracket (PN 5260786) (3) using the two screws (PN 7515178) (6) provided as shown in figure. Torque to 84 in-lbs. (9.24 Nm).
- Install the bracket / amplifier assembly to the vehicle using the screw (PN 7517751) (7) provided and the screw removed in removal Step 3. Torque to 84 in-lbs. (9.24 Nm).

**NOTE:** Install bracket / amplifier assembly rearward of the chassis harness.

- Refer to Steps 3 through 10 in the previous section "Installation of Amplifier with Driver Backrest Accessory" to complete the installation.



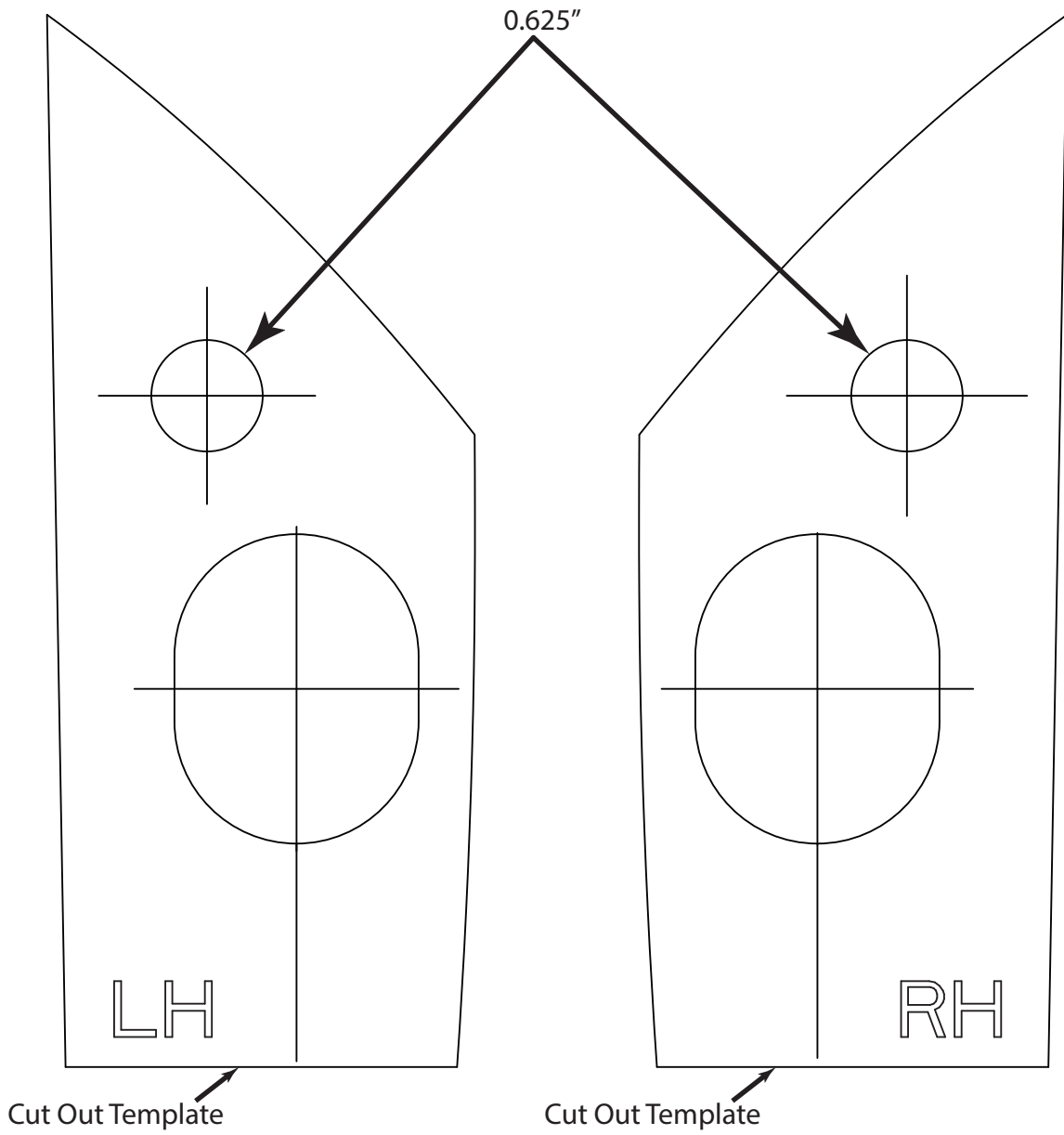
### **⚠ WARNING**

- Do not contact battery terminals.**
- Ensure no wires are pinched or pulled too tight.**
- Torque all fasteners to specification.**

**This Page Intentionally Left Blank**



**Template**



Template 9924449