

TRUNK RACK KIT

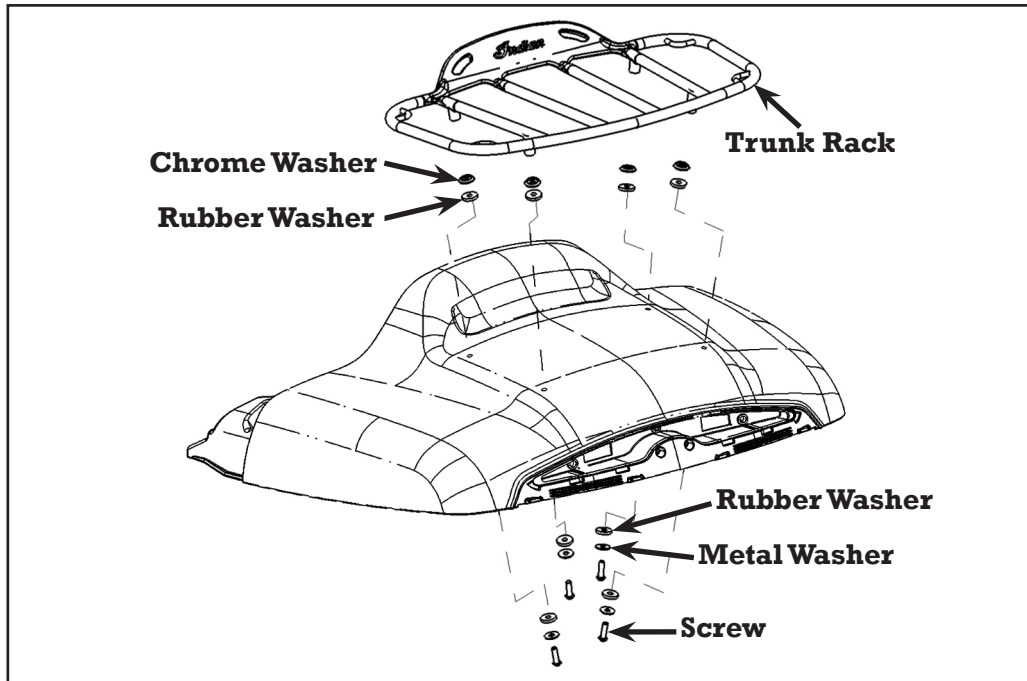
P/N 2880044



Application

Indian Motorcycle Chieftain with Indian Motorcycle Accessory Trunk Kit

NOTE: Before you begin, read these instructions and check to be sure all parts and tools are accounted for in package. Please retain these installation instructions for future reference and parts ordering information. For your safety, and to ensure a satisfactory installation, perform all installation steps correctly in the sequence shown below.



Kit Contents:

Quantity	Part Description	Part Number
1	Trunk Rack	1020282
4	Chrome Washer	7556385
8	Rubber Washer	5814206
4	Metal Washer	7556064
4	Button Head Screw-M6X1.0X20	7517782
1	Instructions	9924895

You will need to supply:

Power Drill	9 mm Drill Bit	Torque Wrench
Masking/ Painter's Tape	4 mm Hex Key	

APPROXIMATE ASSEMBLY TIME: 20 minutes

VEHICLE PREPARATION INSTRUCTIONS

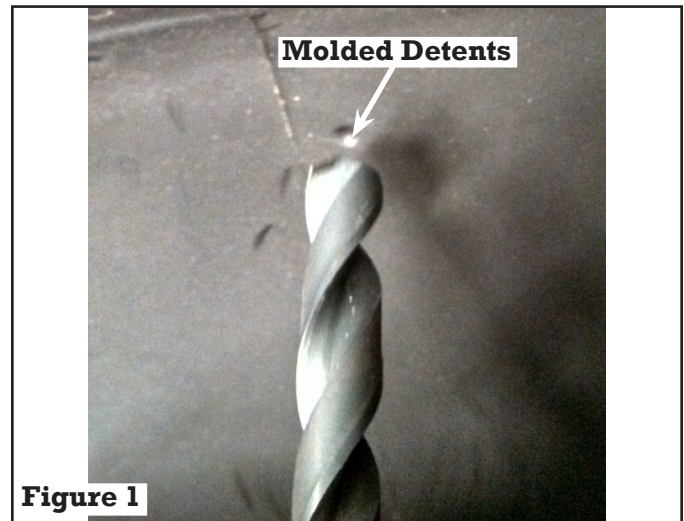
1. Place strips of masking tape on the painted side of the trunk lid behind the molded detents shown in Figure 1.

INSTALLATION INSTRUCTIONS

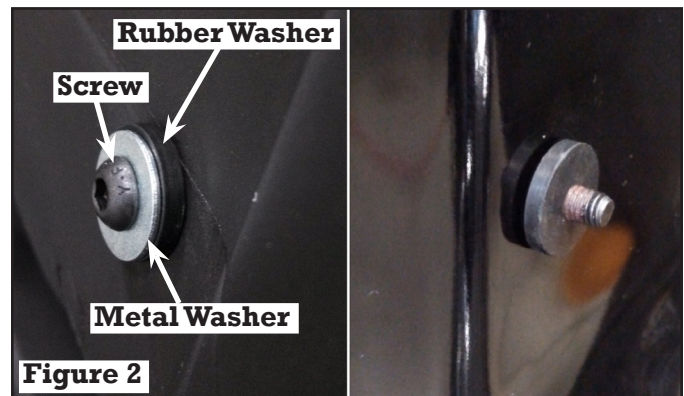
Installation:

1. Drill four 9 mm holes in the trunk lid using the molded detents as locators to start each hole. See Figure 1.

NOTE: For best results, drill perpendicular to the trunk's surface.



2. Remove the tape and burrs from the painted side of the trunk lid.
3. With the trunk lid open, place a screw (PN 7517782) in each hole from the inside of the lid. Make sure each screw has a metal washer (PN 7556064) and a rubber washer (PN 5814206) on it before it goes into the drilled holes. See Figure 2.
4. Place a rubber washer on each screw from the painted side of the lid. Doing this will hold the screws in place during the remaining steps. See Figure 2.



5. Line up the trunk rack (PN 1020282) on the screws so that the "Indian" deboss is closest to the seat and place a chrome washer (PN 7556385) on each screw before starting the threads. Note that the wider face of the chrome washer should be touching the outside rubber washer (PN 5814206). See Figure 3.
6. Torque the screws to 12 in-lbs (1.35 Nm).

