

LICENSE PLATE FRAME KIT

P/N 2880800-156 Script Frame (Chrome); 2880800-266
Script Frame (Gloss Black); 2880801-156 War Bonnet Frame
(Chrome); 2880801-266 War Bonnet Frame (Gloss Black)

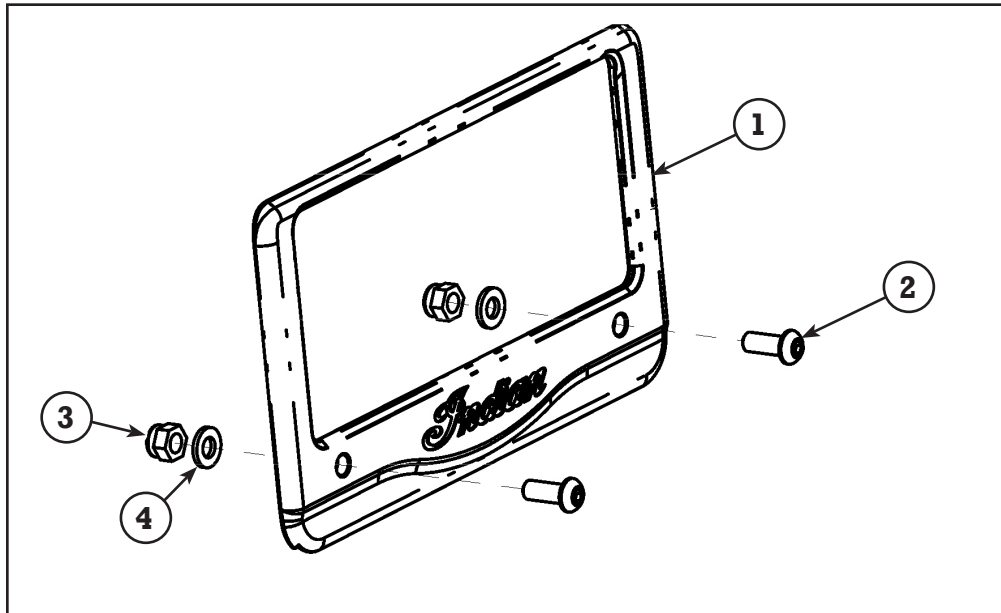


APPLICATION

2014-2016 INDIAN MOTORCYCLES WITH THE THUNDERSTROKE 111

BEFORE YOU BEGIN

Read these instructions and check to be sure all parts and tools are accounted for. Please retain these installation instructions for future reference and parts ordering information.



KIT CONTENTS

Ref	Qty	Part Description	Part Number
1	1	Frame-Script	5139764 (Kit 2880800)
		Frame-Warbonnet	5139765 (Kit 2880801)
2	2	Screw M6X1.0X16	7517494
3	2	Nut - Hex M6X1.0	7546704
4	2	Washer - 6.4X12.5X1.6	7556337
	1	Instructions	9925726

TOOLS NEEDED

Socket Wrench
M4 Hex Socket
Torque Wrench
10 mm Socket and Wrench

APPROXIMATE ASSEMBLY TIME

10 mins

IMPORTANT

Your Indian LICENCE PLATE FRAME KIT is exclusively designed for your vehicle. Please read the installation instructions thoroughly before beginning. Installation is easier if the vehicle is clean and free of debris. For your safety, and to ensure a satisfactory installation, perform all installation steps correctly in the sequence shown.

INSTALLATION INSTRUCTIONS

1. Remove the existing fasteners securing the license plate to the bracket.
2. Using screws and nuts supplied with kit attach the plate and frame to the bracket on the motorcycle.
3. Torque to 84 in-lbs. (9.5 Nm).