

# SIDE NUMBER PLATES



P/N 2883505

## INTERNATIONAL INSTRUCTIONS

### DE DEUTSCH

Laden Sie die neuesten PDF-Anweisungen von [www.indianmotorcycle.de](http://www.indianmotorcycle.de) herunter.

### FR FRANÇAIS

Télécharger les dernières instructions en format PDF sur [www.indianmotorcycle.fr](http://www.indianmotorcycle.fr).

### IT ITALIANO

Scarica l'ultima versione delle istruzioni in formato PDF da [www.indianmoto.it](http://www.indianmoto.it).

### EN ENGLISH

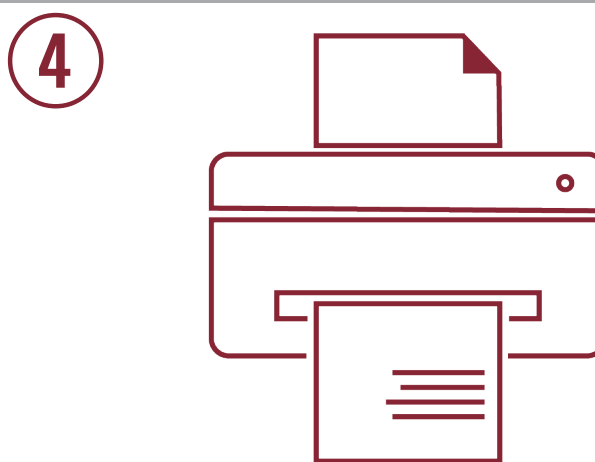
Download the latest PDF instructions from [www.indianmotorcycle.com](http://www.indianmotorcycle.com).

### ES ESPAÑOL

Descargue las instrucciones más recientes en formato PDF de [www.indianmotorcycle.mx](http://www.indianmotorcycle.mx) / [www.indianmotorcycle.es](http://www.indianmotorcycle.es).

### ZH 中文

从[www.indianmotorcycle.cn](http://www.indianmotorcycle.cn)下载最新的PDF说明。



## APPLICATION

Verify accessory fitment at [www.indianmotorcycle.com](http://www.indianmotorcycle.com).

### IMPORTANT

*Side Number Plates Kit* P/N 2883505 is not compatible with the following:

- *Side Bag Kit* P/N 2883514
- *Messenger Bag Kit* P/N 2883500
- *Side Bag Rack Kit* P/N 2883516

## BEFORE YOU BEGIN

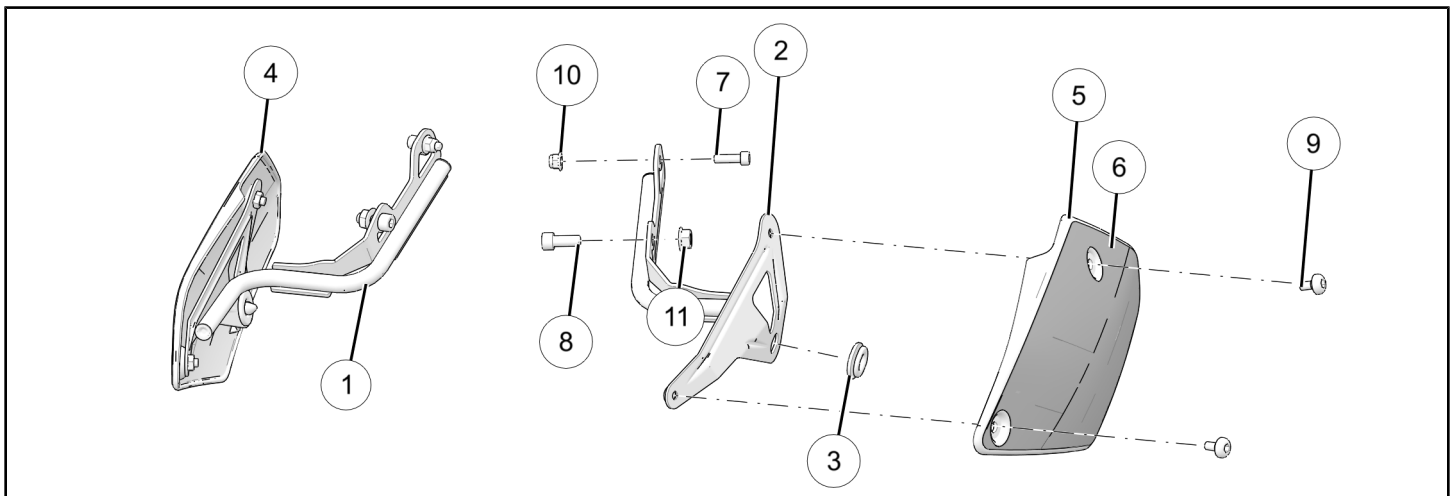
Read these instructions and check to be sure all parts and tools are accounted for. Please retain these installation instructions for future reference and parts ordering information.

## REQUIRED SOLD SEPARATELY

Only parts for installation of the *Side Number Plates Kit* are included. For complete installation, the following additional kit is required (sold separately):

- *Accessory Mounting Kit*, P/N 2883842

## KIT CONTENTS



REF	QTY	PART DESCRIPTION	P/N AVAILABLE SEPARATELY
1	1	Weld-Bracket, Number, Plate, RH Weld-Bracket, Number, Plate, High Exhaust, RH	n/a n/a
2	1	Weld-Bracket, Number, Plate, LH	n/a
3	2	Grommet-Side Cover	5433833
4	1	Number Plate, RH	5456022
5	1	Number Plate, LH	5456023
6	1	Decal-Set, Number, Plate, Side	7191113
7	2	Screw, Socket Head, M6 x 1.0 x 20	7517305
8	2	Screw-Socket Head, M8 x 1.25 x 20	7517410

REF	QTY	PART DESCRIPTION	P/N AVAILABLE SEPARATELY
9	4	Screw, Hex Button Head, M6 x 1.0 x 10, Shield	7519203
10	2	Nut, Hex Flange, M6 x 1.0, Nylon Locking	7547453
11	2	Nut, Hex Flange, M8 x 1.25, Nylon Locking	7547508
	1	Instructions	9929570

## TOOLS REQUIRED

- Safety Glasses
- Hex Key Set, Metric
- Socket Set, Hex Bit, Metric
- Socket Set, Metric
- Torque Wrench
- Wrench Set, Metric

## CONSUMABLES REQUIRED

- Isopropyl Alcohol (IPA)
- Gloves, Chemical Resistant

## IMPORTANT

Your accessory kit is exclusively designed for your vehicle. Please read the installation instructions thoroughly before beginning. Installation is easier if the vehicle is clean and free of debris. For your safety, and to ensure a satisfactory installation, perform all installation steps correctly in the sequence shown.

## INSTALLATION INSTRUCTIONS

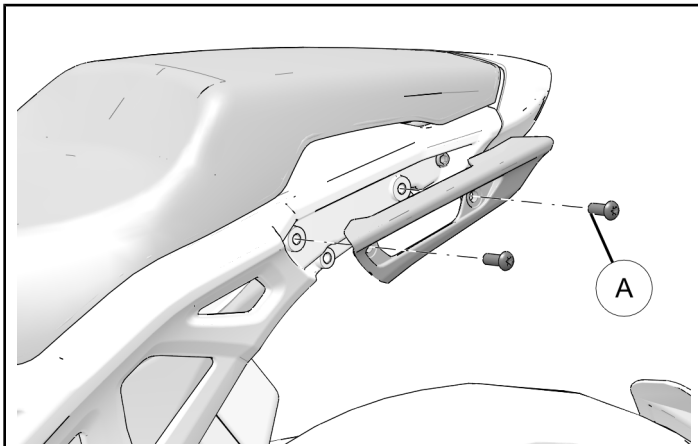
### VEHICLE PREPARATION

#### GENERAL

1. Turn key or ignition switch to OFF position and remove key.
2. Ensure motorcycle is parked on a flat surface, kickstand is fully extended, and vehicle is stable prior to installation.

#### PASSENGER HANDLE REMOVAL

1. Remove two screws (A) to remove passenger handle from motorcycle frame.



2. Repeat this section for opposite side.

### ACCESSORY INSTALLATION

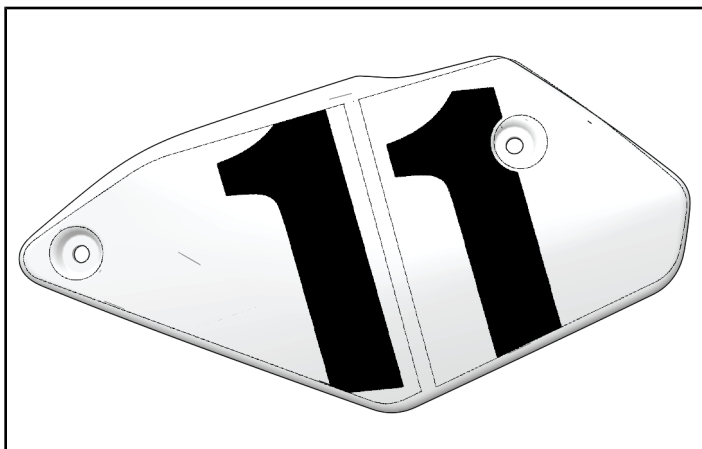
#### DECAL APPLICATION

1. Clean application surface with isopropyl alcohol and wait for surface to completely dry before applying decals.

#### **⚠ WARNING**

Isopropyl alcohol is hazardous to your health. See isopropyl alcohol packaging for proper handling instructions, including recommended personal protective equipment such as goggles and chemical resistant gloves.

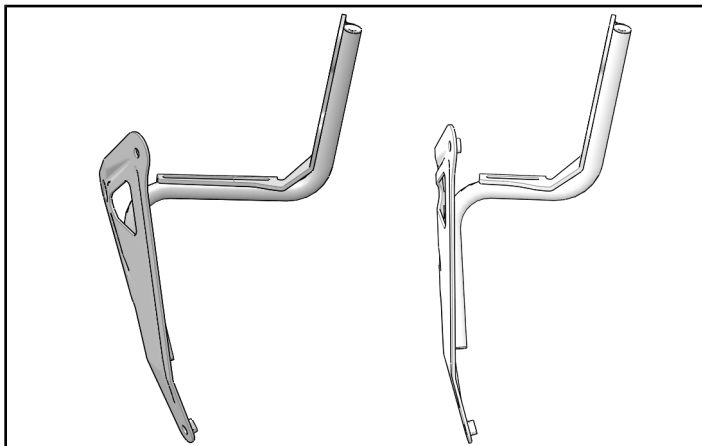
- Align decal with mounting holes and apply each decal ⑥ to corresponding side number plate.



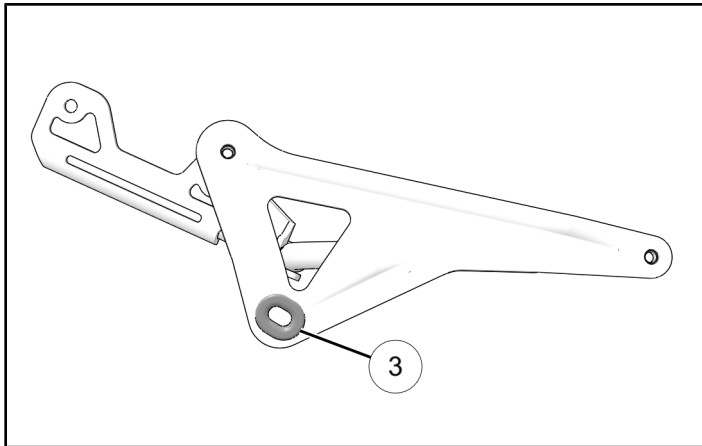
### **RIGHT-HAND SIDE NUMBER PLATE**

#### **ASSEMBLY**

- Select appropriate weld bracket. Select extended bracket if motorcycle is equipped with *High Mount Slip-On Exhaust Kit* P/N 2883519.



- Firmly push rubber grommet ③ into weld bracket.



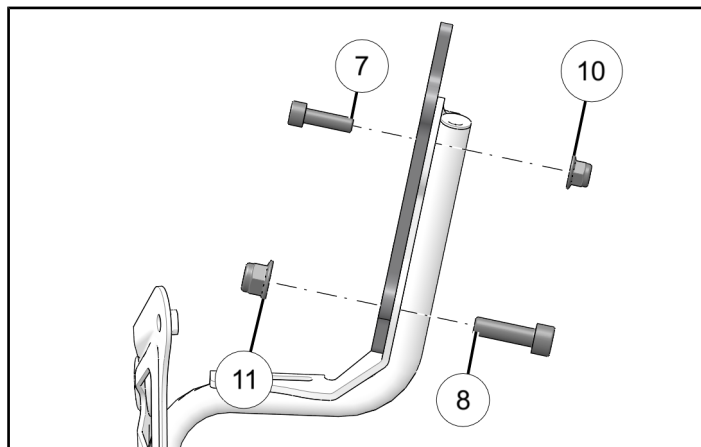
- Install accessory mount to weld bracket with fasteners ⑦⑧ and nuts ⑩⑪.

#### **TORQUE**

Accessory Mount Fastener ⑦ (Rear):  
**96 in-lbs (11 N·m)**

#### **TORQUE**

Accessory Mount Fastener ⑧ (Front):  
**19 ft-lbs (26 N·m)**

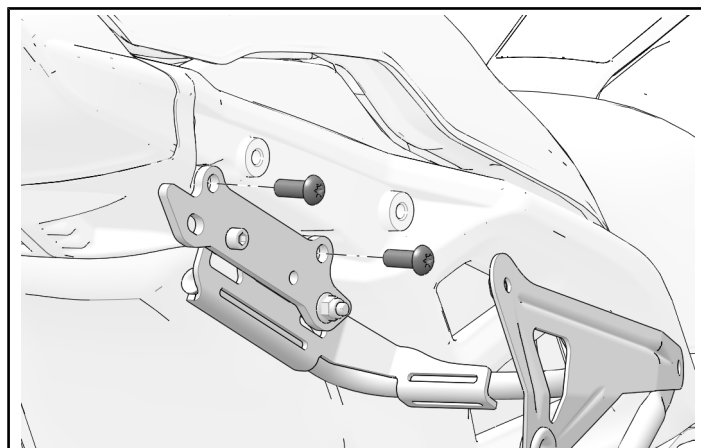


#### **STANDARD CONFIGURATION INSTALLATION**

- Install accessory mount to sub-frame with two accessory mount fasteners, included in *Accessory Mounting Kit* P/N 2883842

#### **TORQUE**

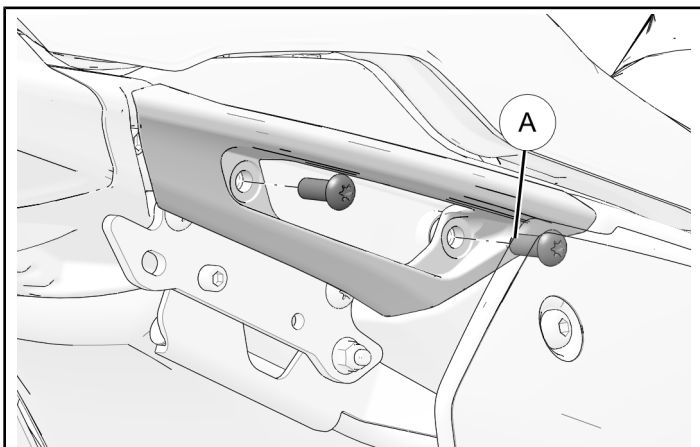
Accessory Mount Fasteners:  
**19 ft-lbs (26 N·m)**



2. Install passenger handle with two retained handle fasteners (A).

#### **TORQUE**

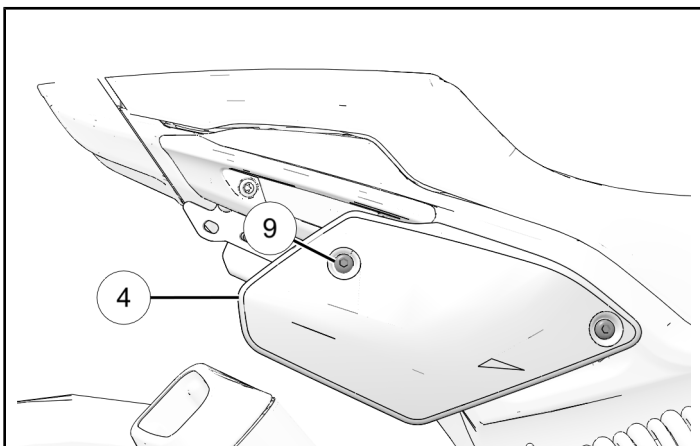
Handle Fasteners (A):  
**19 ft-lbs (26 N·m)**



3. Install right hand number plate (4) onto weld bracket at grommet location and install at top mounting location with two number plate fasteners (9).

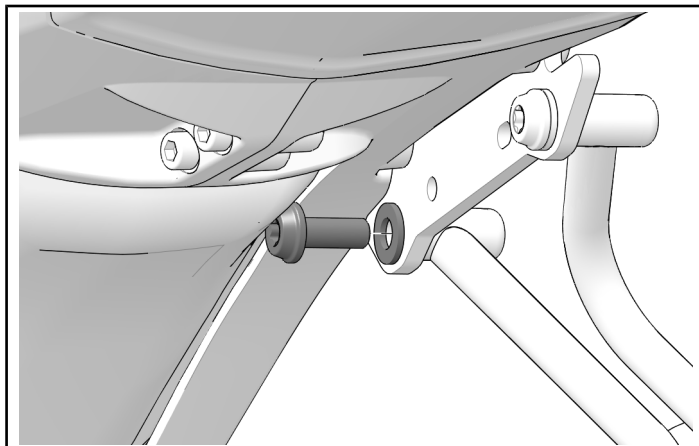
#### **TORQUE**

Number Plate Fasteners (9):  
**96 in-lbs (11 N·m)**



### **HIGH-MOUNT EXHAUST CONFIGURATION INSTALLATION**

1. Remove and discard front fastener and washer.



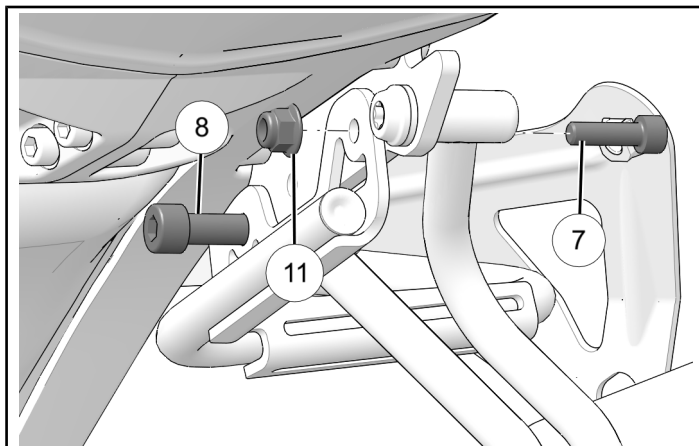
2. Install right-hand number plate with one front fastener (8) and one rear fastener (7) and nut (11).

#### **TORQUE**

Accessory Mount Fastener (7) (Rear):  
**96 in-lbs (11 N·m)**

#### **TORQUE**

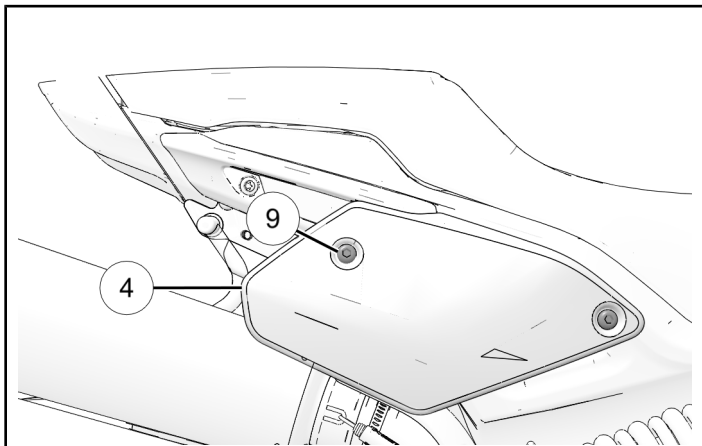
Accessory Mount Fastener (8) (Front):  
**19 ft-lbs (26 N·m)**



3. Install right hand number plate ④ onto weld bracket at grommet location and install at top mounting location with two number plate fasteners ⑨.

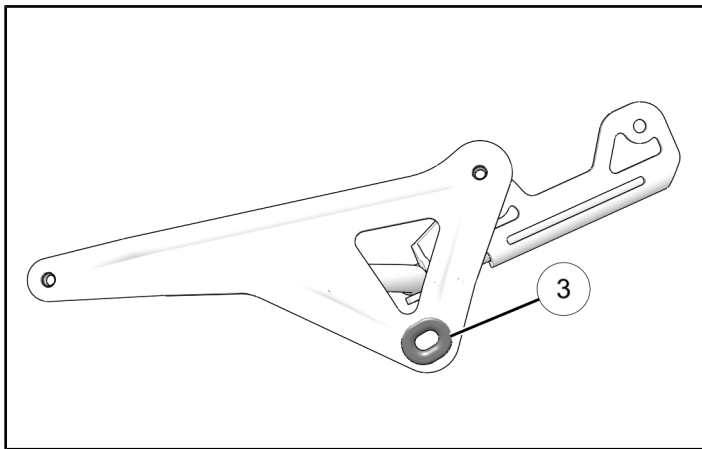
#### TORQUE

Number Plate Fasteners ⑨:  
**96 in-lbs (11 N·m)**



#### LEFT-HAND SIDE NUMBER PLATE

1. Firmly push rubber grommet ③ into weld bracket.



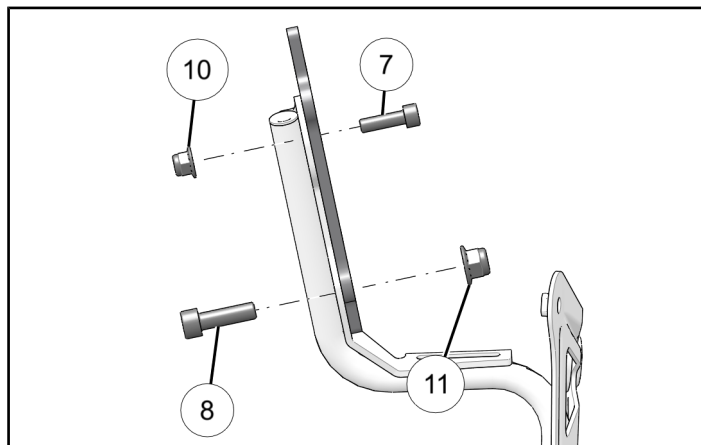
2. Install accessory mount to weld bracket with fasteners ⑦⑧ and nuts ⑩⑪.

#### TORQUE

Accessory Mount Fastener ⑦ (Rear):  
**96 in-lbs (11 N·m)**

#### TORQUE

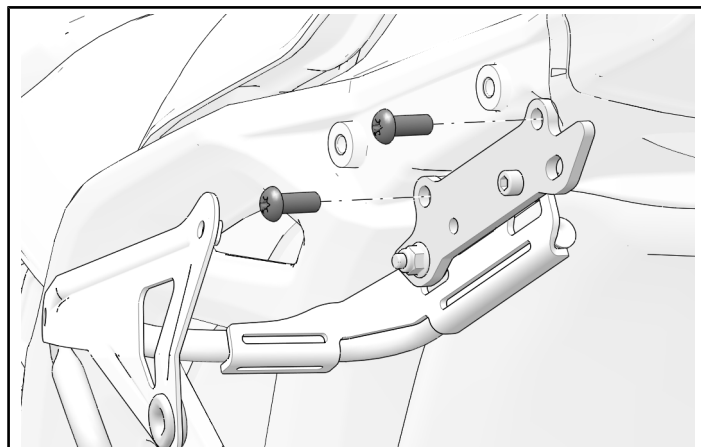
Accessory Mount Fastener ⑧ (Front):  
**19 ft-lbs (26 N·m)**



3. Install accessory mount to sub-frame with two accessory mount fasteners, included in *Accessory Mounting Kit P/N 2883842*

#### TORQUE

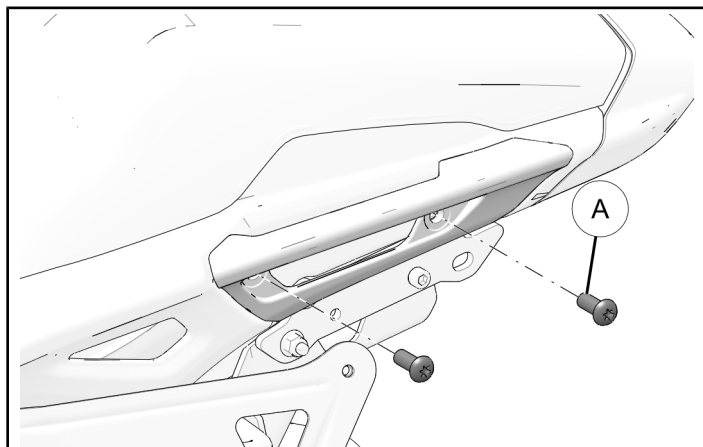
Accessory Mount Fasteners:  
**19 ft-lbs (26 N·m)**



4. Install passenger handle with two retained handle fasteners ①.

#### TORQUE

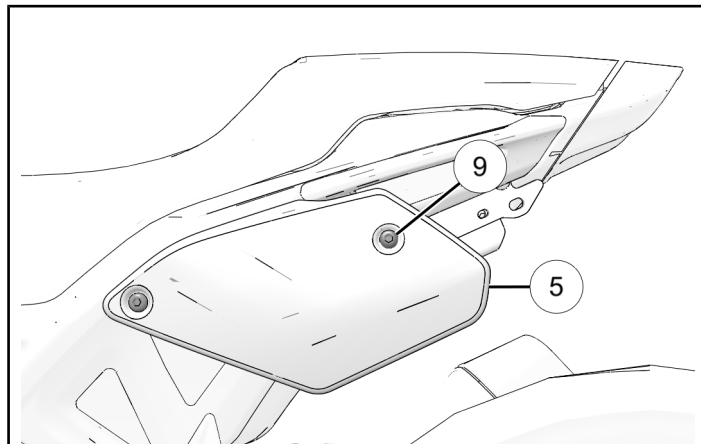
Handle Fasteners ①:  
**19 ft-lbs (26 N·m)**



5. Install left hand number plate ⑤ onto weld bracket at grommet location and install at top mounting location with two number plate fasteners ⑨.

#### TORQUE

Number Plate Fasteners ⑨:  
**96 in-lbs (11 N·m)**



## FEEDBACK FORM

A feedback form has been created for the installer to provide any comments, questions or concerns about the installation instructions. The form is viewable on mobile devices by scanning the QR code or by clicking [HERE](#) if viewing on a PC.

