

LOW MOUNT SLIP-ON EXHAUST KIT BY AKRAPOVIC



P/N 2883520; 2885006

BEFORE YOU BEGIN

Read these instructions and check to be sure all parts and tools are accounted for. Please retain these installation instructions for future reference and parts ordering information.

NOTICE

Factory approved and certified accessories and calibrations are designed for maximum performance, while protecting the engine over a wide range of operating conditions. Use of aftermarket or unapproved accessories or calibrations will cause abnormal sensor or engine operation, error codes and risks damage to the engine. The Indian Motorcycle® Limited Warranty *excludes* damages or failures resulting from use of aftermarket or unapproved components, accessories, and calibrations.

UNITED STATES REGULATORY NOTIFICATION:



This kit meets EPA and CARB emission limits. Tampering with emission related parts can lead to substantial regulatory penalties.

EUROPEAN UNION REGULATORY NOTIFICATION:



EC / ECE approval certification can be found on the product details page of your country's Indian Motorcycle® website.

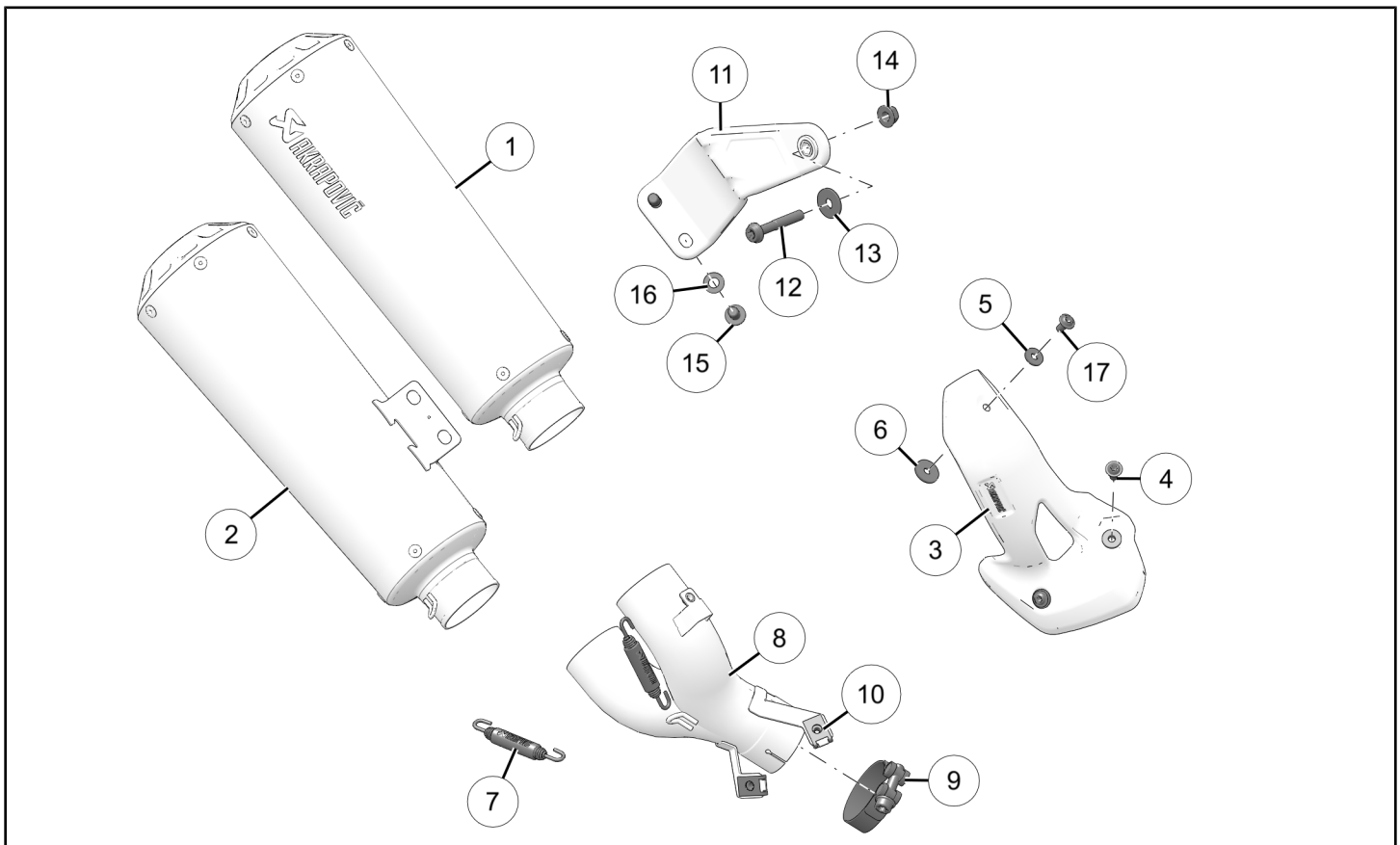
IMPORTANT

Due to the technical nature of this kit, Indian Motorcycle® insists this installation be performed by a certified Indian Motorcycle® Technician.

APPLICATION

Verify accessory fitment at www.indianmotorcycle.com.

KIT CONTENTS



REF	QTY	PART DESCRIPTION	P/N AVAILABLE SEPARATELY	AVAILABLE SERVICE KIT
1	1	Muffler–Upper, Akrapovič Muffler–Upper, Akrapovič, EU5	1263395-XXX 1263583-XXX	n/a n/a
2	1	Muffler–Lower, Akrapovič Muffler–Lower, Akrapovič, EU5	1263396-XXX 1263582-XXX	n/a n/a
3	1	Heat Shield–Lower, Akrapovič	n/a	2208036
4	2	Screw–Button Head, Torx®, M6 x 16mm	n/a	2208036
5	3	Washer, M6 15 x 2	n/a	2208036
6	3	Spacer, M6 20 x 2	n/a	2208036
7	2	Spring–Fixation, Akrapovič	n/a	2208037
8	1	Tube–Exhaust Pipe, Low Mount	1263398	n/a
9	1	Clamp–Exhaust Pipe	7082546	2208037
10	2	Nut–Clip, M6	n/a	2208036
11	1	Bracket–Mounting, Upper, Akrapovič	1263536	n/a
12	1	Screw–Button Head Flange, Torx®, M8 x 50mm	n/a	2208037
13	1	Washer–M8 24 x 2mm	n/a	2208037
14	1	Nut–M8	n/a	2208037
15	2	Screw–Button Head, Torx®, M8 x 16mm	n/a	2208037

REF	QTY	PART DESCRIPTION	P/N AVAILABLE SEPARATELY	AVAILABLE SERVICE KIT
16	2	Washer, M8 16 x 1.6	n/a	2208037
17	1	Screw-Button Head, Torx®, M6 x 12mm	n/a	2208036

TOOLS REQUIRED

- Safety Glasses
- Pliers, Locking
- Screwdriver Set, Torx®
- Socket Set, Metric
- Socket Set, Torx® Bit
- Torque Wrench

IMPORTANT

Your accessory kit is exclusively designed for your vehicle. Please read the installation instructions thoroughly before beginning. Installation is easier if the vehicle is clean and free of debris. For your safety, and to ensure a satisfactory installation, perform all installation steps correctly in the sequence shown.

INSTALLATION INSTRUCTIONS

VEHICLE PREPARATION

GENERAL

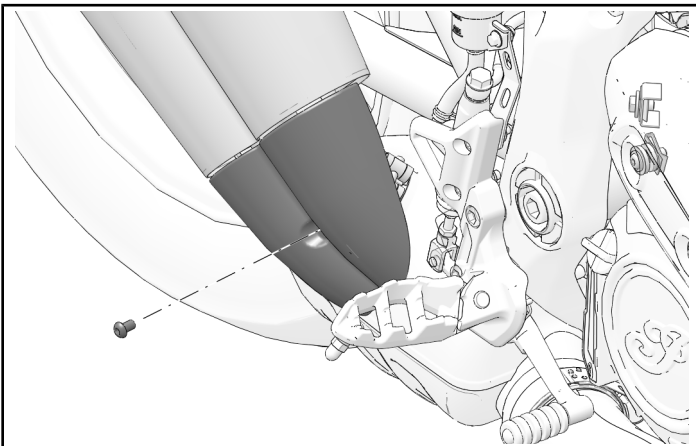
1. Turn key or ignition switch to OFF position and remove key.
2. Ensure motorcycle is parked on a flat surface, kickstand is fully extended, and vehicle is stable prior to installation.

MUFFLER REMOVAL

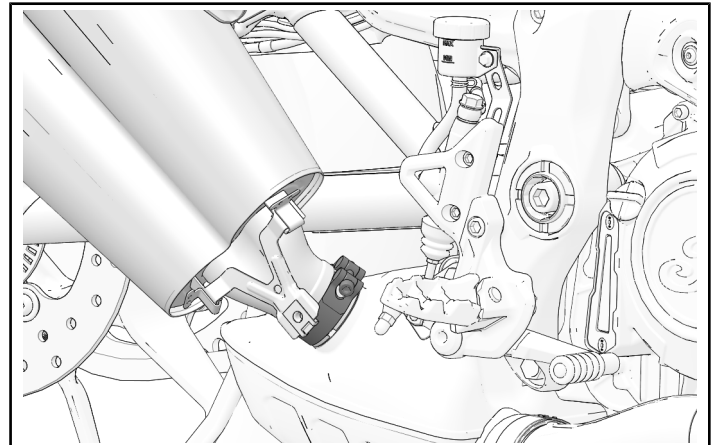
⚠ WARNING

Engine and exhaust components get hot and remain hot for a period of time after the engine is stopped. Wear insulated protective clothing or wait for components to cool sufficiently before working on the machine.

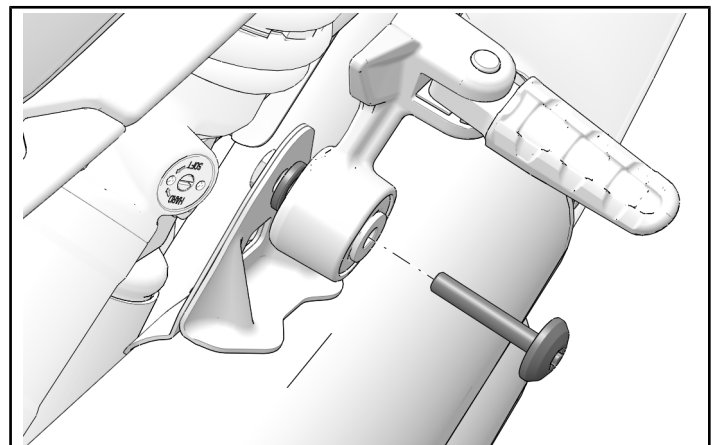
1. Remove muffler heat shield fastener and muffler heat shield.



2. Loosen exhaust clamp retaining muffler to exhaust resonator.



3. Remove muffler isolator fastener. Retain loose spacer (if applicable) between muffler assembly and passenger foot peg mount.



4. Remove muffler from resonator.

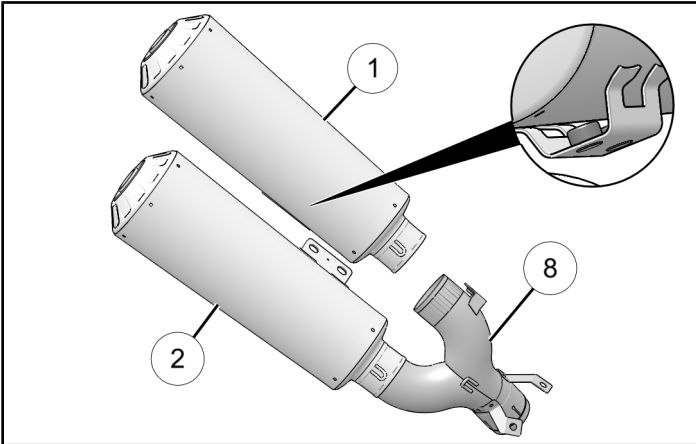
ACCESSORY INSTALLATION

EXHAUST ASSEMBLY

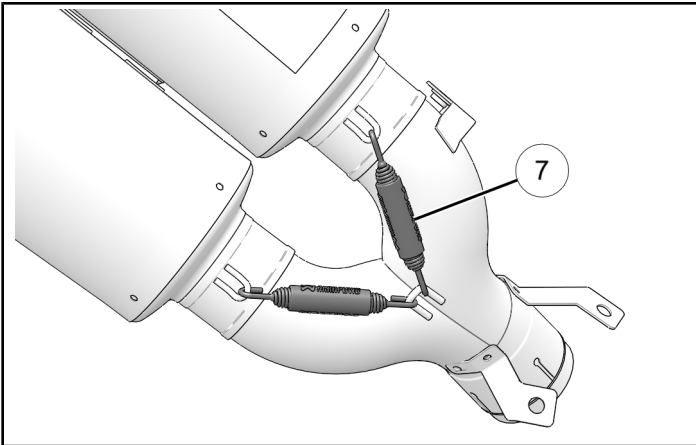
1. Slide upper muffler ① and lower muffler ② onto exhaust pipe ⑧.

NOTICE

Upper muffler ① can be identified by weld nuts on rear-side bracket.

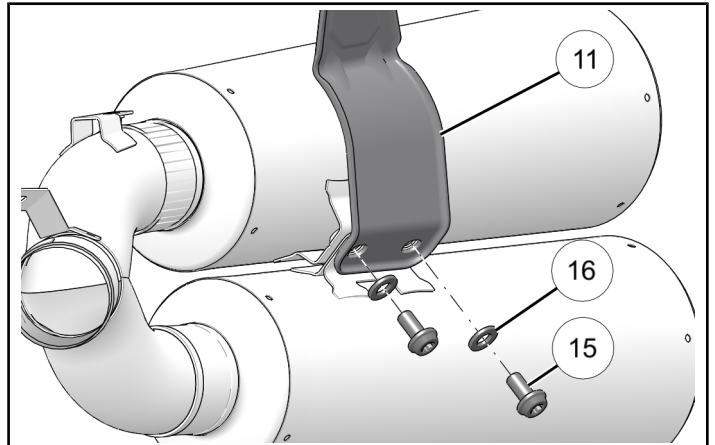


2. Secure mufflers to exhaust pipe with two springs ⑦.



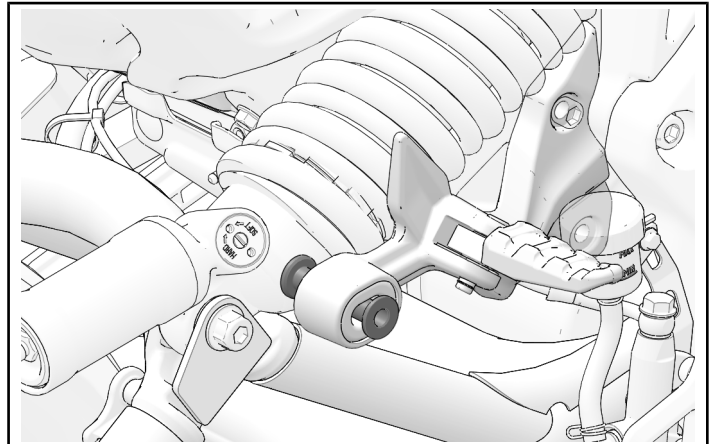
3. Install exhaust mount ⑪ to mufflers with two exhaust mount screws ⑮ and two washers ⑯, as shown.

Do not torque exhaust mount screws ⑮ at this time.



EXHAUST INSTALLATION

1. Ensure two bushings, used for stock muffler, are installed on passenger foot peg.

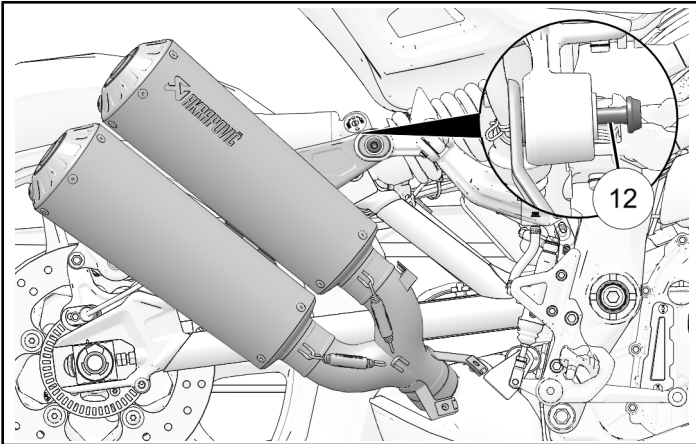


2. Slide exhaust pipe clamp ⑨ onto base of exhaust pipe and place exhaust pipe onto exhaust resonator.

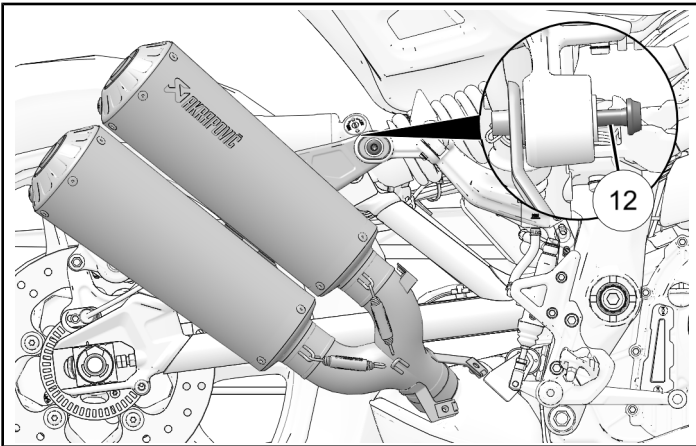
NOTICE

Fastener ⑫ is a temporary placeholder while exhaust assembly is clamped secure to exhaust resonator.

- Exhaust mount with loose spacer:
Align exhaust assembly behind passenger foot peg and pass isolator fastener ⑫ through foot peg mount and exhaust mount.



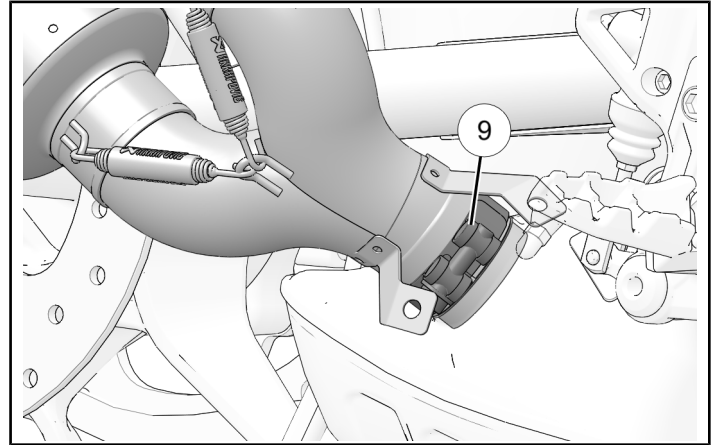
- Exhaust mount with integrated spacer:
Align exhaust assembly behind passenger foot peg and pass isolator fastener ⑫ through foot peg mount and loosely thread fastener into integrated spacer.



3. Tighten clamp ⑨ around base of exhaust pipe.

TORQUE

Exhaust Clamp (Muffler to Resonator) ⑨:
10 ft-lbs (14 N·m)



4. Install exhaust mount to passenger foot peg.

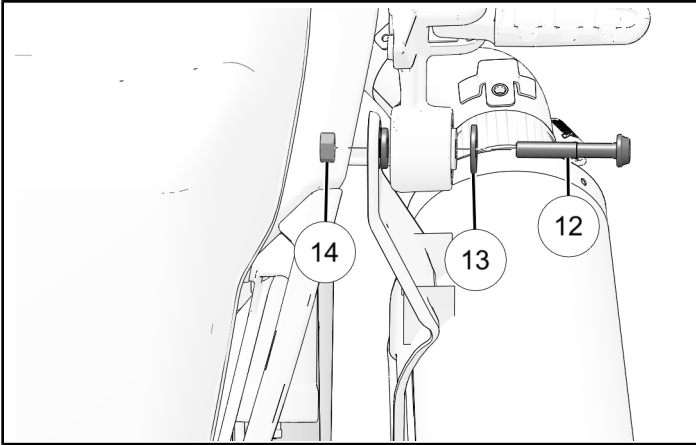
- Exhaust mount with loose spacer:
Remove muffler isolator fastener ⑫ previously used in this section. Reinstall with one washer ⑬, one retained spacer, and one nut ⑭.

IMPORTANT

If spacer was not available or retained during disassembly, contact your authorized Indian Motorcycle® dealer for required spacer (P/N 7520984).

TORQUE

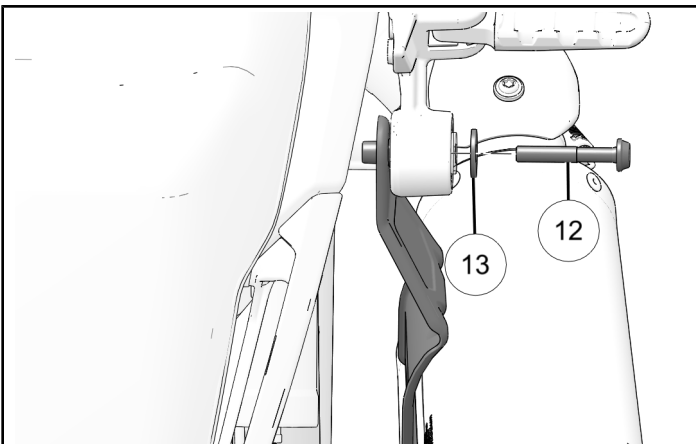
Muffler Isolator Fastener ⑫:
16 ft-lbs (22 N·m)



- Exhaust mount with integrated spacer:
Remove muffler isolator fastener ⑫ previously used in this section. Reinstall with one washer ⑬, one retained spacer (if applicable), and integrated spacer.

TORQUE

Muffler Isolator Fastener ⑫:
16 ft-lbs (22 N·m)

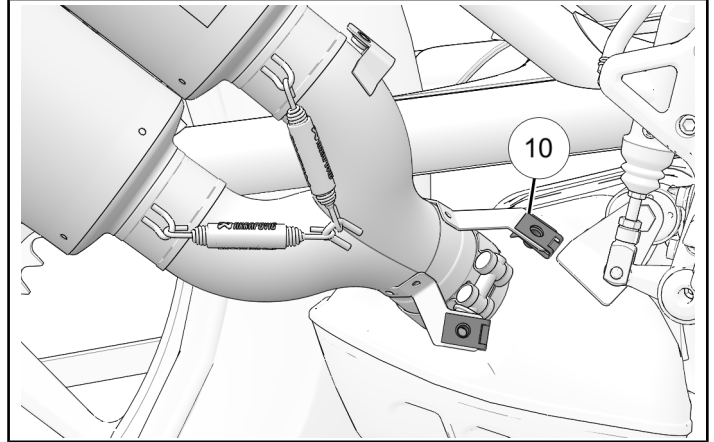


5. Torque exhaust mount fasteners ⑮, installed in step 3 of *Exhaust Assembly* section.

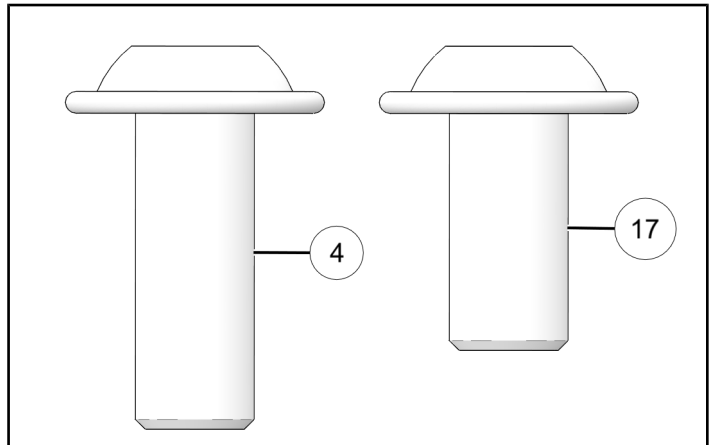
TORQUE

Exhaust Mount Fasteners ⑮:
19 ft-lbs (26 N·m)

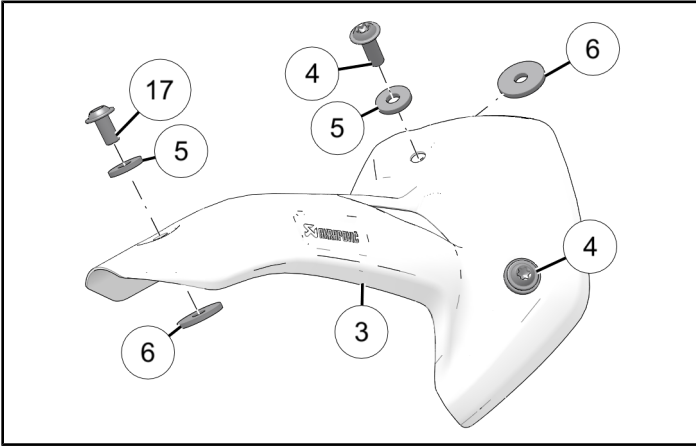
6. Slide two clip-nuts ⑩ onto heat shield mounts.



7. Ensure two heat shield fasteners ④ (long) are used at lower mounting location. Using fasteners ④ (long) instead of fastener ⑰ (short) at upper mounting location may result in fasteners being driven into exhaust pipe.



8. Pass heat shield fasteners ④ and ⑰ through three washers ⑤, heat shield ③, and three spacers ⑥.



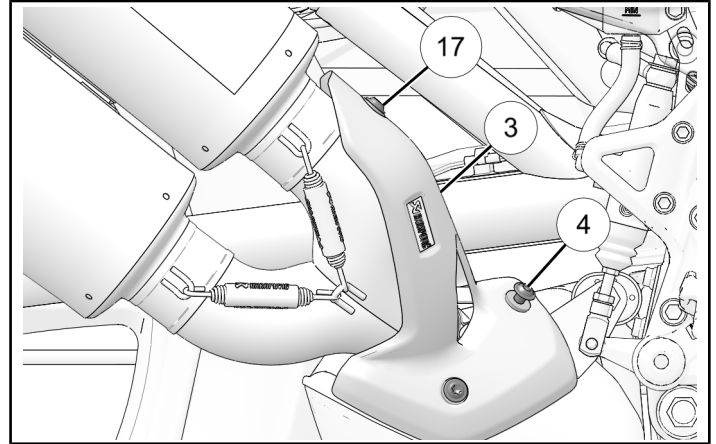
9. Install heat shield ③ onto exhaust pipe. Ensure spacers are aligned with clip-nuts underneath heat shield.

TORQUE

Heat Shield Fastener ⑰:
7 ft-lbs (10 N·m)

TORQUE

Heat Shield Fasteners ④:
7 ft-lbs (10 N·m)



FEEDBACK FORM

A feedback form has been created for the installer to provide any comments, questions or concerns about the installation instructions. The form is viewable on mobile devices by scanning the QR code or by clicking [HERE](#) if viewing on a PC.

