

FRONT FENDER KIT



P/N 2883772-XXXX

APPLICATION

Verify accessory fitment at www.indianmotorcycle.com.

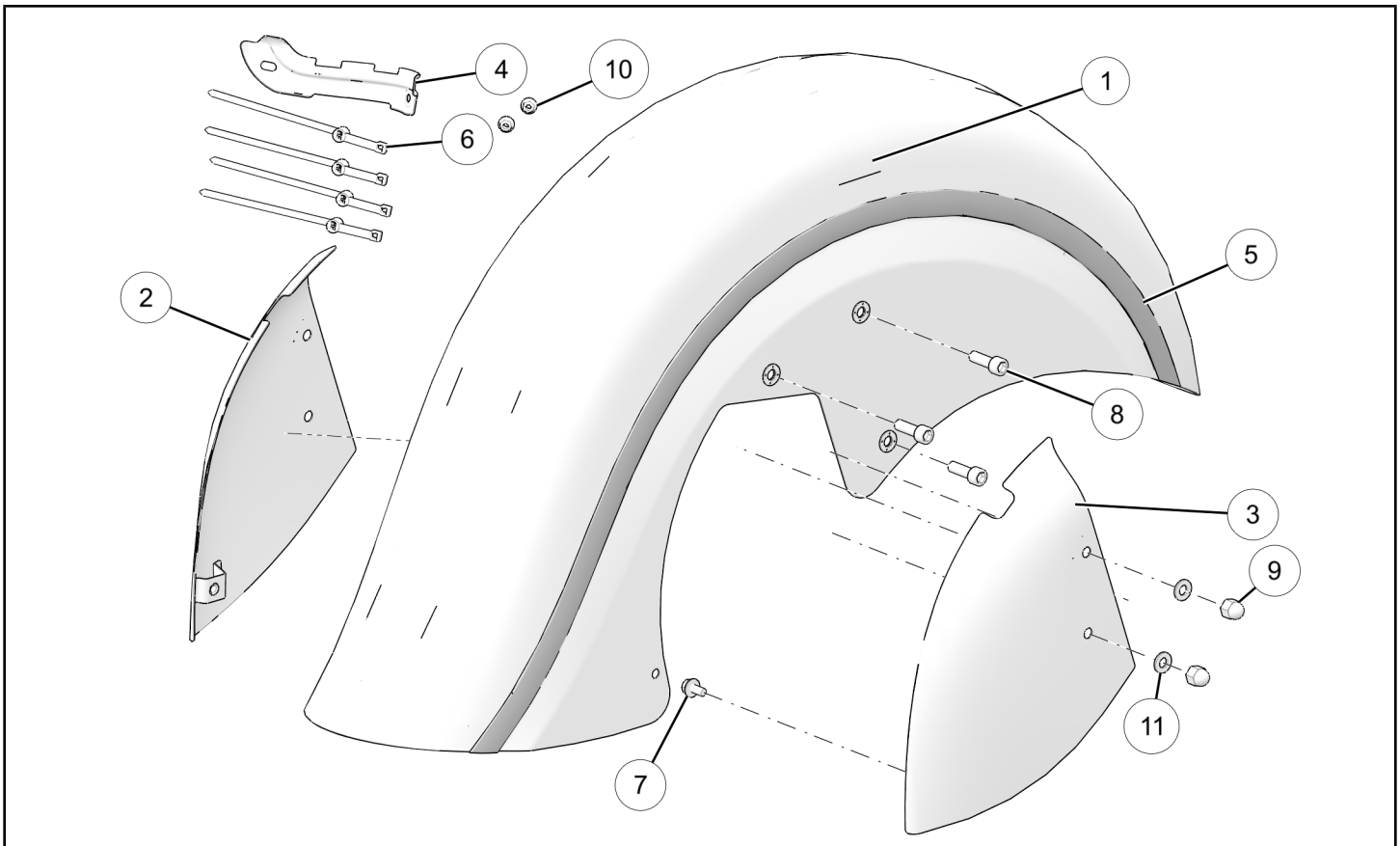
BEFORE YOU BEGIN

Read these instructions and check to be sure all parts and tools are accounted for. Please retain these installation instructions for future reference and parts ordering information.

KIT CONTENTS

This kit contains parts for installation of the Front Fender only. Prior installation of the Headdress Kit, PN 2880665-XXX, is also required (sold separately).

This Kit includes:



NOTE

XXXX = Indian® color code (For example: 1728 = Black Hills Silver)

REF	QTY	PART DESCRIPTION	PART NUMBER
1	1	Assembly, Front Fender	1019176-XXXX
2	1	Caliper Cover, LH	1019539-XXX
3	1	Caliper Cover, RH	1019540-XXX
4	1	Bracket, Harness, Front Fender, International	5263068
5	2	Trim, Front Fender, (Pre-Installed)	5450761

REF	QTY	PART DESCRIPTION	PART NUMBER
6	4	Cable tie, Stud Mount, M5, 146MM	7081909
7	2	Screw, Hex Flange Head, M6 X 1.0 X 12	7517704
8	6	Screw, Socket Head, M8 X 1.25 X 25	7519859
9	4	Nut, Acorn, M8	7547184
10	2	Nut, Hex Flange, M5 X 0.8, Nylon Locking	7547427
11	4	Washer, 8.4 X 16 X 1.6	7556245
	1	Instructions	9929068

TOOLS REQUIRED

- Safety Glasses
- Socket Set, Hex Bit, Metric
- Socket Set, Metric
- Torque Wrench
- Wrench Set, Metric

IMPORTANT

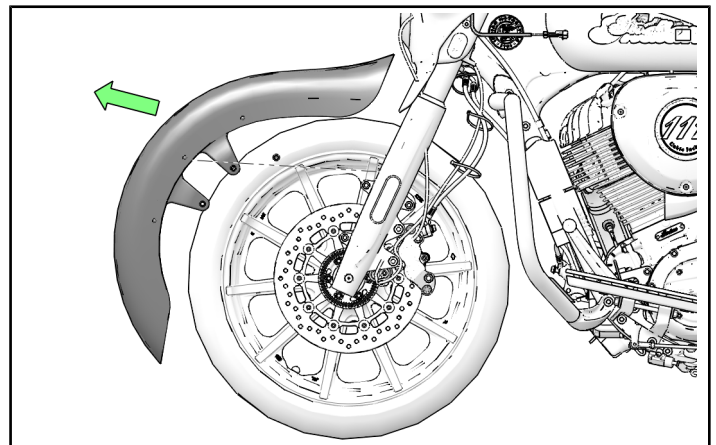
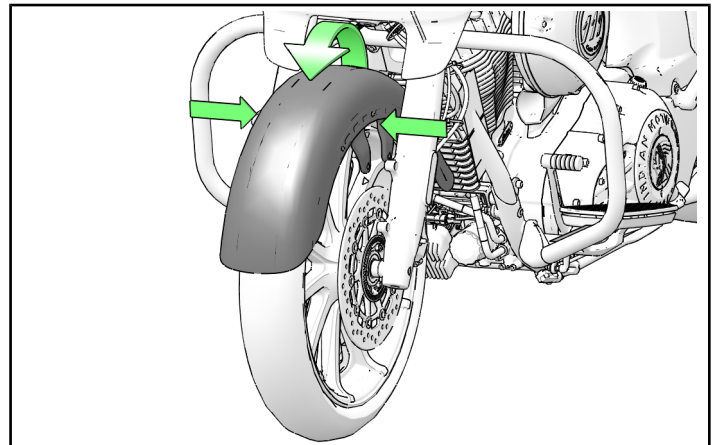
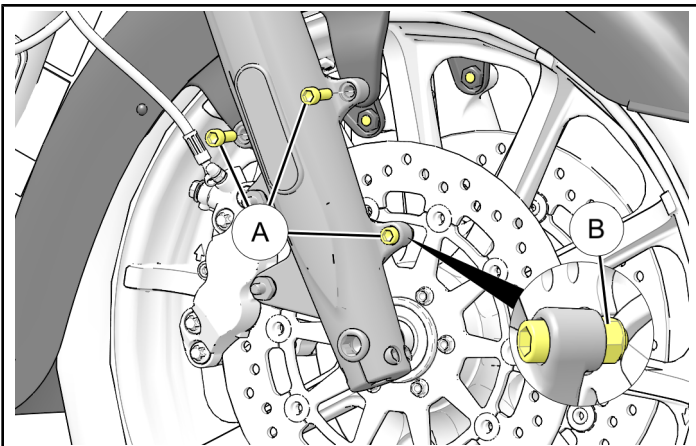
Your Indian Front Fender Kit is exclusively designed for your vehicle. Please read the installation instructions thoroughly before beginning. Installation is easier if the vehicle is clean and free of debris. For your safety, and to ensure a satisfactory installation, perform all installation steps correctly in the sequence shown.

INSTALLATION INSTRUCTIONS

1. Turn key or ignition switch to “OFF” position and remove key. If equipped with keyless fob, remove fob from proximity of vehicle.
2. Ensure motorcycle is parked on a flat surface, kickstand is fully extended, and vehicle is stable prior to installation.
2. Stand in front of motorcycle facing front fender and squeeze sides together while “rolling” fender out from fork legs.

FENDER REMOVAL

1. Remove and discard three screws (A) and one nut (B) from each side of front fork.

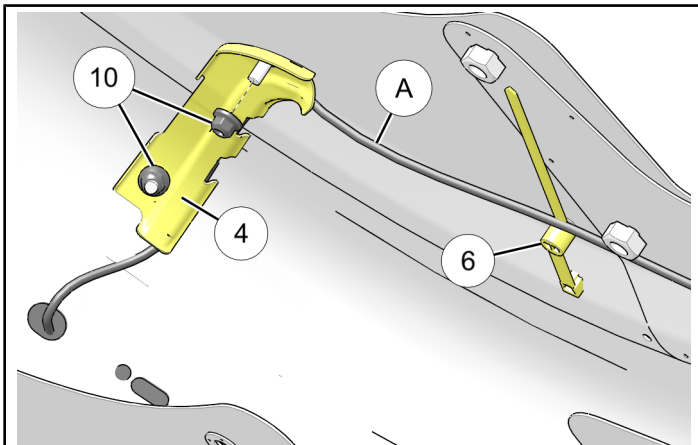


HEADRESS WIRE ROUTING INSIDE FENDER

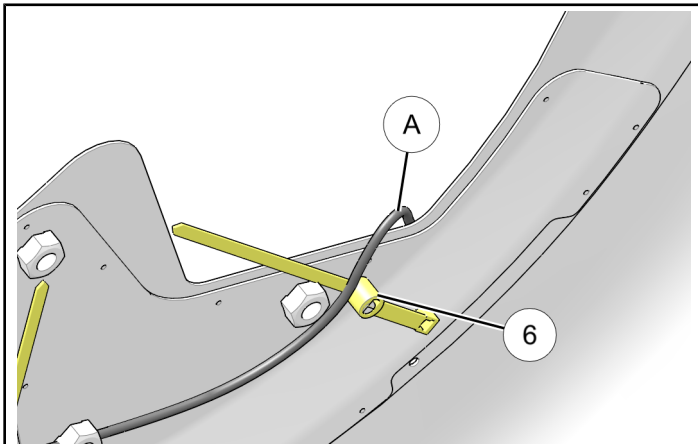
1. Install stud mount cable tie ⑥ to stud as shown. Install bracket ④ with two nuts ⑩, routing headdress harness wire ① under bracket and toward stud mounted cable tie. Fasten cable tie ⑥ around wire ①. Torque two nuts ⑩ to specification.

TORQUE

18 ft. lbs. (24 Nm)

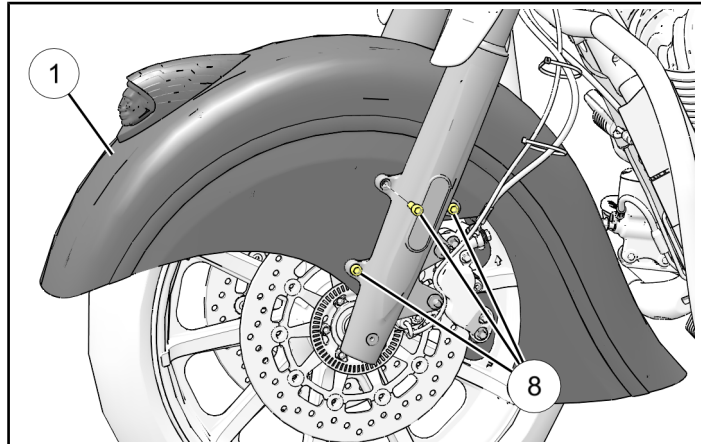


2. Continue to route wire ① along fender and secure with second stud mounted cable tie ⑥ and out of fender close to where the brake wiring and hoses will route.



FENDER INSTALLATION

1. Ensure Headdress kit (PN 2880665-XXX) is properly installed and fasteners are torqued to fender.
2. Roll new fender ① in place and align mounting holes. Loosely install fender with six new fasteners ⑧. **Do not torque fasteners at this time.**



3. Align fender ① and torque six fasteners ⑧ to specification.

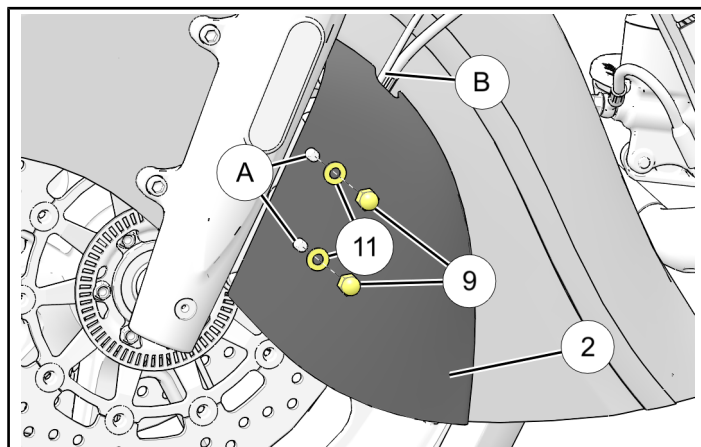
TORQUE

18 ft. lbs. (24 Nm)

4. Install LH Caliper Cover ② onto mounting studs ①. Loosely install two new washers ⑪ and two new acorn nuts ⑧. Ensure headdress and brake harness wiring, and brake hose ② are routed through opening in caliper cover. Torque acorn nuts to specification.

TORQUE

18 in. lbs. (2 Nm)



5. Repeat previous step for RH Caliper cover ③.
6. Ensure Headdress Kit (PN 2880665) installation is complete as per kit instructions.

FEEDBACK FORM

A feedback form has been created for the installer to provide any comments, questions or concerns about the installation instructions. The form is viewable on mobile devices by scanning the QR code or by clicking [HERE](#) if viewing on a PC.

FEEDBACK FORM

