

SHIFT/BRAKE PEG KIT



P/N 2882005-XXX

BEFORE YOU BEGIN

Read these instructions and check to be sure all parts and tools are accounted for. Please retain these installation instructions for future reference and parts ordering information.

APPLICATION

Verify accessory fitment at www.indianmotorcycle.com.

REQUIRED SOLD SEPARATELY

MODEL YEAR 2022 AND NEWER CHIEF® MODELS WITHOUT FACTORY INSTALLED MID OR FORWARD CONTROLS WITH PEGS

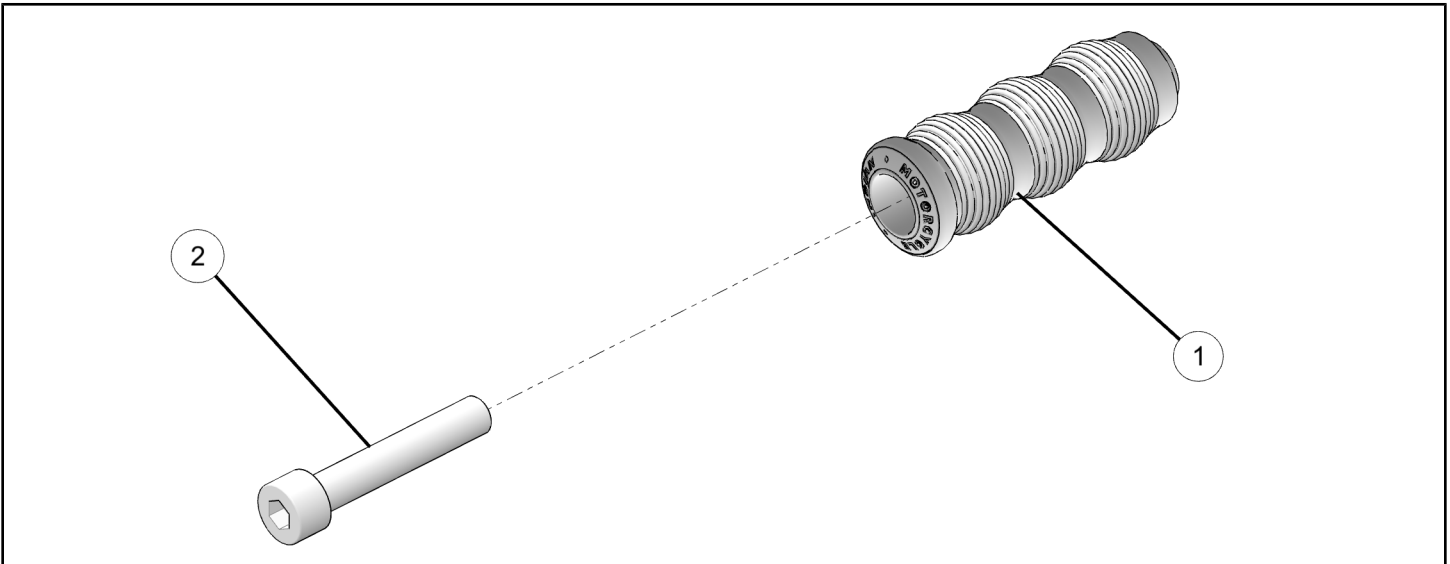
Only parts for installation of the Indian Motorcycle® Shift/Brake Peg Kit are included. Prior installation of the following additional kits are also required (sold separately):

- *Mid Foot Controls With Pegs*, P/N 2889214-XXX
- *Forward Foot Controls With Pegs*, P/N 2889215-XXX

NOTICE

XXX = Indian Motorcycles® color code (For example: 266 = Black)

KIT CONTENTS



REF	QTY	PART DESCRIPTION	P/N AVAILABLE SEPARATELY
1	2	Shift/Brake Peg	N/A
2	2	Socket Head Screw - M8 X 1.25 X 45	N/A

TOOLS REQUIRED

- Safety Glasses
- Torque Wrench
- Socket Set, Hex Bit, Metric
- Wrench Set, Metric

IMPORTANT

Your Indian Motorcycle® Shift/Brake Peg Kit is exclusively designed for your vehicle. Please read the installation instructions thoroughly before beginning. Installation is easier if the vehicle is clean and free of debris. For your safety, and to ensure a satisfactory installation, perform all installation steps correctly in the sequence shown.

INSTALLATION INSTRUCTIONS

VEHICLE PREPARATION

GENERAL

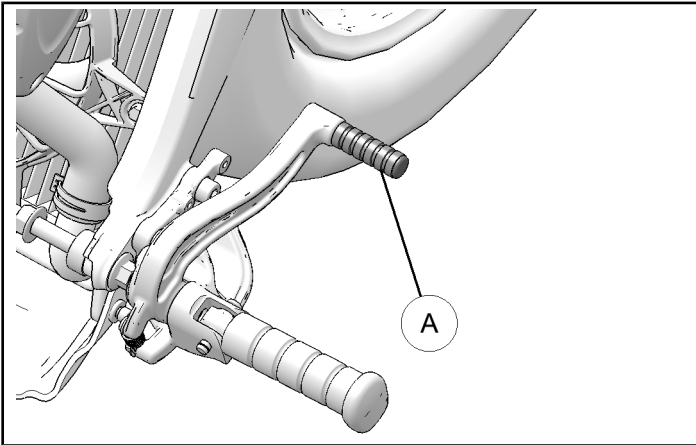
1. Park motorcycle on a flat surface, fully extend kickstand, and make sure vehicle is stable.
2. Turn key or ignition switch to OFF position and remove key. If equipped with keyless fob, remove fob from proximity of vehicle.

INSTALLATION INSTRUCTIONS

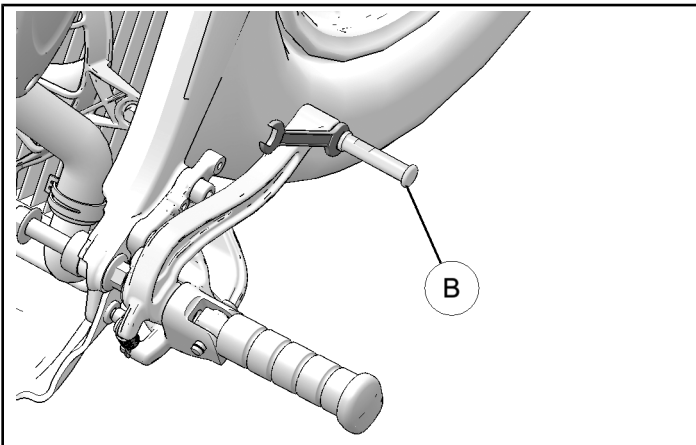
NOTICE

Brake peg shown, shift peg similar.

1. Remove the rubber **A** on the peg.



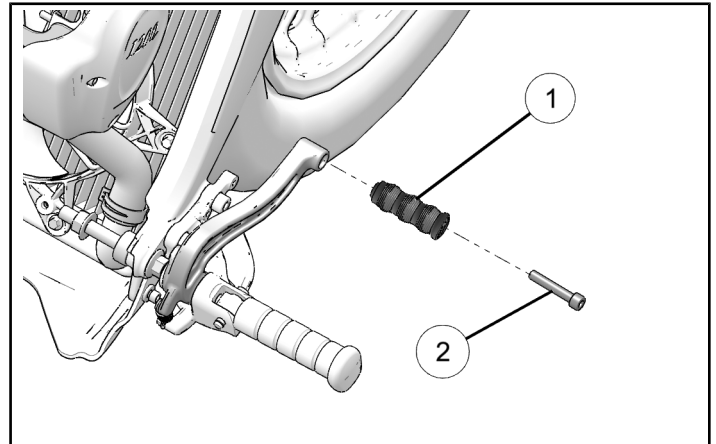
2. Remove peg **B** from the pedal.



3. Install the peg **1** with supplied screw **2**. Torque to specification.

TORQUE

Peg Screw **2**:
92 in-lbs (10.5 N·m)



INSTRUCTION FEEDBACK FORM

A feedback form has been created for the installer to provide any comments, questions or concerns about the installation instructions. The form is viewable on mobile devices by scanning the QR code or by clicking [HERE](#) if viewing on a PC.

