

PASSENGER FOOT PEG MOUNT FOR HIGH EXHAUST KIT



P/N 2884069

INTERNATIONAL INSTRUCTIONS

DE DEUTSCH

Laden Sie die neuesten PDF-Anweisungen von www.indianmotorcycle.de herunter.

FR FRANÇAIS

Télécharger les dernières instructions en format PDF sur www.indianmotorcycle.fr.

IT ITALIANO

Scarica l'ultima versione delle istruzioni in formato PDF da www.indianmoto.it.

EN ENGLISH

Download the latest PDF instructions from www.indianmotorcycle.com.

ES ESPAÑOL

Descargue las instrucciones más recientes en formato PDF de www.indianmotorcycle.mx / www.indianmotorcycle.es.

ZH 中文

从www.indianmotorcycle.cn
下载最新的PDF说明。

1



2



3



4



APPLICATION

Verify accessory fitment at www.indianmotorcycle.com.

BEFORE YOU BEGIN

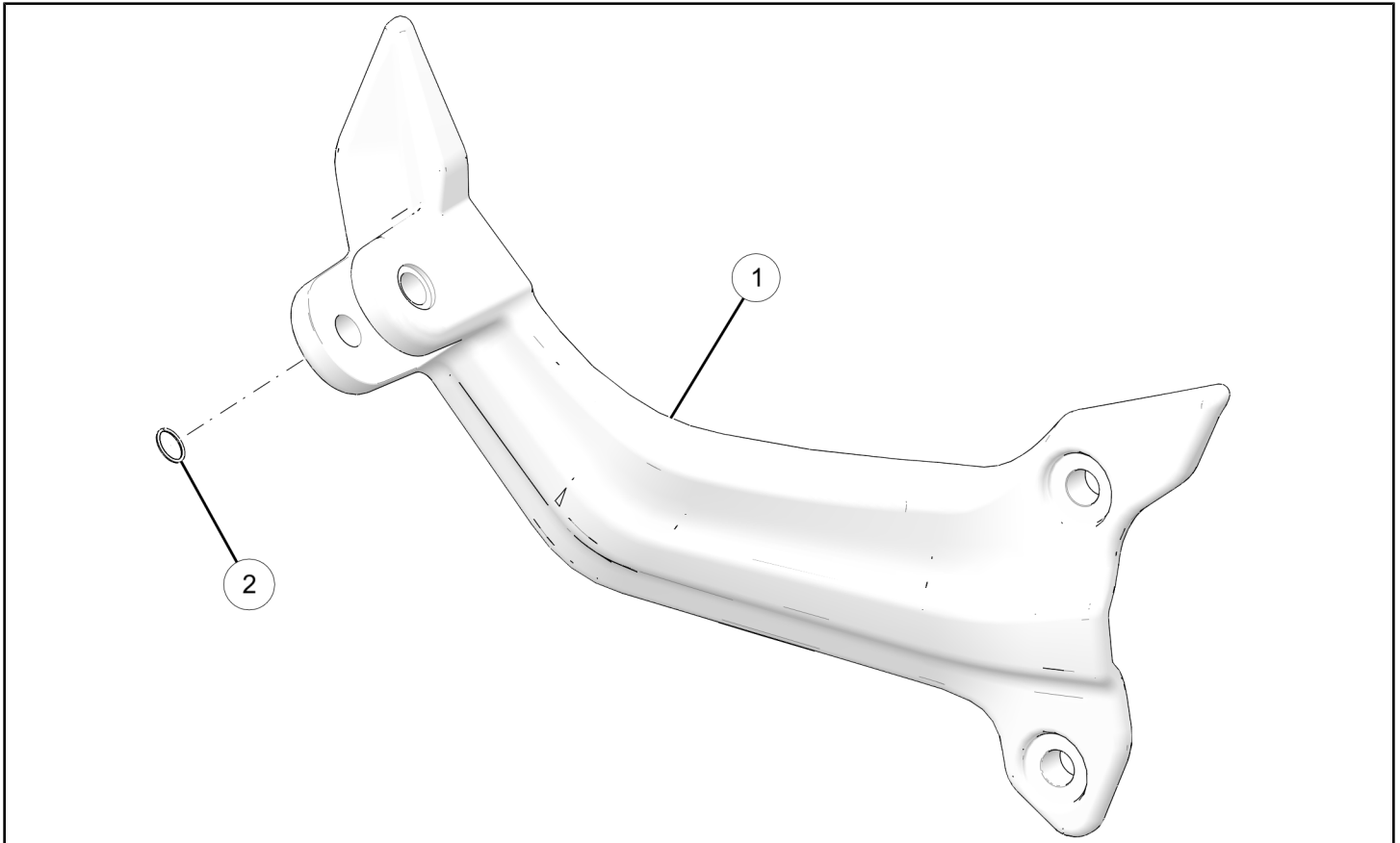
Read these instructions and check to be sure all parts and tools are accounted for. Please retain these installation instructions for future reference and parts ordering information.

REQUIRED SOLD SEPARATELY

Only parts for installation of the Indian Motorcycle® Passenger Foot Peg Mount for High Exhaust Kit are included. For complete installation, the following kit is also required (sold separately):

- *High Mount Slip-On Exhaust by Akrapovič Kit P/N 2883519*

KIT CONTENTS



REF	QTY	PART DESCRIPTION	P/N AVAILABLE SEPARATELY
1	1	Mount-Foot Peg, Passenger, RH	N/A
2	1	Ring-Retaining, Spiral	7710644
	1	Instructions	9929486

TOOLS REQUIRED

- Safety Glasses
- Hex Key Set, Metric
- Pliers, Retaining Ring
- Socket Set, Hex Bit, Metric
- Torque Wrench

IMPORTANT

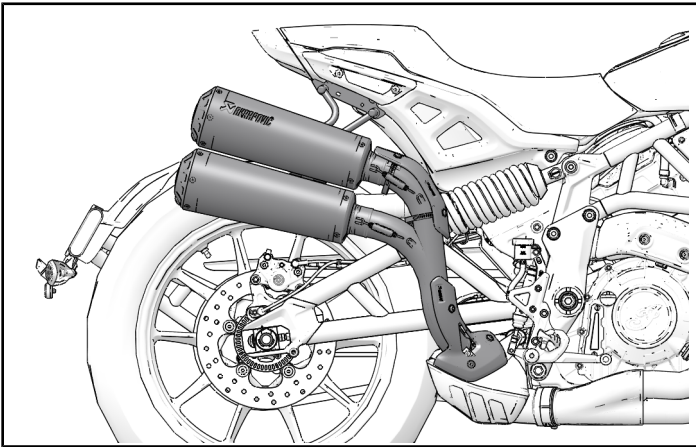
Your accessory kit is exclusively designed for your vehicle. Please read the installation instructions thoroughly before beginning. Installation is easier if the vehicle is clean and free of debris. For your safety, and to ensure a satisfactory installation, perform all installation steps correctly in the sequence shown.

INSTALLATION INSTRUCTIONS

VEHICLE PREPARATION

GENERAL

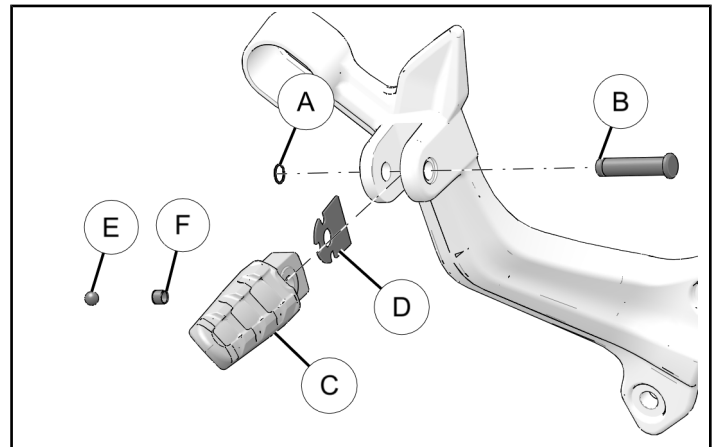
1. Turn key or ignition switch to OFF position and remove key.
2. Ensure motorcycle is parked on flat surface, kickstand is fully extended, and vehicle is stable prior to installation.
3. Install *High Mount Slip-On Exhaust by Akrapovič Kit* P/N 2883519 as per instructions.



ACCESSORY INSTALLATION

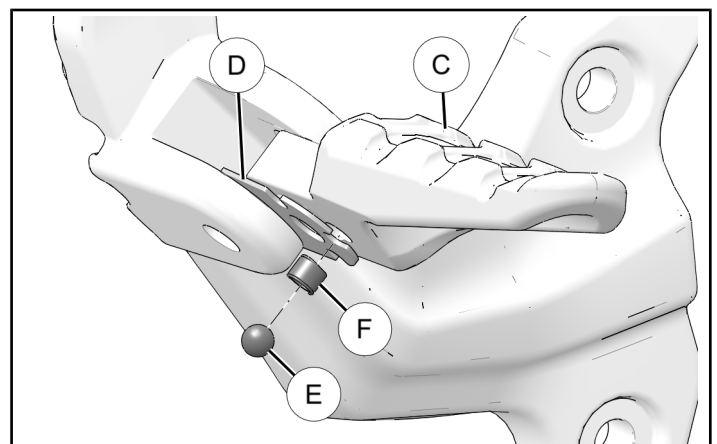
STOCK PASSENGER FOOT PEG DISASSEMBLY

1. Remove and discard retaining ring (A) from foot peg assembly. Retain the following for reinstallation:
 - Retaining pin (B)
 - Foot peg (C)
 - Peg detent (D)
 - Ball bearing (E)
 - Spring (F)

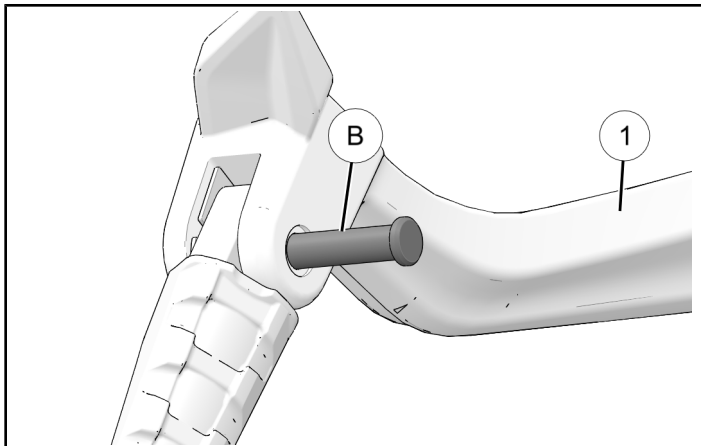


PASSENGER FOOT PEG ASSEMBLY & INSTALLATION

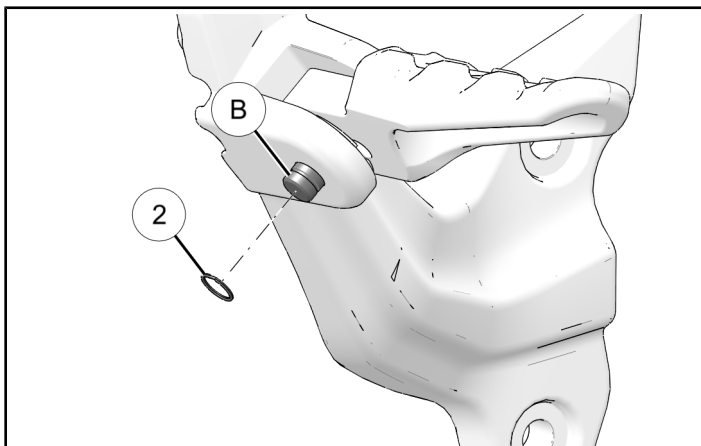
1. With foot peg upside down, insert ball bearing (E) and spring (F). Slide foot peg (C) and detent (D) into new foot peg mount.



2. Pass pin ⑧ through new foot peg mount ①. Ensure ball bearing in foot peg is between notch of peg detent during installation.



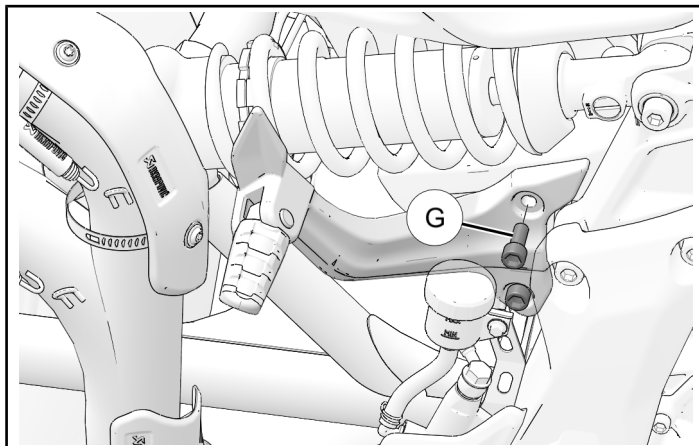
3. Place retaining ring ② into groove of pin ⑧ to secure foot peg assembly.



4. Align new passenger peg with stock mounting holes. Install with two retained foot peg fasteners ⑥.

TORQUE

Foot Peg Fasteners ⑥:
17 ft-lbs (26 N·m)



FEEDBACK FORM

A feedback form has been created for the installer to provide any comments, questions or concerns about the installation instructions. The form is viewable on mobile devices by scanning the QR code or by clicking [HERE](#) if viewing on a PC.

