

# GRAB HANDLE KIT



P/N 2883512

## INTERNATIONAL INSTRUCTIONS

### DE DEUTSCH

Laden Sie die neuesten PDF-Anweisungen von [www.indianmotorcycle.de](http://www.indianmotorcycle.de) herunter.

### FR FRANÇAIS

Télécharger les dernières instructions en format PDF sur [www.indianmotorcycle.fr](http://www.indianmotorcycle.fr).

### IT ITALIANO

Scarica l'ultima versione delle istruzioni in formato PDF da [www.indianmoto.it](http://www.indianmoto.it).

### EN ENGLISH

Download the latest PDF instructions from [www.indianmotorcycle.com](http://www.indianmotorcycle.com).

### ES ESPAÑOL

Descargue las instrucciones más recientes en formato PDF de [www.indianmotorcycle.mx](http://www.indianmotorcycle.mx) / [www.indianmotorcycle.es](http://www.indianmotorcycle.es).

### ZH 中文

从[www.indianmotorcycle.cn](http://www.indianmotorcycle.cn) 下载最新的PDF说明。

1



2



3



4



## APPLICATION

Verify accessory fitment at [www.indianmotorcycle.com](http://www.indianmotorcycle.com).

### IMPORTANT

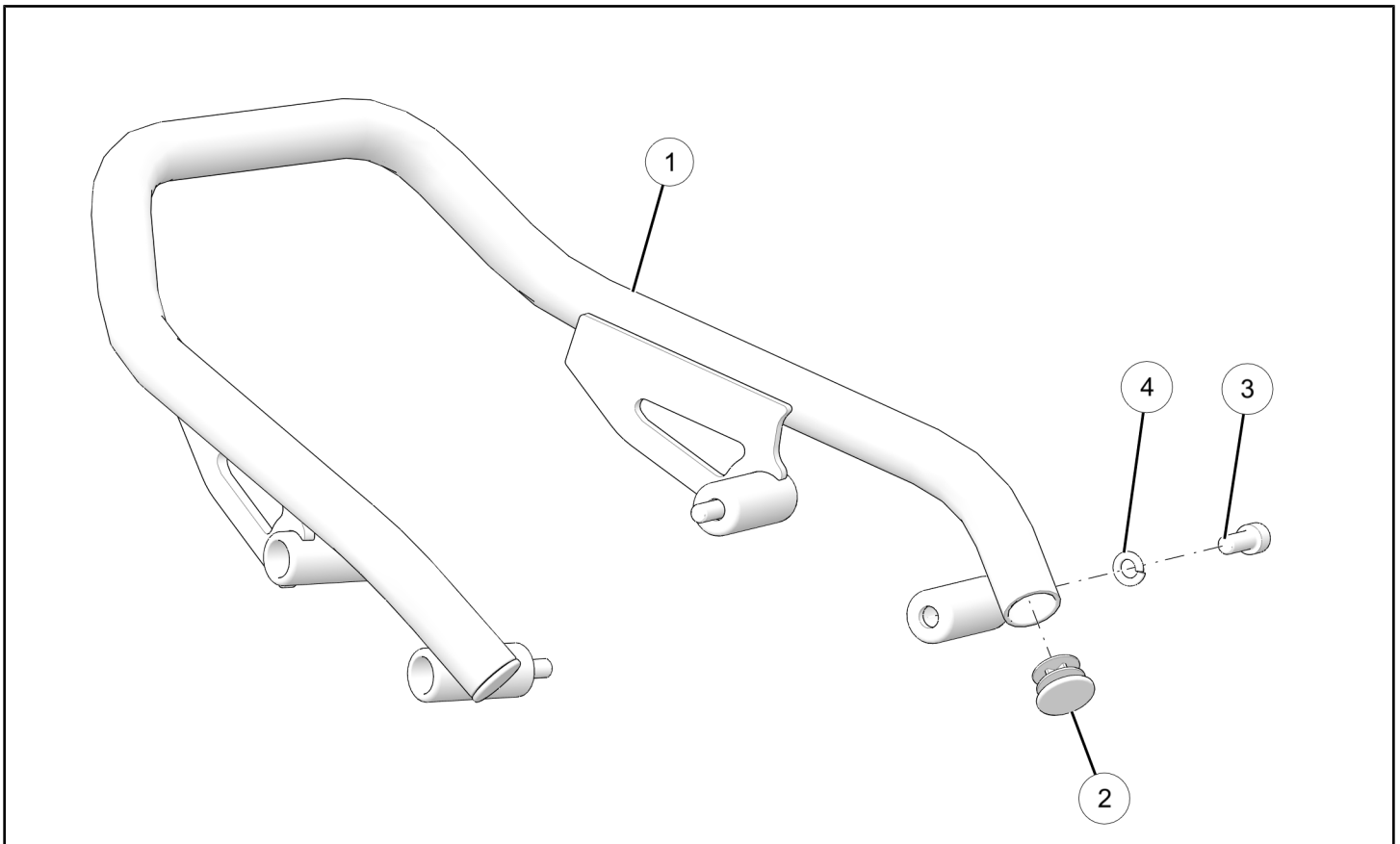
Indian Motorcycle® FTR™ 1200 *Grab Handle Kit* P/N 2883512 is not compatible with the following:

- *Luggage Rack Kit* P/N 2883511
- *Seat Cowl Kit* P/N 2883504-XXX
- *Carbon Fiber Seat Cowl Kit* P/N 2883900
- *High License Plate Mount Kit* P/N 2884060

## BEFORE YOU BEGIN

Read these instructions and check to be sure all parts and tools are accounted for. Please retain these installation instructions for future reference and parts ordering information.

## KIT CONTENTS



REF	QTY	PART DESCRIPTION	P/N AVAILABLE SEPARATELY
1	1	Weld-Grab Handle	N/A
2	2	Snap-In, Round Plug	5455998
3	4	Screw-Socket Head, M8 x 1.25, 20	7520320
4	4	Washer, 8.5 x 14.8 x 1.9	7556528
	1	Instructions	9929470

## TOOLS REQUIRED

- Safety Glasses
- Hex Key Set, Metric
- Hex Key Set, Torx®
- Screwdriver Set, Torx®
- Socket Set, Metric
- Socket Set, Torx® Bit
- Torque Wrench

## IMPORTANT

Your accessory kit is exclusively designed for your vehicle. Please read the installation instructions thoroughly before beginning. Installation is easier if the vehicle is clean and free of debris. For your safety, and to ensure a satisfactory installation, perform all installation steps correctly in the sequence shown.

## INSTALLATION INSTRUCTIONS

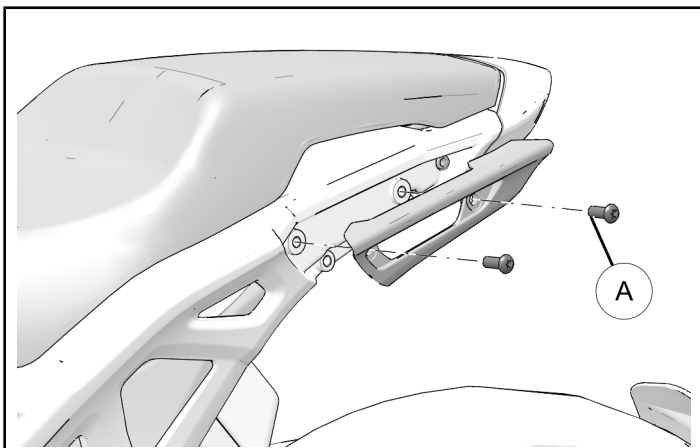
### VEHICLE PREPARATION

#### GENERAL

1. Turn key or ignition switch to OFF position and remove key.
2. Ensure motorcycle is parked on a flat surface, kickstand is fully extended, and vehicle is stable prior to installation.

#### PASSENGER HANDLE REMOVAL

1. Remove two screws (A) to remove passenger handle from motorcycle frame.



2. Repeat this section for opposite side.

## FEEDBACK FORM

A feedback form has been created for the installer to provide any comments, questions or concerns about the installation instructions. The form is viewable on mobile devices by scanning the QR code or by clicking [HERE](#) if viewing on a PC.



### ACCESSORY INSTALLATION

1. Install grab handle with four screws (3) and four washers (4). Loosely install before torquing hardware.

#### TORQUE

Four screws (3): 19 ft. lbs. (26 Nm)

