

# PASSENGER BACKREST LUGGAGE RACK KIT



P/N 2880955-XXX

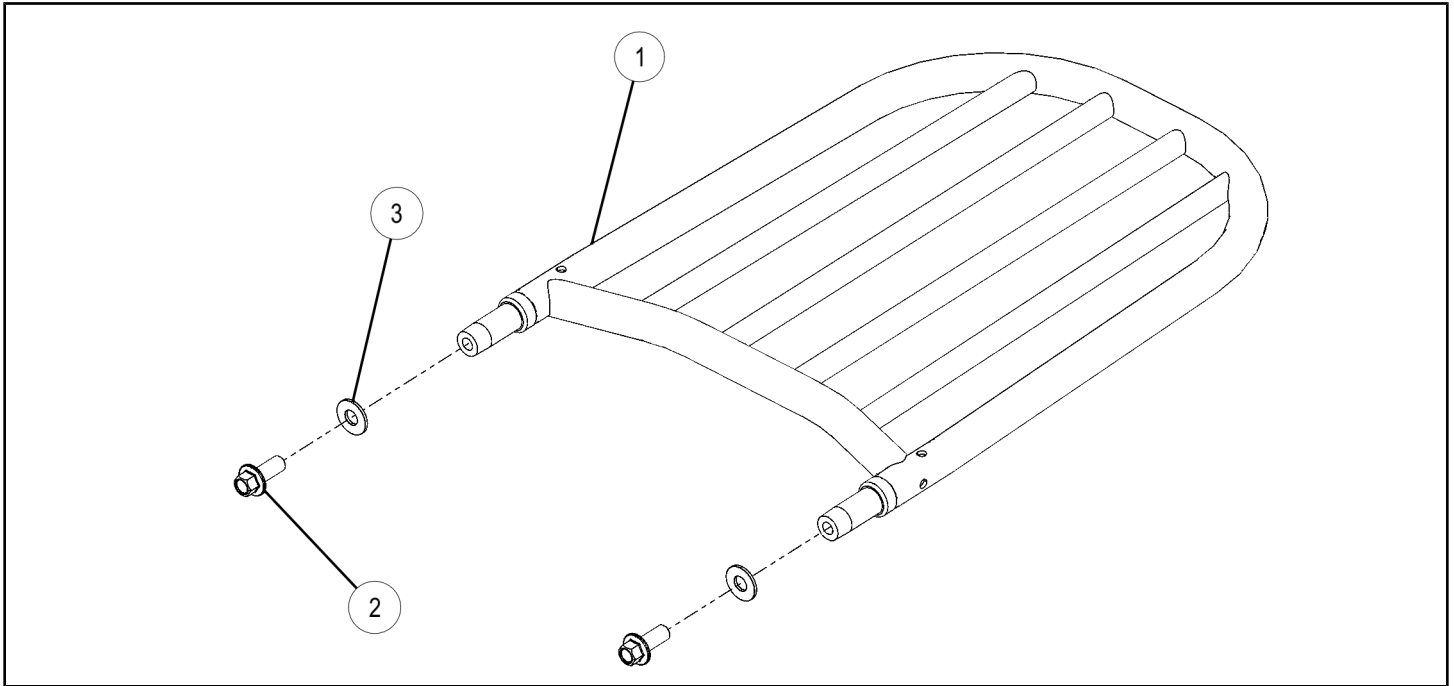
## APPLICATION

Verify accessory fitment at [www.indianmotorcycle.com](http://www.indianmotorcycle.com).

## BEFORE YOU BEGIN

Read these instructions and check to be sure all parts and tools are accounted for. Please retain these installation instructions for future reference and parts ordering information.

## KIT CONTENTS



REF	QTY	PART DESCRIPTION	P/N AVAILABLE SEPARATELY
1	1	Weld- Passenger Backrest Rack	N/A
2	2	Screw, Hexflange - M8 X 1.25 X 20	7517458
3	2	Washer - .325 X .750 X .063	7555874

## TOOLS REQUIRED

- Safety Glasses
- Screwdriver, Slotted
- Socket Set, Metric
- Torque Wrench

## IMPORTANT

Your Indian Motorcycle® Passenger Backrest Luggage Rack Kit is exclusively designed for your vehicle. Please read the installation instructions thoroughly before beginning. Installation is easier if the vehicle is clean and free of debris. For your safety, and to ensure a satisfactory installation, perform all installation steps correctly in the sequence shown.

# INSTALLATION INSTRUCTIONS

## VEHICLE PREPARATION

### GENERAL

1. Turn key or ignition switch to **OFF** position and remove key. If equipped with keyless fob, remove fob from proximity of vehicle.
2. Ensure motorcycle is parked on a flat surface, kickstand is fully extended, and vehicle is stable prior to installation.

#### CAUTION

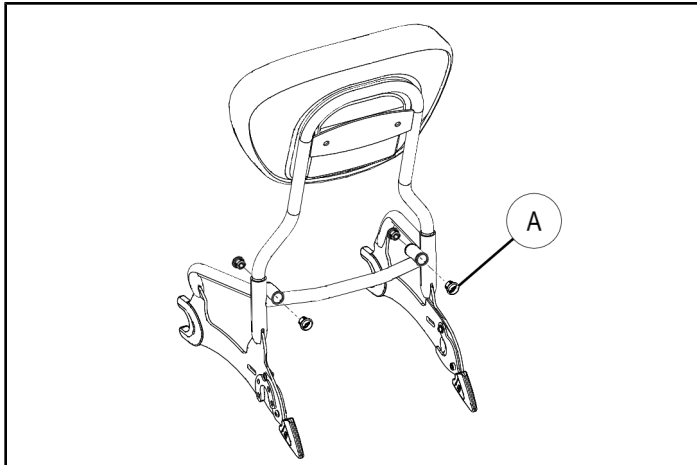
Protect surfaces with protective cloth during installation.

## ACCESSORY INSTALLATION

1. Carefully remove and discard four luggage rack plugs **A**.

#### IMPORTANT

Be careful not to damage chrome or paint.



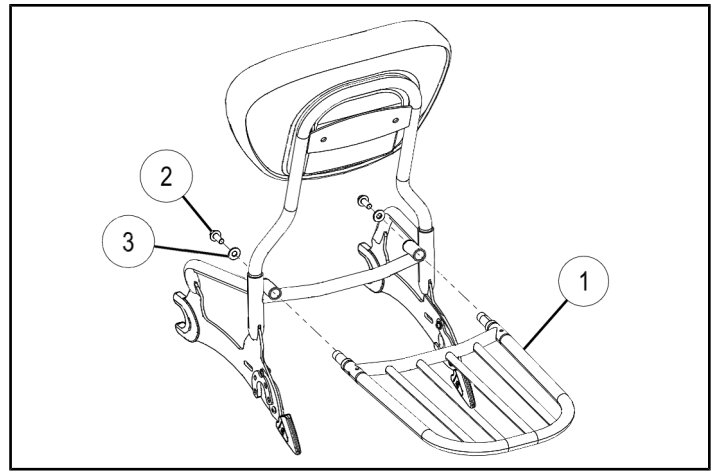
2. Place luggage rack **1** into sockets on passenger back rest.
3. Install washer **3** and screws **2**. Torque to specification.

#### TORQUE

Hexflange Screws **2**:  
**26 ft-lbs (35 N·m)**

#### ⚠ WARNING

Do not use rack without screws installed.



## FEEDBACK FORM

A feedback form has been created for the installer to provide any comments, questions or concerns about the installation instructions. The form is viewable on mobile devices by scanning the QR code or by clicking [HERE](#) if viewing on a PC.

