

# HIGHWAY BAR RUBBER FOOT REST KIT

P/N 2880866

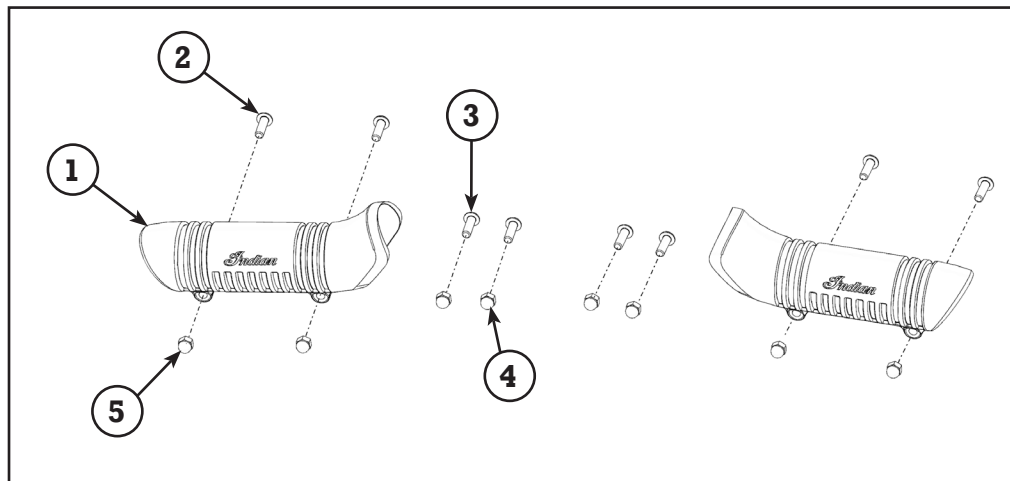


## APPLICATION

INDIAN MOTORCYCLES WITH MUSTACHE HIGHWAY BAR

## BEFORE YOU BEGIN

Read these instructions and check to be sure all parts and tools are accounted for. Please retain these installation instructions for future reference and parts ordering information. For your safety, and to ensure a satisfactory installation, perform all installation steps correctly in the sequence shown below.



## KIT CONTENTS

Ref	Qty	Part Description	Part Number
1	2	Foot Rest, Highway Bar	5415430
2	4	Screw-Hex, Button Head, M5x0.8x16 10.9 ZPC	7517680
3	4	Screw-Hex, Button Head, M5x0.8x16 10.9 BLK	7520295
4	4	Nut-Acorn, M5, SS	7547264
5	4	Nut-Acorn, M5, Black	7547783
	1	Instructions	9925844

## TOOLS NEEDED

3 mm External Hex Drive  
Torque Wrench (in-lbs. and ft. lbs.)

Ratchet  
8 mm Wrench

## APPROXIMATE ASSEMBLY TIME

10 mins

## IMPORTANT

Your Indian HIGHWAY BAR RUBBER FOOT REST KIT is exclusively designed for your vehicle. Please read the installation instructions thoroughly before beginning. Installation is easier if the vehicle is clean and free of debris. For your safety, and to ensure a satisfactory installation, perform all installation Steps correctly in the sequence shown.

## INSTALLATION INSTRUCTIONS

### Removal (If Necessary)

1. Remove lower fairings, if necessary.

**NOTE:** The Highway Bar Rubber Footrest kit is not compatible with the Highway Bar Wrap Kit (P/N 2880942 or 2880943) or the Highway Bar Closeout Kit (P/N 2880941)

### Installation

1. Clean the highway bar where the highway bar rubber footrest (1) will mount as shown in figure. Use alcohol or similar. Dry thoroughly.
2. Spread the highway bar rubber footrest over the highway bar. There is no difference between the LH and RH parts. Adjust the rubber footrest until the geometry matches that of the highway bar. See figure.
3. The kit contains both black and bright fasteners. Use personal preference to choose which fasteners to use.
4. Use an 8 mm wrench and 3 mm external hex drive to install the screws (2) or (3) and acorn nuts (5) or (4) through the holes at the bottom of the rubber footrest. The acorn nut should be on the forward side of the highway bar. Torque to 25 in-lbs. (2.8 Nm).
5. Repeat on the other side with the second rubber footrest.

