

LOWER CLOSEOUT KIT



P/N 2884787

BEFORE YOU BEGIN

Read these instructions and check to be sure all parts and tools are accounted for. Please retain these installation instructions for future reference and parts ordering information.

APPLICATION

Verify accessory fitment at www.indianmotorcycle.com.

IMPORTANT

This cannot be used with the Extended Reach Foot Controls Kit PN: 2880238.

REQUIRED SOLD SEPARATELY

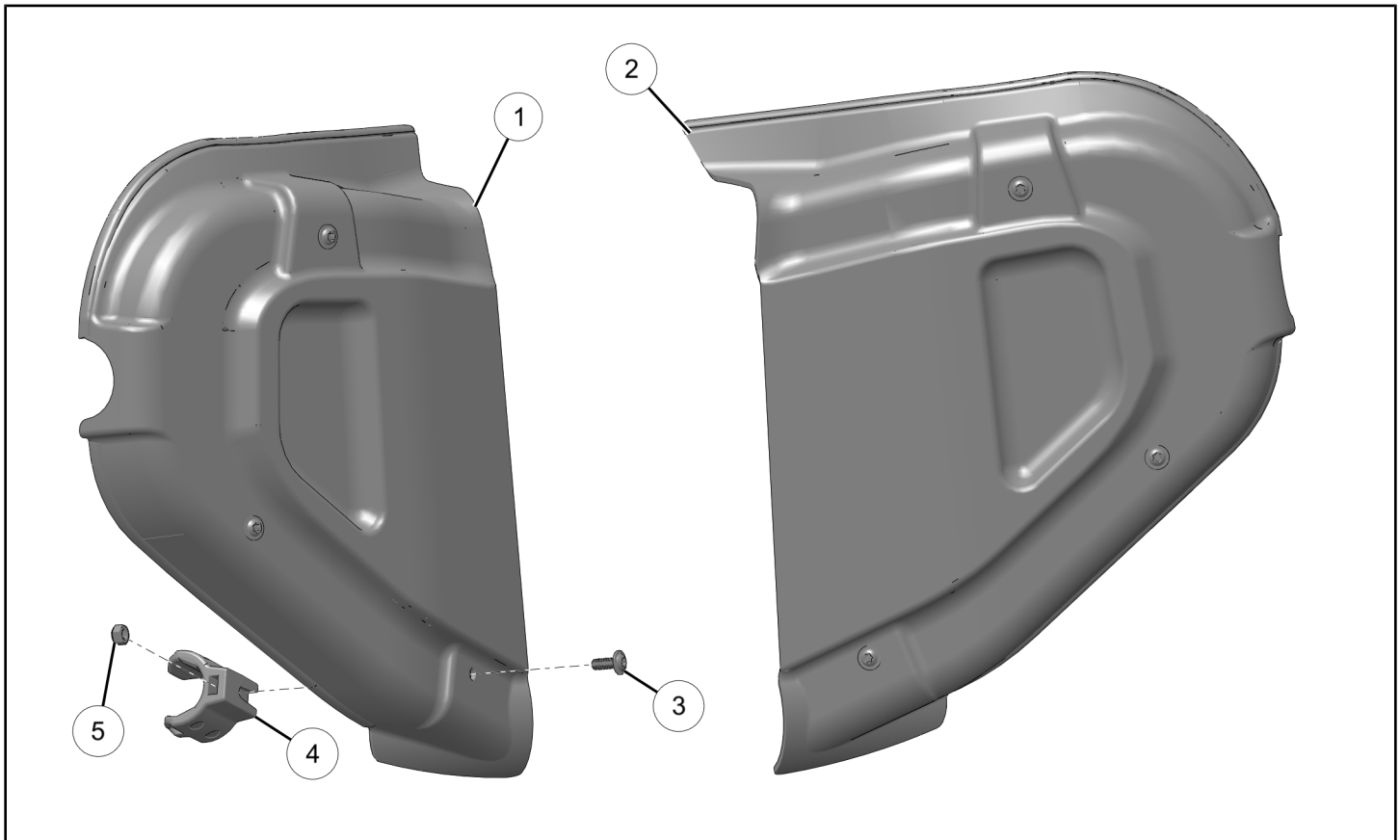
Only parts for installation of the Indian Motorcycle® Lower Closeout Kit are included. Prior installation of the following additional kits are also required (sold separately):

- Highway Bar, P/N 2881756-XXX

NOTICE

XXX = Indian Motorcycle® color code (For example: 266 = Black)

KIT CONTENTS



REF	QTY	PART DESCRIPTION	P/N AVAILABLE SEPARATELY	AVAILABLE SERVICE KIT
1	1	Closeout, Lower, RH	n/a	n/a
2	1	Closeout, Lower, LH	n/a	n/a
3	6	Screw, Flanged Button Head, Torx®, M6 X 1 X 16 mm	n/a	2208888
4	6	Clamp, Snap, 1.25 in. bar	n/a	2208888
5	6	Nut, Hex, Nylon Locking, M6 X 1.0	n/a	2208888
6	8	Protective film, Clear (Not Shown)	n/a	n/a

TOOLS REQUIRED

None

CONSUMABLES REQUIRED

- Isopropyl Alcohol (IPA)
- Gloves, Chemical Resistant
- Tape, Masking (or equivalent)

IMPORTANT

Your Indian Motorcycle® Lower Closeout Kit is exclusively designed for your vehicle. Please read the installation instructions thoroughly before beginning. Installation is easier if the vehicle is clean and free of debris. For your safety, and to ensure a satisfactory installation, perform all installation steps correctly in the sequence shown.

INSTALLATION INSTRUCTIONS

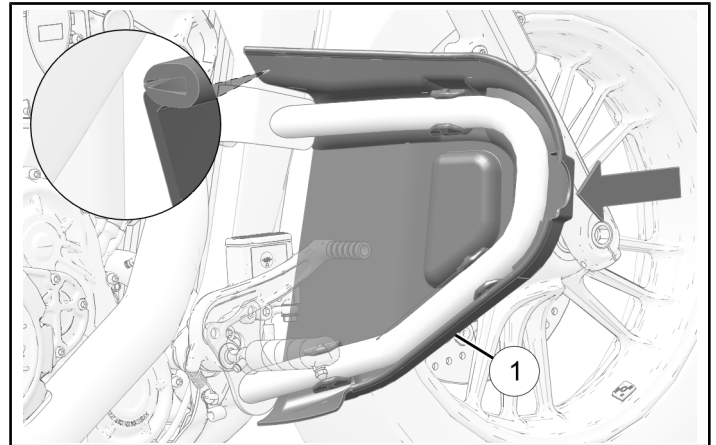
VEHICLE PREPARATION

GENERAL

1. Park vehicle on stable flat surface and fully extend kickstand. Make sure vehicle is stable prior to installation.
2. Turn key to **OFF** position and remove key from vehicle.

ACCESSORY INSTALLATION

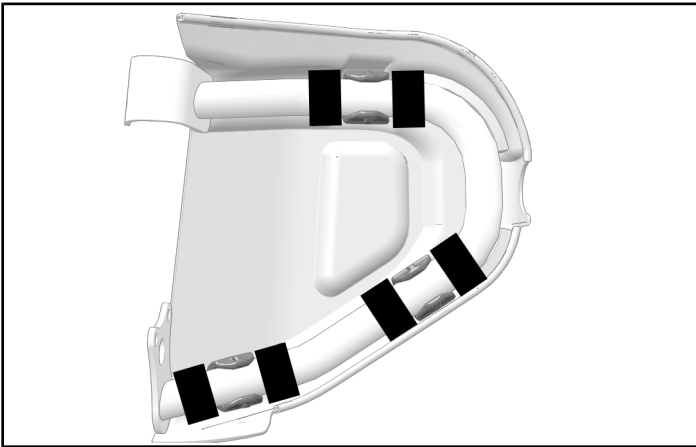
1. Install RH lower closeout ① to front by pressing clamps onto highway bar until a click is heard and closeout is securely attached. Make sure there is a small gap between the closeout and the frame.



2. Mark locations of clamps with masking tape as shown.

TIP

Protective film is approximately 3mm wider than clamps on each side.

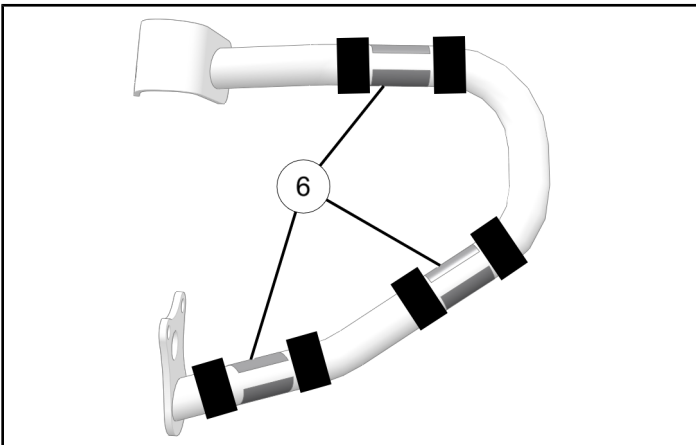


3. Remove closeout and clean highway bar between pieces of masking tape with Isopropyl alcohol.

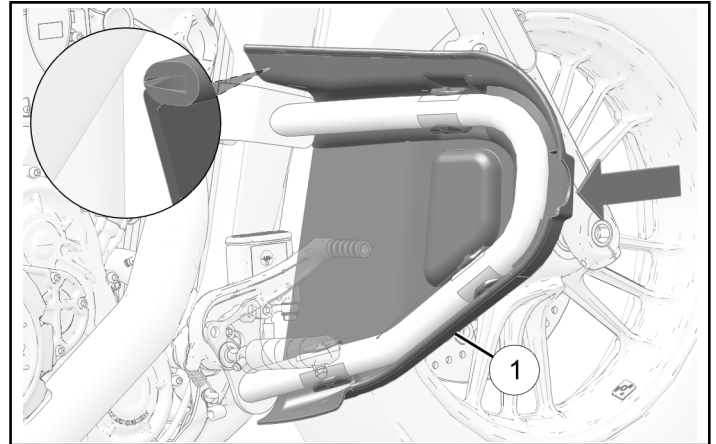
⚠ WARNING

Follow all chemical manufacturer instructions and safety precautions. Failure to follow all manufacturer instructions and precautions may result in severe injury or death.

4. Install protective film pieces ⑥ between masking tape and remove masking tape.



5. Install RH lower closeout ① to front by pressing clamps onto highway bar over protective film until a click is heard and closeout is securely attached.



6. Repeat procedure for LH lower closeout ②.

INSTRUCTION FEEDBACK FORM

A feedback form has been created for the installer to provide any comments, questions or concerns about the installation instructions. The form is viewable on mobile devices by scanning the QR code or by clicking [HERE](#) if viewing on a PC.

