

# DRIVING LIGHT KIT

P/N 2880732-156 (Chrome); 2880732-266 (Gloss Black); 2880732-463 (Matte Black)

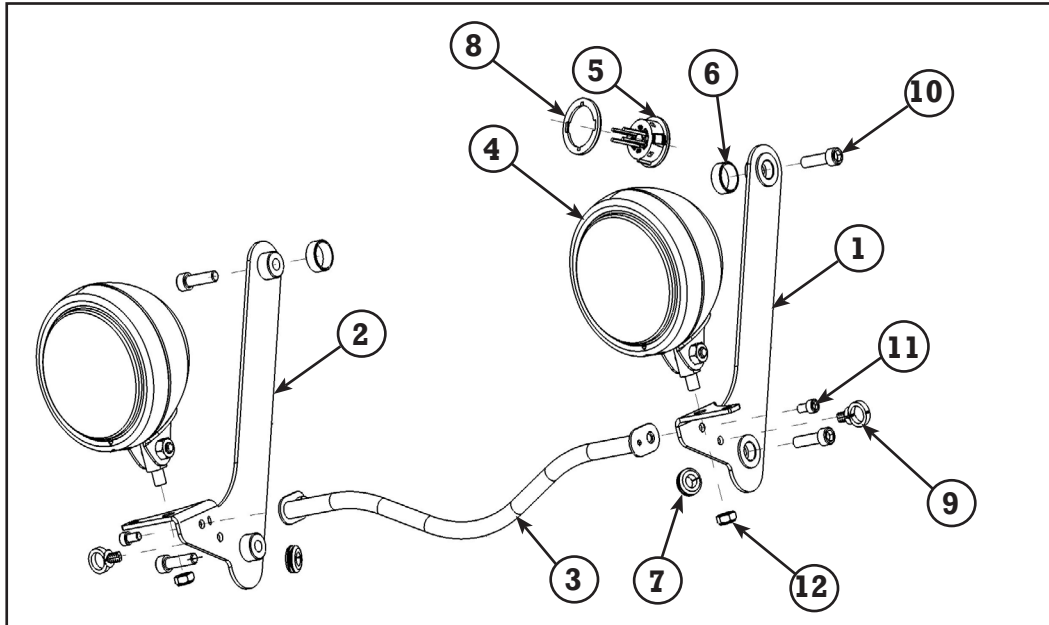


## APPLICATION

2014-2016 INDIAN CRUISER MOTORCYCLES WITH THE THUNDERSTROKE 111, WITHOUT A FAIRING

## BEFORE YOU BEGIN

Read these instructions and check to be sure all parts and tools are accounted for. Please retain these installation instructions for future reference and parts ordering information.



## KIT CONTENTS

Ref	Qty	Part Description	Part Number
1	1	LH Light Bar Bracket	1020284-156 (Chrome) 1020284-463 (Matte Black)
2	1	RH Light Bar Bracket	1020285-156 (Chrome) 1020285-463 (Matte Black)
3	1	Support Bar	1020416-156 (Chrome) 1020416-463 (Matte Black)
4	2	Driving Light	2412458-156 (Chrome) 2412458-266 (Gloss Black) 2412458-463 (Matte Black)
5	1	Driving Light Switch	4015124
6	2	Windshield Bushing	5138827
7	2	Harness Grommet	5414884
8	1	Spacer-Bezel, Nacelle	5451104
9	2	Push In Clip	7081968
10	4	Screw - M8x1.25x30	7517361
11	2	Screw - M6x1.0x12	7517405
12	2	Thin Hex Nut - 3/8-16 Nylock	7547738
	1	Instructions	9925622

## TOOLS NEEDED

14 mm Socket

14 mm Open End Wrench

6 mm Hex head

5 mm Hex head

## APPROXIMATE ASSEMBLY TIME

60 min

## IMPORTANT

Your Indian DRIVING LIGHT KIT is exclusively designed for your vehicle. Please read the installation instructions thoroughly before beginning. Installation is easier if the vehicle is clean and free of debris. For your safety, and to ensure a satisfactory installation, perform all installation steps correctly in the sequence shown.

## INSTALLATION INSTRUCTIONS

### Left Side Instructions

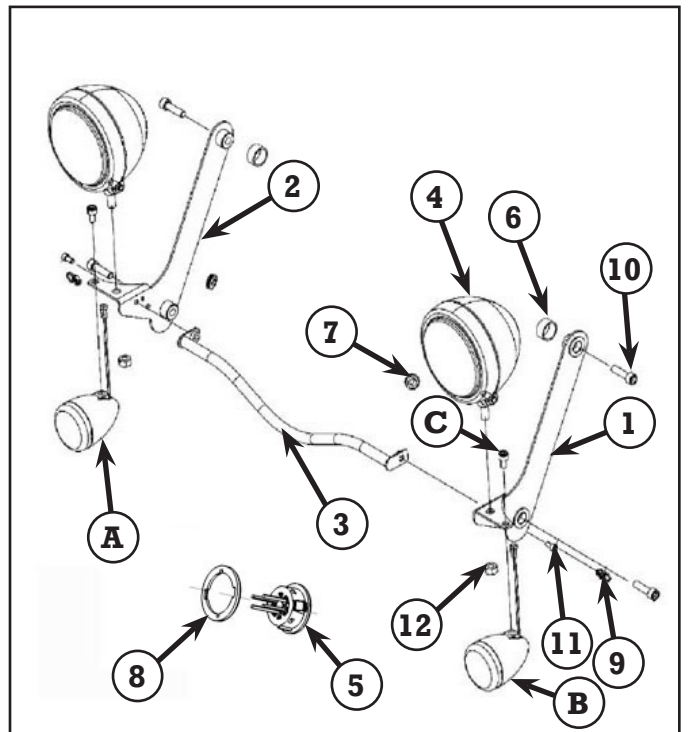
#### Removal

1. Turn the bike to the right steering stop.
2. Unbolt the LH turn signal from the turn signal bracket. Support and protect the turn signal while leaving the wiring in place. Save the bolt used to attach the LH turn signal it will be used during the installation process of the turn signal.
3. Remove the LH turn signal bracket by unscrewing bolt into nacelle.
4. Remove the LH top bolt from the nacelle covers.



#### Installation

1. Place windshield bushing (6) around boss on the top of the LH light bar bracket (1) and then install using two of the M8 screws (10) supplied in the kit. Torque the screws to 18 ft. lbs. (24.4 Nm).
2. Install LH turn signal (B) using the screw used during removal. Torque screw to 18 ft. lbs. (24.4 Nm).
3. Slide rubber grommet that is around turn signal wire harness out of nacelle. Route driving light harness through the rubber grommet (7) along with the turn signal harness. Slide the driving light wire harness between front and rear nacelle towards the front of the bike, and route wire away from pinch points.
4. Locate the LH auxiliary light connector behind nacelle and plug harness from driving light into this connector. Secure using wire tie.
5. Slide grommet and wire harnesses back into U-shaped slot in the nacelle cover.



6. Install driving light (4) onto LH light bar bracket (1) using one thin hex nut (12). Align the seam of the driving light (4) parallel with the support bar (3) in order to get the proper orientation of the light. Torque the nut to 18 ft. lbs. (24.4 Nm).
7. Route both the driving light and the turn signal harness through the push in clip (9) provided in the kit and install into hole just above and to the left of the lower LH light bar bracket (1) mounting screw.
8. Set positioning of driving light and torque the screw to 18 ft. lbs. (24.4 Nm).
9. The bike is either equipped with a driving light plug or a driving light switch. Supplied in this kit is a gloss black driving light switch (5). Remove plug or driving light switch from the nacelle. If the bike is equipped with a switch disconnect it from the vehicle harness.
10. Install driving light switch (5) supplied in this kit and be sure to note the locating tab on the back of the switch. Locate the vehicle harness connection labeled auxiliary light switch and plug the driving light switch into this connector. Carefully route this connector so that it is not in any pinch points when the bike is steered from the left to right stops.
11. Install support bar (3) to LH light bar bracket (1) using one M6 screw (11), finger tighten only at this time.

## **Right Side Instructions**

### **Removal**

1. Turn the bike to the left steering stop.
2. Unbolt the RH turn signal from the turn signal bracket. Support and protect the turn signal while leaving the wiring in place. Save the bolt used to attach the RH turn signal it will be used during the installation process of the turn signal.
3. Remove the RH turn signal bracket by unscrewing bolt into nacelle.
4. Remove the RH top screw from the nacelle covers.

### **Installation**

1. Place windshield bushing (6) around boss on the top of the RH light bar bracket (2) and then install using two of the M8 screws (10) supplied in the kit. Torque the screws to 18 ft. lbs. (24.4 Nm).
2. Install RH turn signal (A) using the screw used during removal. Torque screw to 18 ft. lbs. (24.4 Nm).
3. Slide rubber grommet that is around turn signal wire harness out of nacelle. Route driving light harness through the rubber grommet (7) along with the turn signal harness. Slide the driving light wire harness between front and rear nacelle towards the front of the bike, and route wire away from pinch points.
4. Locate the RH auxiliary light connector behind nacelle and plug harness from driving light into this connector. Secure using wire tie.
5. Slide grommet (7) and wire harnesses back into U-shaped slot in the nacelle cover.
6. Install driving light (4) onto RH light bar bracket (2) using one thin hex nut (12). Torque the nut to 18 ft. lbs. (24.4 Nm).
7. Route both the driving light and the turn signal harness through the push in clip (9) provided in the kit and install into hole just above and to the left of the lower RH light bar bracket mounting screw.
8. Set positioning of driving light and torque the screw to 18 ft. lbs. (24.4 Nm).
9. Test the functionality of the driving light switch, driving lights, and turn signals.
10. Position support bar (3) so that the tab inserts on the RH driving light (2) bracket and finger tighten one M6 screw (11) into the support bar (3). At this time torque both the screws to 84 in-lbs (9.5 Nm).

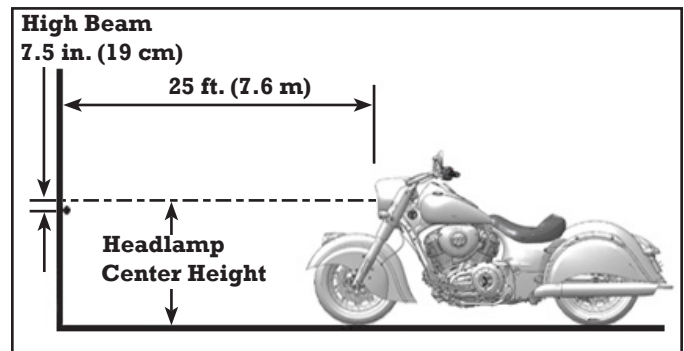
## LIGHT ADJUSTMENT

**NOTE:** This procedure will be made easier with 2 people.

### Headlight Aim Inspection

On high beam, the center of highest intensity (appearing as a diamond shape) should be 7.5 in (19 cm) lower than the headlamp bulb and centered straight ahead at 25 ft (7.6 m).

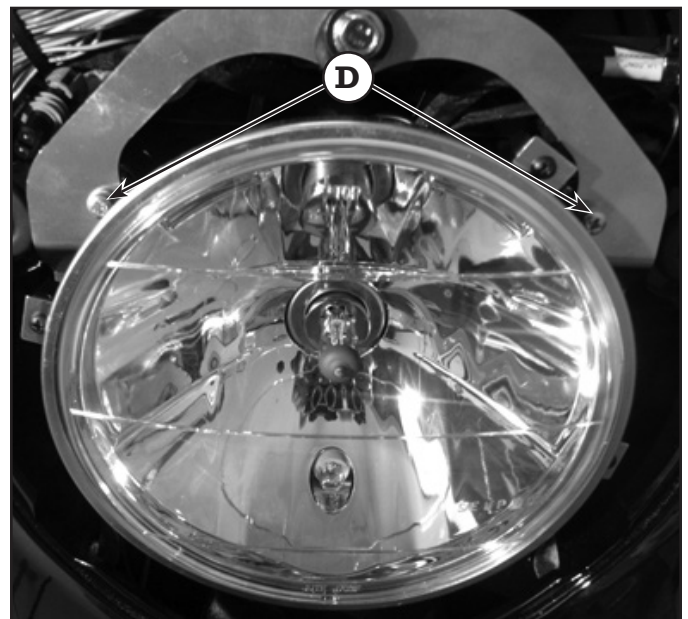
1. Verify that tire pressure is at specification. See your Owner's manual.
2. Verify that rear suspension ride height (preload) is at specification. See your Owner's manual.
3. Position the motorcycle on a level surface with the headlight 25 ft (7.6 m) from a wall.
4. With the operator and passenger (if applicable) on board, bring the motorcycle to the fully upright position.
5. Start the engine and switch the headlamp to high beam. Observe the headlight aim on the wall.
6. Make any necessary adjustments to headlight aim. See your Owner's manual.



### Headlight Aim Adjustment

The headlamp adjustment screws are located inside the headlamp housing.

1. To adjust the headlamp vertically, tighten both top adjustment screws (D) equally to adjust the beam downward using M4 hex wrench or universal tool. Loosen both screws equally to adjust the beam upward.
2. To adjust the headlamp horizontally, loosen the left side screw to adjust the beam to the left. Loosen the right side screw to adjust the beam to the right.



### Perform Headlight Adjustment

1. With the bike still set up 25 ft from the wall turn on the low beam. Use a piece of cardboard or towel to cover the left driving light.
2. Turn on the driving lights and use a second piece of cardboard or towel to cover the headlight. Align the the top of the beam from the driving lights with the top of the beam from the headlight.
3. Make adjustments to the driving lights as necessary to ensure that the beam is not higher than the low beam from the headlights..
4. Repeat Steps 1-3 with the right driving light covered.