

# BAR END MIRROR KIT



P/N 2883638, 2883730-XXX

## APPLICATION

Verify accessory fitment at [www.indianmotorcycle.com](http://www.indianmotorcycle.com).

## BEFORE YOU BEGIN

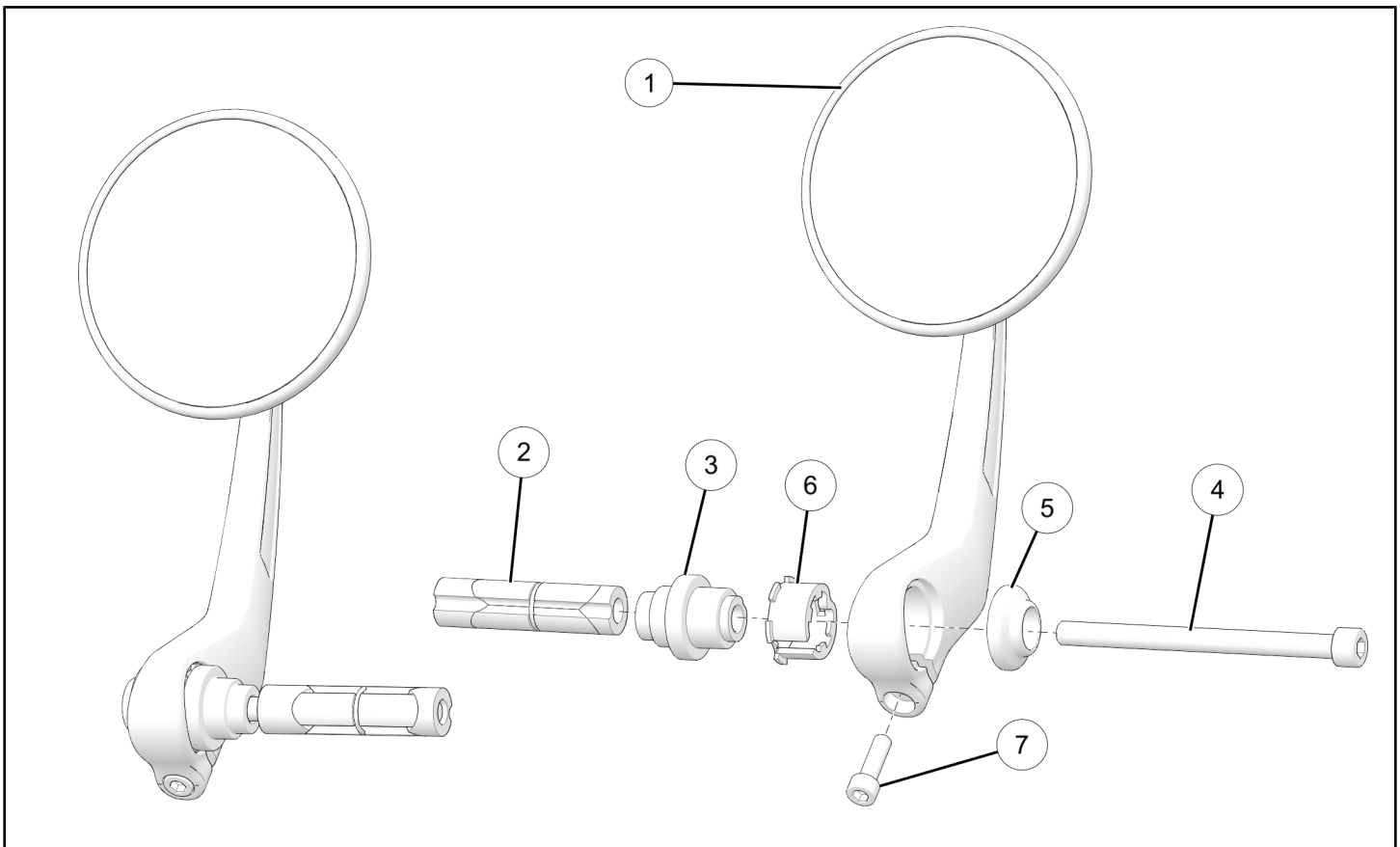
Read these instructions and check to be sure all parts and tools are accounted for. Please retain these installation instructions for future reference and parts ordering information.

## REQUIRED SOLD SEPARATELY

Only parts for installation of the Indian Motorcycle® Bar End Mirror Kit are included. For complete installation, the following additional kit is required (sold separately):

- *Open End Grip Kit*, P/N 2882520

## KIT CONTENTS



REF	QTY	PART DESCRIPTION	PART NUMBER	KIT 2883638	KIT 2883730-XXX
1	2	Assembly, Mirror, Bar End	2637330-XXX		✓
2	2	Assembly, Split Nut	-	✓	✓
3	2	Mounting Spool, Split Nut	-	✓	✓
4	2	Screw, Socket Head, M8 X 1.25 X 100	-	✓	✓

REF	QTY	PART DESCRIPTION	PART NUMBER	KIT 2883638	KIT 2883730-XXX
5	2	Cover, Mirror End	7557165		✓
6	2	Friction Ring, Split Nut	5455729	✓	✓
7	2	Screw, Socket Head, M5	7521092	✓	✓

## TOOLS REQUIRED

- Safety Glasses
- Socket Set, Hex Bit, Metric
- Torque Wrench

## IMPORTANT

Your Indian Motorcycle® Bar End Mirror Kit is exclusively designed for your vehicle. Please read the installation instructions thoroughly before beginning. Installation is easier if the vehicle is clean and free of debris. For your safety, and to ensure a satisfactory installation, perform all installation steps correctly in the sequence shown.

## INSTALLATION INSTRUCTIONS

1. Turn key or ignition switch to “OFF” position and remove key.
2. Ensure motorcycle is parked on a flat surface, kickstand is fully extended, and vehicle is stable prior to installation.

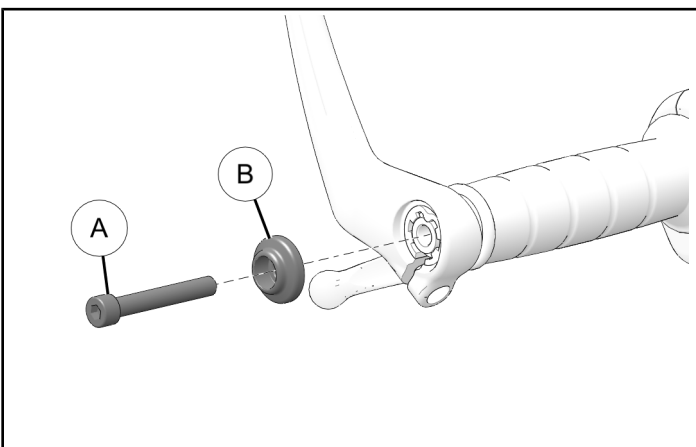
### INSTALL GRIP KIT

1. Follow instructions for Indian® Scout® Grip Kit (PN 2882520).

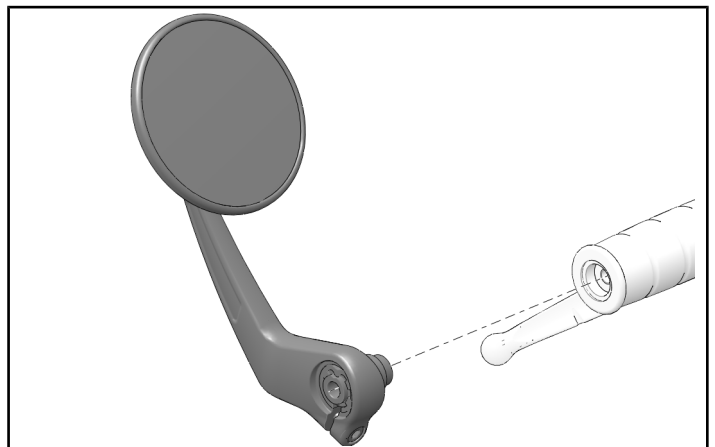
### SCOUT® BOBBER MIRROR REMOVAL

(Applicable if transferring mirrors from stock Scout® Bobber handlebar)

1. Remove and discard screw (A), remove and retain end cap (B) from handlebar end.

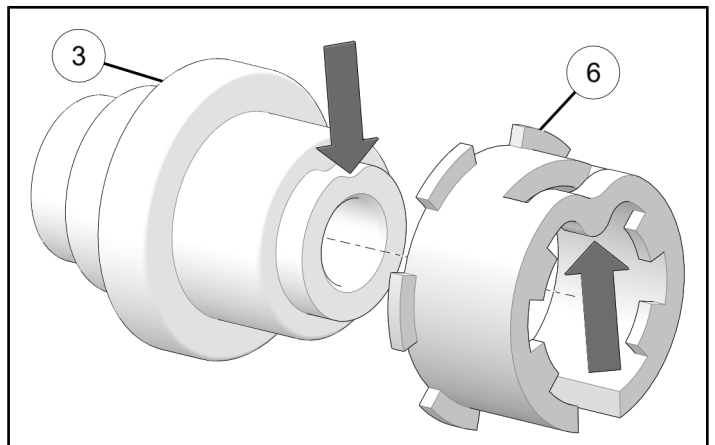


2. Remove and retain mirror assembly.

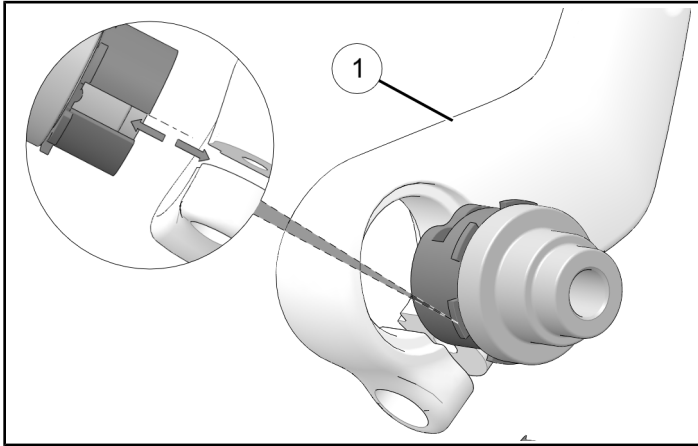


### ASSEMBLE MIRROR (KIT PN 2883730-XXX)

1. Assemble friction ring (6) to mounting spool (3). Ensure that tab on ring aligns with groove in spool as shown with arrows.



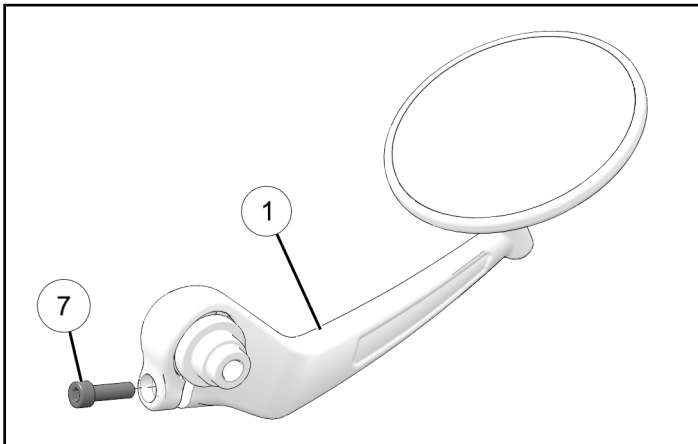
2. Assemble friction ring and mounting spool into mirror assembly ①. Align slot in mirror assembly with slot in friction ring.



3. Install screw ⑦ into mirror assembly ① and torque to specification.

#### TORQUE

Screw ⑦:  
**32 in-lbs (4 N·m)**

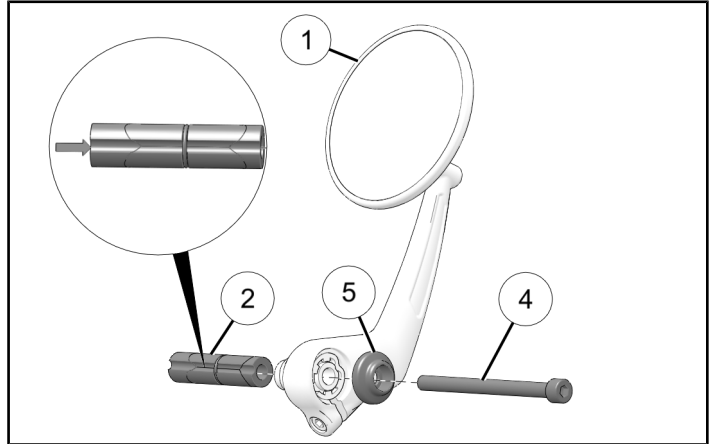


## ASSEMBLE SPLIT NUT TO MIRROR

1. Loosely assemble mirror ① split nut ②, mirror end covers ⑤ and new screw ④ as shown.

#### NOTE

Ensure grooves in split nut sections are aligned as shown with arrow.



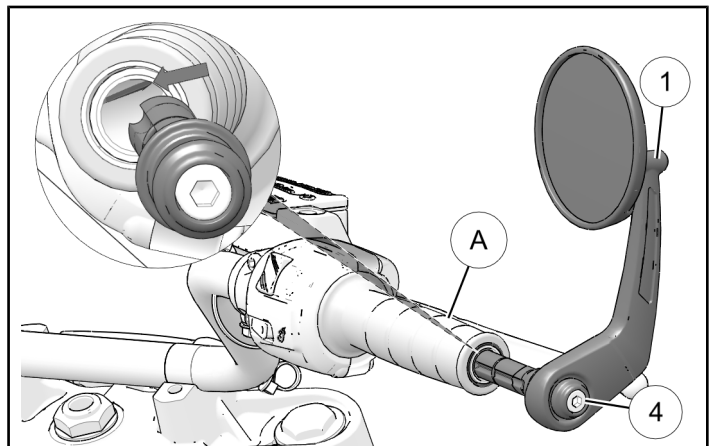
2. Assemble opposite side mirror, ensuring that friction ring, mounting spool, split nut, and end cap are assembled in opposite direction.

## INSTALL MIRROR ASSEMBLY

1. Insert mirror assembly ① into open end of handlebar ① until mount bottoms out against end of handlebar.

#### NOTE

There is a raised seam inside some handlebar ends (Shown with arrow). This seam will need to be aligned with groove of split nut.



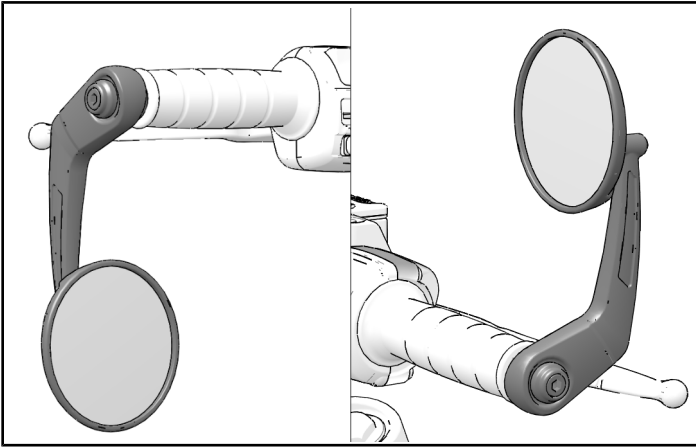
2. Adjust mirror to desired position and torque screw ④ to specification.

#### TORQUE

Split Nut Screw ④:  
22 ft-lbs (30 N·m)

#### NOTE

Mirror can be mounted in either **up** or **down** position.



3. Repeat **this section** for opposite side.
4. If mirror is installed in **down** position, cycle steering lock to lock to verify mirror does not make contact with fuel tank. Readjust and re-torque screw ② as needed.

## FEEDBACK FORM

A feedback form has been created for the installer to provide any comments, questions or concerns about the installation instructions. The form is viewable on mobile devices by scanning the QR code or by clicking [HERE](#) if viewing on a PC.

