

# STAGE 1 EXHAUST TIP KIT



**P/N 2880671-XXX, 2880799-XXX**

## APPLICATION

Verify accessory fitment at [www.indianmotorcycle.com](http://www.indianmotorcycle.com).

## BEFORE YOU BEGIN

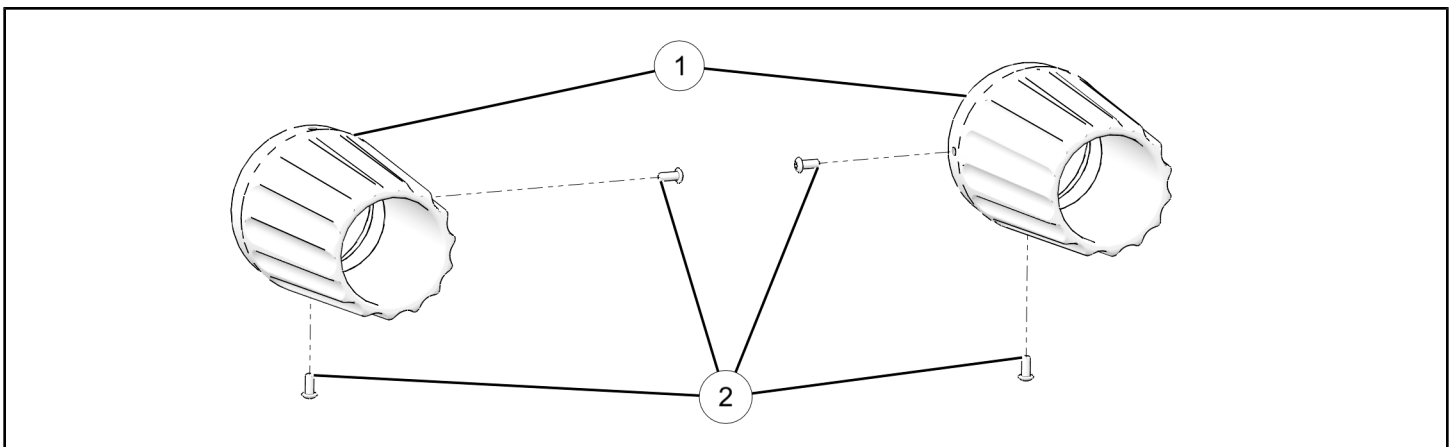
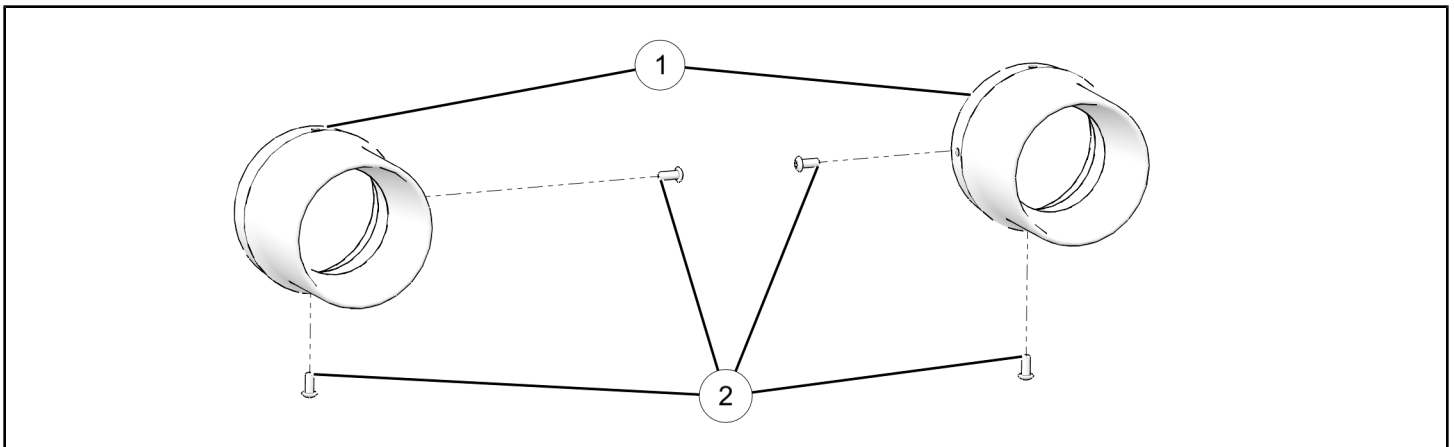
Read these instructions and check to be sure all parts and tools are accounted for. Please retain these installation instructions for future reference and parts ordering information.

## KIT CONTENTS

This kit contains parts for installation of the Stage 1 Exhaust Tip Kit only. Prior installation of one of the following additional Stage 1 Muffler kits is also required (sold separately):

- Stage 1 Muffler Kit, PN 2879769-XXX
- Stage 1 Muffler Kit, PN 2879768-XXX

This Kit includes:



## NOTE

XXX = Indian® Color Code (For Example 266 = Black)

REF	QTY	PART DESCRIPTION	PART NUMBER
1	2	Tip, Exhaust, Straight Tip, Exhaust, Grooved	1262667-XXX 1262668-XXX
2	4	Screw, Button Head, M5 X 0.8 X 12, Chrome Screw, Torx® Head, M5 X 0.8 X 12, Black	7518817 7520846
	1	Instructions	9924330

## TOOLS REQUIRED

- Socket Set, Torx® Bit
- Torque Wrench

## IMPORTANT

Your Indian Stage 1 Exhaust Tip Kit is exclusively designed for your vehicle. Please read the installation instructions thoroughly before beginning. Installation is easier if the vehicle is clean and free of debris. For your safety, and to ensure a satisfactory installation, perform all installation steps correctly in the sequence shown.

## ASSEMBLY TIME

Approximately 18 minutes

## INSTALLATION INSTRUCTIONS

1. Turn key or ignition switch to “OFF” position and remove key. If equipped with keyless fob, remove fob from proximity of vehicle.
2. Ensure motorcycle is parked on a flat surface, kickstand is fully extended, and vehicle is stable prior to installation.

### ⚠ CAUTION

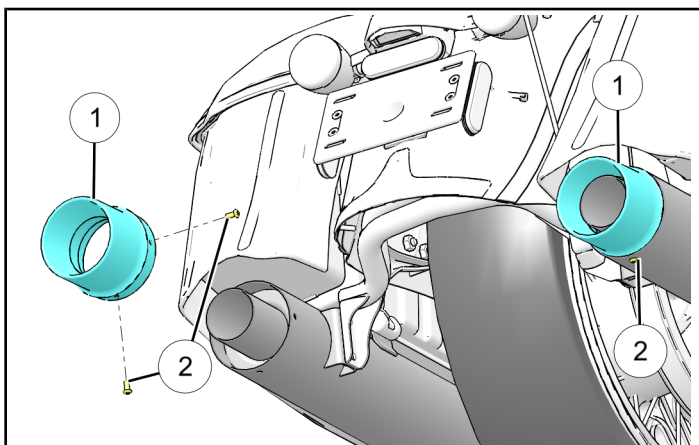
Exhaust system becomes heated during operation and will remain hot following operation. Wait for exhaust system to cool to prevent personal injury.

### STRAIGHT EXHAUST TIP

1. Slide exhaust tip ① into exhaust and secure with two fasteners ② for each exhaust tip ①. Torque four fasteners ② to specification.

#### TORQUE

24 in. lbs. (2.7 Nm)

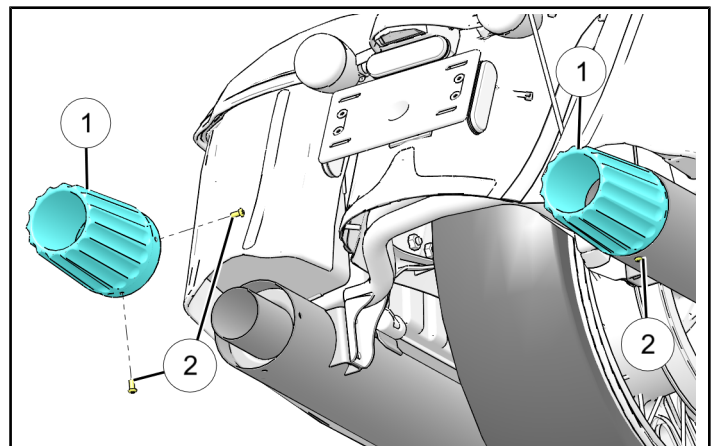


### GROOVED EXHAUST TIP

1. Slide exhaust tip ① into exhaust and secure with two fasteners ② for each exhaust tip ①. Torque four fasteners ② to specification.

#### TORQUE

24 in. lbs. (2.7 Nm)



## FEEDBACK FORM

A feedback form has been created for the installer to provide any comments, questions or concerns about the installation instructions. The form is viewable on mobile devices by scanning the QR code or by clicking [HERE](#) if viewing on a PC.

### FEEDBACK FORM

