

ACCESSORY SPOOL KIT



P/N 2881166

APPLICATION

All MY15–16 Indian Scout Motorcycles

WARNING

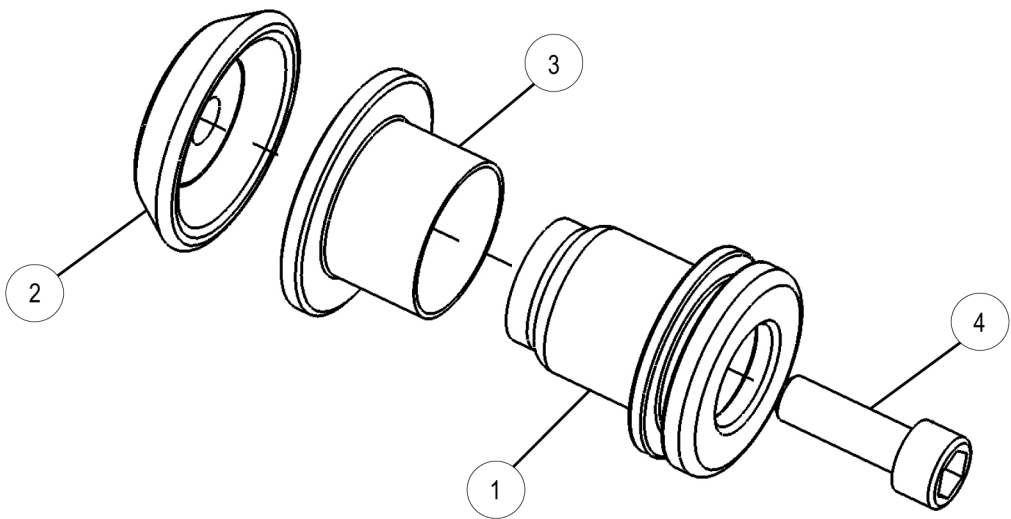
This accessory is only approved for use with the models listed. NEVER use this accessory on non-approved models. Use of this accessory on models other than those listed in these instructions may negatively affect the stability of the vehicle, lead to loss of control, and result in serious injury or death.

BEFORE YOU BEGIN

Read these instructions and check to be sure all parts and tools are accounted for. Please retain these installation instructions for future reference and parts ordering information.

KIT CONTENTS

This Kit includes:



REF	QTY	PART DESCRIPTION	PART NUMBER
1	4	Accessory Spool	5139790
2	4	Backrest Guide	5139802
3	4	Bushing	5452214
4	4	Screw, M8 X 25	7519859
	1	Instructions	9926107

TOOLS REQUIRED

- 6 mm Hex Key Socket
- Ratchet

- Torque Wrench

IMPORTANT

Your Indian ACCESSORY SPOOL KIT is exclusively designed for your vehicle. Please read the installation instructions thoroughly before beginning. Installation is easier if the vehicle is clean and free of debris. For your safety, and to ensure a satisfactory installation, perform all installation steps correctly in the sequence shown.

ASSEMBLY TIME

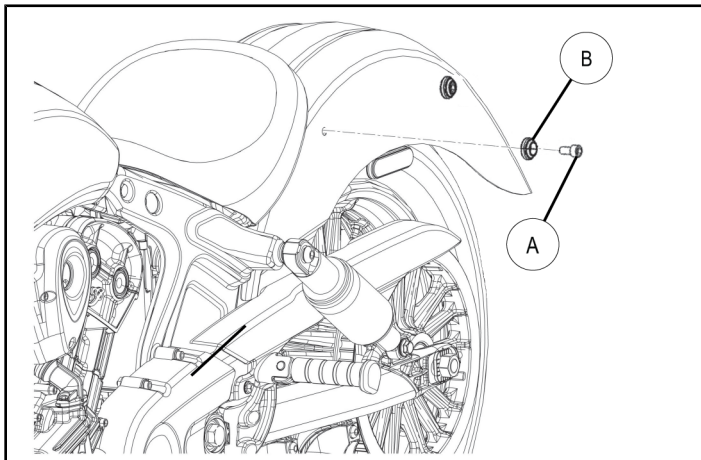
Approximately 12 minutes

INSTALLATION INSTRUCTIONS

IMPORTANT

Install one spool assembly at a time so that fender does not move during installation. Repeat the following process four times for all spools.

1. Remove existing M8 fastener (A) and fender washer (B).



2. Install spool bushing (3) over the spool (1).

NOTE

Ensure the flange on the bushing is in the correct orientation.

3. Place spool (1) into cupped side of backrest guide (2). Install entire assembly with flat side of spool backrest guide (2) on fender and fasten using M8 cap screw (4) as shown. Torque the screw to specification.

TORQUE

18 ± 2 ft. lbs. (24.3 ± 2.7 Nm).

